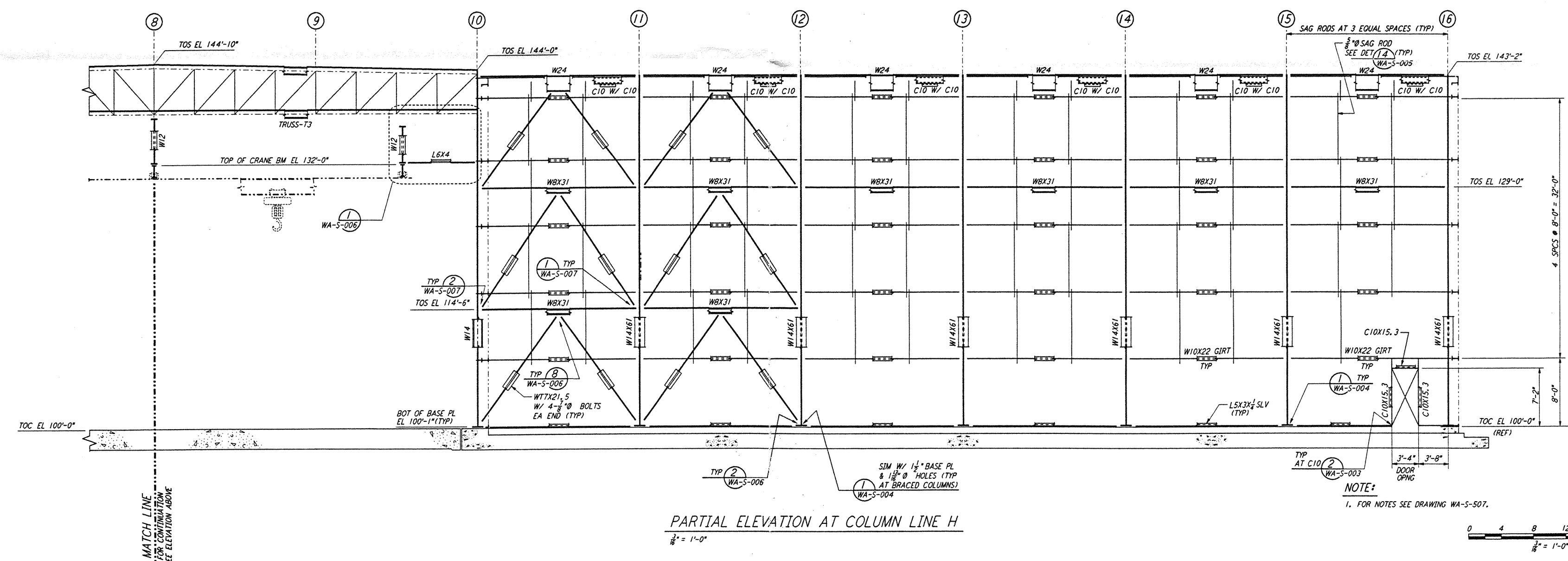
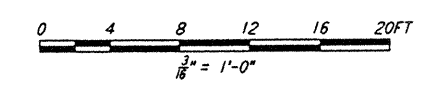


PARTIAL ELEVATION AT COLUMN LINE H
 $\frac{1}{8}'' = 1'-0''$



PARTIAL ELEVATION AT COLUMN LINE H
 $\frac{1}{8}'' = 1'-0''$

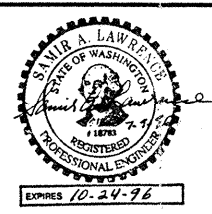


not be reproduced, copied, loaned, exhibited, or used in any other way, except by written consent from PARSONS to the borrower.

This document and the design it covers are the property of PARSONS. They are loaned only with the borrower's expressed written agreement that they will

NO.	DATE	BY	CHKD	ENGR	PROJ	DESCRIPTION

ISSUED FOR CONSTRUCTION	
DRAWN	MCS 6-24-96
CHECKED	BHL 7-2-96
ENGINEER	PL 6-28-96
PROJ	HL 7-19-96



PARSONS
 100 WEST WALNUT STREET
 PASADENA, CALIFORNIA

LIGO
 CALIFORNIA INSTITUTE OF TECHNOLOGY
 MASSACHUSETTS INSTITUTE OF TECHNOLOGY

LASER INTERFEROMETER
 GRAVITATIONAL-WAVE OBSERVATORY
 SITE NO. 1 - HANFORD, WASHINGTON

TITLE	STRUCTURAL CORNER STATION LVEA FRAMING ELEVATIONS SHEET 7
PROJECT NUMBER	8094
AS NOTED	PP150969
SHEET NUMBER	WA-S-513