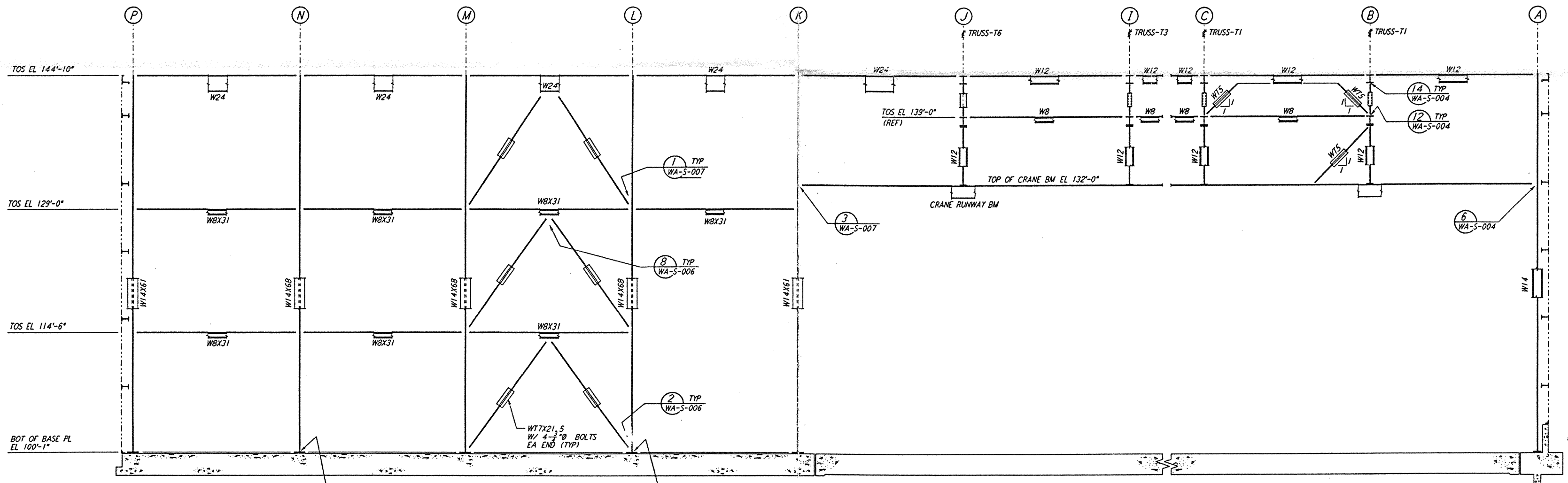
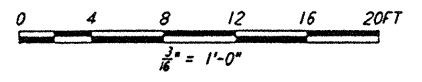


ELEVATION AT COLUMN LINE 5
1/8" = 1'-0"



PARTIAL ELEVATION AT COLUMN LINE 8
1/8" = 1'-0"

NOTE:
1. FOR NOTES SEE DRAWING WA-5-507.



not be reproduced, copied, loaned, exhibited, or used in any other way, except by written consent from PARSONS to the borrower.

This document and the design it covers are the property of PARSONS. They are loaned only with the borrower's expressed written agreement that they will

NO.	DATE	BY	CHKD	ENGR	PROJ	DESCRIPTION
A	4-19-96	MCS	307	PI	22711	FINAL DESIGN REVIEW & BID

DRAWN	MCS
CHECKED	
ENGINEER	
PROJ	

PARSONS
100 WEST WALNUT STREET
PASADENA, CALIFORNIA

LIGO
CALIFORNIA INSTITUTE OF TECHNOLOGY
MASSACHUSETTS INSTITUTE OF TECHNOLOGY

LASER INTERFEROMETER
GRAVITATIONAL-WAVE OBSERVATORY
SITE NO. 1 - HANFORD, WASHINGTON

TITLE: STRUCTURAL CORNER STATION LVEA FRAMING ELEVATIONS SHEET 3

AS NOTED PP150969 8094

WA-S-509

LIGO-D960330-A-1