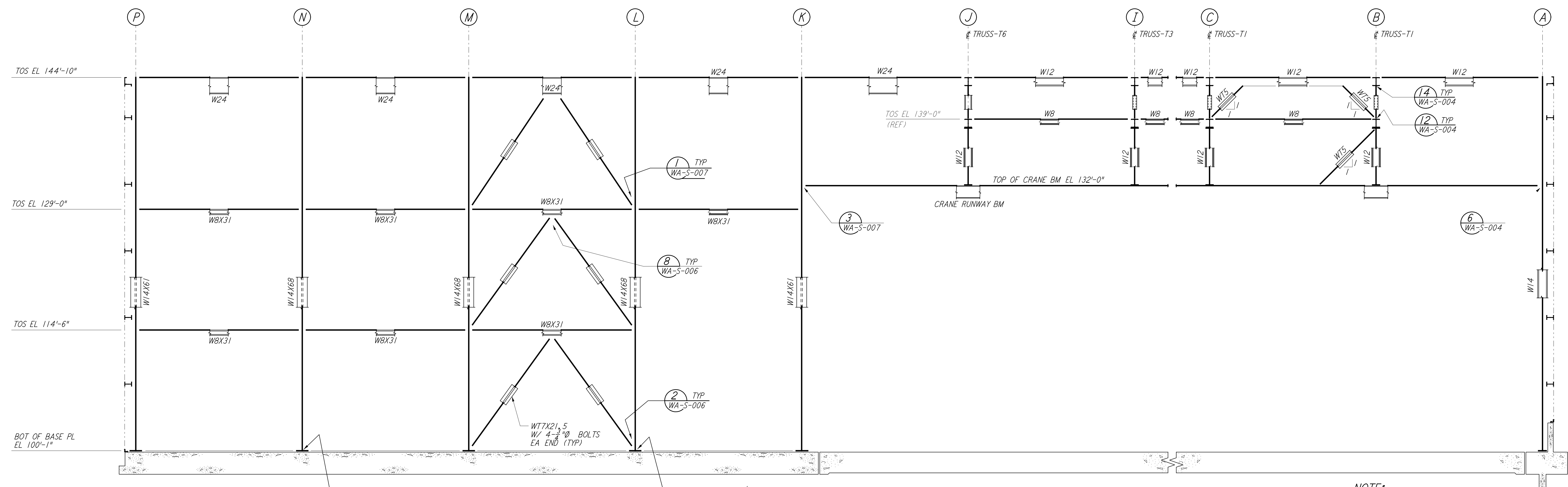
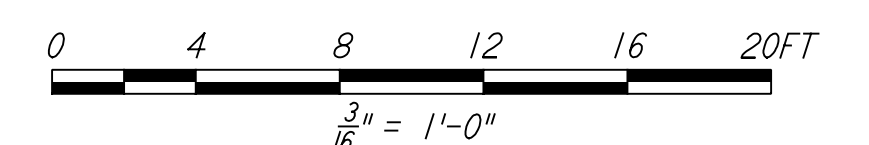


ELEVATION AT COLUMN LINE 5
 $\frac{3}{16}'' = 1'-0''$



PARTIAL ELEVATION AT COLUMN LINE 8
 $\frac{3}{16}'' = 1'-0''$

NOTE:
 1. FOR NOTES SEE DRAWING WA-S-507.

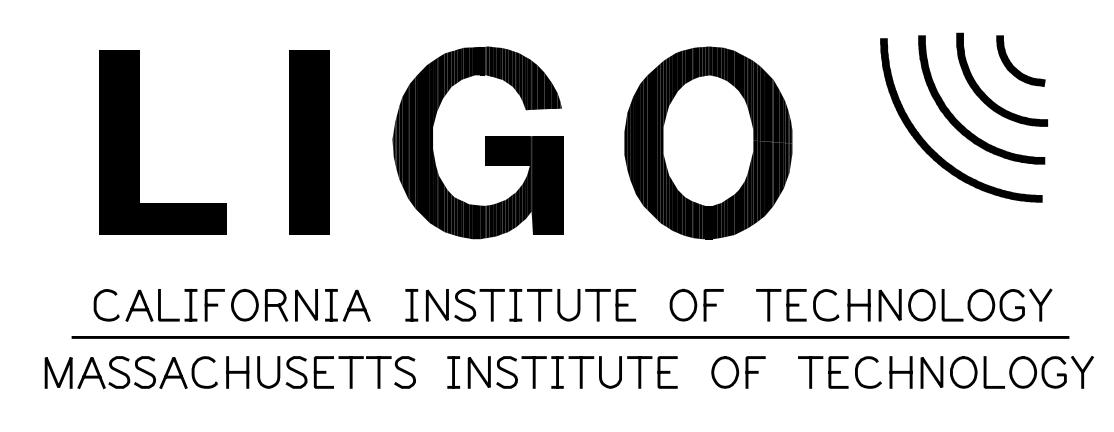


LIGO-D960330-01-0

NO.	DATE	BY	CHKD	ENGR	PROJ	DESCRIPTION
1	6-15-98	CKT				ISSUED FOR AS-BUILT

ISSUED FOR CONSTRUCTION		
DRAWN	MCS	6-24-96
CHECKED	DDM	7-2-96
ENGINEER	BP	6-28-96
PROJ	MDW	7-9-96

AS-BUILT DRAWINGS



LASER INTERFEROMETER GRAVITATIONAL-WAVE OBSERVATORY
 SITE NO. 1 - HANFORD, WASHINGTON

TITLE	SCALE	DRAWING NUMBER	PROJECT NUMBER
STRUCTURAL CORNER STATION LVEA FRAMING ELEVATIONS SHEET 3	AS NOTED	PP150969	8094
SHEET NUMBER		REVISIONS	
WA-S-509			

This document and the design it covers are the property of PARSONS. They are loaned only with the borrower's expressed written agreement that they will not be reproduced, copied, loaned, exhibited, or used in any other way, except by written consent from PARSONS to the borrower.

This document and the design it covers are the property of PARSONS. They are loaned only with the borrower's expressed written agreement that they will not be reproduced, copied, loaned, exhibited, or used in any other way, except by written consent from PARSONS to the borrower.

The user of this drawing is responsible for ensuring that the drawing is current and that all revisions are incorporated.