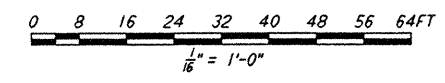
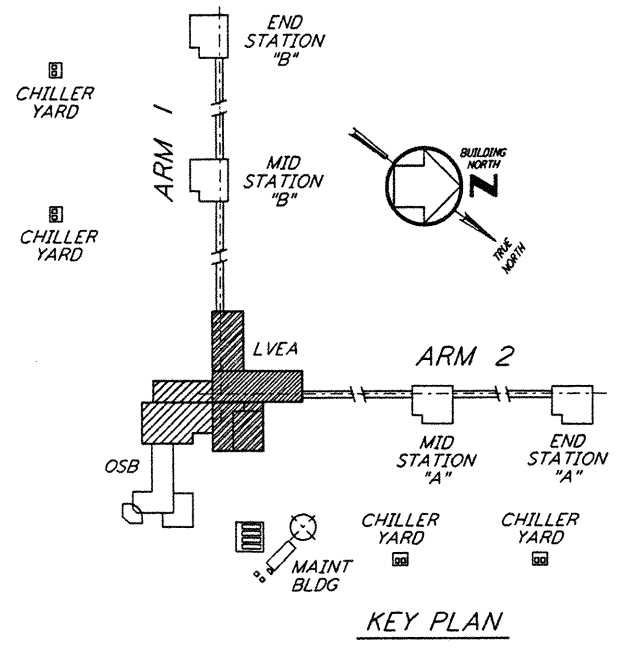


- NOTES:**
- FOR NOTES SEE DRAWING WA-S-504.
 - DENOTES WTS VERTICAL BRACE AND POINTS TO LOW END. FOR CONNECTION SEE DETAIL (5) SIM WA-S-006



LIGO-D960326-B-0

This document and the design it covers are the property of PARSONS. They are loaned only with the borrower's expressed written agreement that they will not be reproduced, copied, loaned, exhibited, or used in any other way, except by written consent from PARSONS to the borrower.

NO.	DATE	BY	CHKD	ENGR	PROJ	DESCRIPTION
B	5-22-96	MCS	DDM	H	TDM	BID ADDENDUM #2
A	4-19-96	MCS	DDM	BP	TDM	FINAL DESIGN REVIEW & BID

DRAWN	MCS
CHECKED	
ENGINEER	
PROJ	

PARSONS
 100 WEST WALNUT STREET
 PASADENA, CALIFORNIA

LIGO
 CALIFORNIA INSTITUTE OF TECHNOLOGY
 MASSACHUSETTS INSTITUTE OF TECHNOLOGY

LASER INTERFEROMETER
 GRAVITATIONAL-WAVE OBSERVATORY
 SITE NO. 1 - HANFORD, WASHINGTON

TITLE	SCALE	CONTRACT NUMBER	PROJECT NUMBER
STRUCTURAL CORNER STATION LVEA - TRUSS BOTTOM CHORD FRMG PLAN	AS NOTED	PP150969	8094
SHEET NUMBER		REVISION	
WA-S-505		A	