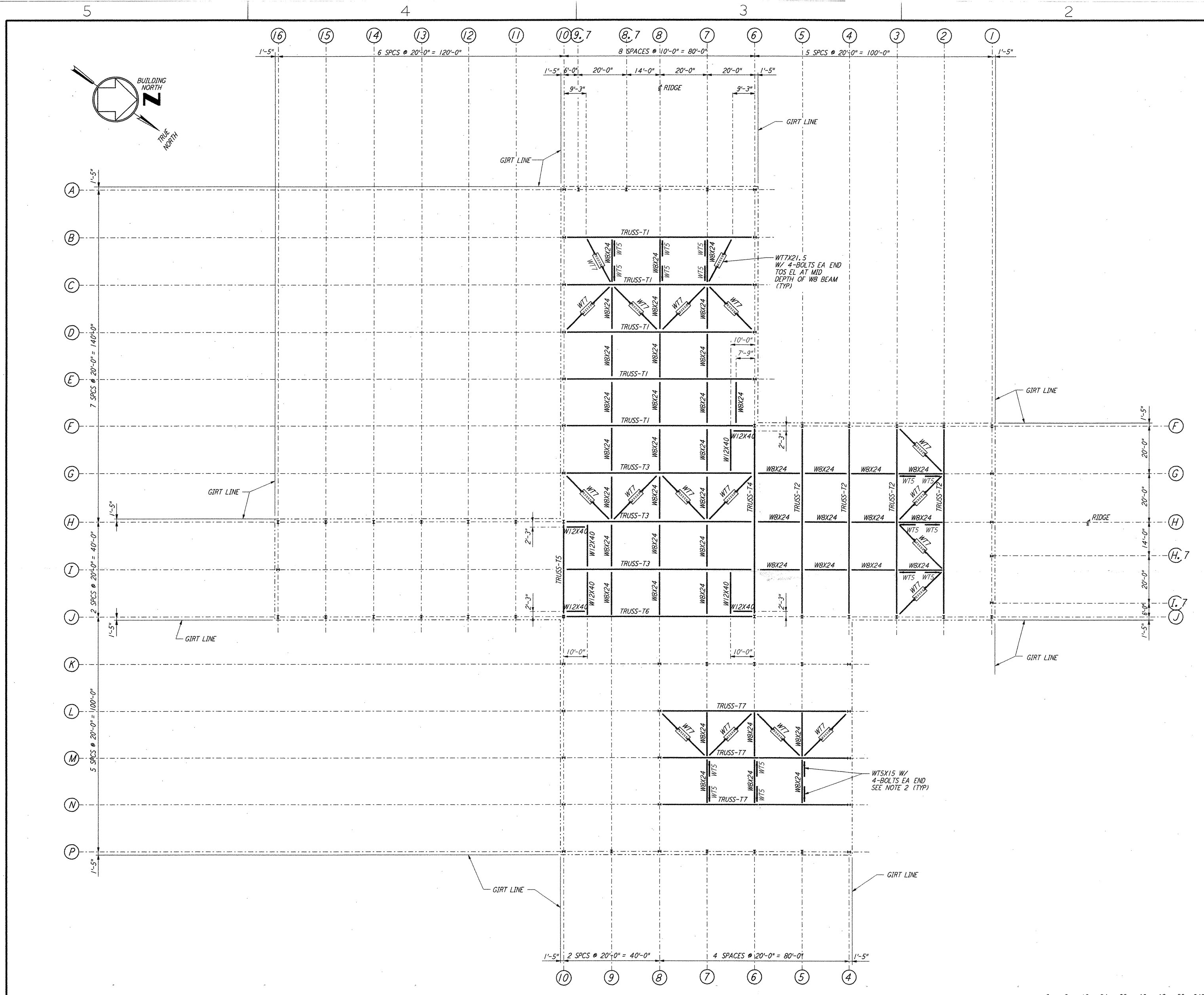
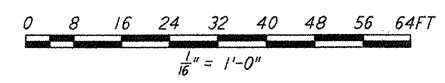
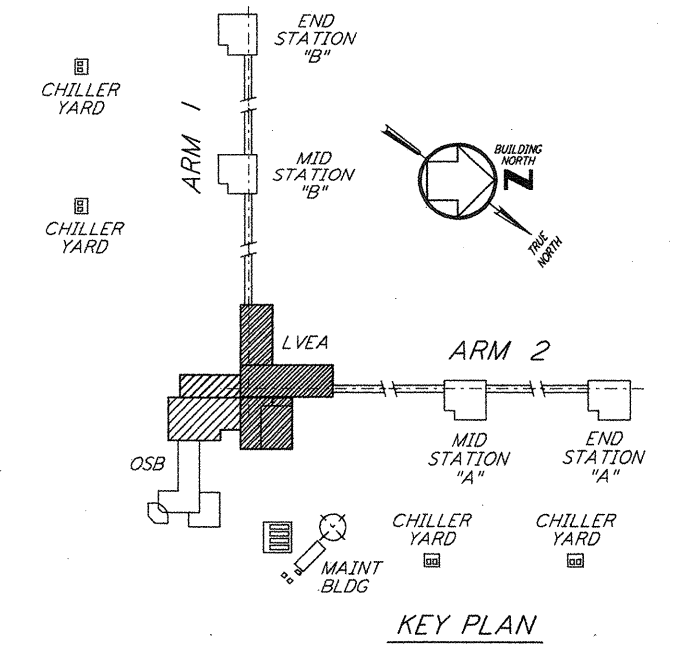


This document and the design it covers are the property of PARSONS. They are loaned only with the borrower's expressed written agreement that they will not be reproduced, copied, loaned, exhibited, or used in any other way, except by written consent from PARSONS to the borrower.



- NOTES:**
- FOR NOTES SEE DRAWING WA-S-504.
  - DENOTES WTS VERTICAL BRACE AND POINTS TO LOW END. FOR CONNECTION SEE DETAIL (S) SIM WA-S-006



NO.	DATE	BY	CHKD	ENGR	PROJ	DESCRIPTION
1	6-15-98	CKT	BP	MDW	PP	ISSUED FOR AS-BUILT

ISSUED FOR CONSTRUCTION

DRAWN	MCS	6-24-96
CHECKED	DDM	7-2-96
ENGINEER	BP	6-28-96
PROJ	MDW	7-9-96

**AS-BUILT DRAWINGS**

**PARSONS**

100 WEST WALNUT STREET  
 PASADENA, CALIFORNIA

**LIGO**

CALIFORNIA INSTITUTE OF TECHNOLOGY  
 MASSACHUSETTS INSTITUTE OF TECHNOLOGY

**LIGO-D960326-01-O**

LASER INTERFEROMETER  
 GRAVITATIONAL-WAVE OBSERVATORY  
 SITE NO. 1 - HANFORD, WASHINGTON

TITLE	SCALE	CONTRACT NUMBER	PROJECT NUMBER
STRUCTURAL CORNER STATION LVEA - TRUSS BOTTOM CHORD FRMG PLAN	AS NOTED	PP150969	8094
SHEET NUMBER			REVISIONS
<b>WA-S-505</b>			