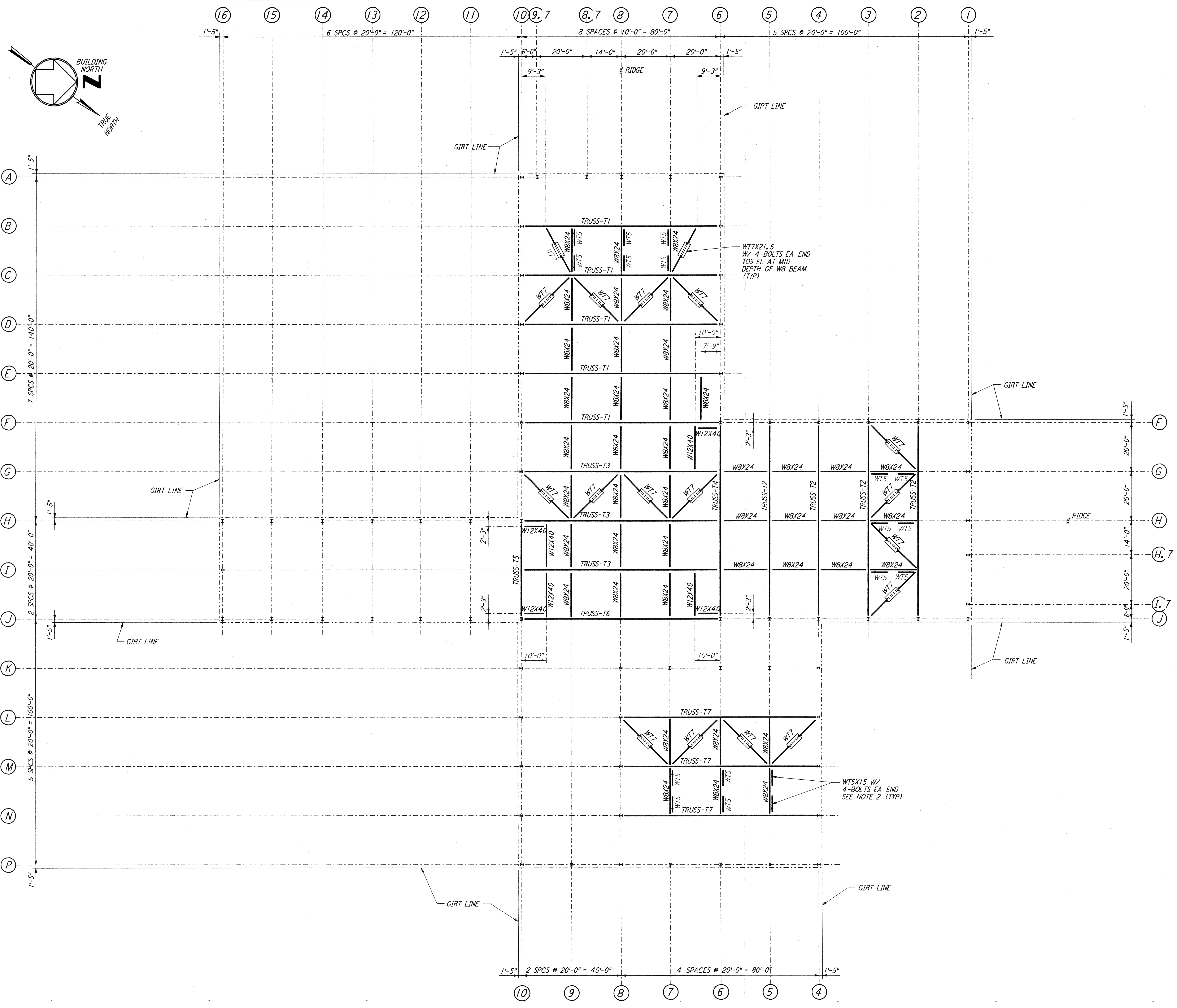
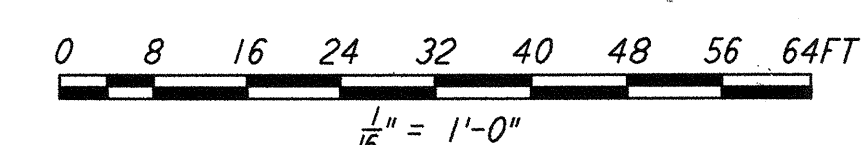
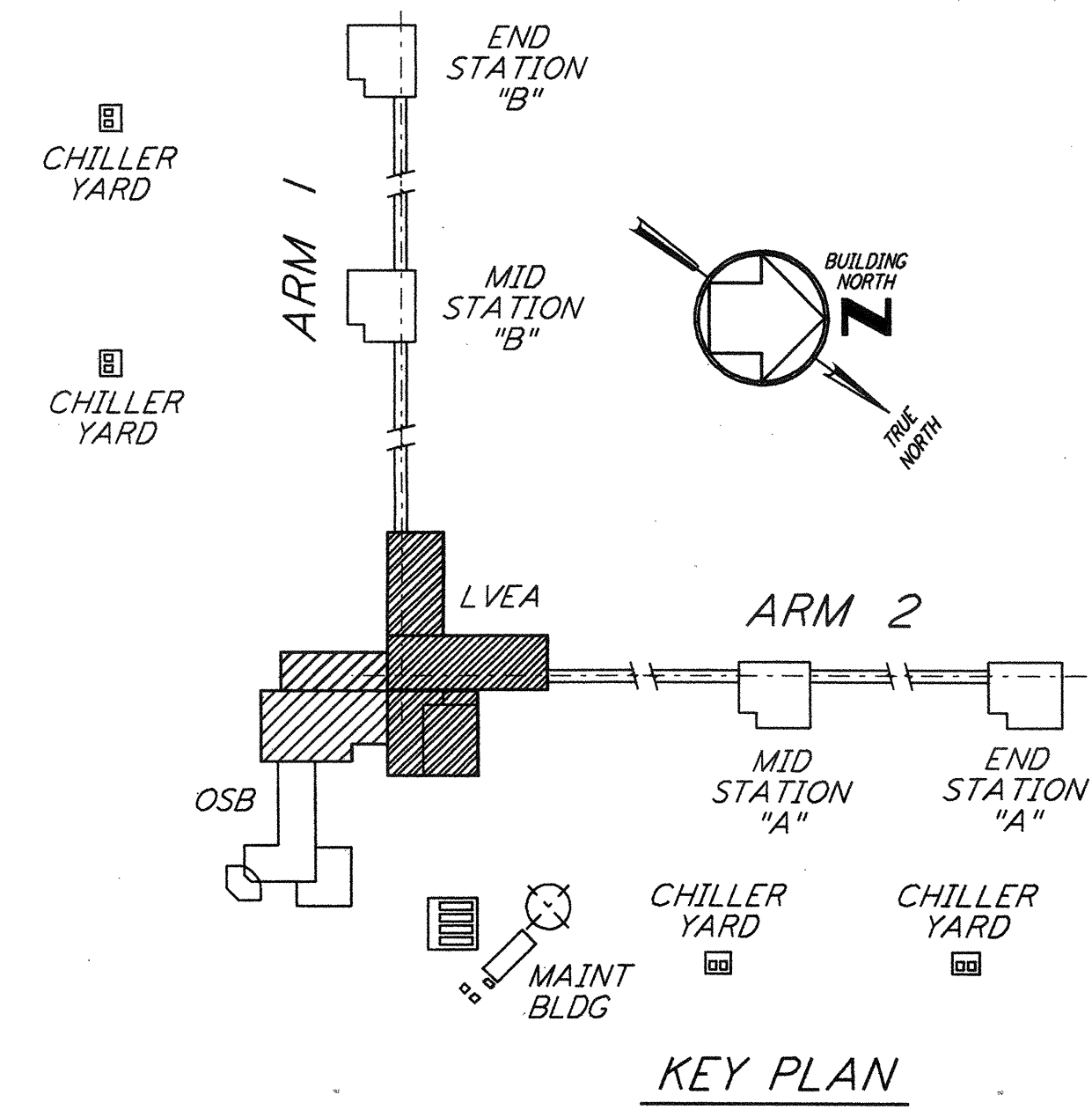


This document and the design it covers are the property of **PARSONS**. They are loaned only with the borrower's expressed written agreement that they will not be reproduced, copied, loaned, exhibited, or used in any other way, except by written consent from **PARSONS** to the borrower.



- NOTES:**
- FOR NOTES SEE DRAWING WA-S-504.
 - DENOTES WTS VERTICAL BRACE AND POINTS TO LOW END. FOR CONNECTION SEE DETAIL (5) SIM WA-S-006



NO.	DATE	BY	CHKD	ENGR	PROJ	DESCRIPTION
1	6-15-98	CKT	BP	MDW	DP	ISSUED FOR AS-BUILT

ISSUED FOR CONSTRUCTION	
DRAWN	MCS 6-24-96
CHECKED	DDM 7-2-96
ENGINEER	BP 6-28-96
PROJ	MDW 7-9-96
AS-BUILT DRAWINGS	

PARSONS
 100 WEST WALNUT STREET
 PASADENA, CALIFORNIA

LIGO
 CALIFORNIA INSTITUTE OF TECHNOLOGY
 MASSACHUSETTS INSTITUTE OF TECHNOLOGY

LIGO-D960326-01-0

LASER INTERFEROMETER
 GRAVITATIONAL-WAVE OBSERVATORY
 SITE NO. 1 - HANFORD, WASHINGTON

TITLE	SCALE	CONTRACT NUMBER	PROJECT NUMBER
STRUCTURAL CORNER STATION LVEA - TRUSS BOTTOM CHORD FRMG PLAN	AS NOTED	PP150969	8094
SHEET NUMBER		REVISIONS	
WA-S-505		▲	