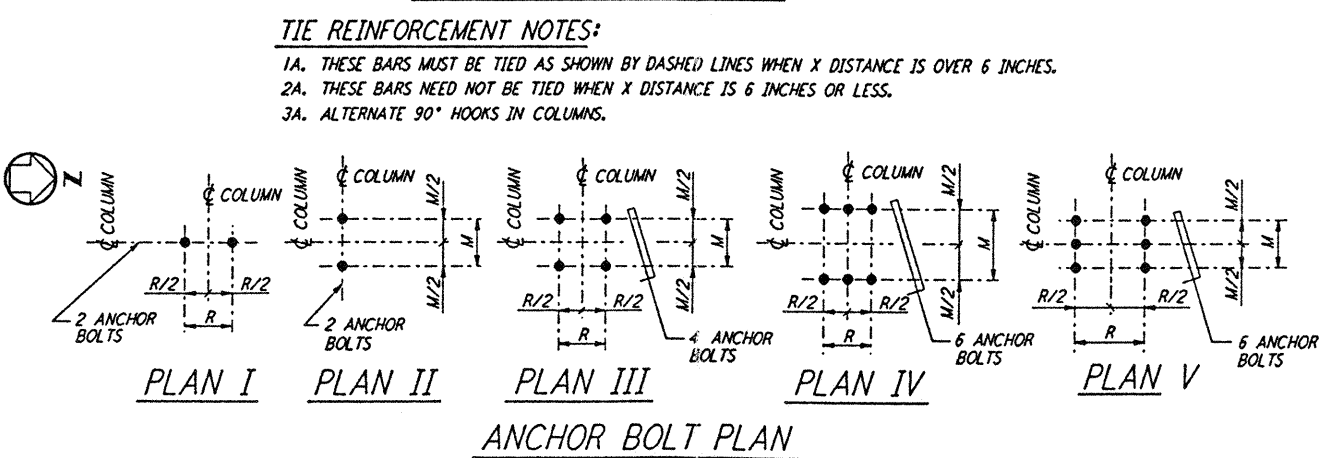
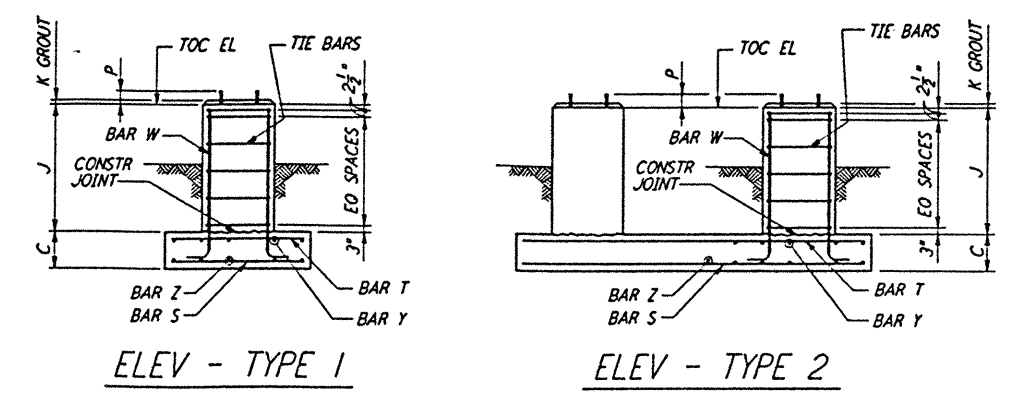


- NOTES:**
- CONSTRUCTION SHALL COMPLY WITH ALL THE REQUIREMENTS OF THE GENERAL NOTES ON DRAWING WA-S-001.
 - THE BAR SPACING IS BASED ON CENTER TO CENTER OF TIE SET.
 - FOR ANCHOR BOLT DETAILS SEE DRAWING WA-S-003.



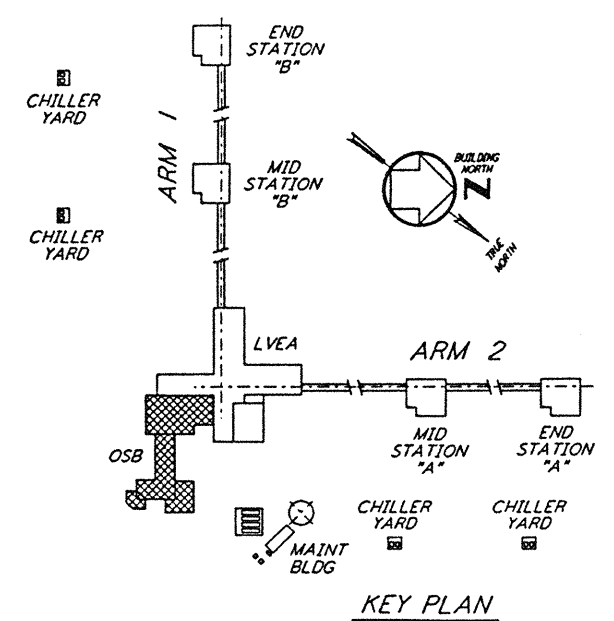
TIE REINFORCEMENT NOTES:

1A. THESE BARS MUST BE TIED AS SHOWN BY DASHED LINES WHEN X DISTANCE IS OVER 6 INCHES.
 2A. THESE BARS NEED NOT BE TIED WHEN X DISTANCE IS 6 INCHES OR LESS.
 3A. ALTERNATE 90° HOOKS IN COLUMNS.

not be reproduced, copied, loaned, exhibited, or used in any other way, except by written consent from PARSONS to the borrower.

This document and the design it covers are the property of PARSONS. They are loaned only with the borrower's expressed written agreement that they will

NO. OF FDS RECD	FOUNDATION LOCATION (COL LINES)	TOP OF CONC EL	FOUNDATION TYPE	DIMENSIONS														ANCHOR BOLTS PER PIER				REINFORCING PER FOUNDATION										CONC CY	FDM LOC PLAN	REMARKS						
				PLAN	ELEV	A	B	C	D	F	G	H	J	K	M	R	N	ANCHOR BOLT PLAN	TYPE	NO PER PIER	SIZE D	L	P	BAR S NO	BAR S SIZE	BAR Z NO	BAR Z SIZE	BAR T NO	BAR T SIZE	BAR Y NO	BAR Y SIZE				BAR W NO	BAR W SIZE	TIE BAR TYPE	TIE BAR SIZE	NO RECD	
1	V-18	100'-0"	B	2	4'-0"	9'-0"	1'-6"	10"	10"	10"	10"	1'-2"	1"	7"	7"	5'-0"	III	2	4	1"	1'-4"	4"	5	*6	10	*6	5	*6	10	*6	8	*6	B	*4	3	2.3	WA-S-102			
	V.2-18	100'-0"						10"	10"	10"	10"	1'-2"	1"	7"	7"		III	2	4	1"	1'-4"	4"																		
1	W-17.2	100'-0"	B	2	4'-0"	9'-0"	1'-6"	10"	10"	10"	10"	1'-2"	1"	7"	7"	5'-0"	III	2	4	1"	1'-4"	4"	5	*6	10	*6	5	*6	10	*6	8	*6	B	*4	3	2.3	WA-S-102			
	W-17	100'-0"						10"	10"	10"	10"	1'-2"	1"	7"	7"		III	2	4	1"	1'-4"	4"																		
1	T-16.3	100'-0"	B	2	4'-0"	24'-0"	1'-6"	10"	10"	10"	10"	1'-2"	1"	7"	7"	20'-0"	III	2	4	1"	1'-4"	4"	5	*6	25	*6	5	*6	25	*6	8	*6	B	*4	3	6.0	WA-S-102			
	U-16.3	100'-0"						10"	10"	10"	10"	1'-2"	1"	7"	7"		III	2	4	1"	1'-4"	4"																		
1	W-15.3	100'-0"	B	2	4'-0"	24'-0"	1'-6"	10"	10"	10"	10"	1'-2"	1"	7"	7"	20'-0"	III	2	4	1"	1'-4"	4"	5	*6	25	*6	5	*6	25	*6	8	*6	B	*4	3	6.0	WA-S-102			
	W-14.3	100'-0"						10"	10"	10"	10"	1'-2"	1"	7"	7"		III	2	4	1"	1'-4"	4"																		
1	U-18	100'-0"	B	2	6'-0"	24'-0"	1'-6"	10"	10"	10"	10"	1'-6"	1"	7"	7"	20'-0"	III	2	4	1"	1'-4"	4"	7	*6	25	*6	7	*6	25	*6	8	*6	B	*4	3	9.0	WA-S-102			
	U-17	100'-0"						10"	10"	10"	10"	1'-6"	1"	7"	7"		III	2	4	1"	1'-4"	4"																		
1	K.3-17	100'-0"						10"	10"	10"	10"	2'-6"	1"	7"	7"		III	2	4	1"	1'-4"	4"																		
	J.3-17	100'-0"						10"	10"	10"	10"	2'-6"	1"	7"	7"		III	2	4	1"	1'-4"	4"																		
	J.3-16.3	100'-0"						10"	10"	10"	10"	2'-6"	1"	7"	7"		III	2	4	1"	1'-4"	4"																		
	J.3-15.3	100'-0"						10"	10"	10"	10"	2'-6"	1"	7"	7"		III	2	4	1"	1'-4"	4"																		
1	K.3-12.3	100'-0"												1"	7"	7"		III	2	4	1"	1'-4"	4"																	
	J.3-12.3	100'-0"												1"	7"	7"		III	2	4	1"	1'-4"	4"																	
	J.3-11.3	100'-0"												1"	7"	7"		III	2	4	1"	1'-4"	4"																	
	J.3-10.3	100'-0"												1"	7"	7"		III	2	4	1"	1'-4"	4"																	
1	P.3-14.3	100'-0"						10"	10"	10"	10"	2'-6"	1"	7"	7"		III	2	4	1"	1'-4"	4"																		
	N.3-14.3	100'-0"						10"	10"	10"	10"	2'-6"	1"	7"	7"		III	2	4	1"	1'-4"	4"																		
1	N.3-13.3	100'-0"						10"	10"	10"	10"	2'-6"	1"	7"	7"		III	2	4	1"	1'-4"	4"																		
	M.3-11.3	100'-0"												1"	7"	7"		III	2	4	1"	1'-4"	4"																	
1	M.3-10.3	100'-0"												1"	7"	7"		III	2	4	1"	1'-4"	4"																	



NO.	DATE	BY	CHKD	ENGR	PROJ	DESCRIPTION
A	4-19-96	MCS				FINAL DESIGN REVIEW & BID

DRAWN	MCS
CHECKED	
ENGINEER	
PROJ	

PARSONS
 100 WEST WALNUT STREET
 PASADENA, CALIFORNIA

LIGO
 CALIFORNIA INSTITUTE OF TECHNOLOGY
 MASSACHUSETTS INSTITUTE OF TECHNOLOGY

LASER INTERFEROMETER
 GRAVITATIONAL-WAVE OBSERVATORY
 SITE NO. 1 - HANFORD, WASHINGTON

STRUCTURAL
 CORNER STATION - OSB
 FOUNDATION SCHEDULE
 AND DETAILS SHEET 2

SCALE: NONE
 CONTRACT NUMBER: PPI50969
 PROJECT NUMBER: 8094
WA-S-403