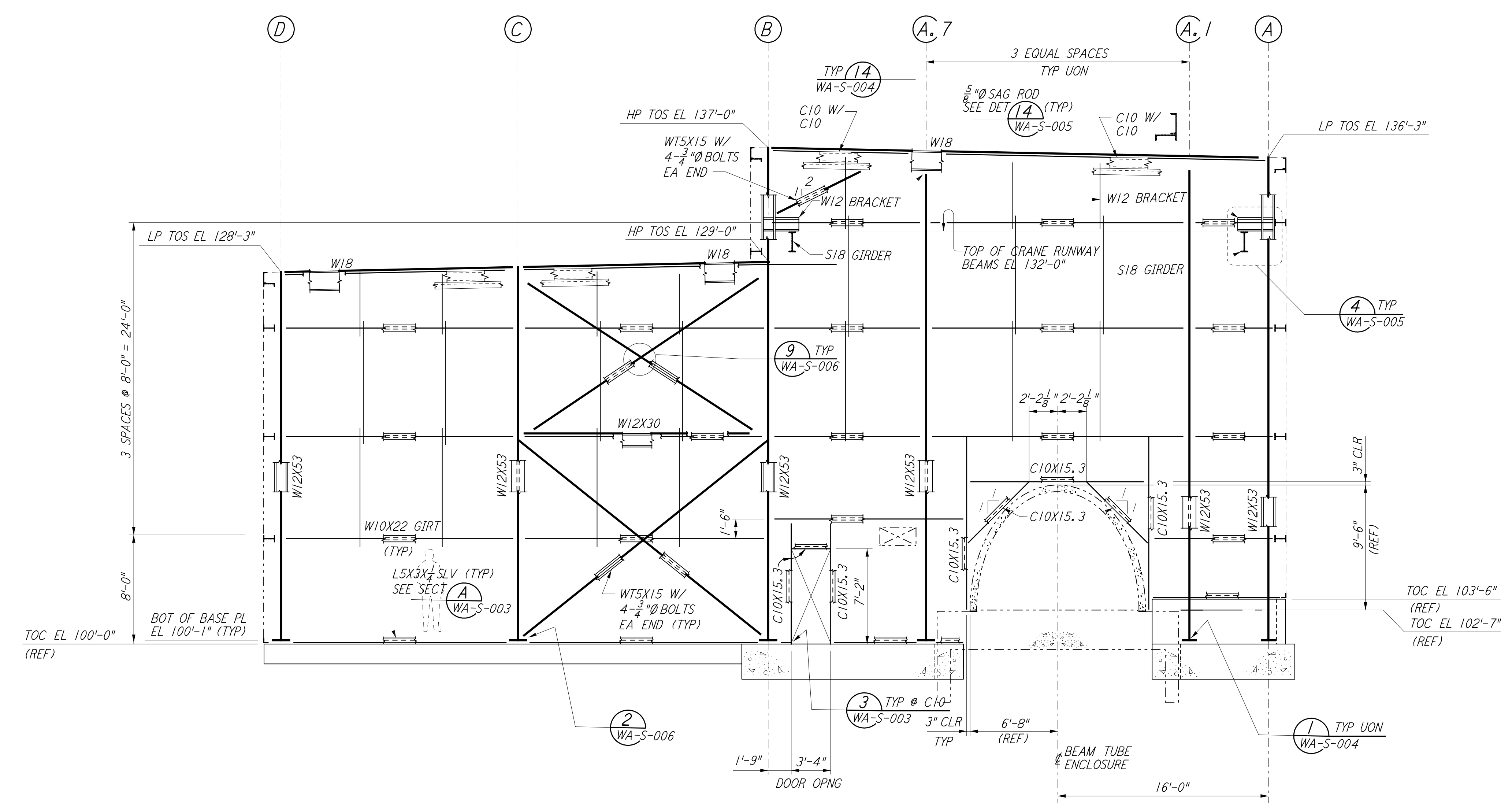
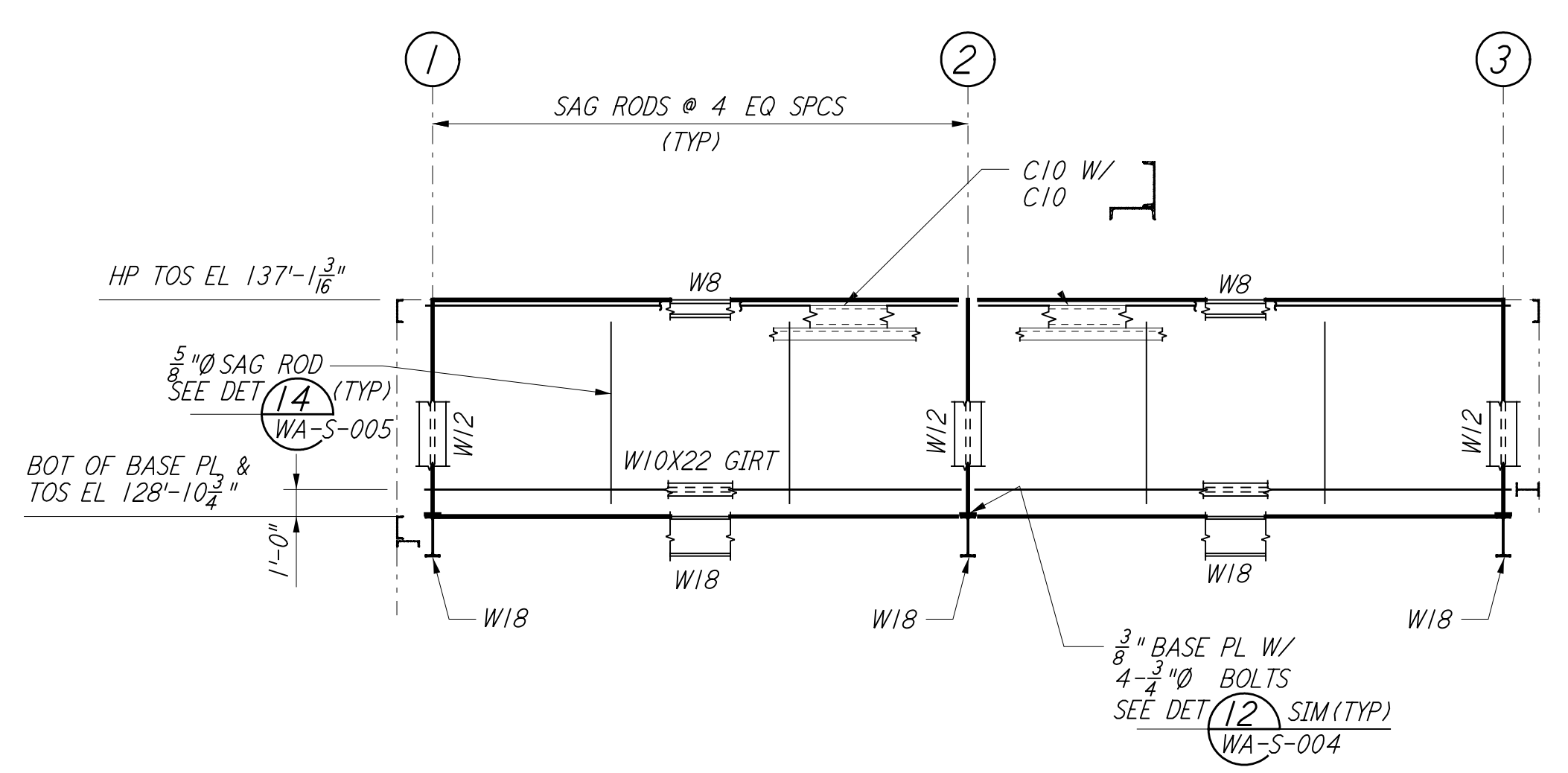


This document and the design it covers are the property of PARSONS. They are loaned only with the borrower's expressed written agreement that they will not be reproduced, copied, loaned, exhibited, or used in any other way, except by written consent from PARSONS to the borrower.

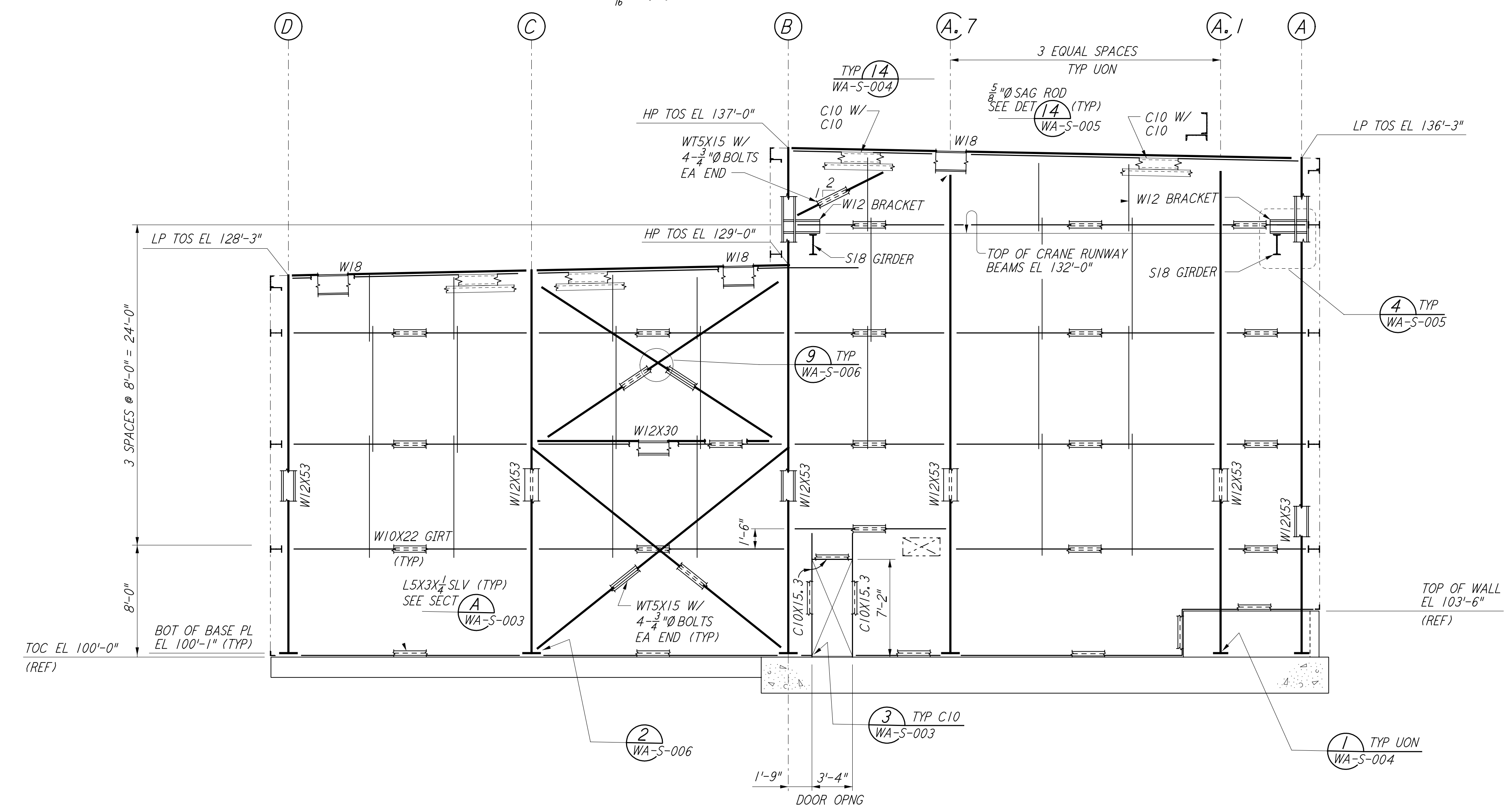
This document and the design it covers are the property of PARSONS. They are loaned only with the borrower's expressed written agreement that they will not be reproduced, copied, loaned, exhibited, or used in any other way, except by written consent from PARSONS to the borrower.



LOOKING WEST FOR MID STATION "B" ON ARM 1 (SOUTHWEST ARM)
 LOOKING SOUTH FOR MID STATION "A" ON ARM 2 (NORTHWEST ARM)
 ELEVATION AT COLUMN LINE 5
 $\frac{3}{16}'' = 1'-0''$

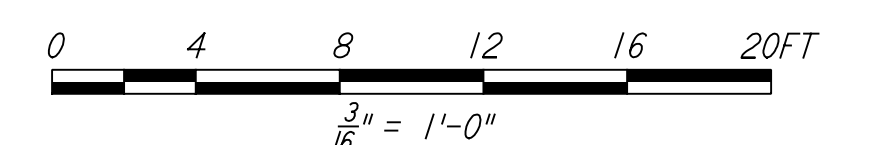


LOOKING SOUTH FOR END STATION "B" & MID STATION "B" ON ARM 1 (SOUTHWEST ARM)
 LOOKING WEST FOR END STATION "A" & MID STATION "A" ON ARM 2 (NORTHWEST ARM)
 ELEVATION AT COLUMN LINE B.1
 $\frac{3}{16}'' = 1'-0''$



LOOKING WEST FOR END STATION "B" ON ARM 1 (SOUTHWEST ARM)
 LOOKING SOUTH FOR END STATION "A" ON ARM 2 (NORTHWEST ARM)
 ELEVATION AT COLUMN LINE 5
 $\frac{3}{16}'' = 1'-0''$

NOTE:
 FOR NOTES SEE DRAWING WA-S-205.



LIGO-D960313-01-0

NO.	DATE	BY	CHKD	ENGR	PROJ	DESCRIPTION
1	6-15-98	CKT				ISSUED FOR AS-BUILT

NO.	DATE	BY	CHKD	ENGR	PROJ	DESCRIPTION
1	6-24-96	MCS				ISSUED FOR CONSTRUCTION
2	7-2-96	DDM				CHECKED
3	6-28-96	BP				ENGINEER
4	7-9-96	MDW				PROJ

AS-BUILT DRAWINGS
 DRAWN MCS 6-24-96
 CHECKED DDM 7-2-96
 ENGINEER BP 6-28-96
 PROJ MDW 7-9-96



LASER INTERFEROMETER
 GRAVITATIONAL-WAVE OBSERVATORY
 SITE NO. 1 - HANFORD, WASHINGTON

TITLE	STRUCTURAL MID & END STATIONS FRAMING ELEVATIONS SHEET 3	AS NOTED	PP150969	8094
SHEET NUMBER	WA-S-207	PROJECT NUMBER		