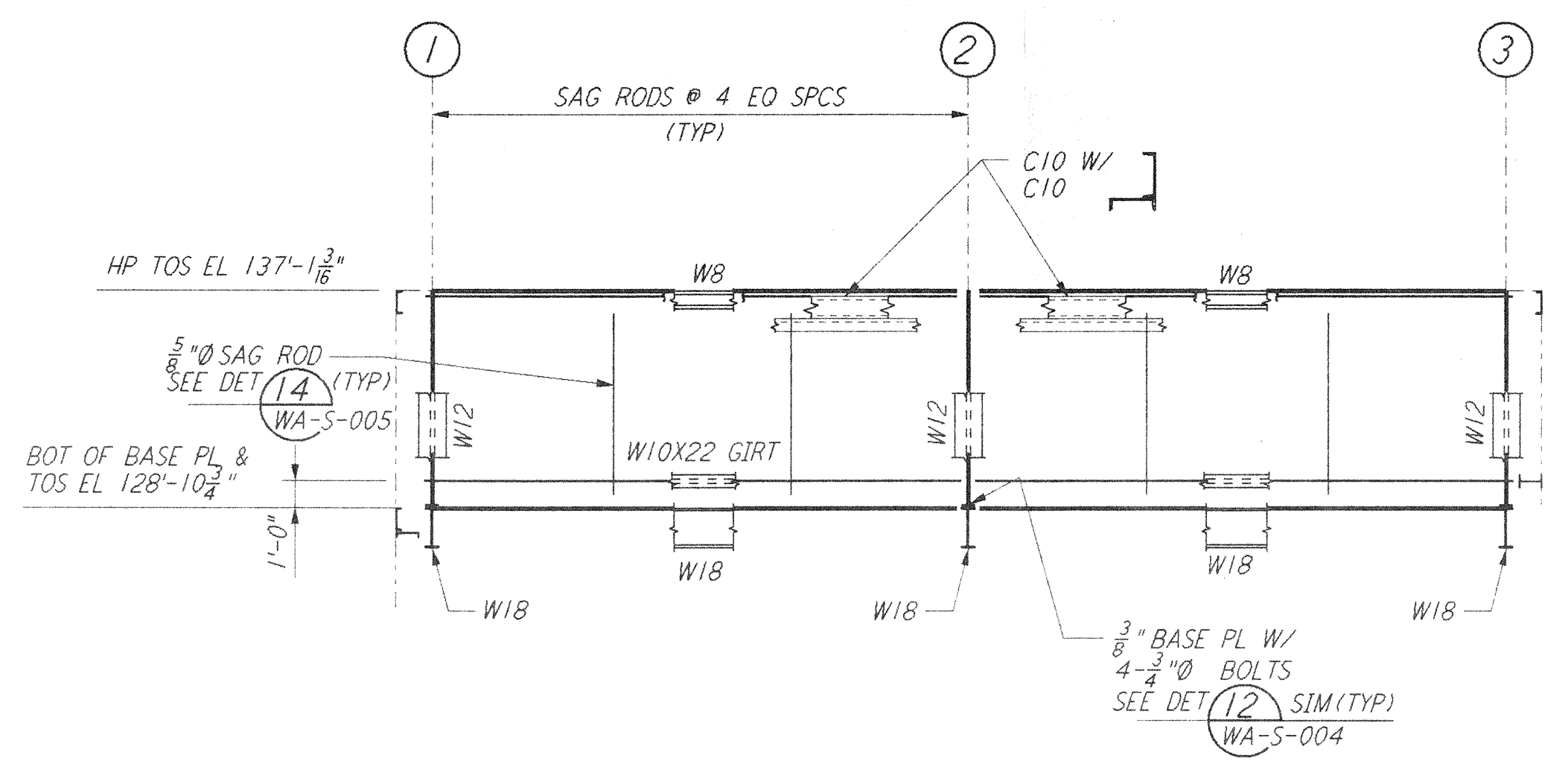
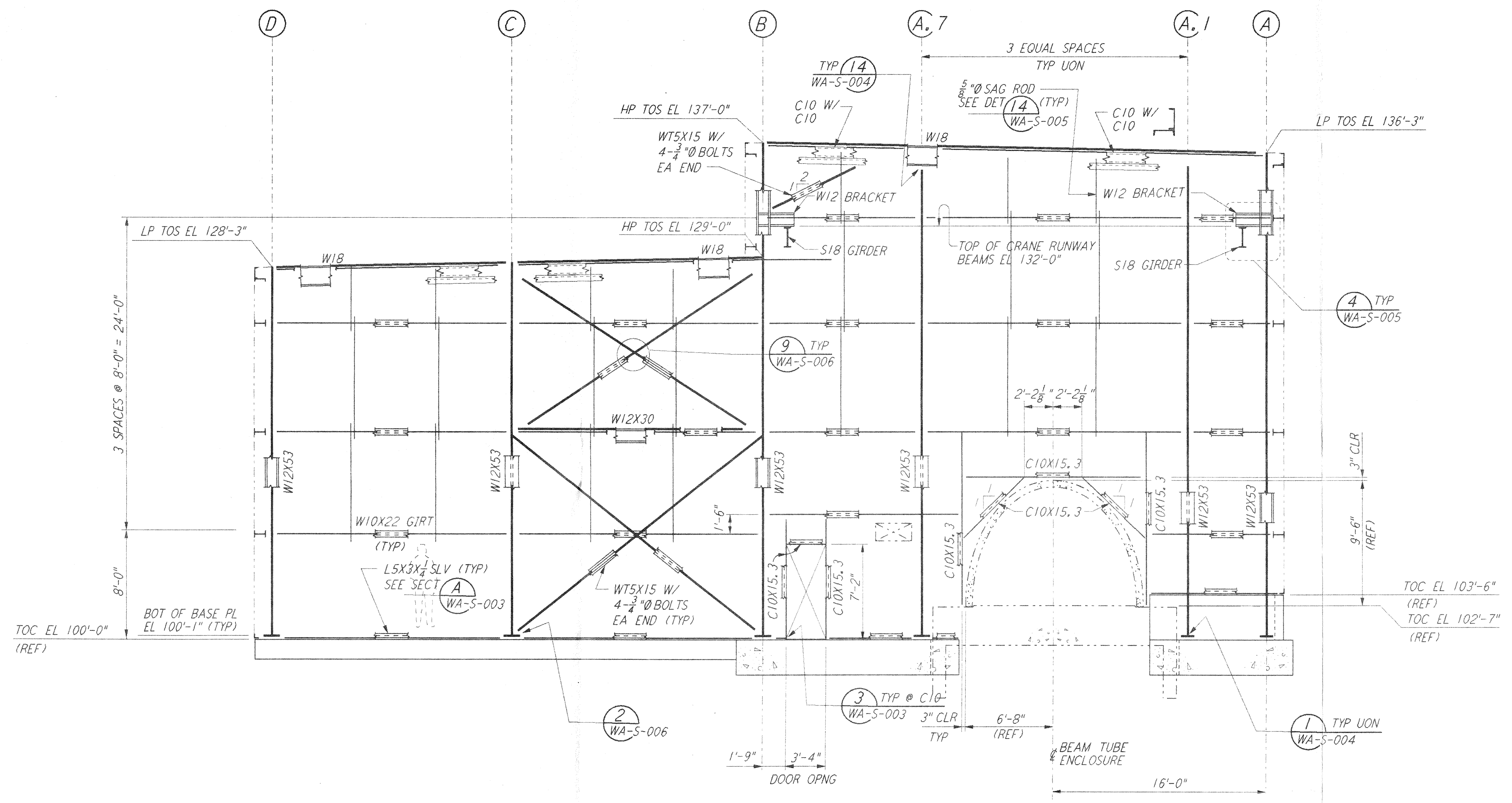


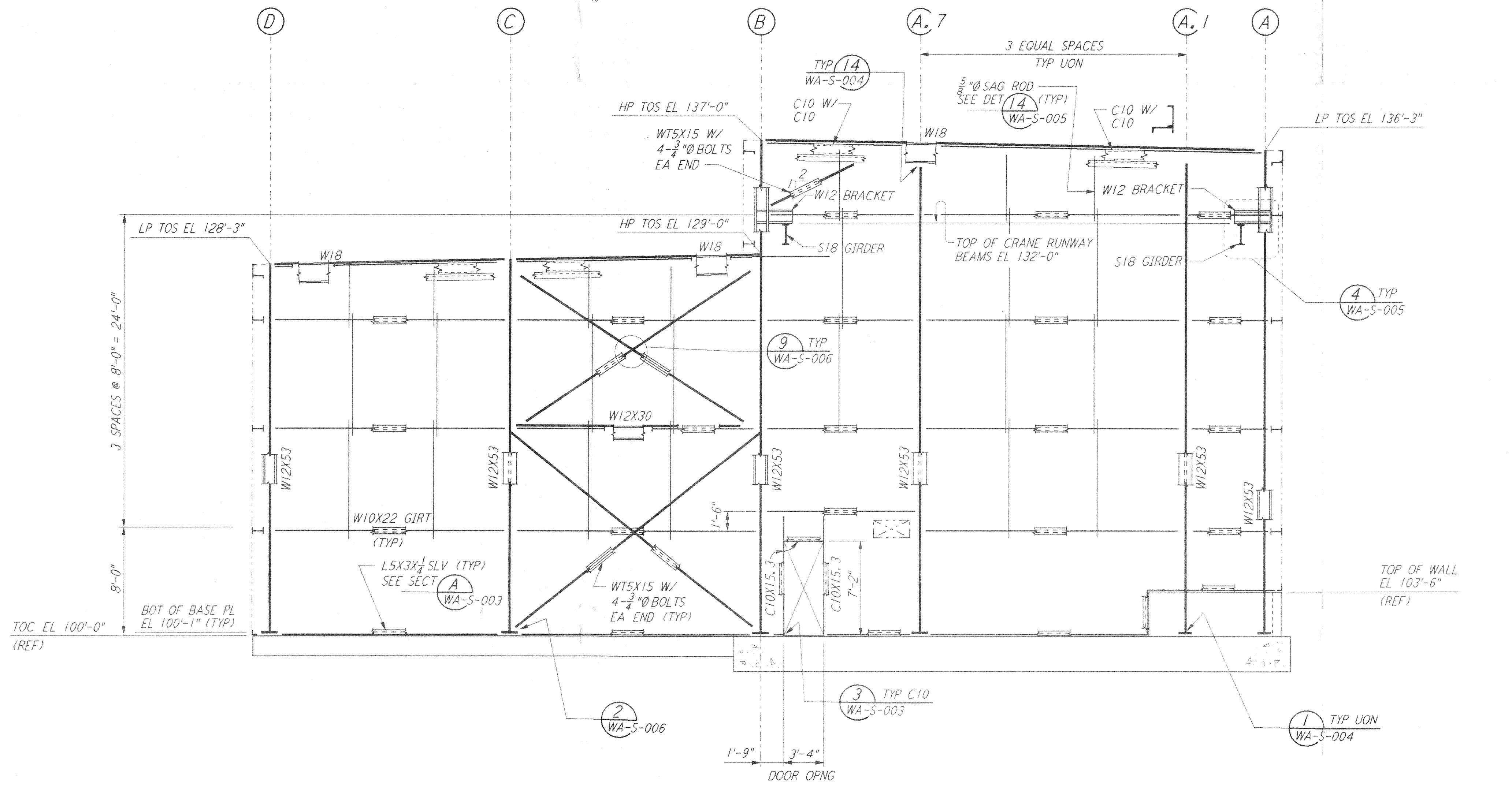
not be reproduced, copied, loaned, exhibited, or used in any other way, except by written consent from PARSONS to the borrower.

This document and the design it covers are the property of PARSONS. They are loaned only with the borrower's expressed written agreement that they will



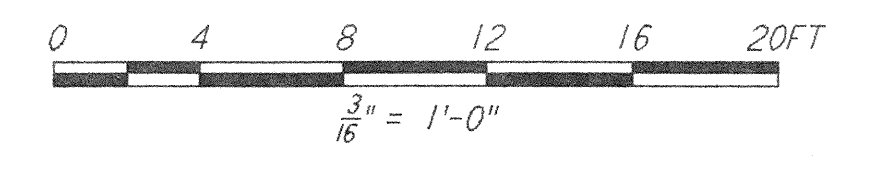
LOOKING SOUTH FOR END STATION "B" & MID STATION "B" ON ARM 1 (SOUTHWEST ARM)
 LOOKING WEST FOR END STATION "A" & MID STATION "A" ON ARM 2 (NORTHWEST ARM)
 ELEVATION AT COLUMN LINE B.1
 $\frac{3}{16}'' = 1'-0''$

LOOKING WEST FOR MID STATION "B" ON ARM 1 (SOUTHWEST ARM)
 LOOKING SOUTH FOR MID STATION "A" ON ARM 2 (NORTHWEST ARM)
 ELEVATION AT COLUMN LINE 5
 $\frac{3}{16}'' = 1'-0''$



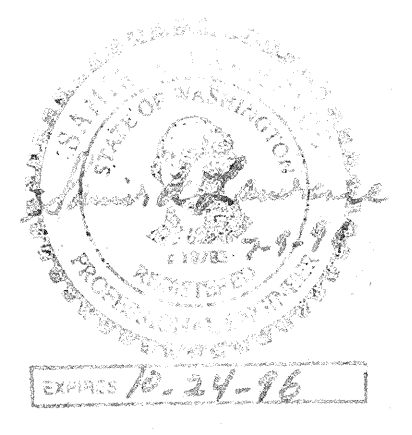
LOOKING WEST FOR END STATION "B" ON ARM 1 (SOUTHWEST ARM)
 LOOKING SOUTH FOR END STATION "A" ON ARM 2 (NORTHWEST ARM)
 ELEVATION AT COLUMN LINE 5
 $\frac{3}{16}'' = 1'-0''$

NOTE:
 FOR NOTES SEE DRAWING WA-S-205.



NO.	DATE	BY	CHKD	ENGR	PROJ	DESCRIPTION

ISSUED FOR CONSTRUCTION	
DRAWN	MCS 6-24-96
CHECKED	8811 7-2-96
ENGINEER	61 6-28-96
PROJ	116 7/13/96



PARSONS
 100 WEST WALNUT STREET
 PASADENA, CALIFORNIA

LIGO
 CALIFORNIA INSTITUTE OF TECHNOLOGY
 MASSACHUSETTS INSTITUTE OF TECHNOLOGY

LASER INTERFEROMETER
 GRAVITATIONAL-WAVE OBSERVATORY
 SITE NO. 1 - HANFORD, WASHINGTON

TITLE	AS NOTED	CONTRACT NUMBER	PROJECT NUMBER
STRUCTURAL MID & END STATIONS FRAMING ELEVATIONS SHEET 3	PP150969	8094	
SHEET NUMBER		REVISIONS	
WA-S-207			

LIGO-D960313-00-0
 LIGOWAF.BDR