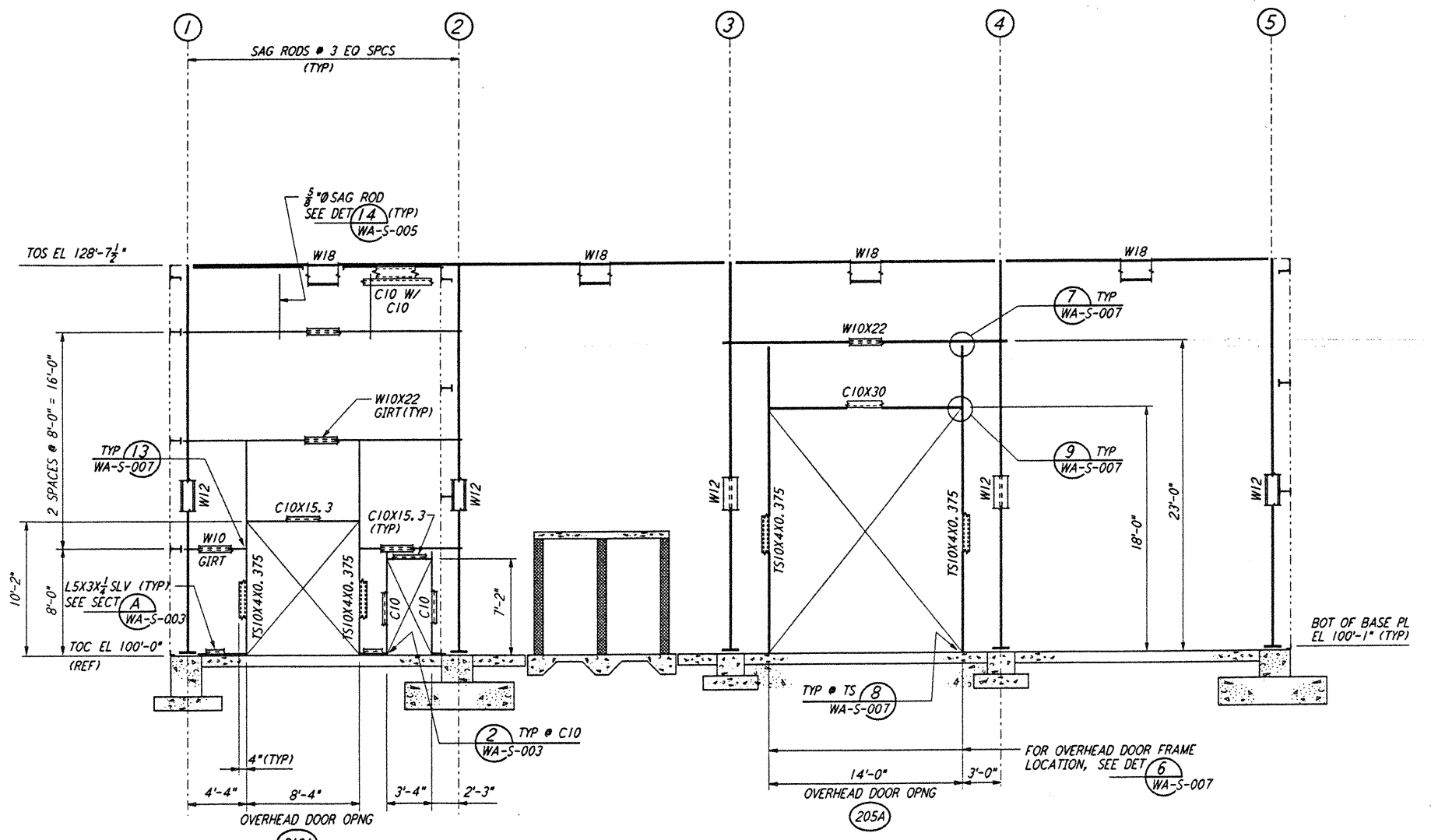
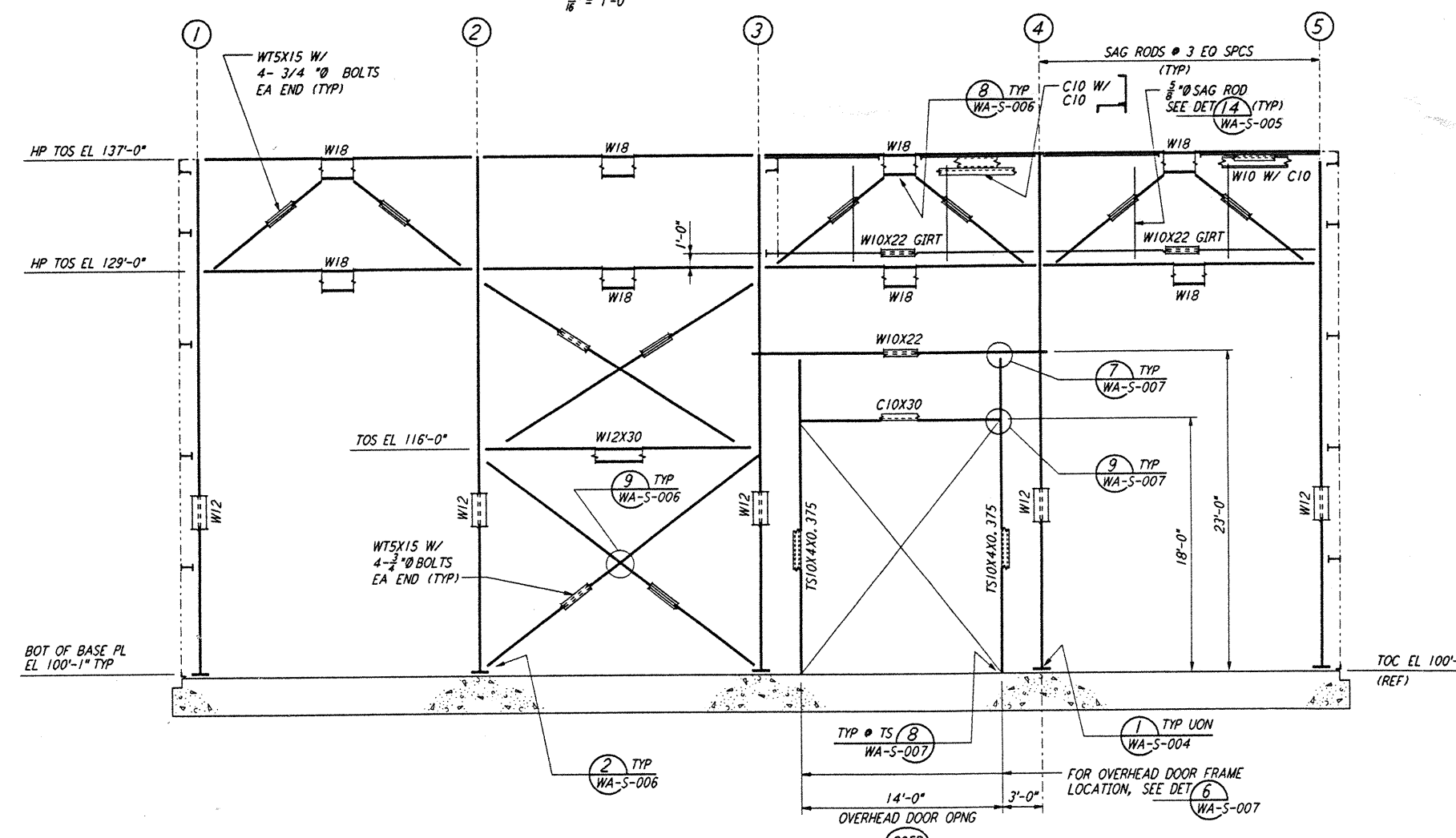


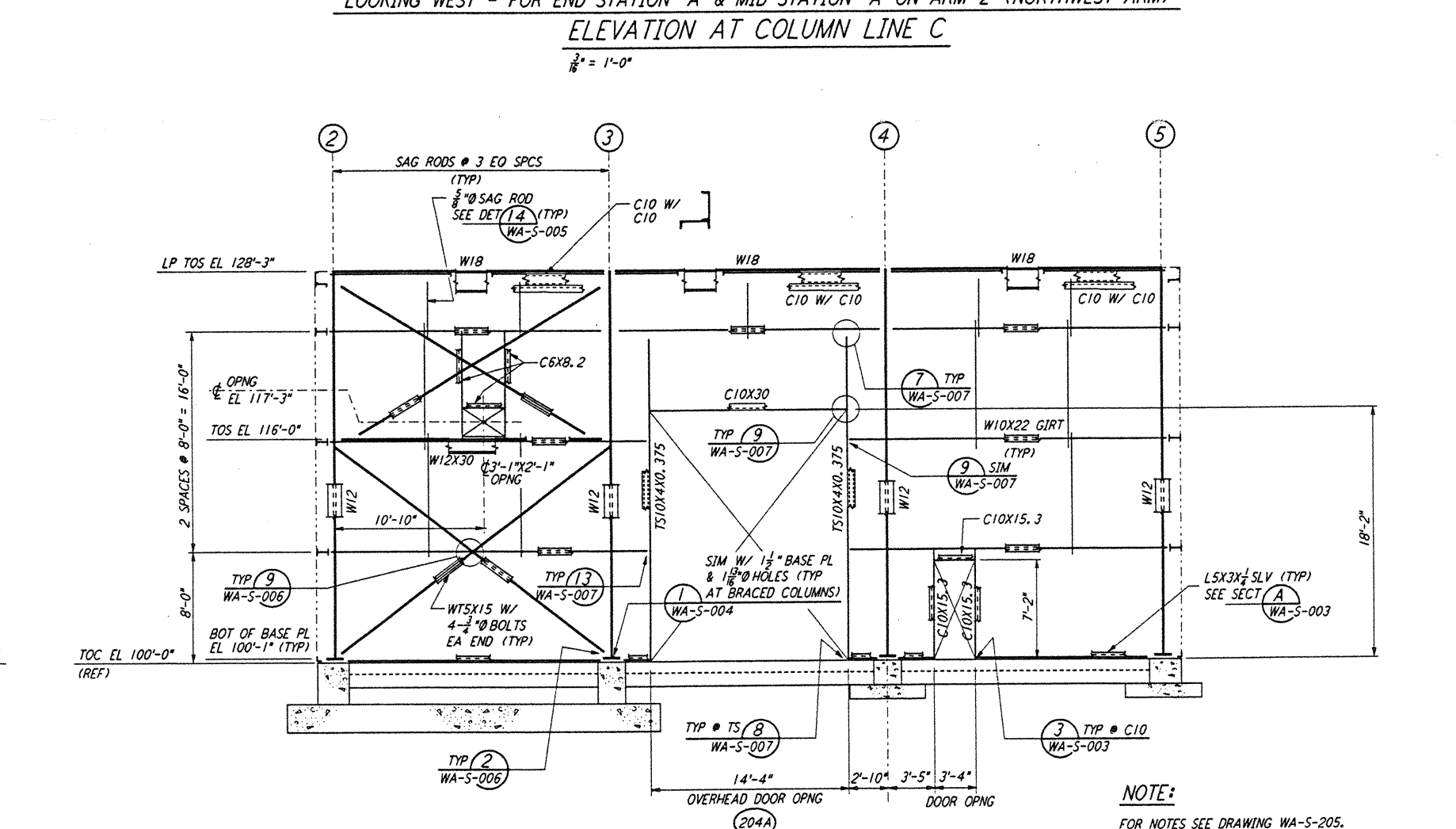
LOOKING NORTH - FOR END STATION "B" & MID STATION "B" ON ARM 1 (SOUTHWEST ARM)
 LOOKING EAST - FOR END STATION "A" & MID STATION "A" ON ARM 2 (NORTHWEST ARM)
 ELEVATION AT COLUMN LINE A
 $\frac{3}{8}'' = 1'-0''$



LOOKING SOUTH - FOR END STATION "B" & MID STATION "B" ON ARM 1 (SOUTHWEST ARM)
 LOOKING WEST - FOR END STATION "A" & MID STATION "A" ON ARM 2 (NORTHWEST ARM)
 ELEVATION AT COLUMN LINE C
 $\frac{3}{8}'' = 1'-0''$

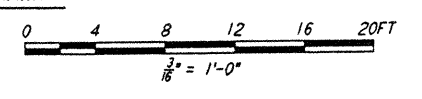


LOOKING SOUTH - FOR END STATION "B" & MID STATION "B" ON ARM 1 (SOUTHWEST ARM)
 LOOKING WEST - FOR END STATION "A" & MID STATION "A" ON ARM 2 (NORTHWEST ARM)
 ELEVATION AT COLUMN LINE B
 $\frac{3}{8}'' = 1'-0''$



LOOKING SOUTH - FOR END STATION "B" & MID STATION "B" ON ARM 1 (SOUTHWEST ARM)
 LOOKING WEST - FOR END STATION "A" & MID STATION "A" ON ARM 2 (NORTHWEST ARM)
 ELEVATION AT COLUMN LINE D
 $\frac{3}{8}'' = 1'-0''$

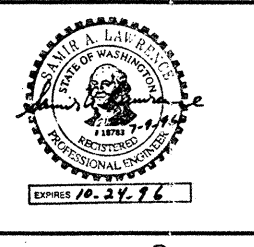
NOTE:
 FOR NOTES SEE DRAWING WA-S-205.



This document and the design it covers are the property of PARSONS. They are loaned only with the borrower's expressed written agreement that they will not be reproduced, copied, loaned, exhibited, or used in any other way, except by written consent from PARSONS to the borrower.

| NO. | DATE | BY | CHKD | ENGR | PROJ | DESCRIPTION |
|-----|------|----|------|------|------|-------------|
| | | | | | | |
| | | | | | | |
| | | | | | | |

| | |
|-------------------------|-------------|
| ISSUED FOR CONSTRUCTION | DATE |
| DRAWN | MCS 6-24-96 |
| CHECKED | Bmm 7-2-96 |
| ENGINEER | BC 6-29-96 |
| PROJ | WJW 7/19/96 |



PARSONS
 100 WEST WALNUT STREET
 PASADENA, CALIFORNIA

LIGO
 CALIFORNIA INSTITUTE OF TECHNOLOGY
 MASSACHUSETTS INSTITUTE OF TECHNOLOGY

LASER INTERFEROMETER
 GRAVITATIONAL-WAVE OBSERVATORY
 SITE NO. 1 - HANFORD, WASHINGTON

TITLE: STRUCTURAL MID & END STATIONS FRAMING ELEVATIONS SHEET 2

SCALE: AS NOTED
 CONTRACT NUMBER: PP150969
 PROJECT NUMBER: 8094

SHEET NUMBER: **WA-S-206**