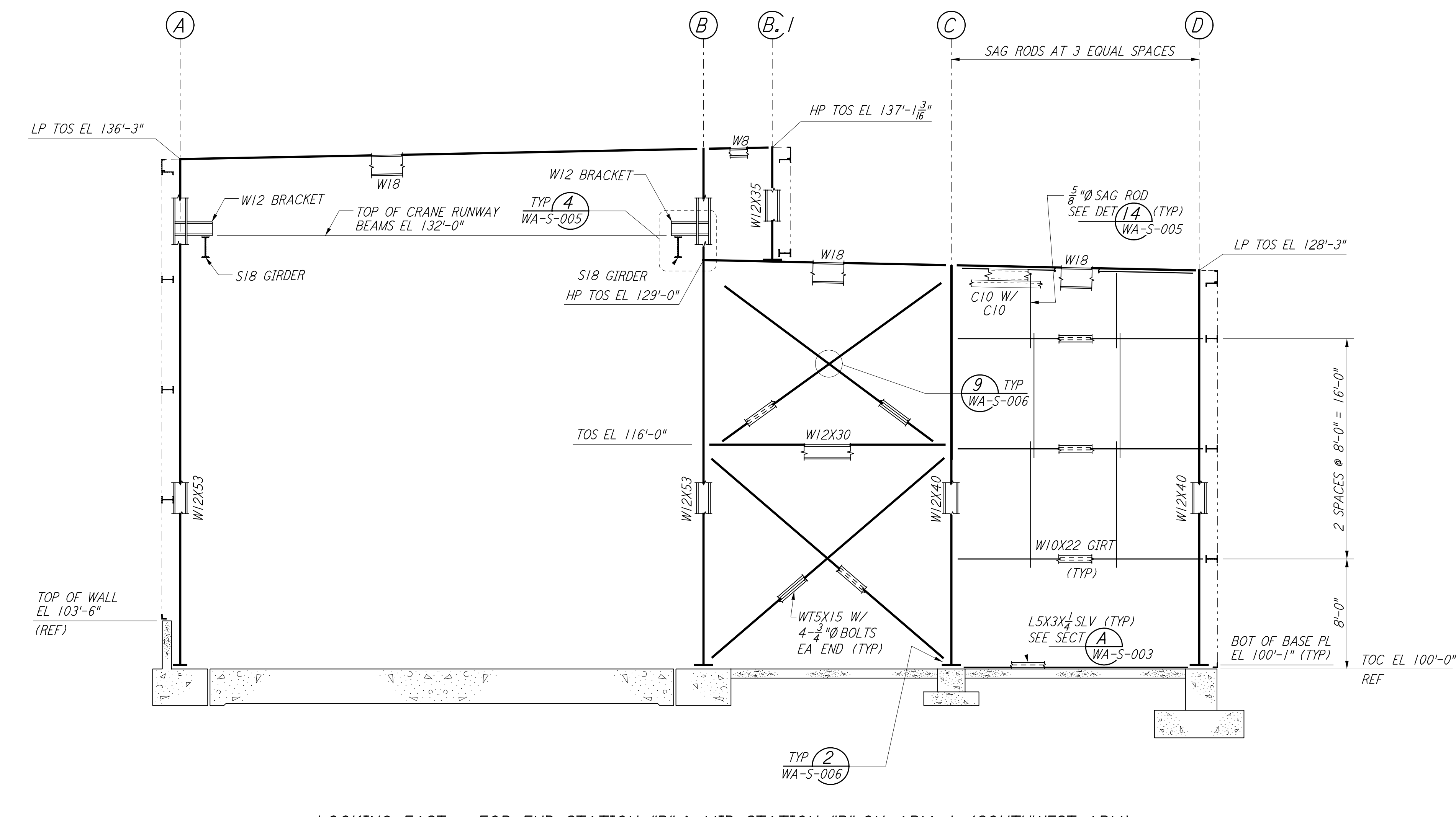
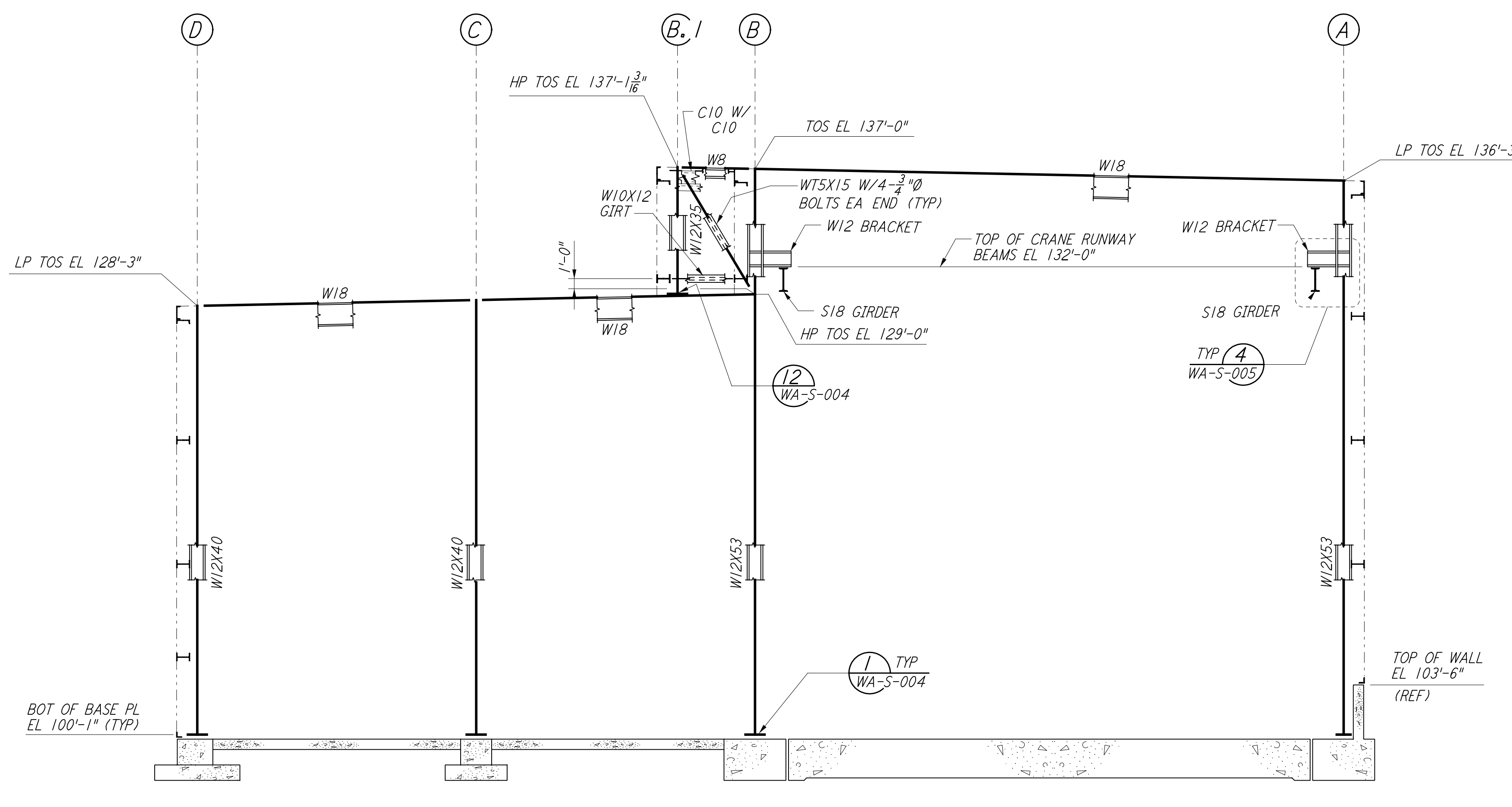


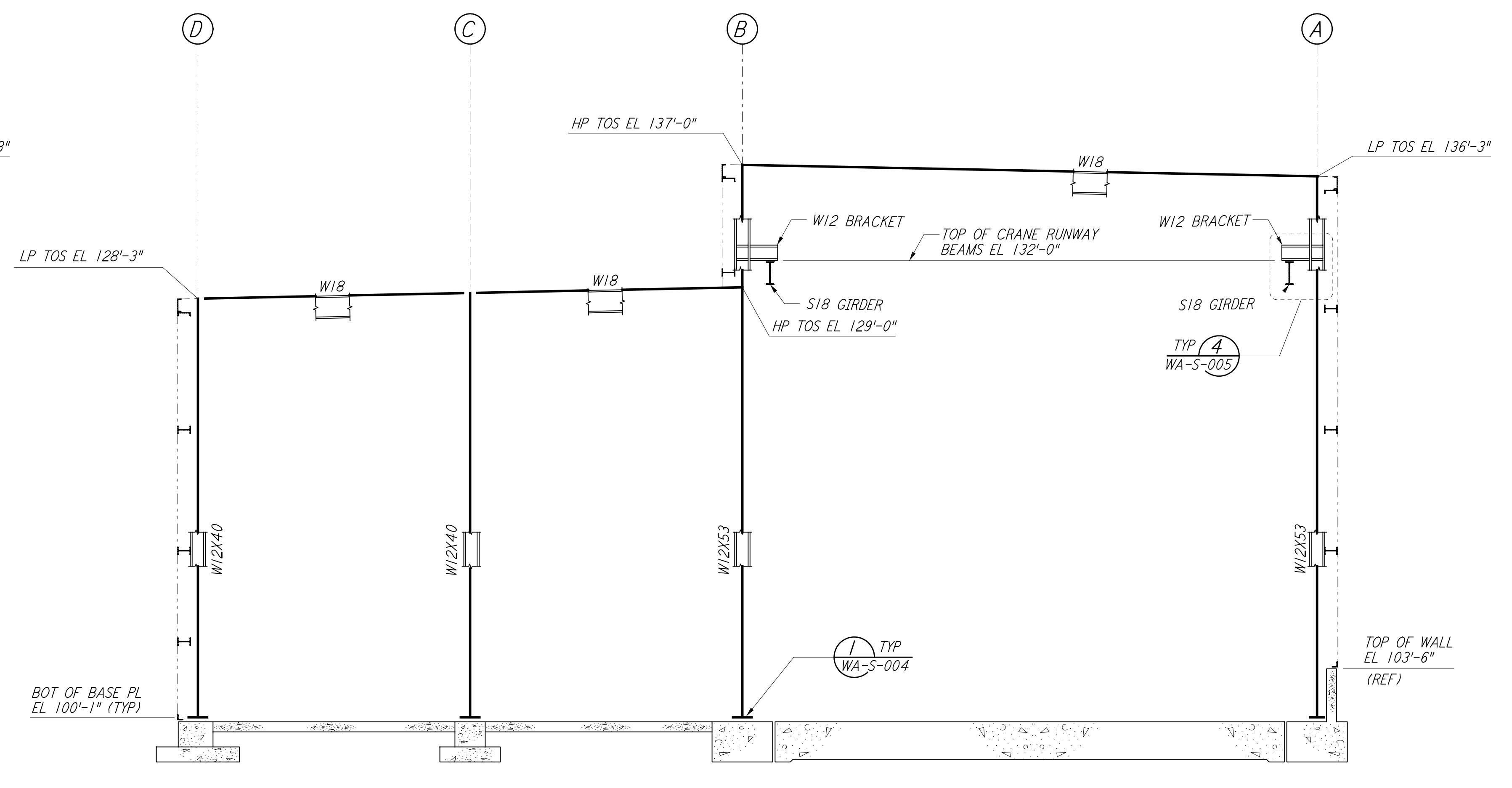
LOOKING EAST - FOR END STATION "B" & MID STATION "B" ON ARM 1 (SOUTHWEST ARM)
 LOOKING NORTH - FOR END STATION "A" & MID STATION "A" ON ARM 2 (NORTHWEST ARM)
 ELEVATION AT COLUMN LINE 1
 $\frac{3}{16}'' = 1'-0''$



LOOKING EAST - FOR END STATION "B" & MID STATION "B" ON ARM 1 (SOUTHWEST ARM)
 LOOKING NORTH - FOR END STATION "A" & MID STATION "A" ON ARM 2 (NORTHWEST ARM)
 ELEVATION AT COLUMN LINE 2
 $\frac{3}{16}'' = 1'-0''$

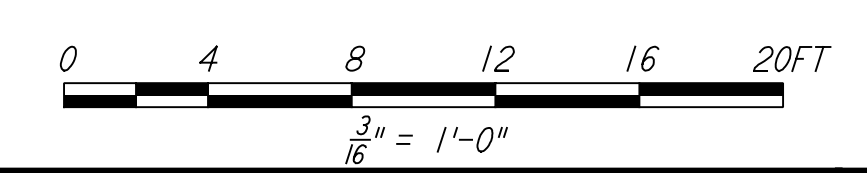


LOOKING WEST - FOR END STATION "B" & MID STATION "B" ON ARM 1 (SOUTHWEST ARM)
 LOOKING SOUTH - FOR END STATION "A" & MID STATION "A" ON ARM 2 (NORTHWEST ARM)
 ELEVATION AT COLUMN LINE 3
 $\frac{3}{16}'' = 1'-0''$



LOOKING WEST - FOR END STATION "B" & MID STATION "B" ON ARM 1 (SOUTHWEST ARM)
 LOOKING SOUTH - FOR END STATION "A" & MID STATION "A" ON ARM 2 (NORTHWEST ARM)
 ELEVATION AT COLUMN LINE 4
 $\frac{3}{16}'' = 1'-0''$

NOTES:
 1. FOR NOTES SEE DRAWING WA-S-108.
 2. FOR VERTICAL BRACING CONNECTIONS, SEE DETAIL (5) WA-S-006



REV	NO.	DATE	BY	CHKD	ENGR	PROJ	DESCRIPTION
1	6-15-98	CKT					ISSUED FOR AS-BUILT

ISSUED FOR CONSTRUCTION			
DRAWN	MCS	6-24-96	
CHECKED	DDM	7-2-96	
ENGINEER	BP	6-28-96	
PROJ	MDW	7-9-96	

AS-BUILT DRAWINGS

100 WEST WALNUT STREET
PASADENA, CALIFORNIA

CALIFORNIA INSTITUTE OF TECHNOLOGY
MASSACHUSETTS INSTITUTE OF TECHNOLOGY

LIGO-D960311-01-0

LASER INTERFEROMETER
GRAVITATIONAL-WAVE OBSERVATORY
SITE NO. 1 - HANFORD, WASHINGTON

TITLE	STRUCTURAL MID & END STATIONS FRAMING ELEVATIONS SHEET 1	SCALE	AS NOTED	DESIGN NUMBER	PP150969	PROJECT NUMBER	8094
SHEET NUMBER	WA-S-205	REVISIONS					

This document and the design it covers are the property of PARSONS. They are loaned only with the borrower's expressed written agreement that they will not be reproduced, copied, loaned, exhibited, or used in any other way, except by written consent from PARSONS to the borrower.

This document and the design it covers are the property of PARSONS. They are loaned only with the borrower's expressed written agreement that they will not be reproduced, copied, loaned, exhibited, or used in any other way, except by written consent from PARSONS to the borrower.

The user of this drawing is advised that the design is preliminary and subject to change without notice.