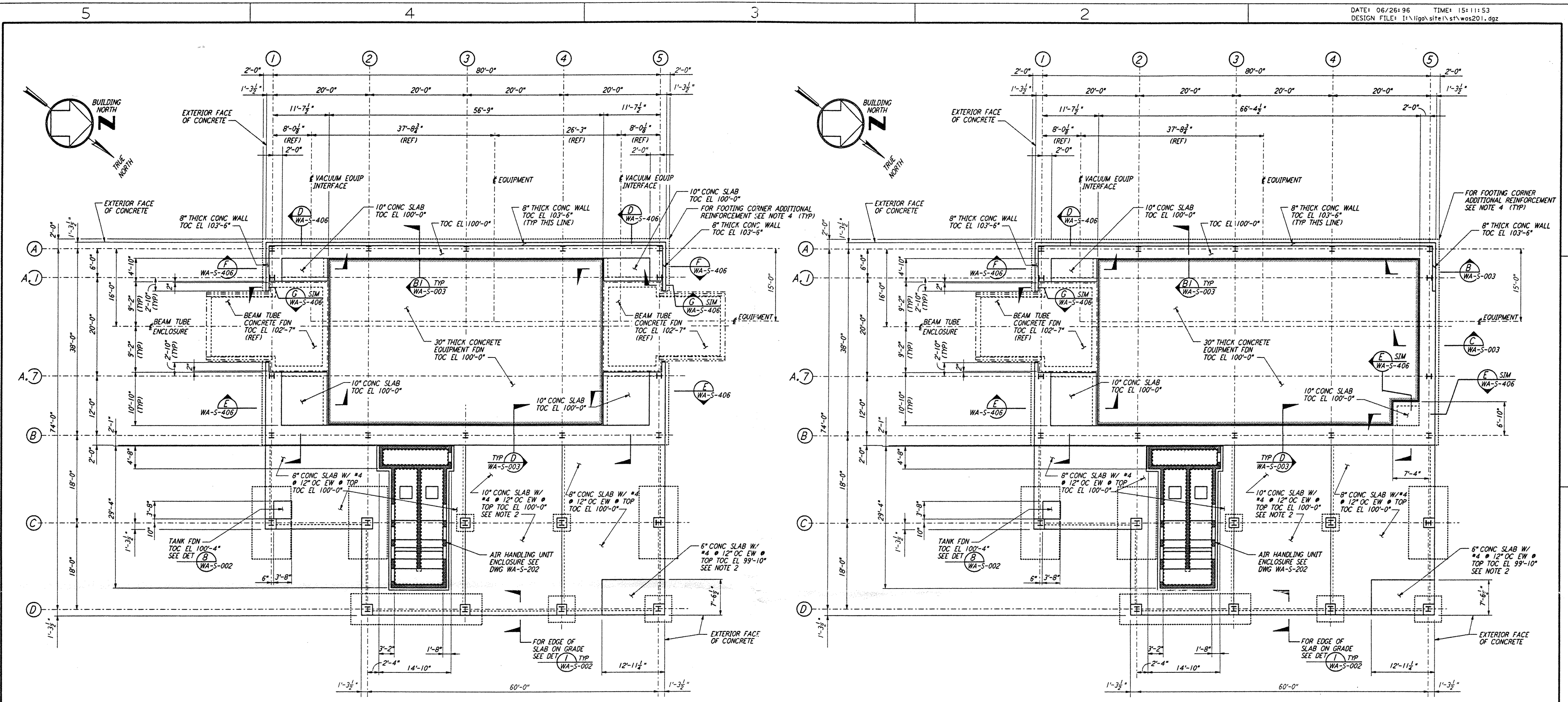


This document and the design it covers are the property of PARSONS. They are loaned only with the borrower's expressed written agreement that they will not be reproduced, copied, loaned, exhibited, or used in any other way, except by written consent from PARSONS to the borrower.



ARM 2 (NORTHWEST ARM)
 MID STATION "A" FOUNDATION PLAN
 1/4" = 1'-0"
 DATUM POINT EL 100'-0" = EL 528.07'

FOR FLOOR SLOPES SEE ARCHITECTURAL DWGS.

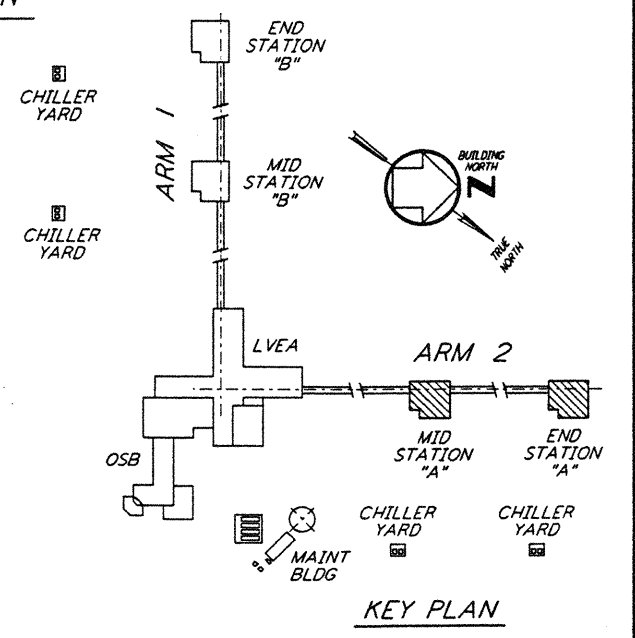
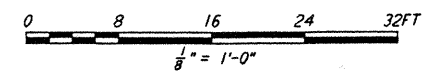
ARM 2 (NORTHWEST ARM)
 END STATION "A" FOUNDATION PLAN
 1/4" = 1'-0"
 DATUM POINT EL 100'-0" = EL 527.05'

EQUIPMENT FOUNDATION NOTES:

1. CONCRETE FOR EQUIPMENT FOUNDATION SHALL BE PLACED IN MULTIPLE LIFTS OF ONE (1) FOOT OR MORE WITH A FINAL LIFT OF SIX (6) INCHES.
2. FIBERMESH FIBERS (MANUFACTURED BY FIBERMESH, CHATTANOOGA, TENNESSEE OR EQUAL) SHALL BE MIXED WITH CONCRETE FOR THE FINAL LIFT OF SIX (6) INCHES FOR THE EQUIPMENT FOUNDATION.
3. CONCRETE SURFACE SHALL BE CLEANED, RAKED AND ROUGHENED TO DEVELOPE BOND BETWEEN CONCRETE LAYERS.
4. TOP REINFORCEMENT OF EQUIPMENT FOUNDATION SHALL HAVE 1 1/2" CLEAR COVER. CONTRACTOR SHALL TAKE ALL THE NECESSARY PRECAUTIONS TO MAINTAIN UNIFORM COVER.
5. CONTRACTOR SHALL HAVE SPARE PUMPS TO ENSURE UNINTERRUPTED PLACEMENT OF CONCRETE.
6. EQUIPMENT FOUNDATION SHALL BE CURED BY MEMBRANE CURING METHOD AS PER SPECIFICATIONS.

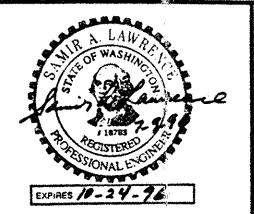
NOTES:

1. FOR MID AND END STATION FOUNDATION PLANS ON THE SOUTHWEST ARM, SEE DRAWING WA-S-208.
2. FOR FLOOR DRAIN LOCATIONS AND FLOOR SLOPE SEE ARCHITECTURAL DRAWINGS.
3. FOR FOUNDATION SCHEDULE AND DETAILS, SEE DRAWING WA-S-401.
4. FOR ADDITIONAL REINFORCEMENT AT 90° FOUNDATION DIRECTION CHANGES IN STRIP FOOTING, SEE DETAIL 4 SIM WA-S-003



NO.	DATE	BY	CHKD	ENGR	PROJ	DESCRIPTION

ISSUED FOR CONSTRUCTION	
DRAWN	MCS 6-24-96
CHECKED	7-2-96
ENGINEER	6-23-96
PROJ	7/9/96



PARSONS
 100 WEST WALNUT STREET
 PASADENA, CALIFORNIA

LIGO
 CALIFORNIA INSTITUTE OF TECHNOLOGY
 MASSACHUSETTS INSTITUTE OF TECHNOLOGY

LASER INTERFEROMETER
 GRAVITATIONAL-WAVE OBSERVATORY
 SITE NO. 1 - HANFORD, WASHINGTON

STRUCTURAL
 MID STATION "A" &
 END STATION "A"
 FOUNDATION PLANS

AS NOTED PPI 50969 8094
WA-S-201