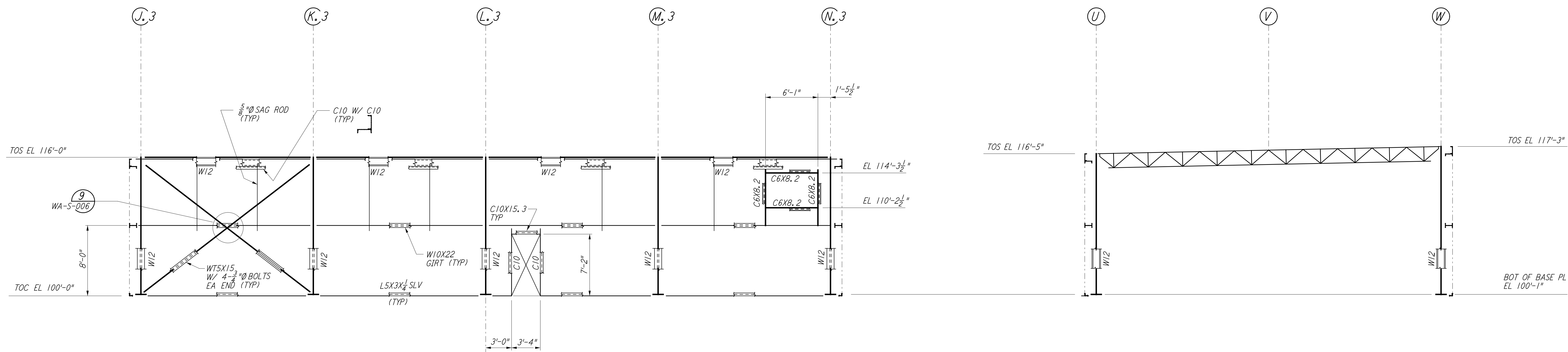
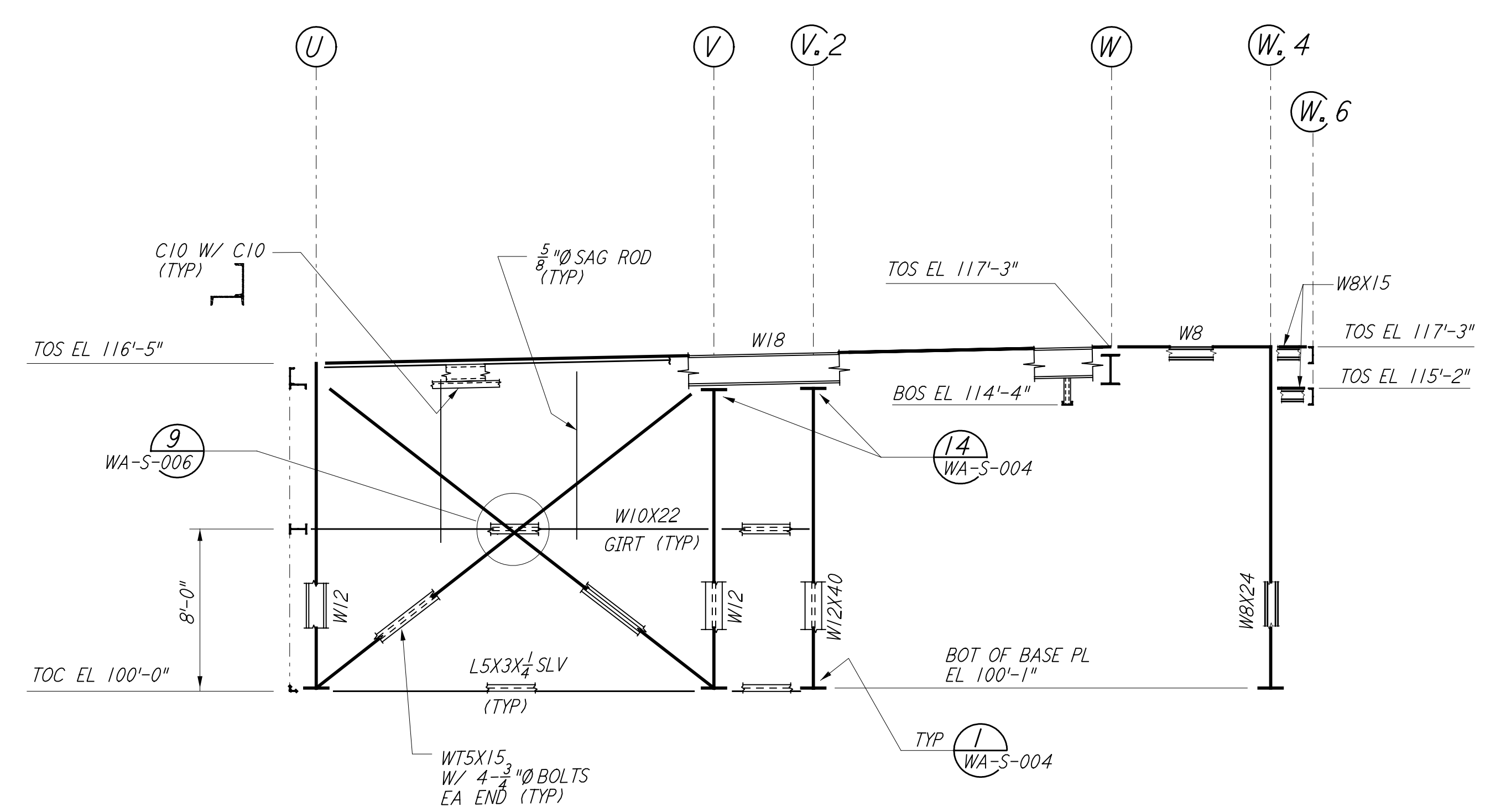


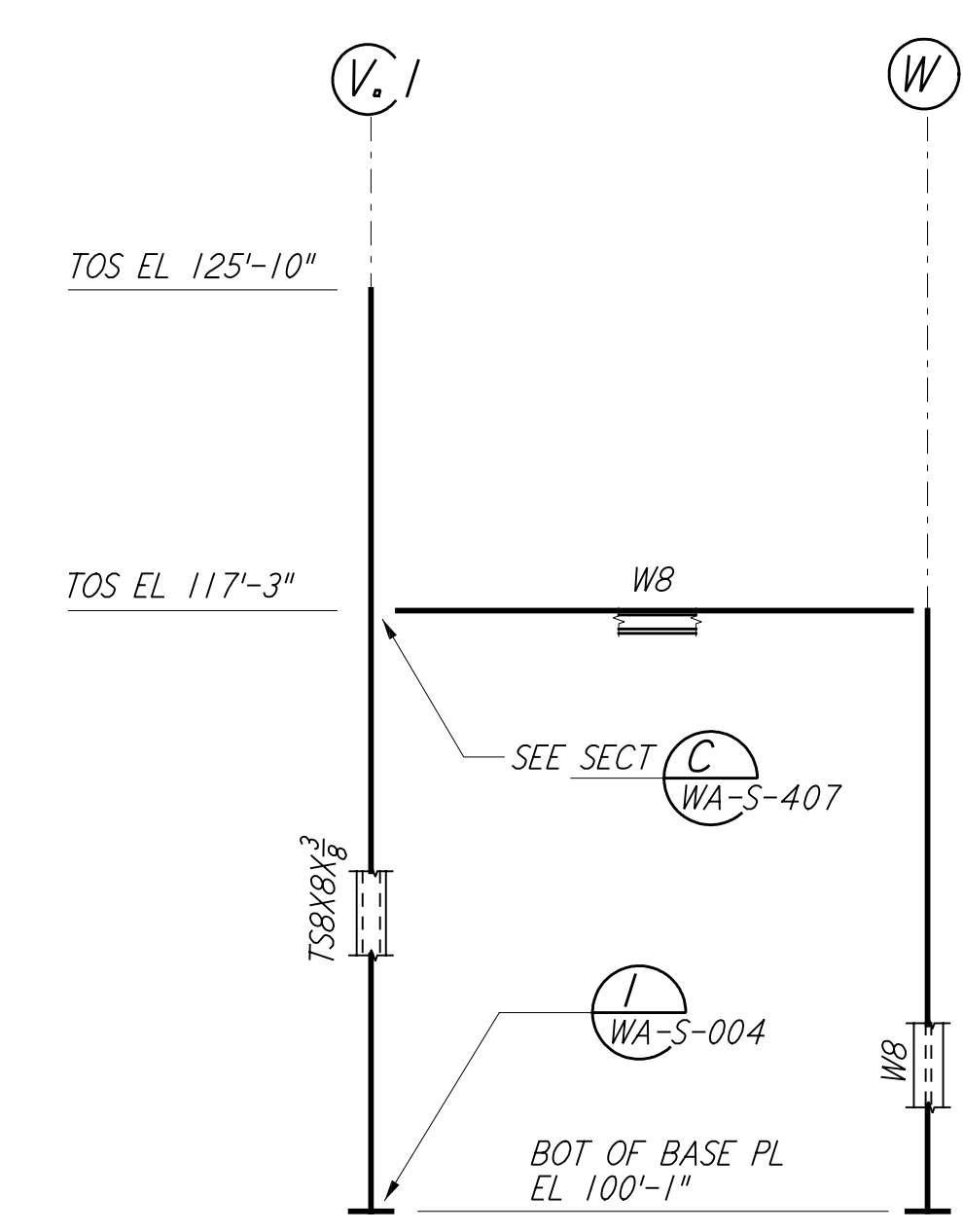
This document and the design it covers are the property of PARSONS. They are loaned only with the borrower's expressed written agreement that they will not be reproduced, copied, loaned, exhibited, or used in any other way, except by written consent from PARSONS to the borrower.



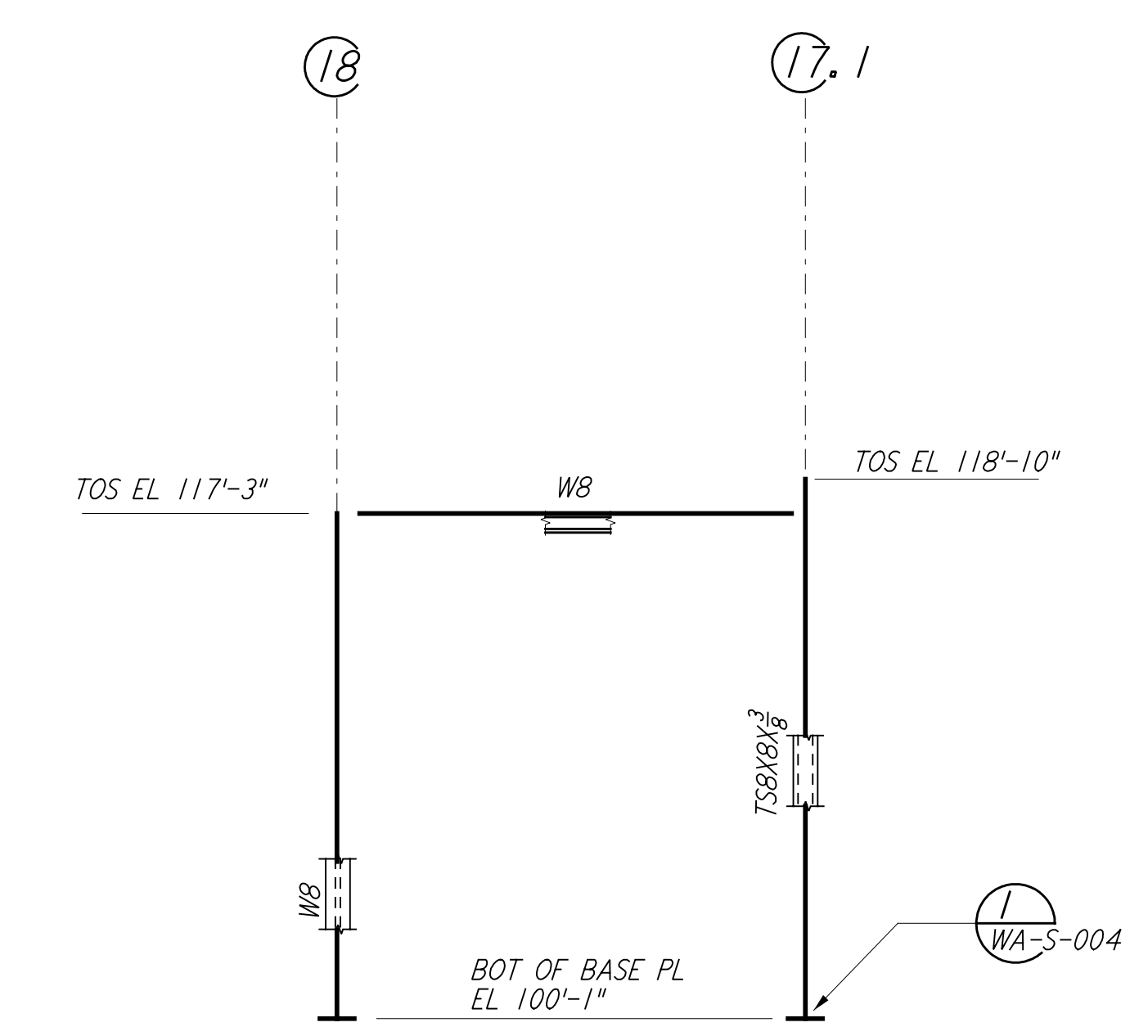
FRAMING ELEVATION AT COLUMN LINE 17
 $\frac{3}{16}'' = 1'-0''$



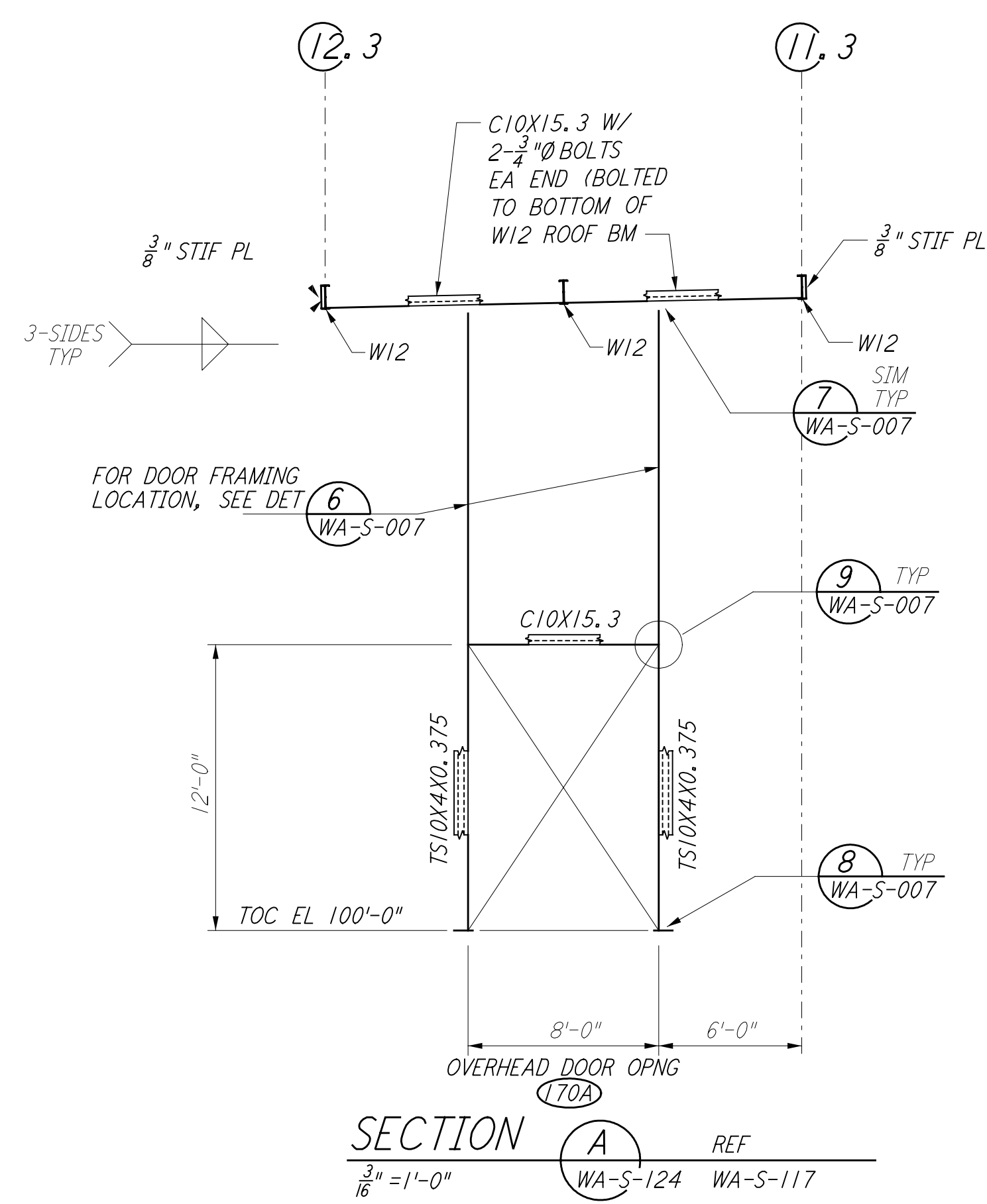
FRAMING ELEVATION AT COLUMN LINE 18
 $\frac{3}{16}'' = 1'-0''$



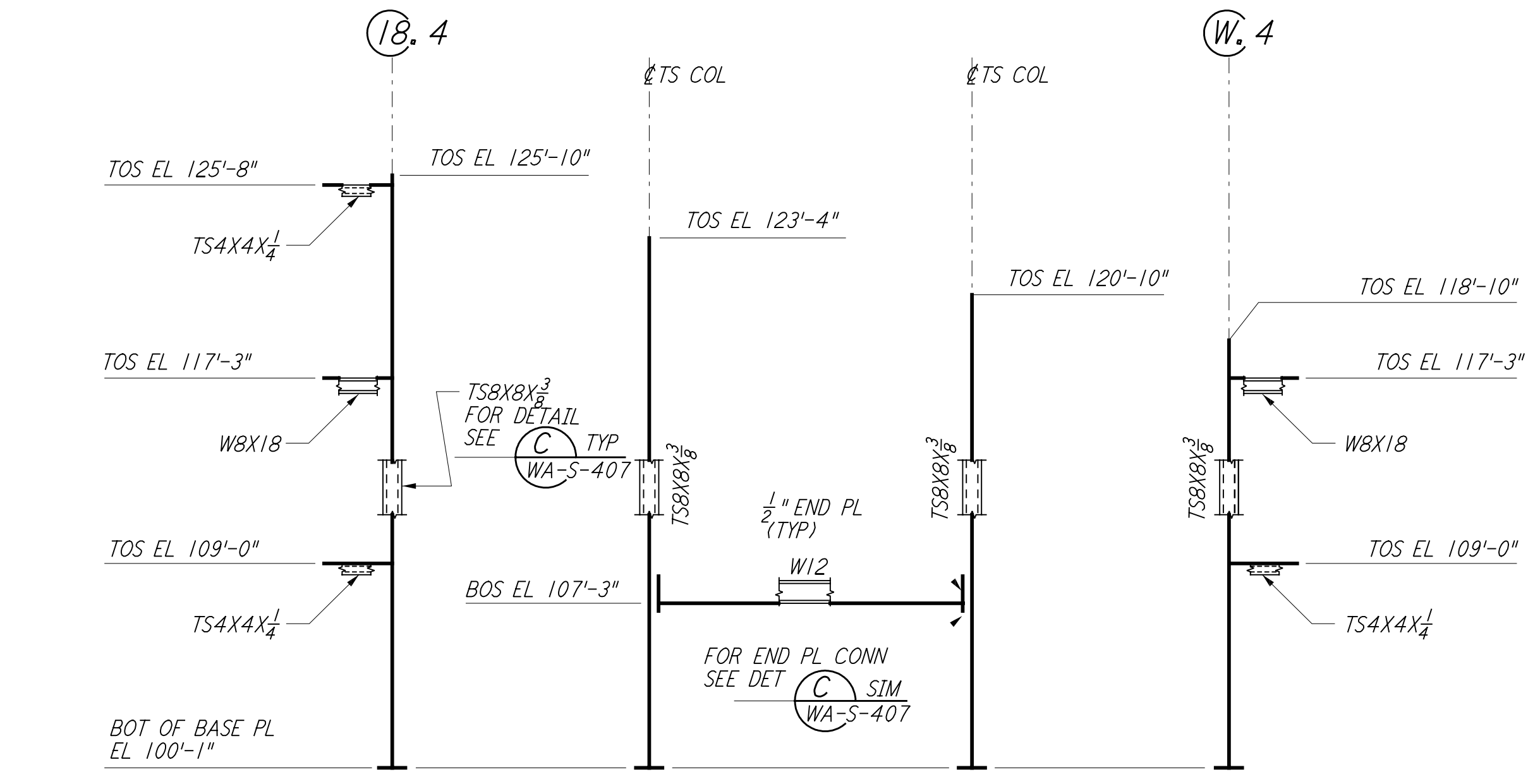
FRAMING ELEVATION AT COLUMN LINE 18.4
 $\frac{3}{16}'' = 1'-0''$



FRAMING ELEVATION AT COLUMN LINE W.4
 $\frac{3}{16}'' = 1'-0''$

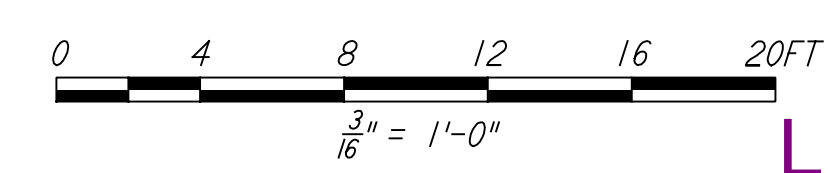


SECTION A REF
 $\frac{3}{16}'' = 1'-0''$ WA-S-124 WA-S-117



DEVELOPED FRAMING ELEVATION
 $\frac{3}{16}'' = 1'-0''$ REF WA-S-124 WA-S-117

- NOTES:**
- FOR GENERAL NOTES, ABBREVIATIONS AND SYMBOLS SEE DRAWING WA-S-001.
 - FOR CHANNEL, GIRT AND EAVE STRUT CONNECTION DETAILS SEE DRAWING WA-S-005.
 - FOR W BEAM TO COLUMN WEB/FLANGE CONNECTIONS, SEE DETAILS (6) WA-S-004 & (4) WA-S-007 UNLESS OTHERWISE NOTED.
 - FOR BASE ANGLE (LSX) CONNECTIONS, SEE SECTION (A) WA-S-003.
 - FOR VERT BRGC CONNECTIONS SEE (2) WA-S-006 (8) WA-S-006 (1) WA-S-007 (2) WA-S-007 TYP UON.



LIGO-D960304-01-O

NO.	DATE	BY	CHKD	ENGR	PROJ	DESCRIPTION
1	6-15-98	CKT				ISSUED FOR AS-BUILT

ISSUED FOR CONSTRUCTION		
DRAWN	MCS	6-24-96
CHECKED	DDM	7-2-96
ENGINEER	BP	6-18-96
PROJ	MDW	7-9-96

AS-BUILT DRAWINGS



LASER INTERFEROMETER
GRAVITATIONAL-WAVE OBSERVATORY
SITE NO. 1 - HANFORD, WASHINGTON

TITLE	STRUCTURAL CORNER STATION OSB FRAMING ELEVATIONS SHEET 7	SCALE	AS NOTED	PROJECT NUMBER	PP150969 8094
SHEET NUMBER	WA-S-124	REVISIONS			