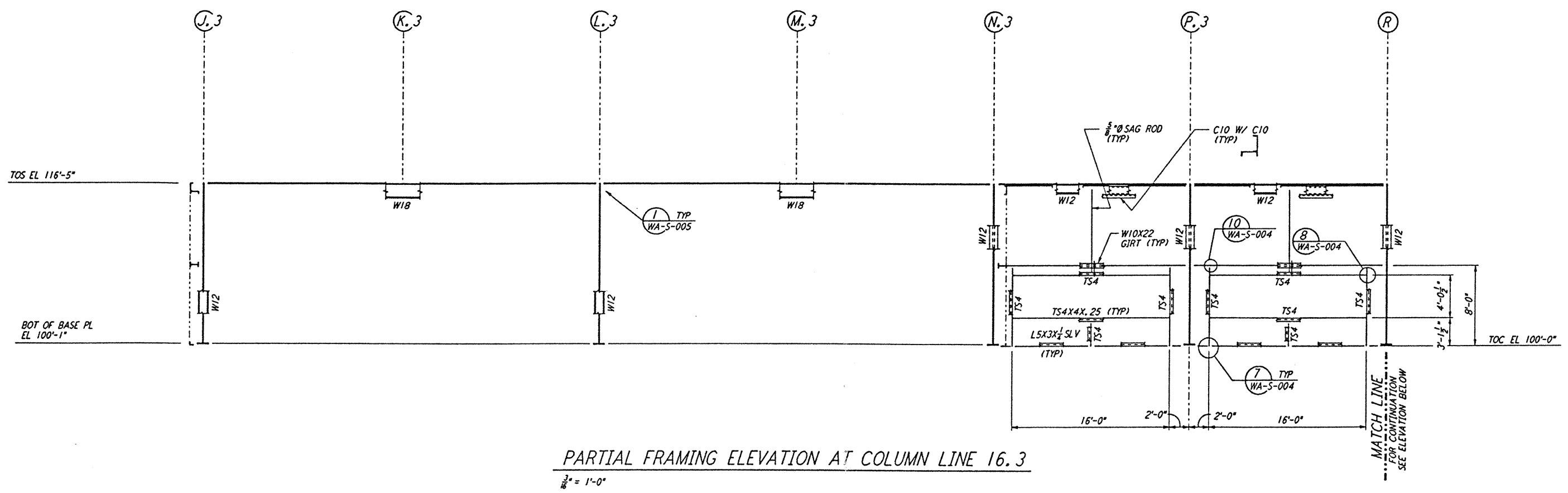
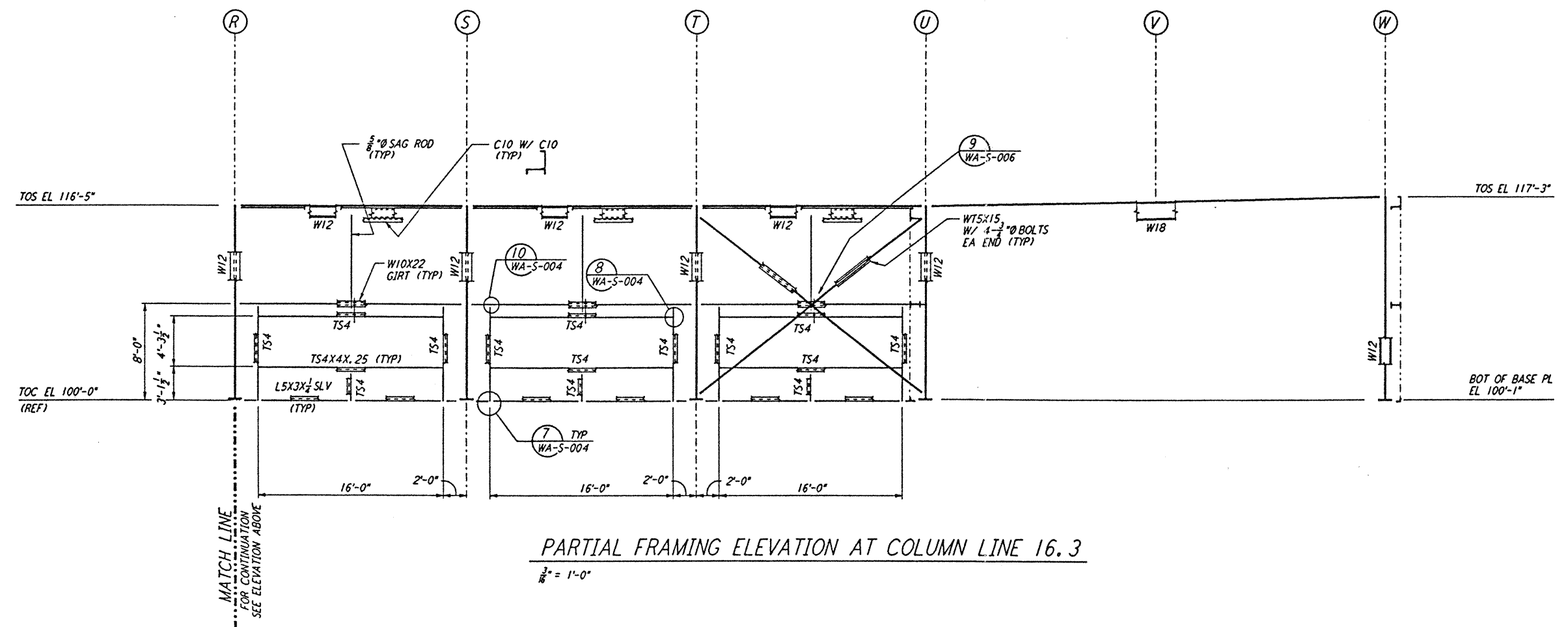


not be reproduced, copied, loaned, exhibited, or used in any other way, except by written consent from PARSONS to the borrower.

This document and the design it covers are the property of PARSONS. They are loaned only with the borrower's expressed written agreement that they will



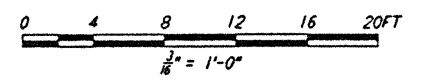
PARTIAL FRAMING ELEVATION AT COLUMN LINE 16.3  
1/8" = 1'-0"



PARTIAL FRAMING ELEVATION AT COLUMN LINE 16.3  
1/8" = 1'-0"

NOTES:

- FOR GENERAL NOTES, ABBREVIATIONS AND SYMBOLS SEE DRAWING WA-S-001.
- FOR CHANNEL, GIRT AND EAVE STRUT CONNECTION DETAILS SEE DRAWING WA-S-005.
- FOR W BEAM TO COLUMN WEB/FLANGE CONNECTIONS, SEE DETAILS (B) WA-S-004 & (C) WA-S-007 TYPICAL UNLESS OTHERWISE NOTED.
- FOR BASE ANGLE (LSK) CONNECTIONS, SEE SECTION (A) WA-S-003
- FOR VERT BRCC CONNECTIONS SEE (2) WA-S-006 (8) WA-S-006 (1) WA-S-007 (2) WA-S-007 TYP UON.



NO.	DATE	BY	CHKD	ENGR	PROJ	DESCRIPTION
B	4-19-96	MCS	dbw	PK		FINAL DESIGN REVIEW & BID
A	10-31-95					PRELIMINARY DESIGN REVIEW

DRAWN	MCS
CHECKED	
ENGINEER	
PROJ	

**PARSONS**  
100 WEST WALNUT STREET  
PASADENA, CALIFORNIA

**LIGO**  
CALIFORNIA INSTITUTE OF TECHNOLOGY  
MASSACHUSETTS INSTITUTE OF TECHNOLOGY

LASER INTERFEROMETER  
GRAVITATIONAL-WAVE OBSERVATORY  
SITE NO. 1 - HANFORD, WASHINGTON

STRUCTURAL  
CORNER STATION  
OSB FRAMING ELEVATIONS  
SHEET 6

AS NOTED PP150969 8094  
**WA-S-123**

LIGO-D960303-B-01