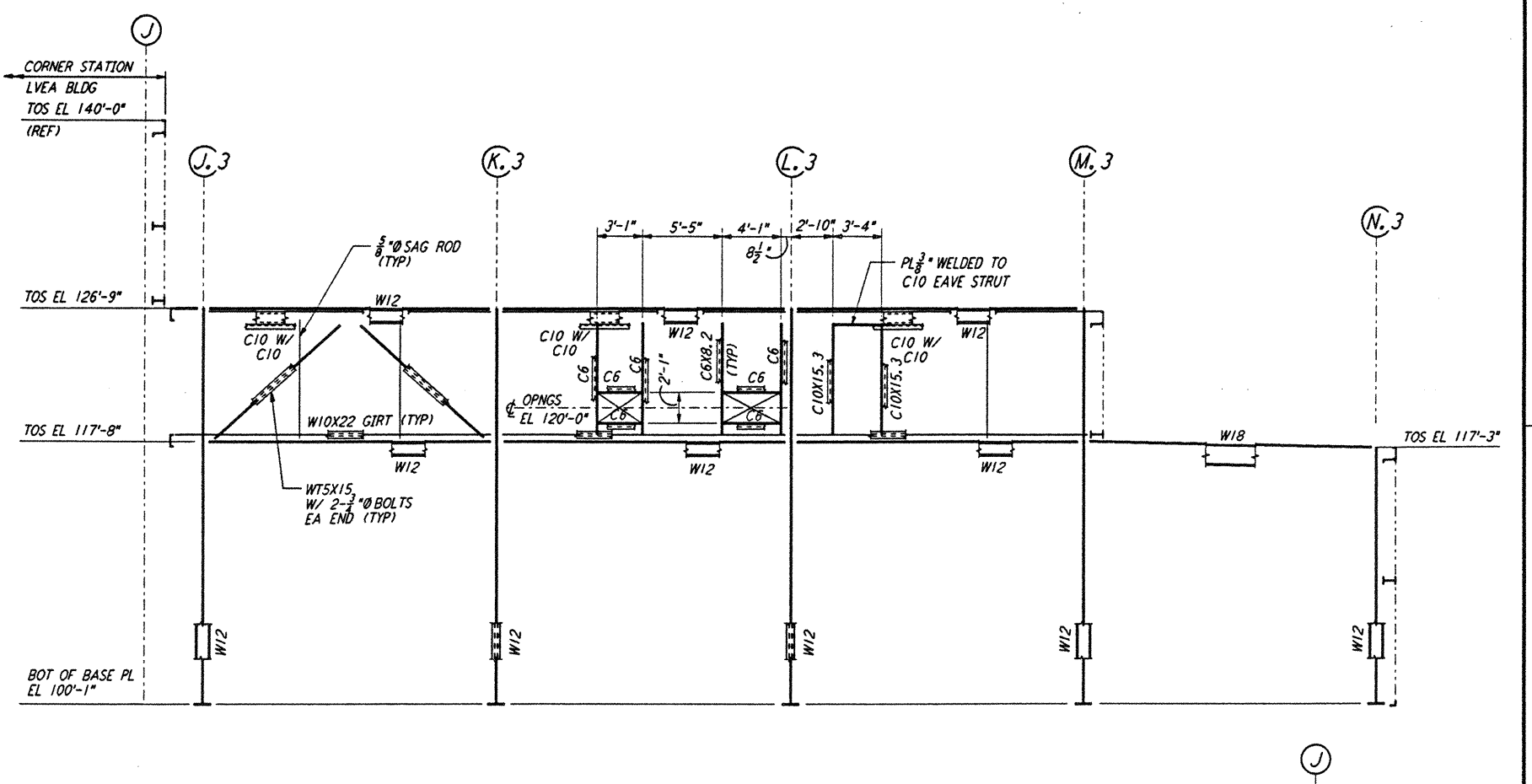
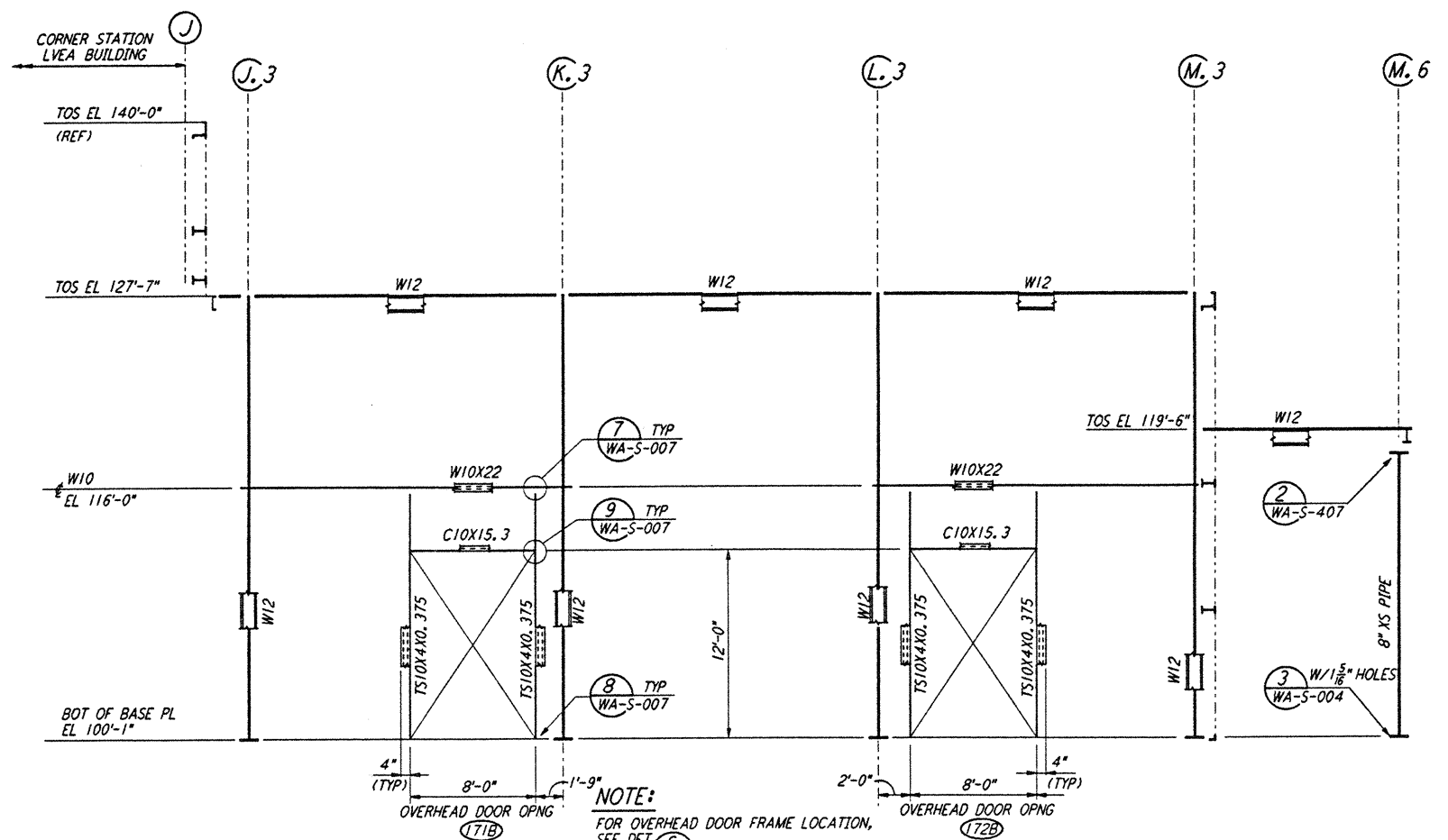


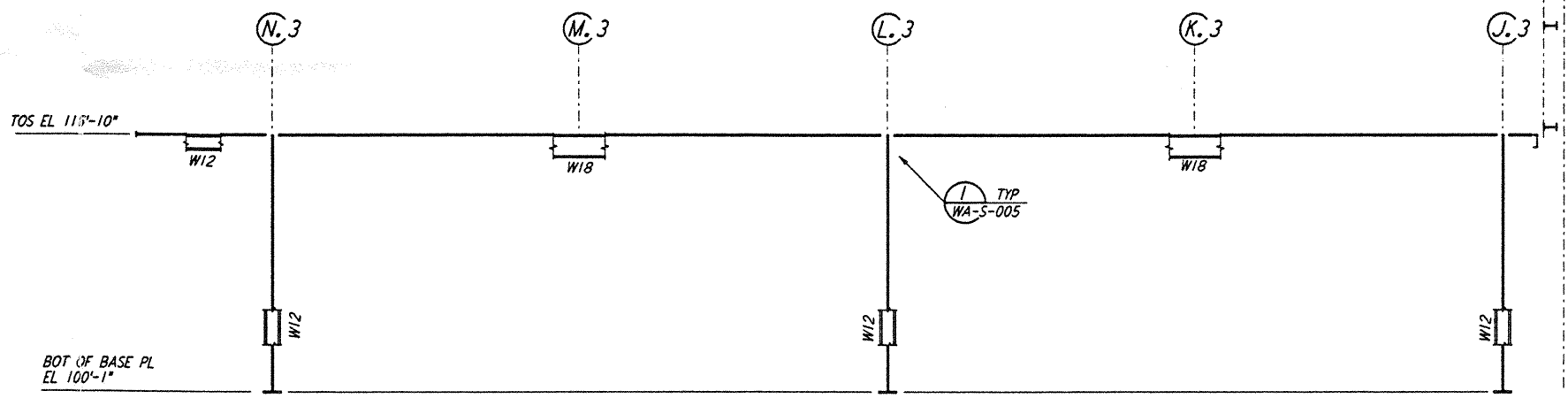
FRAMING ELEVATION AT COLUMN LINE 12.3  
 $\frac{1}{8}'' = 1'-0''$



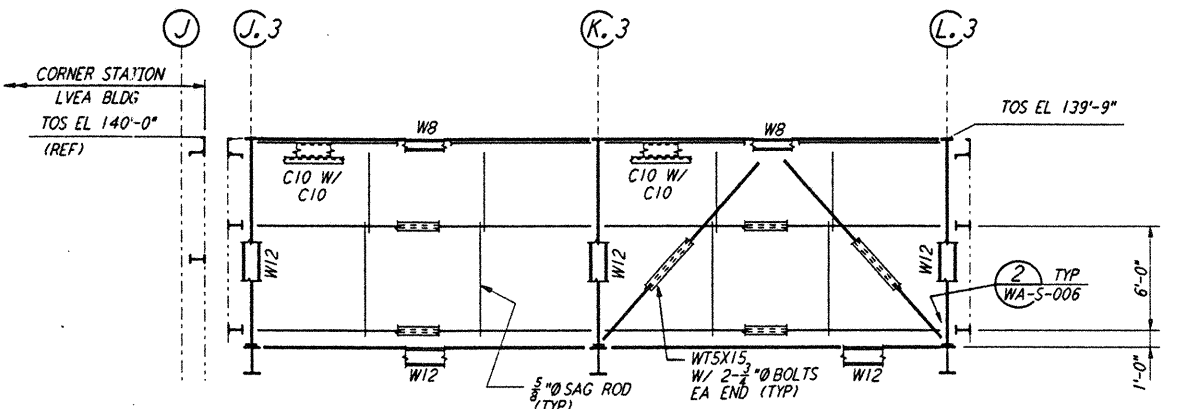
FRAMING ELEVATION AT COLUMN LINE 13.3  
 $\frac{1}{8}'' = 1'-0''$



FRAMING ELEVATION AT COLUMN LINE 11.3  
 $\frac{1}{8}'' = 1'-0''$

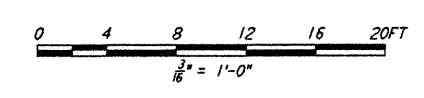


FRAMING ELEVATION AT COLUMN LINE 15.3  
 $\frac{1}{8}'' = 1'-0''$



FRAMING ELEVATION AT COLUMN LINE 10.6  
 $\frac{1}{8}'' = 1'-0''$

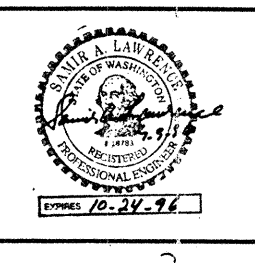
- NOTES:
1. FOR GENERAL NOTES, ABBREVIATIONS AND SYMBOLS SEE DRAWING WA-S-001.
  2. FOR CHANNEL, GIRT AND EAVE STRUT CONNECTION DETAILS SEE DRAWING WA-S-005.
  3. FOR W BEAM TO COLUMN WEB/FLANGE CONNECTIONS, SEE DETAILS (6) WA-S-004 & (4) WA-S-007 TYPICAL UNLESS OTHERWISE NOTED.
  4. FOR BASE ANGLE (LSX) CONNECTIONS, SEE SECTION (A) WA-S-003.
  5. FOR VERT BRGC CONNECTIONS SEE (2) WA-S-006, (8) WA-S-006, (1) WA-S-007, (2) WA-S-007 TYP UNON.



This document and the design it covers are the property of PARSONS. They are loaned only with the borrower's expressed written agreement that they will not be reproduced, copied, loaned, exhibited, or used in any other way, except by written consent from PARSONS to the borrower.

REFERENCES	REVISIONS	ISSUED FOR CONSTRUCTION						
		DRAWN MCS 6-24-96						
		CHECKED BBL 7-2-96						
		ENGINEER PS 6-28-96						
		PROJ WNW 7/19/96						
DRAWING NO.	DESCRIPTION	NO.	DATE	BY	CHKD	ENGR	PROJ	DESCRIPTION

ISSUED FOR CONSTRUCTION
DRAWN MCS 6-24-96
CHECKED BBL 7-2-96
ENGINEER PS 6-28-96
PROJ WNW 7/19/96



**PARSONS**  
 100 WEST WALNUT STREET  
 PASADENA, CALIFORNIA

**LIGO**  
 CALIFORNIA INSTITUTE OF TECHNOLOGY  
 MASSACHUSETTS INSTITUTE OF TECHNOLOGY

LASER INTERFEROMETER  
 GRAVITATIONAL-WAVE OBSERVATORY  
 SITE NO. 1 - HANFORD, WASHINGTON

TITLE	STRUCTURAL CORNER STATION OSB FRAMING ELEVATIONS SHEET 4	SCALE	AS NOTED	CONTRACT NUMBER	PP150969	PROJECT NUMBER	8094
SHEET NUMBER	WA-S-121	REVISIONS					