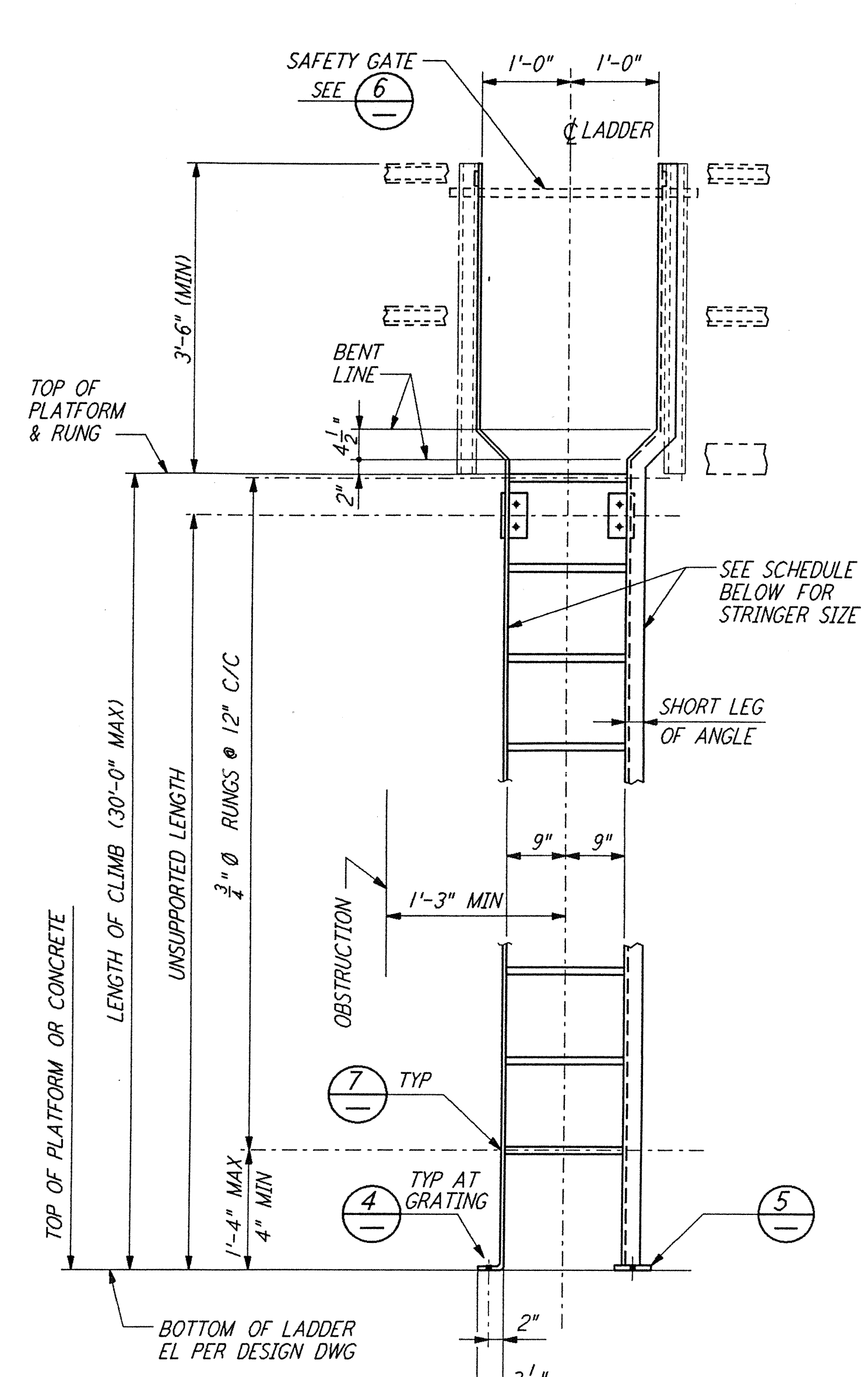
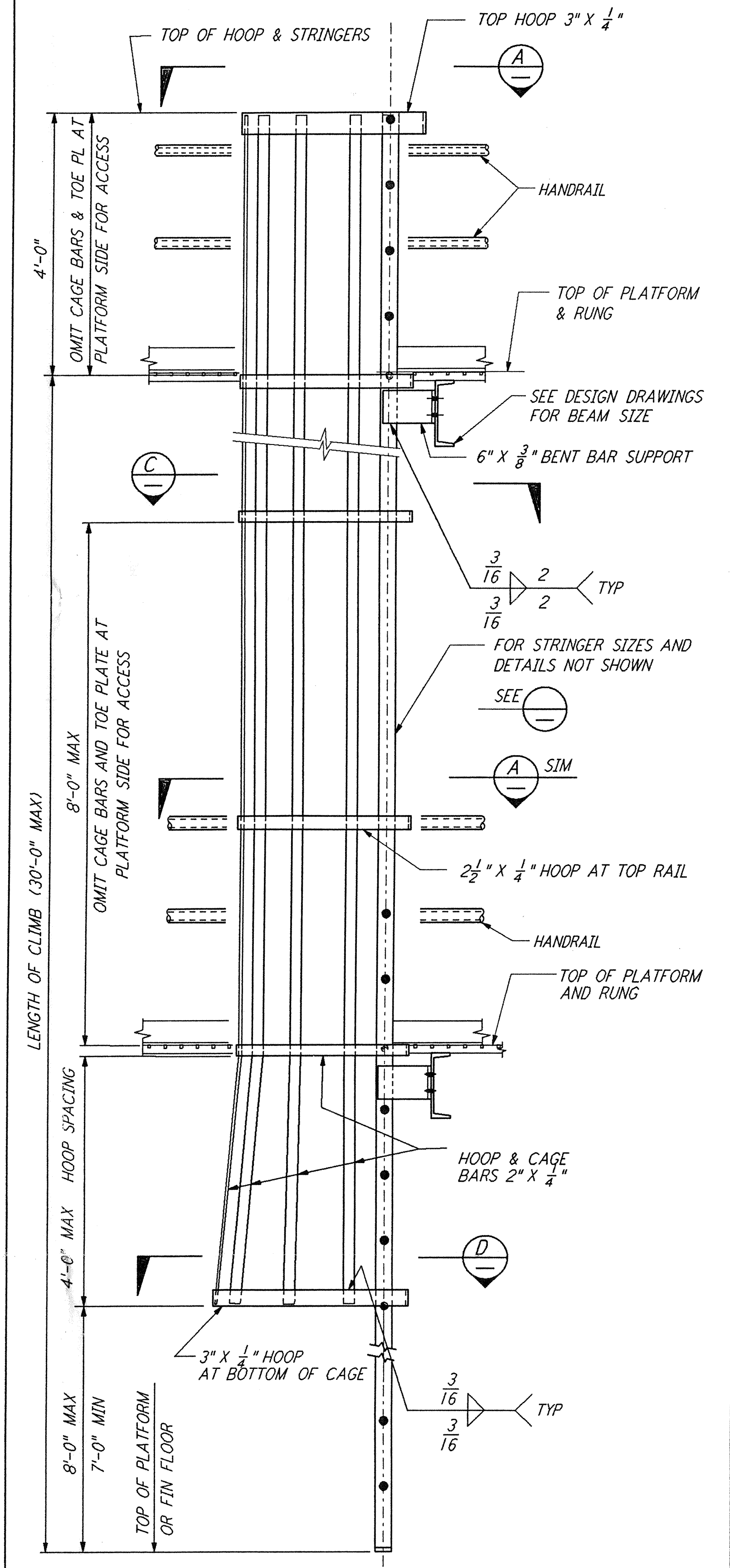
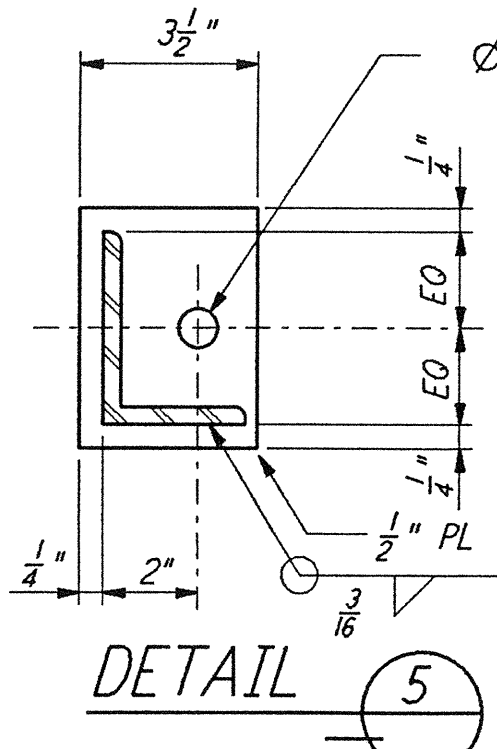
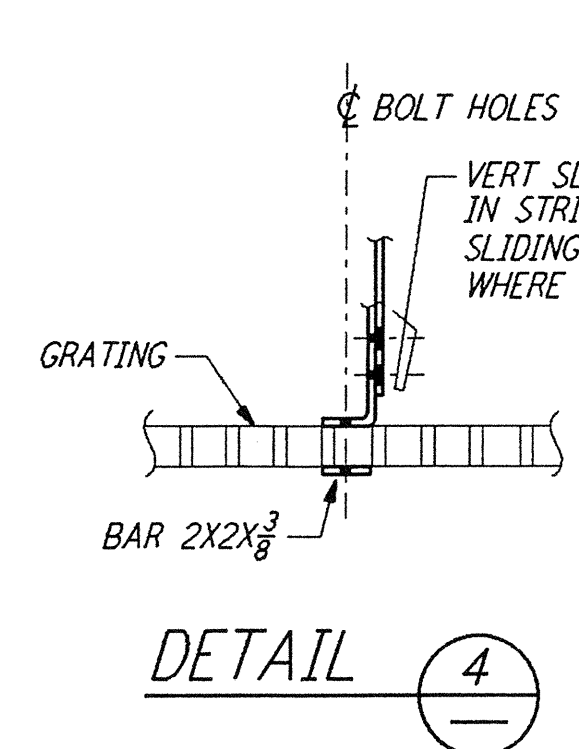


This document and the design it covers are the property of PARSONS. They are loaned only with the borrower's expressed written agreement that they will not be reproduced, copied, loaned, exhibited, or used in any other way, except by written consent from PARSONS to the borrower.

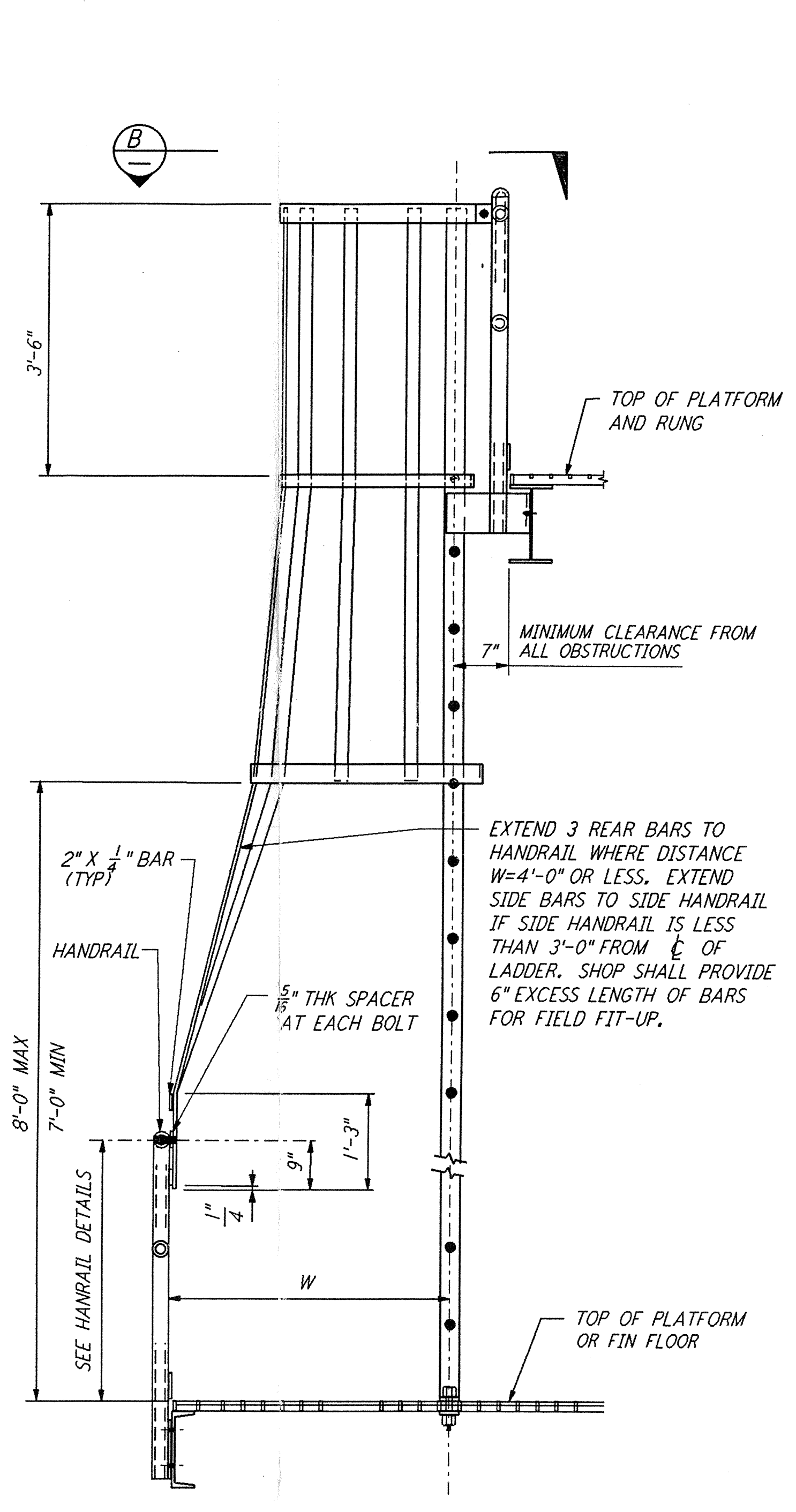


TYPICAL LADDER (1)

UNSUPPORTED LENGTH	STRINGER SIZE
8'-0" OR LESS	BAR 2 1/2" X 3/8"
OVER 8'-0" TO 18'-0"	L 2 1/2" X 2 X 3/8"
OVER 18'-0" TO 24'-0"	L 3 X 2 X 3/8"
OVER 24'-0" TO 30'-0"	L 4 X 3 X 3/8"

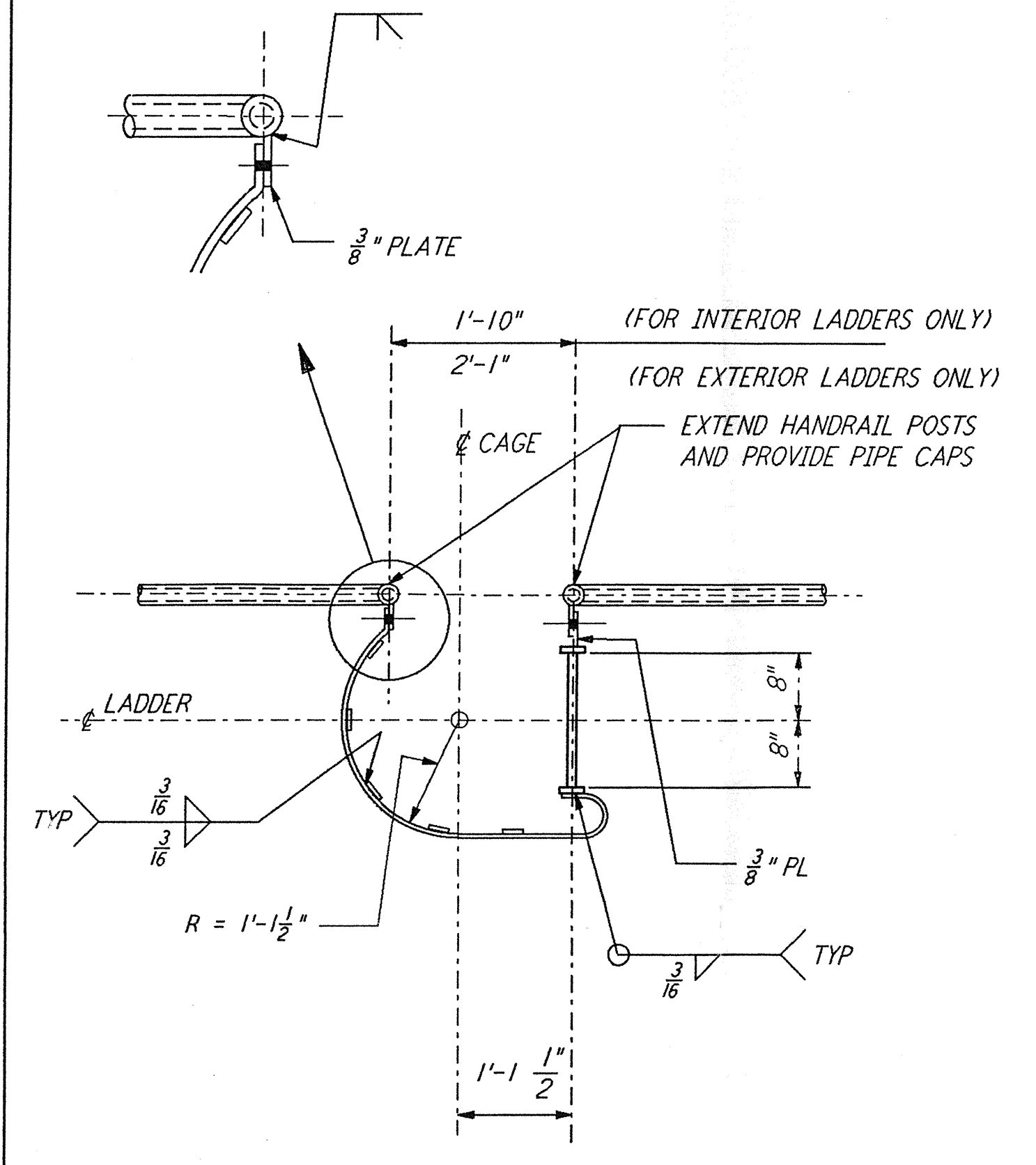


SIDE-STEP LADDER AND CAGE (2)

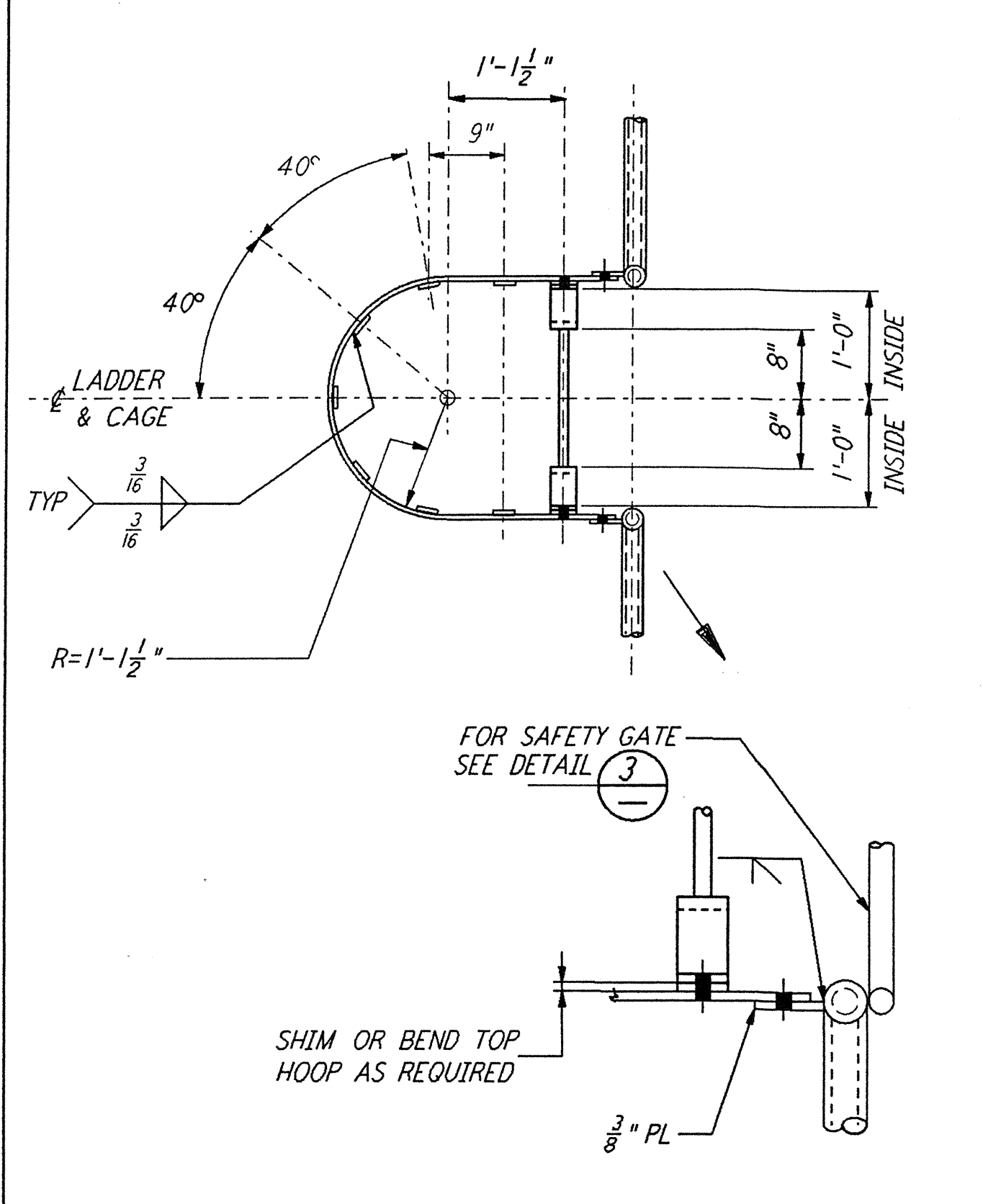


NOTE:
 FOR INFORMATION NOT SHOWN SEE DETAILS (1) & (2)

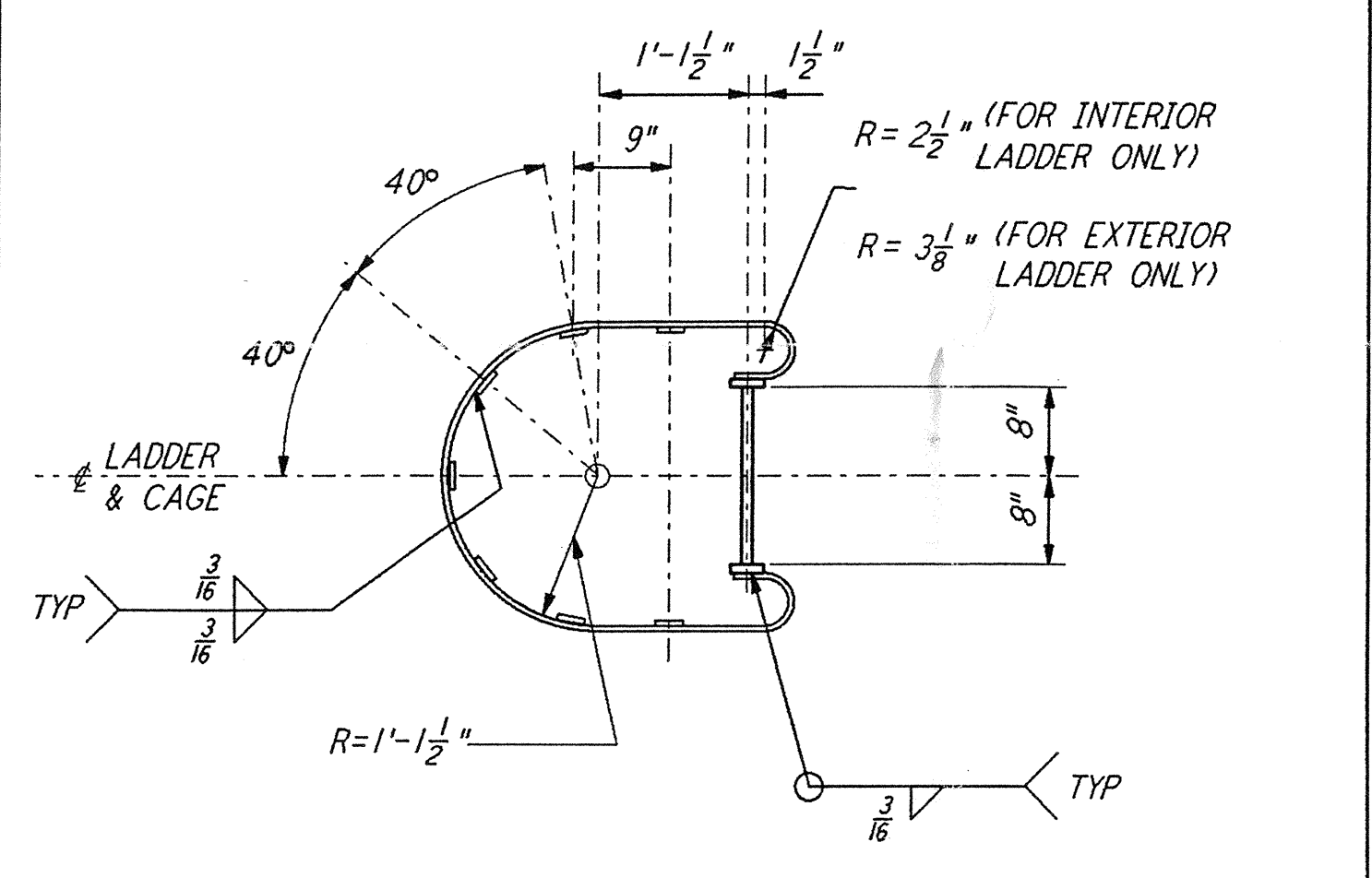
STEP-THROUGH LADDER & CAGE AND CAGE CONNECTION TO HANDRAIL (3)



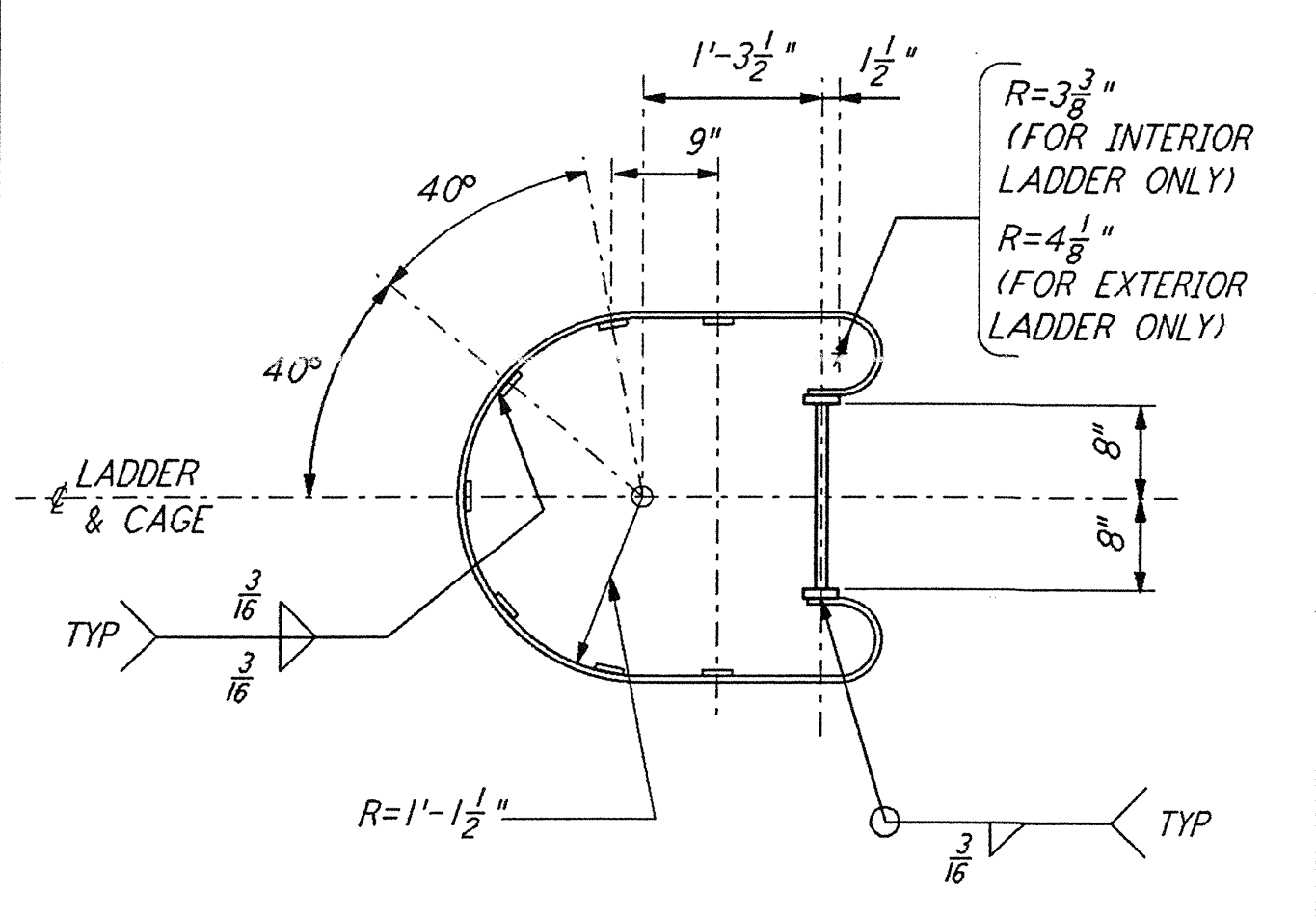
SIDE-STEP LADDER AND CAGE PLAN SECTION (A)



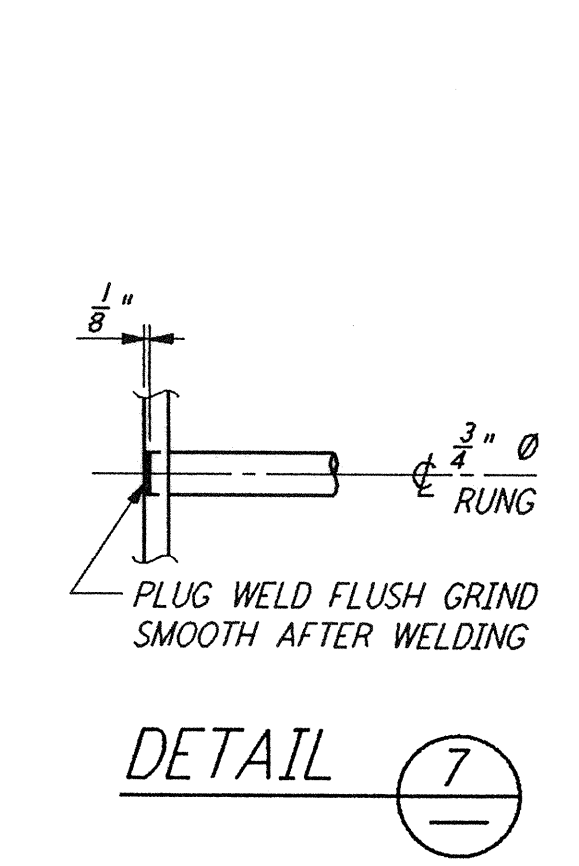
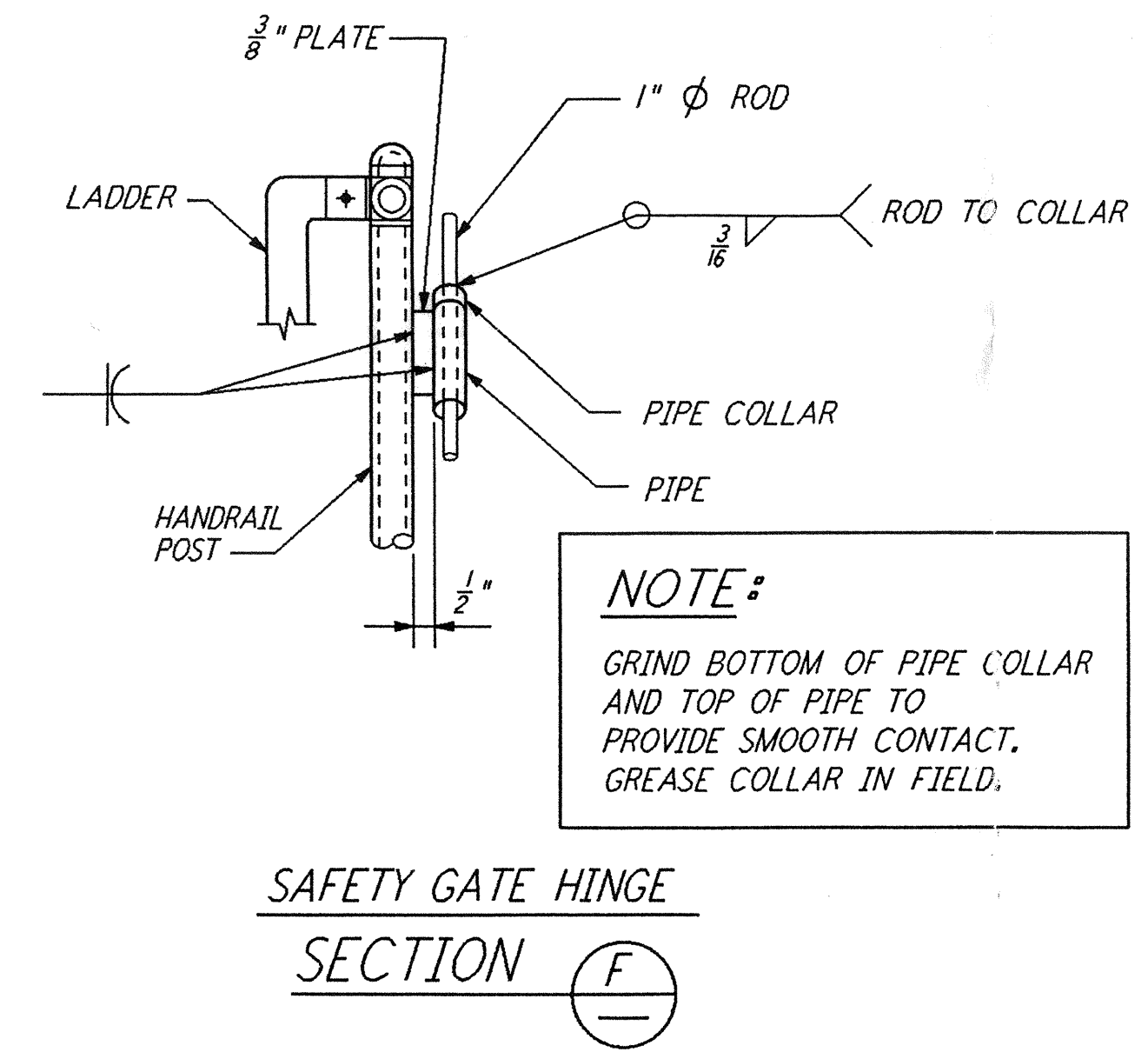
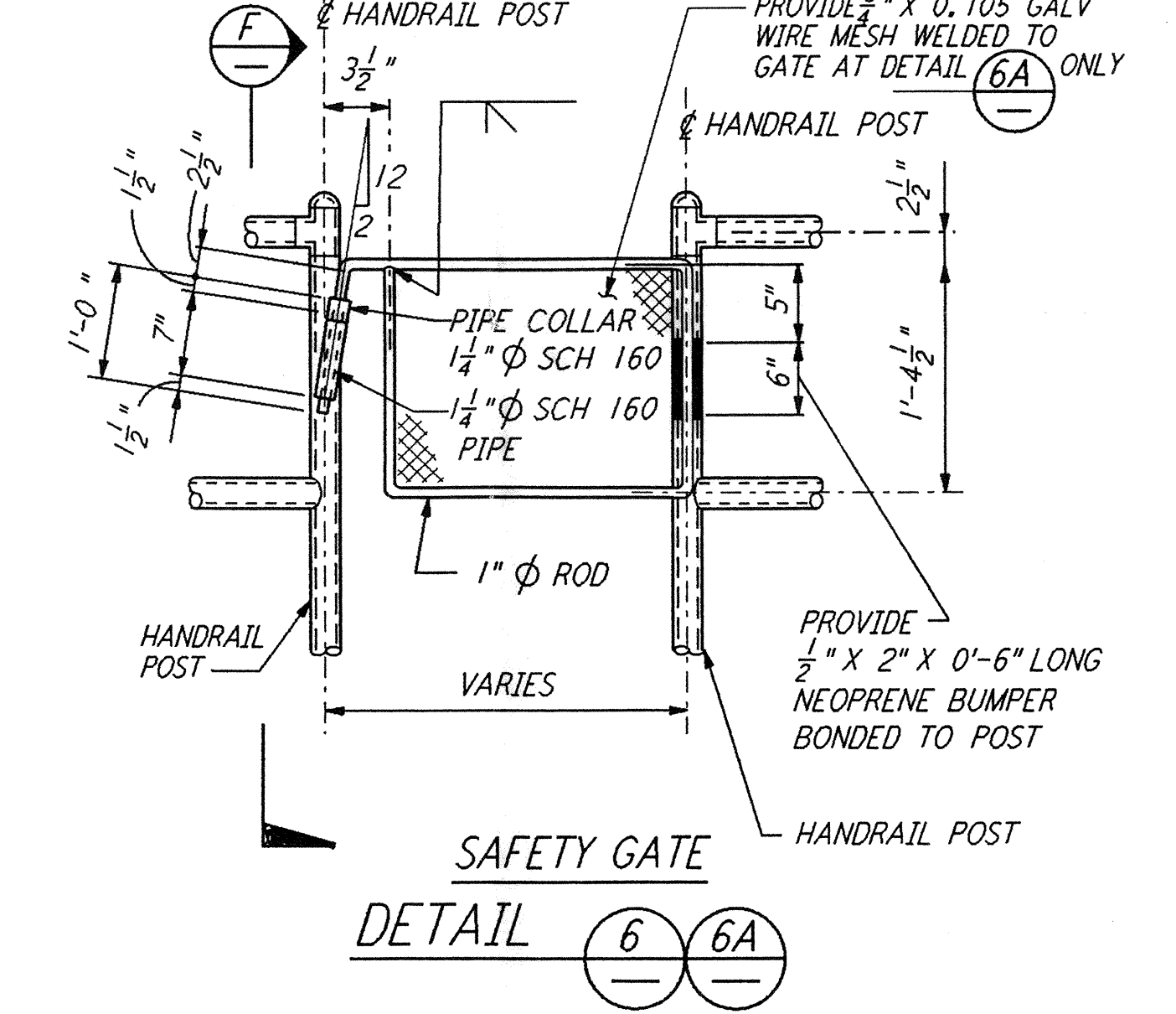
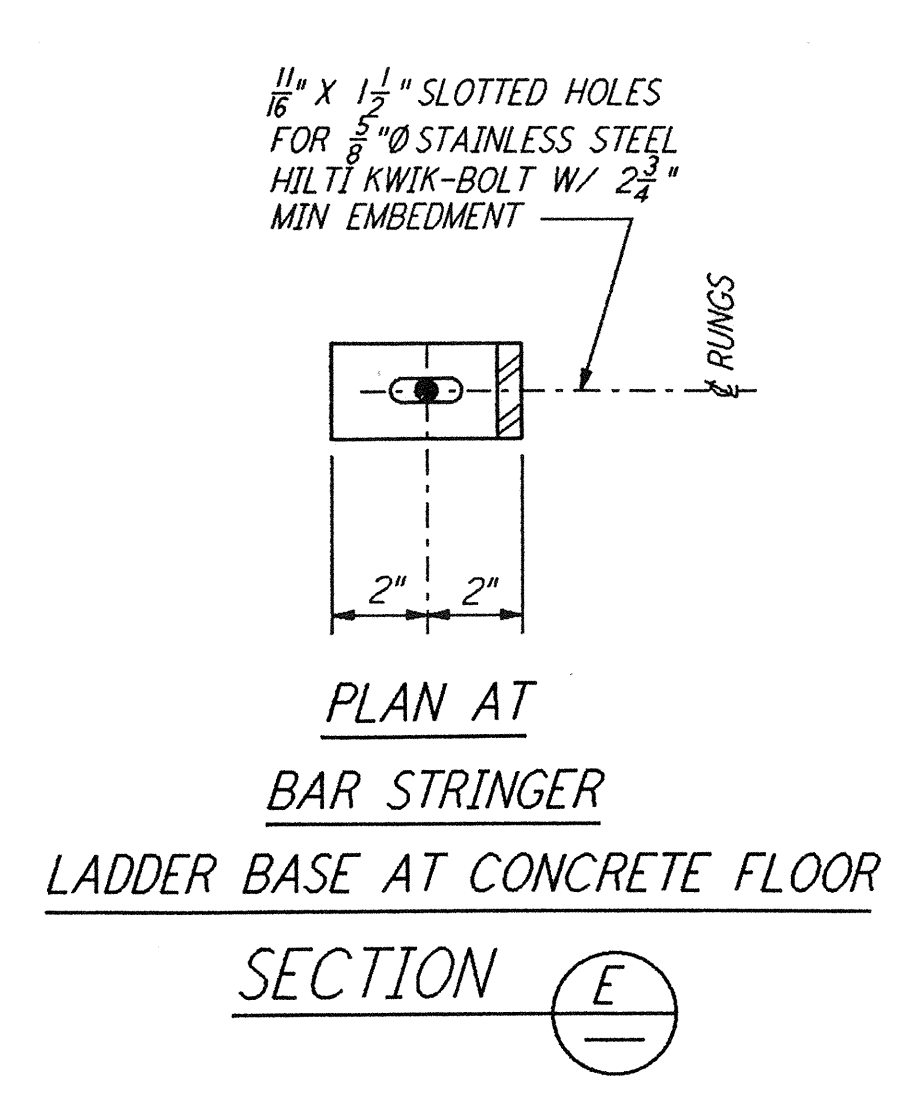
STEP-THROUGH LADDER AND CAGE PLAN SECTION (B)



TYPICAL HOOP PLAN SECTION (C)



BOTTOM HOOP PLAN SECTION (D)



- NOTES:**
- FOR GENERAL NOTES, SYMBOLS AND ABBREVIATIONS SEE DRAWING S-001.
 - ALL BURRS AND SHARP EDGES SHALL BE REMOVED FROM THE LADDERS, CAGES AND SAFETY BARS.
 - ALL INTERMEDIATE CAGE HOOPS SHALL BE SPACED EQUALLY AND SHALL NOT EXCEED 4 FEET. IF CAGE LENGTH EXCEEDS 20 FEET, LADDER MUST BE EQUIPPED WITH A 3" HOOP PREFERABLY AT THE MIDWAY POINT OF THE CAGE.
 - LADDERS SERVING PLATFORMS OR LANDINGS 4 FEET OR MORE ABOVE GRADE AND ALL PLATFORMS REQUIRING A RAILING SHALL BE EQUIPPED WITH A SAFETY GATE.

Date Revised:	4/11/96	LG00-0960293-B-15
Drawn:	4/19/96	LG00-0960293-B-15
Checked:		LG00-0960293-B-15
Approved:		LG00-0960293-B-15
Client:		
Date:		
Client:		
Date:		

NO.	DATE	BY	CHKD	ENGR	PROJ	DESCRIPTION
B	4-19-96	MCS	oem	ph		FINAL DESIGN REVIEW & BID
A	10-31-95					PRELIMINARY DESIGN REVIEW

DRAWN	MCS
CHECKED	
ENGINEER	
PROJ	

PARSONS
 100 WEST WALNUT STREET
 PASADENA, CALIFORNIA

LIGO
 CALIFORNIA INSTITUTE OF TECHNOLOGY
 MASSACHUSETTS INSTITUTE OF TECHNOLOGY

LASER INTERFEROMETER
 GRAVITATIONAL-WAVE OBSERVATORY
 SITE NO. 1 - HANFORD, WASHINGTON

TITLE	STRUCTURAL STANDARD	SHEET NUMBER	NONE	CONTRACT NUMBER	PP150969	PROJECT NUMBER	8094
STRUCTURAL STANDARD			WA-S-008		REVISIONS		