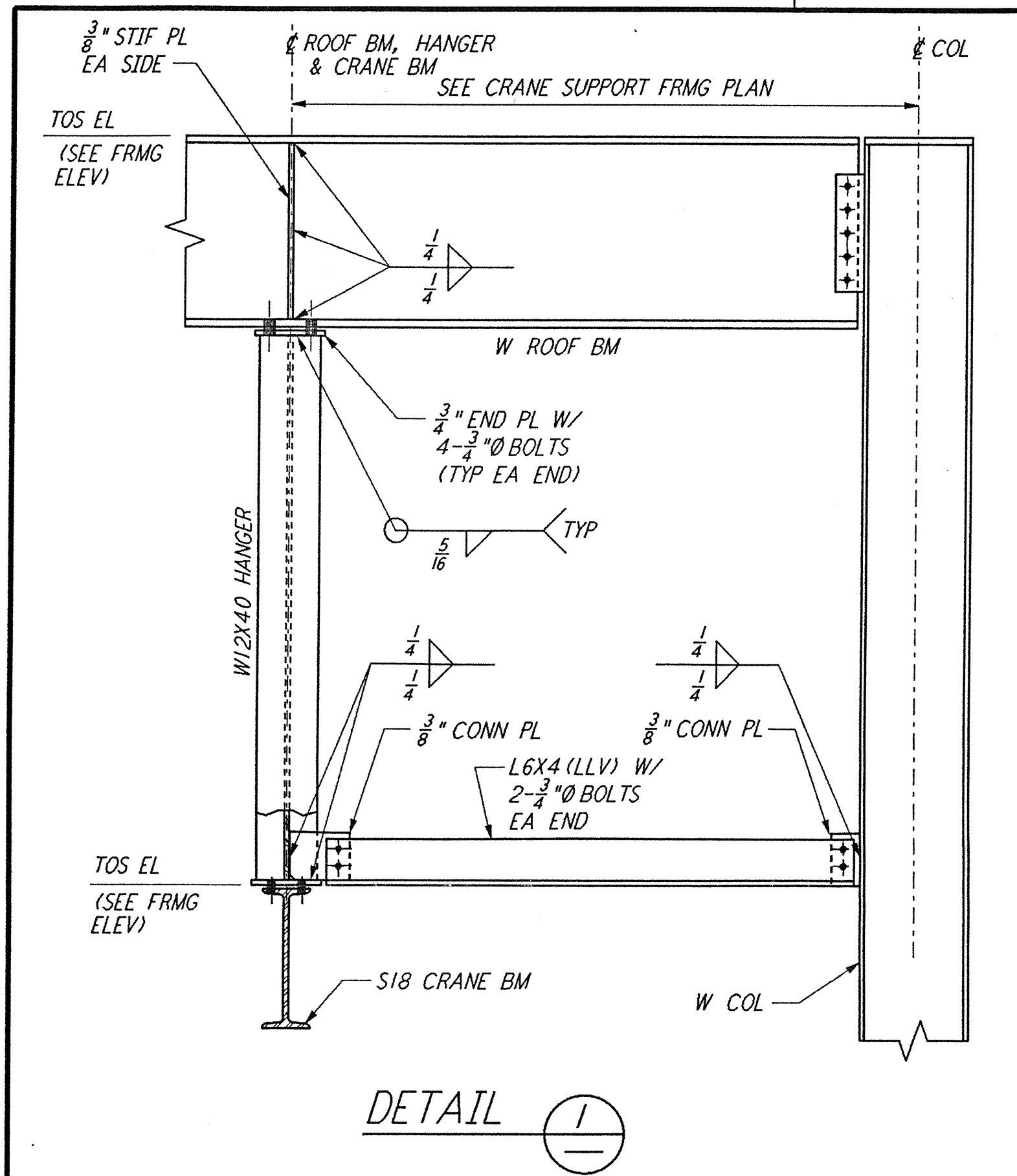
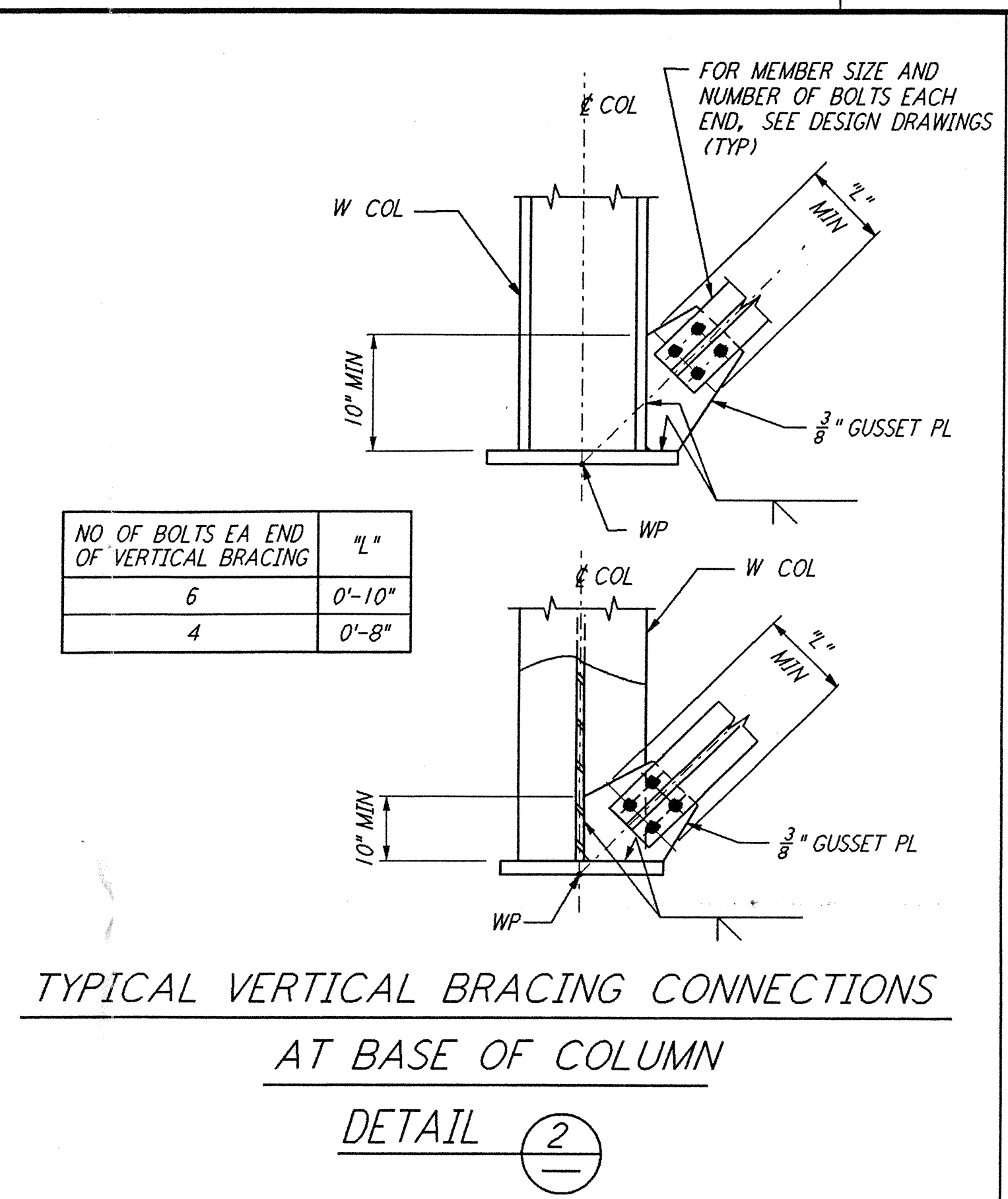


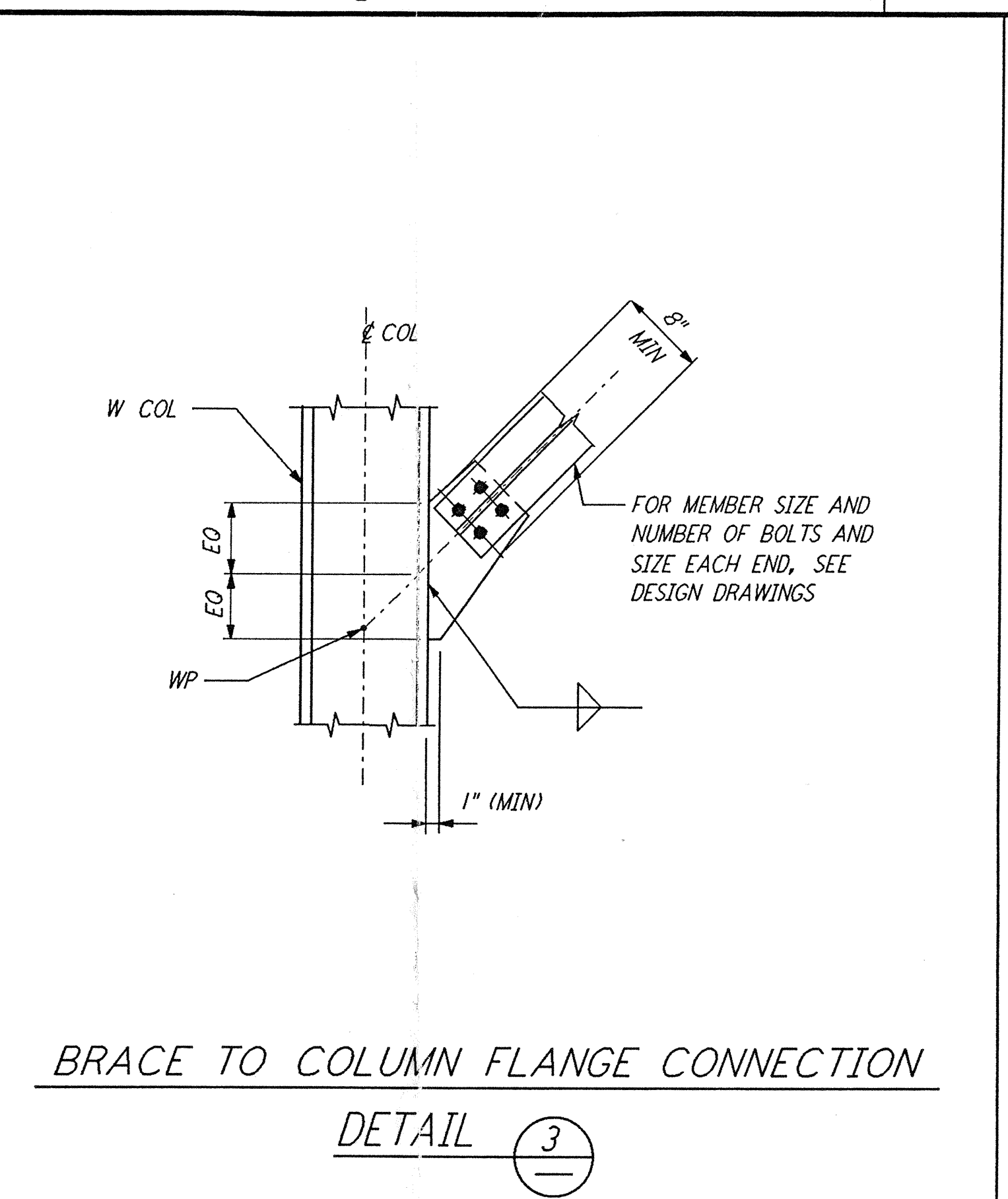
This document and the design it covers are the property of PARSONS. They are loaned only with the borrower's expressed written agreement that they will not be reproduced, copied, loaned, exhibited, or used in any other way, except by written consent from PARSONS to the borrower.



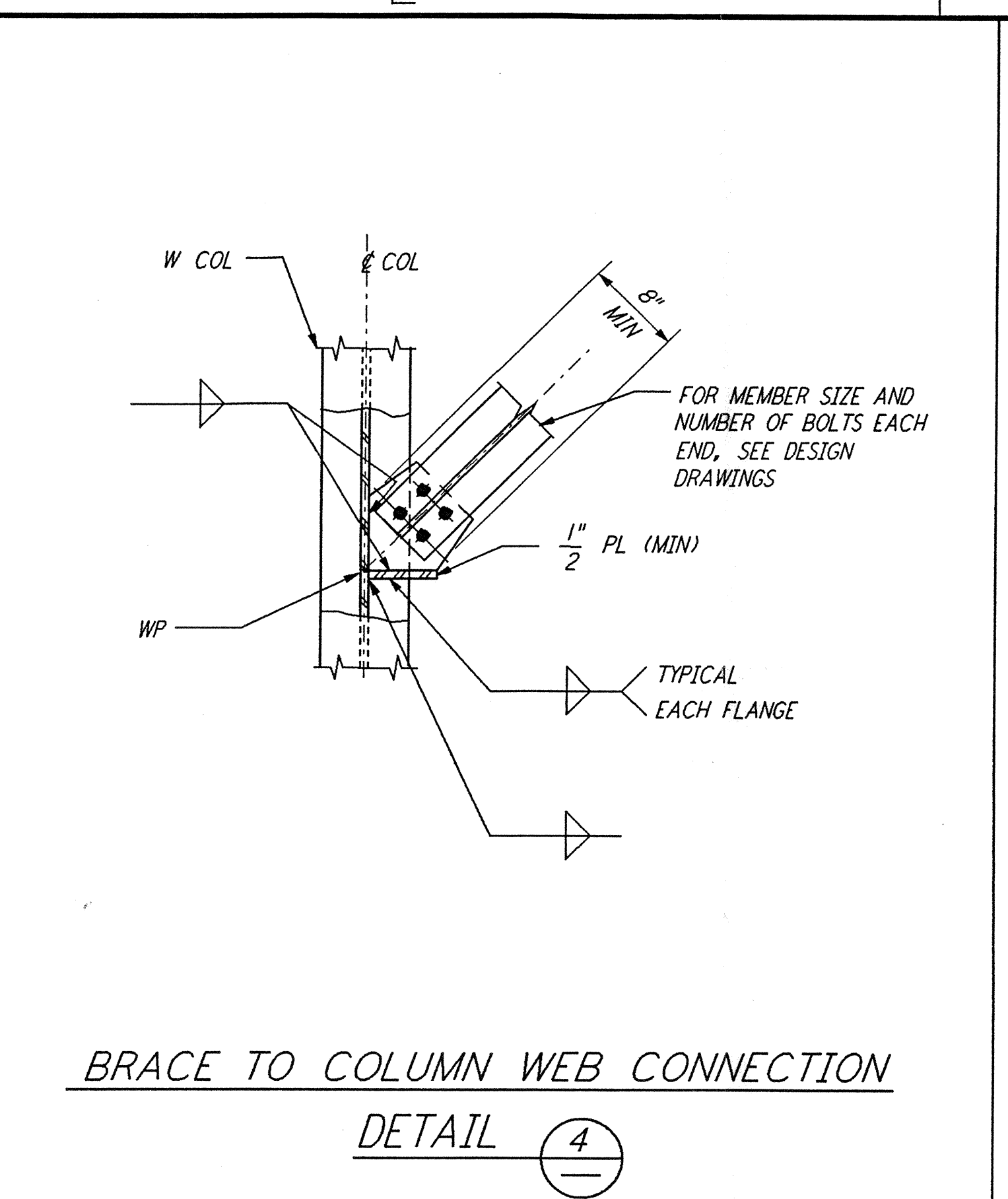
DETAIL 1



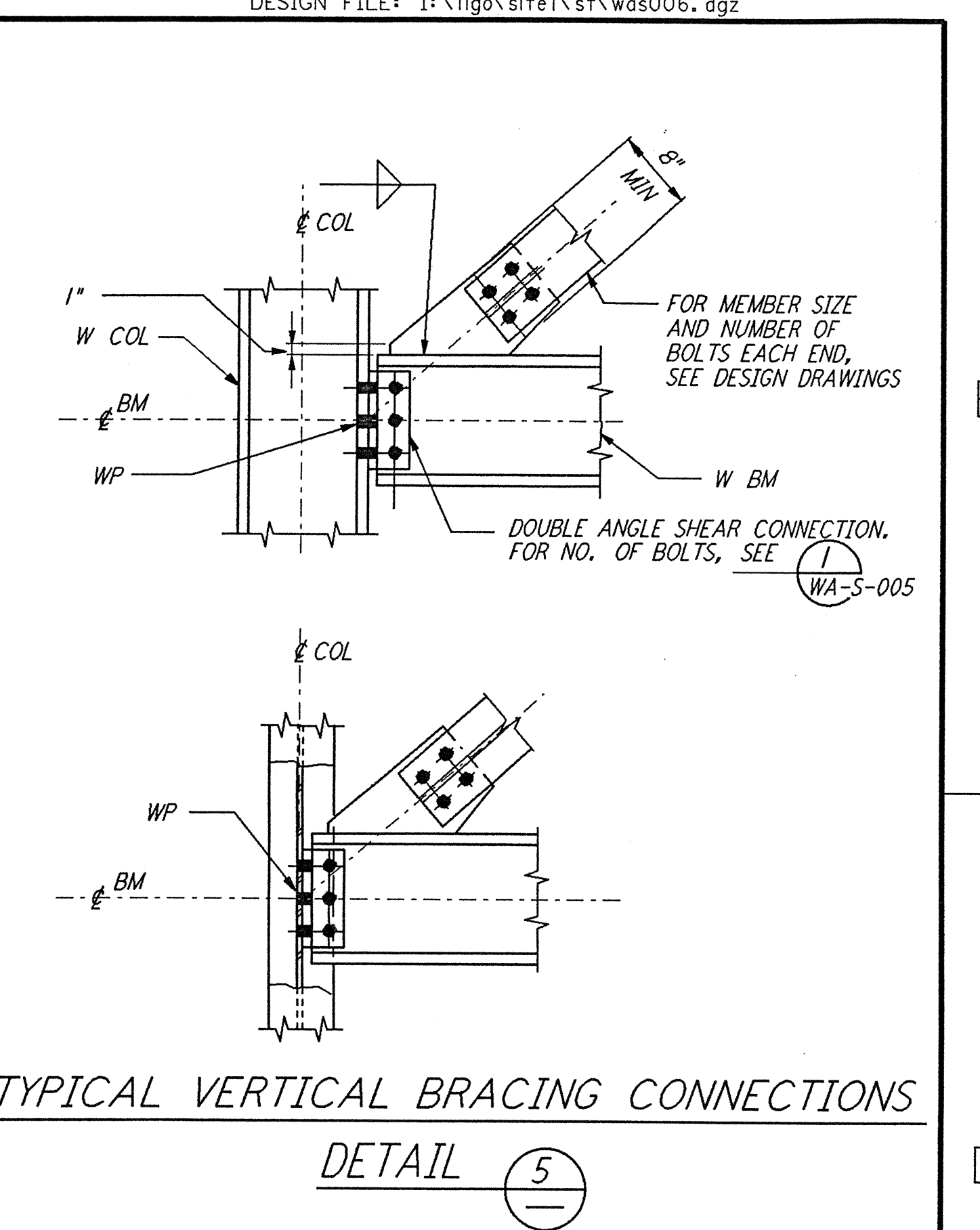
TYPICAL VERTICAL BRACING CONNECTIONS AT BASE OF COLUMN
 DETAIL 2



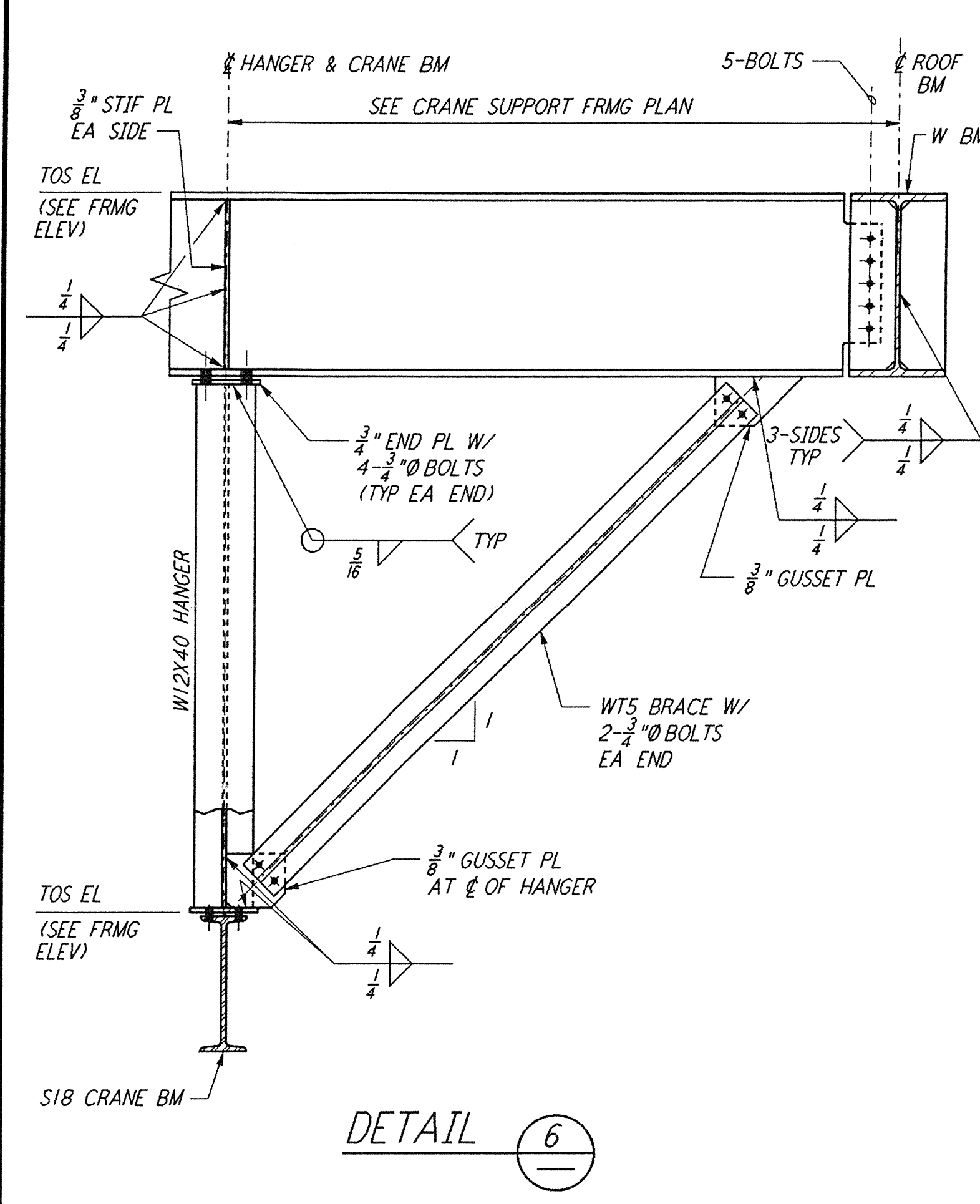
BRACE TO COLUMN FLANGE CONNECTION
 DETAIL 3



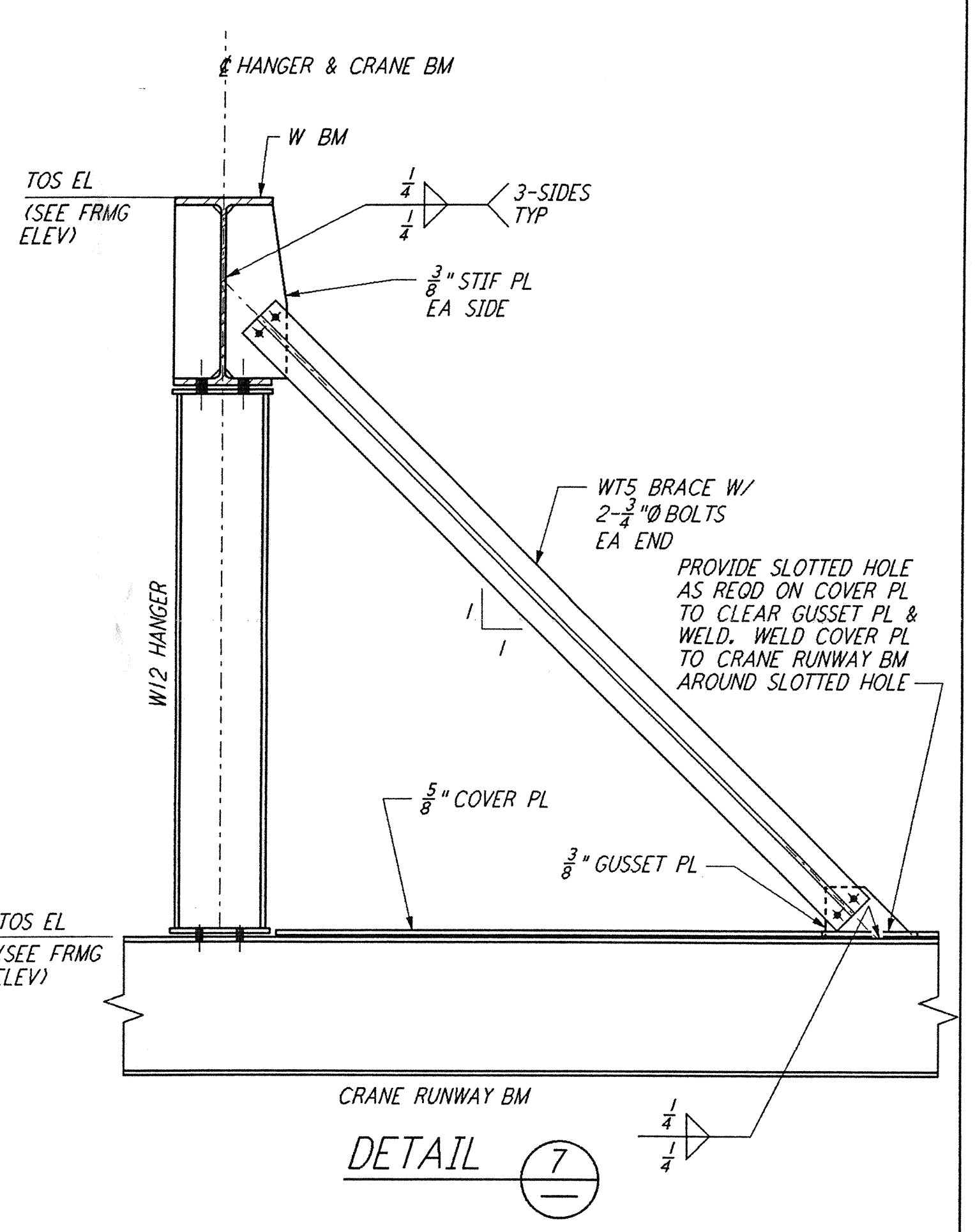
BRACE TO COLUMN WEB CONNECTION
 DETAIL 4



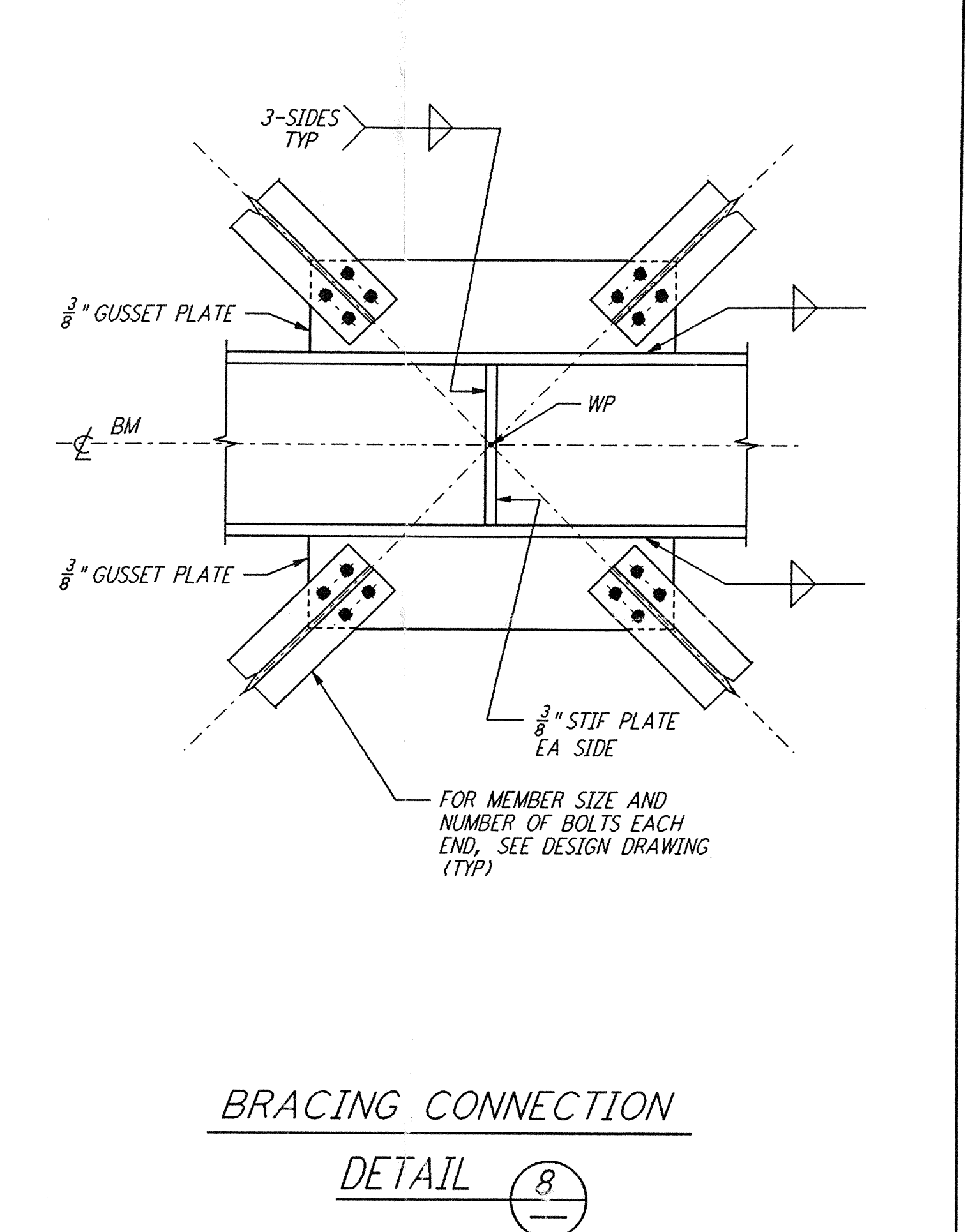
TYPICAL VERTICAL BRACING CONNECTIONS
 DETAIL 5



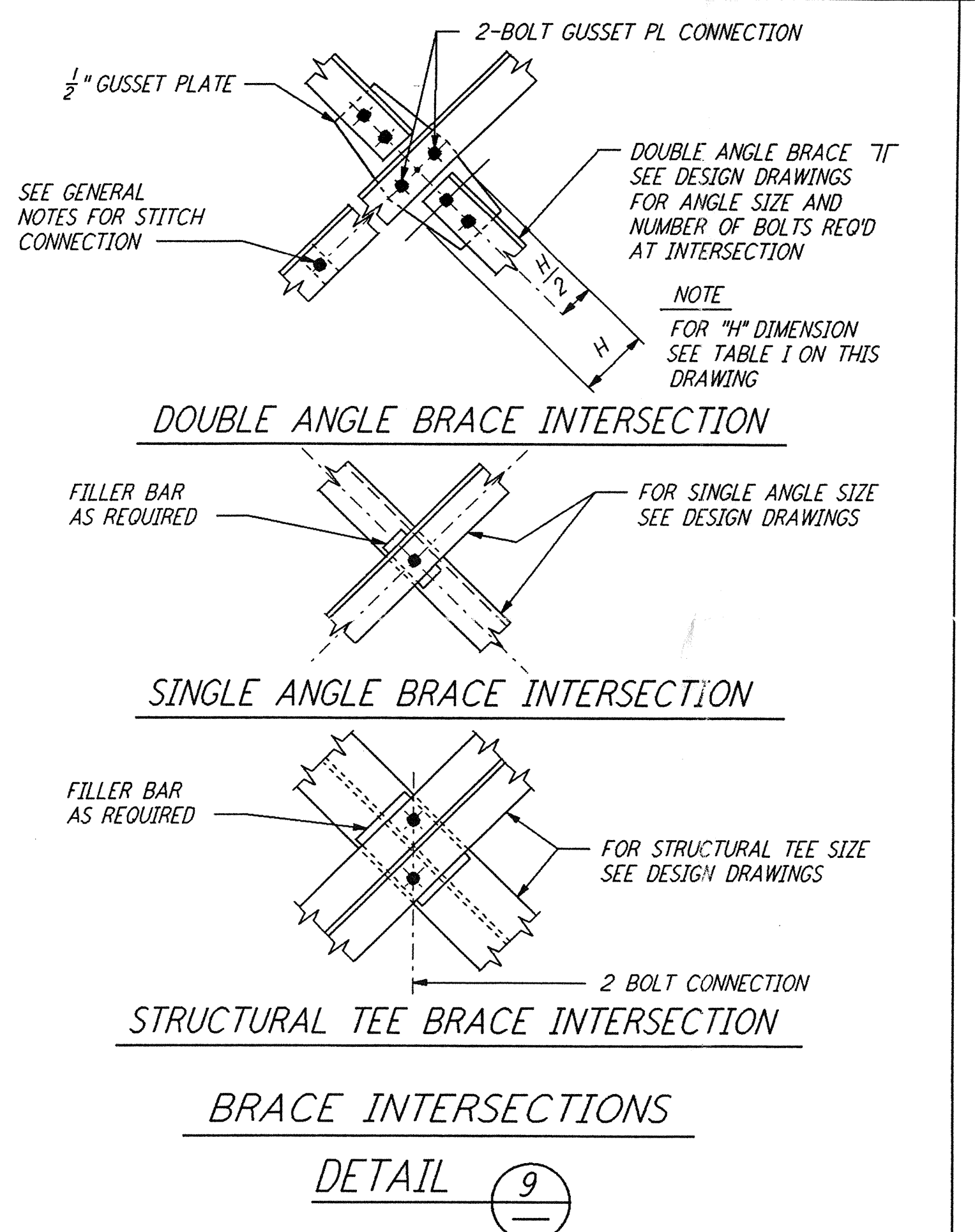
DETAIL 6



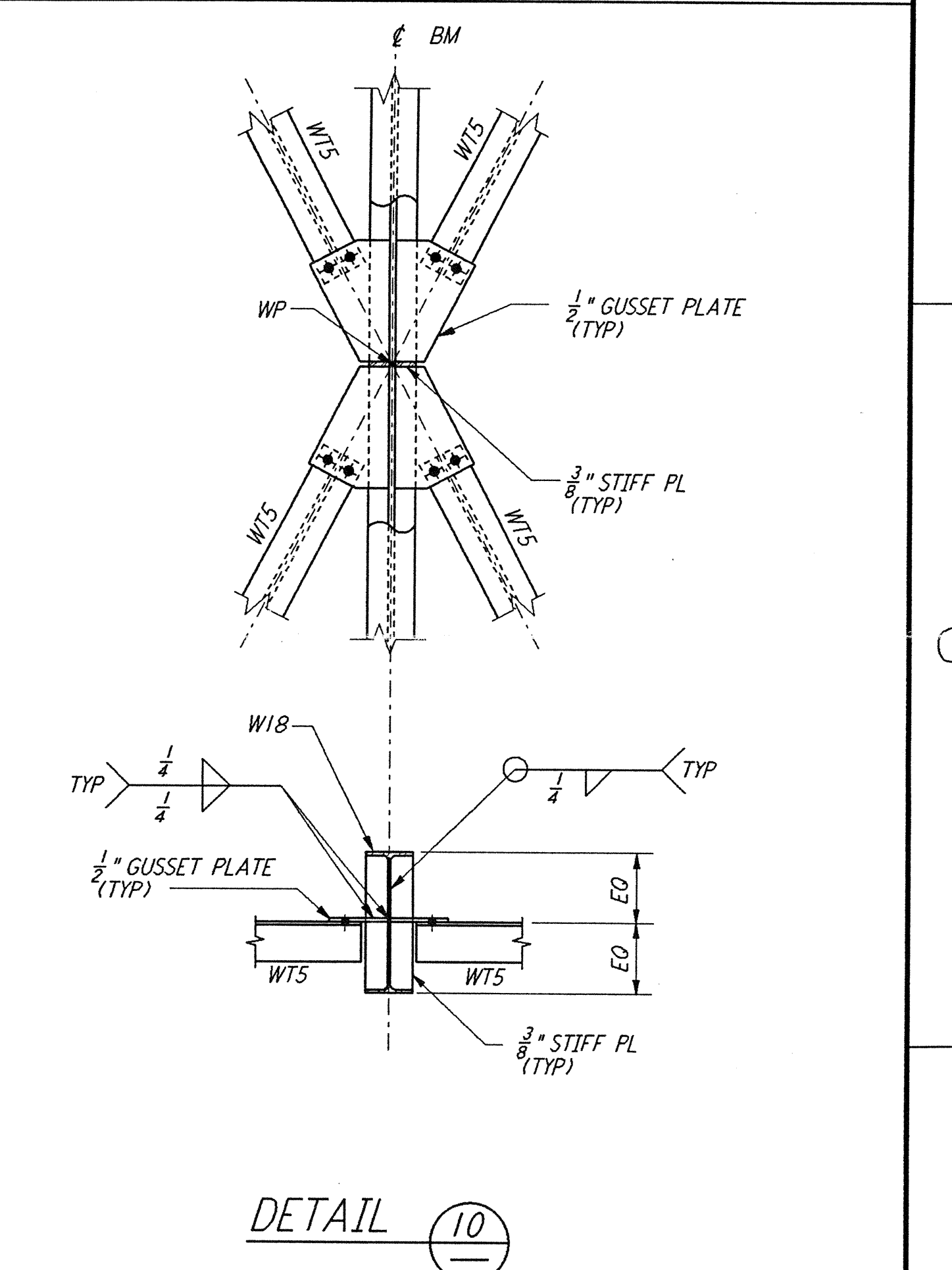
CRANE RUNWAY BEAM CONNECTION
 DETAIL 7



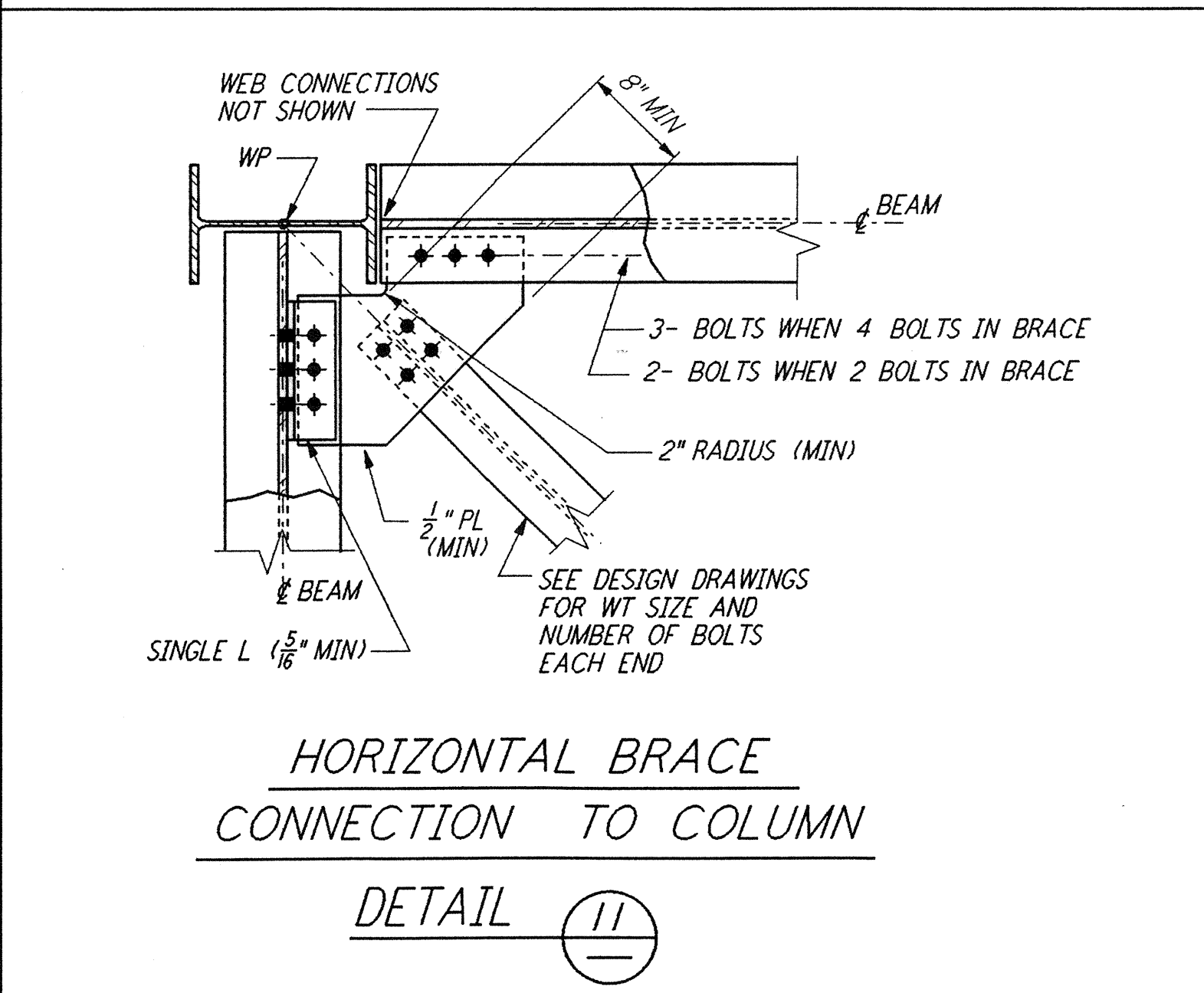
BRACING CONNECTION
 DETAIL 8



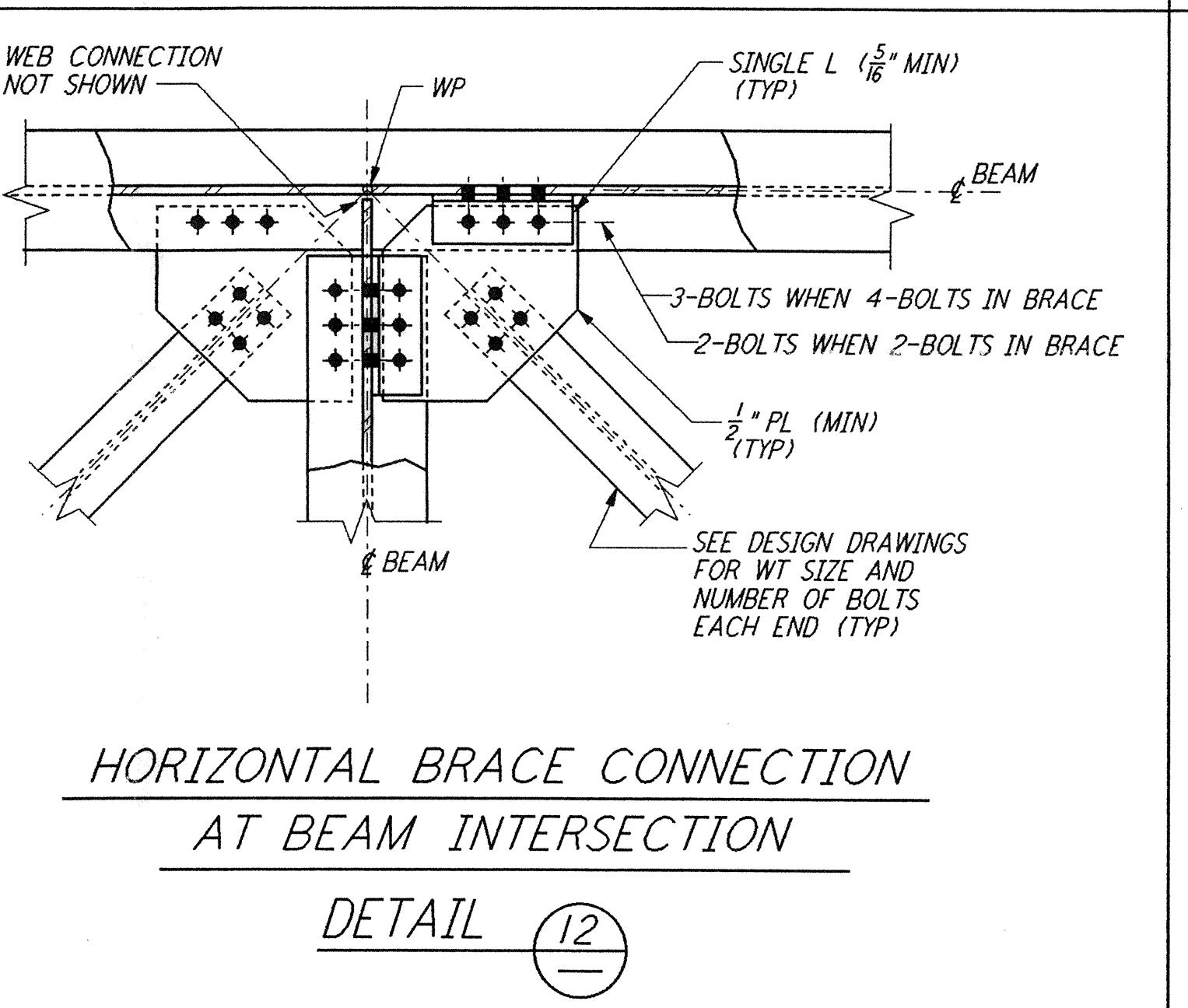
BRACE INTERSECTIONS
 DETAIL 9



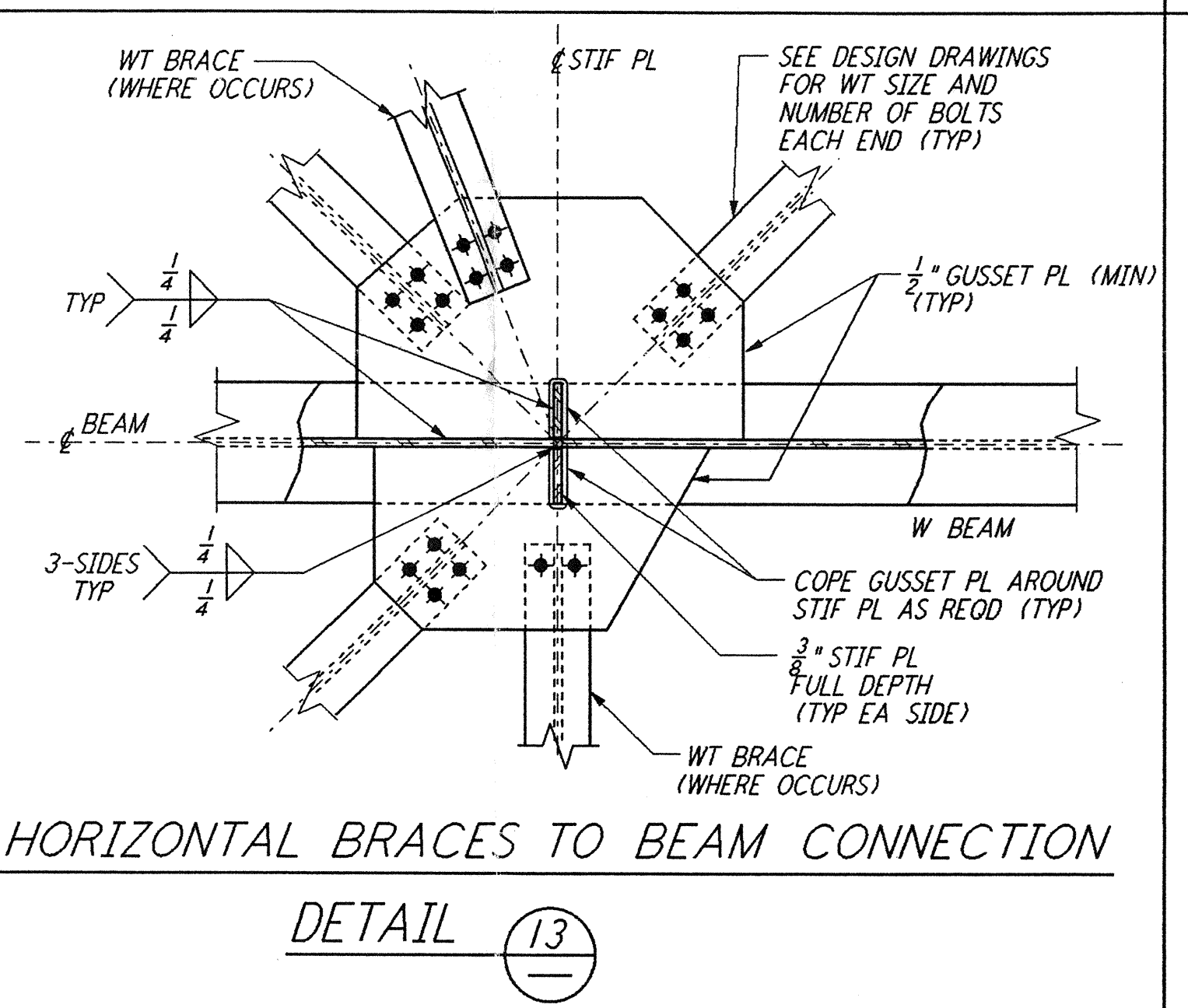
STRUCTURAL TEE BRACE INTERSECTION
 DETAIL 10



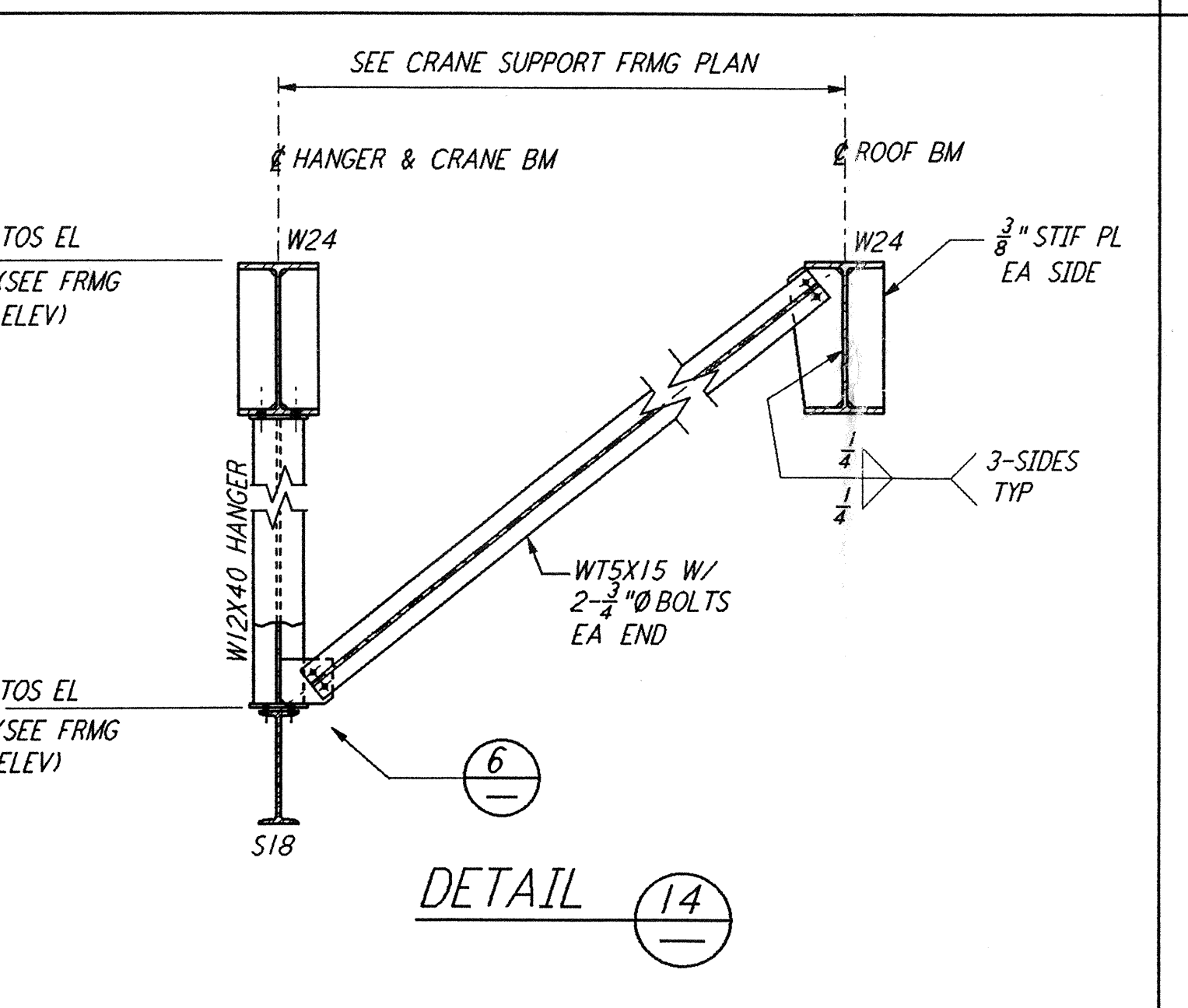
HORIZONTAL BRACE CONNECTION TO COLUMN
 DETAIL 11



HORIZONTAL BRACE CONNECTION AT BEAM INTERSECTION
 DETAIL 12



HORIZONTAL BRACES TO BEAM CONNECTION
 DETAIL 13



DETAIL 14

NOTES:
 1. FOR GENERAL NOTES, ABBREVIATIONS AND SYMBOLS, SEE DRAWING S-001.
 2. ALL ANGLE VERTICAL BRACING END CONNECTIONS SHALL HAVE TWO BOLTS EACH END UNLESS NOTED OTHERWISE ON THE DESIGN DRAWINGS.

Date Prepared	4/19/96	LIGO	D 9160 011 - 0 - 0
Drawn	J. S.	LIGO	400-5-556-841-0
Checked	J. S.	LIGO	C 9160 011 - 0 - 0
Design	J. S.	LIGO	
Client/Transmittal		LIGO	
Date	J. S.	LIGO	

REV	NO.	DATE	BY	CHKD	ENGR	PROJ	DESCRIPTION
B	4-19-96	MCS	DD-1	JSP	TDM	FINAL DESIGN REVIEW & BID	
A	10-31-95					PRELIMINARY DESIGN REVIEW	

DRAWN	MCS
CHECKED	
ENGINEER	
PROJ	

PARSONS
 100 WEST WALNUT STREET
 PASADENA, CALIFORNIA

LIGO
 CALIFORNIA INSTITUTE OF TECHNOLOGY
 MASSACHUSETTS INSTITUTE OF TECHNOLOGY

LASER INTERFEROMETER
 GRAVITATIONAL-WAVE OBSERVATORY
 SITE NO. 1 - HANFORD, WASHINGTON

SCALE: NONE
 PROJECT NUMBER: 8094
 SHEET NUMBER: PPI50969
WA-S-006