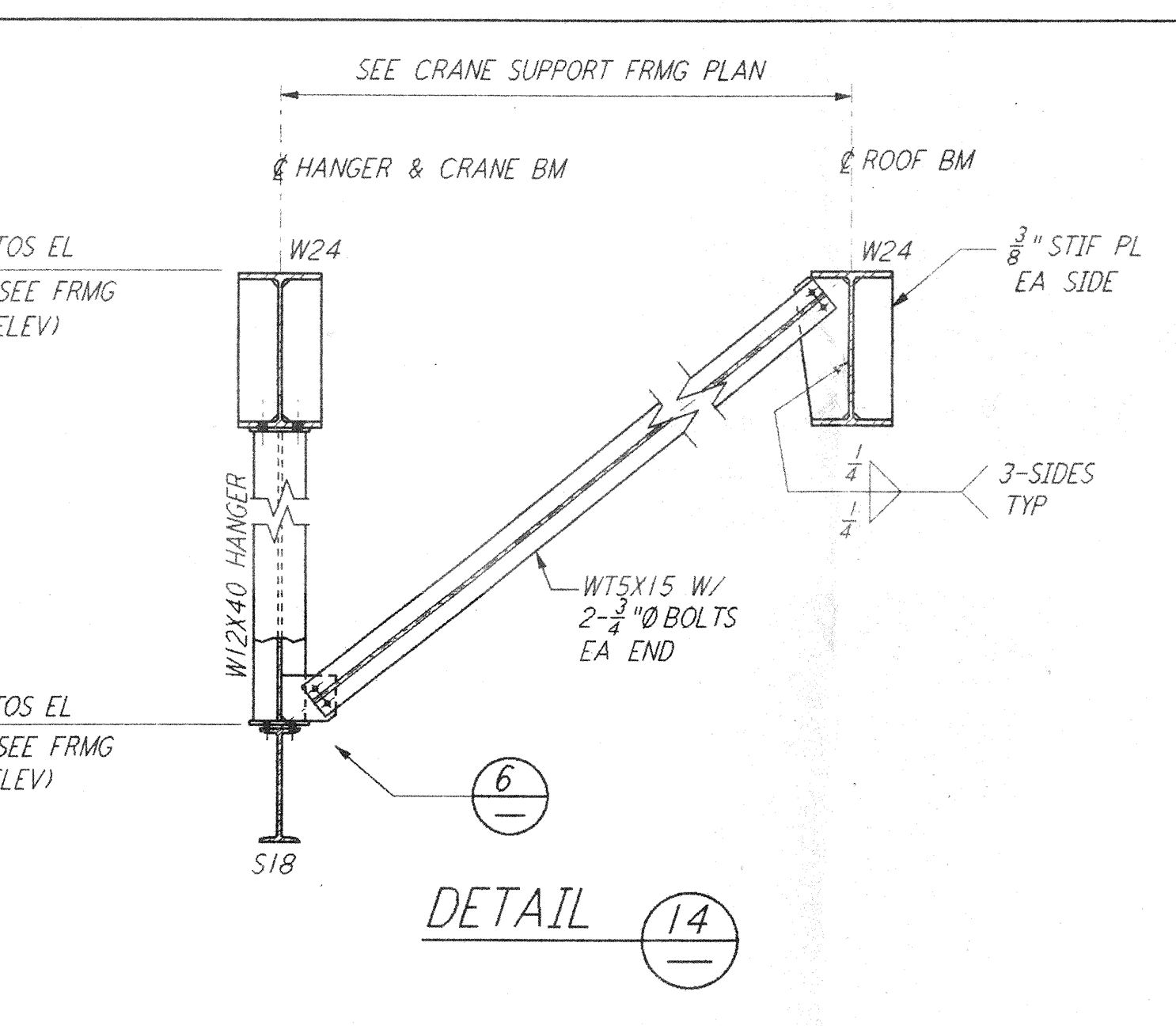
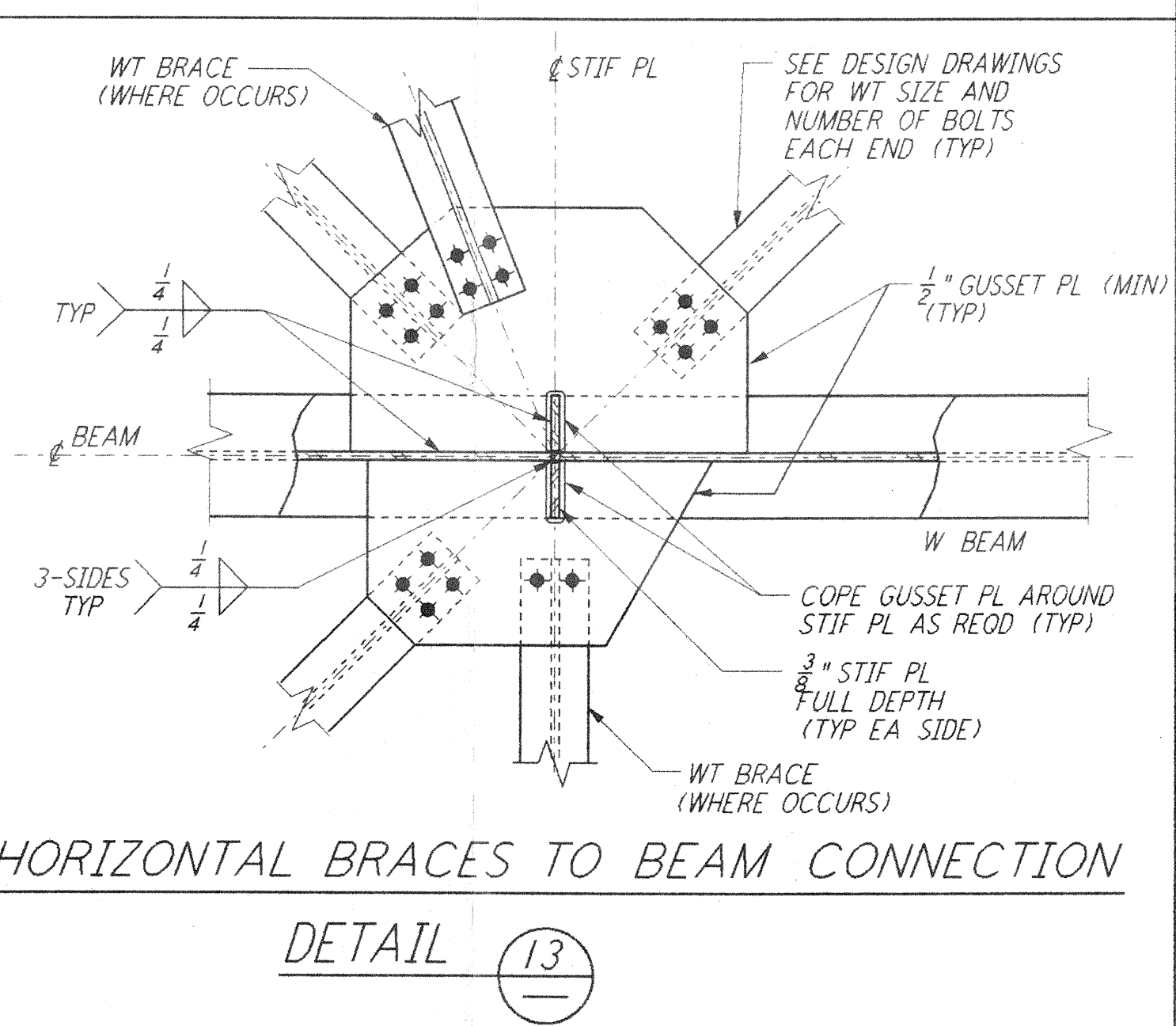
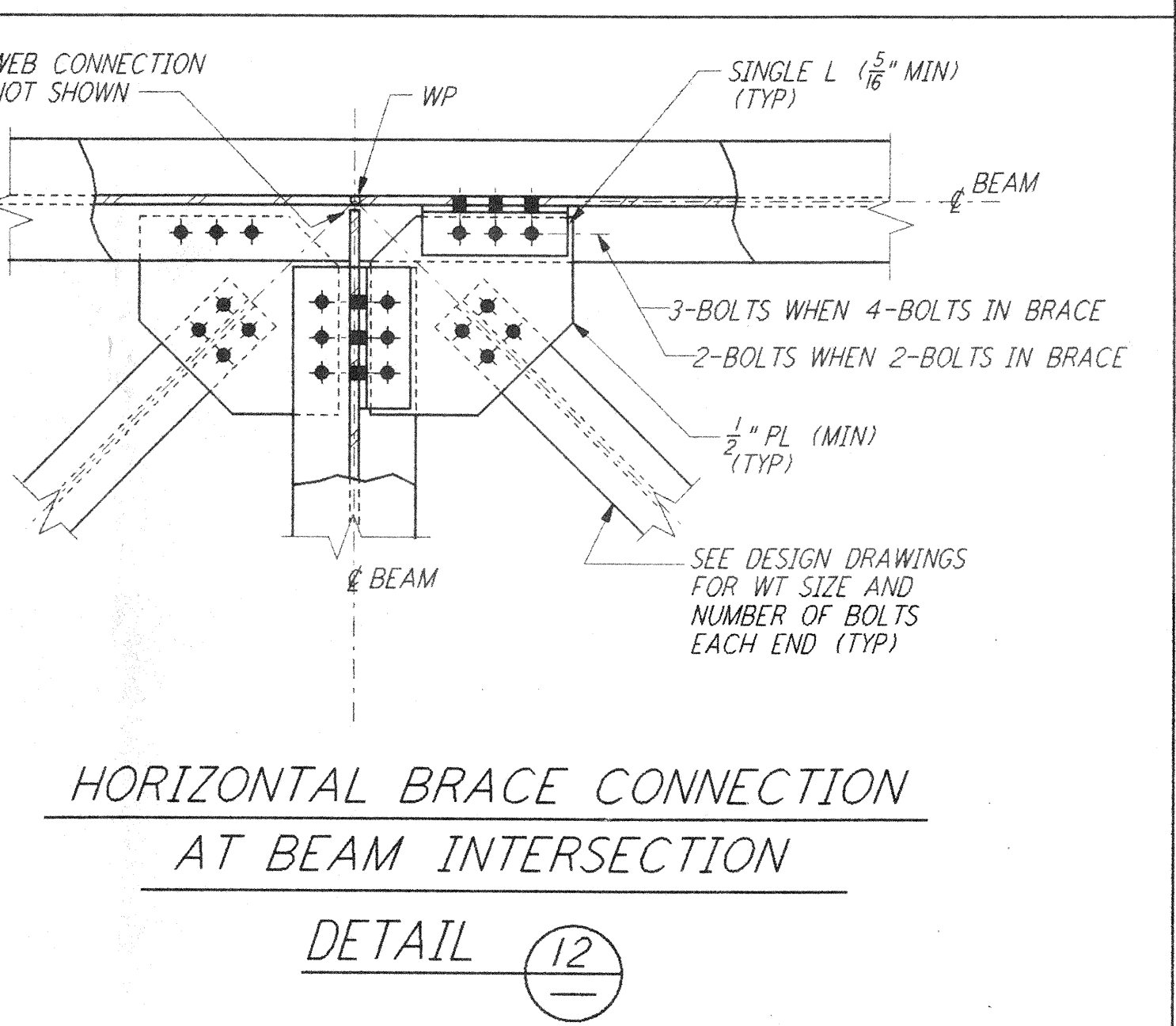
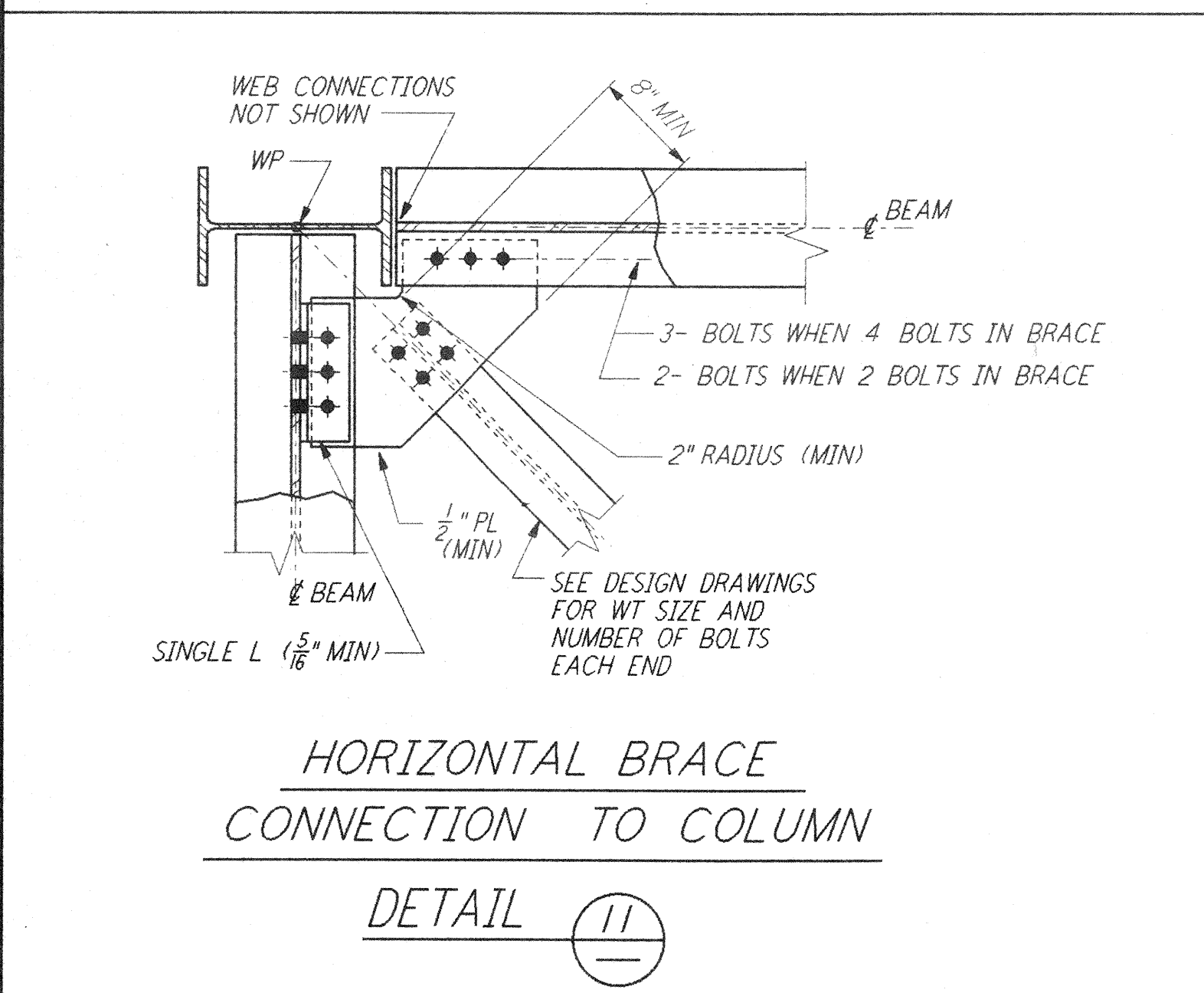
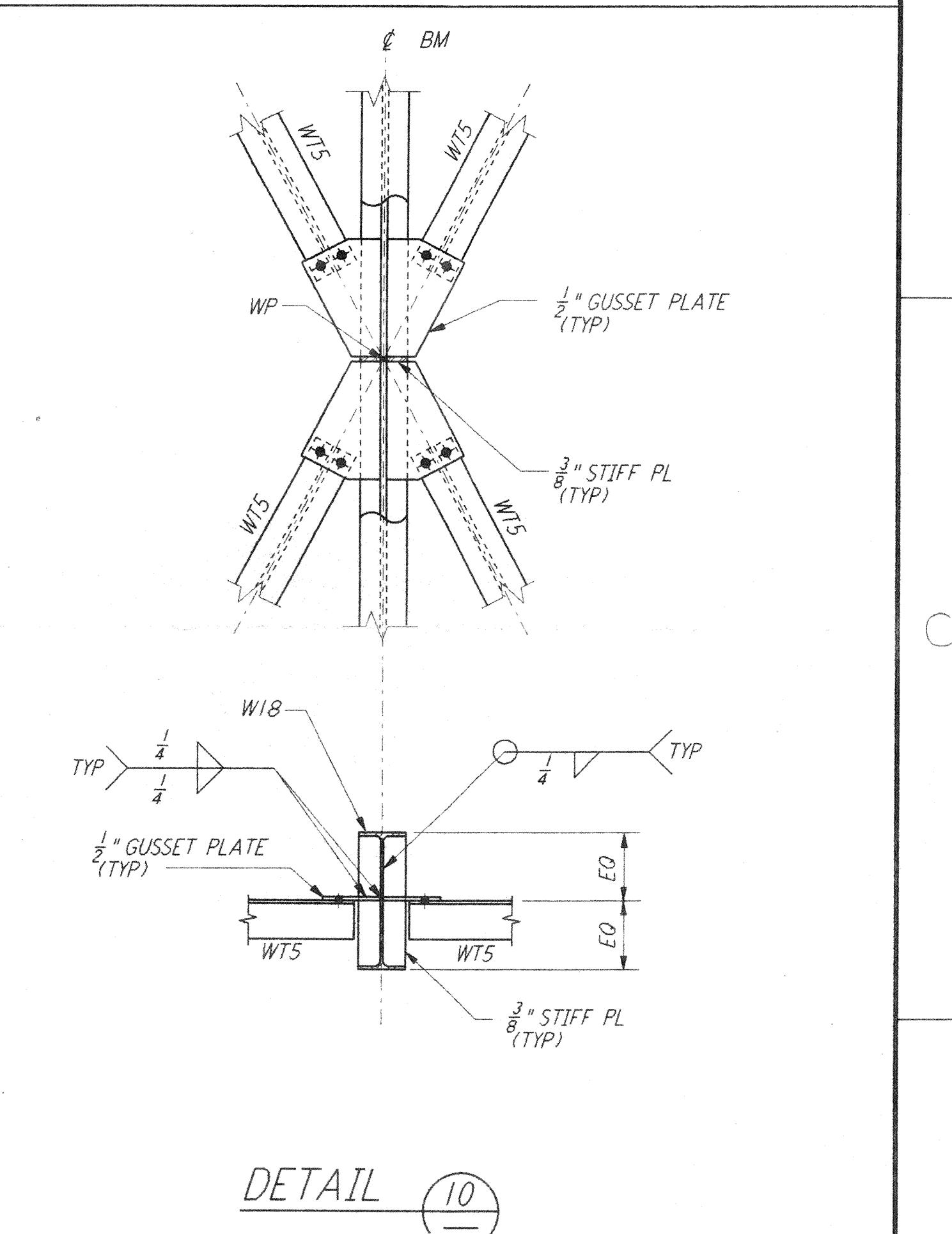
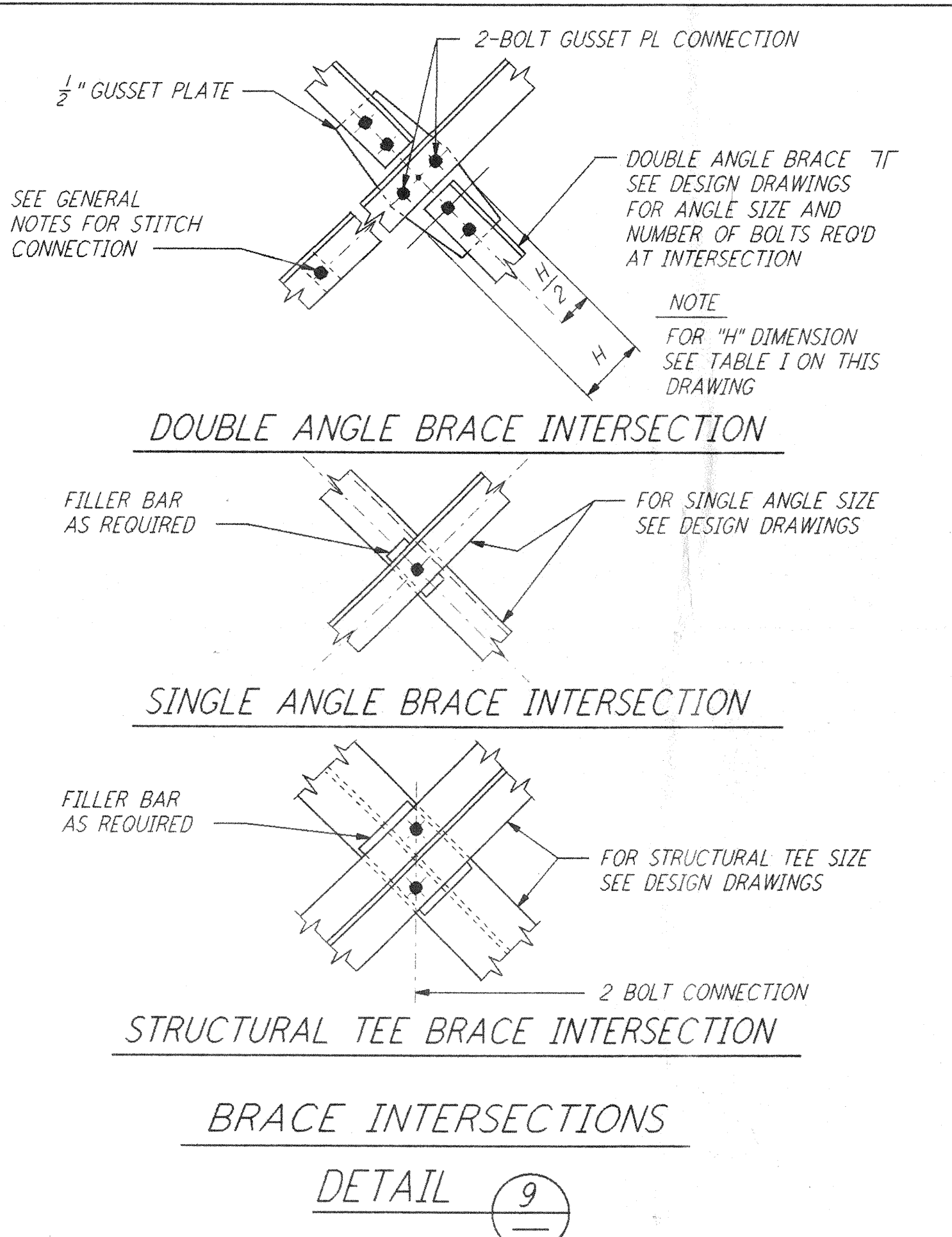
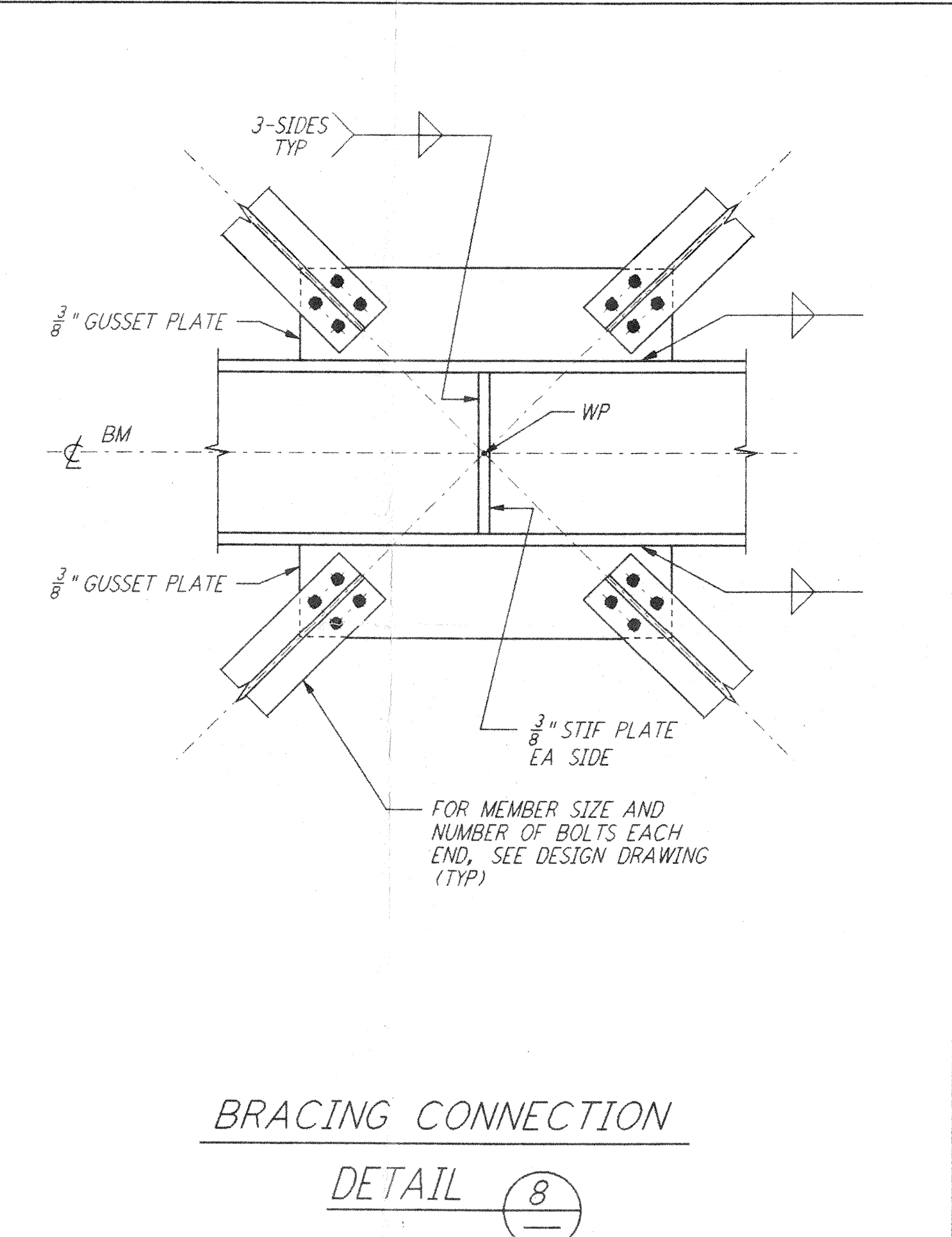
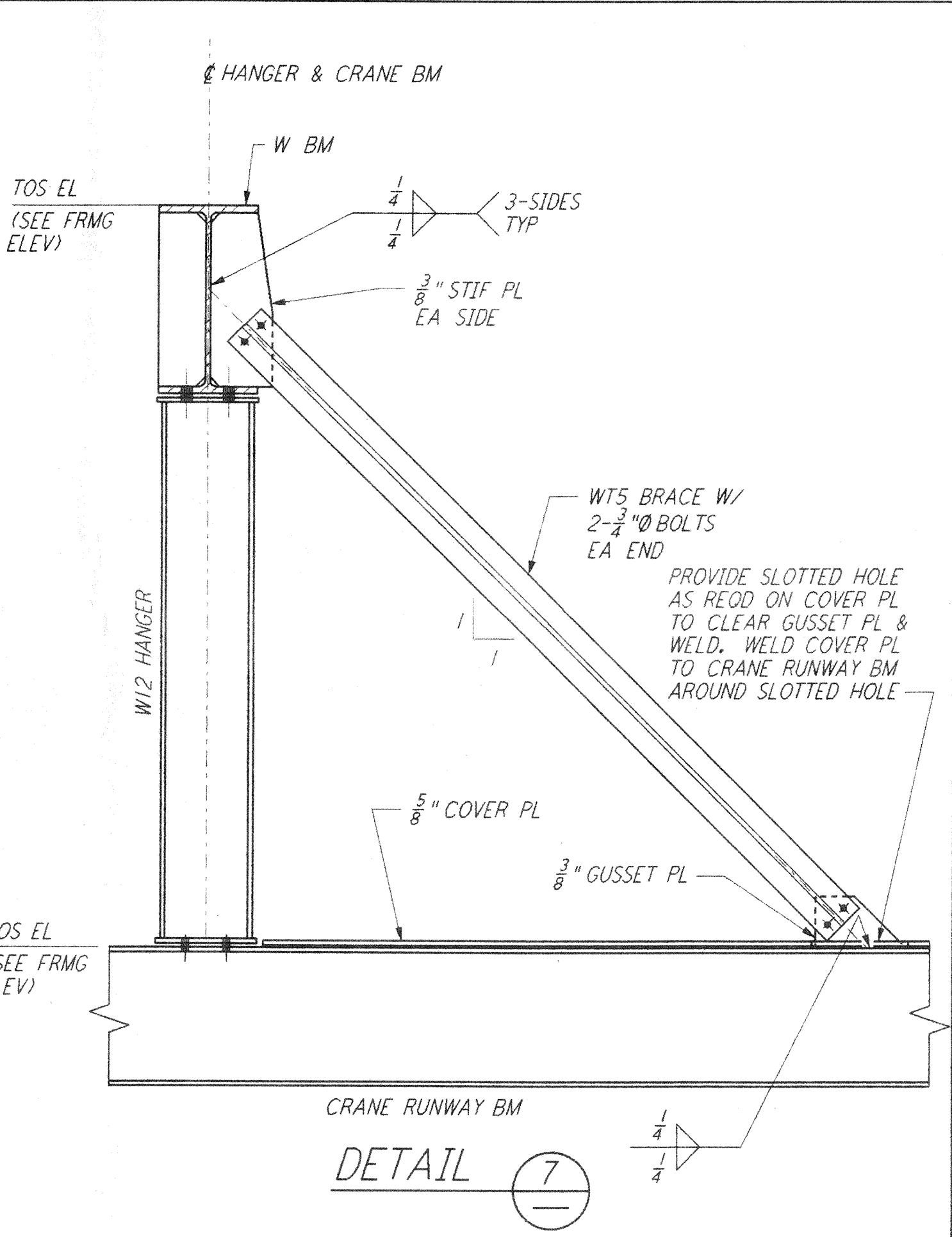
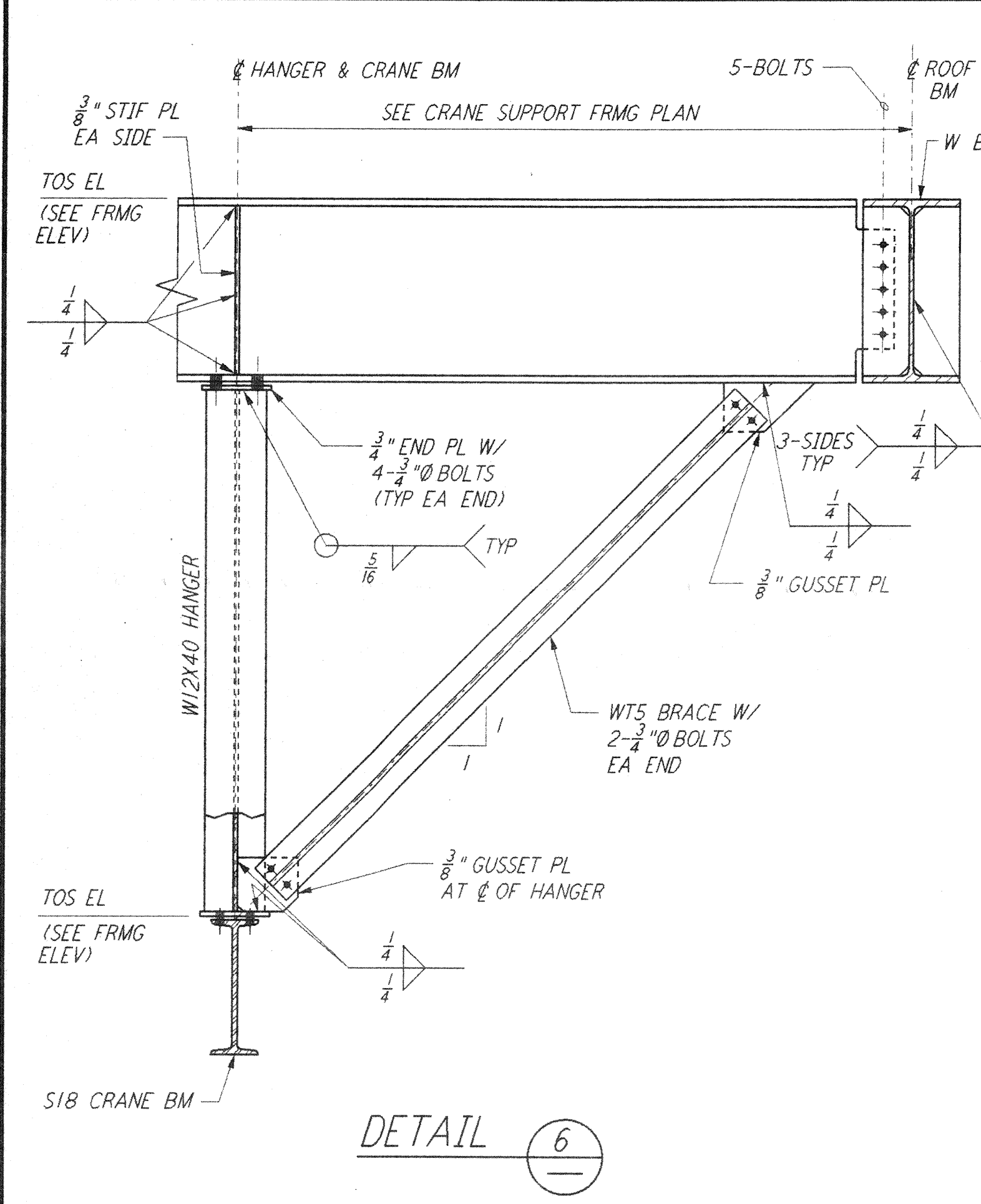
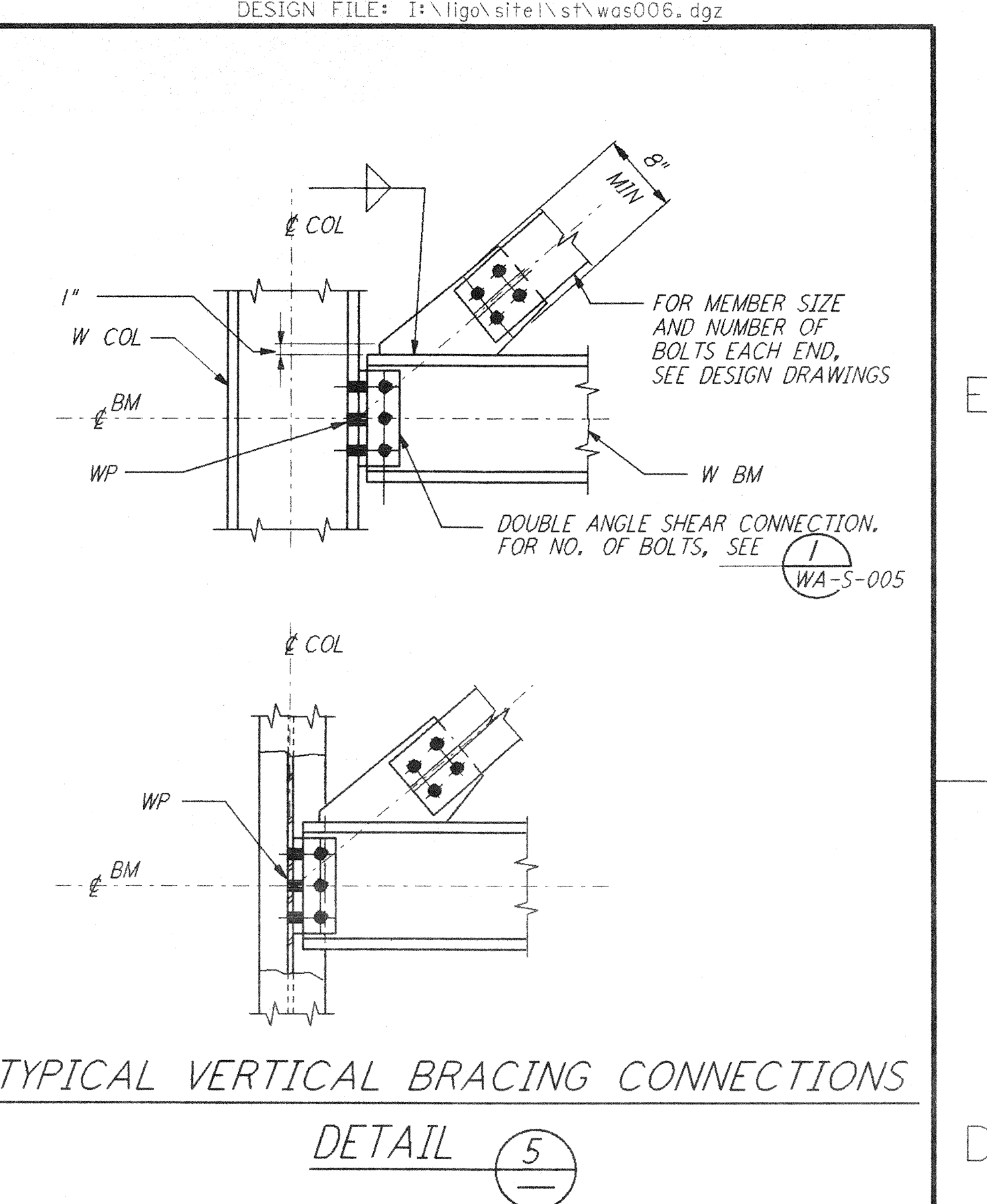
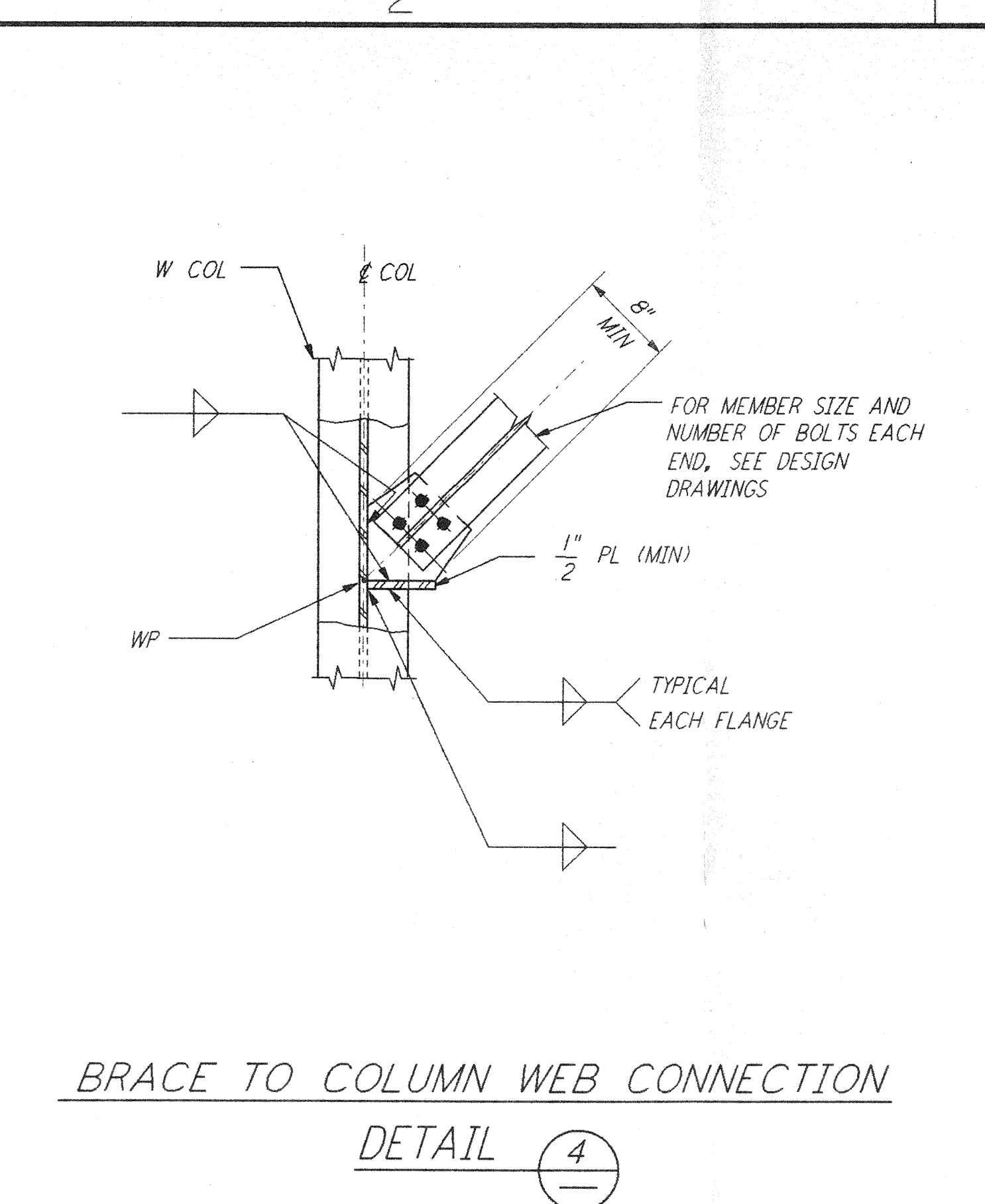
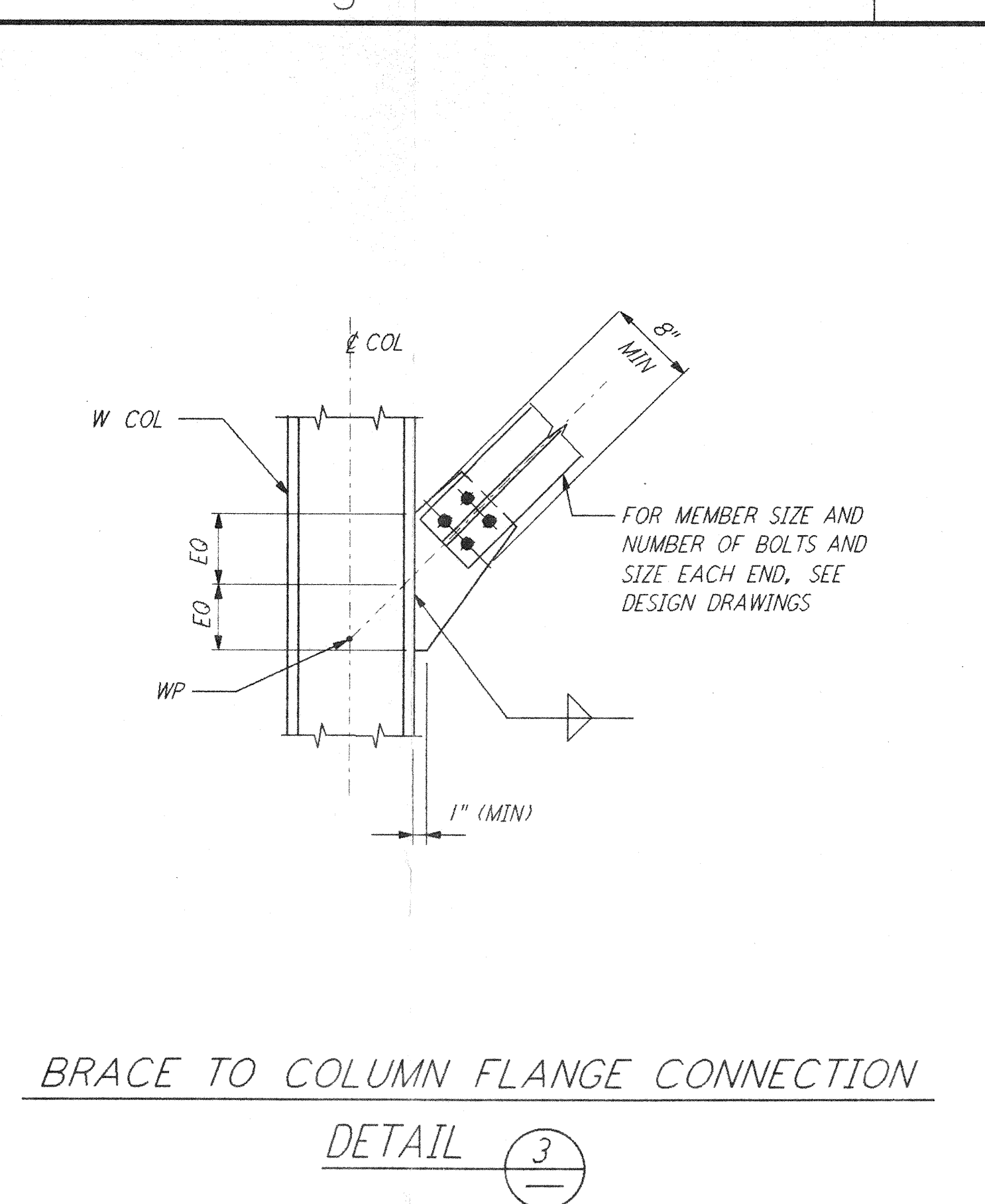
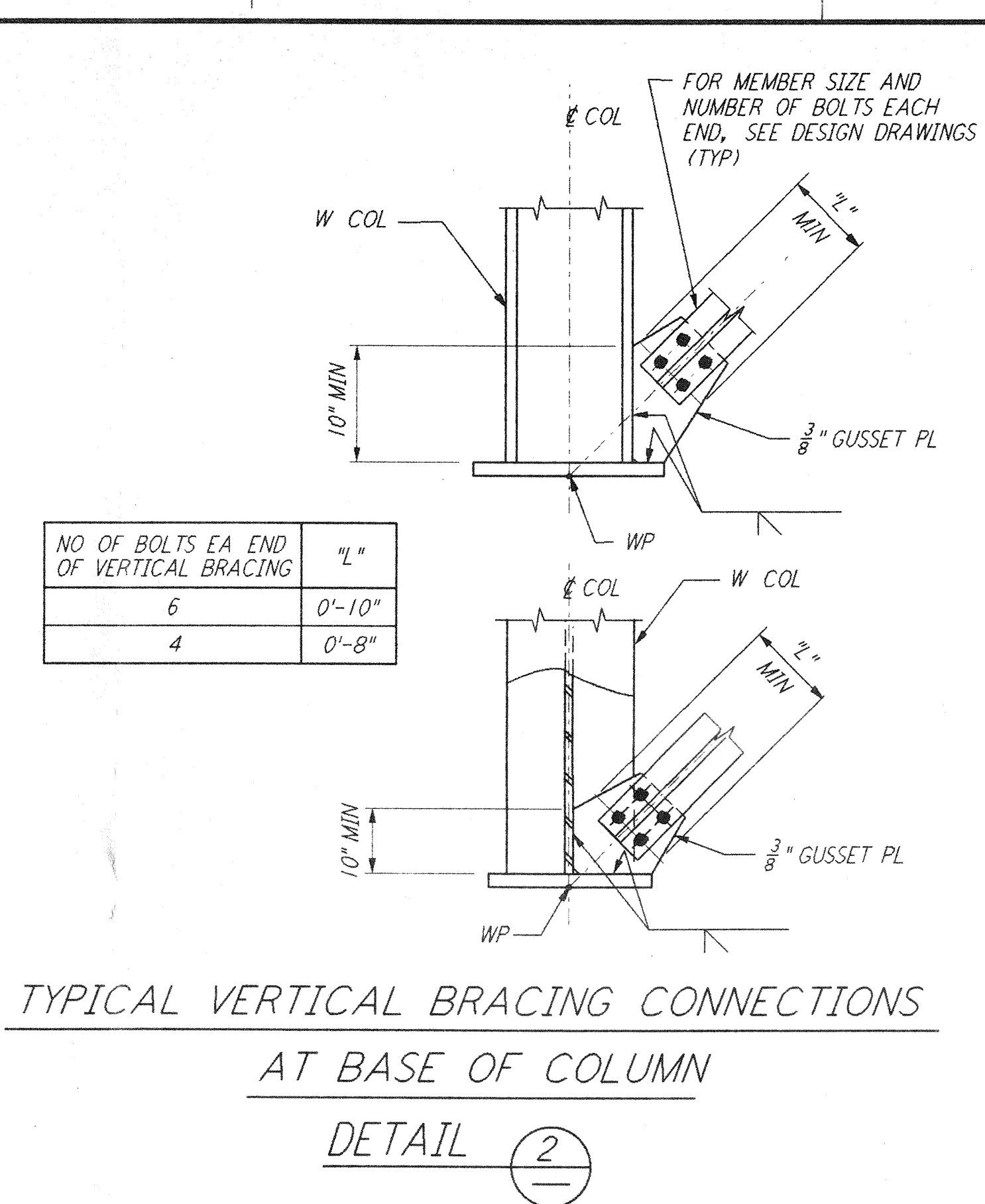
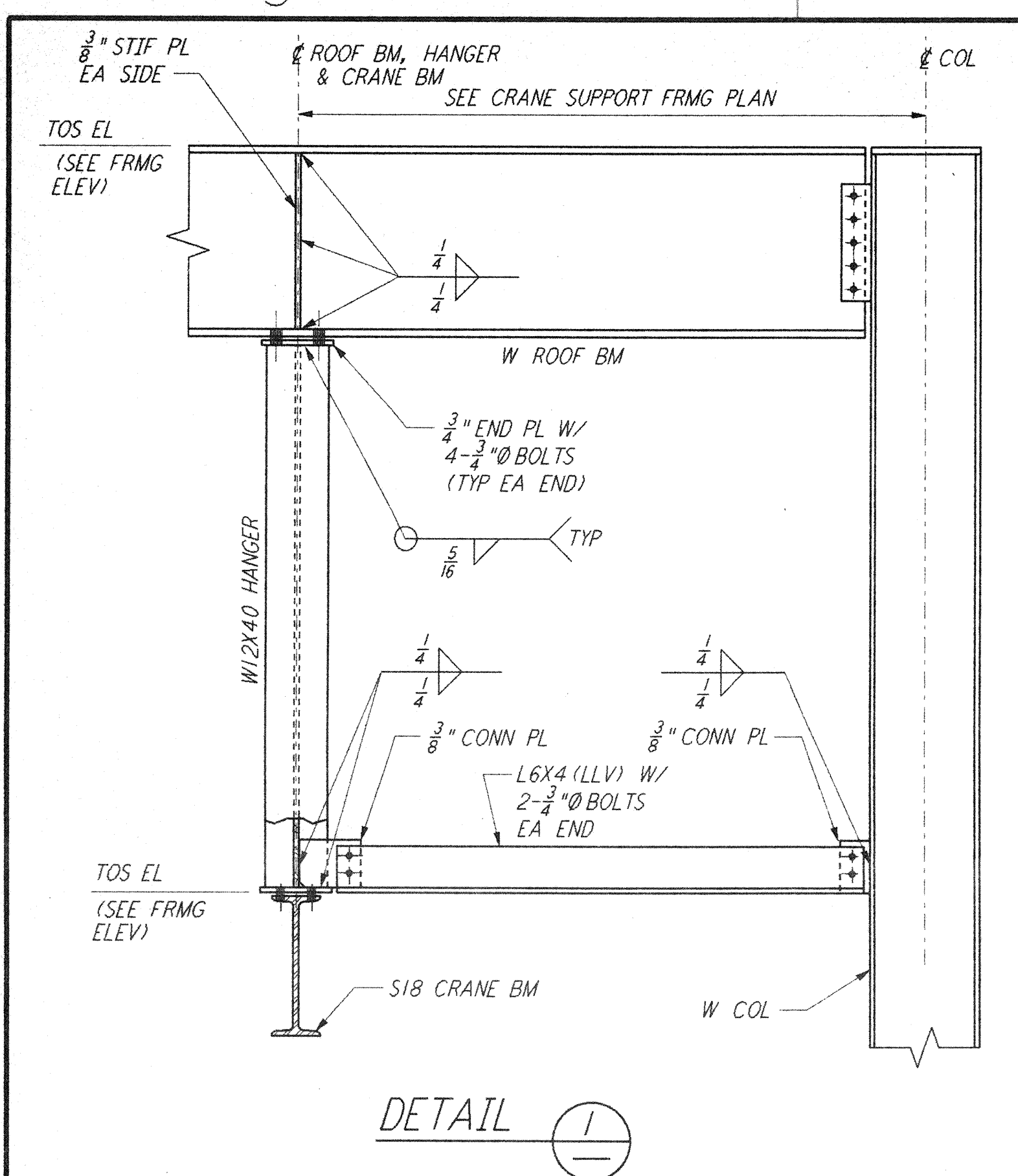


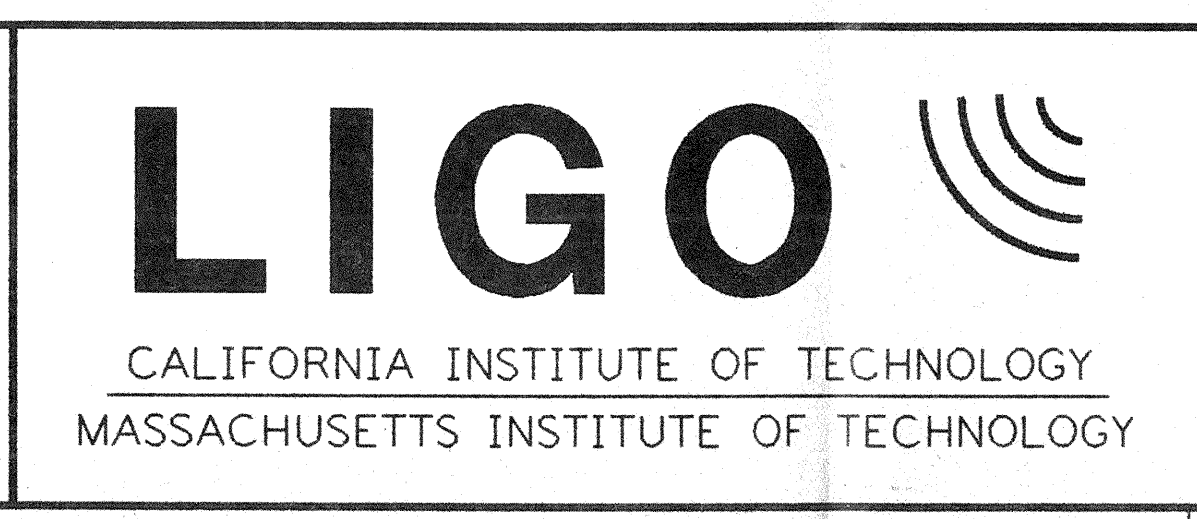
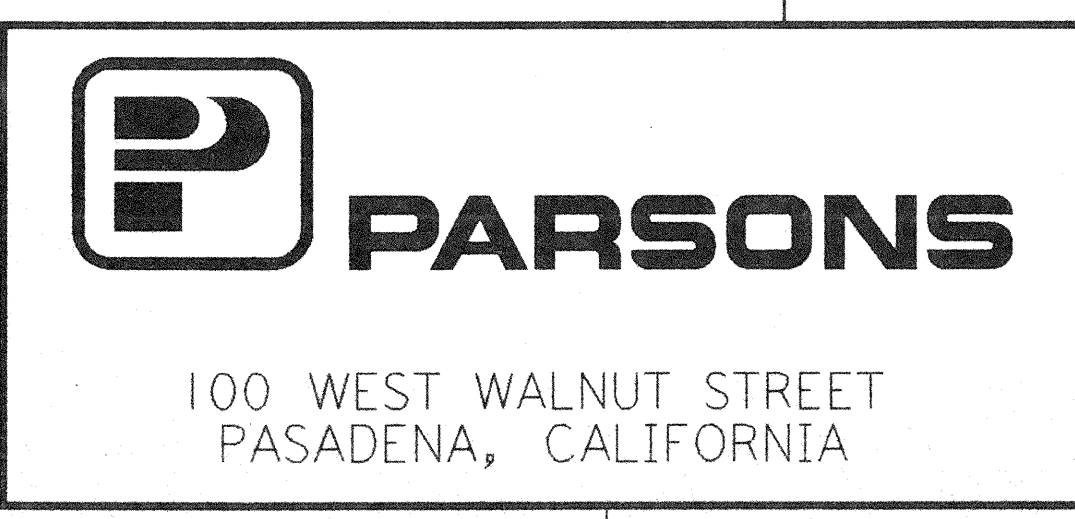
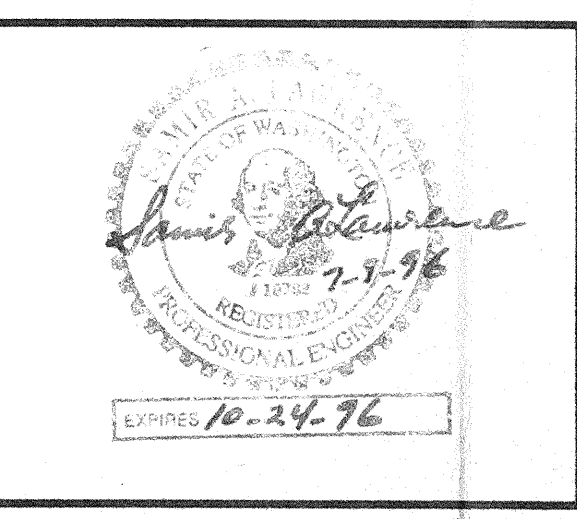
This document and the design it covers are the property of PARSONS. They are loaned only with the borrower's expressed written agreement that they will not be reproduced, copied, loaned, exhibited, or used in any other way, except by written consent from PARSONS to the borrower.



- NOTES:**
- FOR GENERAL NOTES, ABBREVIATIONS AND SYMBOLS, SEE DRAWING S-001.
  - ALL ANGLE VERTICAL BRACING END CONNECTIONS SHALL HAVE TWO BOLTS EACH END UNLESS NOTED OTHERWISE ON THE DESIGN DRAWINGS.

REFERENCES	DESCRIPTION	NO.	DATE	BY	CHKD	ENGR	PROJ	DESCRIPTION

ISSUED FOR CONSTRUCTION			
DRAWN	MCS	6-24-96	
CHECKED	BMW	7-2-96	
ENGINEER	PL	6-28-96	
PROJ	WAF	7/9/96	



LASER INTERFEROMETER GRAVITATIONAL-WAVE OBSERVATORY  
 SITE NO. 1 - HANFORD, WASHINGTON

TITLE	SCALE	CONTRACT NUMBER	PROJECT NUMBER
STRUCTURAL STANDARD STEEL CONNECTION DETAILS SHEET 3	NONE	PP150969	8094
SHEET NUMBER	WA-S-006		REVISIONS

LIGO-D960291-00-0