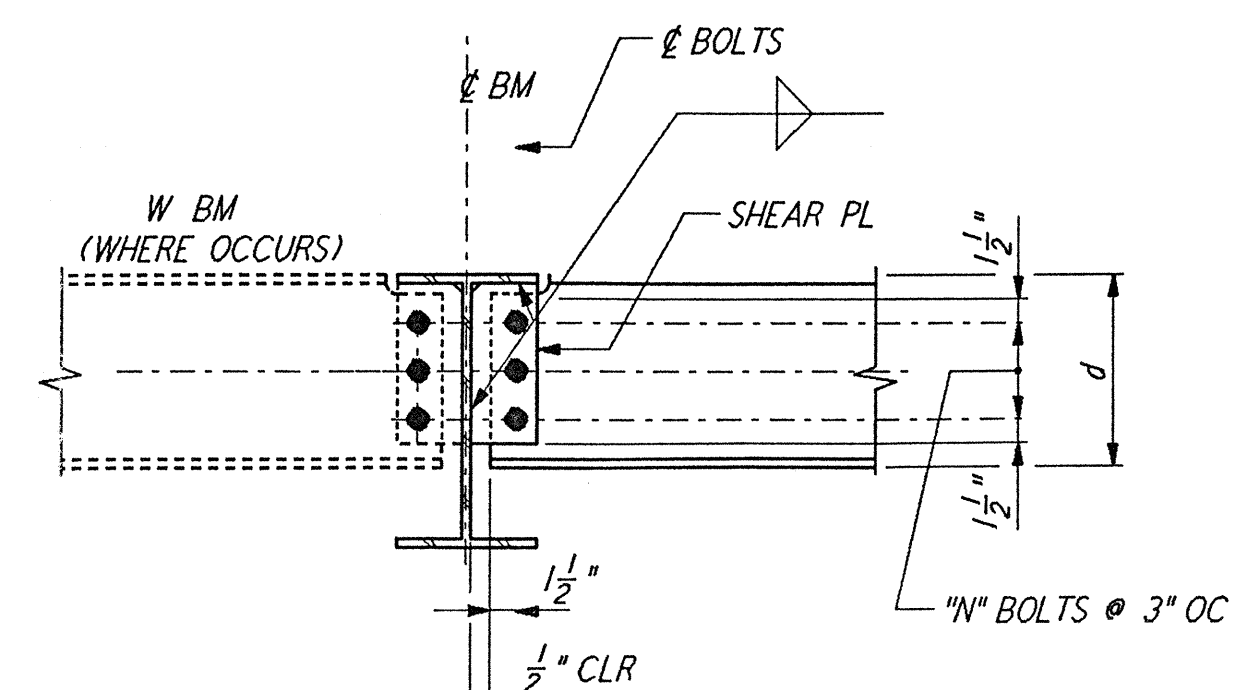


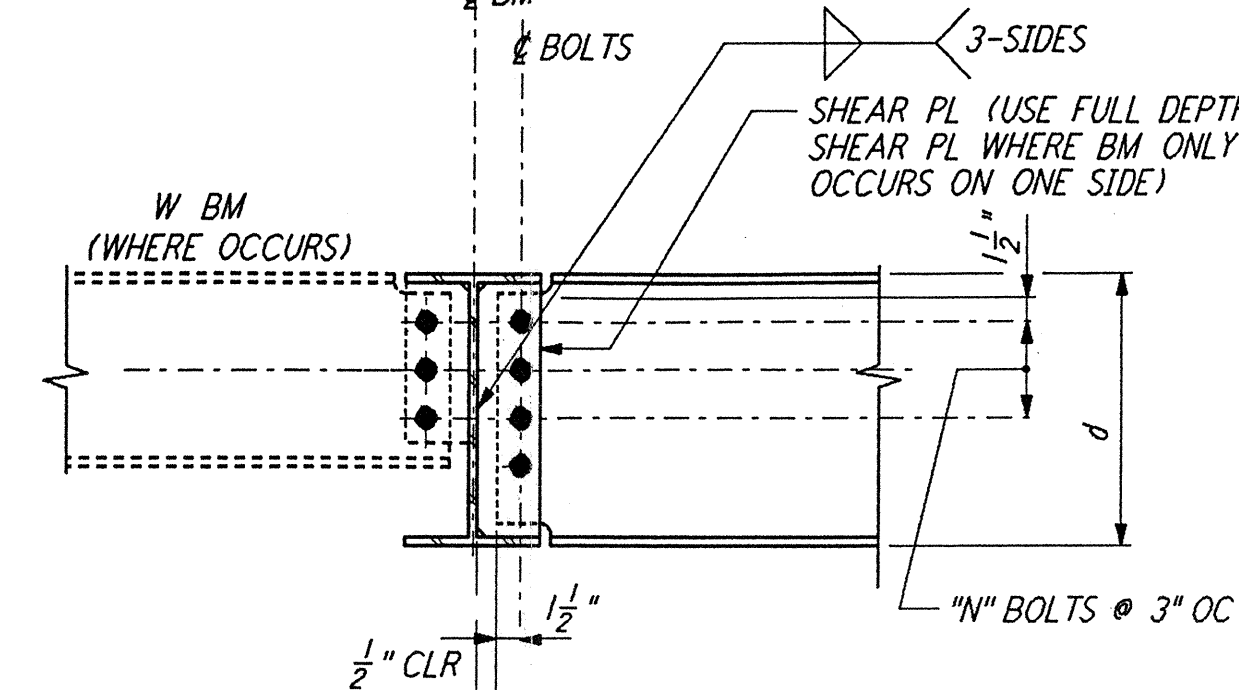
SCHEDULE	
d (IN)	NO OF BOLTS "N" IN BM WEB
4, 5, 6	2
8, 10	2
12, 14	3
16, 18	4
21, 24, 27	5
30, 33, 36	6

DOUBLE ANGLE SHEAR CONNECTIONS
 DETAIL (1)



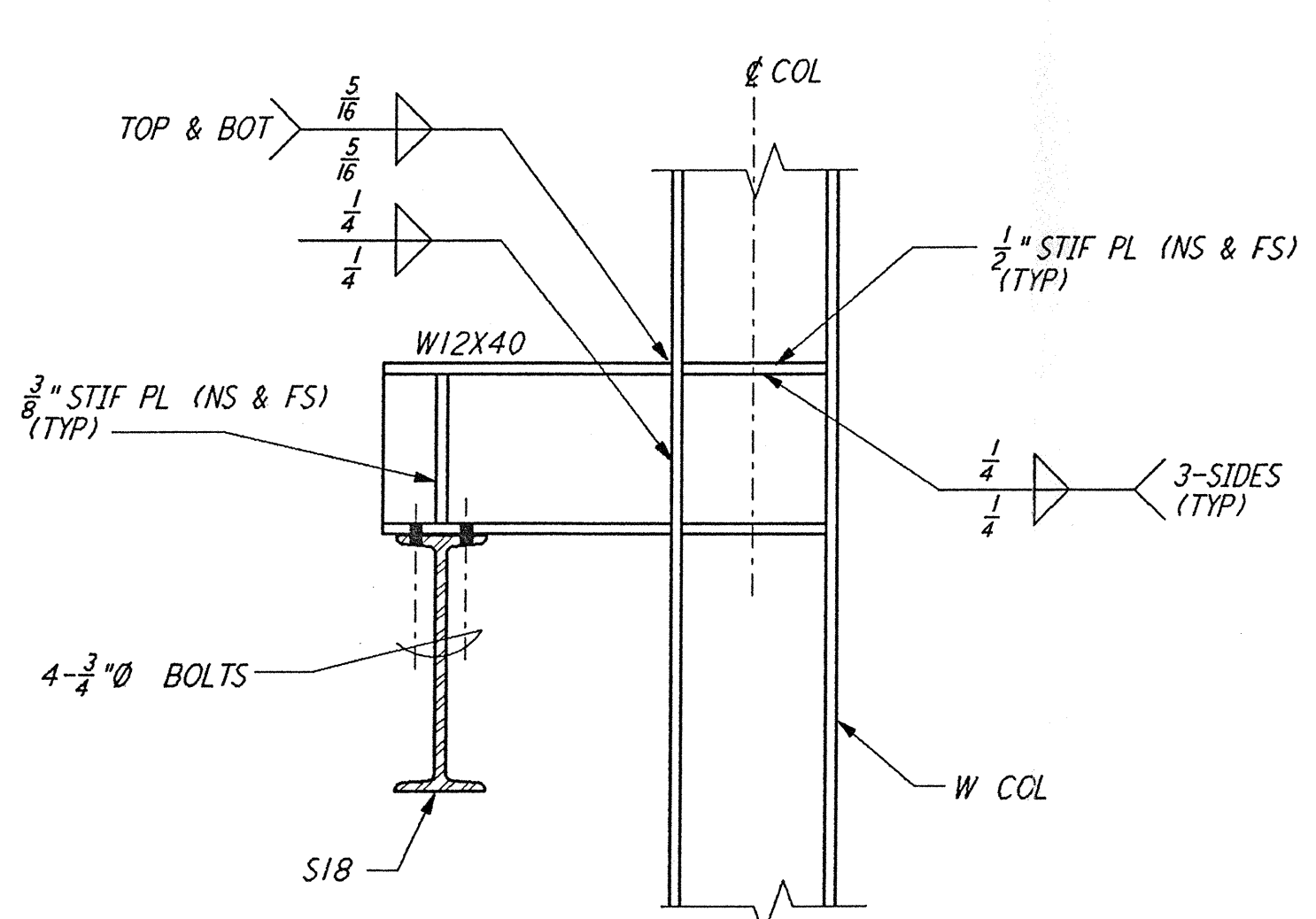
BOLTING SCHEDULE	
BEAM DEPTH d (INCHES)	NO OF BOLTS "N"
8, 10	2
12, 14	3
16, 18	4

ROOF PURLIN CONNECTION
 DETAIL (2)

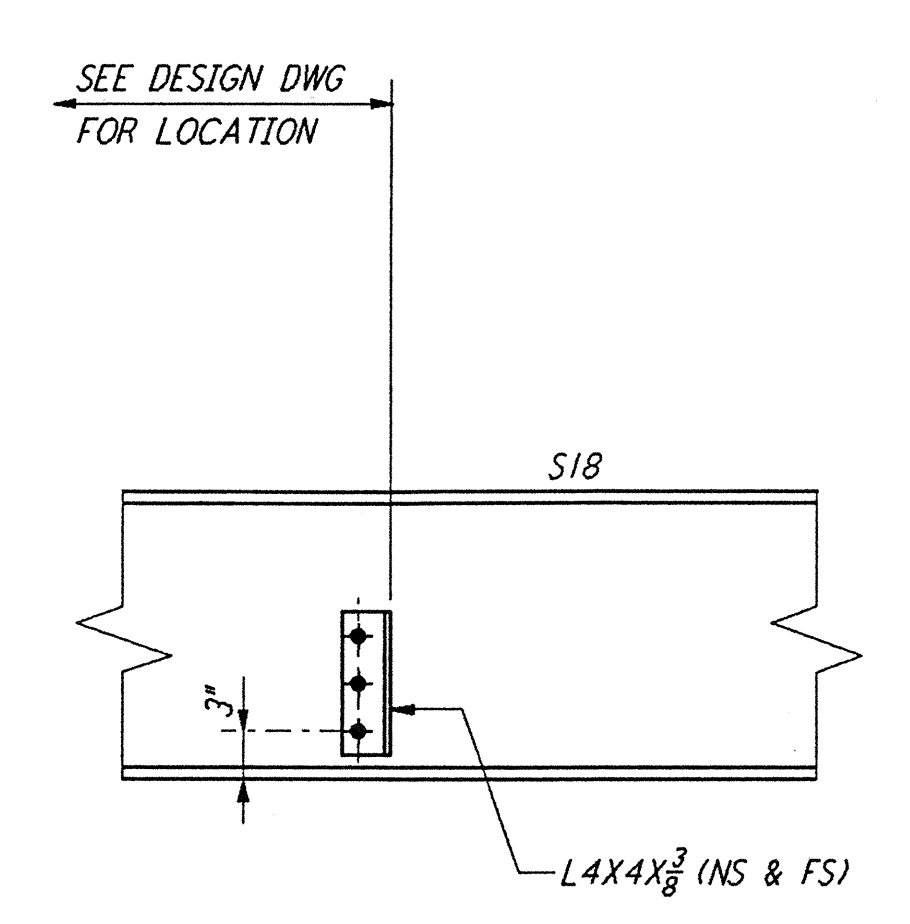


BOLTING SCHEDULE	
BEAM DEPTH d (INCHES)	NO OF BOLTS "N"
8, 10	2
12, 14	3
16, 18	4
21, 24, 27	5
30, 33, 36	6

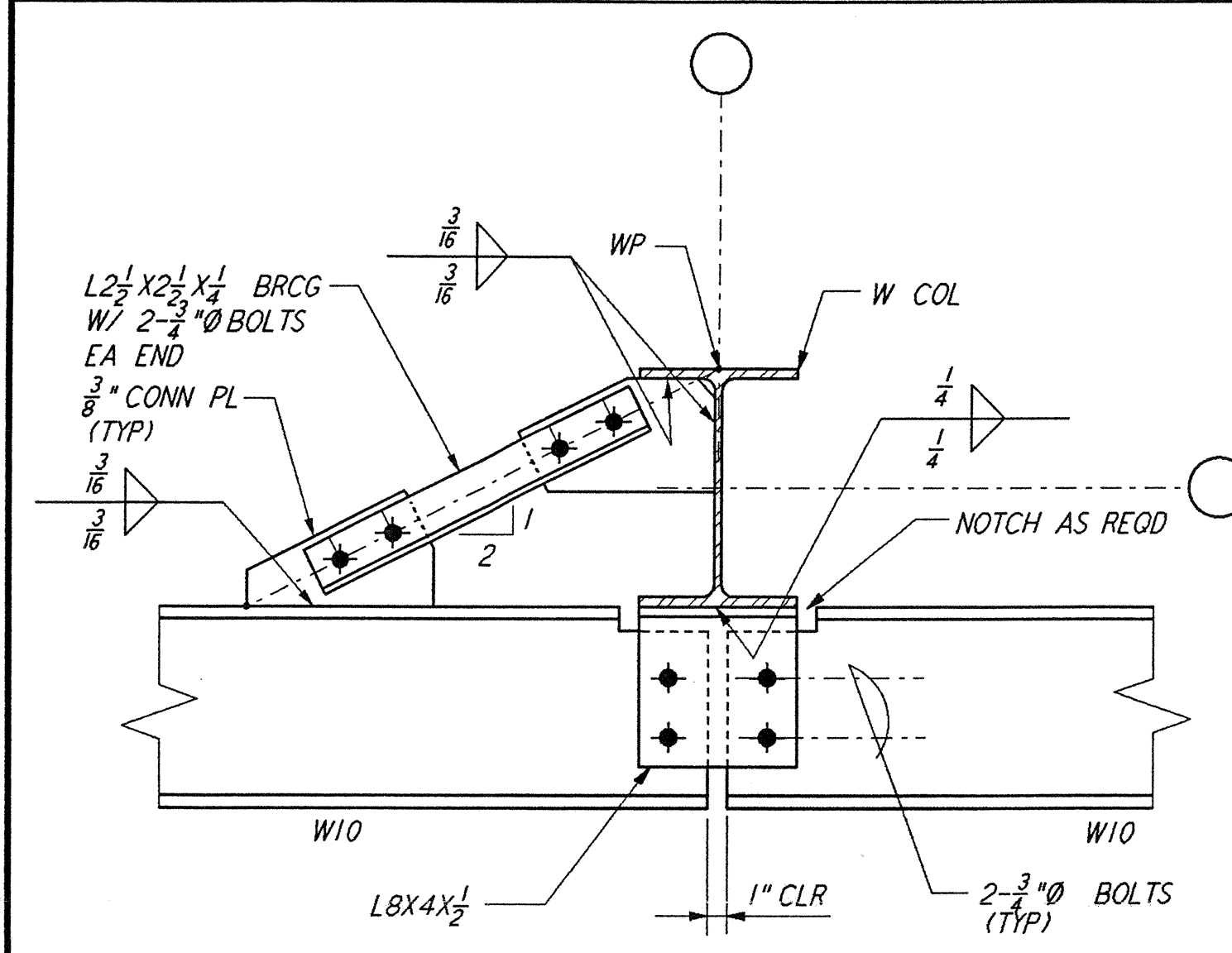
BEAM TO BEAM CONNECTION
 DETAIL (3)



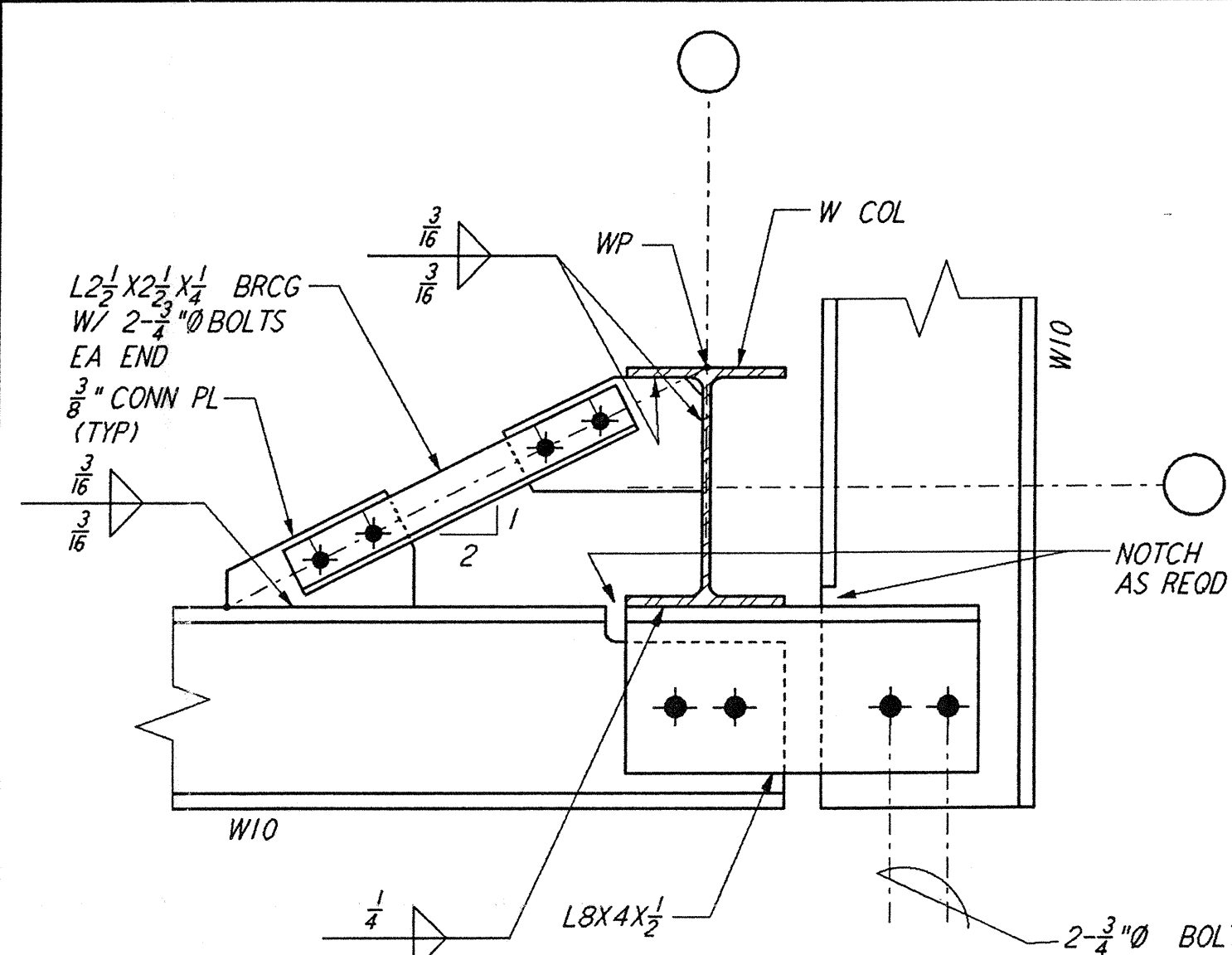
CRANE RUNWAY BEAM CONNECTION
 DETAIL (4)



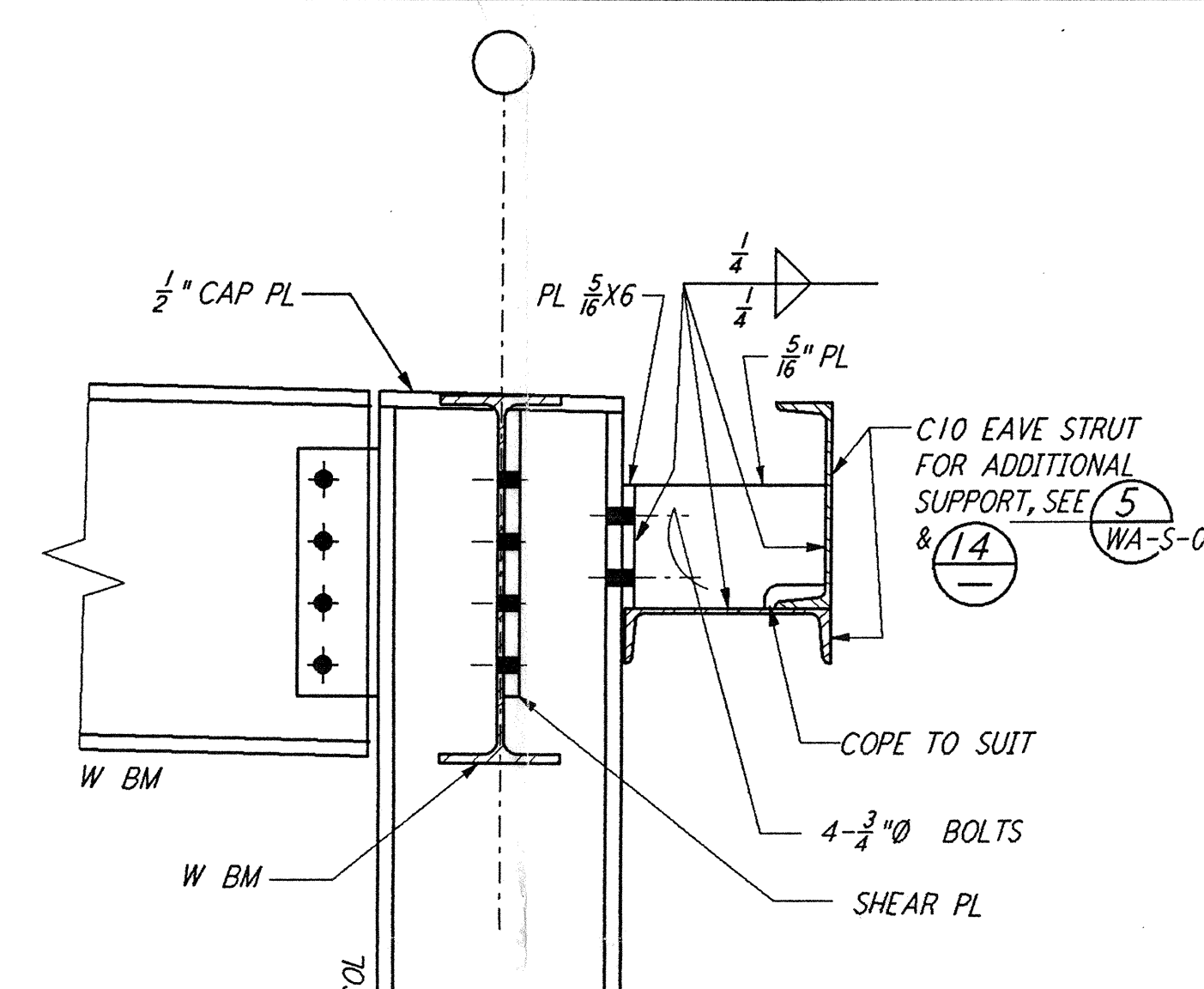
CRANE RUNWAY STOP DETAIL
 DETAIL (5)



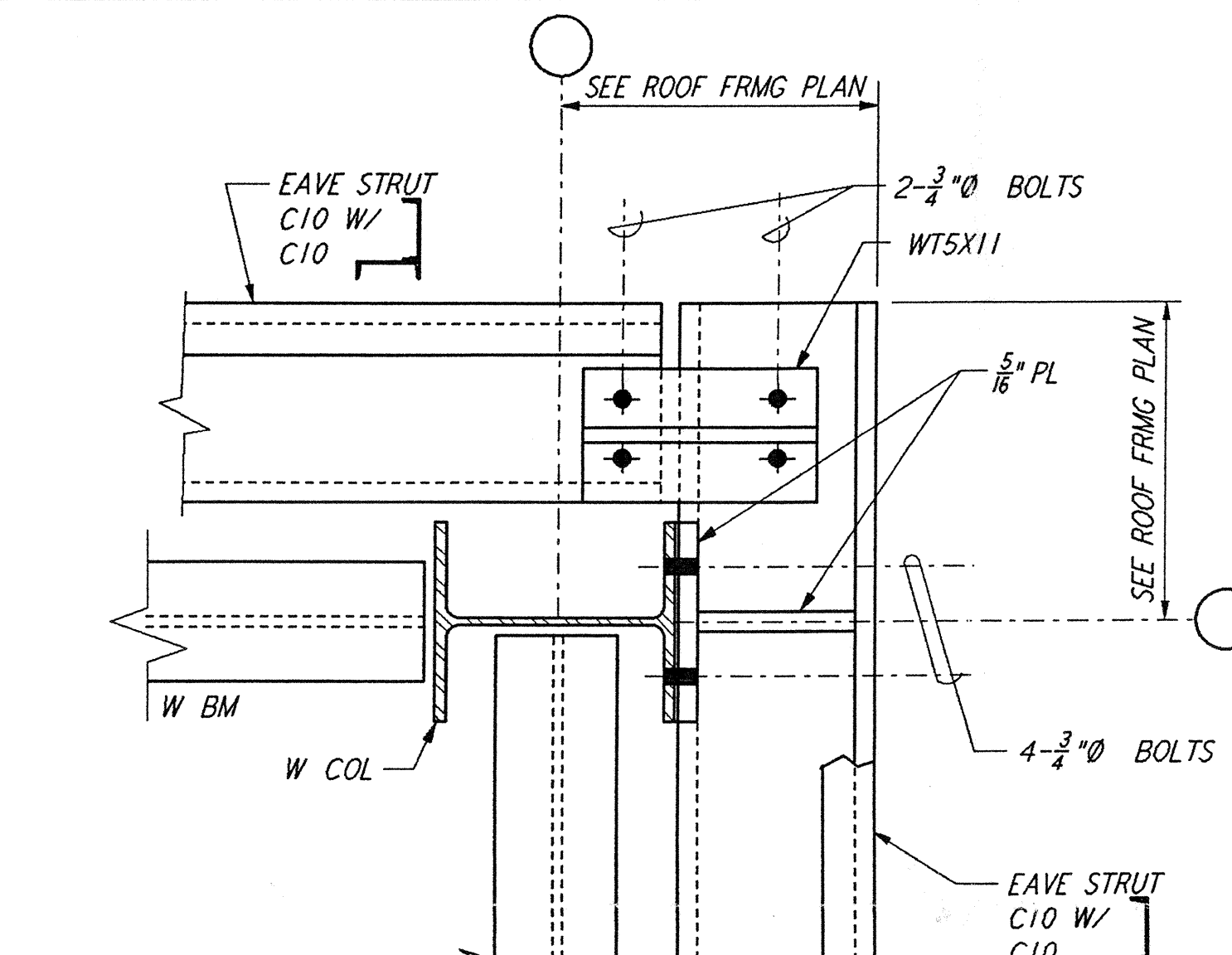
GIRT CONNECTION
 DETAIL (6)



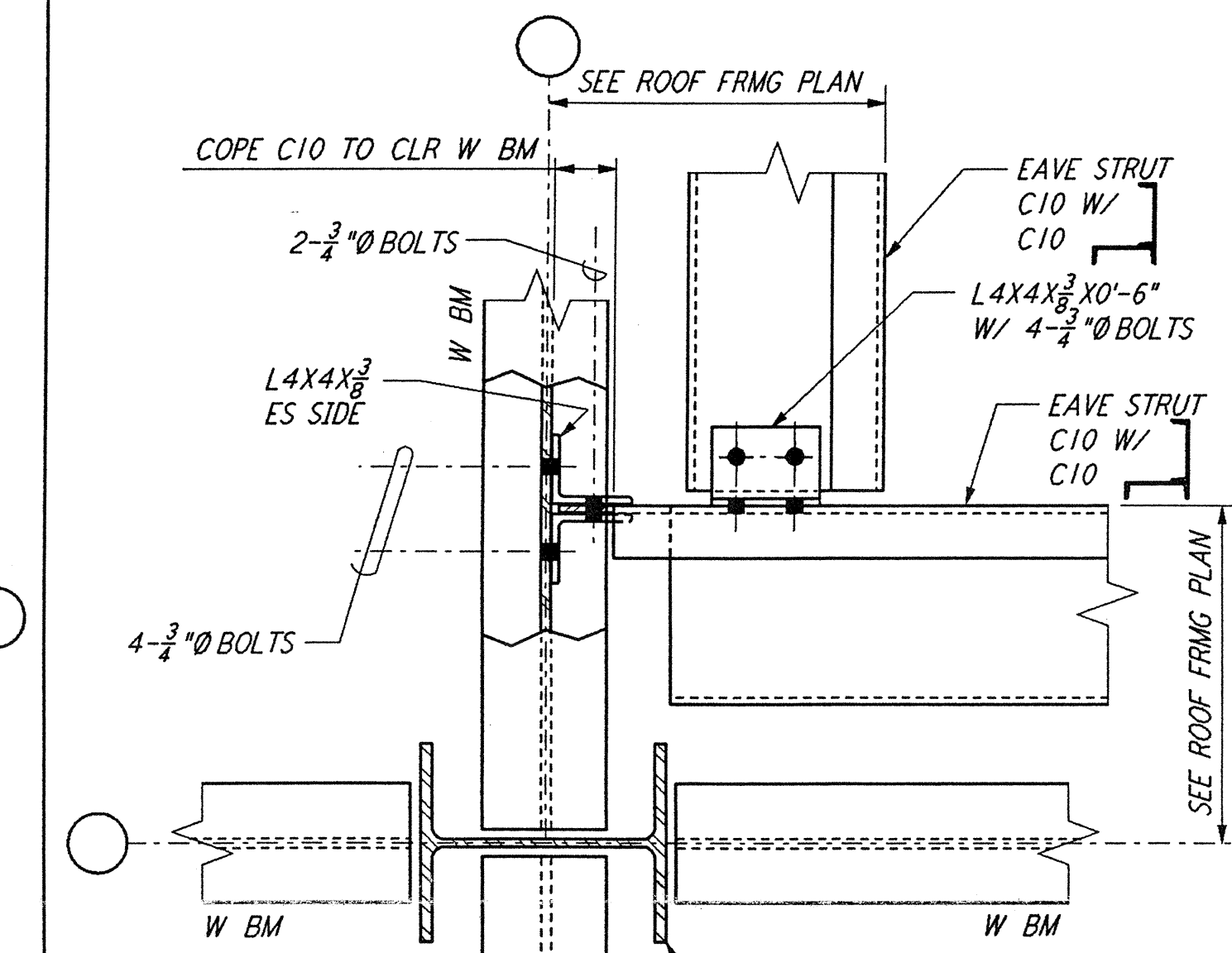
GIRT CONNECTION AT CORNER
 DETAIL (7)



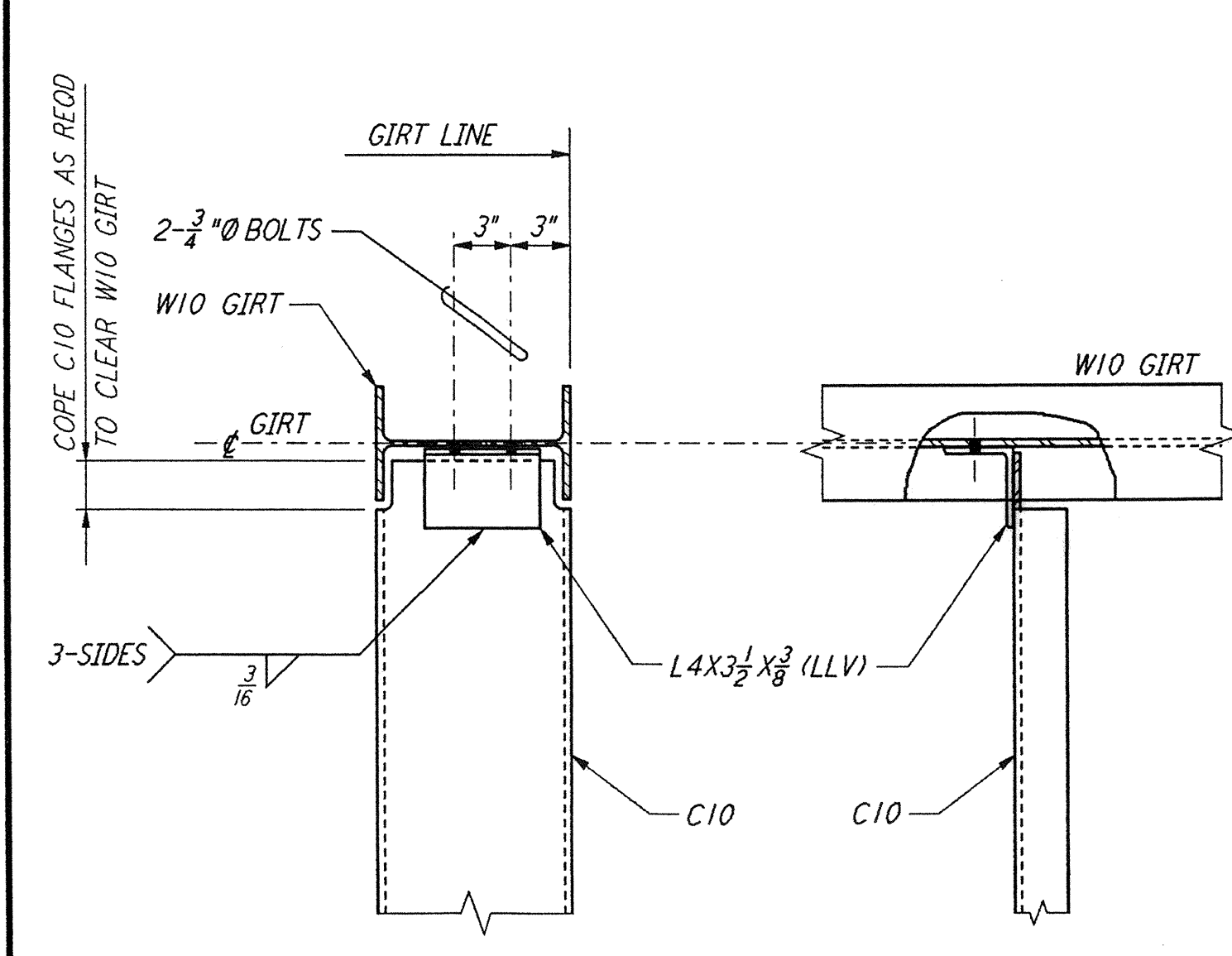
EAVE STRUT CONNECTION
 DETAIL (8)



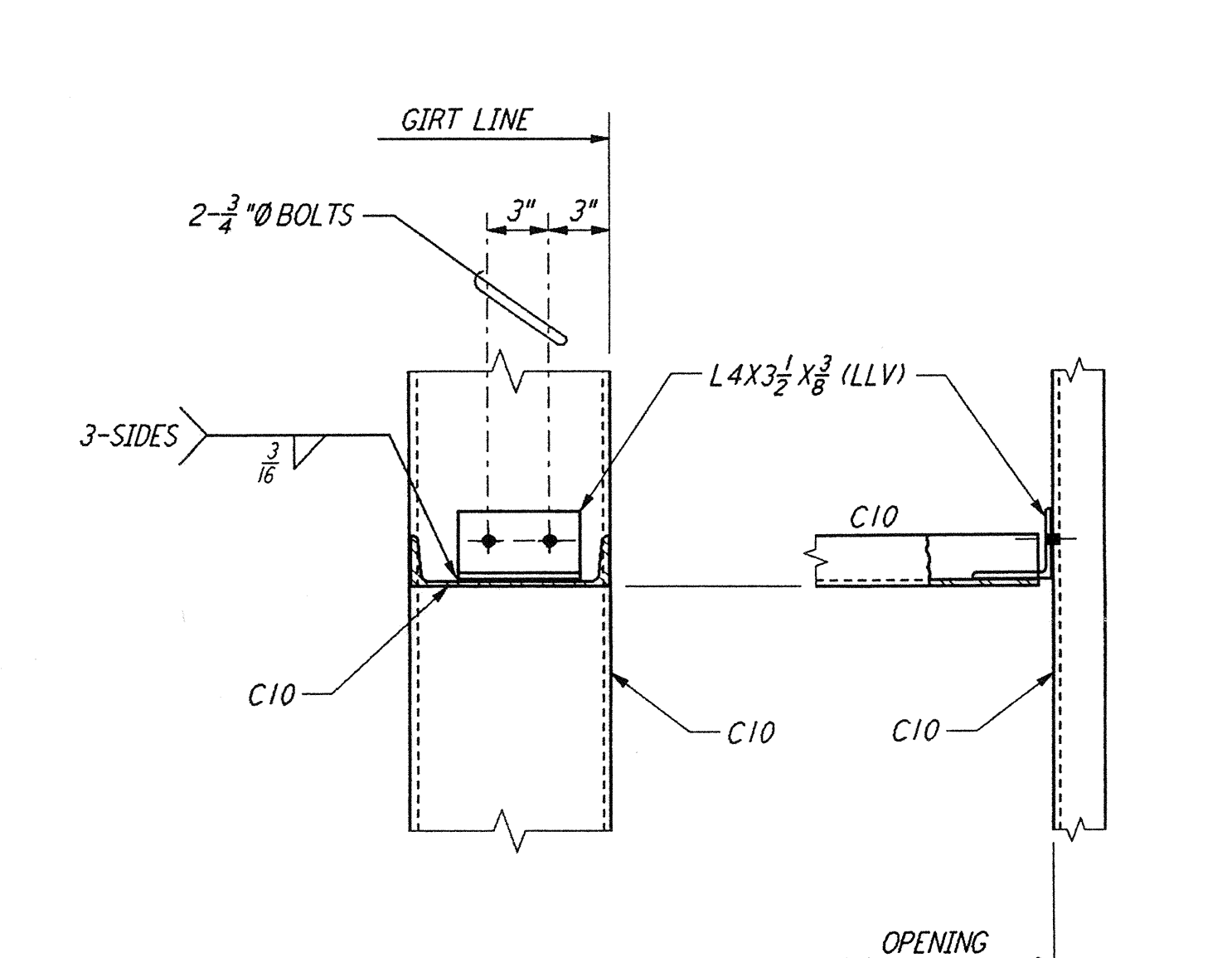
EAVE STRUT CONNECTION AT CORNER
 DETAIL (9)



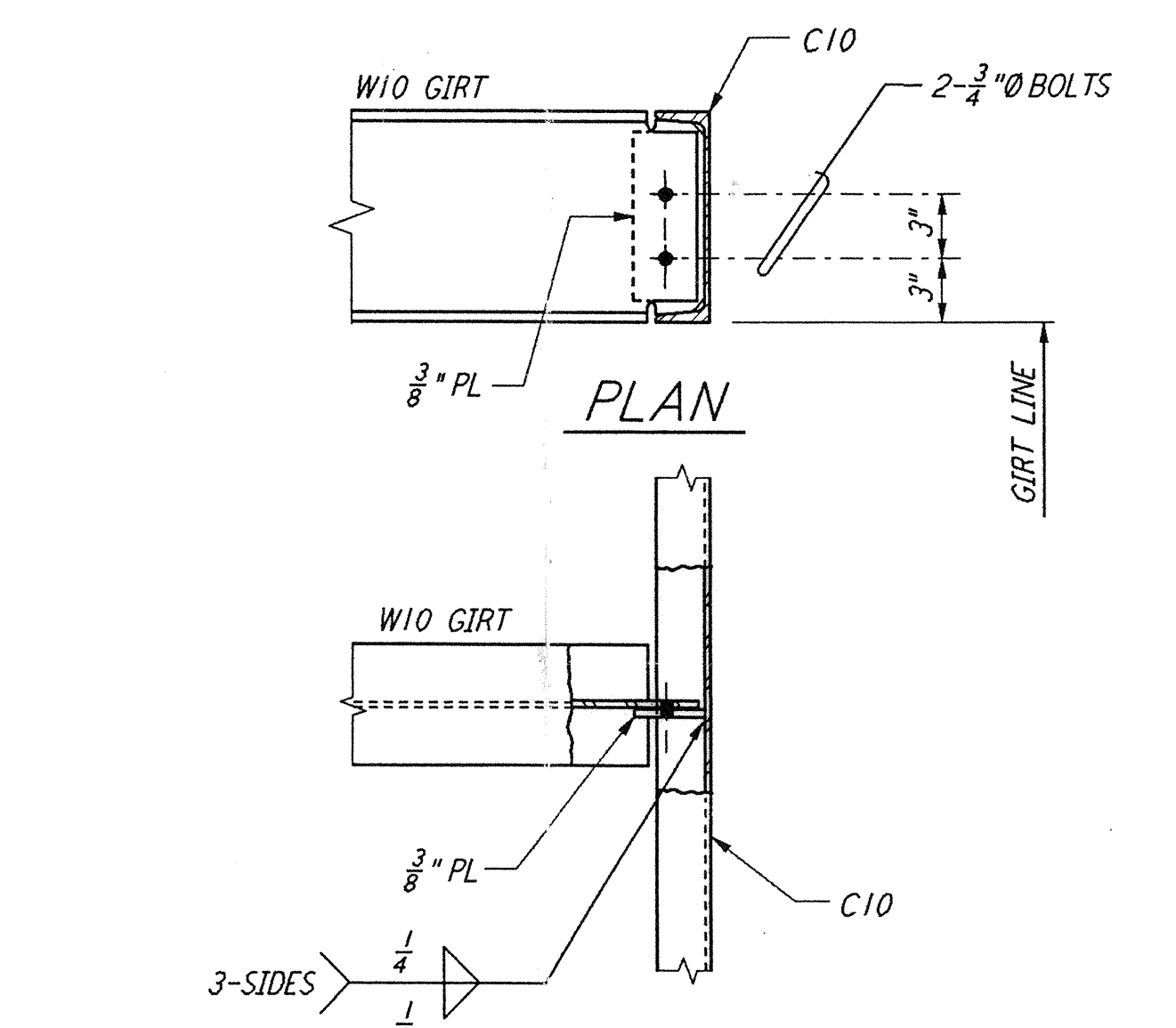
EAVE STRUT CONNECTION AT CORNER
 DETAIL (10)



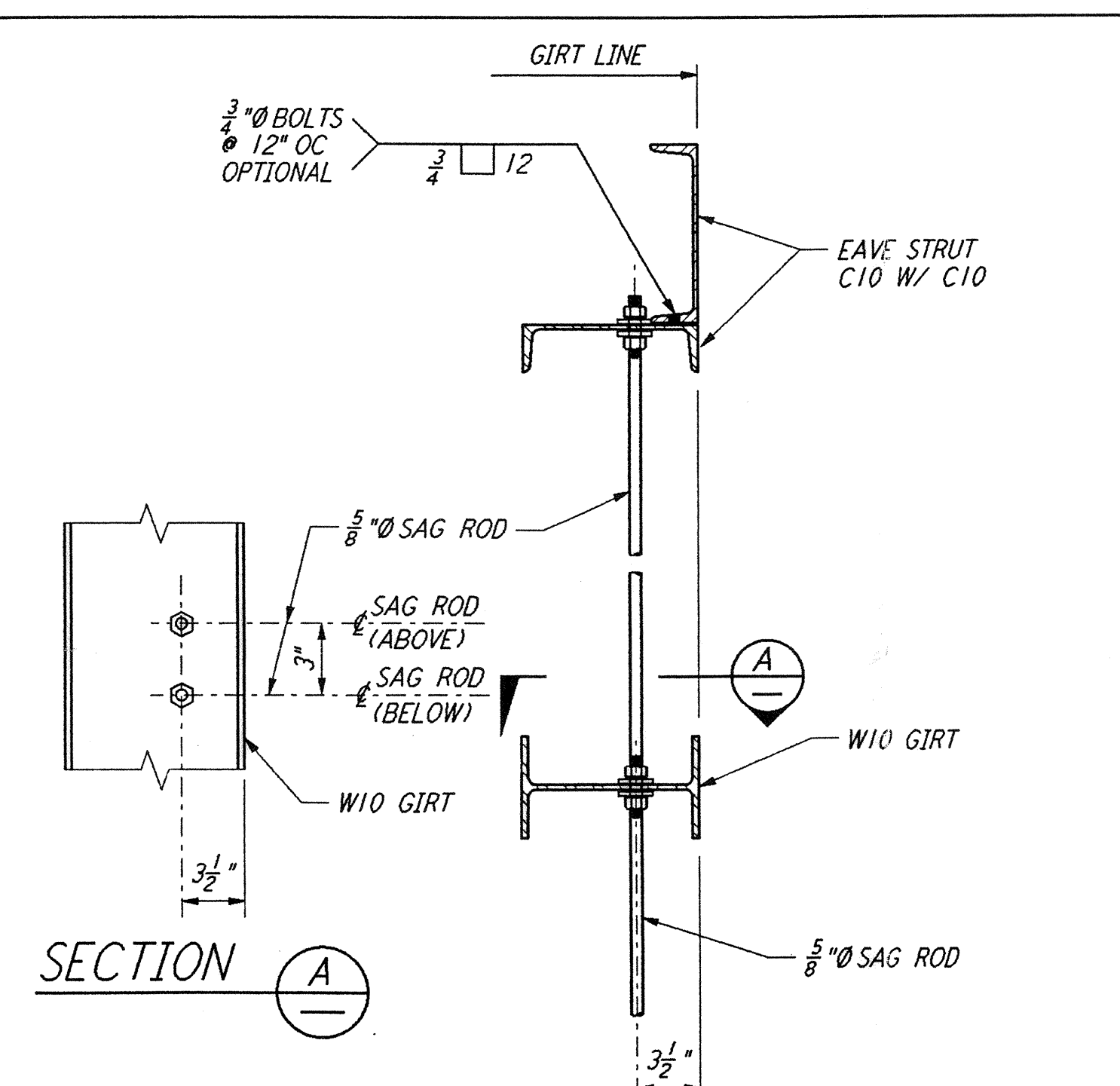
CHANNEL TO GIRT CONNECTION
 DETAIL (11)



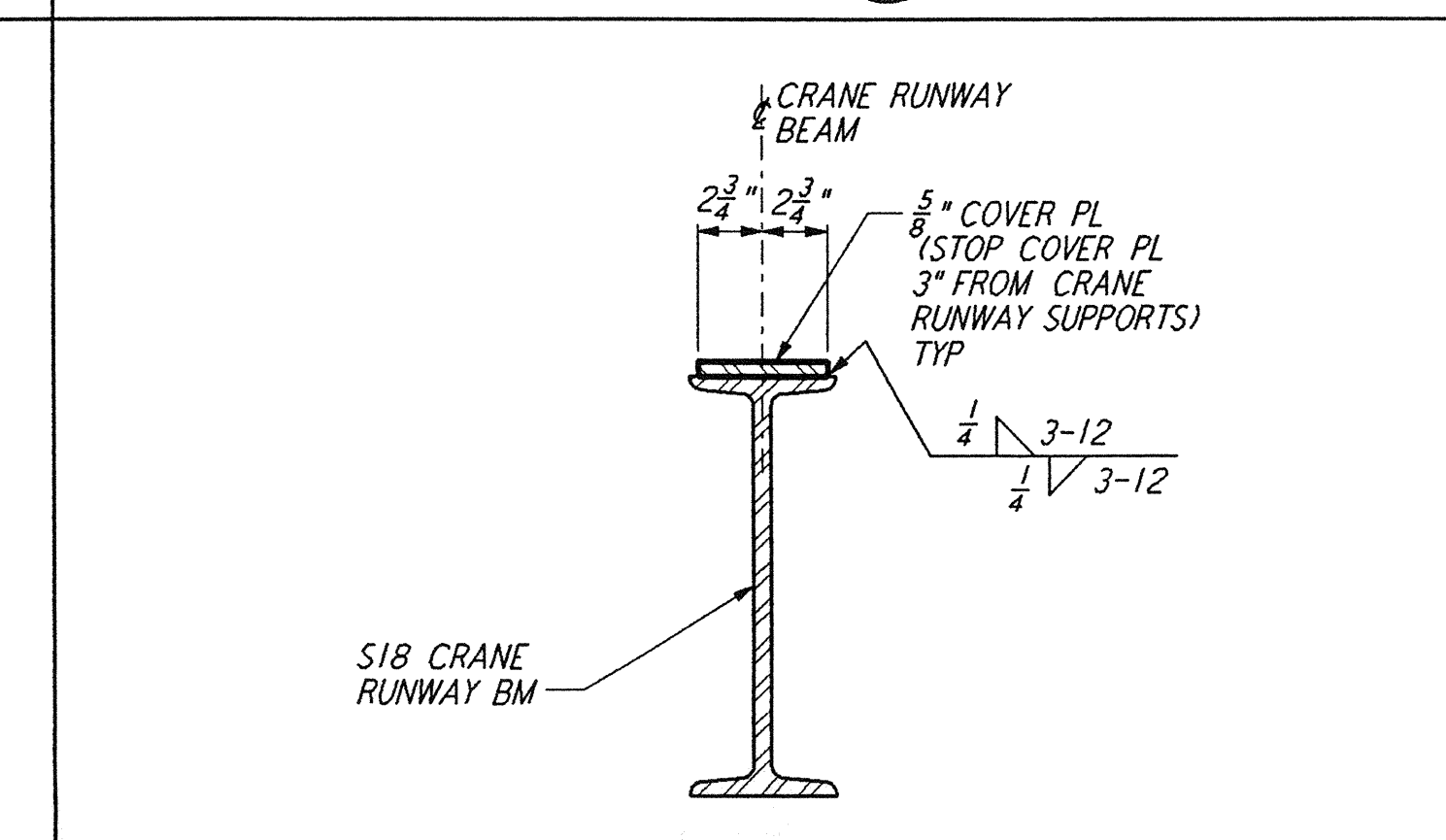
CHANNEL TO CHANNEL CONNECTION
 DETAIL (12)



GIRT TO CHANNEL CONNECTION
 DETAIL (13)



SAG RODS TO GIRTS CONNECTION
 DETAIL (14)



CRANE RUNWAY BEAM
 DETAIL (15)

NOTES:
 1. FOR GENERAL NOTES, ABBREVIATIONS AND SYMBOLS, SEE DRAWING S-001.

NO.	DATE	BY	CHKD	ENGR	PROJ	DESCRIPTION
B	4-19-96	MCS	bar	PL	TDM	FINAL DESIGN REVIEW & BID
A	10-31-95					PRELIMINARY DESIGN REVIEW

REFERENCES	REVISIONS	NO.	DATE	BY	CHKD	ENGR	PROJ	DESCRIPTION

DRAWN	MCS
CHECKED	
ENGINEER	
PROJ	

PARSONS
 100 WEST WALNUT STREET
 PASADENA, CALIFORNIA

LIGO
 CALIFORNIA INSTITUTE OF TECHNOLOGY
 MASSACHUSETTS INSTITUTE OF TECHNOLOGY

LASER INTERFEROMETER
 GRAVITATIONAL-WAVE OBSERVATORY
 SITE NO. 1 - HANFORD, WASHINGTON

TITLE	STRUCTURAL STANDARD	SHEET NUMBER	NONE	CONTRACT NUMBER	PP150969	PROJECT NUMBER	8094
	STRUCTURAL STEEL CONNECTION DETAILS SHEET 2				WA-S-005		

This document and the design it covers are the property of PARSONS. They are loaned only with the borrower's expressed written agreement that they will not be reproduced, copied, loaned, exhibited, or used in any other way, except by written consent from PARSONS to the borrower.

E
D
C
B
A