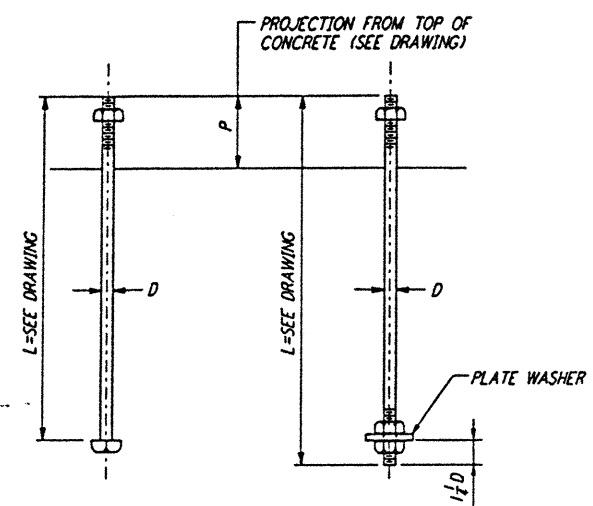


NOTES:

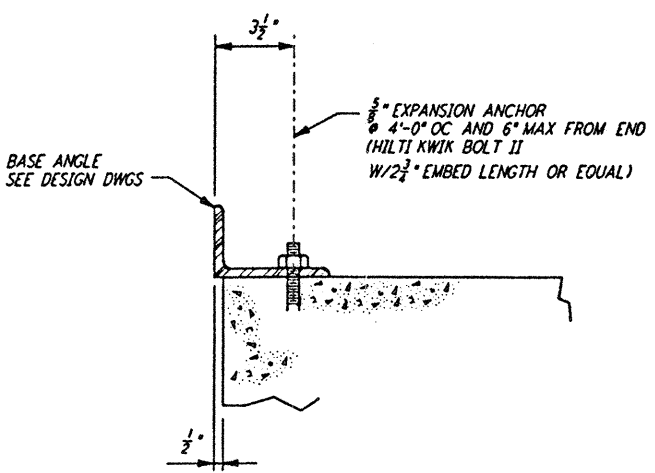
1. BOLT MATERIAL SHALL BE IN ACCORDANCE WITH ASTM A307, UNLESS OTHERWISE SPECIFIED.
2. USE UNIFIED NATIONAL COARSE THREAD, CLASS 2 FIT.
3. USE HEAVY DOUBLE CHAMFER HEX NUTS UP TO 1", AND HEAVY FLAT FACE HEX NUTS LARGER THAN 1".
4. PROVIDE 1 HEX NUT FOR EACH BOLT, UNLESS OTHERWISE NOTED ON DESIGN DRAWINGS.
5. PLATE WASHER MATERIAL SHALL BE ASTM A36, UNLESS OTHERWISE NOTED.
6. FABRICATOR SHALL BUNDLE AND TAG BOLTS BY INDIVIDUAL FOUNDATIONS OR MEMBERS. TAGS SHALL BE WEATHER RESISTANT, WITH MARKS AT LEAST 1/2" HIGH, AND FIRMLY WIRED TO BUNDLES.
7. SLEEVES SHALL NOT BE USED UNLESS SPECIFIED ON THE DESIGN DRAWINGS.

ANCHOR BOLT SCHEDULE

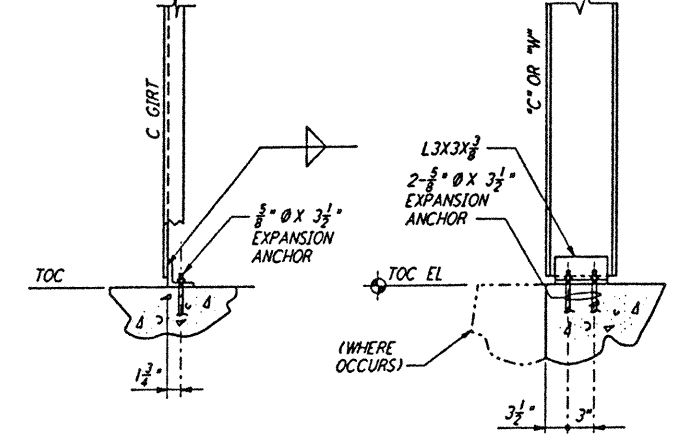
DIA D	PLATE WASHER	SLEEVE IF REQD		THREAD LENGTH	DIA D
		DIA	LENGTH		
1/2"		2"	5"	1 1/2"	1/2"
3/8"		2"	5"	2 1/2"	3/8"
3/4"		2"	7"	2 1/2"	3/4"
1"		2"	7"	2 1/2"	1"
1 1/8"	2 1/2" X 2 1/2" X 3/8"	3"	10"	3 1/2"	1 1/8"
1 1/4"	3" X 3" X 1/2"	3"	10"	3 3/8"	1 1/4"
1 1/2"	3 1/2" X 3 1/2" X 1/2"	3"	10"	4"	1 1/2"
1 3/8"	3 1/2" X 3 1/2" X 1/2"	4"	15"	4 1/8"	1 3/8"
1 1/2"	3 1/2" X 3 1/2" X 3/8"	4"	15"	4 1/2"	1 1/2"



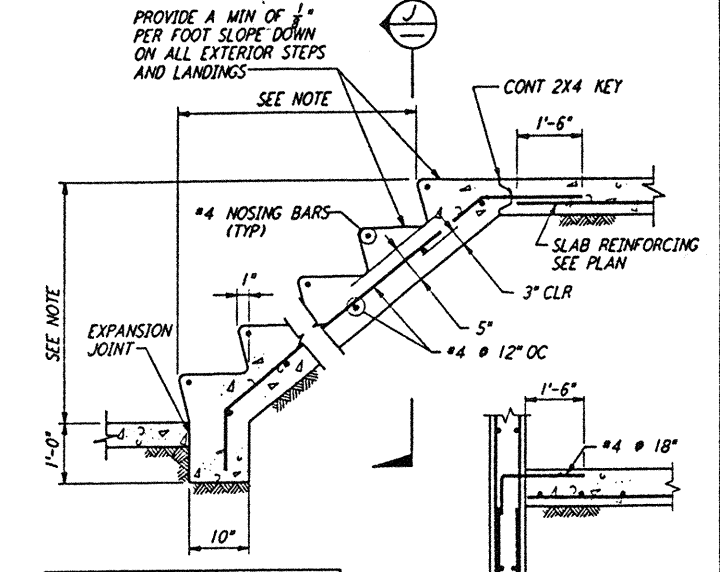
TYPE 1 TYPE 2 ANCHOR BOLTS DETAILS



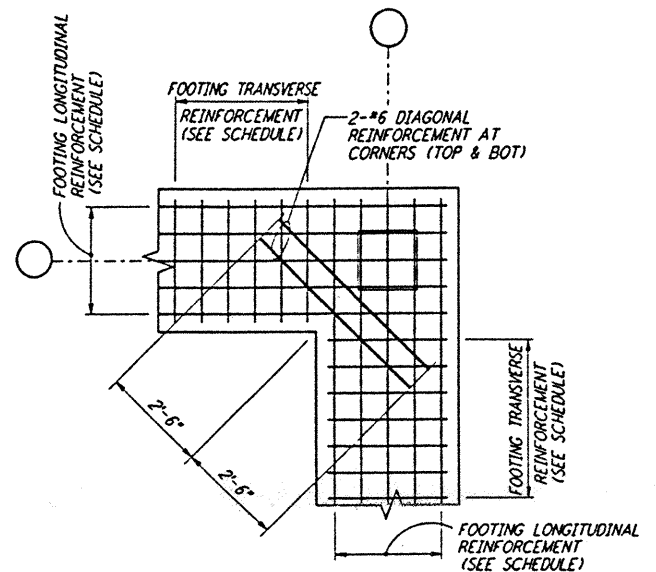
BASE ANGLE CONNECTION SECTION A



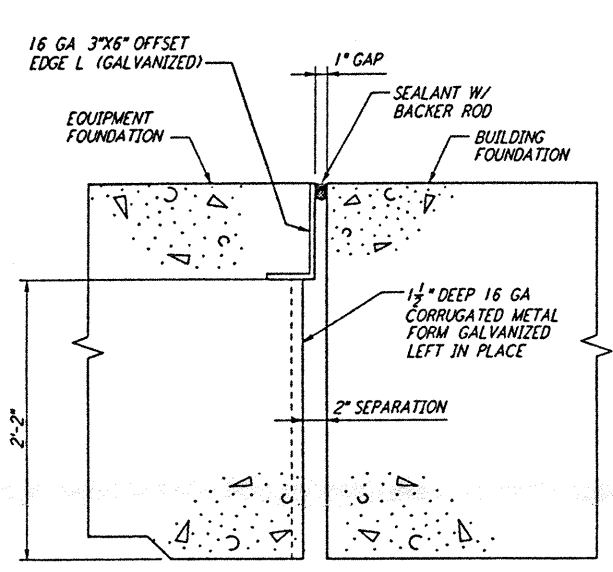
FRONT VIEW SIDE VIEW DETAIL 2



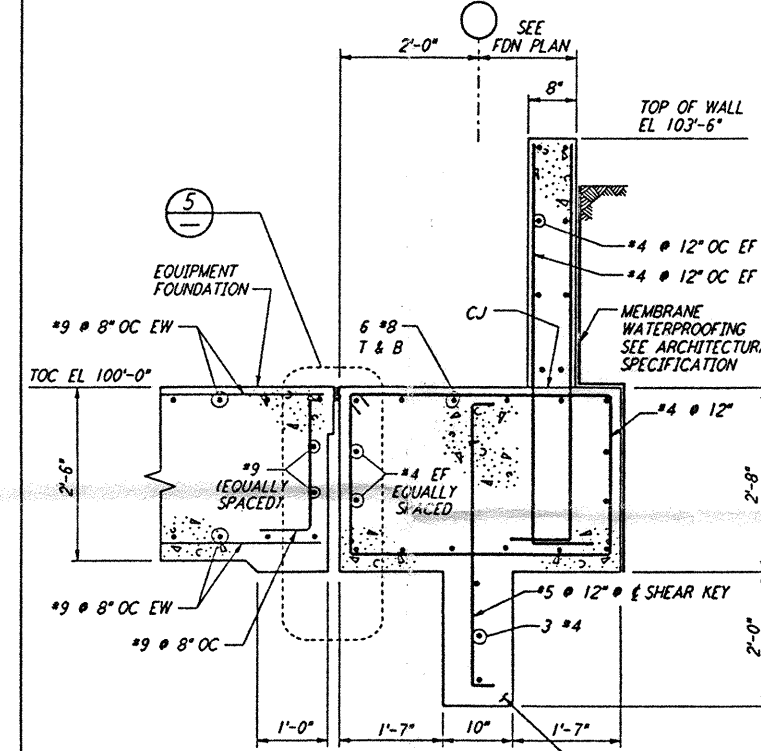
CONCRETE STAIRS ON GRADE SECTION J



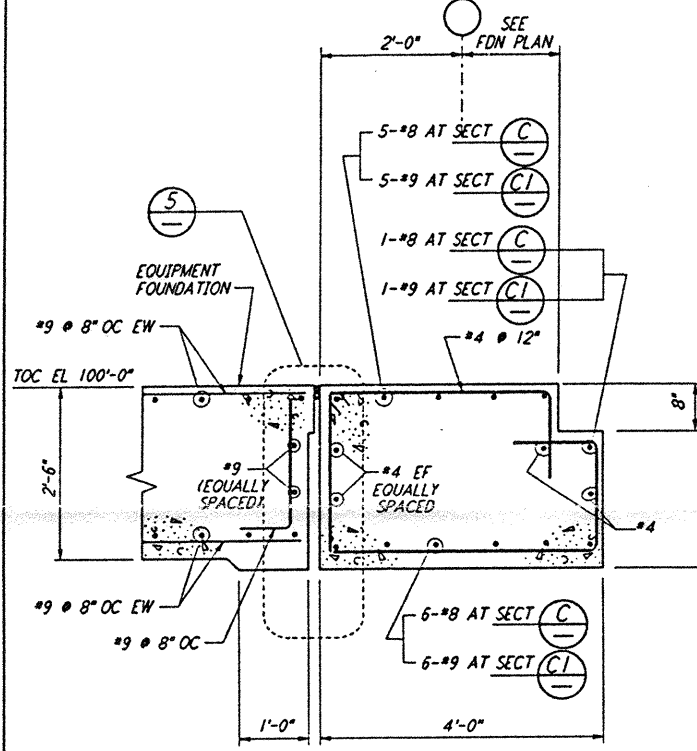
FOOTING DIAGONAL REINFORCEMENT AT CORNERS DETAIL 4



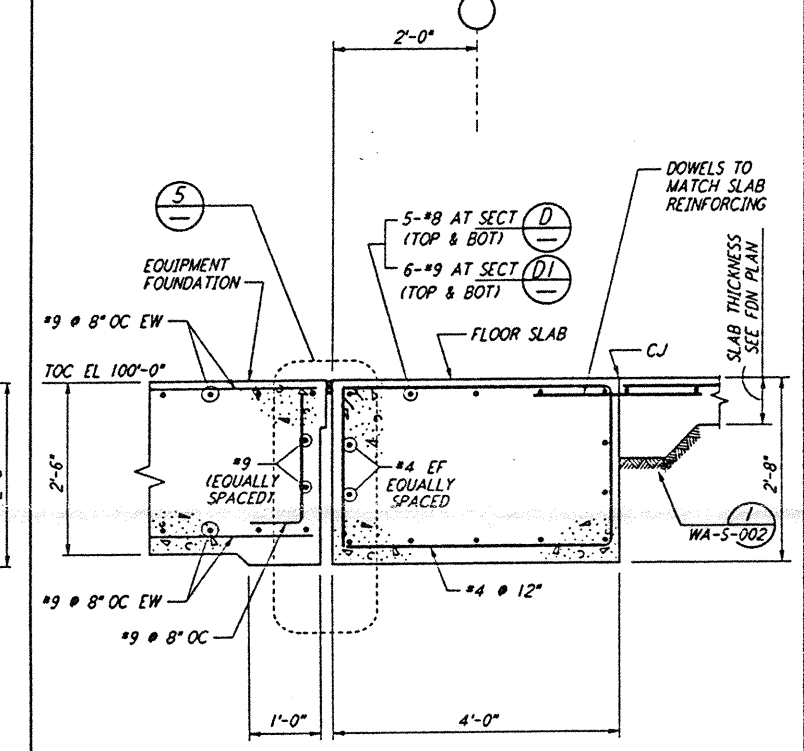
EQUIP FDN & BLDG FDN INTERFACE DETAIL 5



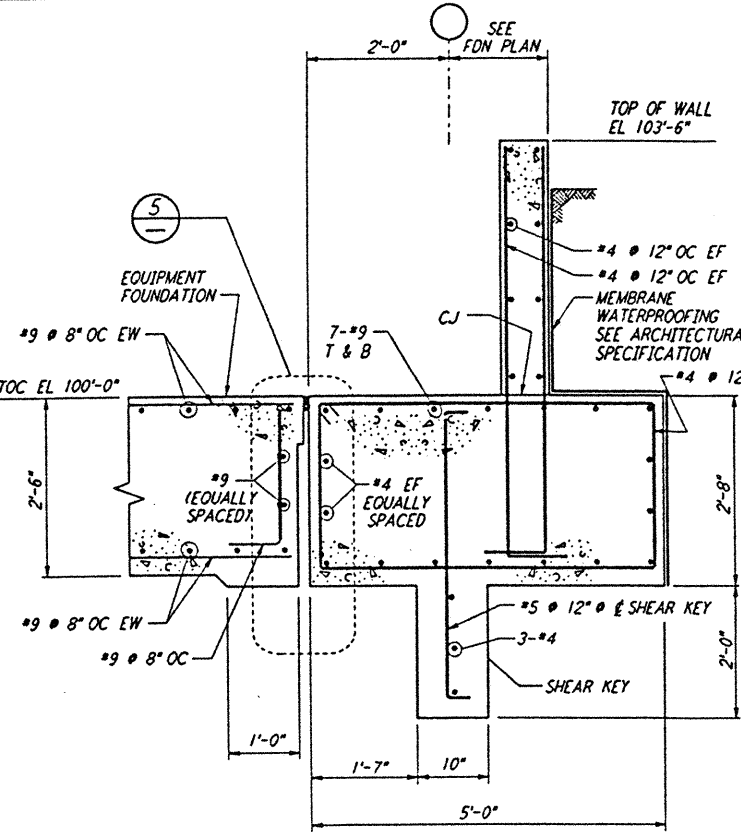
SECTION B B1



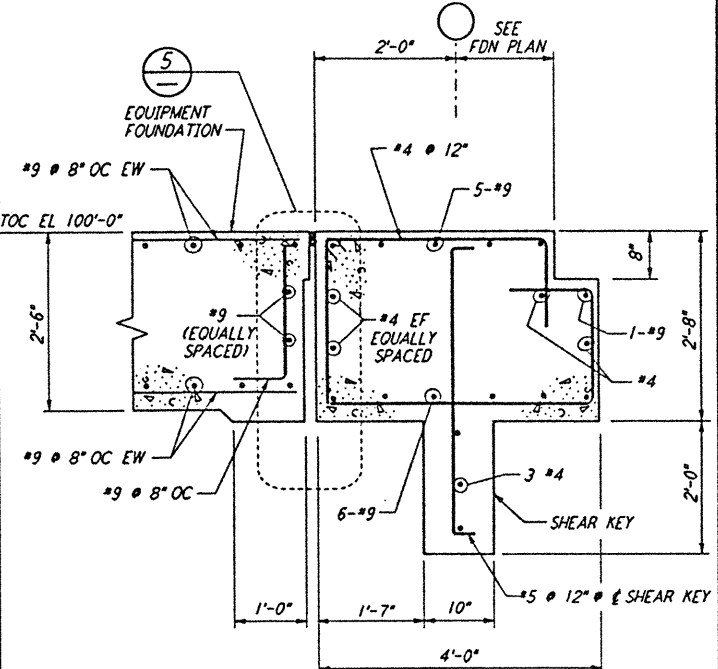
SECTION C C1



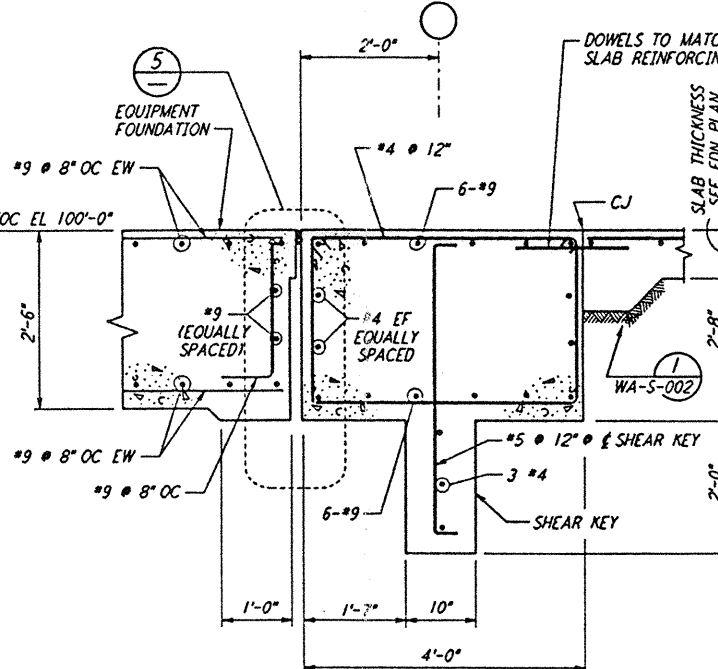
SECTION D D1



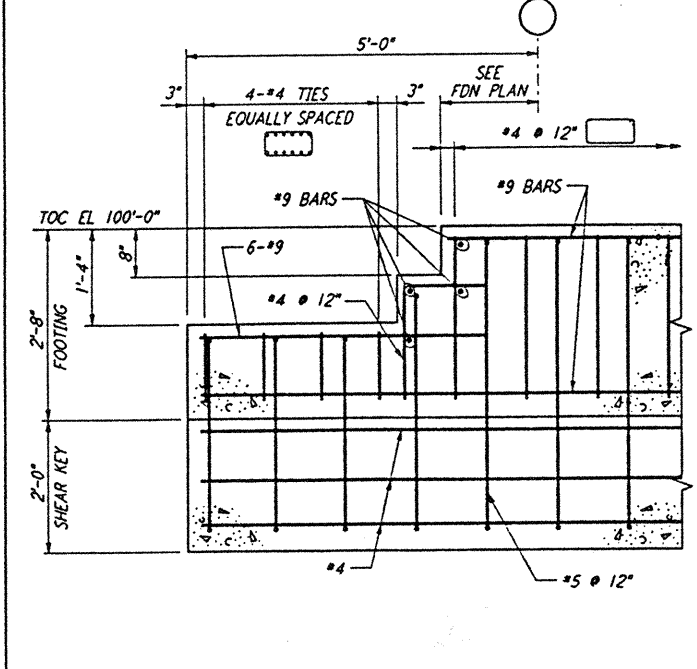
SECTION E



SECTION F



SECTION G



SECTION H

- NOTES:
1. FOR GENERAL NOTES, ABBREVIATIONS AND SYMBOLS, SEE DRAWING S-001

This document and the design it covers are the property of PARSONS. They are loaned only with the borrower's expressed written agreement that they will not be reproduced, copied, loaned, exhibited, or used in any other way, except by written consent from PARSONS to the borrower.

NO.	DATE	BY	CHKD	ENGR	PROJ	DESCRIPTION
B	4-19-96	MCS	100	PK		FINAL DESIGN REVIEW & BID
A	10-31-95			TOM		PRELIMINARY DESIGN REVIEW

DRAWN	MCS
CHECKED	
ENGINEER	
PROJ	

PARSONS
100 WEST WALNUT STREET
PASADENA, CALIFORNIA

LIGO
CALIFORNIA INSTITUTE OF TECHNOLOGY
MASSACHUSETTS INSTITUTE OF TECHNOLOGY

LASER INTERFEROMETER
GRAVITATIONAL-WAVE OBSERVATORY
SITE NO. 1 - HANFORD, WASHINGTON

TITLE	SHEET NUMBER	CONTRACT NUMBER	PROJECT NUMBER
STRUCTURAL STANDARD CONCRETE DETAILS SHEET 2	WA-S-003	PPI50969	8094