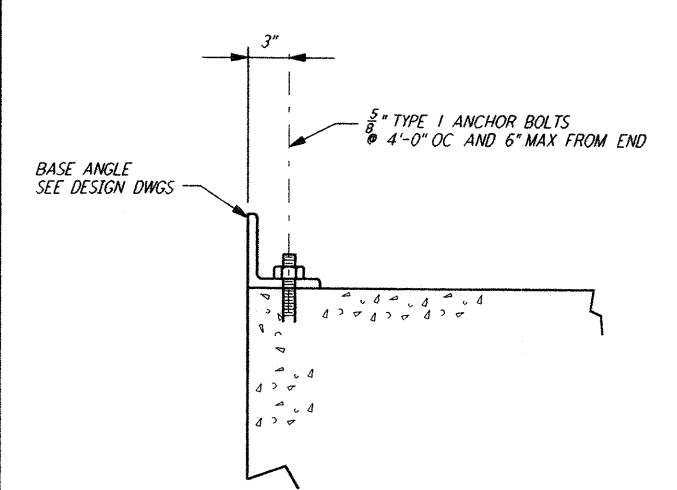
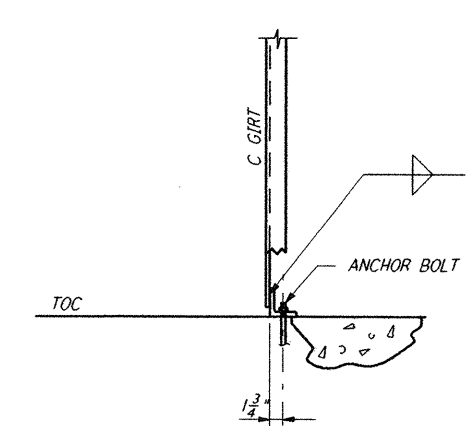


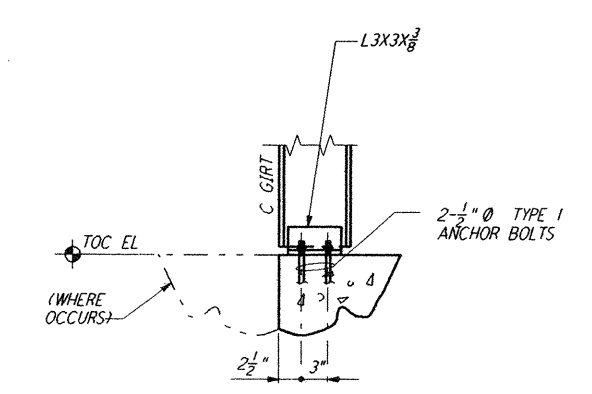
- NOTES:**
- BOLT MATERIAL SHALL BE IN ACCORDANCE WITH ASTM A307, UNLESS OTHERWISE SPECIFIED.
 - USE UNIFIED NATIONAL COARSE THREAD, CLASS 2 FIT.
 - USE HEAVY DOUBLE CHAMFER HEX NUTS UP TO 1", AND HEAVY FLAT FACE HEX NUTS LARGER THAN 1".
 - PROVIDE 1 HEX NUT FOR EACH BOLT, UNLESS OTHERWISE NOTED ON DESIGN DRAWINGS.
 - PLATE WASHER MATERIAL SHALL BE ASTM A36, UNLESS OTHERWISE NOTED.
 - FABRICATOR SHALL BUNDLE AND TAG BOLTS BY INDIVIDUAL FOUNDATIONS OR MEMBERS. TAGS SHALL BE WEATHER RESISTANT, WITH MARKS AT LEAST 1/2" HIGH, AND FIRMLY WIRED TO BUNDLES.
 - SLEEVES SHALL NOT BE USED UNLESS SPECIFIED ON THE DESIGN DRAWINGS.



BASE ANGLE CONNECTION (2)
WA-S-003



FRONT VIEW



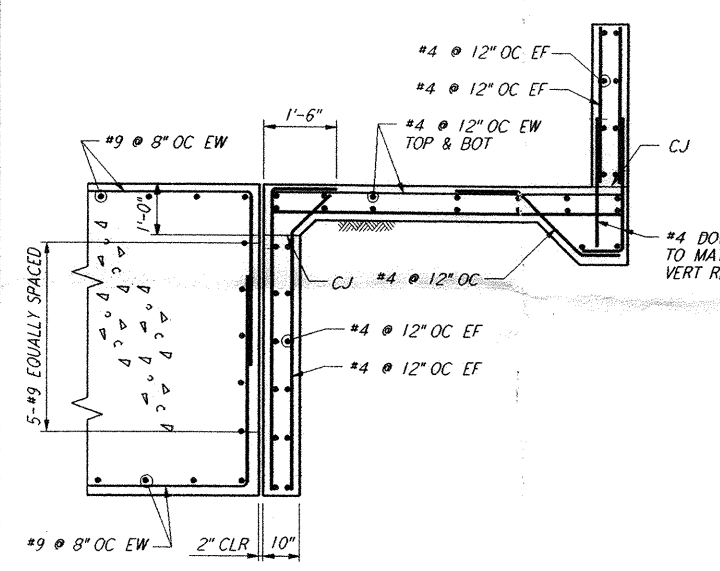
SIDE VIEW

DETAIL (3)
WA-S-003

ANCHOR BOLT SCHEDULE

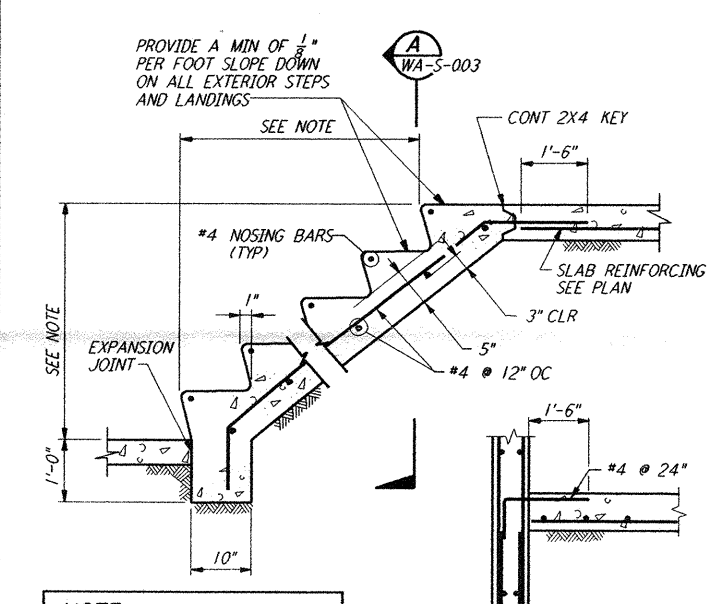
DIA D	TYPE 2		TYPE 3	SLEEVE TYPE 1, 2 & 3		TYPE 3	THREAD LENGTH	DIA D
	B	C	PLATE WASHER	DIA	LENGTH	WELD SIZE		
1/2"	2 1/2"	3 1/2"		2"	5"		1 1/2"	1/2"
3/8"	3 1/8"	3 3/8"		2"	5"		2 1/8"	3/8"
1/2"	3 1/2"	4 1/2"		2"	7"		2 1/2"	1/2"
3/4"	4 1/8"	5 1/2"		2"	7"		2 3/8"	3/4"
1"	5"	6 1/2"	2 1/2" X 2 1/2" X 3/8"	3"	10"	1/4"	3 1/2"	1"
1 1/8"	5 5/8"	7"	3" X 3" X 1/2"	3"	10"	1/4"	3 3/8"	1 1/8"
1 1/2"	6 1/4"	7 3/4"	3 1/2" X 3 1/2" X 1/2"	3"	10"	3/8"	4"	1 1/2"
1 3/8"	6 3/8"	8 1/2"	3 1/2" X 3 1/2" X 1/2"	4"	15"	3/8"	4 3/8"	1 3/8"
1 1/2"	7 1/2"	9 1/2"	3 1/2" X 3 1/2" X 5/8"	4"	15"	3/8"	4 3/4"	1 1/2"

ANCHOR BOLTS DETAILS (1)
WA-S-003



NOTE:
DO NOT REMOVE WALL SHORING UNTIL BOTTOM AND TOP SLAB ON GRADE ARE IN PLACE.

DETAIL (4)
WA-S-003



NOTE:
FOR SIZE AND NUMBER OF TREADS AND RISERS, SEE PLAN

SECTION (A)
WA-S-003

CONCRETE STAIRS ON GRADE (5)
WA-S-003

NOTES:
1. FOR GENERAL NOTES, ABBREVIATIONS AND SYMBOLS, SEE DRAWING S-001

This document and the design it covers are the property of PARSONS. They are loaned only with the borrower's expressed written agreement that they will not be reproduced, copied, loaned, exhibited, or used in any other way, except by written consent from PARSONS to the borrower.

This document and the design it covers are the property of PARSONS. They are loaned only with the borrower's expressed written agreement that they will not be reproduced, copied, loaned, exhibited, or used in any other way, except by written consent from PARSONS to the borrower.

NO.	DATE	APRD BY	DESCRIPTION OF REVISION
9			
8			
7			
6			
5			
4			
3			
2			
1			

NO.	DATE	APRD BY	DESCRIPTION OF REVISION
J			
H			
G			
F			
E			
D			
C			
B			
A	10-31-95	TOM	PRELIMINARY DESIGN REVIEW

DATE	10-31-95
DRAWN	MCS
CHECKED	
ENGINEER	
PROJ MGR	

PARSONS
 100 WEST WALNUT STREET
 PASADENA, CALIFORNIA

LIGO
 CALIFORNIA INSTITUTE OF TECHNOLOGY
 MASSACHUSETTS INSTITUTE OF TECHNOLOGY

LASER INTERFEROMETER
 GRAVITATIONAL-WAVE OBSERVATORY
 SITE NO. 1 - HANFORD, WASHINGTON

TITLE: STANDARD CONCRETE DETAILS SHEET 2
 SCALE: NONE
 CONTRACT NUMBER: PPI50969
 PROJECT NUMBER: 8094
WA-S-003