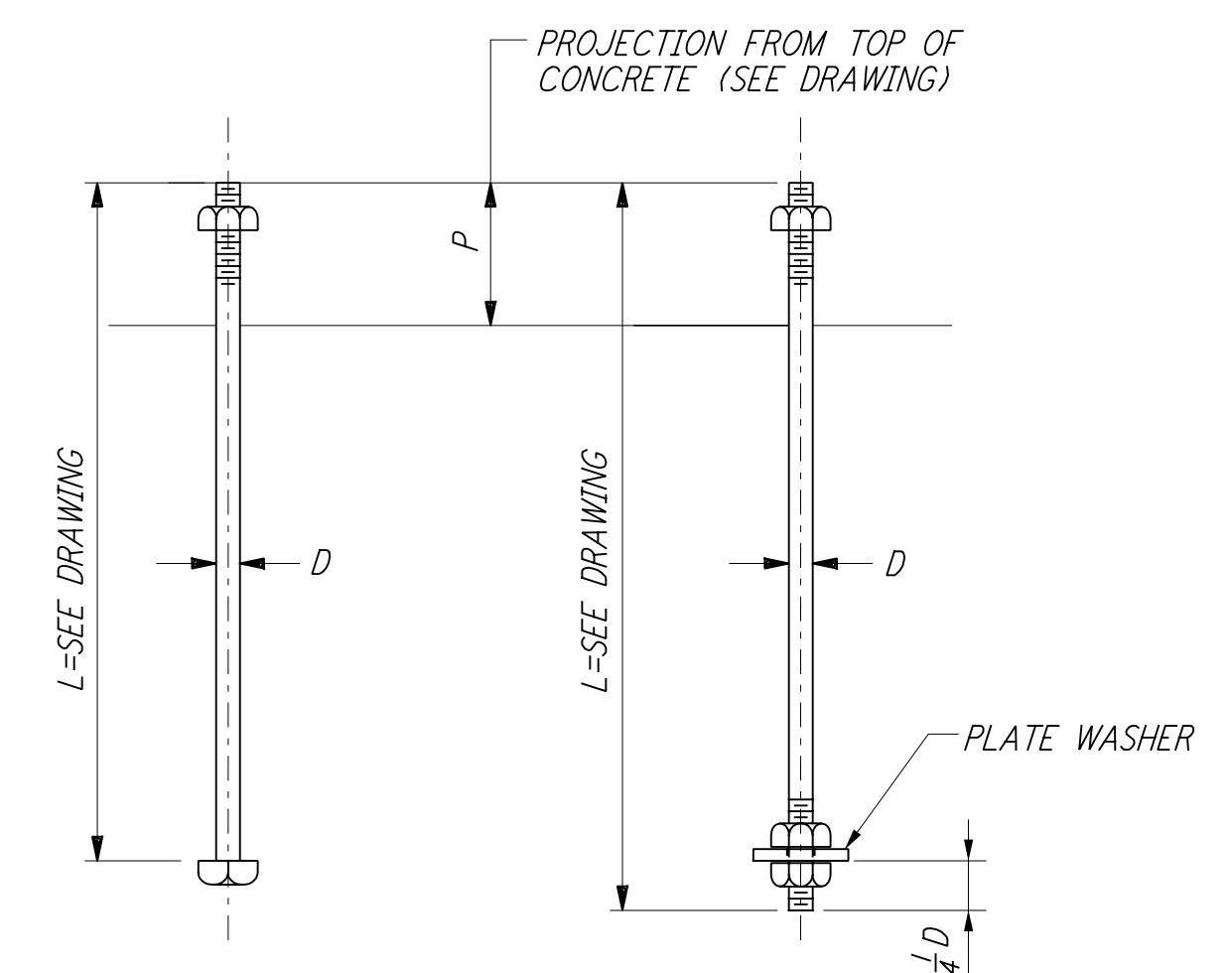


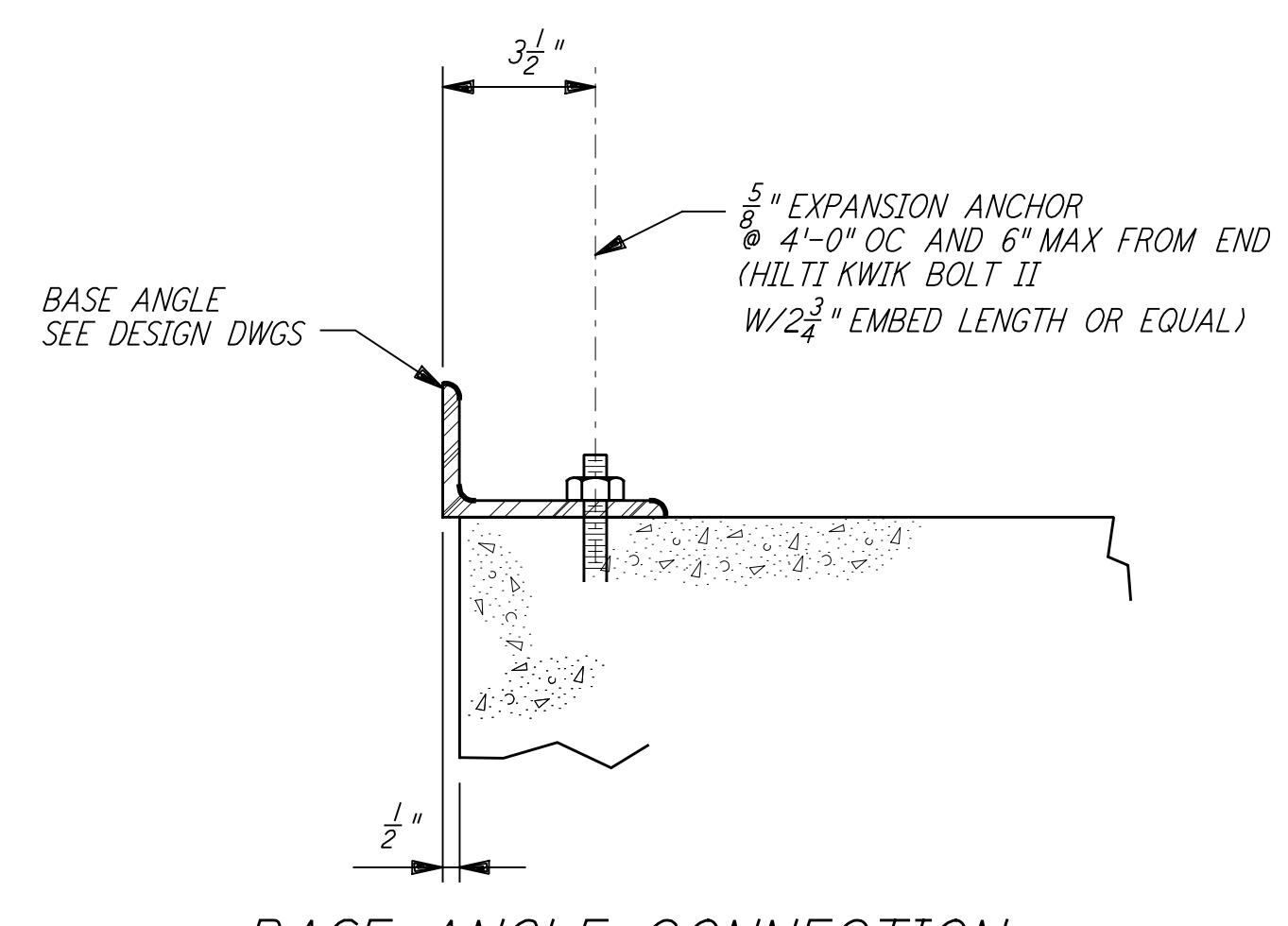
NOTES:

1. BOLT MATERIAL SHALL BE IN ACCORDANCE WITH ASTM A307, UNLESS OTHERWISE SPECIFIED.
2. USE UNIFIED NATIONAL COARSE THREAD, CLASS 2 FIT.
3. USE HEAVY DOUBLE CHAMFER HEX NUTS UP TO 1", AND HEAVY FLAT FACE HEX NUTS LARGER THAN 1".
4. PROVIDE 1 HEX NUT FOR EACH BOLT, UNLESS OTHERWISE NOTED ON DESIGN DRAWINGS.
5. PLATE WASHER MATERIAL SHALL BE ASTM A36, UNLESS OTHERWISE NOTED.
6. FABRICATOR SHALL BUNDLE AND TAG BOLTS BY INDIVIDUAL FOUNDATIONS OR MEMBERS. TAGS SHALL BE WEATHER RESISTANT, WITH MARKS AT LEAST 1/2" HIGH, AND FIRMLY WIRED TO BUNDLES.
7. SLEEVES SHALL NOT BE USED UNLESS SPECIFIED ON THE DESIGN DRAWINGS.

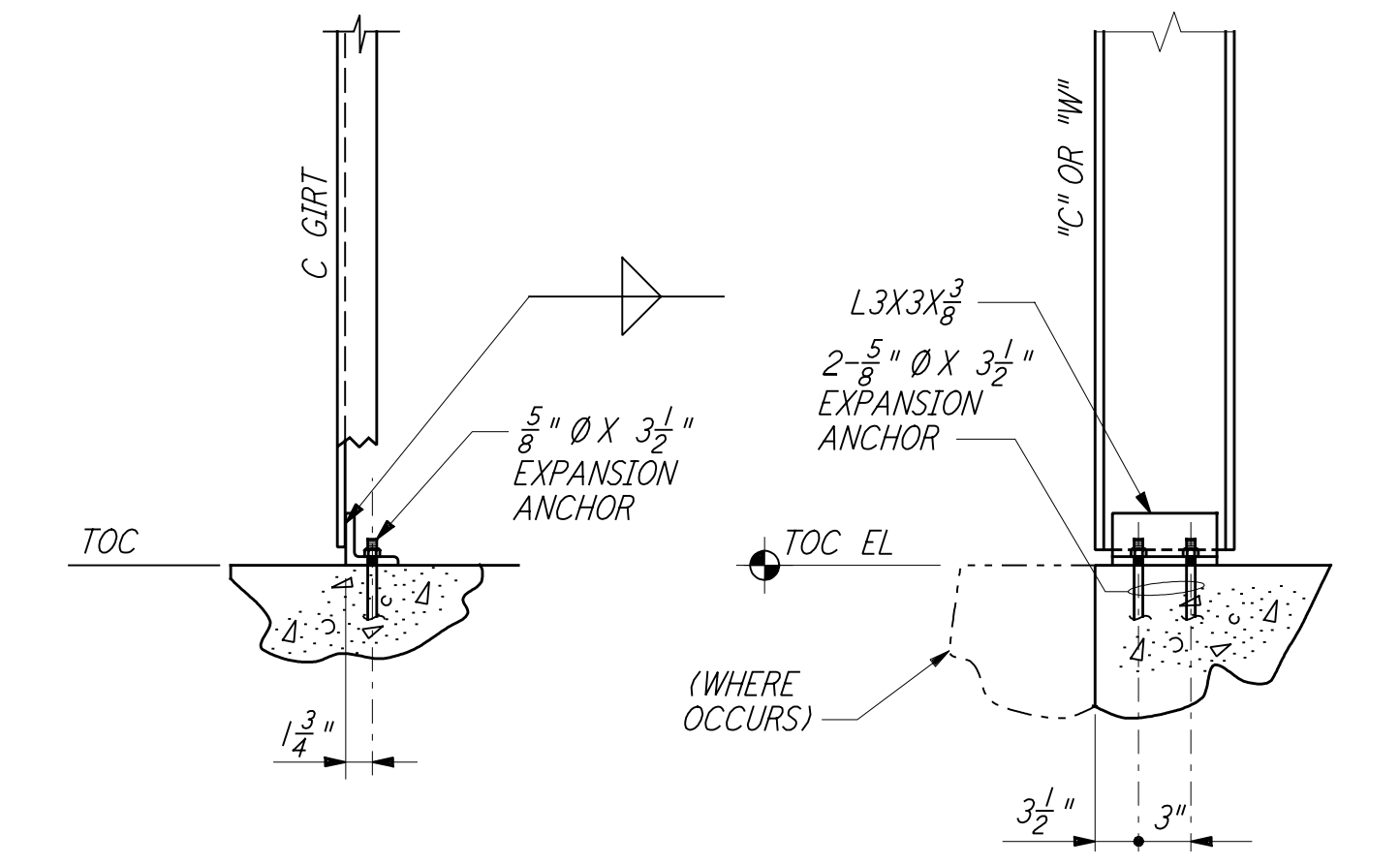


TYPE 1
 TYPE 2
ANCHOR BOLTS DETAILS

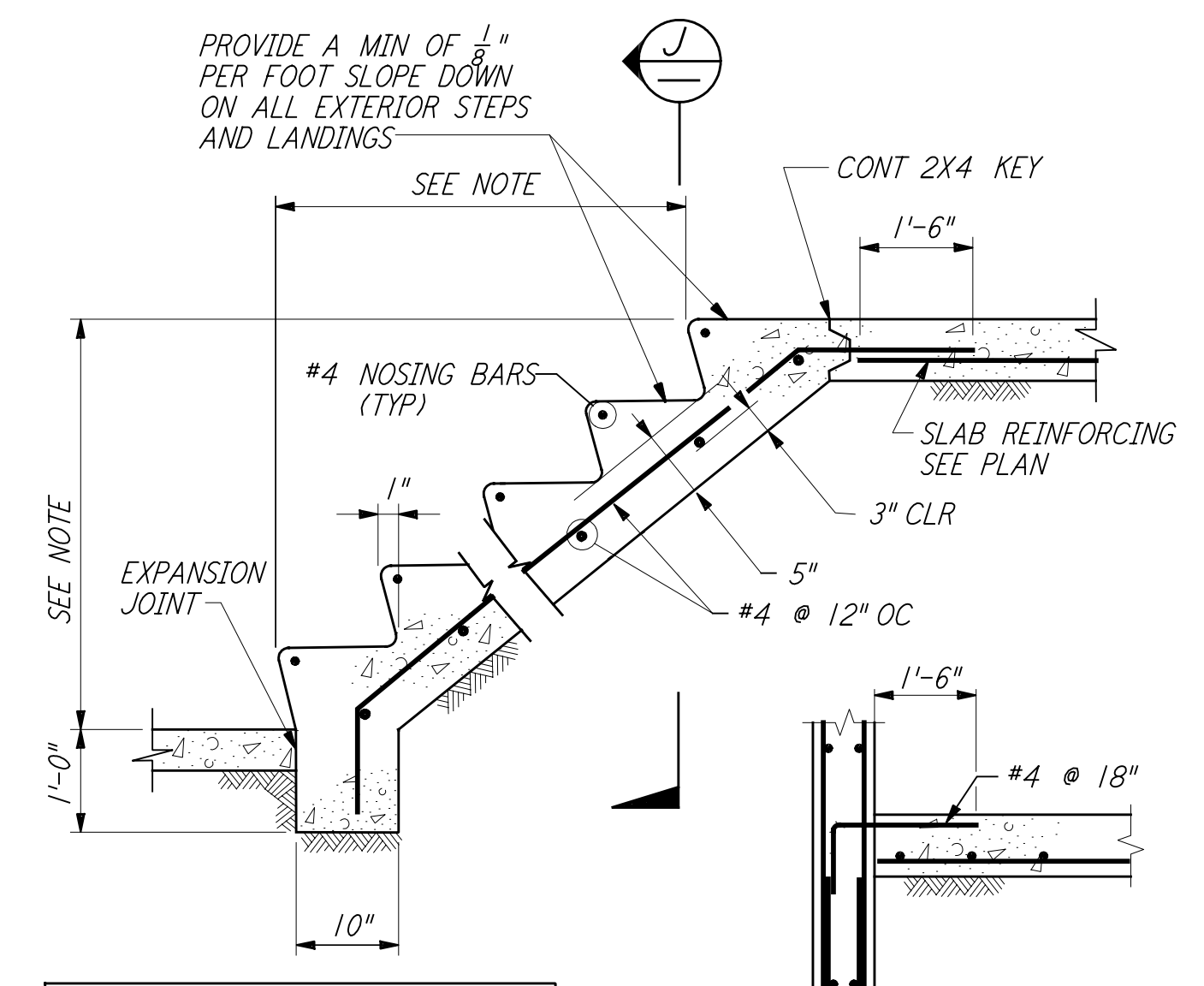
DIA D	PLATE WASHER	SLEEVE IF REQ'D		THREAD LENGTH	DIA D
		DIA	LENGTH		
1/2"		2"	5"	1 3/4"	1/2"
5/8"		2"	5"	2 1/8"	5/8"
3/4"		2"	7"	2 1/2"	3/4"
7/8"		2"	7"	2 7/8"	7/8"
1"	2 1/2" X 2 1/2" X 3/16"	3"	10"	3 1/2"	1"
1 1/8"	3" X 3" X 1/2"	3"	10"	3 5/8"	1 1/8"
1 1/4"	3 1/2" X 3 1/4" X 1/2"	3"	10"	4"	1 1/4"
1 3/8"	3 1/2" X 3 1/2" X 1/2"	4"	15"	4 3/8"	1 3/8"
1 1/2"	3 3/4" X 3 3/4" X 5/8"	4"	15"	4 3/4"	1 1/2"



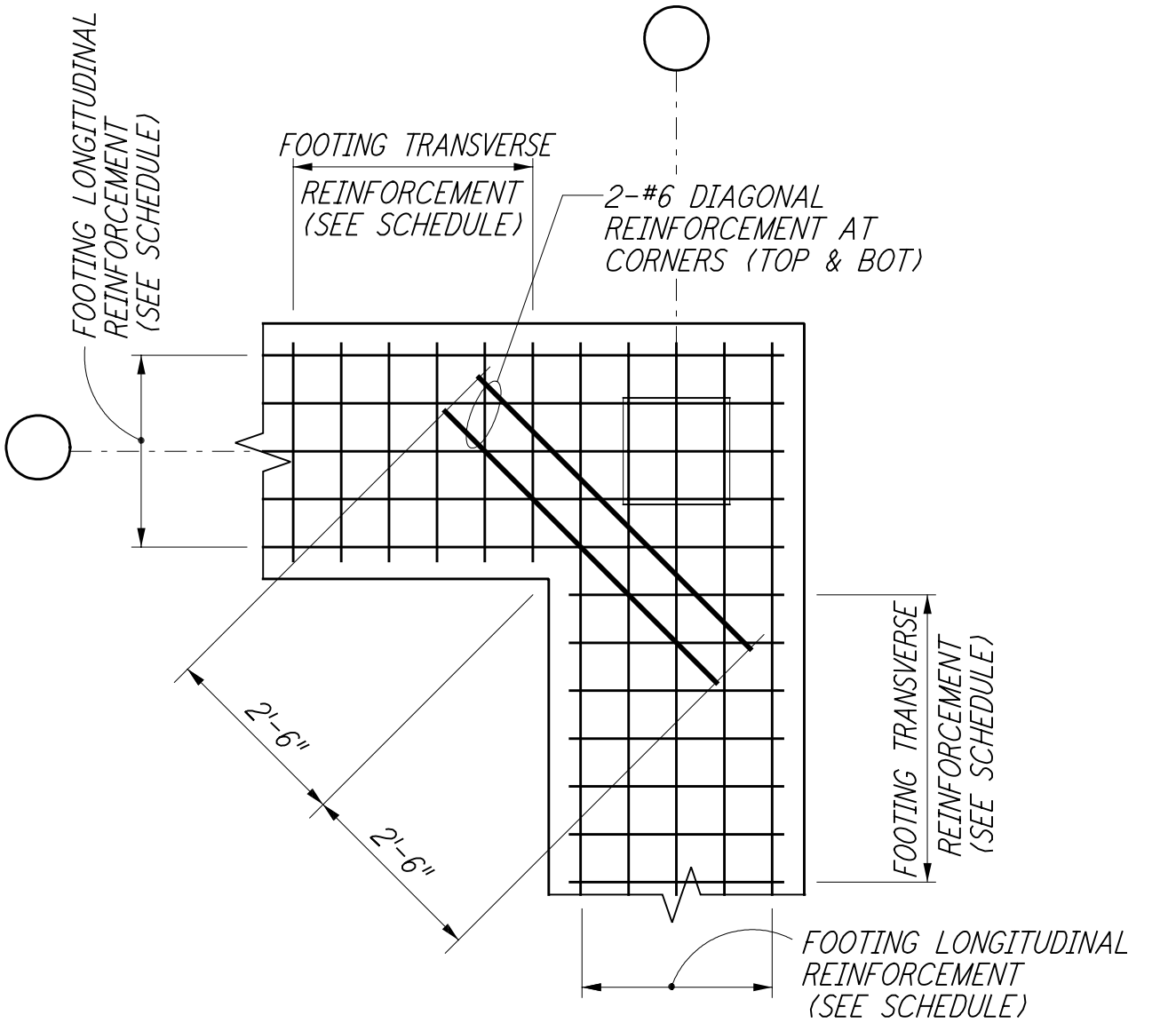
BASE ANGLE CONNECTION
 SECTION A



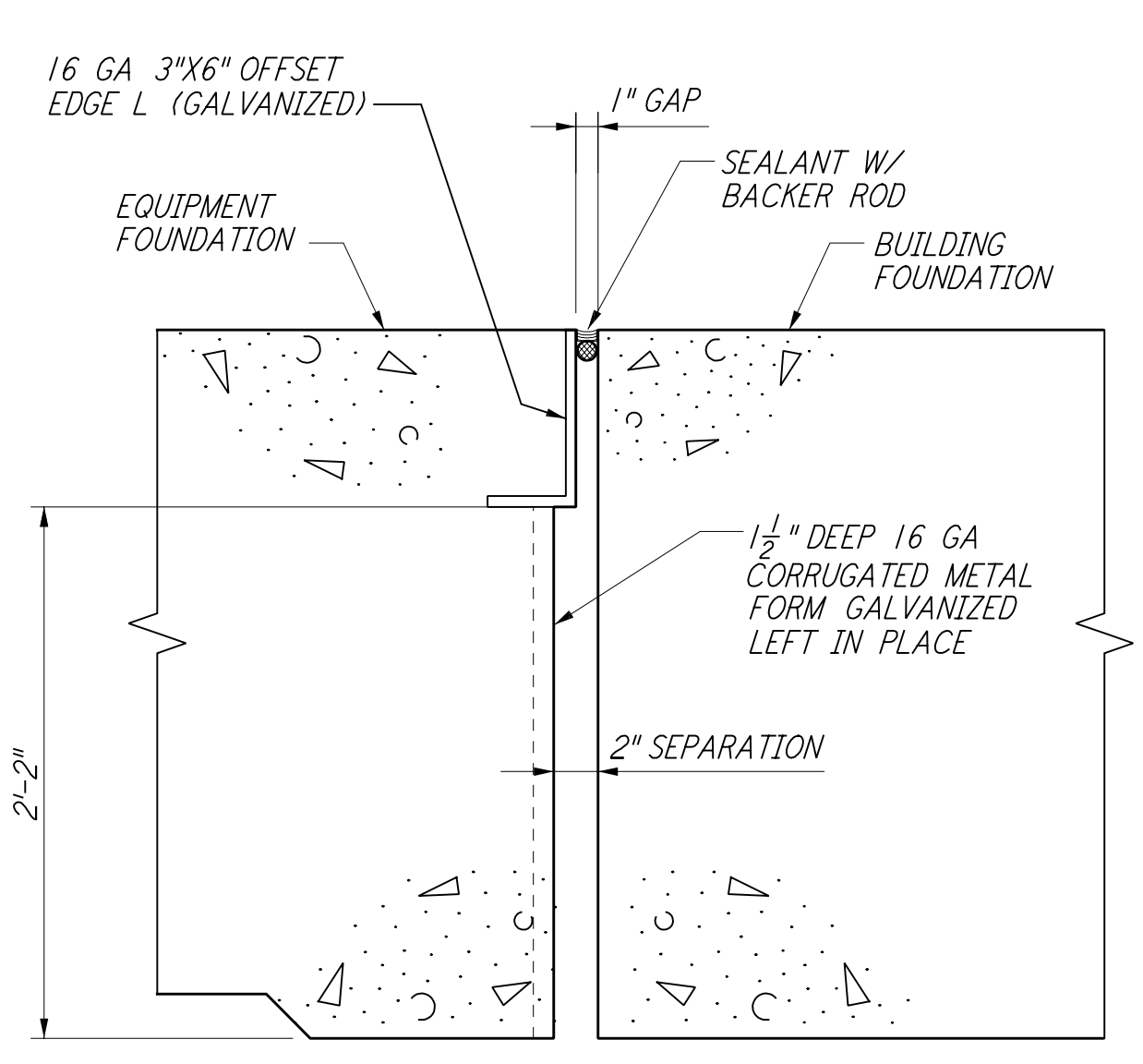
FRONT VIEW
 SIDE VIEW
DETAIL 2



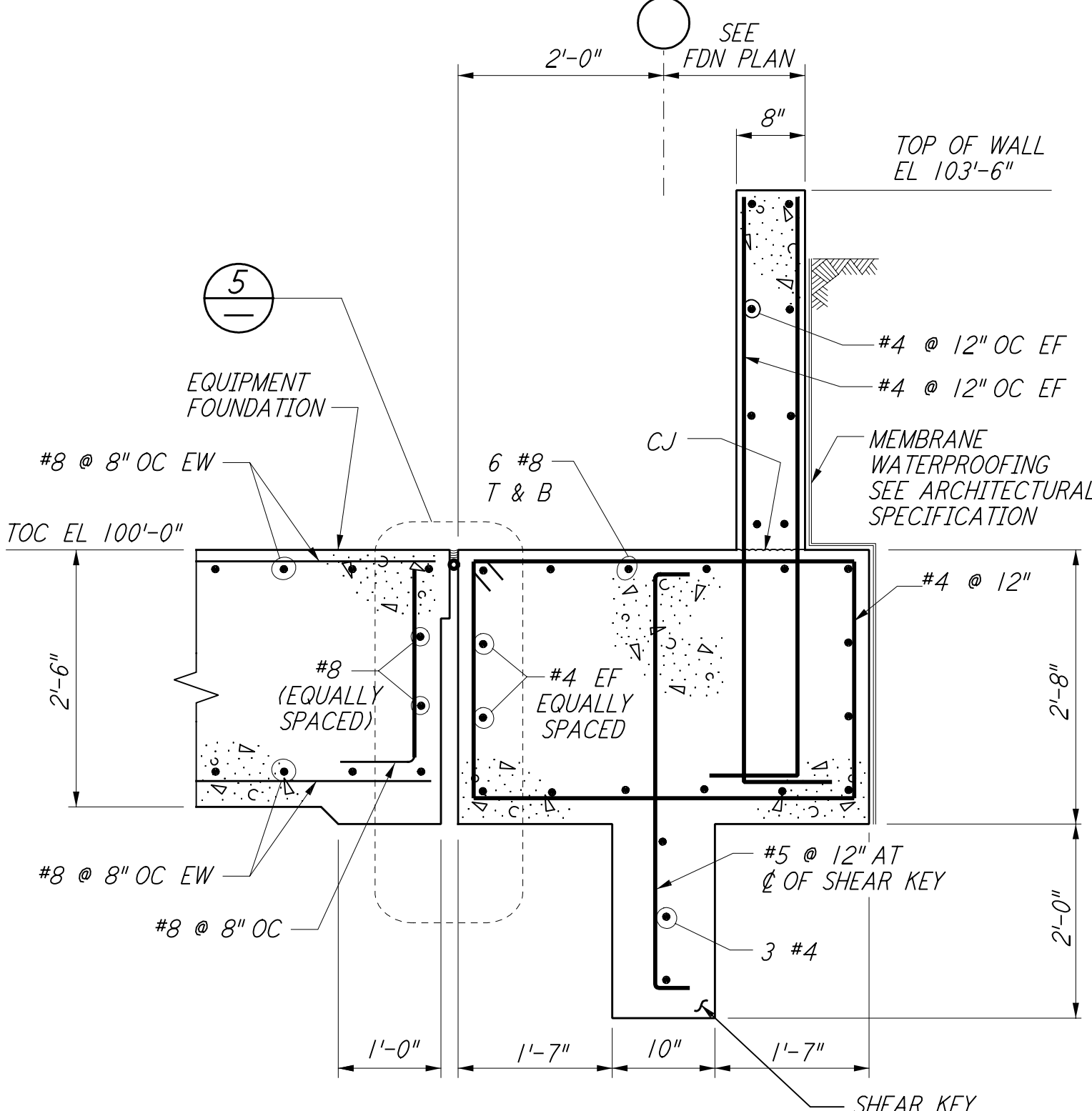
CONCRETE STAIRS ON GRADE
 SECTION J



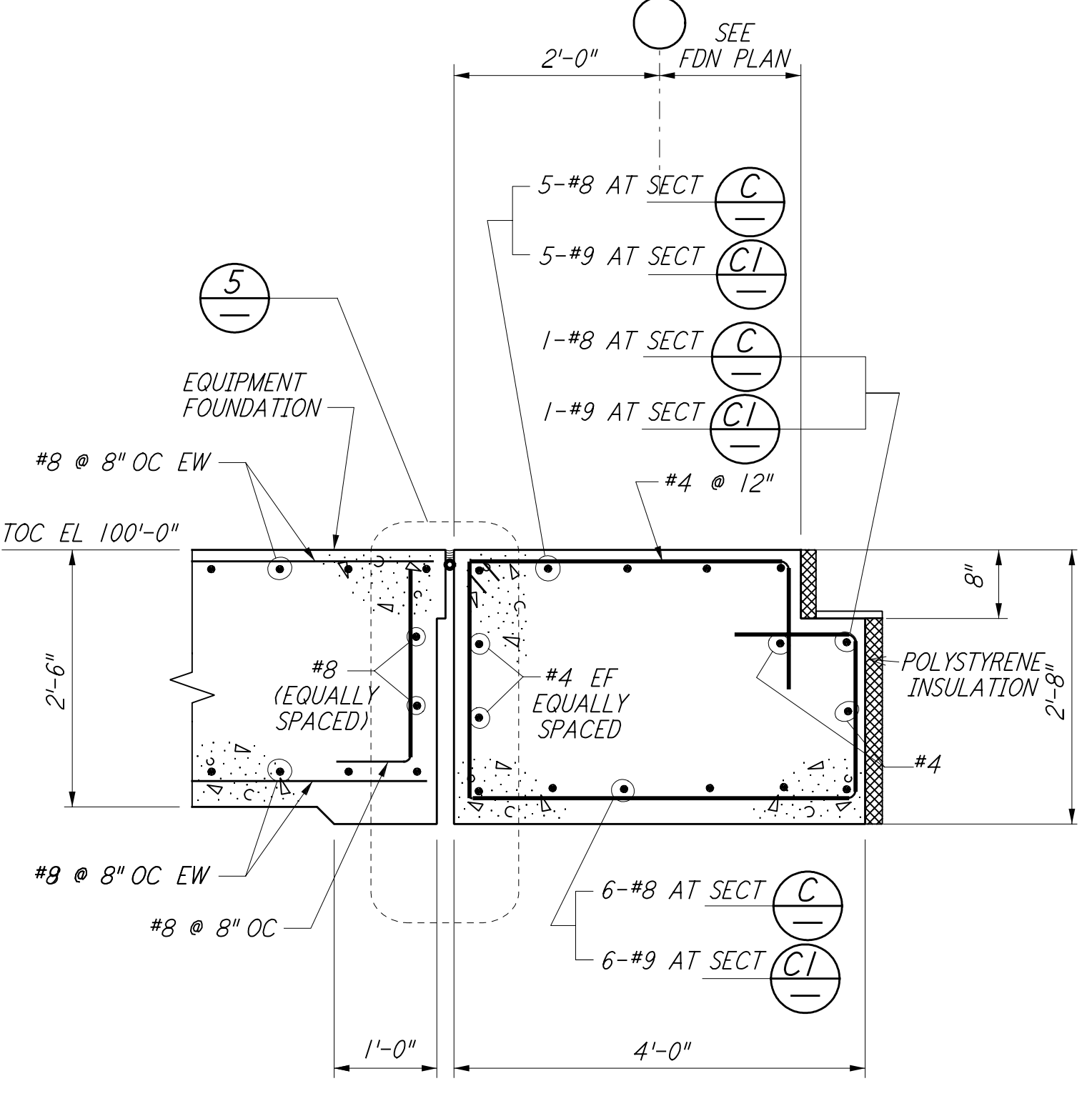
FOOTING DIAGONAL REINFORCEMENT AT CORNERS
 DETAIL 4



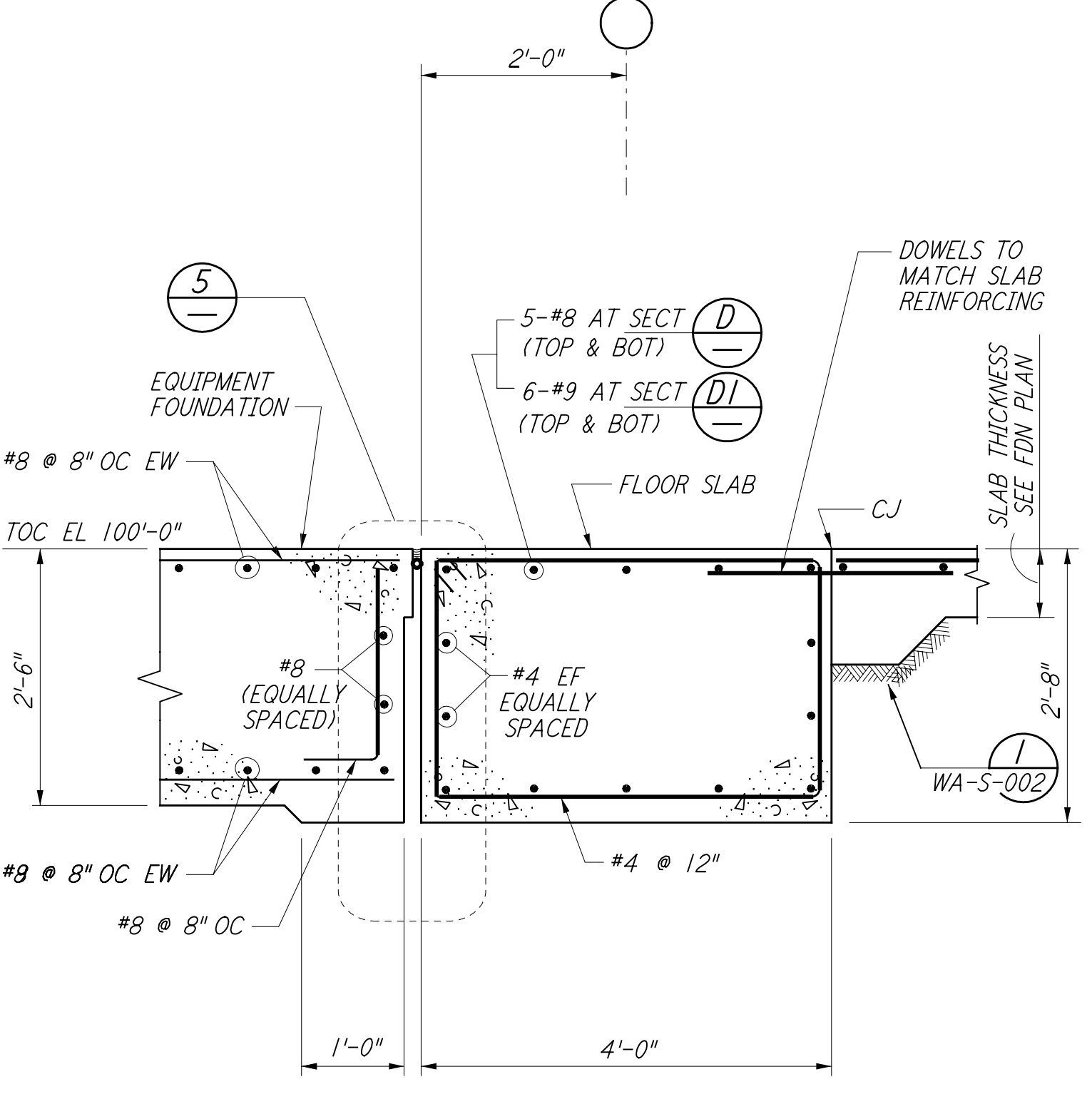
EQUIP FDN & BLDG FDN INTERFACE
 DETAIL 5



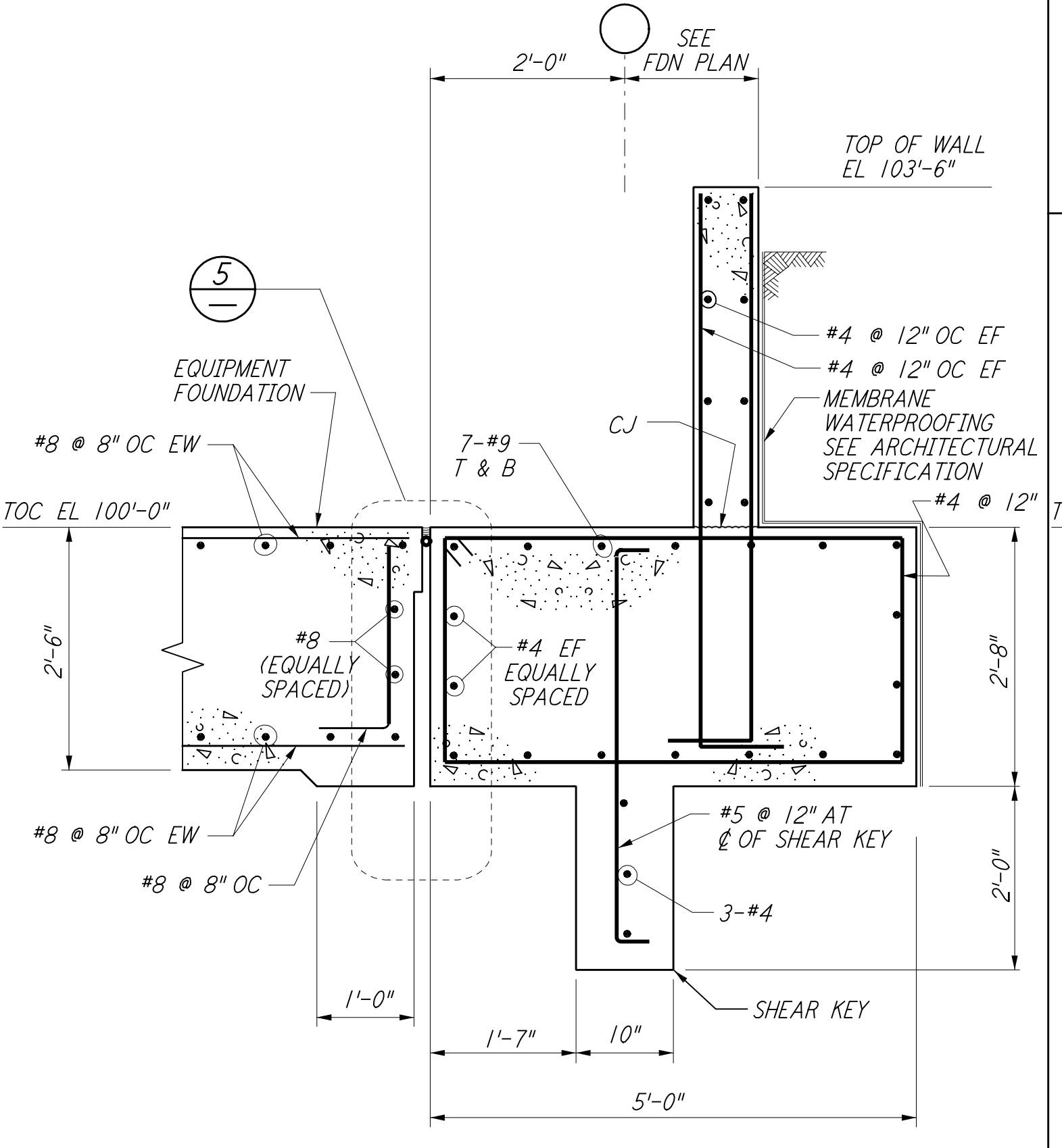
SECTION B



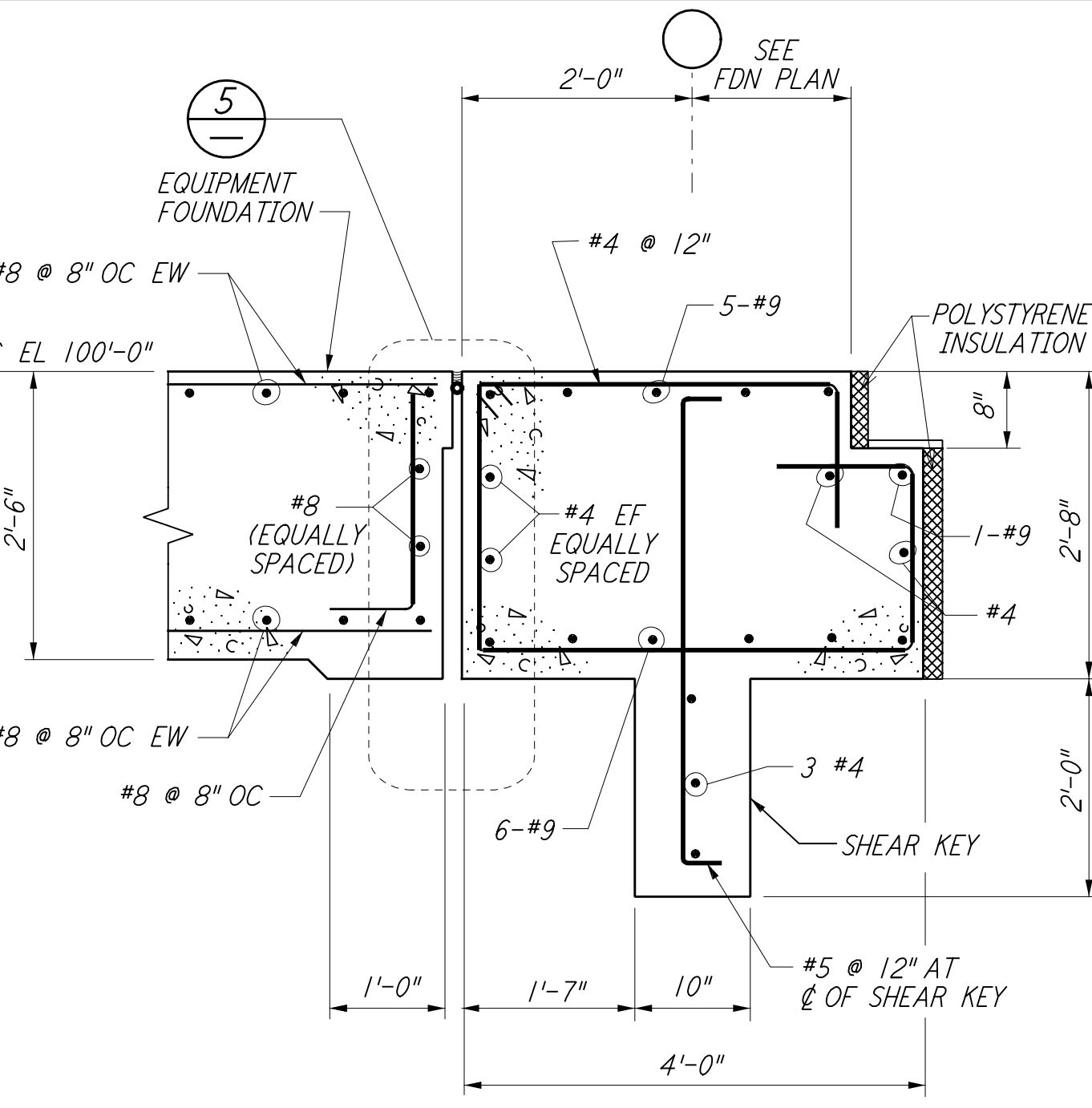
SECTION C



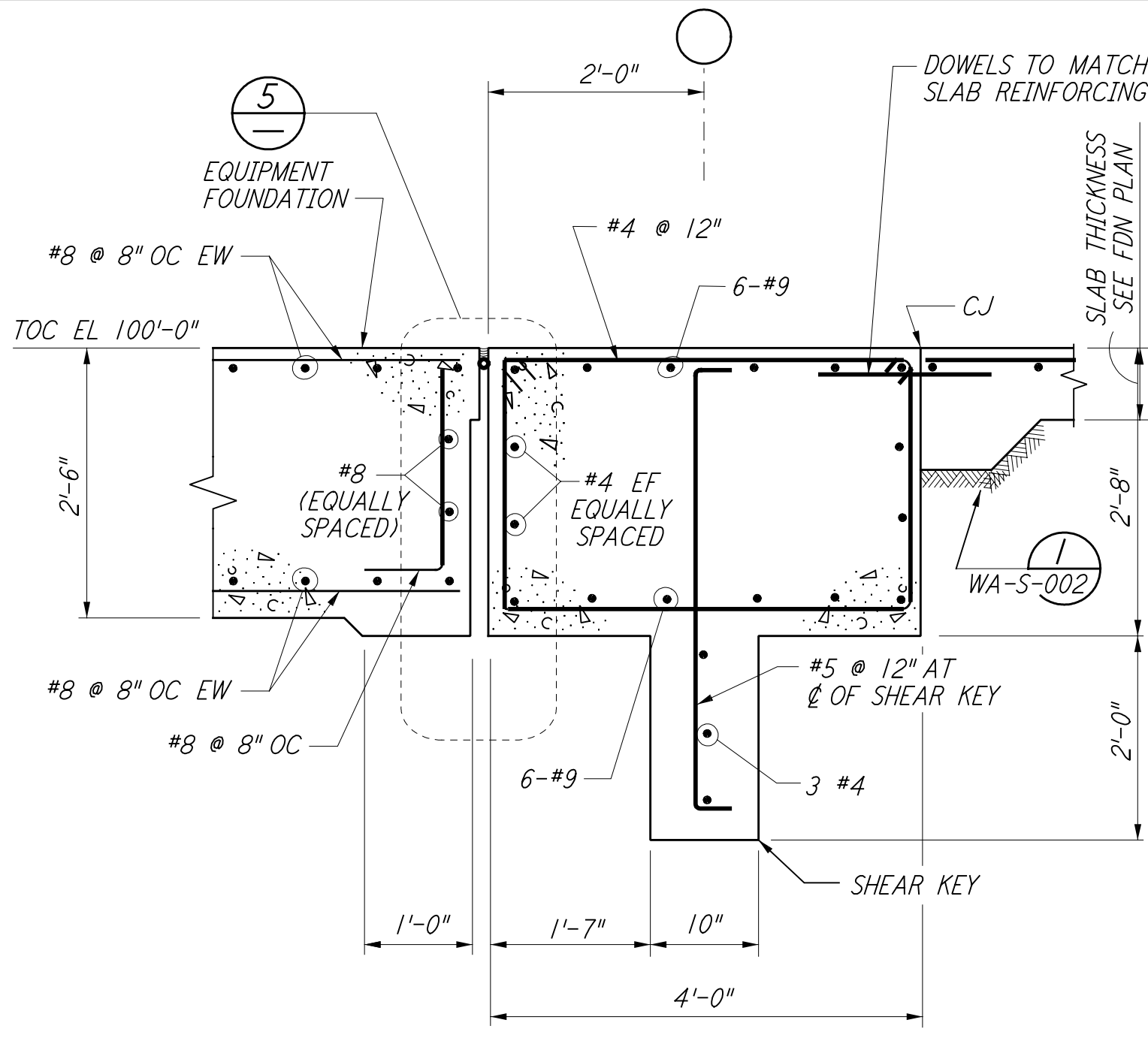
SECTION D



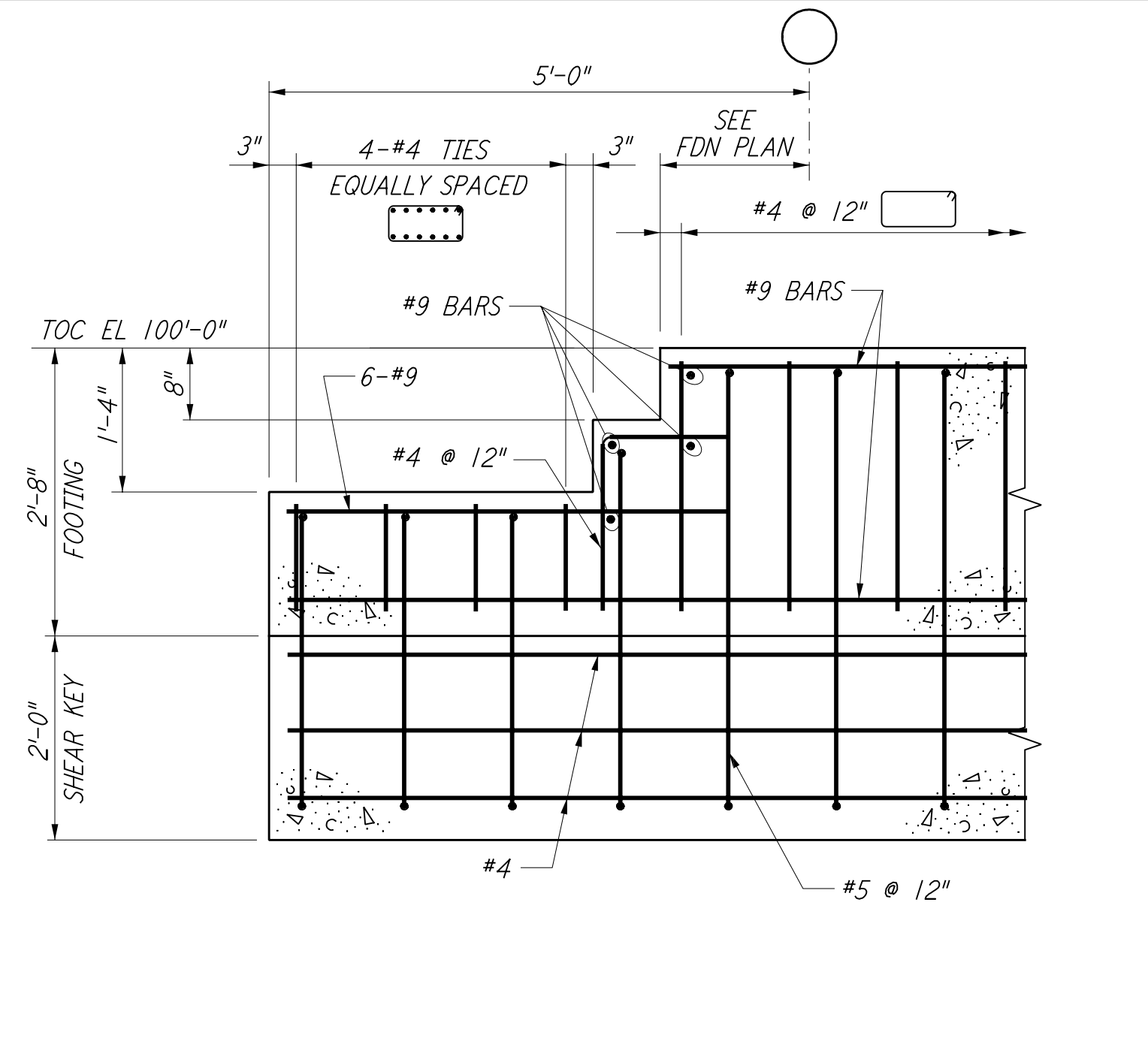
SECTION E



SECTION F



SECTION G



SECTION H

NOTES:
 1. FOR GENERAL NOTES, ABBREVIATIONS AND SYMBOLS, SEE DRAWING S-001

NO.	DATE	BY	CHKD	ENGR	PROJ	DESCRIPTION
1	6-15-98	CKT				ISSUED FOR AS-BUILT

ISSUED FOR CONSTRUCTION
 DRAWN MCS 6-24-96
 CHECKED DDM 7-2-96
 ENGINEER BP 6-28-96
 PROJ MOW 7-9-96
AS-BUILT DRAWINGS



LIGO-D960288-01-0
 LASER INTERFEROMETER GRAVITATIONAL-WAVE OBSERVATORY
 SITE NO. 1 - HANFORD, WASHINGTON

TITLE	SCALE	PROJECT NUMBER
STRUCTURAL STANDARD CONCRETE DETAILS SHEET 2	NONE	PP150969 8094
SHEET NUMBER	REVISIONS	
WA-S-003		

This document and the design it covers are the property of PARSONS. They are loaned only with the borrower's expressed written agreement that they will not be reproduced, copied, loaned, exhibited, or used in any other way, except by written consent from PARSONS to the borrower.