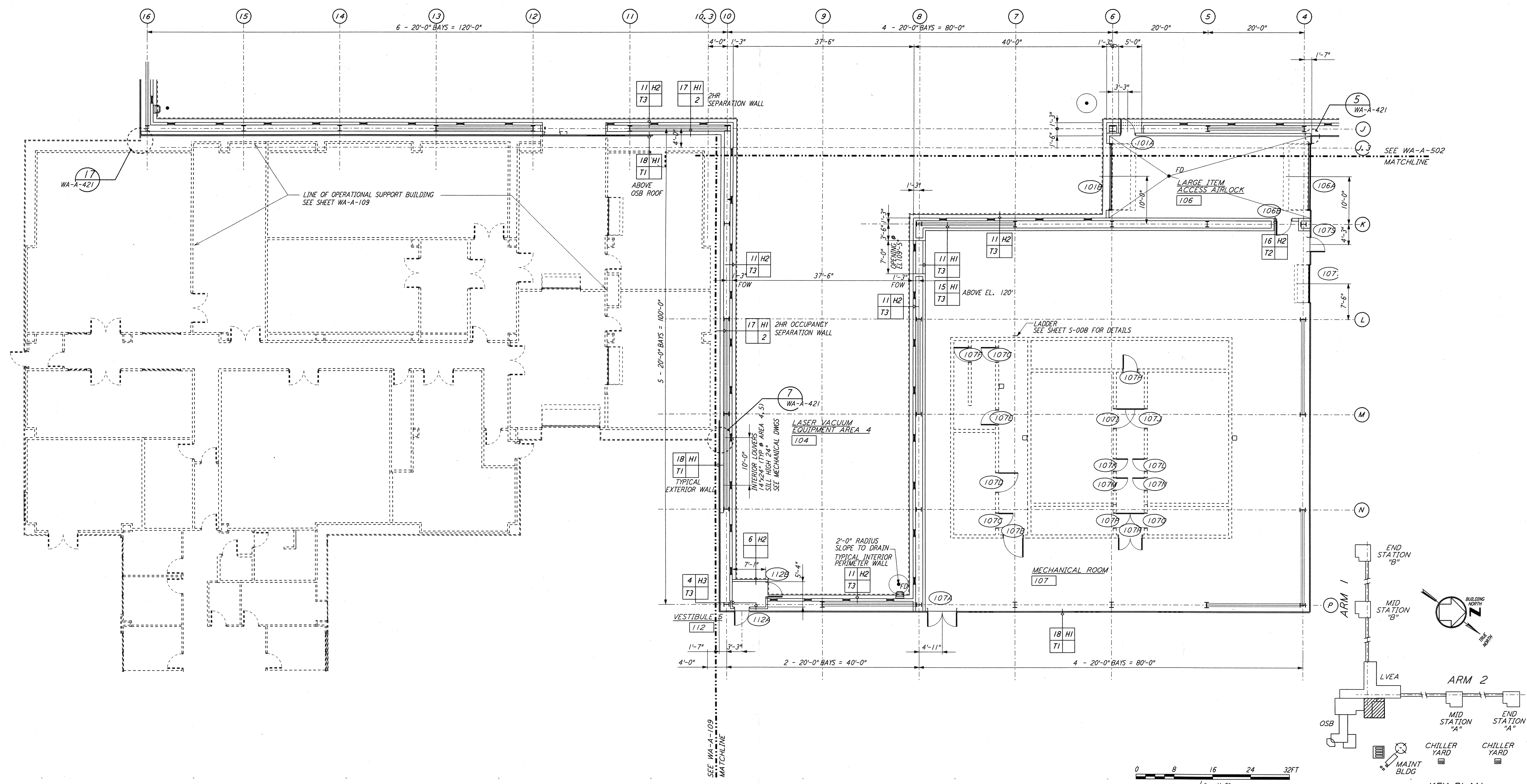
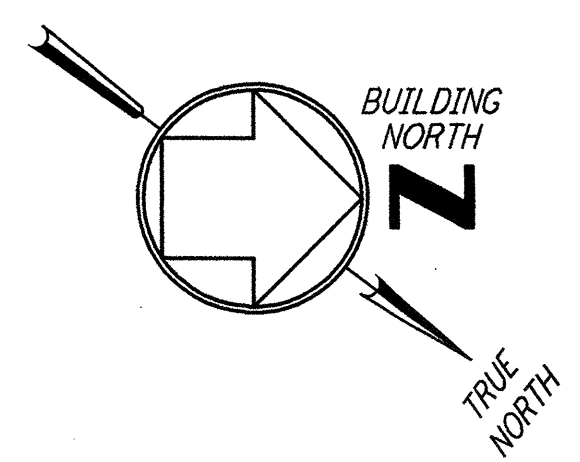


NOTE: SEE SPECIFICATIONS FOR ADDITIONAL INFORMATION AND SCHEDULES



This document and the design it covers are the property of PARSONS. They are loaned only with the borrower's expressed written agreement that they will not be reproduced, copied, loaned, exhibited, or used in any other way, except by written consent from PARSONS to the borrower.

NO.	DATE	BY	CHKD	ENGR	PROJ	DESCRIPTION
2	5-15-98	CKT	AK	AK	MDW	ISSUED FOR AS-BUILT
1	2-28-97	CKT	TB	AK	TDM	CORNER STATION VSEA PARTITION

ISSUED FOR CONSTRUCTION		
DRAWN	CKT/DS	5-12-96
CHECKED	TB	5-26-96
ENGINEER	bkk	7-12-96
PROJ	MDW	7-12-96

AS-BUILT DRAWINGS

100 WEST WALNUT STREET
PASADENA, CALIFORNIA

CALIFORNIA INSTITUTE OF TECHNOLOGY
MASSACHUSETTS INSTITUTE OF TECHNOLOGY

LIGO-D960277-02-0

LASER INTERFEROMETER
GRAVITATIONAL-WAVE OBSERVATORY
SITE NO. 1 - HANFORD, WASHINGTON

TITLE	ARCHITECTURAL CORNER STATION LVEA PARTIAL FLOOR PLAN SHEET 4	SCALE	AS NOTED	CONTRACT NUMBER	PP150969	PROJECT NUMBER	8094
SHEET NUMBER	WA-A-505	REVISIONS					

Tue Jul 14 12:44:10 1998 CAPLOTQUE\S3-V98B2.DWG 52085 K:\V98B2\or-505.rpt