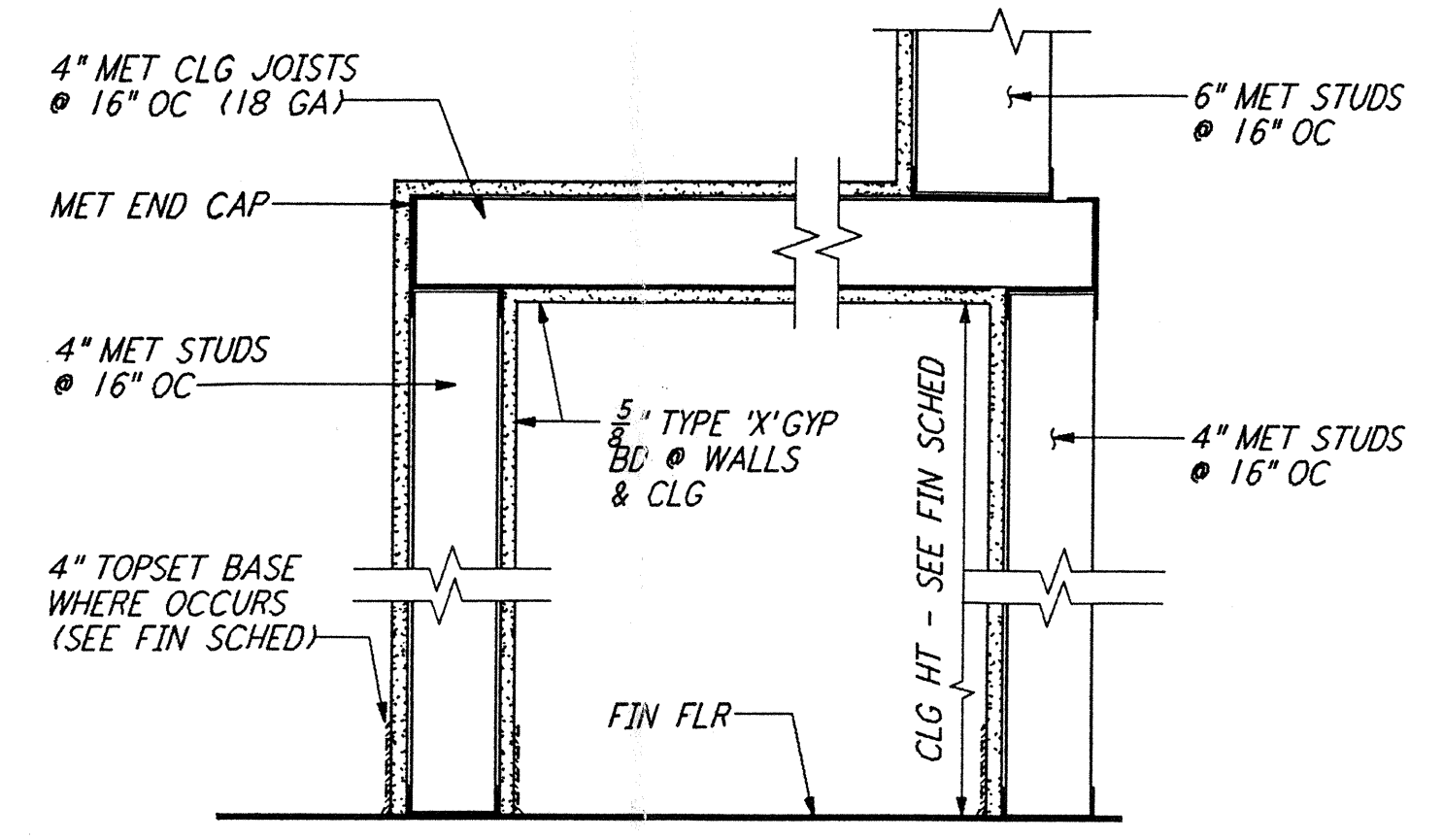
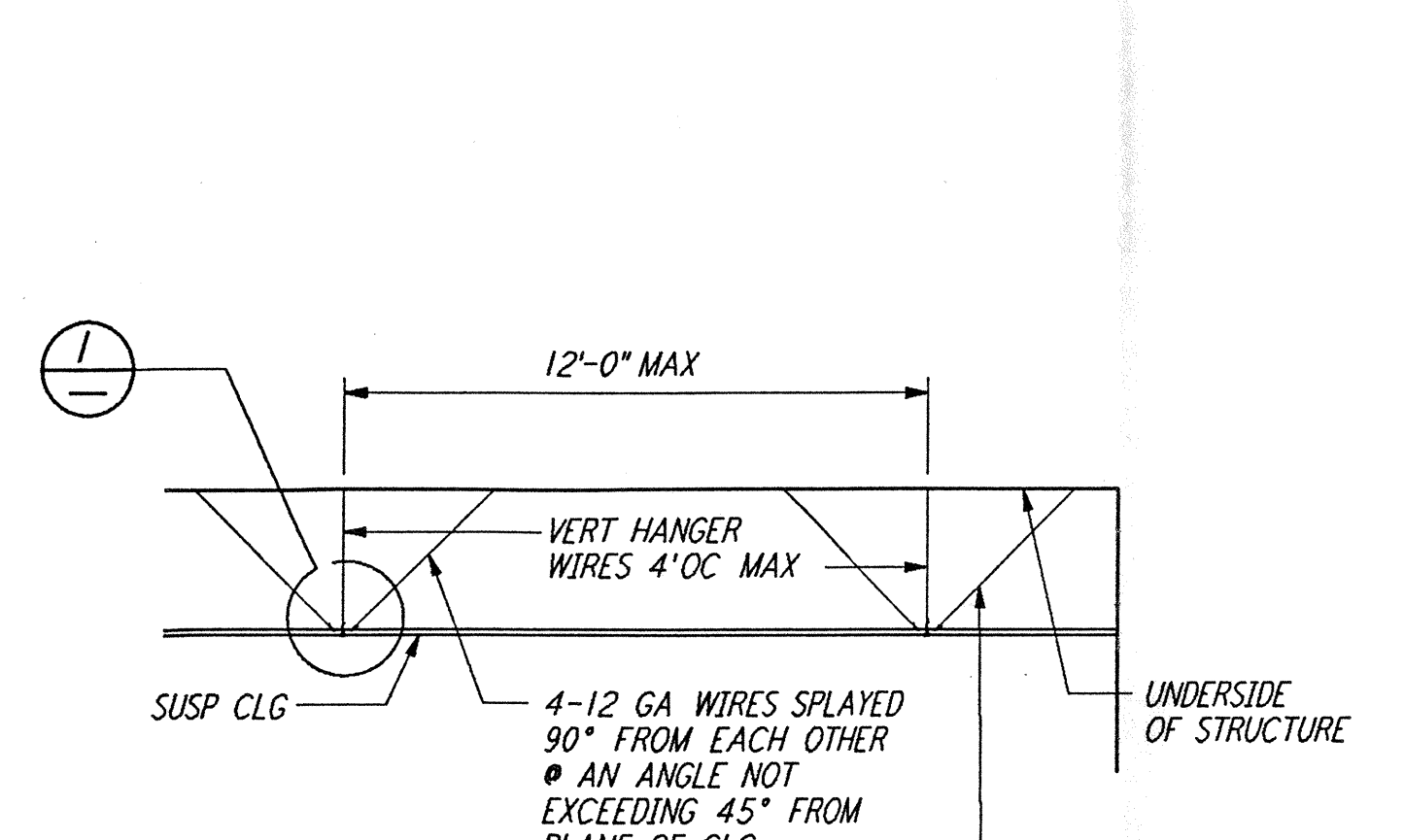


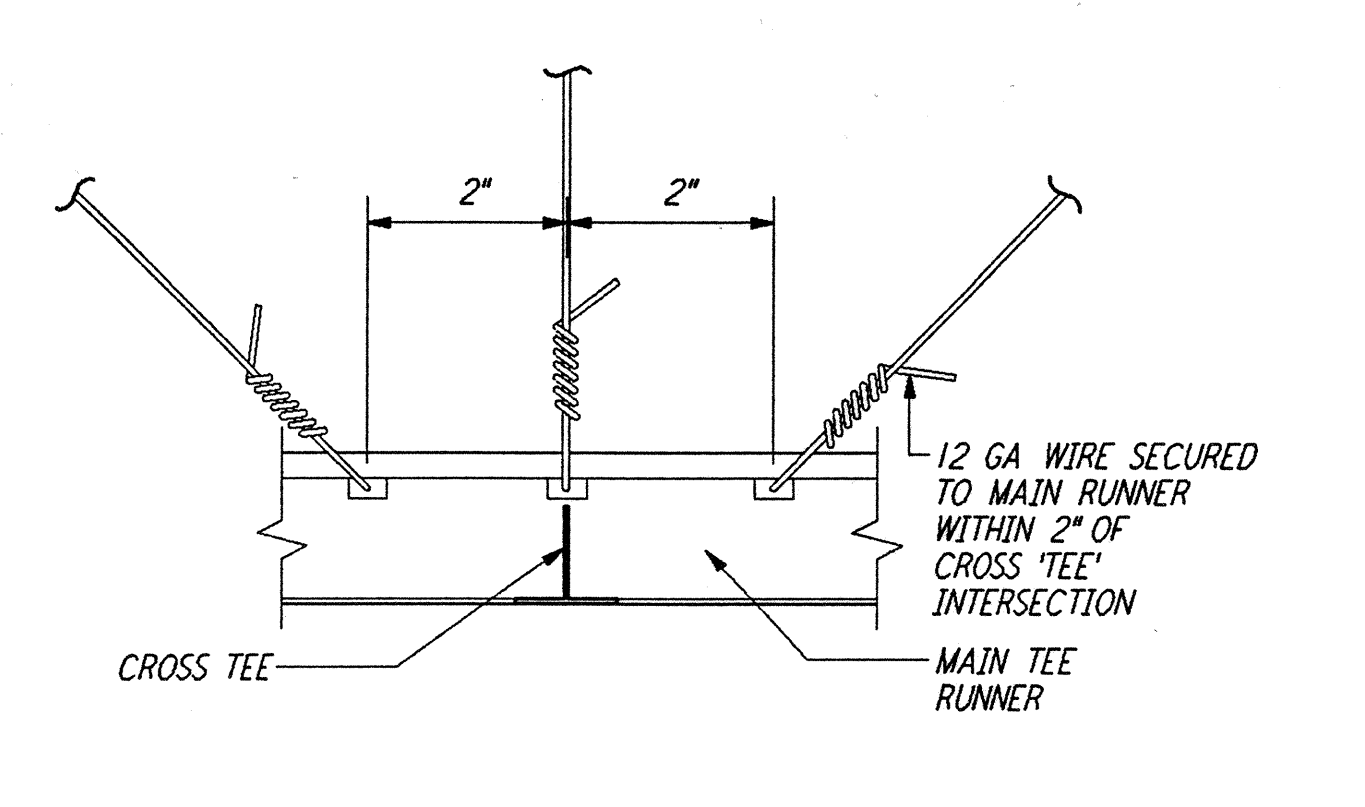
TOILET PARTITION MOUNTING
 1/2" = 1'-0"
 (12) REF
 WA-A-424 WA-A-111



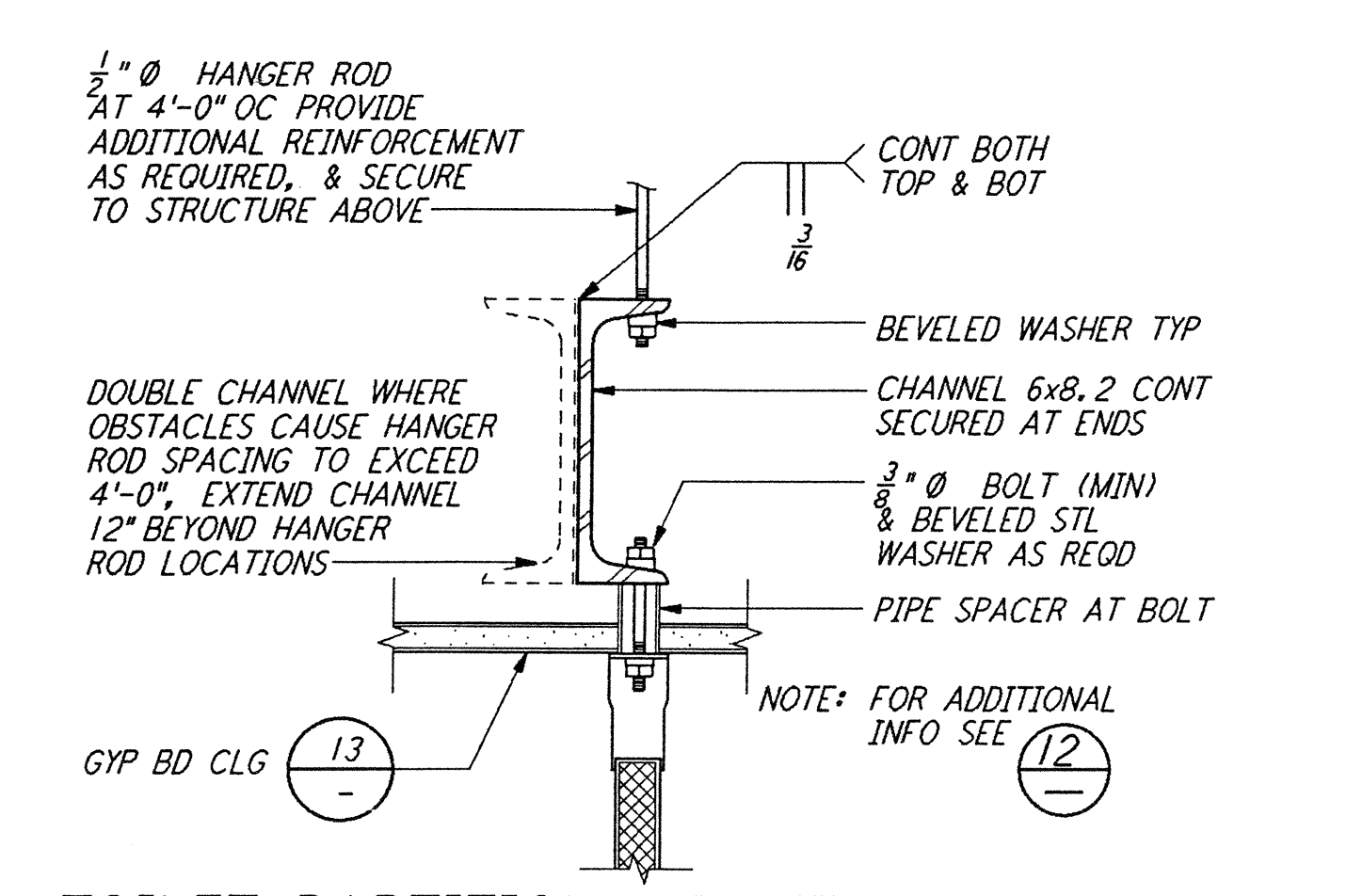
LVEA VESTIBULE
 1/2" = 1'-0"
 (8) REF
 WA-A-192 WA-A-424 WA-A-504



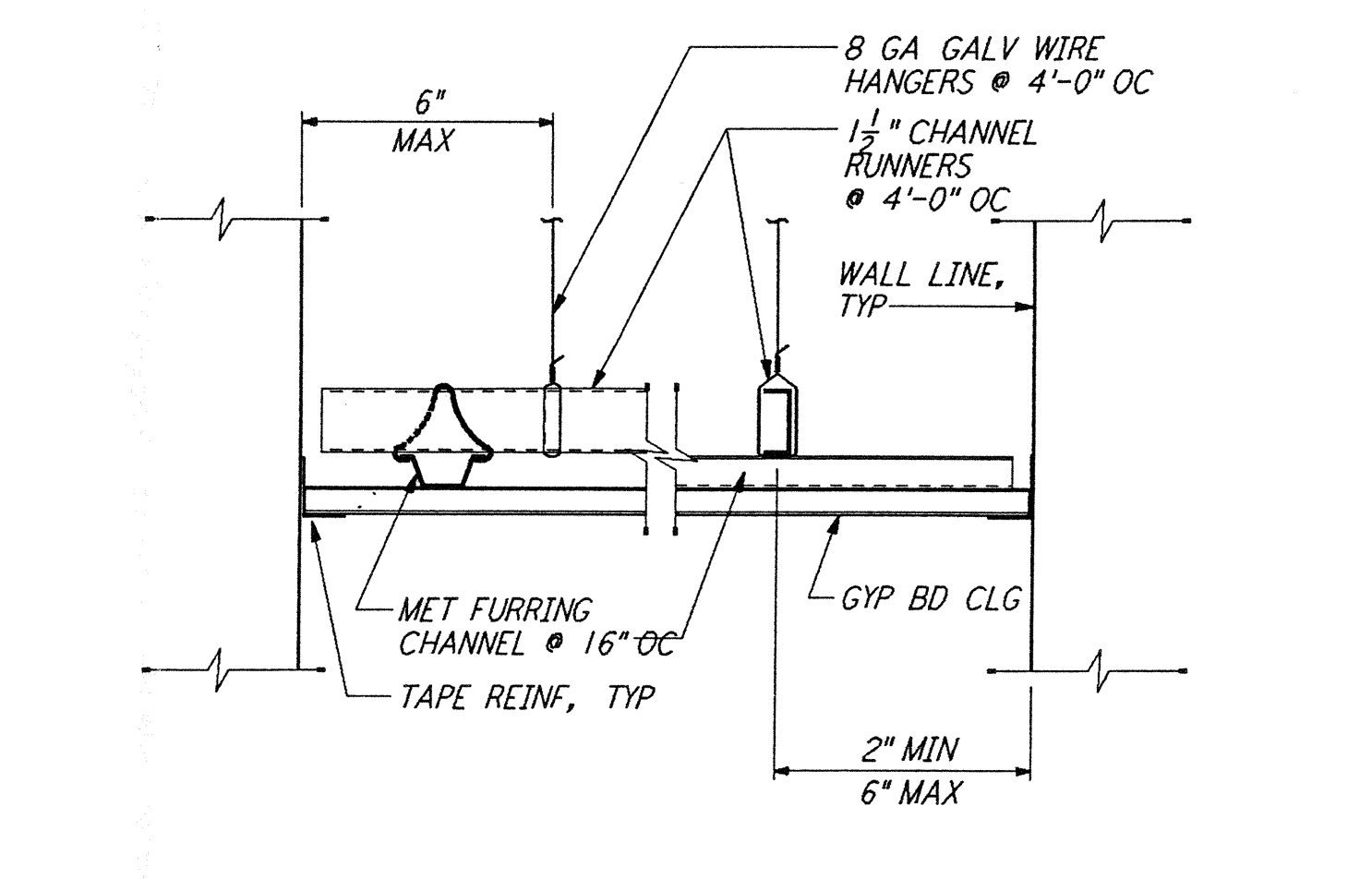
SUSP ACOUSTICAL CLG DET
 3" = 1'-0"
 (1) REF
 WA-A-424



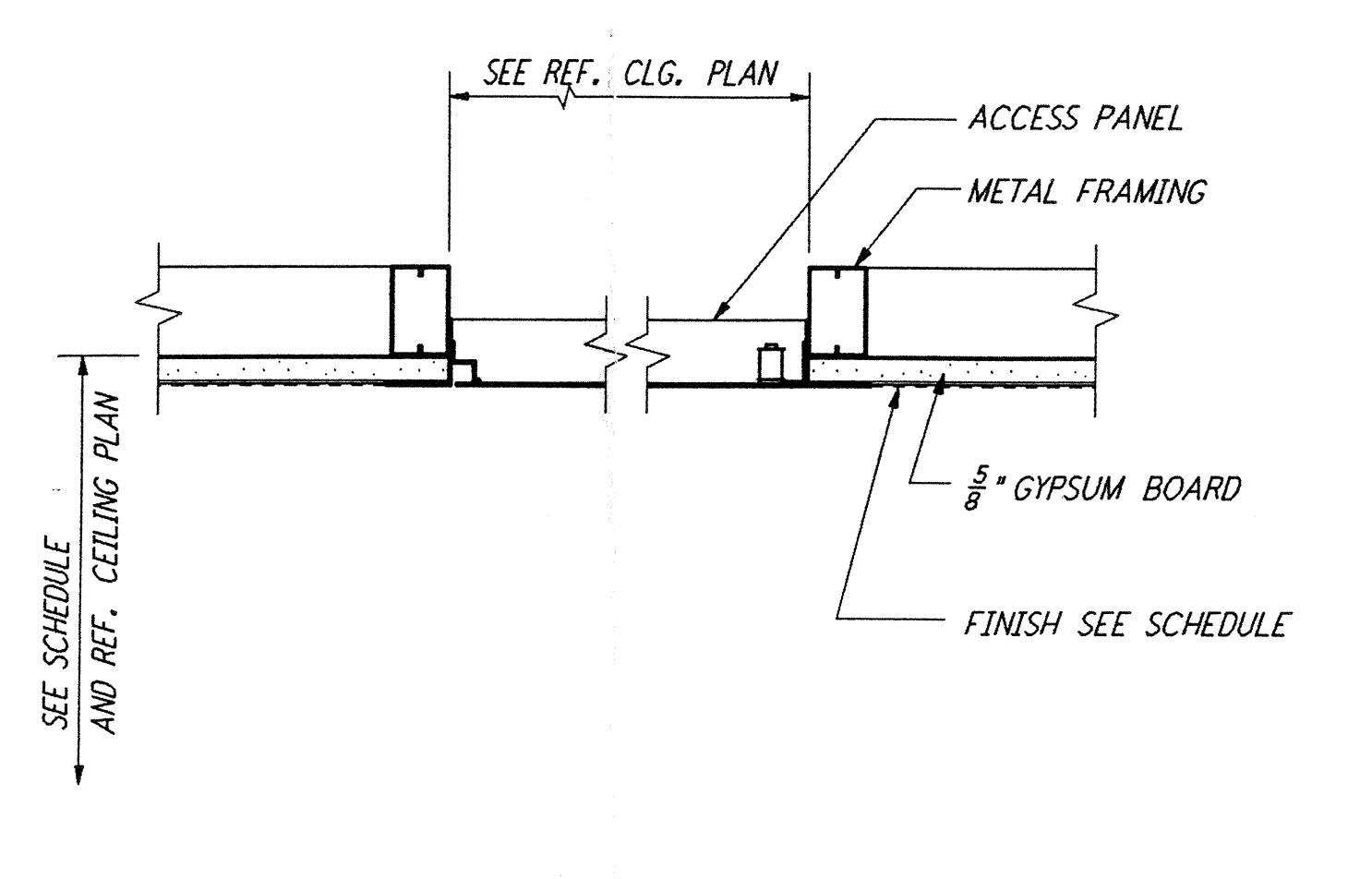
SUSP ACOUSTICAL CLG DET
 3" = 1'-0"
 (1) REF
 WA-A-424



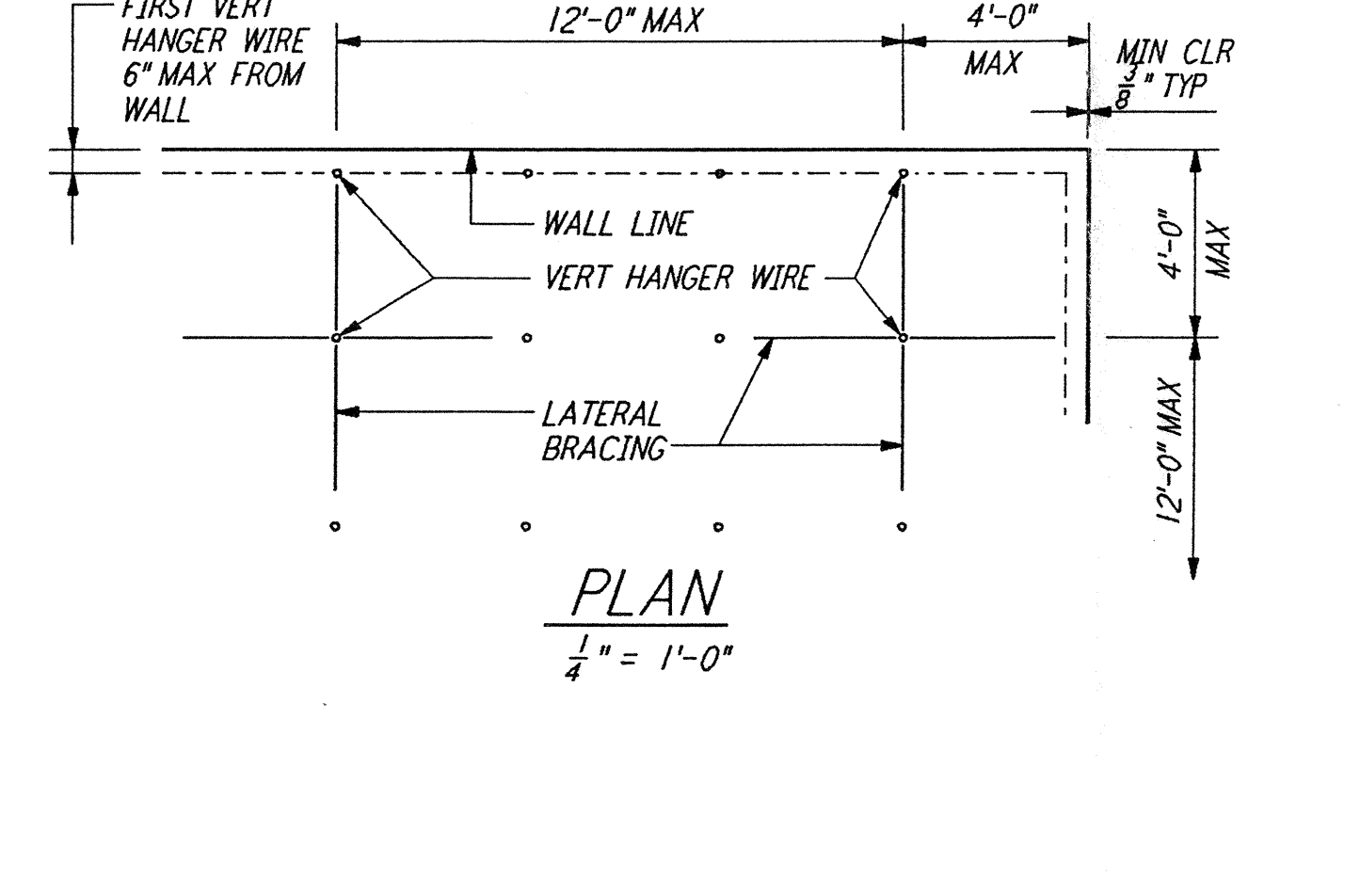
TOILET PARTITION MOUNTING
 3" = 1'-0"
 (16) REF
 WA-A-424



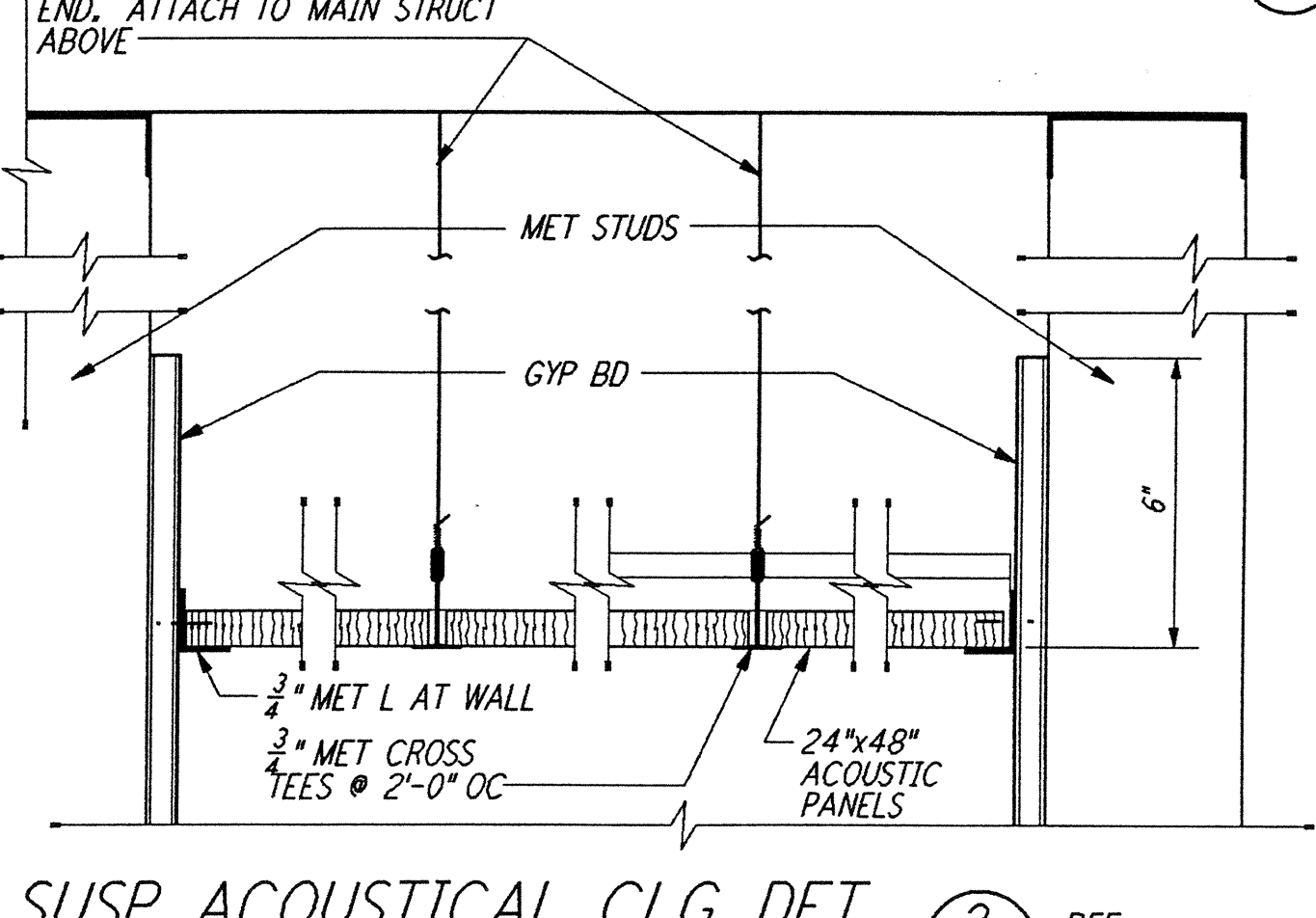
GYPSUM BOARD CEILING
 3" = 1'-0"
 (13) REF
 WA-A-124 WA-A-424 WA-A-521 WA-A-122



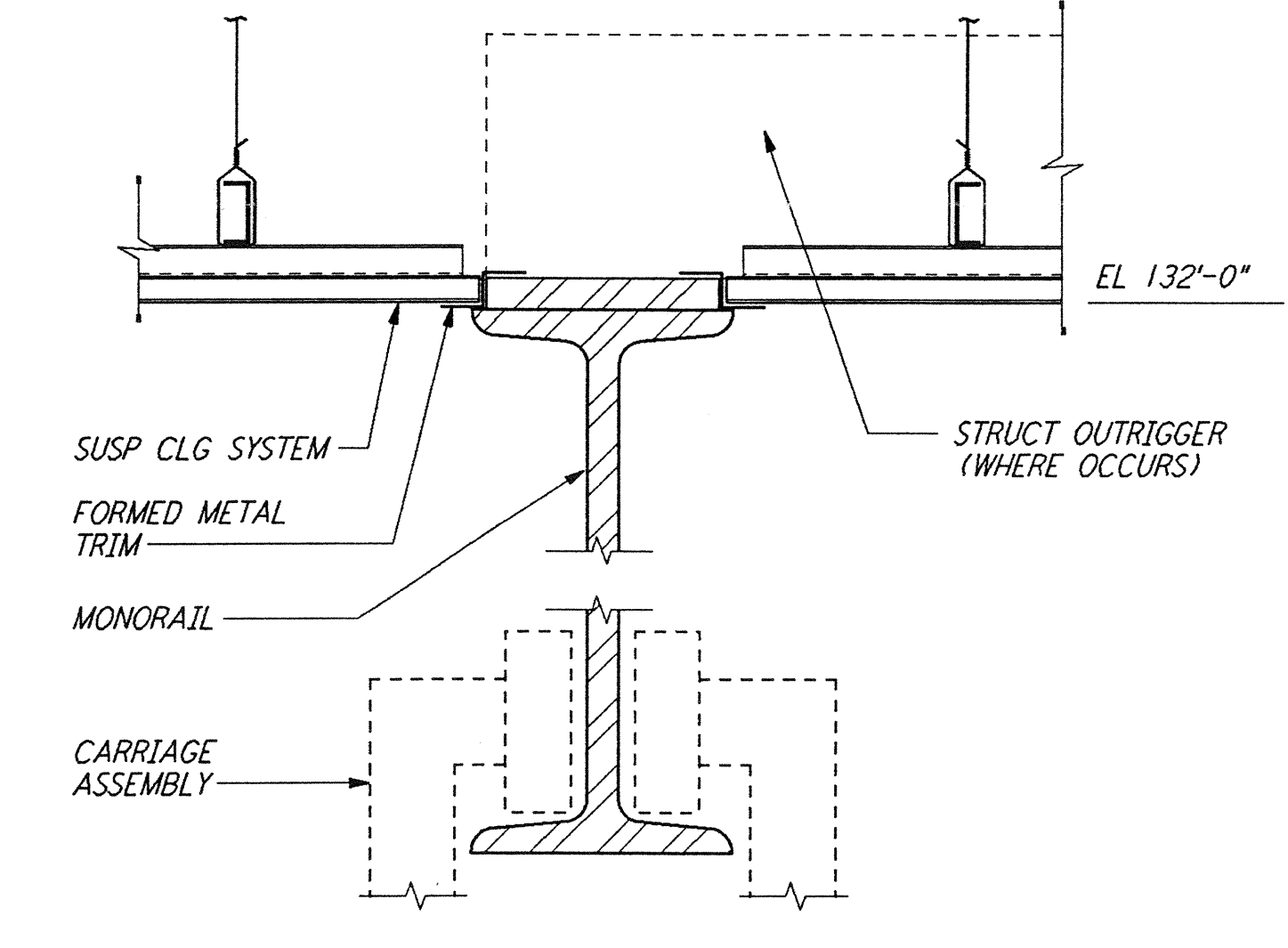
CEILING ACCESS PANEL DET
 1/2" = 1'-0"
 (9) REF
 WA-A-424



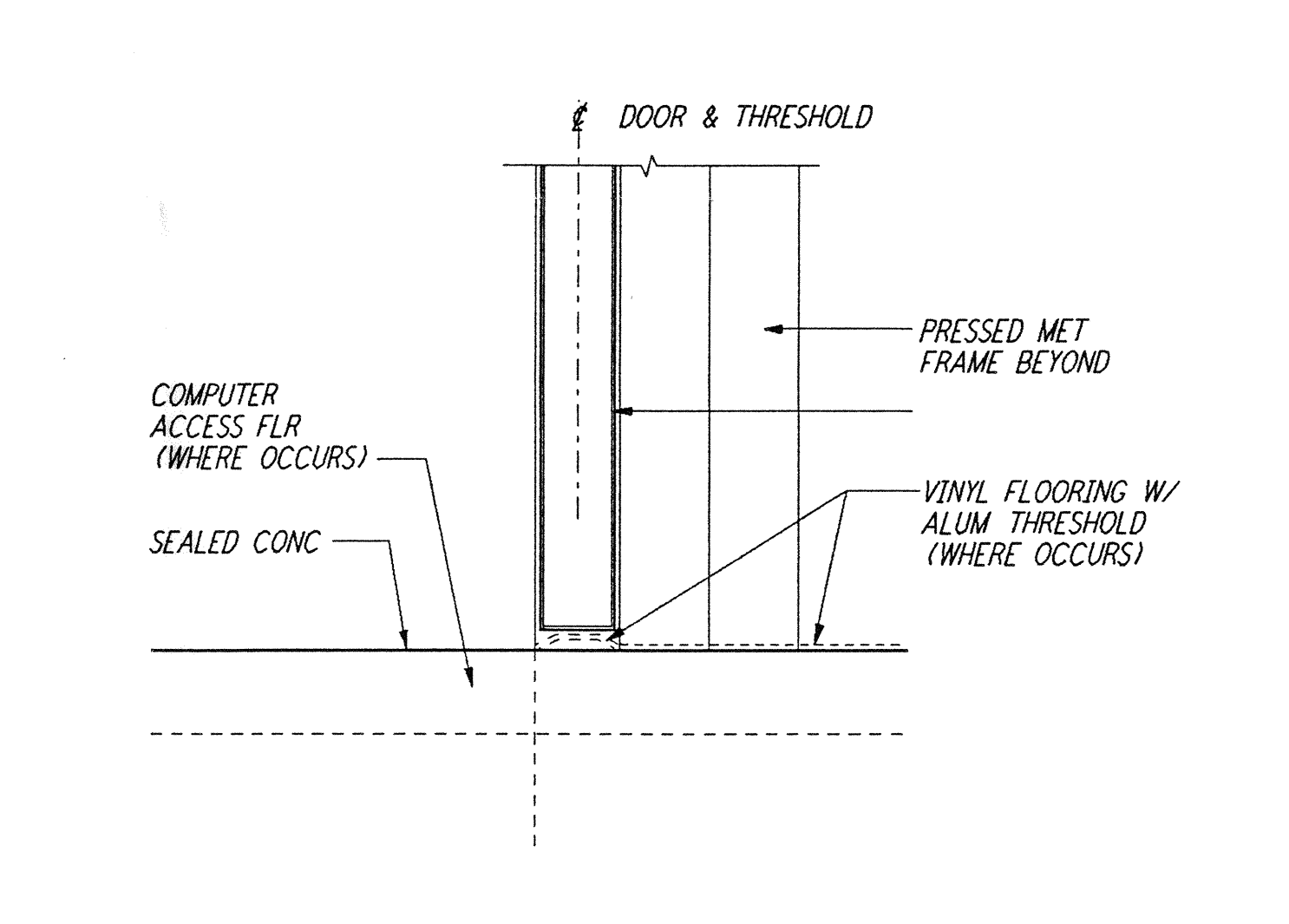
SUSP ACOUSTICAL CLG DET
 SCALE AS NOTED
 (5) REF
 WA-A-424 WA-A-424



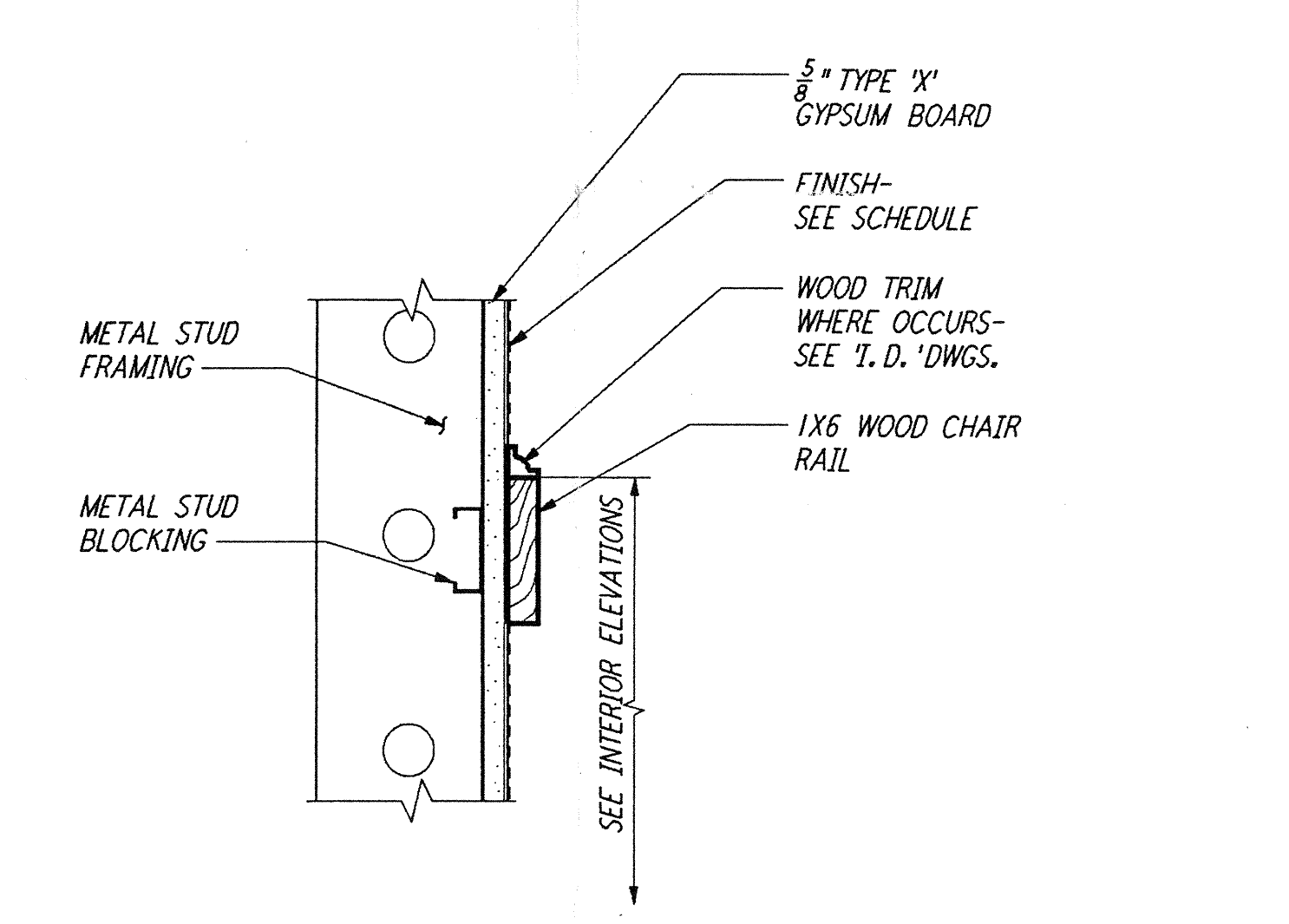
SUSP ACOUSTICAL CLG DET
 3" = 1'-0"
 (2) REF
 WA-A-124 WA-A-424 WA-A-521 WA-A-122 WA-A-123



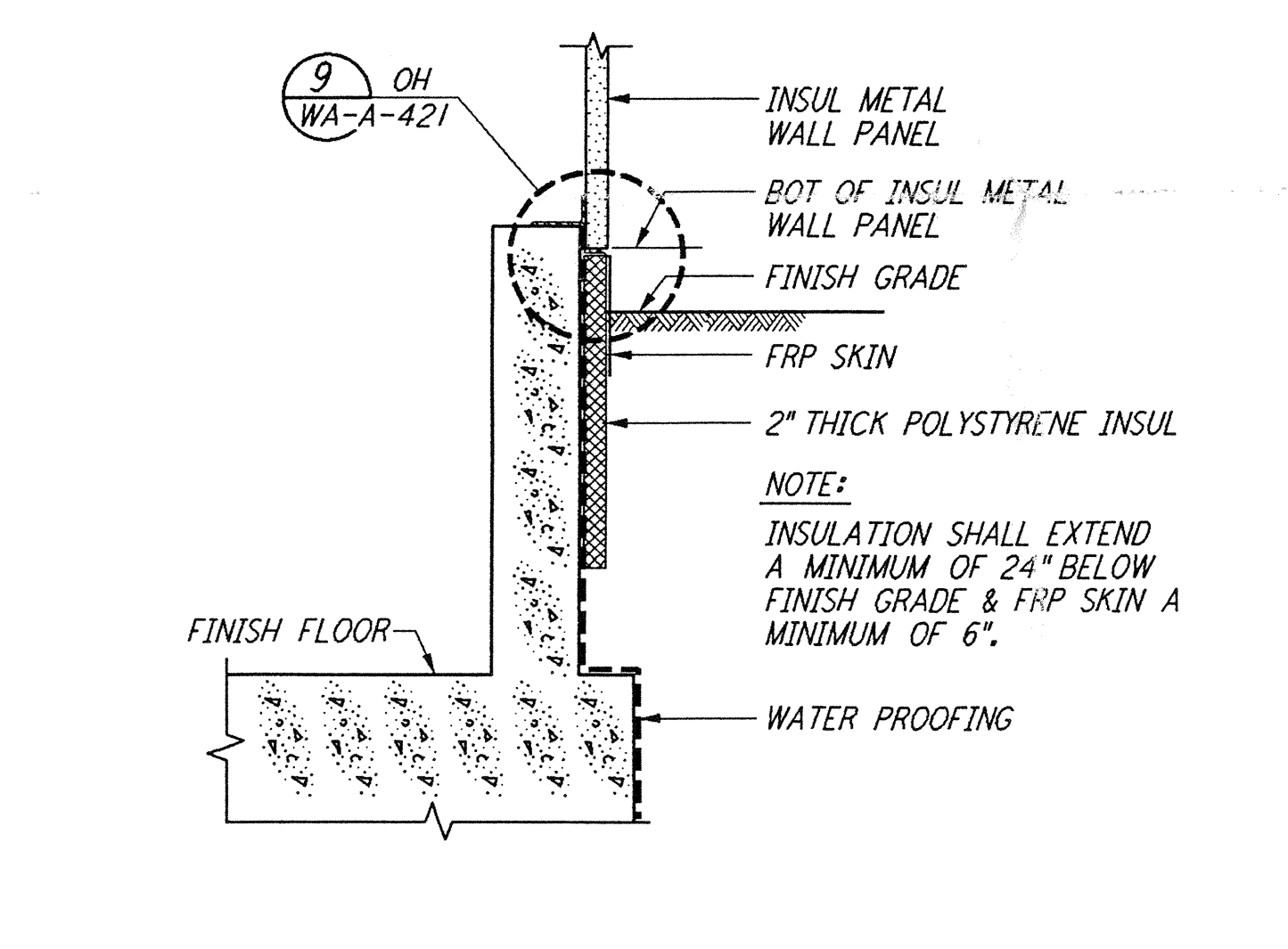
SUSP CLG AT MONORAIL
 3" = 1'-0"
 (17) REF
 WA-A-124 WA-A-424 WA-A-521 WA-A-151 WA-A-551



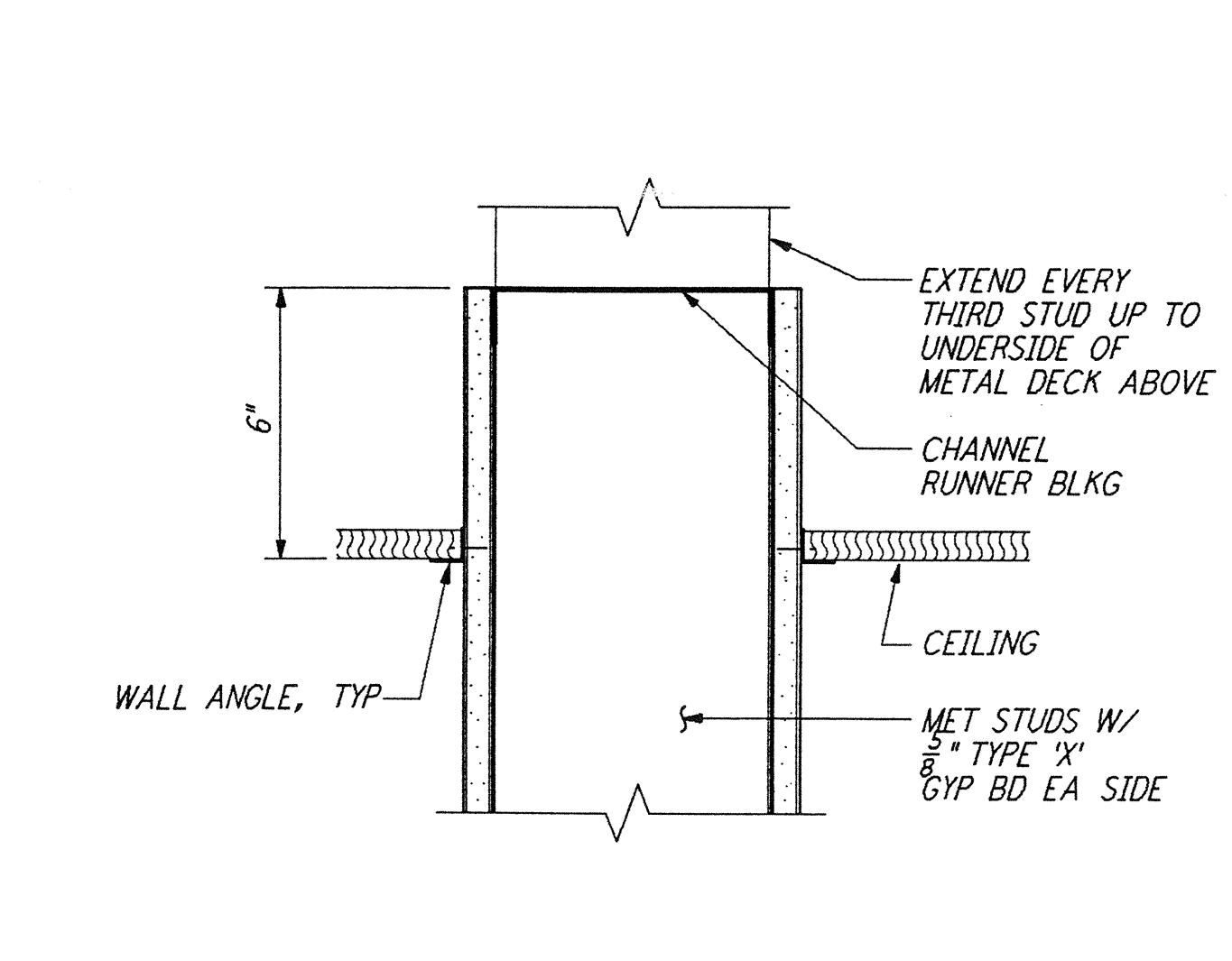
INT THRESHOLD DETAIL
 3" = 1'-0"
 (14) REF
 WA-A-424



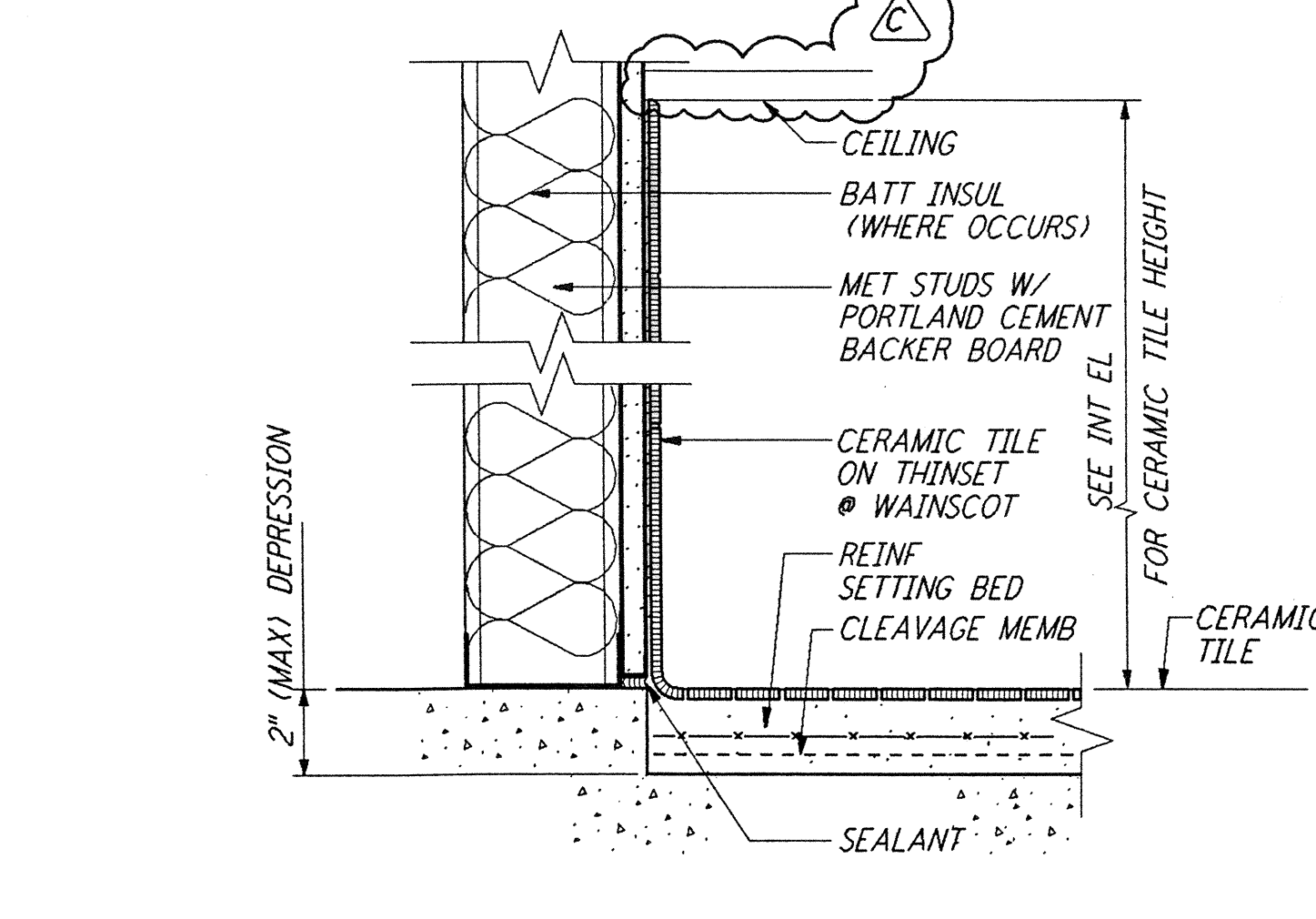
CHAIR RAIL
 3" = 1'-0"
 (10) REF
 WA-A-424 WA-A-111



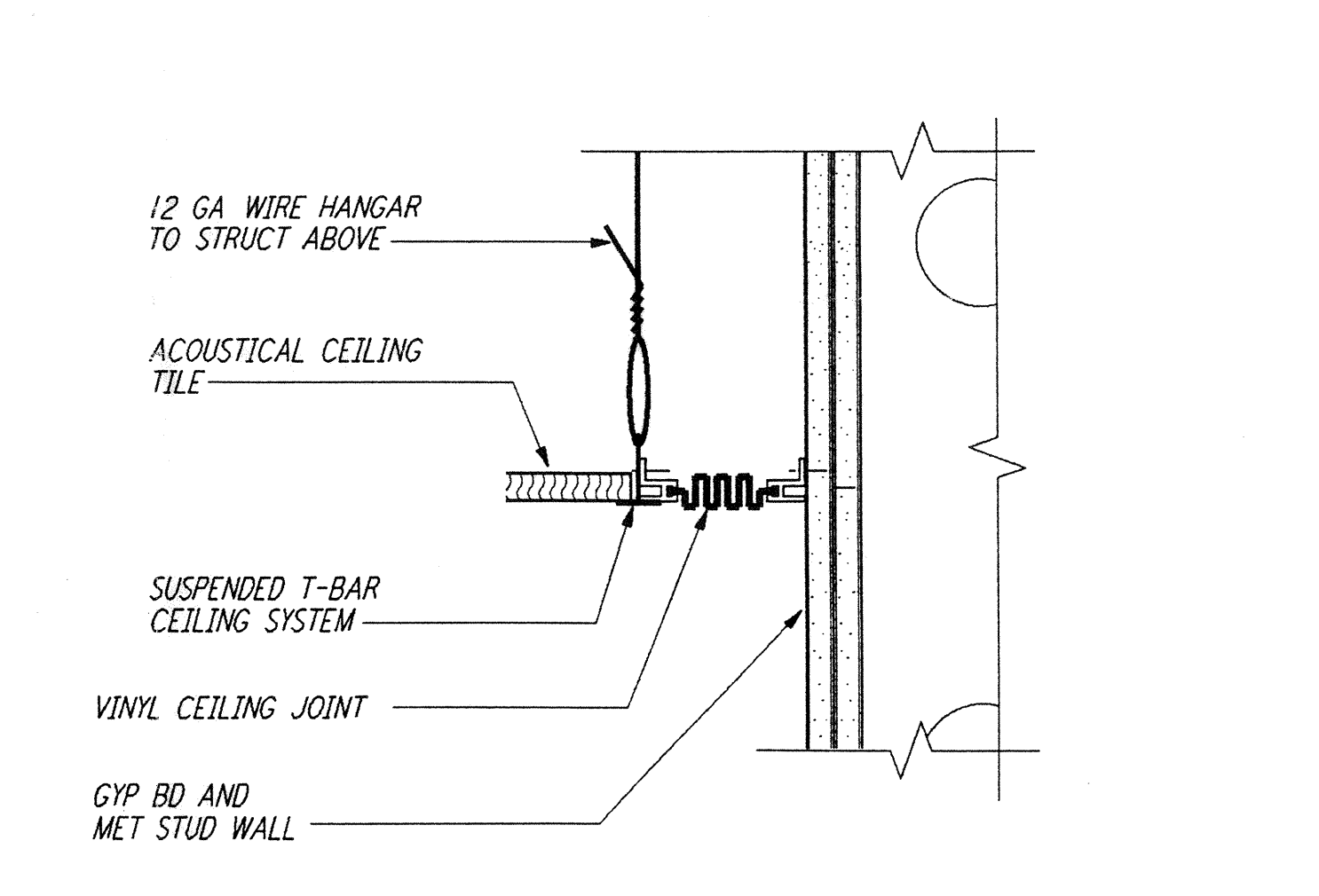
PERIMETER INSUL FOR FDN
 3/4" = 1'-0"
 (6) REF
 WA-A-424



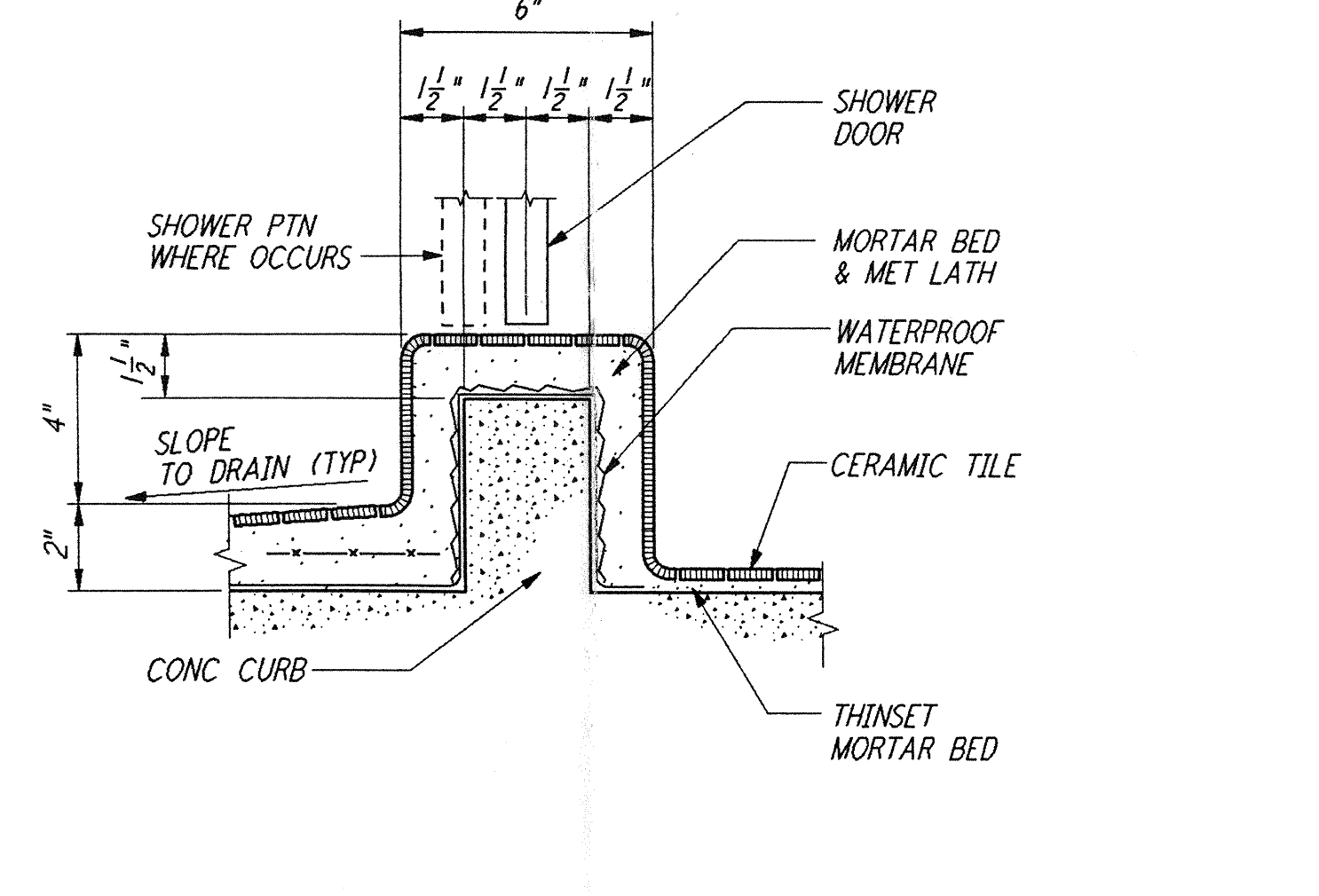
SUSP CLG @ PARTITION DET
 3" = 1'-0"
 (3) REF
 WA-A-424 WA-A-161 WA-A-162



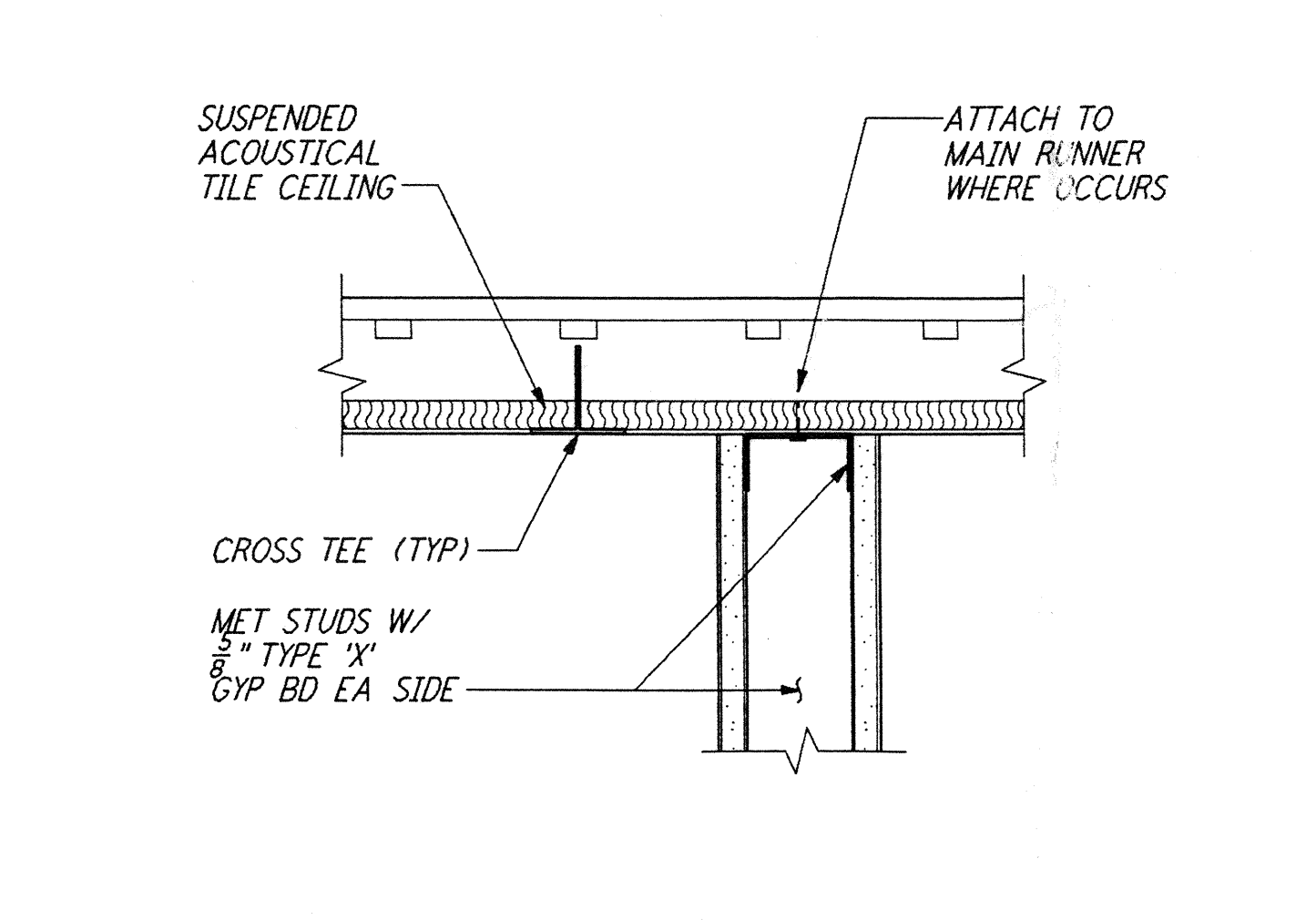
WAINSCOT DETAIL
 3" = 1'-0"
 (18) REF
 WA-A-424



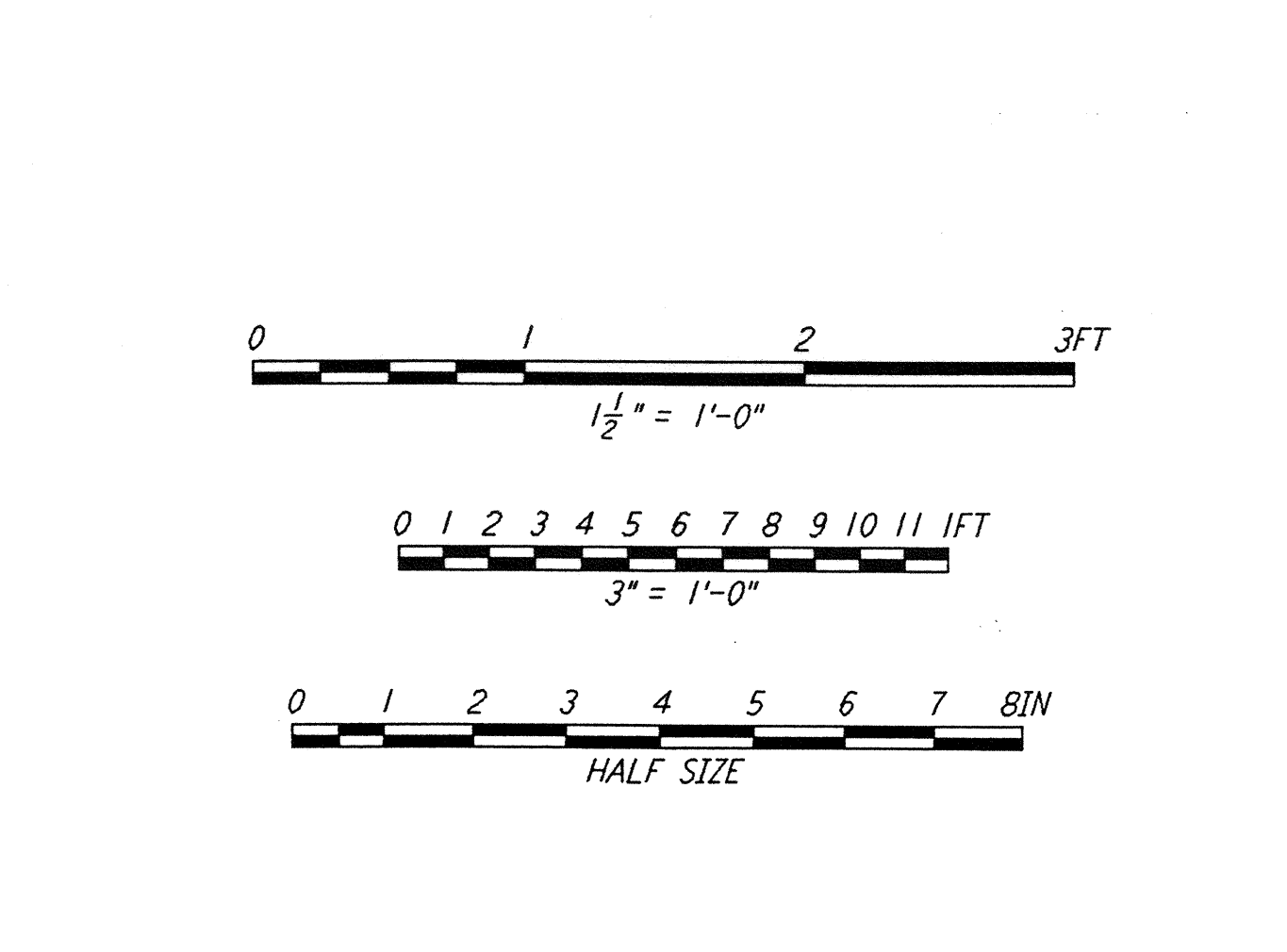
INT CEILING EXPANSION JT
 3" = 1'-0"
 (15) REF
 WA-A-424 WA-A-163



SHOWER CURB DETAIL
 3" = 1'-0"
 (11) REF
 WA-A-424 WA-A-111



STUD WALL TO CLG DETAIL
 1" = 1'-0"
 (7) REF
 WA-A-162 WA-A-424 WA-A-552 WA-A-193 WA-A-553



LIGO-D960268-C-0

This document and the design it covers are the property of PARSONS. They are loaned only with the borrower's expressed written agreement that they will not be reproduced, copied, loaned, exhibited, or used in any other way, except by written consent from PARSONS to the borrower.

NO.	DATE	BY	CHKD	ENGR	PROJ	DESCRIPTION
C	5-22-96	BK	BK	SF	TDM	BID ADDENDUM #2
B	4-19-96	SF	SF	SF	TDM	FINAL DESIGN REVIEW & BID
A	01/17/96	SF	SF	SF	TDM	PRELIMINARY DESIGN REVIEW

NO.	DATE	BY	CHKD	ENGR	PROJ	DESCRIPTION

NO.	DATE	BY	CHKD	ENGR	PROJ	DESCRIPTION

NO.	DATE	BY	CHKD	ENGR	PROJ	DESCRIPTION

NO.	DATE	BY	CHKD	ENGR	PROJ	DESCRIPTION

PARSONS
 100 WEST WALNUT STREET
 PASADENA, CALIFORNIA

LIGO
 CALIFORNIA INSTITUTE OF TECHNOLOGY
 MASSACHUSETTS INSTITUTE OF TECHNOLOGY

LASER INTERFEROMETER
 GRAVITATIONAL-WAVE OBSERVATORY
 SITE NO. 1 - HANFORD, WASHINGTON

TITLE	ARCHITECTURAL CEILING & MISCELLANEOUS INTERIOR DETAILS	SCALE	AS NOTED	CONTRACT NUMBER	PP150969	PROJECT NUMBER	8094
SHEET NUMBER	WA-A-424	REVISIONS					