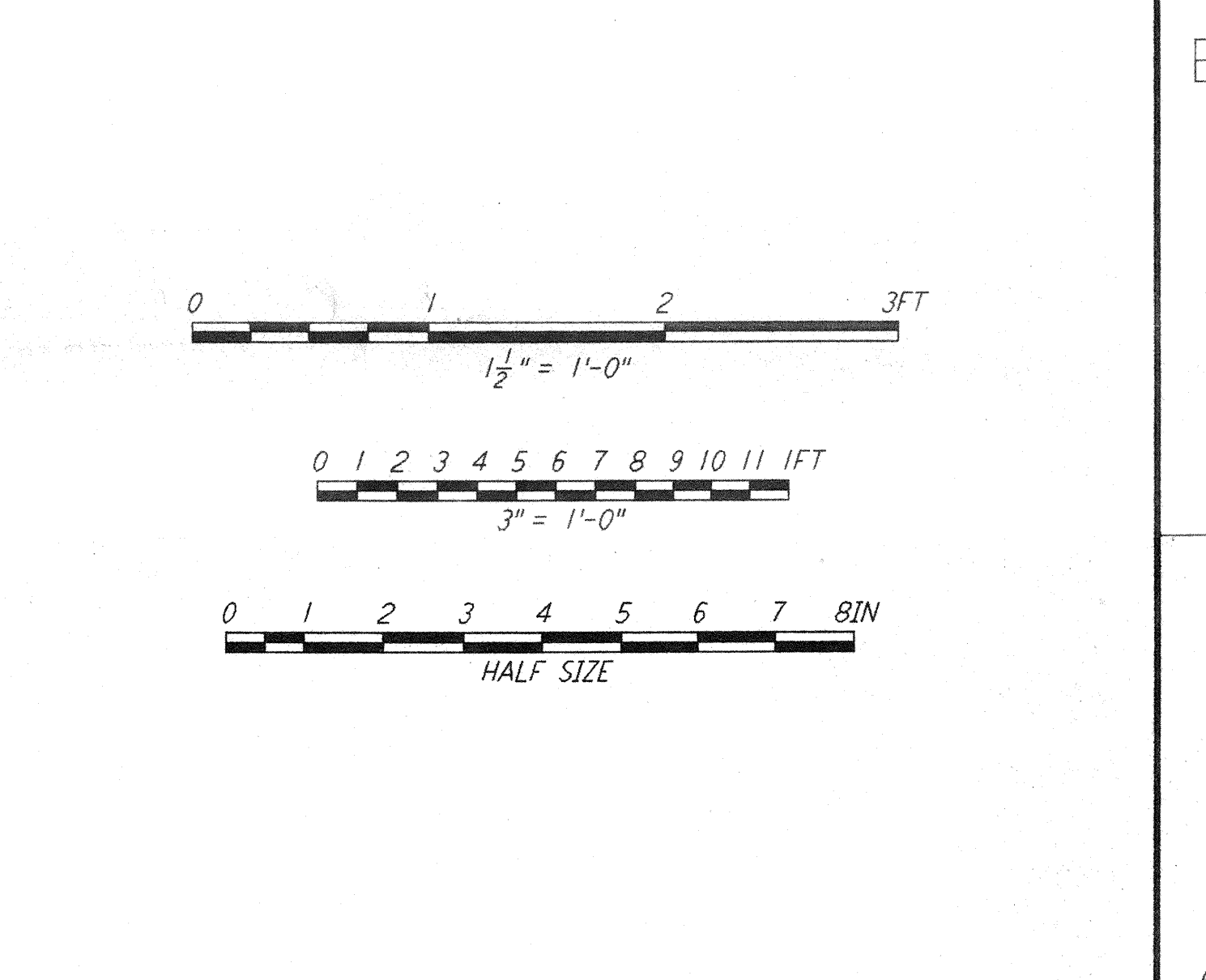
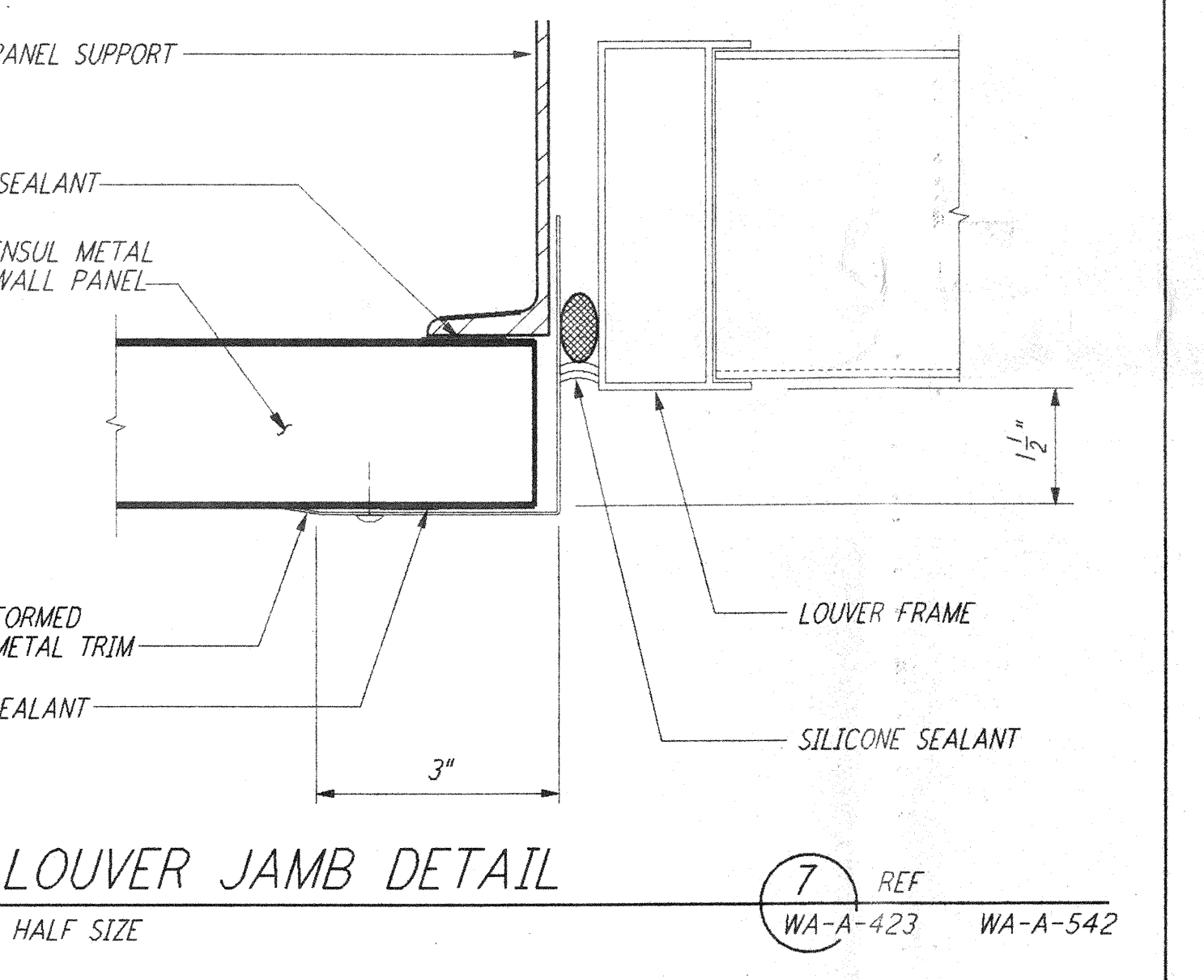
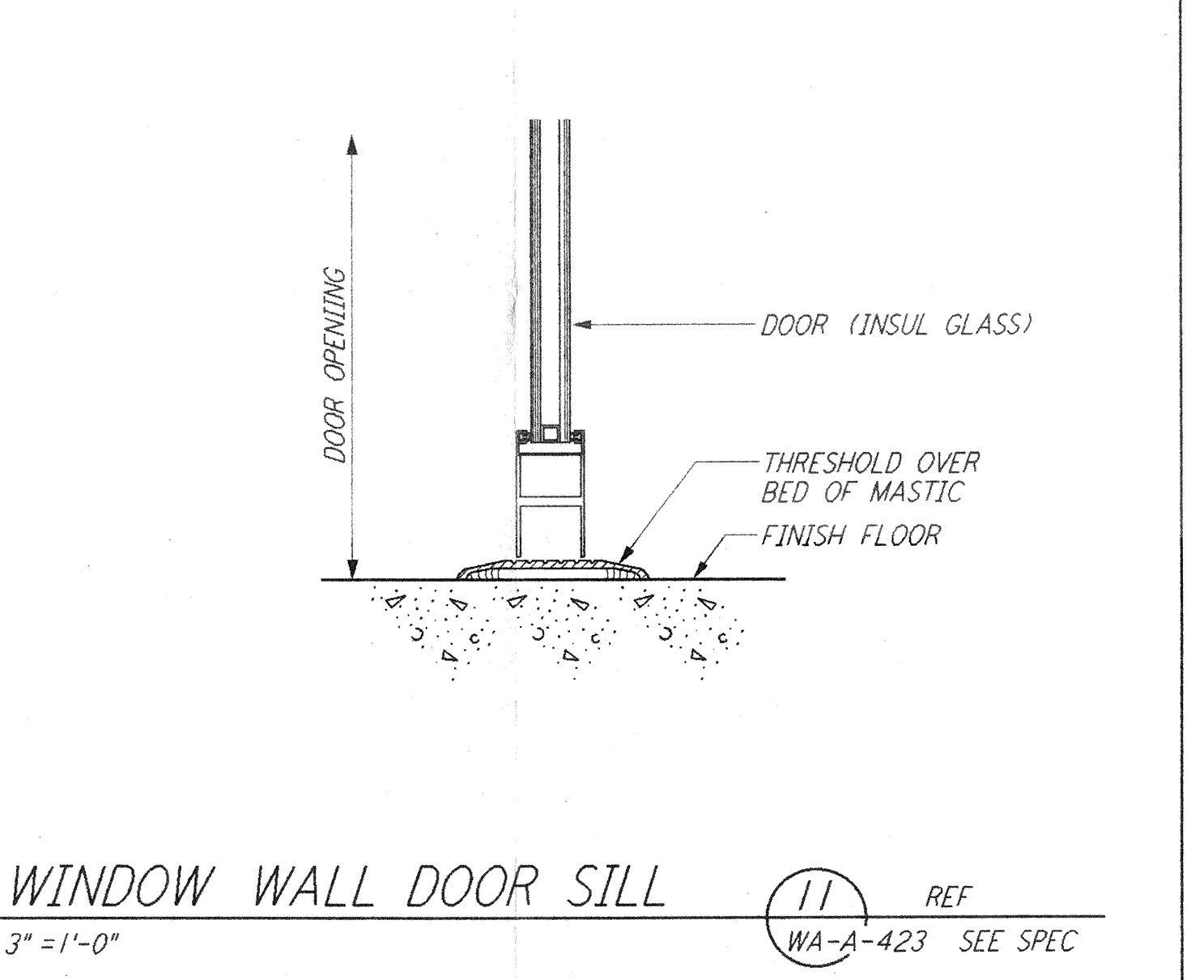
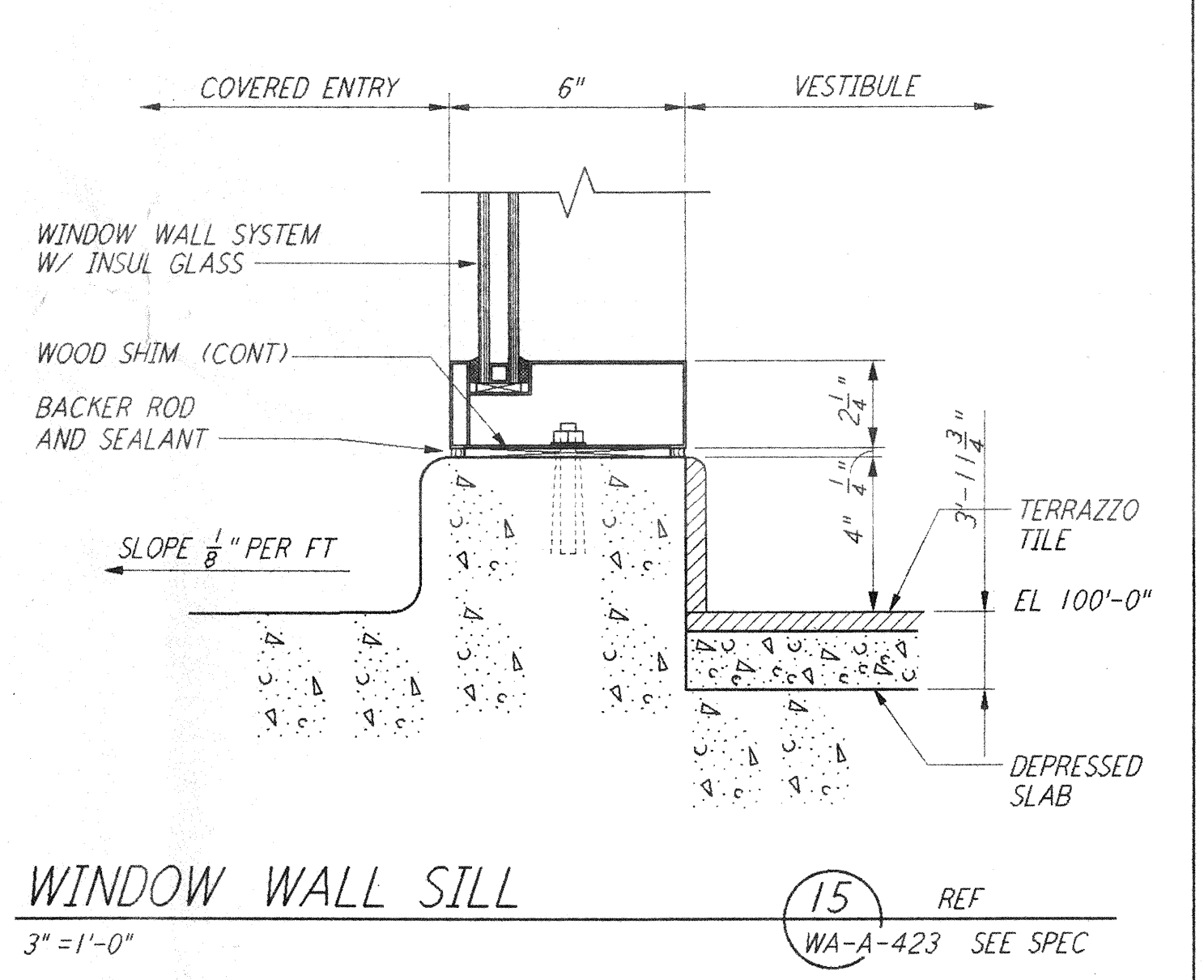
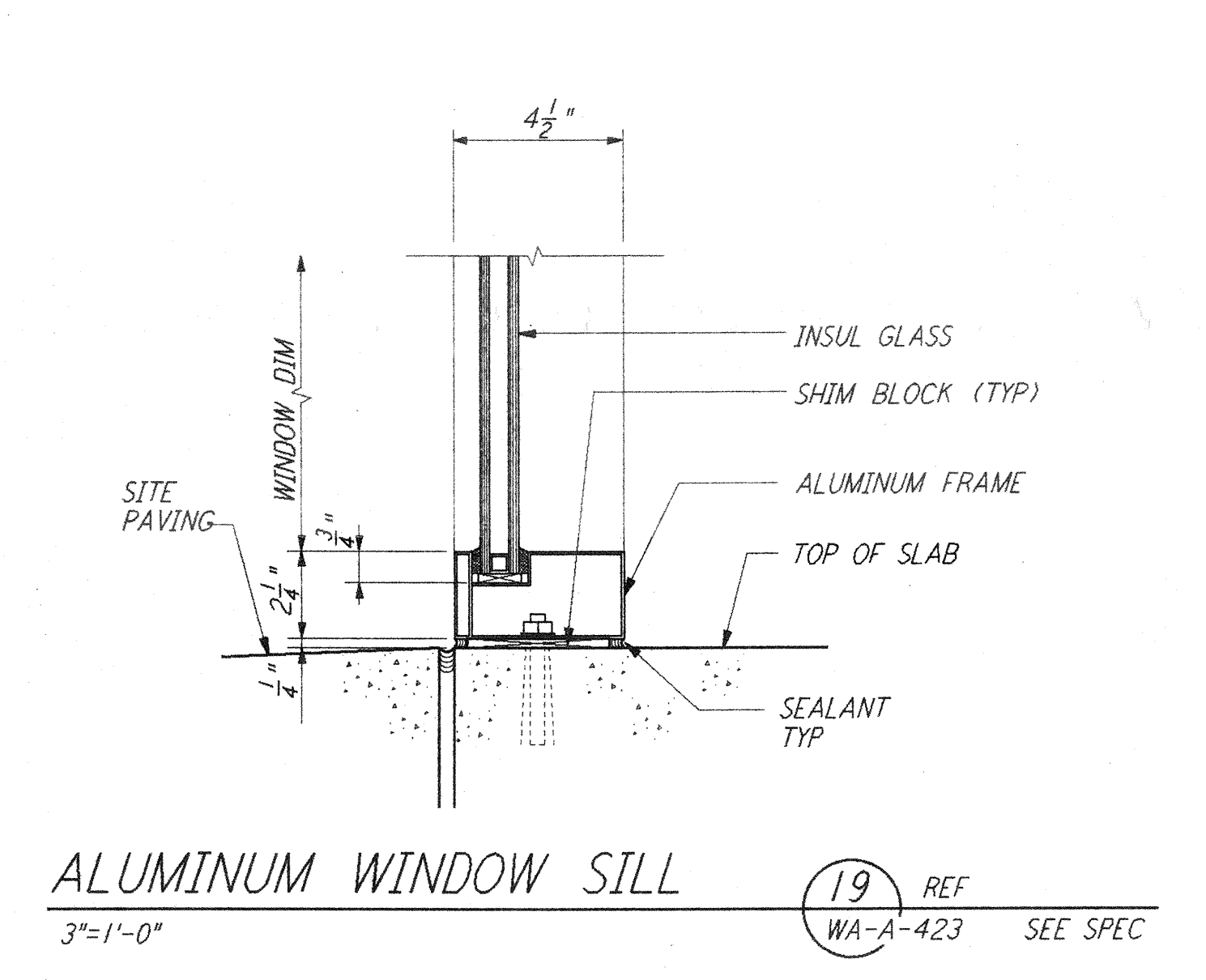
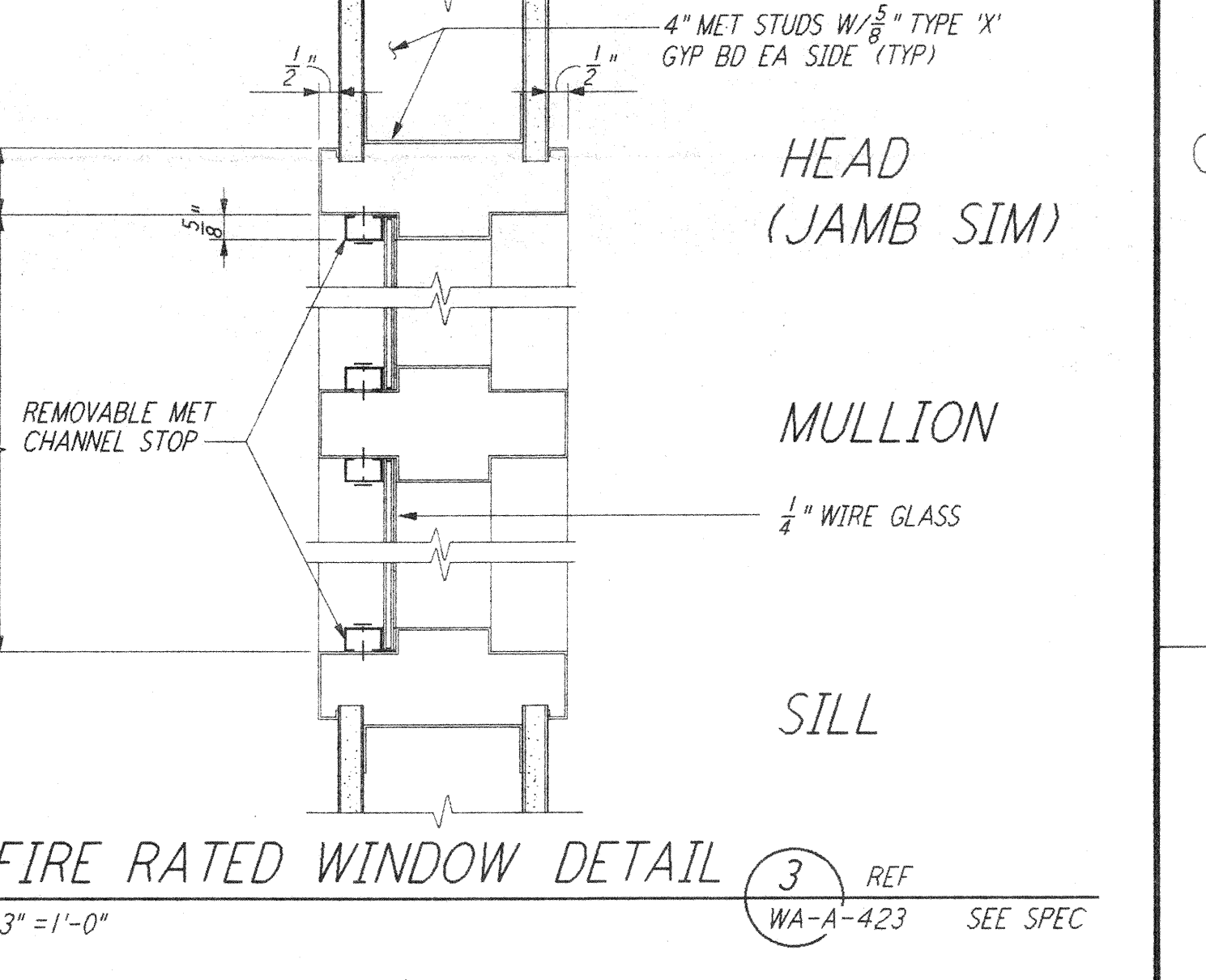
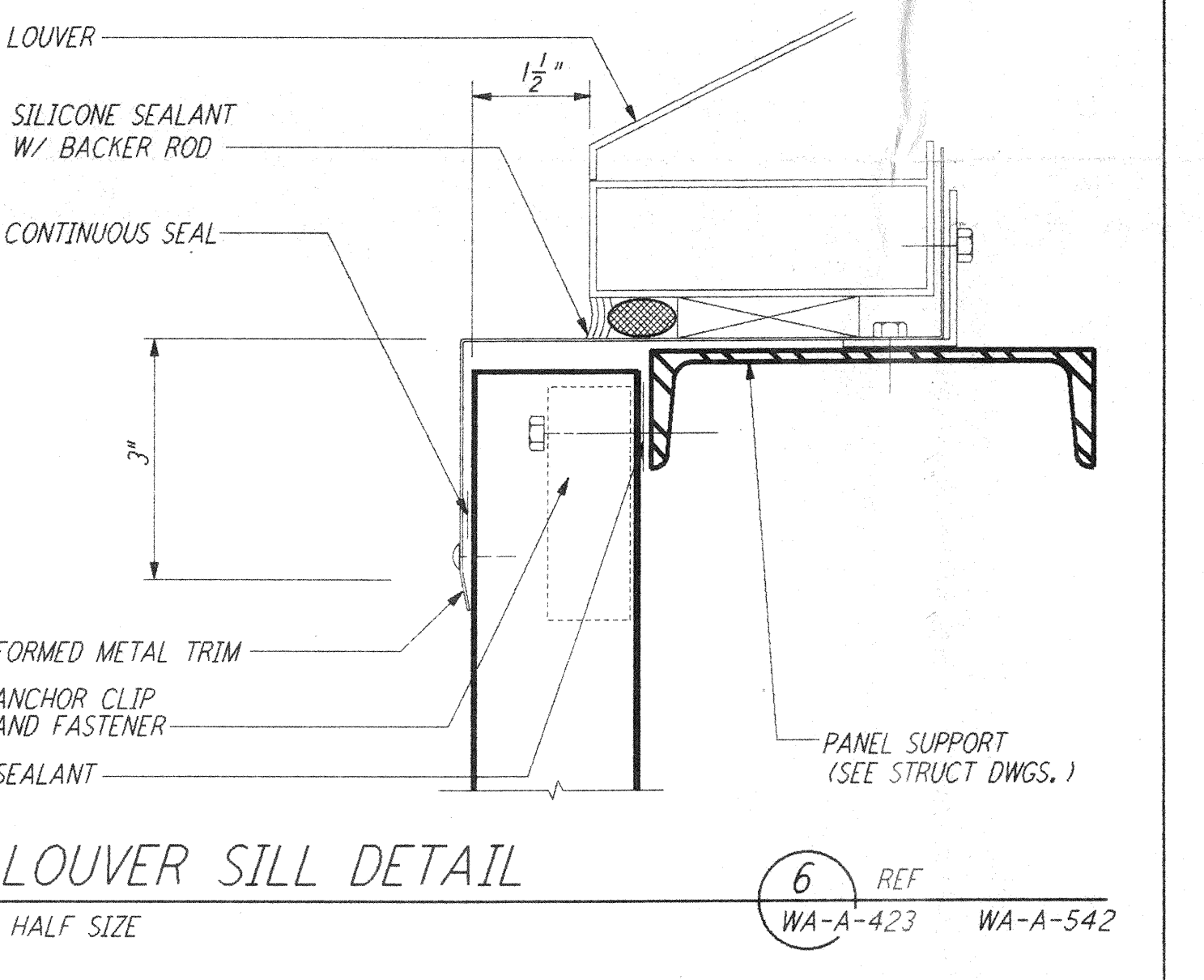
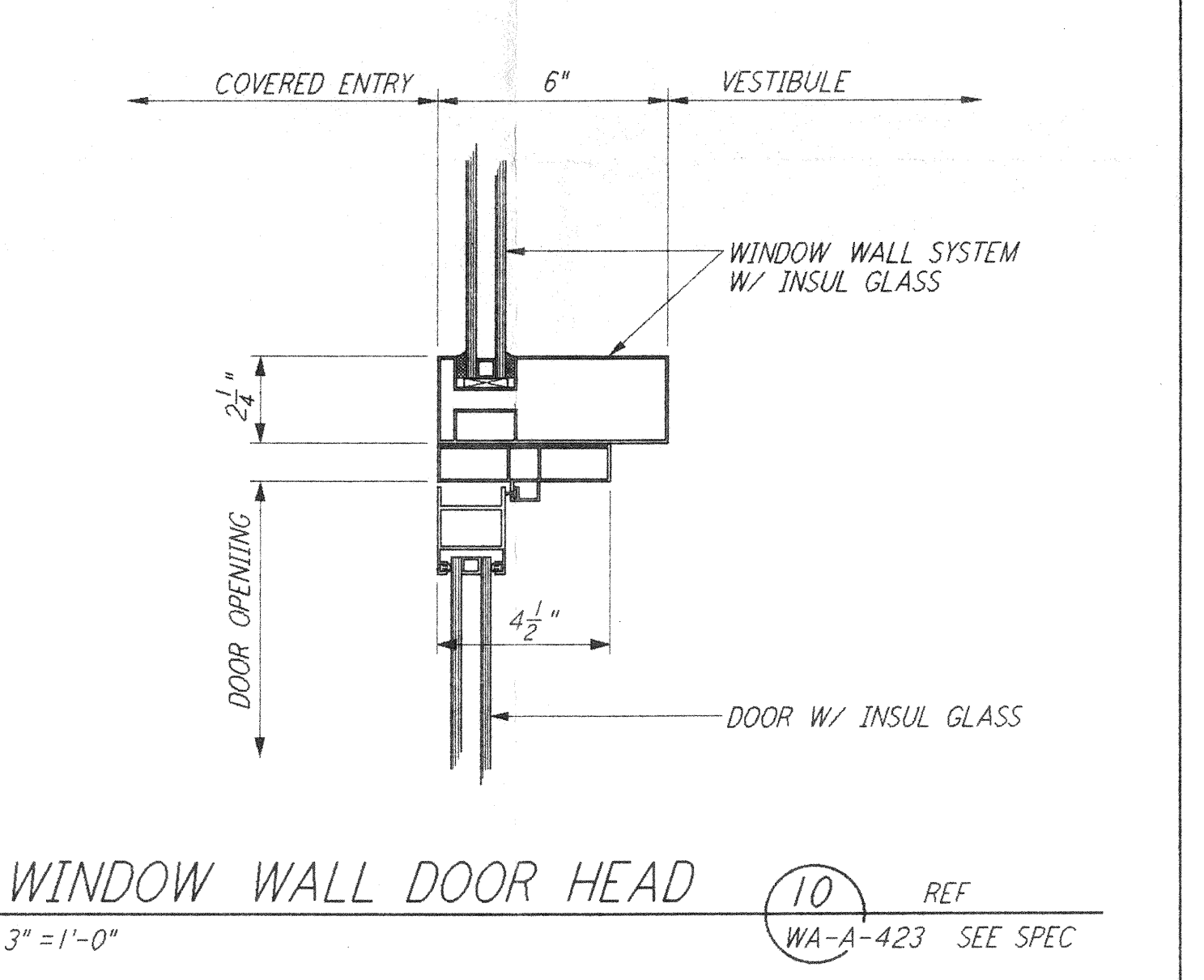
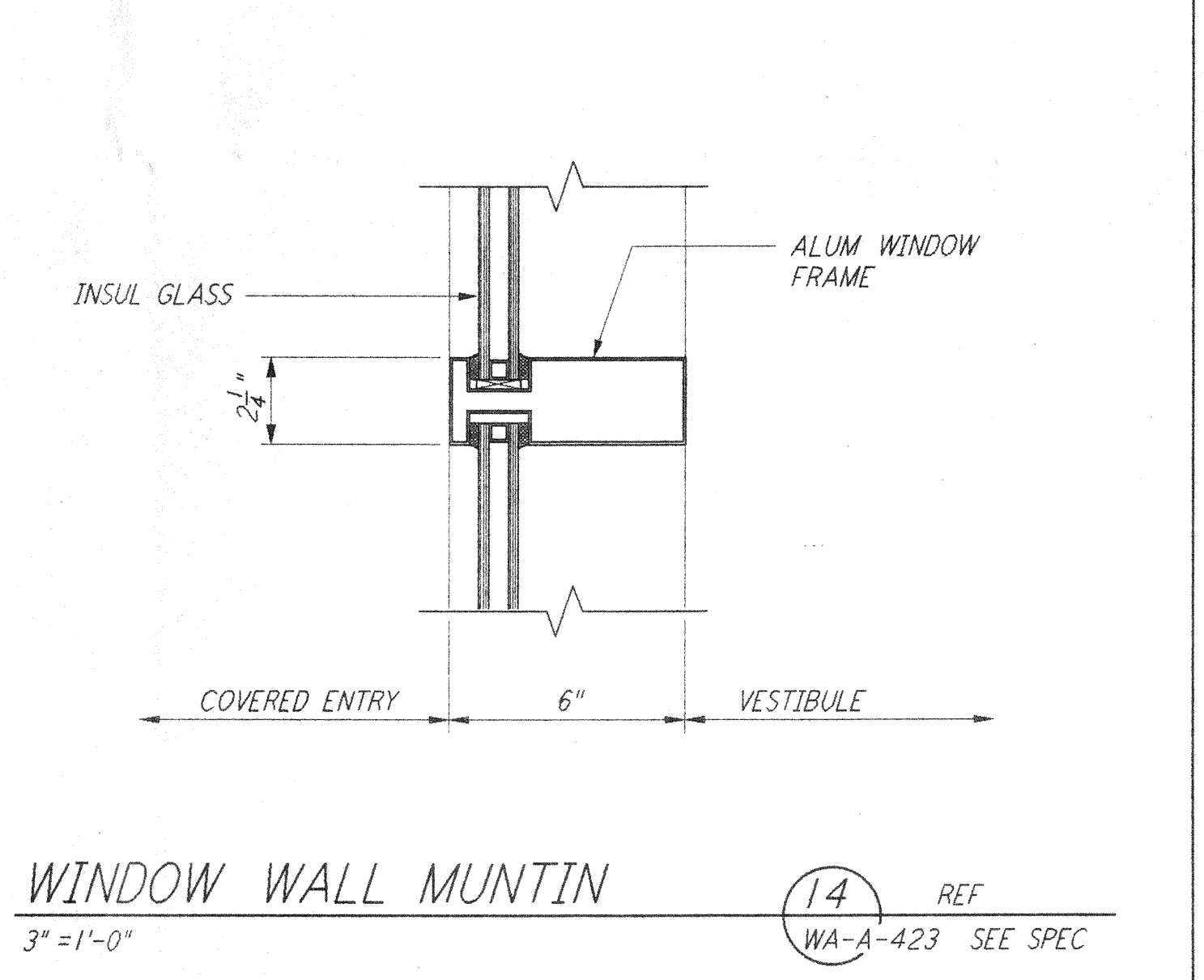
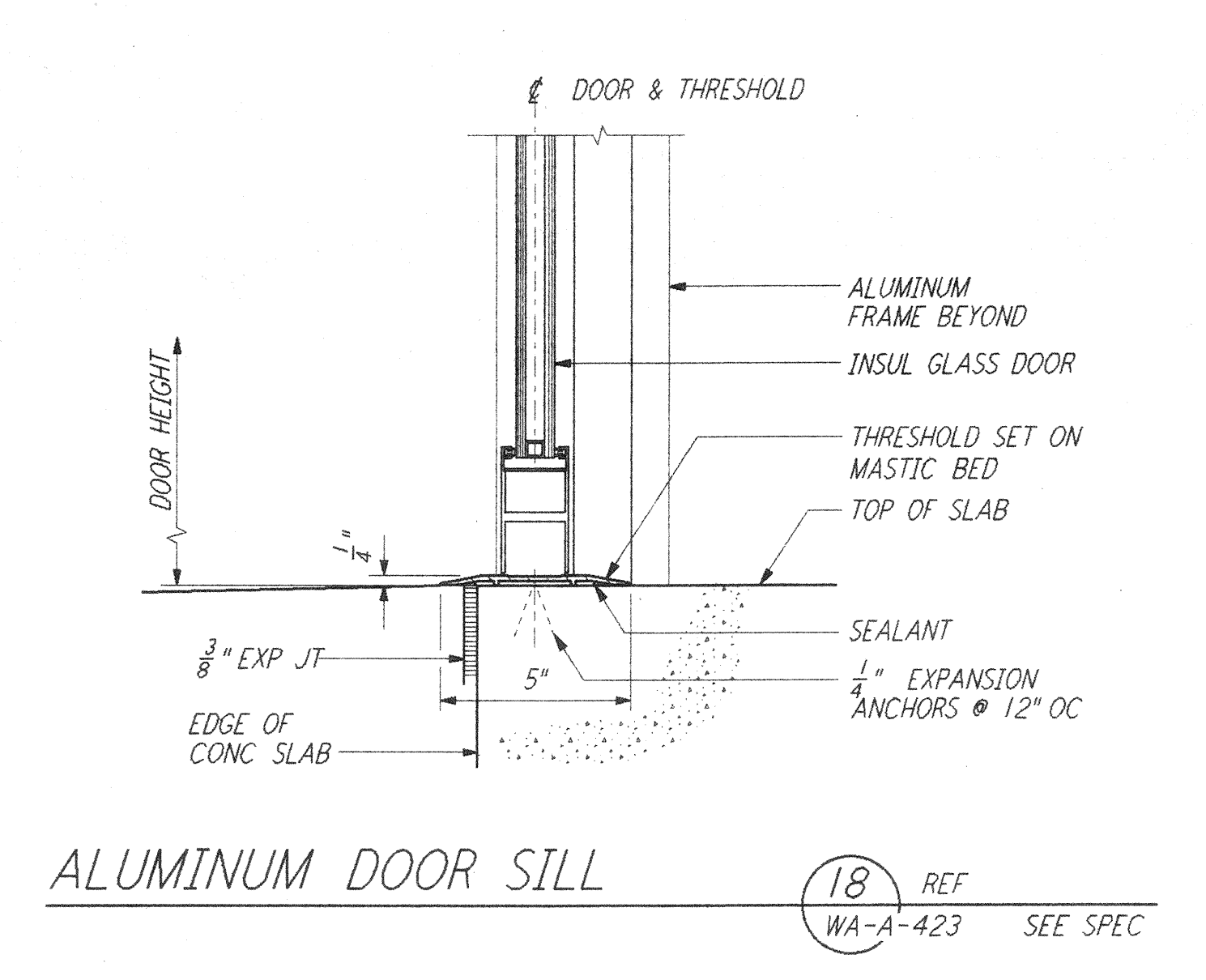
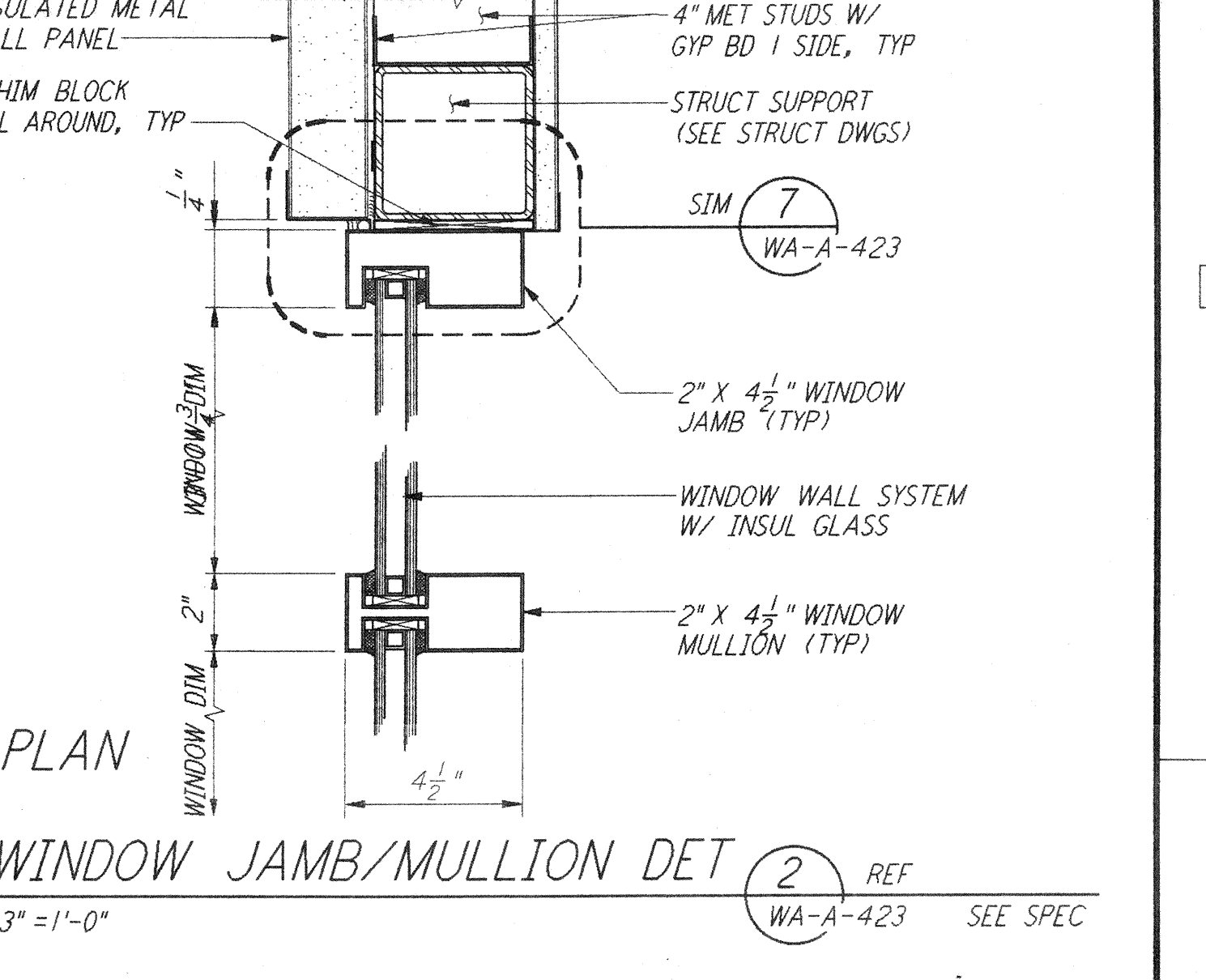
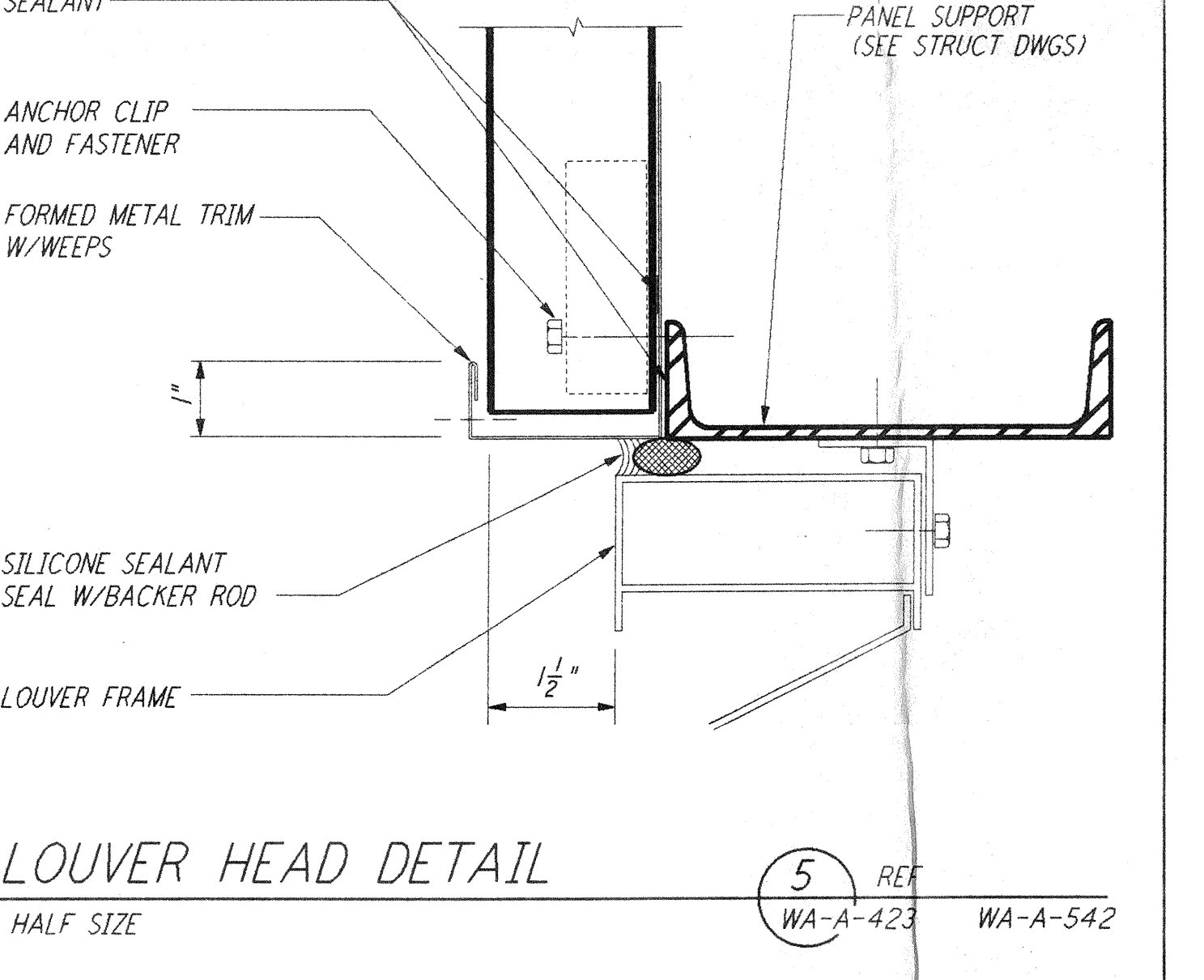
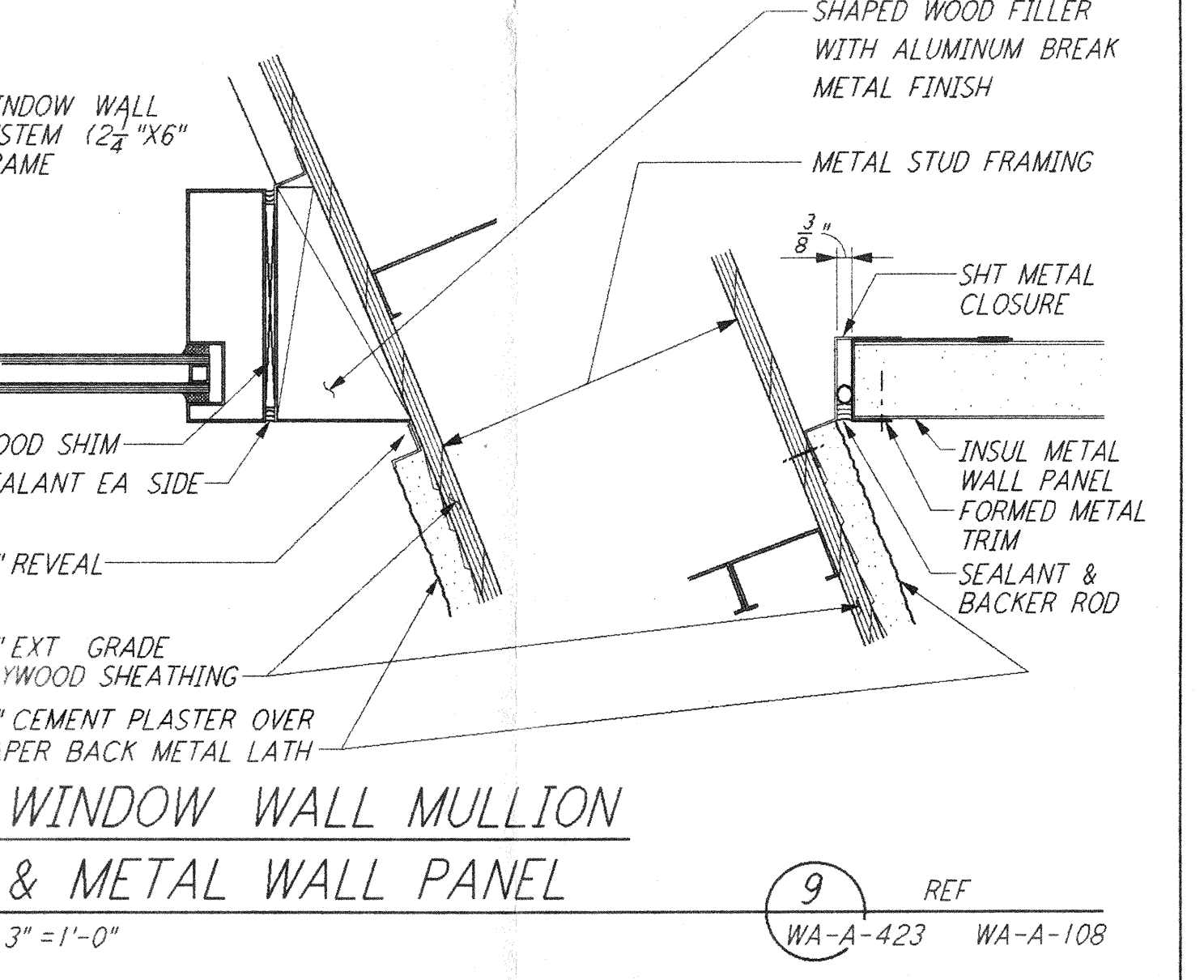
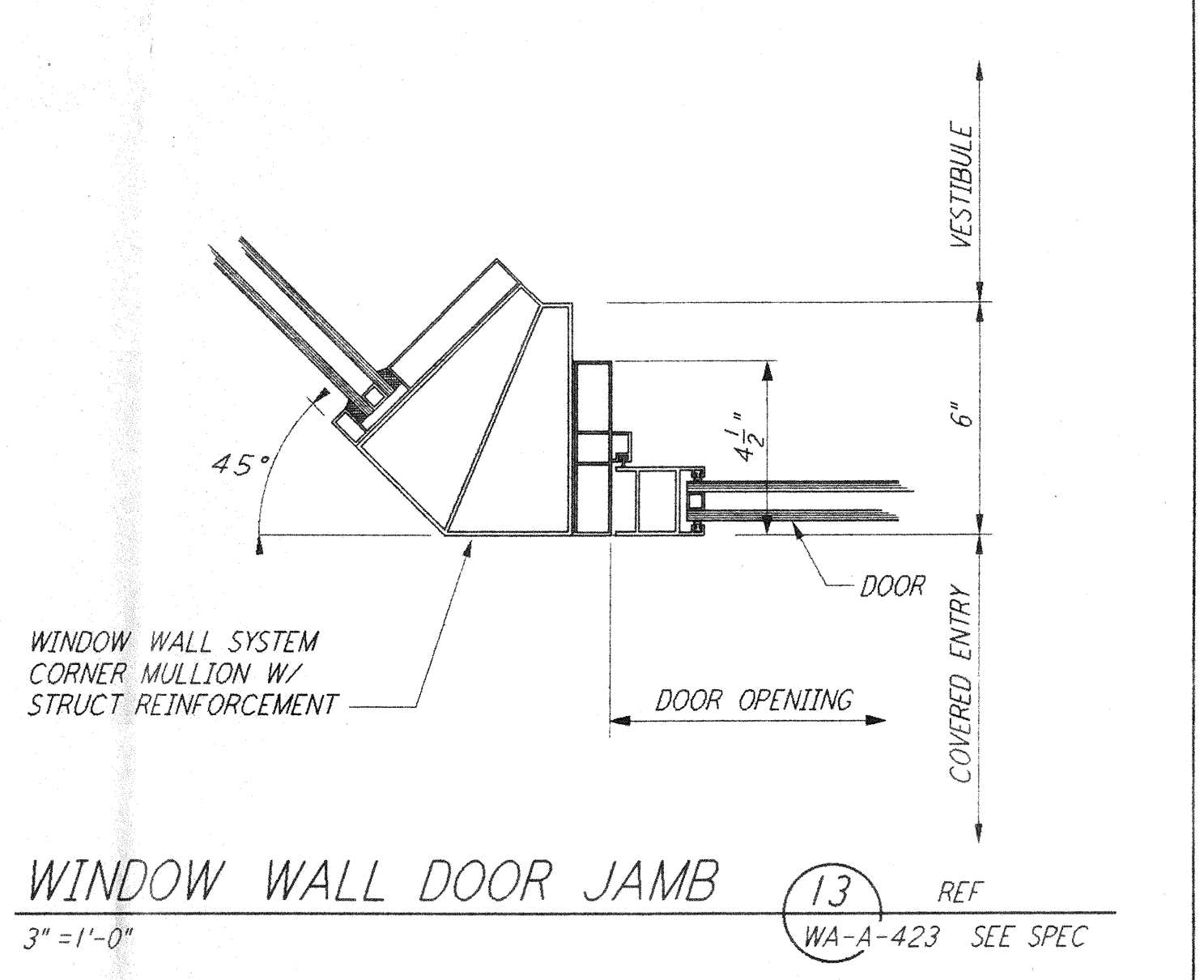
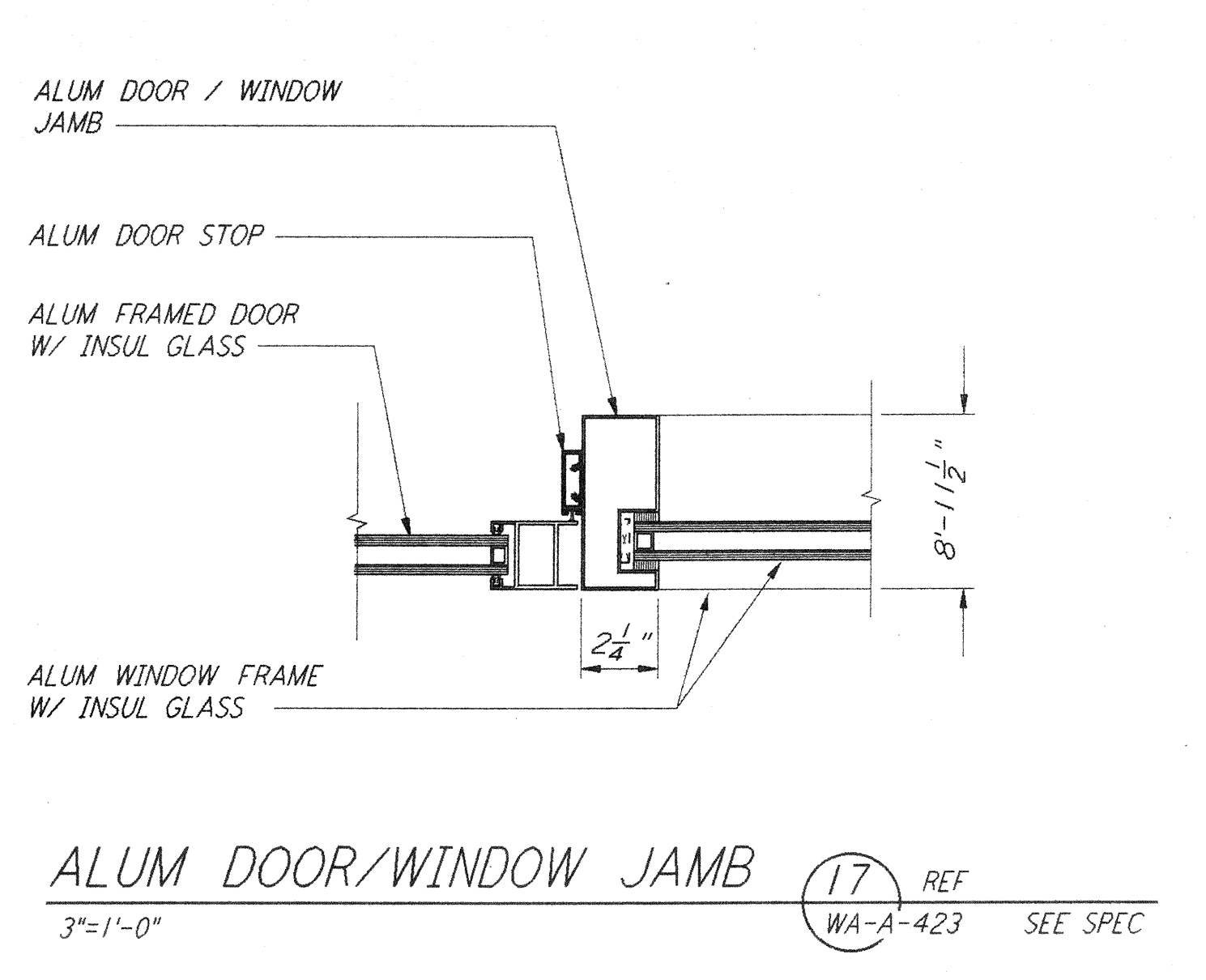
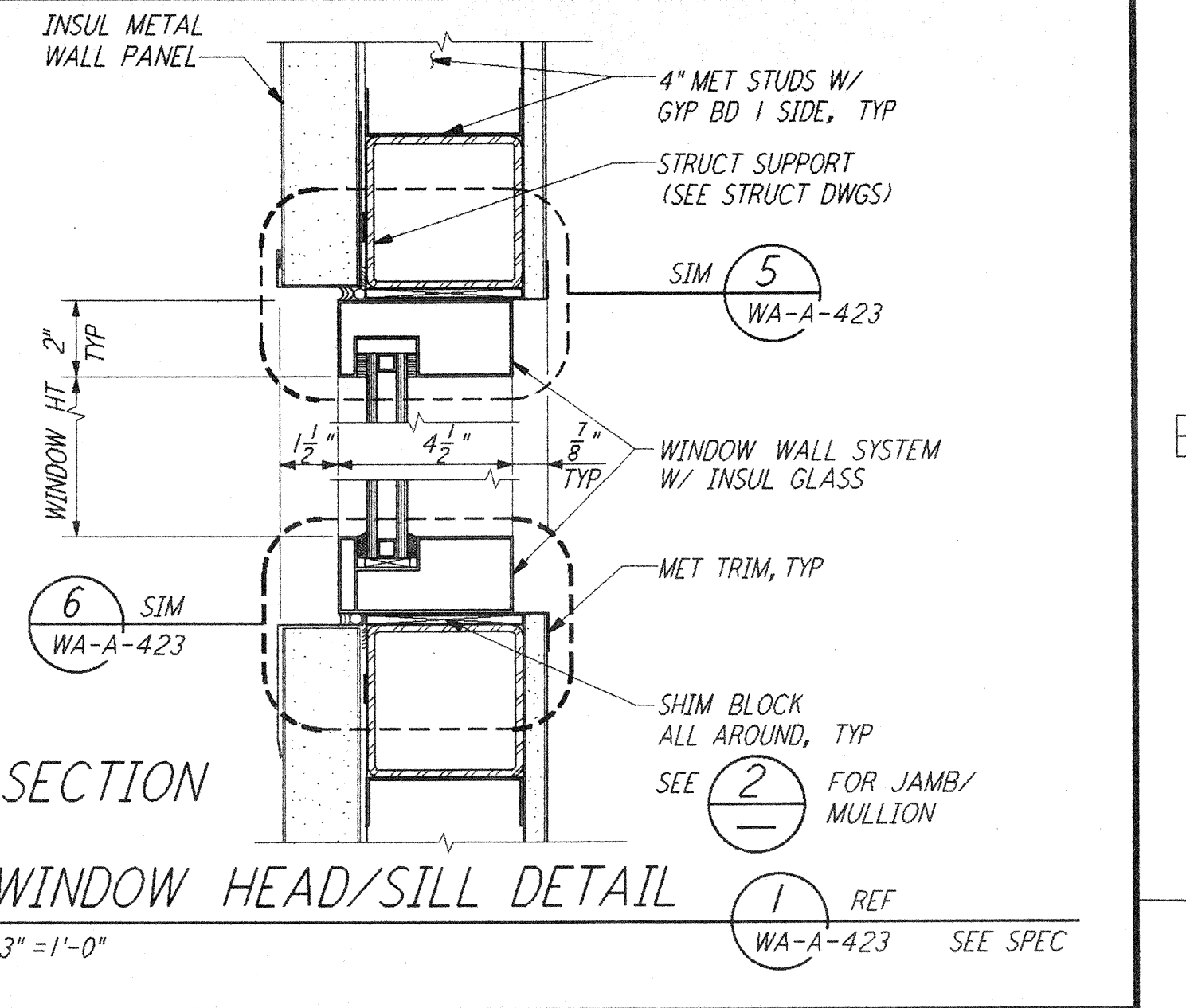
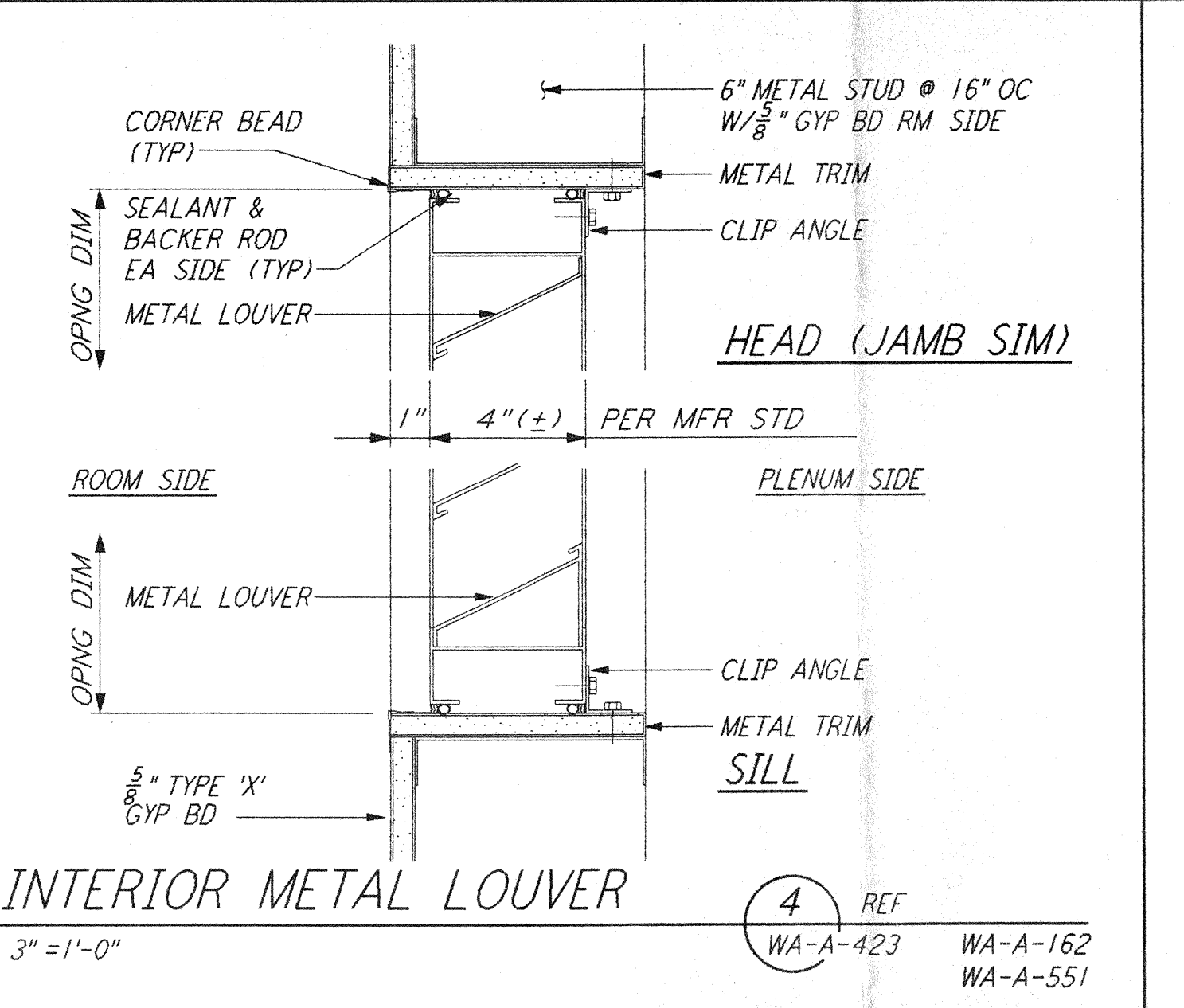
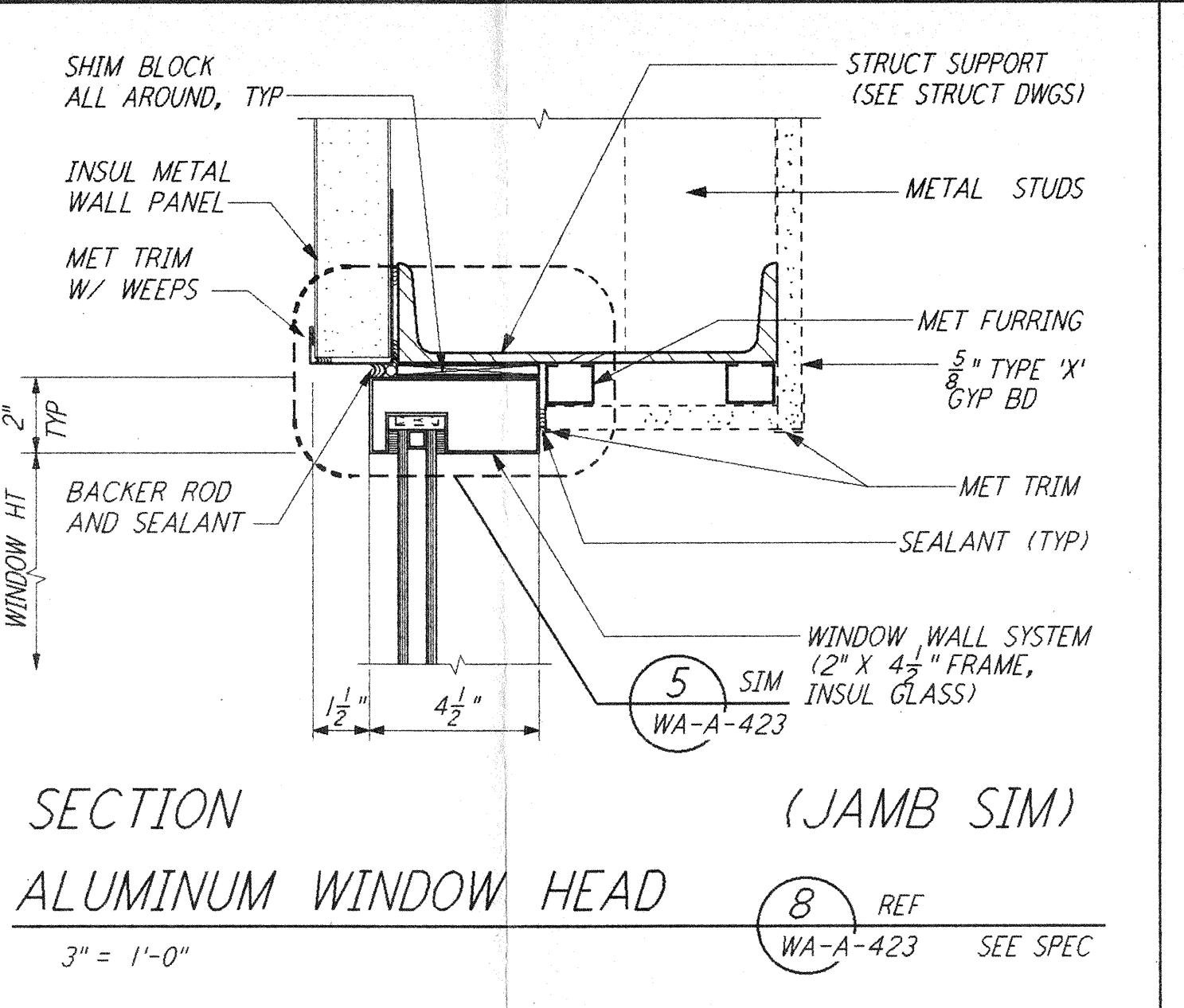
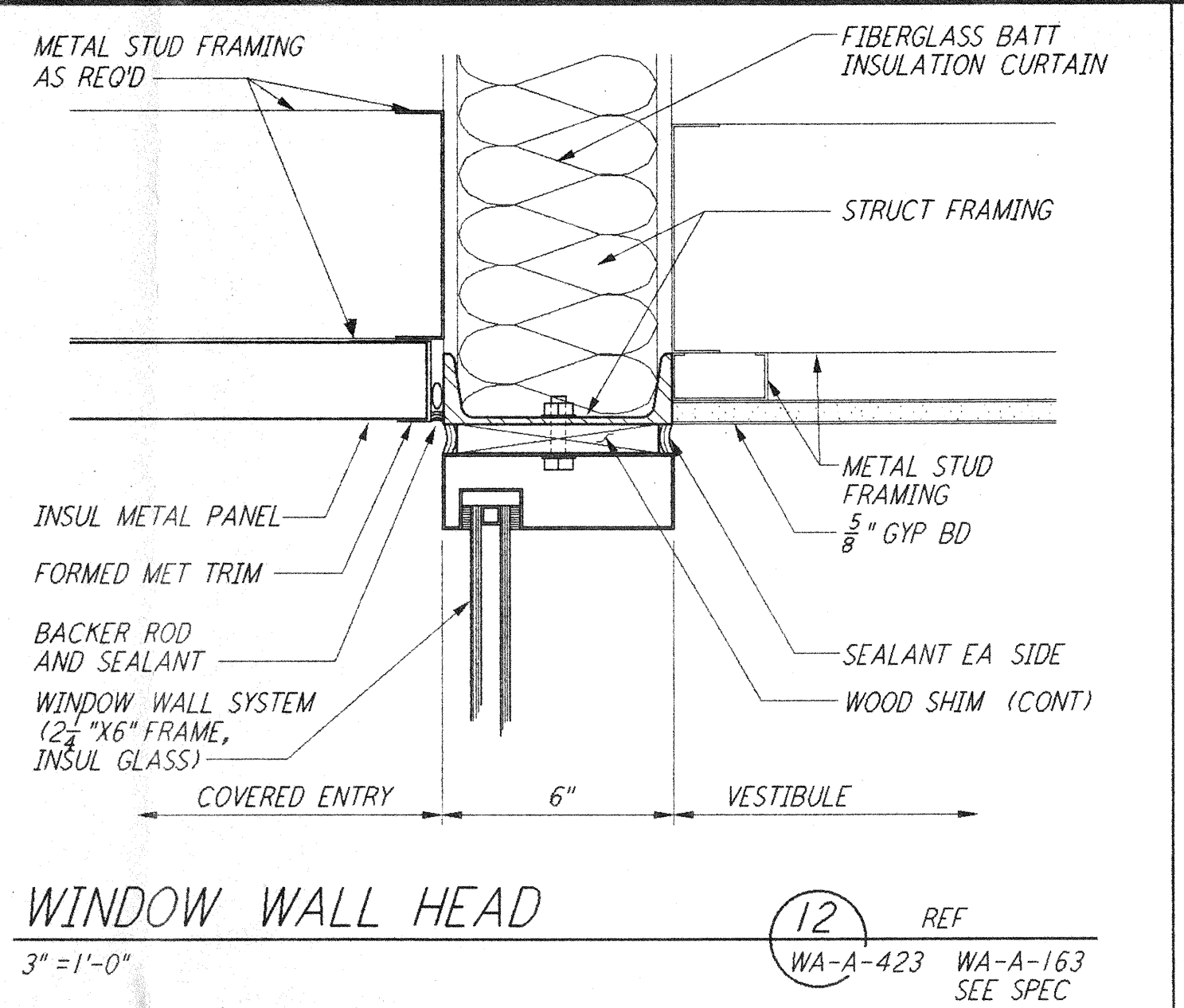
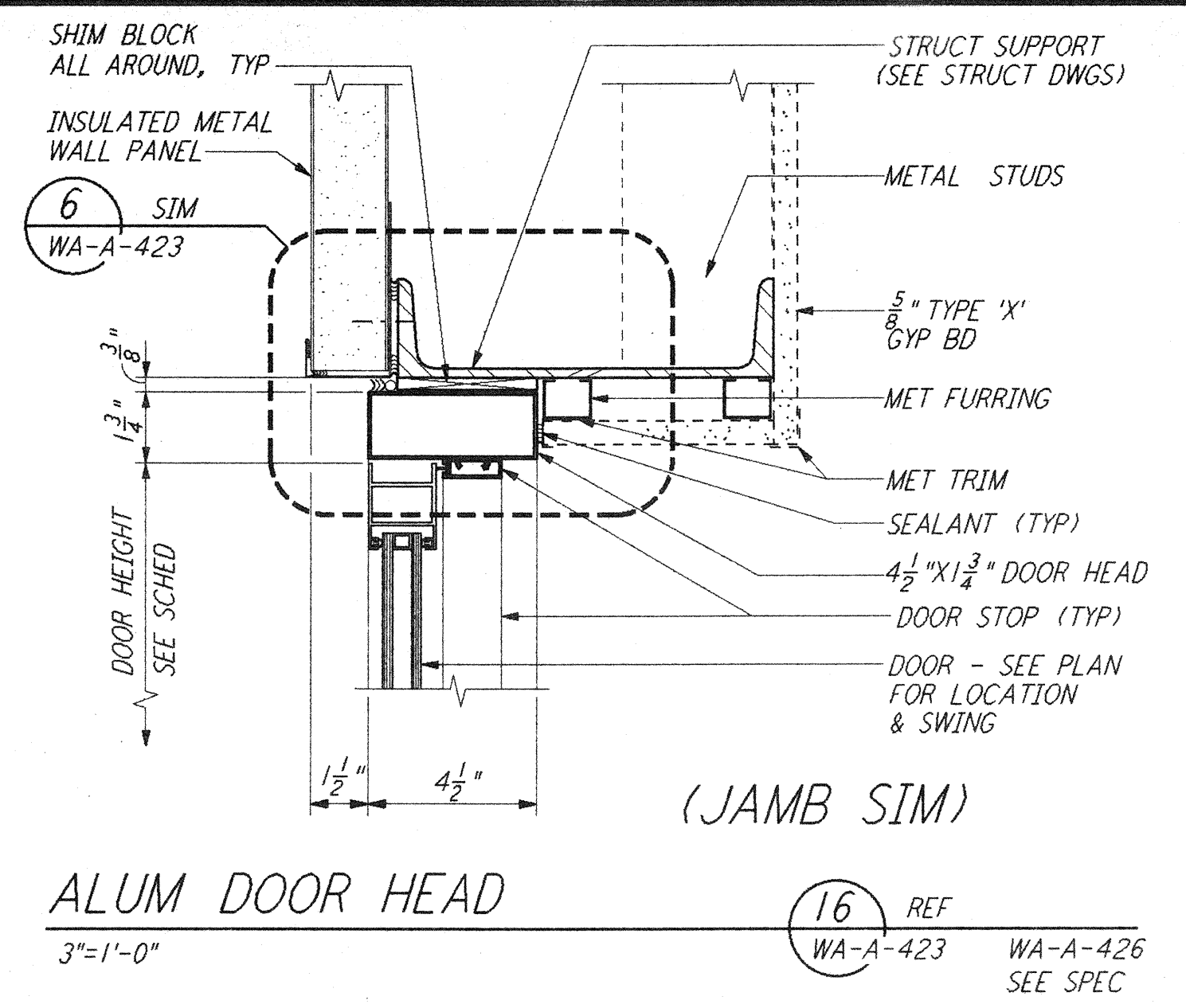


not be reproduced, copied, loaned, exhibited, or used in any other way, except by written consent from PARSONS to the borrower.



NO.	DATE	BY	CHKD	ENGR	PROJ	DESCRIPTION

ISSUED FOR CONSTRUCTION	
DRAWN	BK/RR 5-12-96
CHECKED	TB 5-26-96
ENGINEER	EKK 7-12-96
PROJ	MDC 7-12-96

See window wall 4/23/96

PARSONS
 100 WEST WALNUT STREET
 PASADENA, CALIFORNIA

LIGO
 CALIFORNIA INSTITUTE OF TECHNOLOGY
 MASSACHUSETTS INSTITUTE OF TECHNOLOGY

LASER INTERFEROMETER
 GRAVITATIONAL-WAVE OBSERVATORY
 SITE NO. 1 - HANFORD, WASHINGTON

ARCHITECTURAL WINDOW & LOUVER DETAILS
WA-A-423

AS NOTED PPI 50969 8094

LIGO-D980267-00-0
 LIGOWAF.BDR