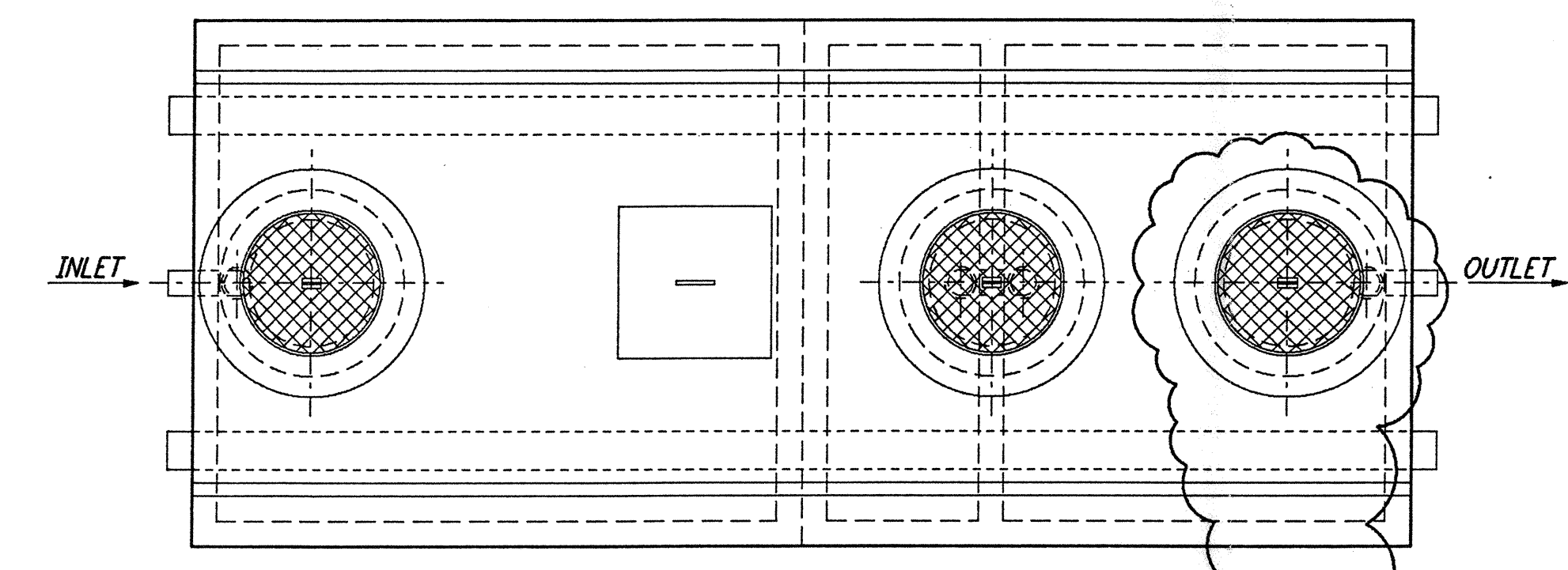
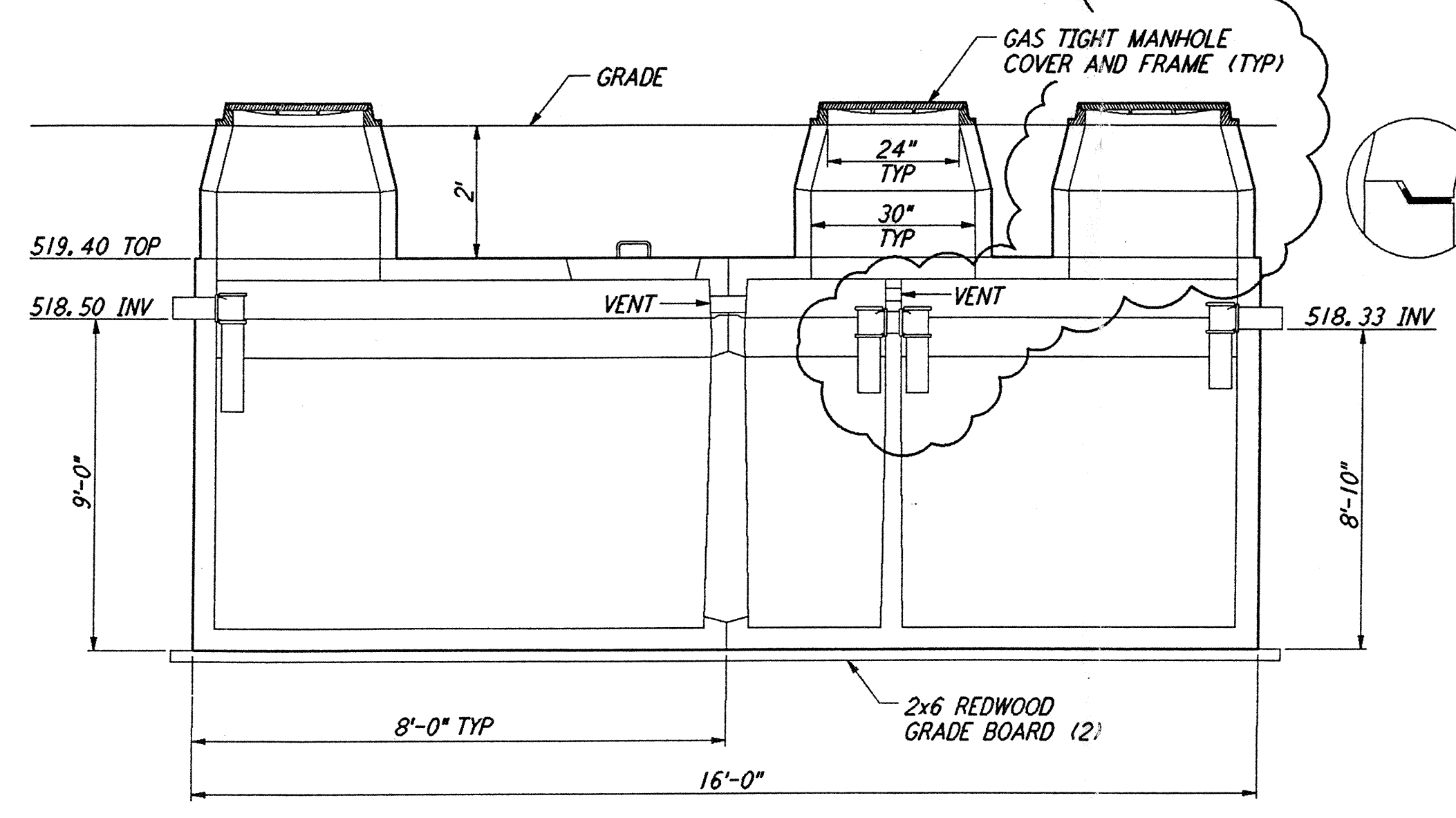


not be reproduced, copied, loaned, exhibited, or used in any other way, except by written consent from PARSONS to the borrower.

This document and the design it covers are the property of PARSONS. They are loaned only with the borrower's expressed written agreement that they will

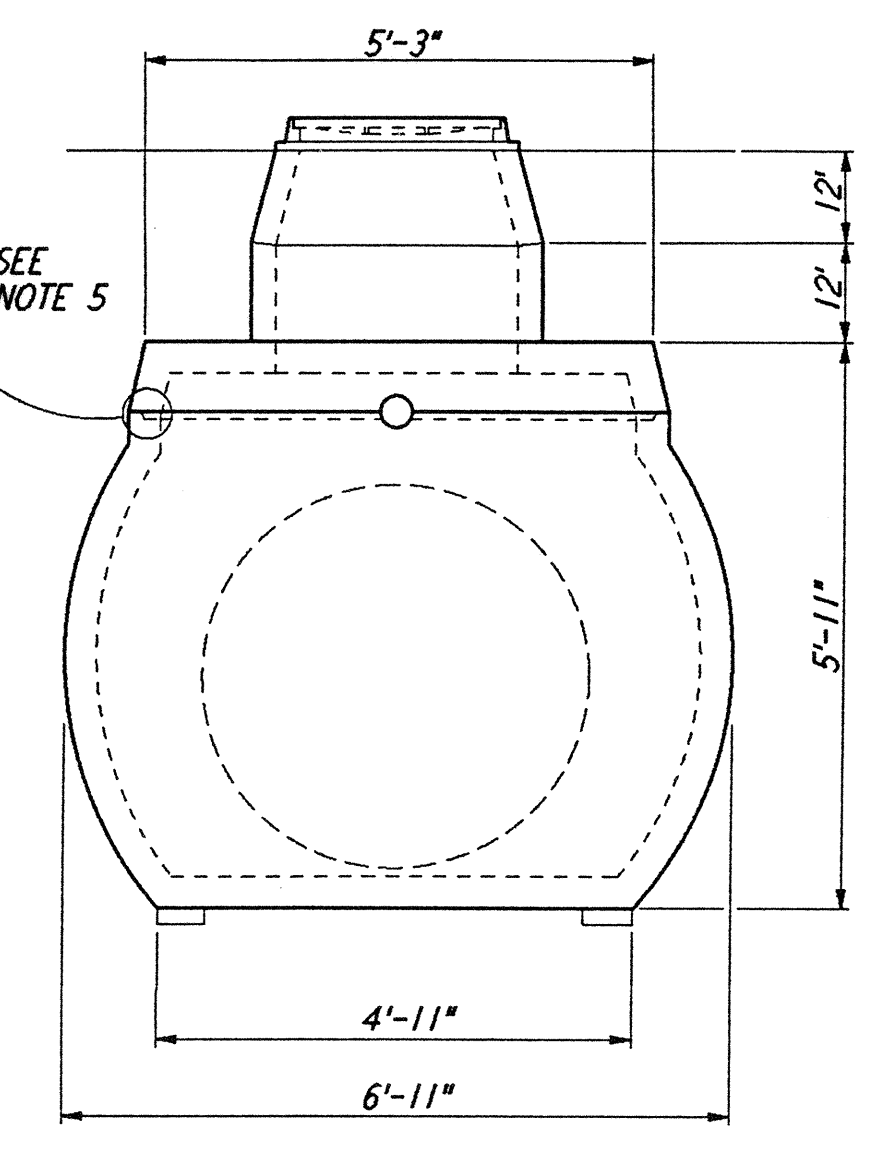


PLAN VIEW



LONGITUDINAL SECTION

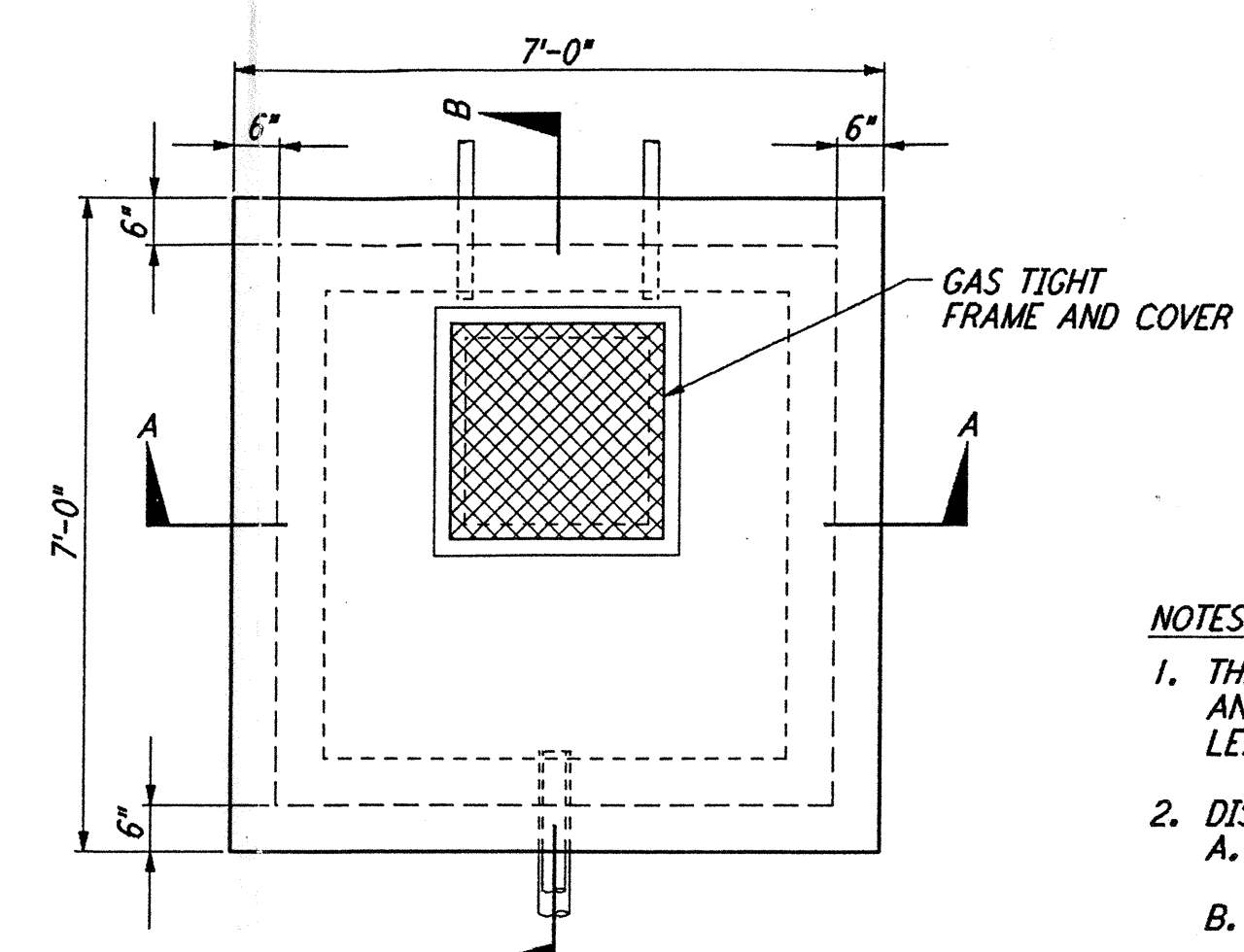
- NOTES:**
- MATERIAL SPECIFICATIONS (SEE NOTE 3)
    - CONCRETE, PORTLAND CEMENT TYPE II, MINIMUM COMPRESSIVE STRENGTH 3000 PSI AT 28 DAYS.
    - REINFORCING BARS INTERMEDIATE GRADE ASTM A615.
    - REINFORCING WELDED WIRE MESH ASTM A185.
  - PRECAST UNIT COATED INSIDE AND OUT WITH AN APPROVED PROTECTIVE COATING.
  - PRECAST UNIT TO BE PLACED ON NATURAL SOIL OR APPROVED COMPACTED FILL.
  - INTERNAL FITTINGS 4" SEWER AND DRAIN U.P.C. APPROVED.
  - STANDARD GROUND WATER SEAL - BUTYL ROPE MASTIC OR CEMENT MORTAR.



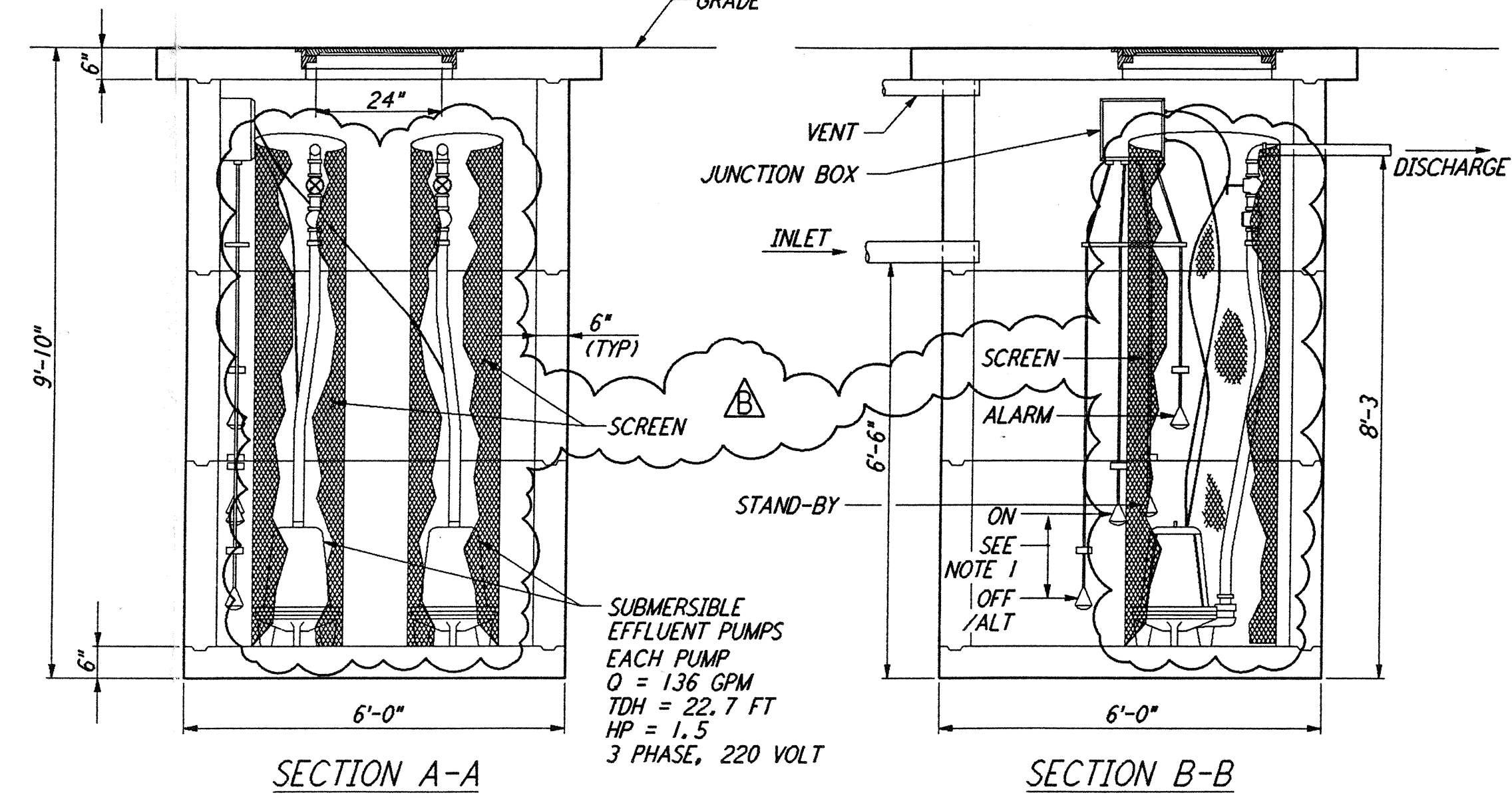
END VIEW

**SEPTIC TANK (4500 GALLONS)**  
 NOT TO SCALE (SEE NOTE 4)

REF: WA-C-056, WA-C-010, WA-C-510



PLAN VIEW



SECTION A-A

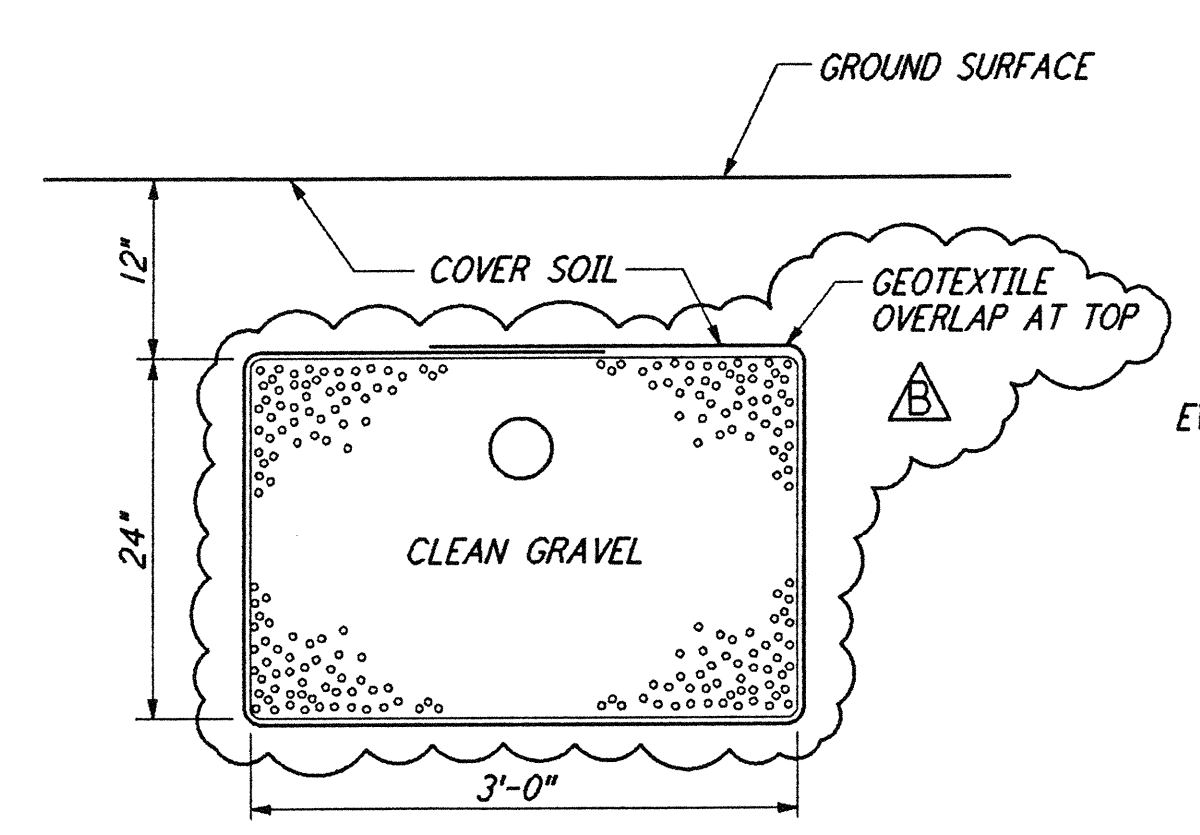
SECTION B-B

**DOSING LIFT STATION**  
 NOT TO SCALE

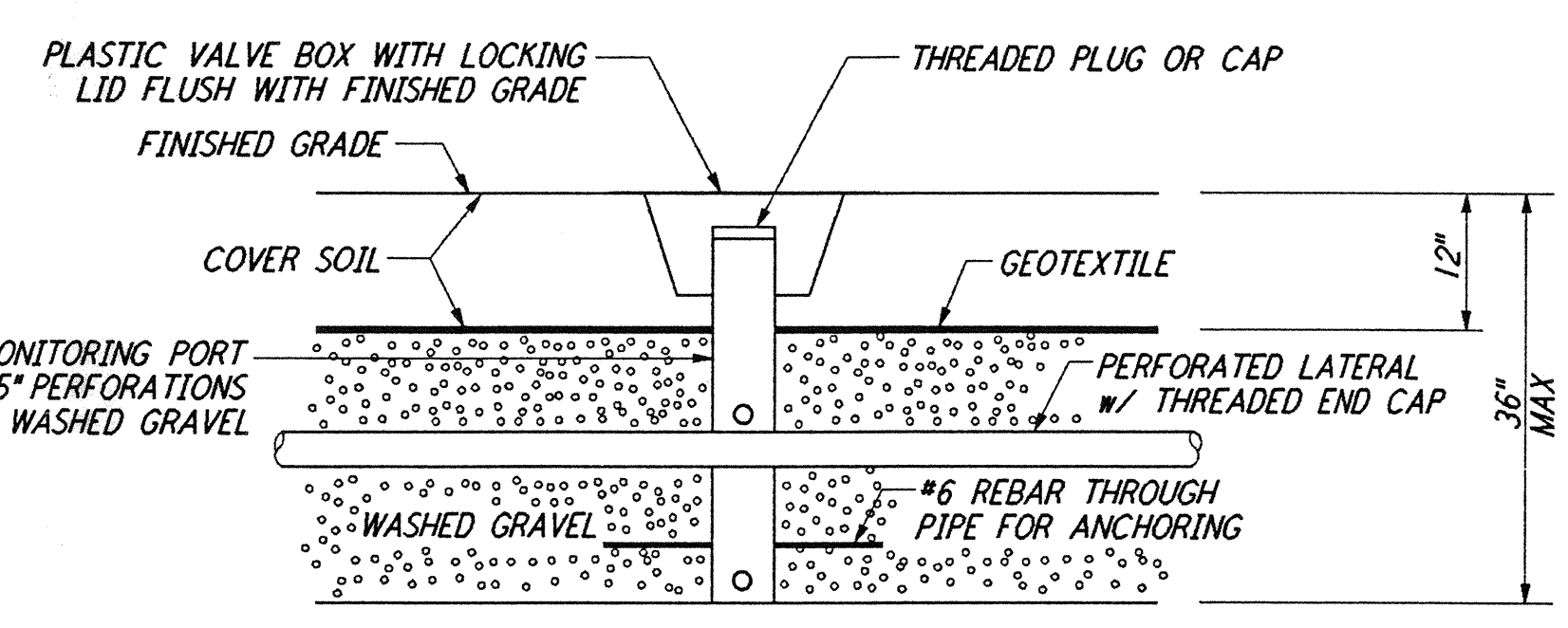
REF: WA-C-056, WA-C-010, WA-C-510

- NOTES:**
- SEE SHEET WA-C-002 FOR GENERAL NOTES, LEGEND AND ABBREVIATIONS.
  - SEPTIC TANK, LEACH FIELD AND DOSING PUMP ARE SHOWN FOR INFORMATION ONLY. CONTRACTOR IS RESPONSIBLE FOR COMPLETE DESIGN AND INSTALLATION IN ACCORDANCE WITH STATE OF WASHINGTON, DEPARTMENT OF HEALTH, REGULATIONS AND REQUIREMENTS.
  - OPTIONALLY, FIBERGLASS TANK MAY BE USED.
  - DESIGN FLOW = 3000 GALLONS PER DAY.
  - HYDRAULIC LOADING RATE = 1.2. (TO BE CONFIRMED BY DEPARTMENT OF HEALTH.)

- NOTES:**
- THE VOLUME CONTAINED BETWEEN THE OFF/ALT FLOAT AND THE ON FLOAT SHOULD BE EQUAL TO 75% OF THE LEACH LINE(S) SERVED BY EACH PUMP.
  - DISCHARGE PLUMBING MAY BE ONE OF TWO CONFIGURATIONS:
    - THE CONFIGURATION SHOWN WILL DOSE 1/2 OF THE FIELD WITH EACH DISCHARGE.
    - COMBINING THE DISCHARGE PIPES WILL DOSE THE ENTIRE FIELD WITH EACH DISCHARGE.



TYPICAL LATERAL SECTION

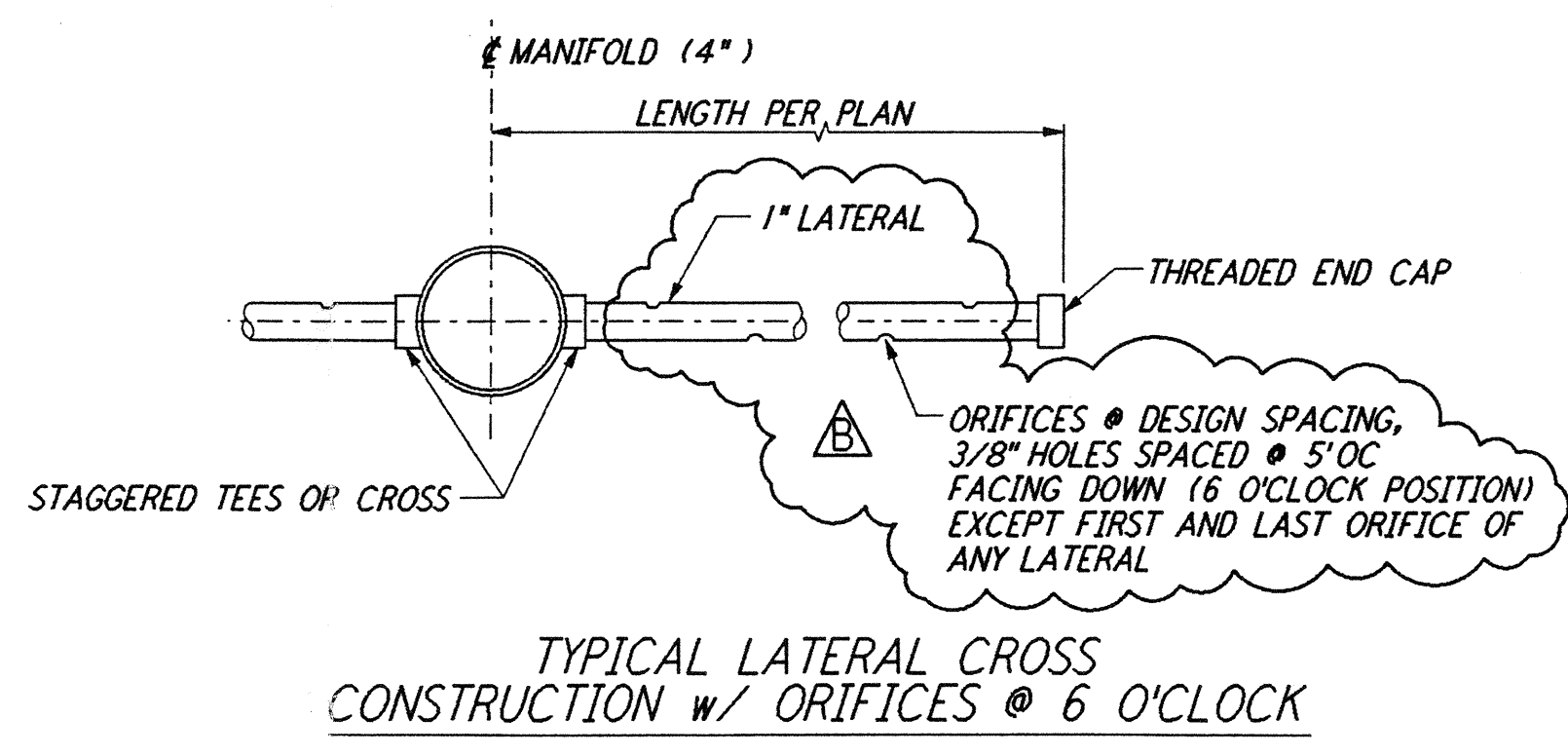


- NOTES:**
- BANDED GEOTEXTILE IS OPTIONAL ON CONVENTIONAL TRENCH SYSTEMS, BUT IS REQUIRED ON SOIL TYPE IA SAND-LINED TRENCHES OR BEDS
  - REQUIRED AT 4 CORNERS OF EACH LEACH FIELD.

**MONITORING PORT SECTION**  
 (CONVENTIONAL TRENCH DETAIL)  
 (SEE NOTE 5)

**LEACH FIELD**  
 NOT TO SCALE

REF: WA-C-056, WA-C-010, WA-C-510



TYPICAL LATERAL CROSS CONSTRUCTION w/ ORIFICES @ 6 O'CLOCK

NO.	DATE	BY	CHKD	ENGR	PROJ	DESCRIPTION
B	5/22/96	WRB	ML	JB	MDW	BID ADDENDUM #2
A	4/19/96	WRB	ML	JB	MDW	FINAL DESIGN REVIEW & BID

DRAWN	WRB
CHECKED	
ENGINEER	
PROJ	

**PARSONS**

100 WEST WALNUT STREET  
 PASADENA, CALIFORNIA

**LIGO**

CALIFORNIA INSTITUTE OF TECHNOLOGY  
 MASSACHUSETTS INSTITUTE OF TECHNOLOGY

LASER INTERFEROMETER  
 GRAVITATIONAL-WAVE OBSERVATORY  
 SITE NO. 1 - HANFORD, WASHINGTON

CIVIL  
 UTILITY DETAILS  
 SHEET 2

SCALE: AS NOTED  
 CONTRACT NUMBER: PPI50969  
 PROJECT NUMBER: 8094

WA-C-056

LIGO-D960240-B-0