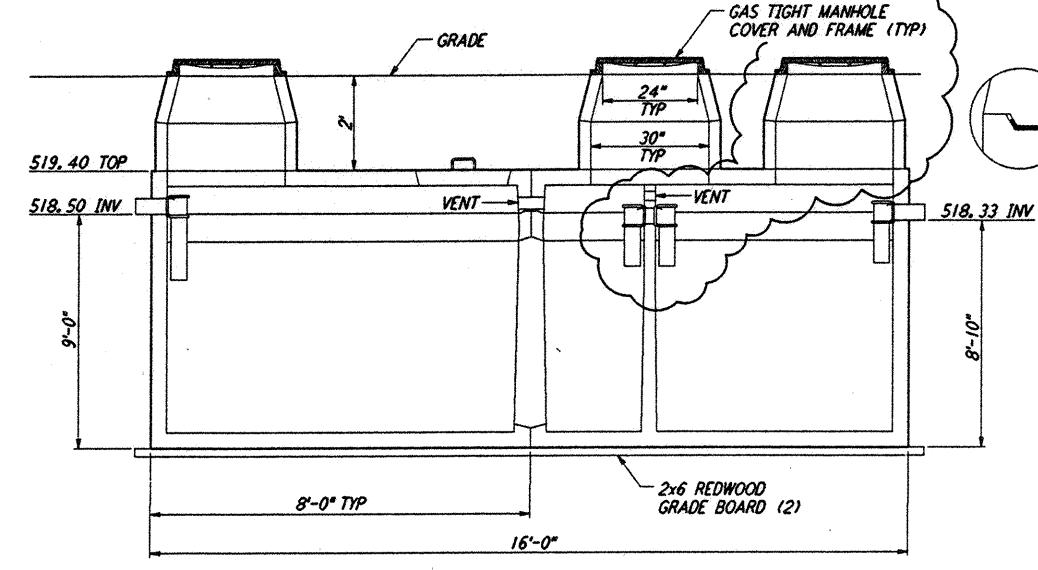
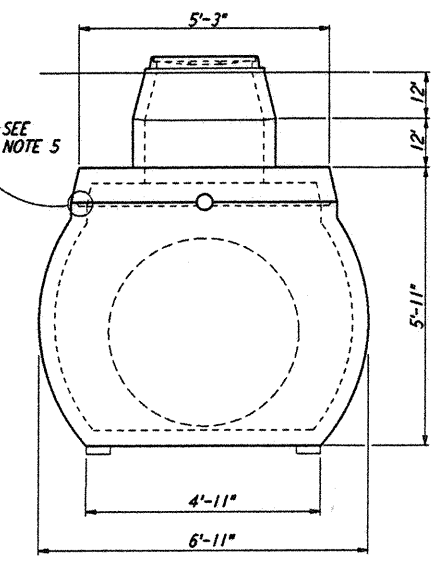


PLAN VIEW

- NOTES:**
- MATERIAL SPECIFICATIONS (SEE NOTE 3)
 - CONCRETE, PORTLAND CEMENT TYPE II, MINIMUM COMPRESSIVE STRENGTH 3000 PSI AT 28 DAYS.
 - REINFORCING BARS INTERMEDIATE GRADE ASTM A615.
 - REINFORCING WELDED WIRE MESH ASTM A185.
 - PRECAST UNIT COATED INSIDE AND OUT WITH AN APPROVED PROTECTIVE COATING.
 - PRECAST UNIT TO BE PLACED ON NATURAL SOIL OR APPROVED COMPACTED FILL.
 - INTERNAL FITTINGS 4" SEWER AND DRAIN U.P.C. APPROVED.
 - STANDARD GROUND WATER SEAL - BUTYL ROPE MASTIC OR CEMENT MORTAR.



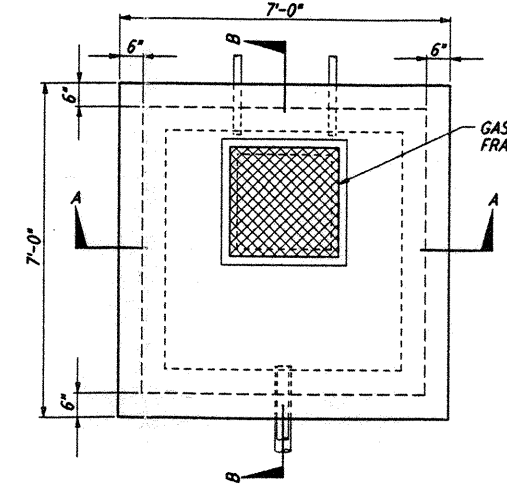
LONGITUDINAL SECTION



END VIEW

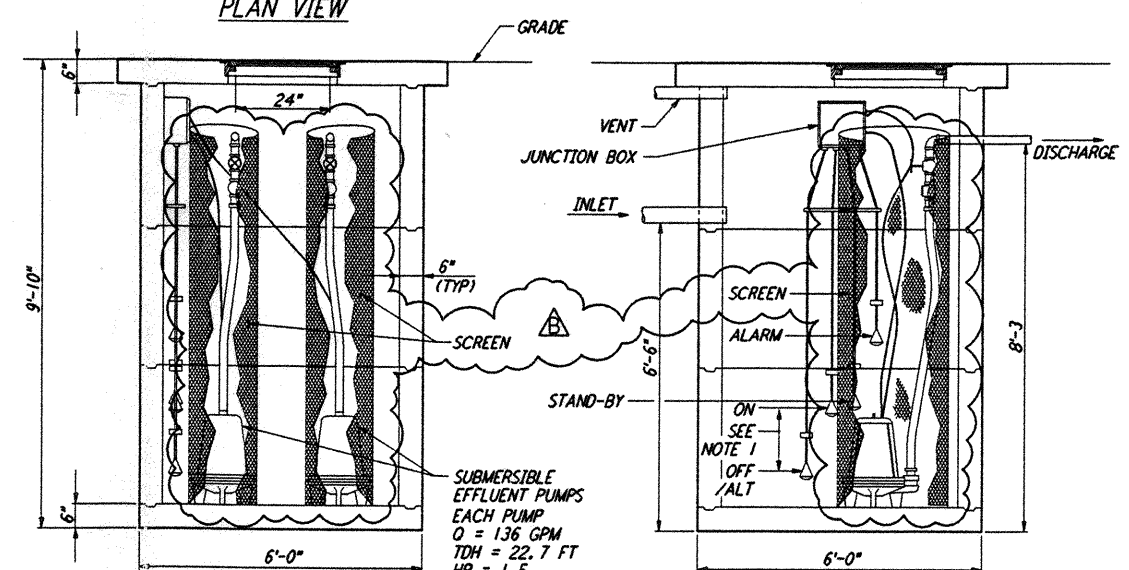
SEPTIC TANK (4500 GALLONS)
 NOT TO SCALE (SEE NOTE 4)

1	REF
WA-C-056	WA-C-040
	WA-C-510



PLAN VIEW

- NOTES:**
- THE VOLUME CONTAINED BETWEEN THE OFF/ALT FLOAT AND THE ON FLOAT SHOULD BE EQUAL TO 75% OF THE LEACH LINE(S) SERVED BY EACH PUMP.
 - DISCHARGE PLUMBING MAY BE ONE OF TWO CONFIGURATIONS:
 - THE CONFIGURATION SHOWN WILL DOSE 1/2 OF THE FIELD WITH EACH DISCHARGE.
 - COMBINING THE DISCHARGE PIPES WILL DOSE THE ENTIRE FIELD WITH EACH DISCHARGE.



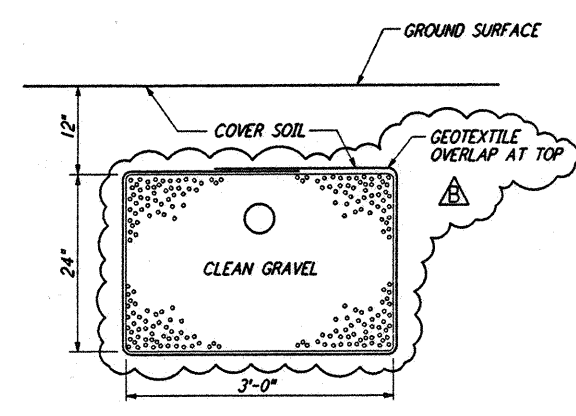
SECTION A-A

SECTION B-B

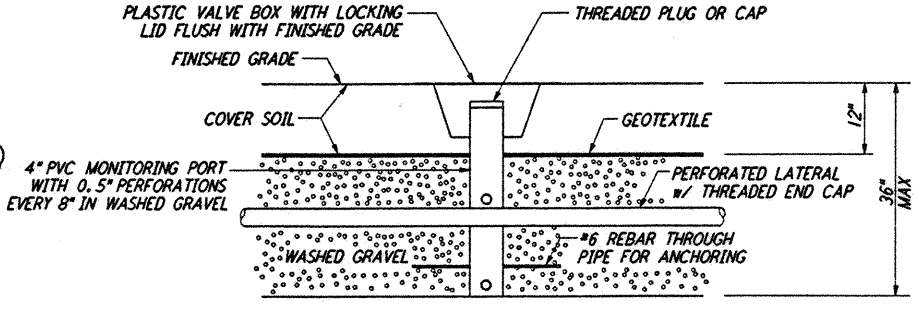
DOSING LIFT STATION
 NOT TO SCALE

2	REF
WA-C-056	WA-C-040
	WA-C-510

- NOTES:**
- SEE SHEET WA-C-002 FOR GENERAL NOTES, LEGEND AND ABBREVIATIONS.
 - SEPTIC TANK, LEACH FIELD AND DOSING PUMP ARE SHOWN FOR INFORMATION ONLY. CONTRACTOR IS RESPONSIBLE FOR COMPLETE DESIGN AND INSTALLATION IN ACCORDANCE WITH STATE OF WASHINGTON, DEPARTMENT OF HEALTH, REGULATIONS AND REQUIREMENTS.
 - OPTIONALLY, FIBERGLASS TANK MAY BE USED.
 - DESIGN FLOW = 3000 GALLONS PER DAY.
 - HYDRAULIC LOADING RATE = 1.2 (TO BE CONFIRMED BY DEPARTMENT OF HEALTH.)



TYPICAL LATERAL SECTION



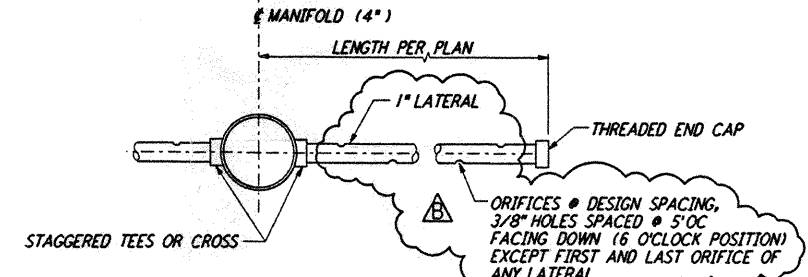
MONITORING PORT SECTION
 (CONVENTIONAL TRENCH DETAIL)

- NOTES:**
- BANDED GEOTEXTILE IS OPTIONAL ON CONVENTIONAL TRENCH SYSTEMS, BUT IS REQUIRED ON SOIL TYPE IA SAND-LINED TRENCHES OR BEDS.
 - REQUIRED AT 4 CORNERS OF EACH LEACH FIELD.

(SEE NOTE 5)

LEACH FIELD
 NOT TO SCALE

3	REF
WA-C-056	WA-C-040
	WA-C-510



TYPICAL LATERAL CROSS
 CONSTRUCTION w/ ORIFICES @ 6 O'CLOCK

- ORIFICES @ DESIGN SPACING:**
 3/8" HOLES SPACED @ 5' OC
 FACING DOWN (6 O'CLOCK POSITION)
 EXCEPT FIRST AND LAST ORIFICE OF ANY LATERAL

not be reproduced, copied, loaned, exhibited, or used in any other way, except by written consent from PARSONS to the borrower.

This document and the design it covers are the property of PARSONS. They are loaned only with the borrower's expressed written agreement that they will

NO.	DATE	BY	CHKD	ENGR	PROJ	DESCRIPTION
B	5/22/96	WRB				BID ADDENDUM #2
A	4/19/96	WRB	ML	JB	MDW	FINAL DESIGN REVIEW & BID

DRAWN	WRB
CHECKED	
ENGINEER	
PROJ	

PARSONS
 100 WEST WALNUT STREET
 PASADENA, CALIFORNIA

LIGO
 CALIFORNIA INSTITUTE OF TECHNOLOGY
 MASSACHUSETTS INSTITUTE OF TECHNOLOGY

LASER INTERFEROMETER
 GRAVITATIONAL-WAVE OBSERVATORY
 SITE NO. 1 - HANFORD, WASHINGTON

CIVIL
 UTILITY DETAILS
 SHEET 2

AS NOTED PPI50969 8094
WA-C-056

Sun May 14 1996 14:02:37 33-382 -3PPTUSN00RESV208ZLE065P4P LIGOWF3.BDR