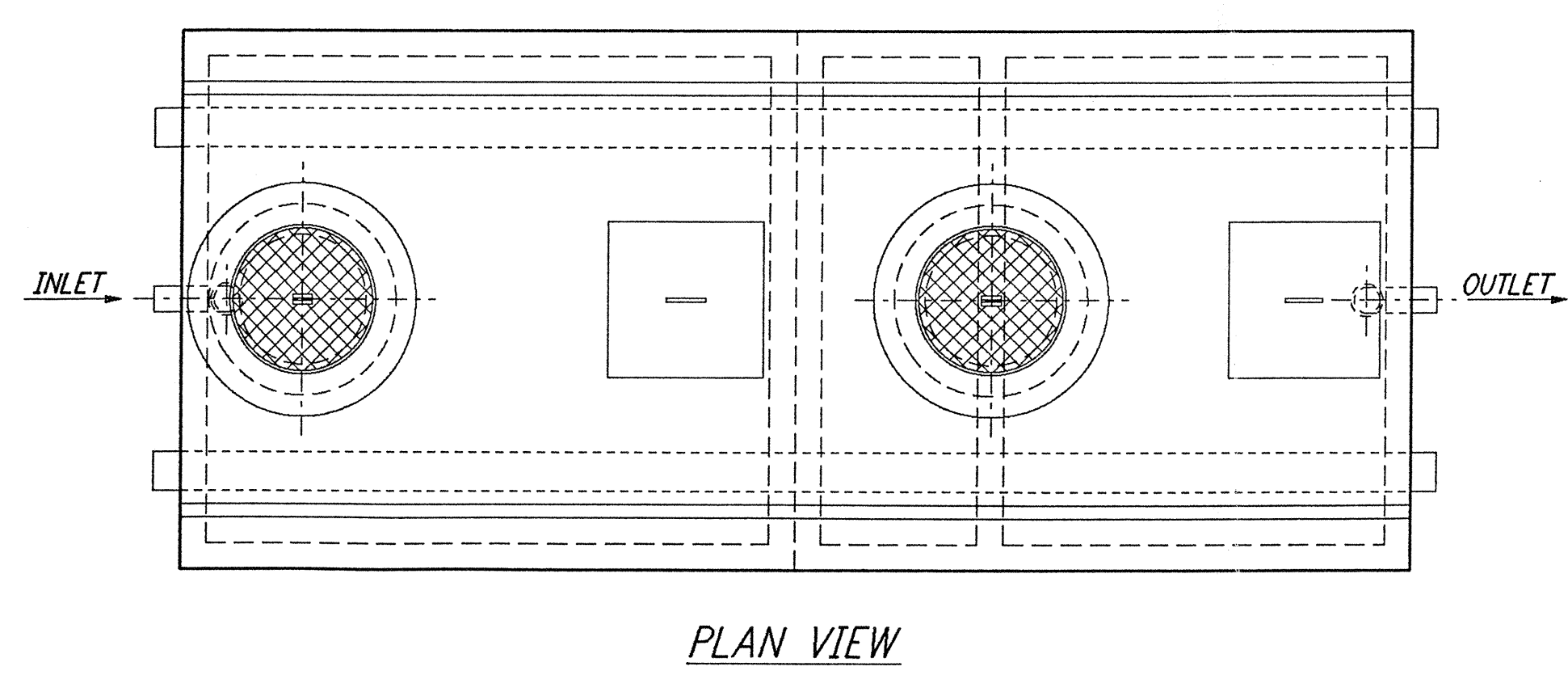
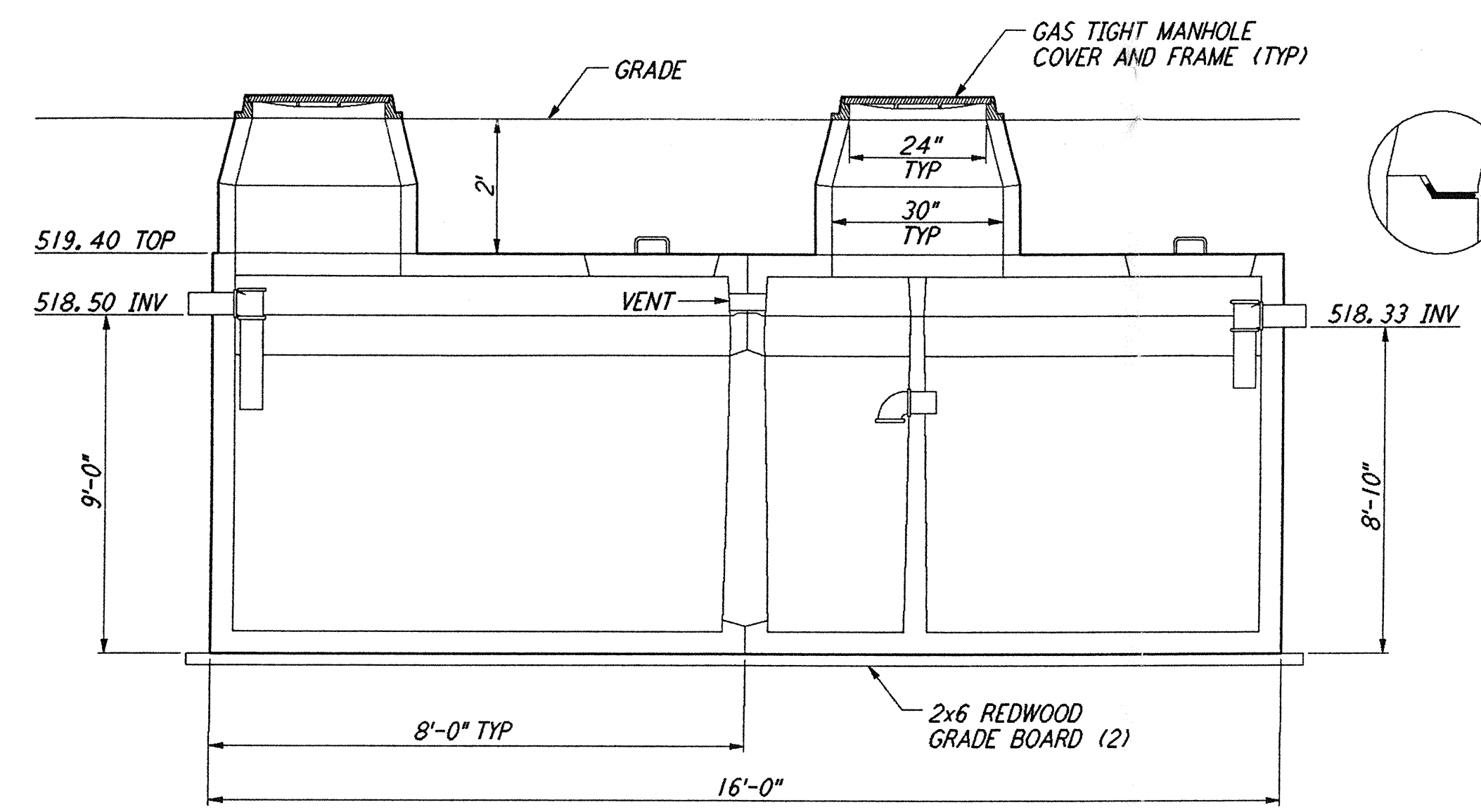


**NOTES:**  
 1. SEE SHEET WA-C-002 FOR GENERAL NOTES, LEGEND AND ABBREVIATIONS.

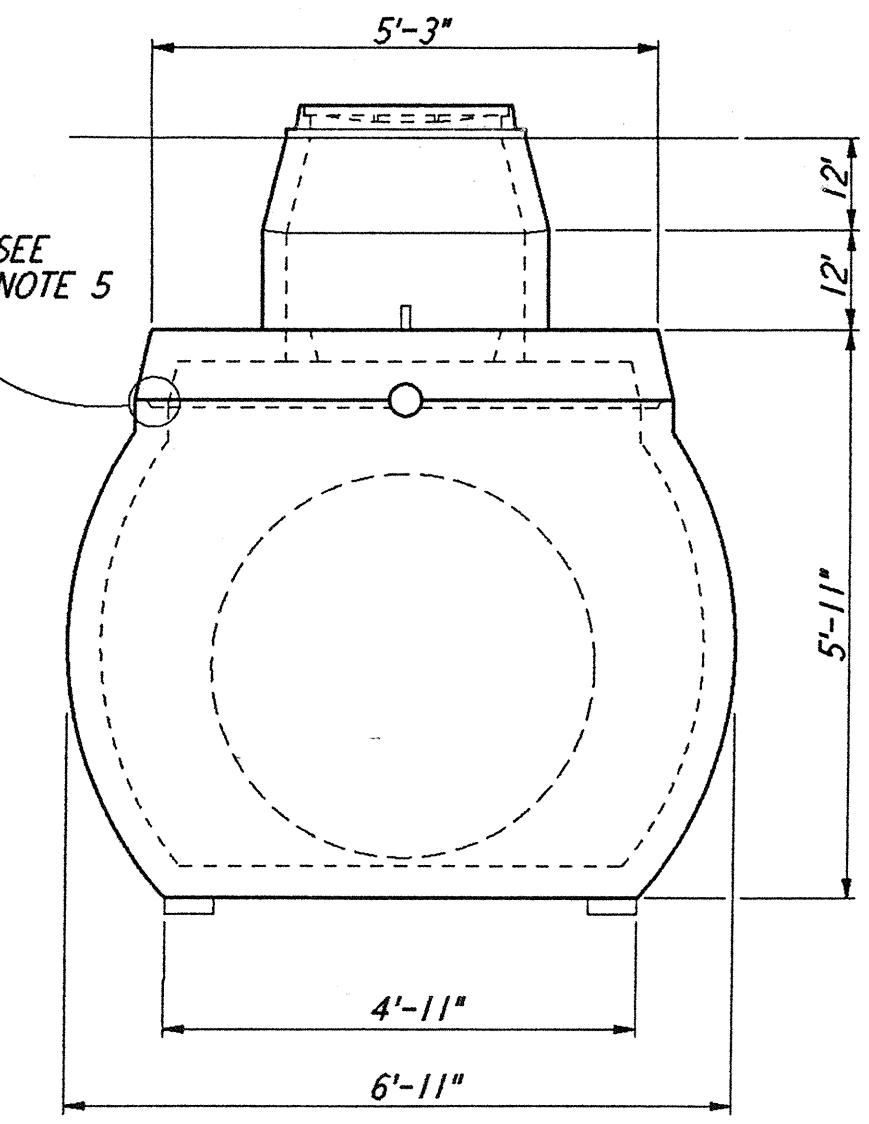


PLAN VIEW

- NOTES:**
- MATERIAL SPECIFICATIONS:
    - CONCRETE, PORTLAND CEMENT TYPE II, MINIMUM COMPRESSIVE STRENGTH 3000 PSI AT 28 DAYS.
    - REINFORCING BARS INTERMEDIATE GRADE ASTM A615.
    - REINFORCING WELDED WIRE MESH ASTM A185.
  - PRECAST UNIT COATED INSIDE AND OUT WITH AN APPROVED PROTECTIVE COATING.
  - PRECAST UNIT TO BE PLACED ON NATURAL SOIL OR APPROVED COMPACTED FILL.
  - INTERNAL FITTINGS 4" SEWER AND DRAIN U.P.C., APPROVED.
  - STANDARD GROUND WATER SEAL - BUTYL ROPE MASTIC OR CEMENT MORTAR.

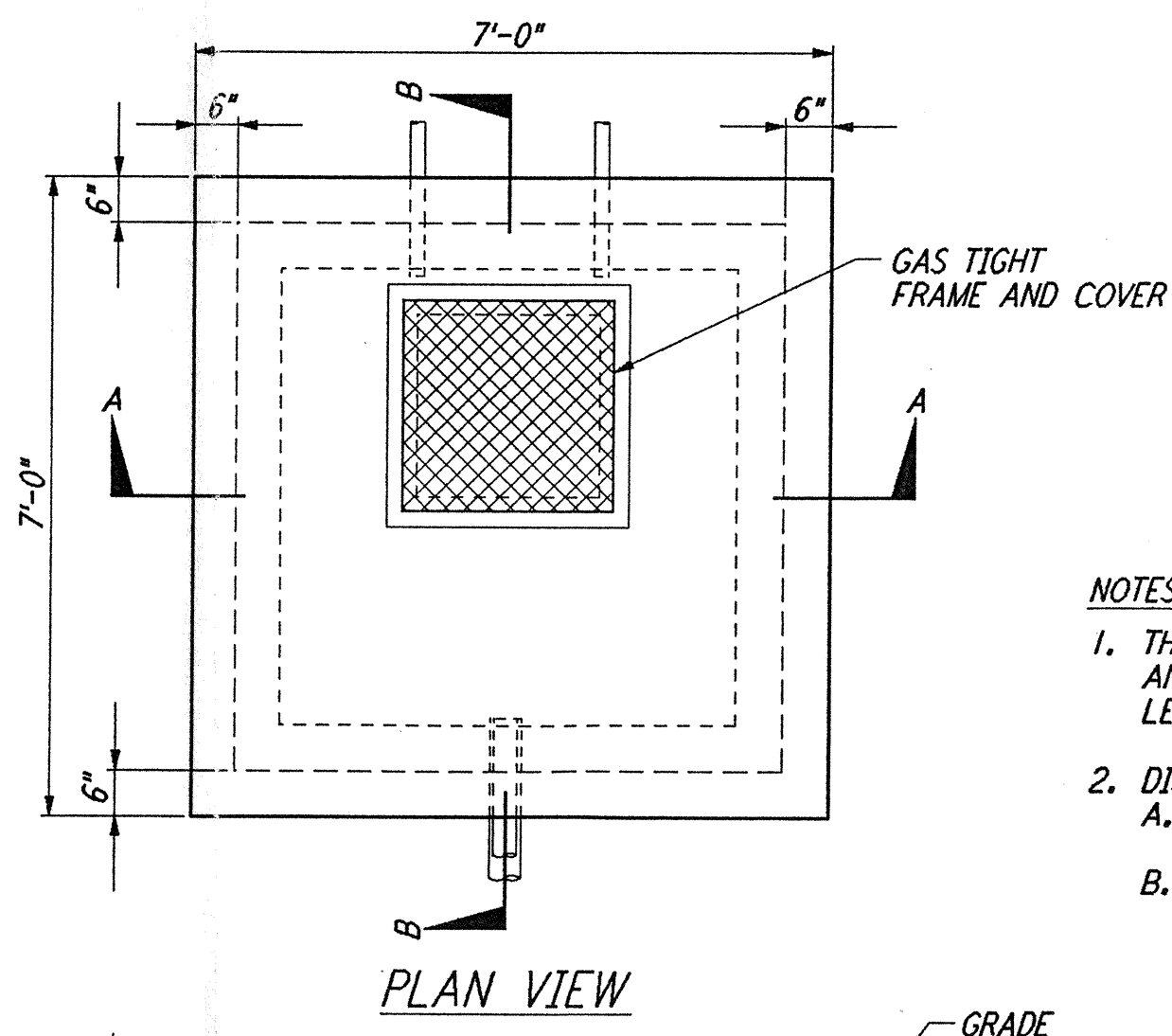


LONGITUDINAL SECTION



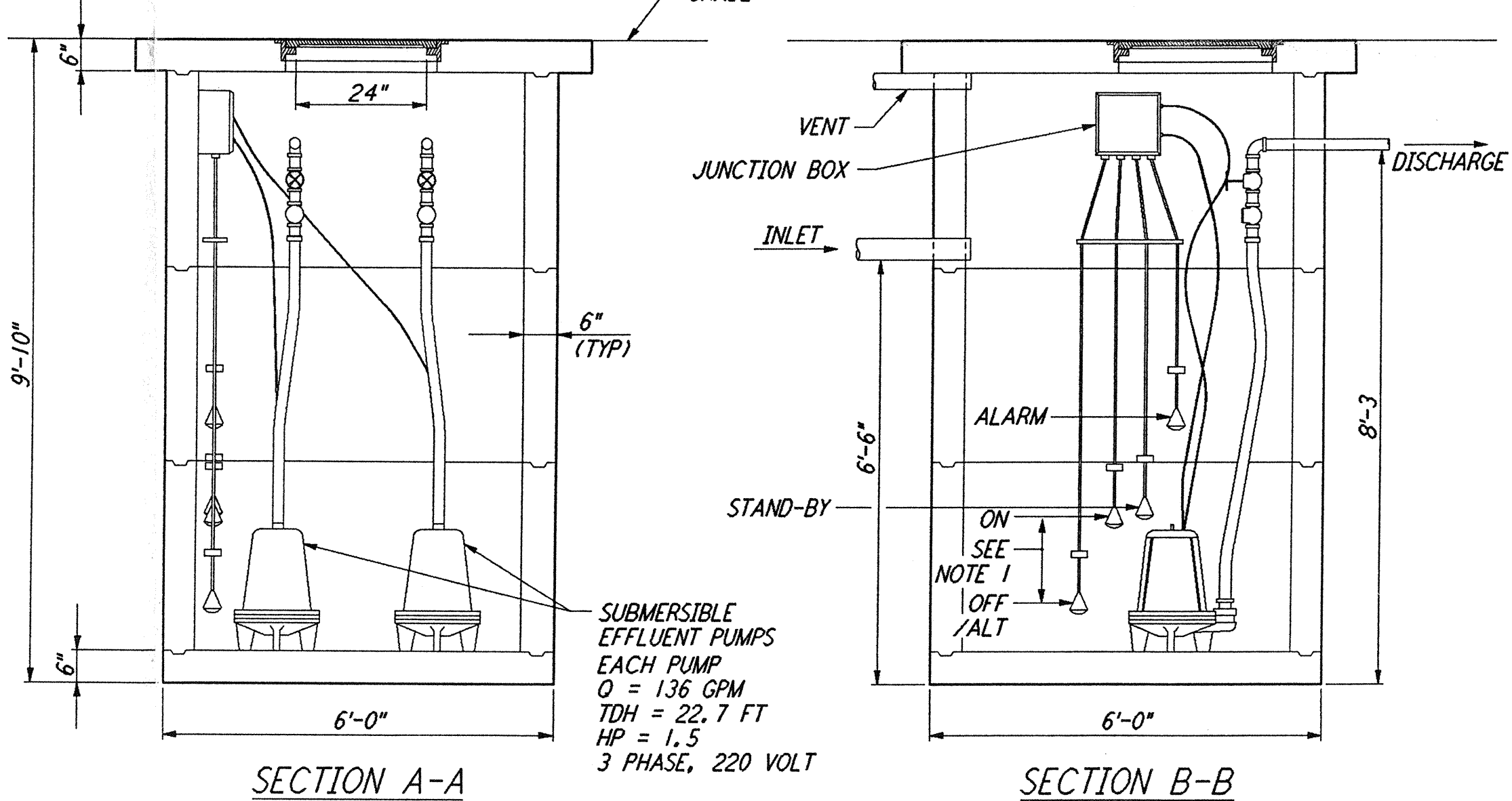
END VIEW

SEPTIC TANK (4500 GALLONS) 1  
 NOT TO SCALE  
 REF: WA-C-056, WA-C-010, WA-C-510



PLAN VIEW

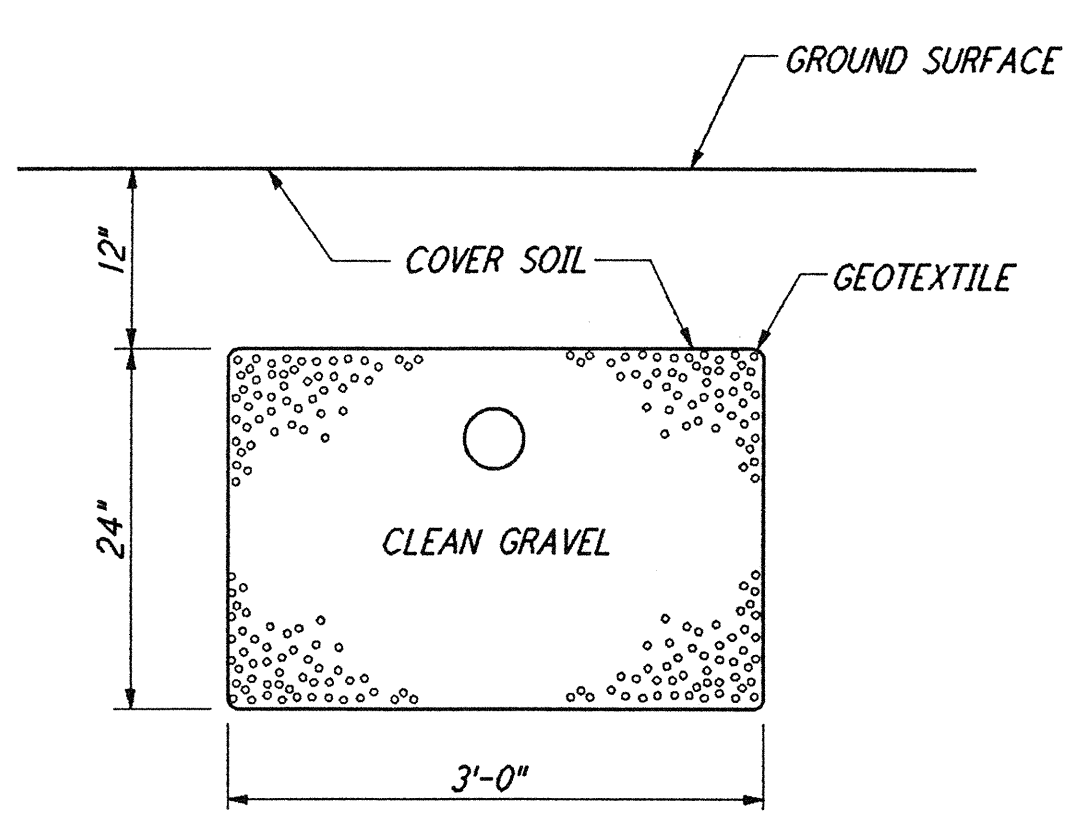
- NOTES:**
- THE VOLUME CONTAINED BETWEEN THE OFF/ALT FLOAT AND THE ON FLOAT SHOULD BE EQUAL TO 75% OF THE LEACH LINE(S) SERVED BY EACH PUMP.
  - DISCHARGE PLUMBING MAY BE ONE OF TWO CONFIGURATIONS:
    - THE CONFIGURATION SHOWN WILL DOSE 1/2 OF THE FIELD WITH EACH DISCHARGE.
    - COMBINING THE DISCHARGE PIPES WILL DOSE THE ENTIRE FIELD WITH EACH DISCHARGE.



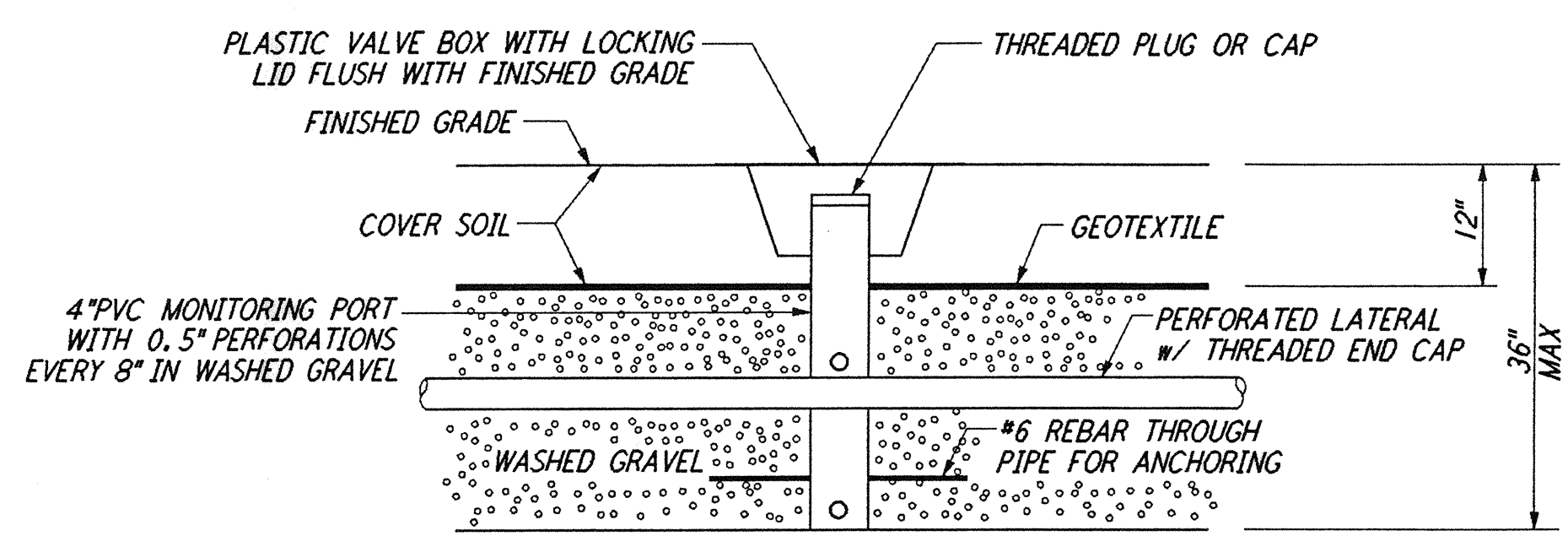
SECTION A-A

SECTION B-B

DOSING LIFT STATION 2  
 NOT TO SCALE  
 REF: WA-C-056, WA-C-010, WA-C-510



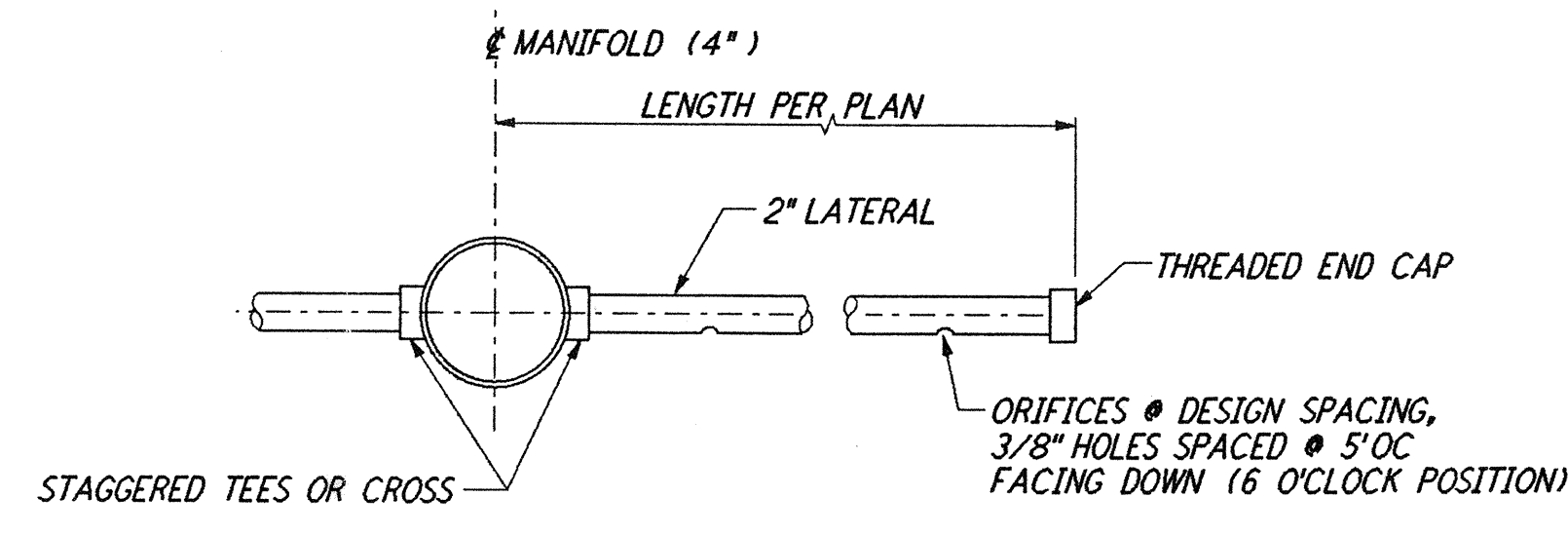
TYPICAL LATERAL SECTION



MONITORING PORT SECTION  
 (CONVENTIONAL TRENCH DETAIL)

- NOTES:**
- BANDED GEOTEXTILE IS OPTIONAL ON CONVENTIONAL TRENCH SYSTEMS, BUT IS REQUIRED ON SOIL TYPE 1A SAND-LINED TRENCHES OR BEDS
  - REQUIRED AT 4 CORNERS OF EACH LEACH FIELD.

LEACH FIELD 3  
 NOT TO SCALE  
 REF: WA-C-056, WA-C-010, WA-C-510



TYPICAL LATERAL CROSS  
 CONSTRUCTION W/ ORIFICES @ 6 O'CLOCK

not be reproduced, copied, loaned, exhibited, or used in any other way, except by written consent from PARSONS to the borrower.

This document and the design it covers are the property of PARSONS. They are loaned only with the borrower's expressed written agreement that they will

NO.	DATE	BY	CHKD	ENGR	PROJ	DESCRIPTION
A	4/19/96	WRB	MM	MM		FINAL DESIGN REVIEW & BID

DRAWN	WRB
CHECKED	
ENGINEER	
PROJ	

SCALE	AS NOTED
CONTRACT NUMBER	PP150969
PROJECT NUMBER	8094

**PARSONS**  
 100 WEST WALNUT STREET  
 PASADENA, CALIFORNIA

**LIGO**  
 CALIFORNIA INSTITUTE OF TECHNOLOGY  
 MASSACHUSETTS INSTITUTE OF TECHNOLOGY

LASER INTERFEROMETER  
 GRAVITATIONAL-WAVE OBSERVATORY  
 SITE NO. 1 - HANFORD, WASHINGTON

CIVIL  
 UTILITY DETAILS  
 SHEET 2

WA-C-056