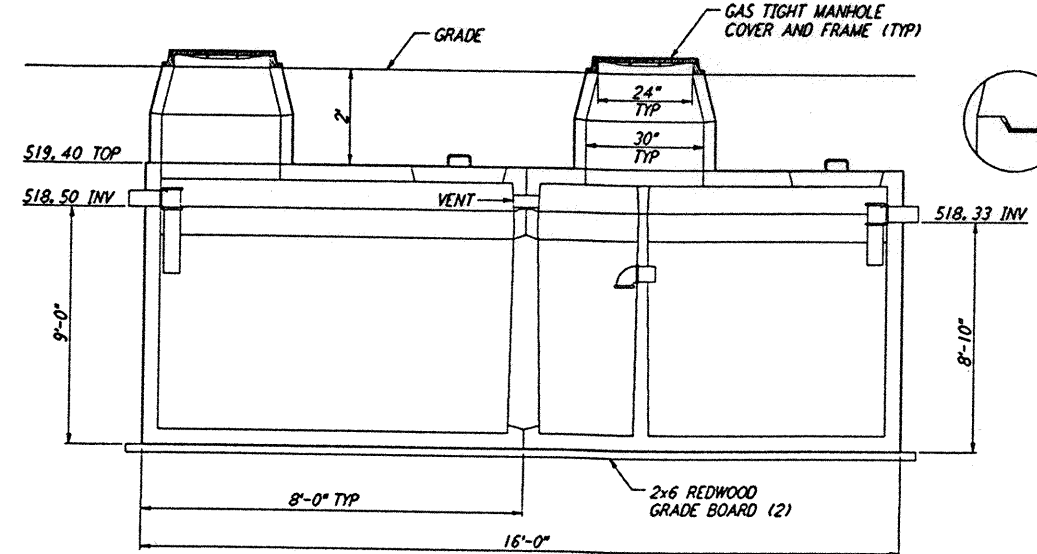
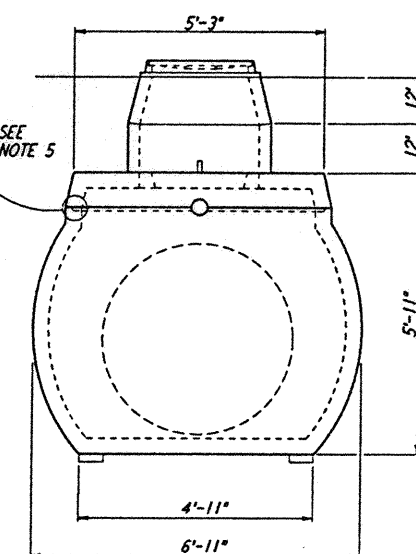


PLAN VIEW

- NOTES:**
1. MATERIAL SPECIFICATIONS:
    - A. CONCRETE, PORTLAND CEMENT TYPE II, MINIMUM COMPRESSIVE STRENGTH 3000 PSI AT 28 DAYS.
    - B. REINFORCING BARS INTERMEDIATE GRADE ASTM A615.
    - C. REINFORCING WELDED WIRE MESH ASTM A185.
  2. PRECAST UNIT COATED INSIDE AND OUT WITH AN APPROVED PROTECTIVE COATING.
  3. PRECAST UNIT TO BE PLACED ON NATURAL SOIL OR APPROVED COMPACTED FILL.
  4. INTERNAL FITTINGS 4" SEWER AND DRAIN U.P.C. APPROVED.
  5. STANDARD GROUND WATER SEAL - BUTYL ROPE MASTIC OR CEMENT MORTAR.



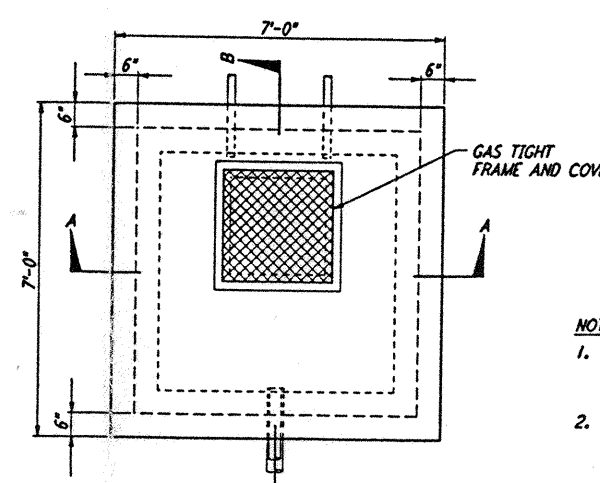
LONGITUDINAL SECTION



END VIEW

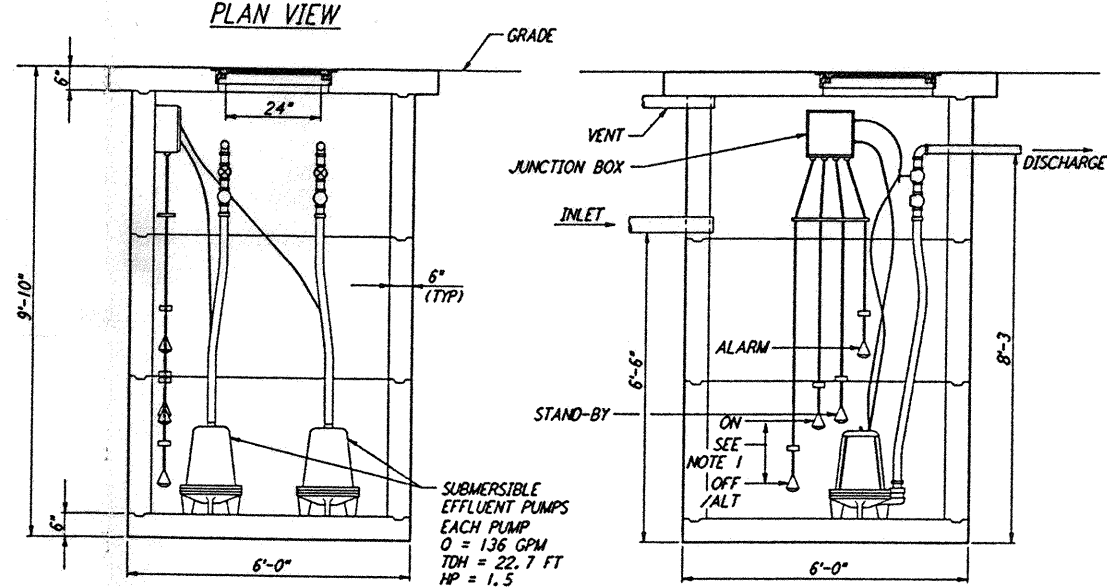
SEPTIC TANK (4500 GALLONS)  
 NOT TO SCALE

REF  
 WA-C-056 WA-C-510



PLAN VIEW

- NOTES:**
1. THE VOLUME CONTAINED BETWEEN THE OFF/ALT FLOAT AND THE ON FLOAT SHOULD BE EQUAL TO 75% OF THE LEACH LINE(S) SERVED BY EACH PUMP.
  2. DISCHARGE PLUMBING MAY BE ONE OF TWO CONFIGURATIONS:
    - A. THE CONFIGURATION SHOWN WILL DOSE 1/2 OF THE FIELD WITH EACH DISCHARGE.
    - B. COMBINING THE DISCHARGE PIPES WILL DOSE THE ENTIRE FIELD WITH EACH DISCHARGE.

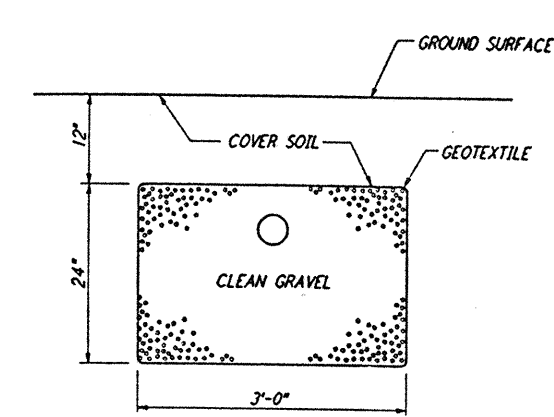


SECTION A-A

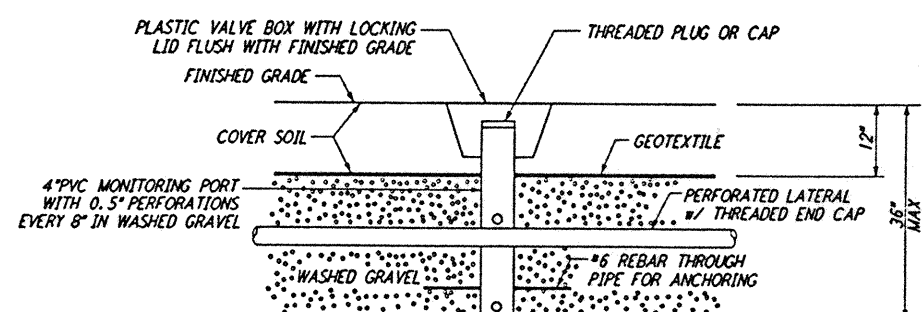
SECTION B-B

DOSING LIFT STATION  
 NOT TO SCALE

REF  
 WA-C-056 WA-C-510

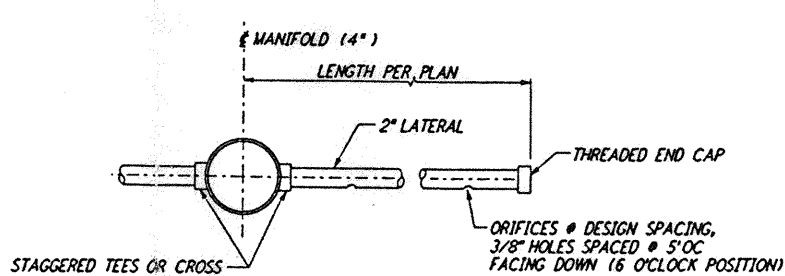


TYPICAL LATERAL SECTION



- NOTES:**
1. BANNED GEOTEXTILE IS OPTIONAL ON CONVENTIONAL TRENCH SYSTEMS, BUT IS REQUIRED ON SOIL TYPE I(A) SAND-LINED TRENCHES OR BEDS.
  2. REQUIRED AT 4 CORNERS OF EACH LEACH FIELD.

MONITORING PORT SECTION  
 (CONVENTIONAL TRENCH DETAIL)



TYPICAL LATERAL CROSS  
 CONSTRUCTION w/ ORIFICES @ 6 O'CLOCK

LEACH FIELD  
 NOT TO SCALE

REF  
 WA-C-056 WA-C-510

This document and the design it covers are the property of PARSONS. They are loaned only with the borrower's expressed written agreement that they will not be reproduced, copied, loaned, exhibited, or used in any other way, except by written consent from PARSONS to the borrower.

NO.	DATE	BY	CHKD	EMGR	PROJ	DESCRIPTION
A	4/19/98	WRB	NA			FINAL DESIGN REVIEW & BID

DRAWN	WRB
CHECKED	
ENGINEER	
PROJ	

**PARSONS**  
 100 WEST WALNUT STREET  
 PASADENA, CALIFORNIA

**LIGO**  
 CALIFORNIA INSTITUTE OF TECHNOLOGY  
 MASSACHUSETTS INSTITUTE OF TECHNOLOGY

LASER INTERFEROMETER  
 GRAVITATIONAL-WAVE OBSERVATORY  
 SITE NO. 1 - HANFORD, WASHINGTON

CIVIL  
 UTILITY DETAILS  
 SHEET 2

SCALE: AS NOTED  
 CONTRACT NUMBER: PPI50969  
 PROJECT NUMBER: 8094  
 SHEET NUMBER: WA-C-056