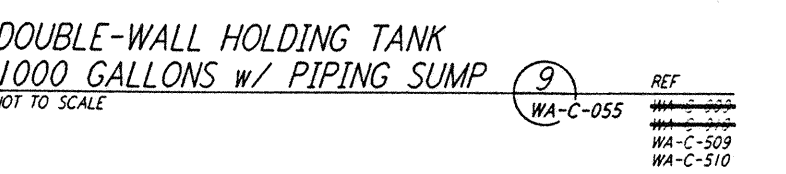
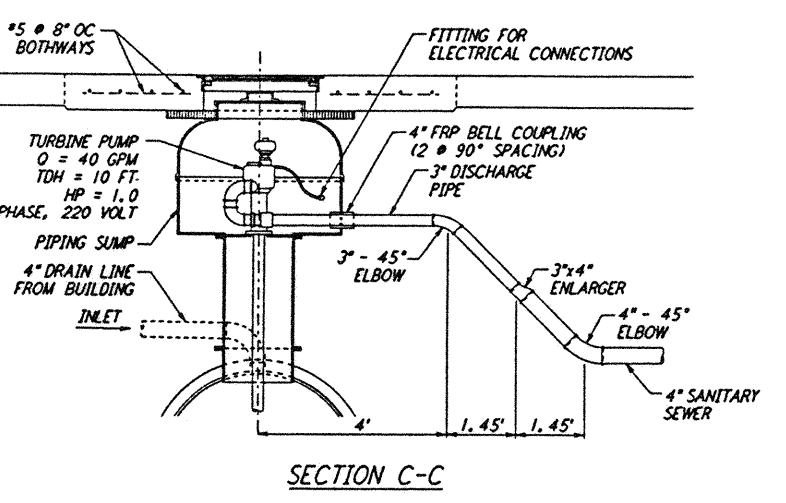
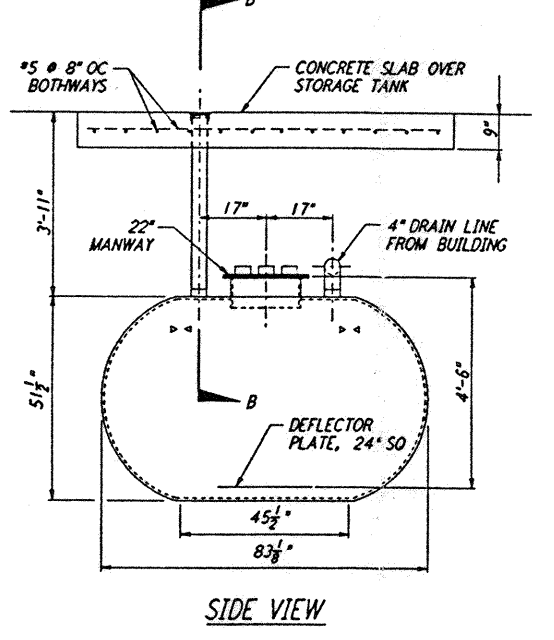
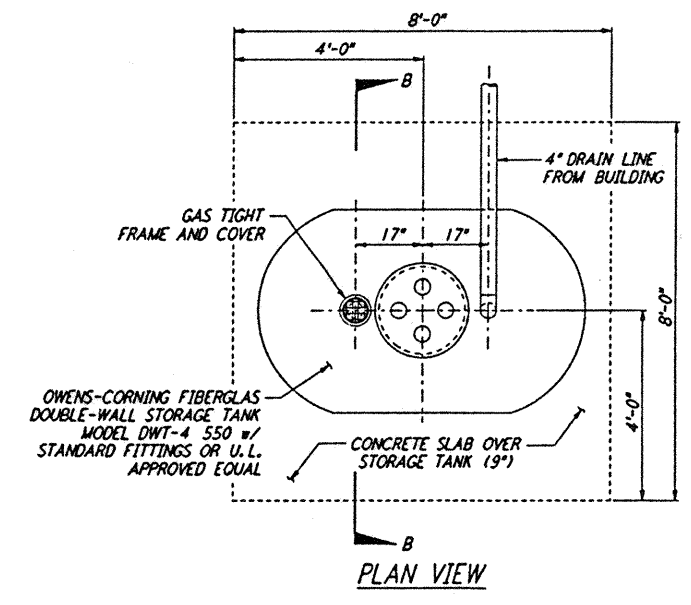
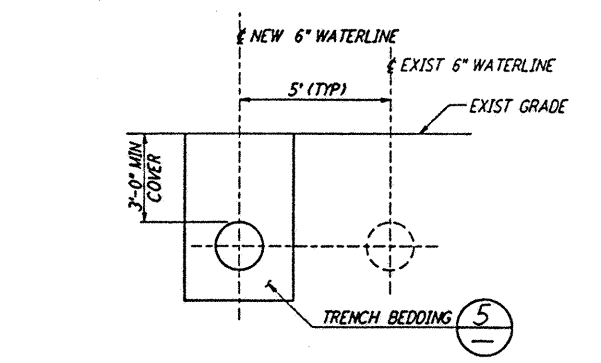
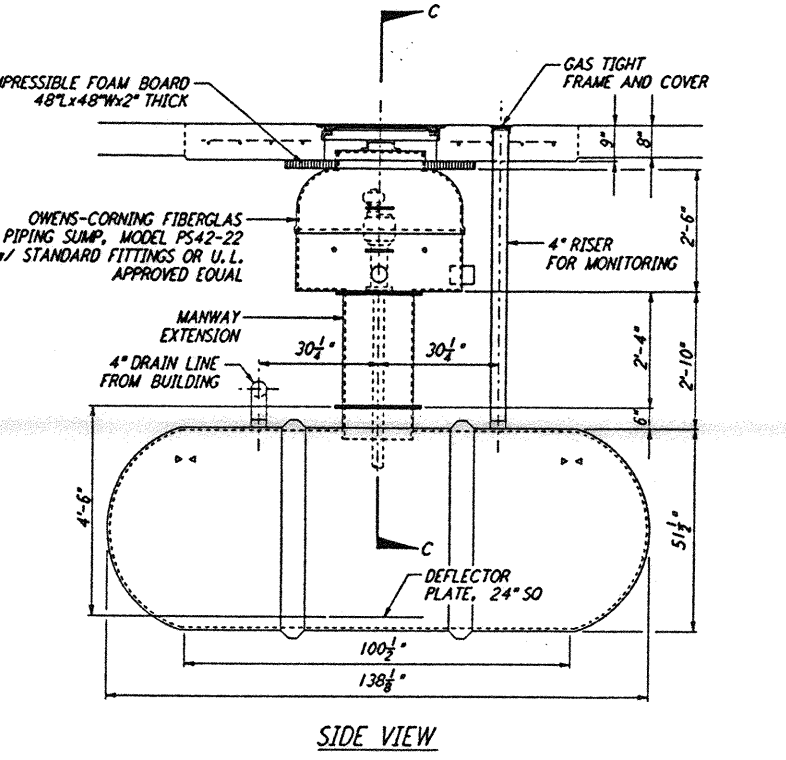
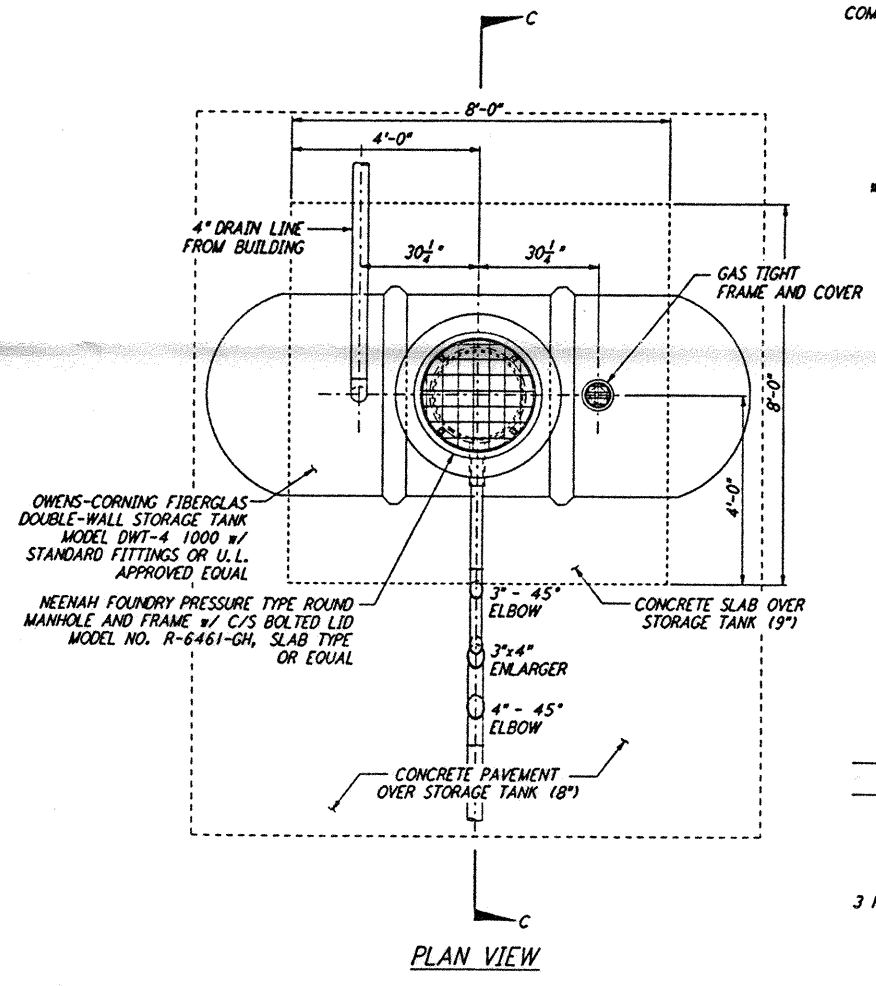
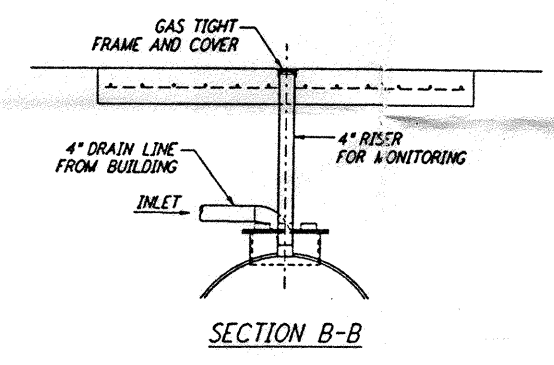
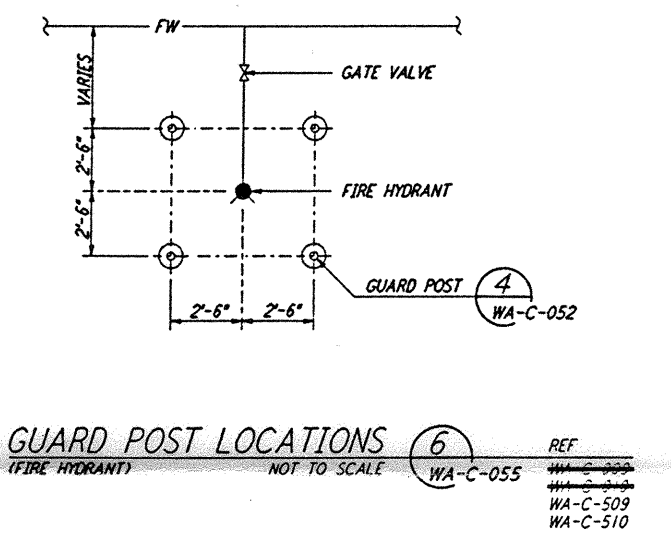
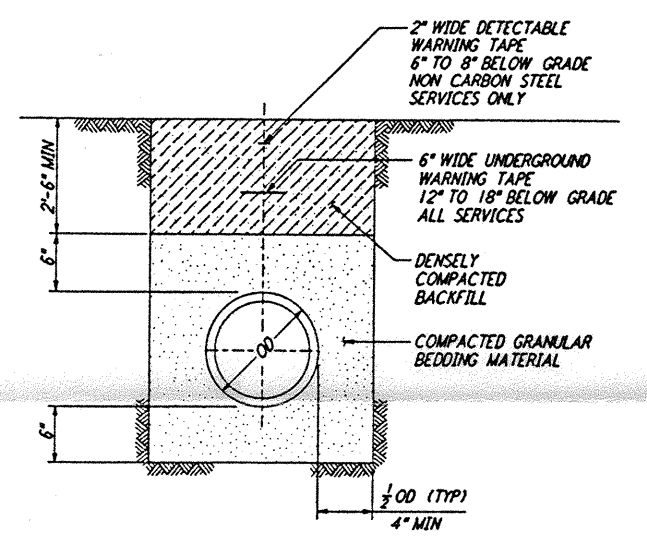
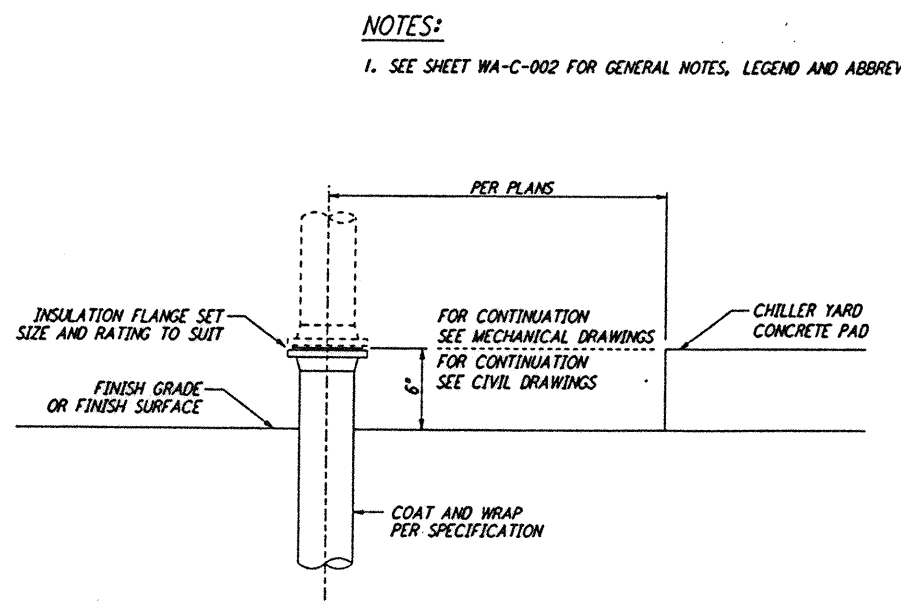


TYPE	SIZE	90° BEND		45° BEND		22½° BEND		TEE		PLUG	
		A	B	A	B	A	B	A	B	C	D
TYPE I 4000 PSI FILL	4"	6"	8"	4"	6"	3"	6"	6"	6"	8"	13"
	6"	8"	10"	6"	8"	3"	8"	8"	8"	10"	15"
	8"	12"	12"	8"	10"	5"	3"	12"	12"	12"	20"
	10"	16"	14"	10"	12"	6"	10"	11"	14"	14"	25"
	12"	18"	16"	12"	14"	8"	11"	14"	16"	16"	30"
TYPE II 2000 PSI FILL	4"	14"	8"	7"	8"	4"	6"	8"	10"	8"	19"
	6"	16"	10"	9"	10"	6"	8"	10"	12"	10"	21"
	8"	22"	13"	12"	13"	8"	10"	13"	16"	12"	20"
	10"	26"	17"	14"	17"	10"	13"	16"	20"	14"	26"
	12"	29"	21"	18"	21"	11"	16"	18"	24"	16"	41"
14"	35"	24"	19"	24"	12"	20"	22"	27"	18"	48"	



This document and the design it covers are the property of PARSONS. They are loaned only with the borrower's expressed written agreement that they will not be reproduced, copied, loaned, exhibited, or used in any other way, except by written consent from PARSONS to the borrower.

NO.	DATE	BY	CHKD	ENGR	PROJ	DESCRIPTION
A	4/19/96	WRB				FINAL DESIGN REVIEW & BID

DRAWN	WRB
CHECKED	
ENGINEER	
PROJ	

PARSONS
100 WEST WALNUT STREET
PASADENA, CALIFORNIA

LIGO
CALIFORNIA INSTITUTE OF TECHNOLOGY
MASSACHUSETTS INSTITUTE OF TECHNOLOGY

LASER INTERFEROMETER
GRAVITATIONAL-WAVE OBSERVATORY
SITE NO. 1 - HANFORD, WASHINGTON

CIVIL
UTILITY DETAILS
SHEET 1

AS NOTED PPI50969 8094
WA-C-055