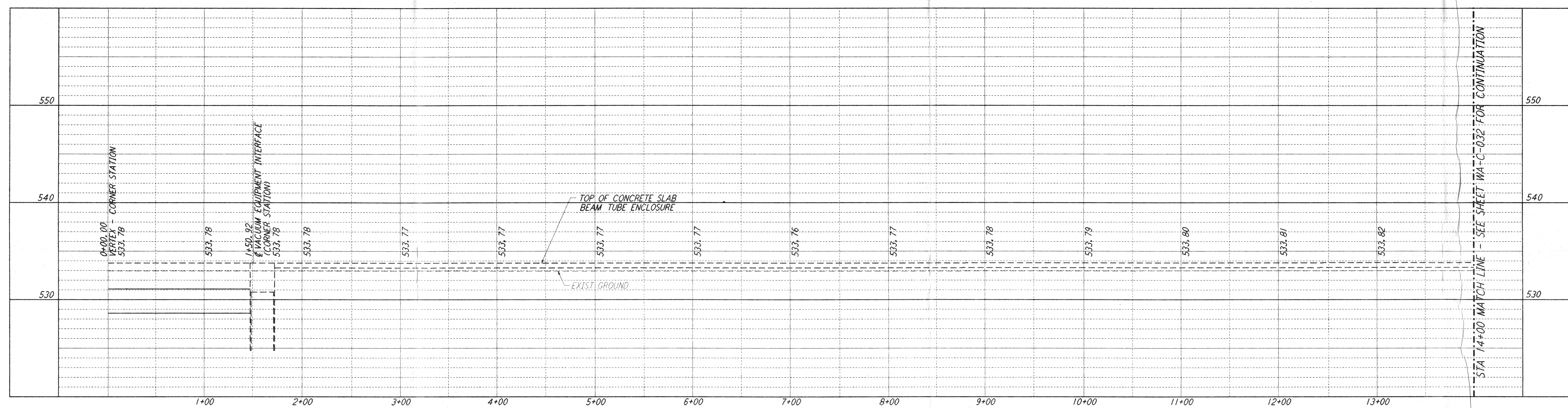
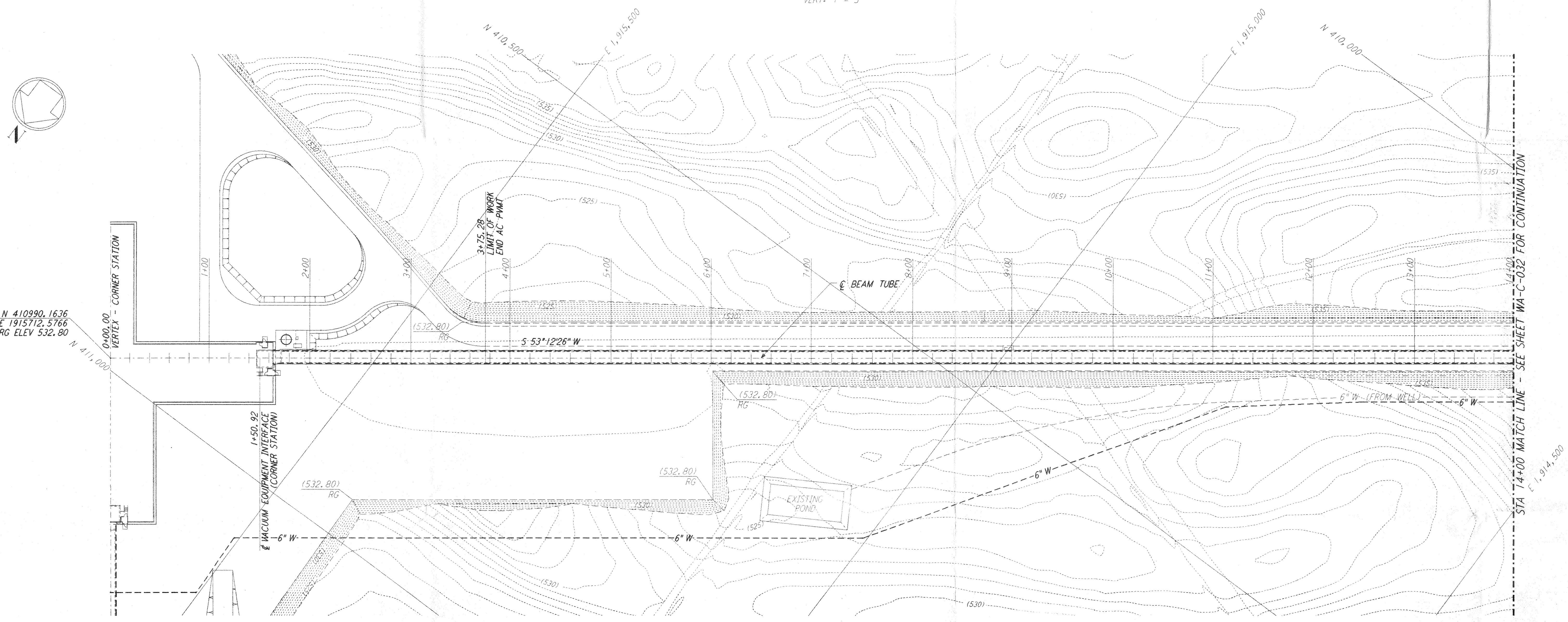


This document and the design it covers are the property of PARSONS. They are loaned only with the borrower's expressed written agreement that they will not be reproduced, copied, loaned, exhibited, or used in any other way, except by written consent from PARSONS to the borrower.

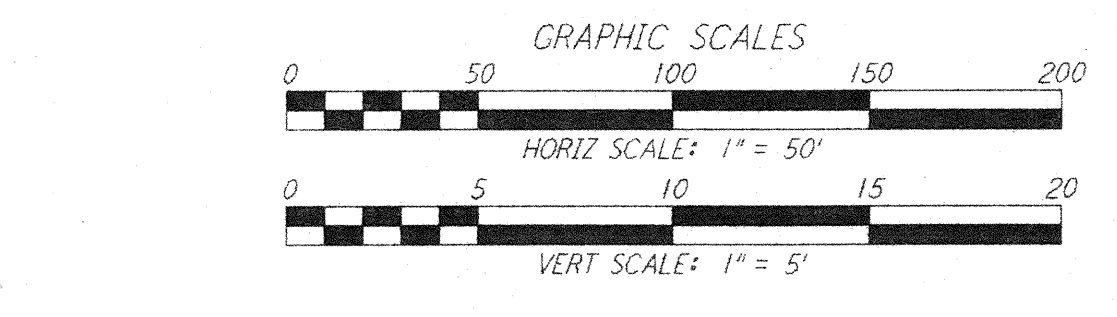
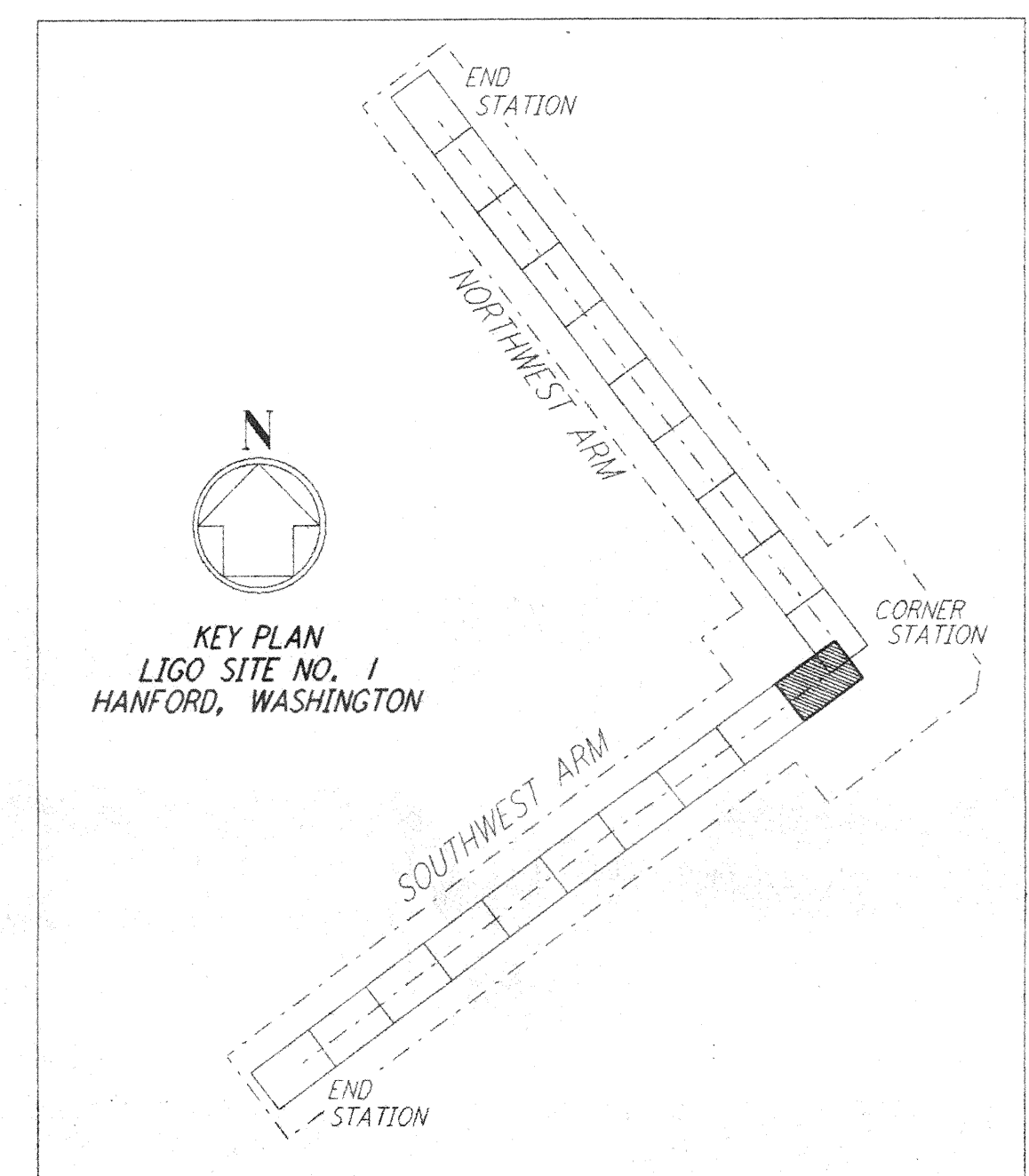
NOTES:
 1. SEE SHEET WA-C-002 FOR GENERAL NOTES, LEGEND AND ABBREVIATIONS.



PROFILE
 SCALES: HORIZ: 1" = 50'
 VERT: 1" = 5'



PLAN
 SCALE: 1" = 50'



NOTE:
 SEE SHEET WA-C-505 FOR PLOT PLAN,
 SHEET WA-C-507 FOR GRADING PLAN
 AND SHEET WA-C-509 FOR UTILITY PLAN
 AT CORNER STATION.

NO.	DATE	BY	CHKD	ENGR	PROJ	DESCRIPTION

FOR CONSTRUCTION	
DRAWN	WRB 9/28/95
CHECKED	ML 7/7/96
ENGINEER	ML 7/7/96
PROJ	MLW 7/19/96

John Blain
 2/13/97

PARSONS
 100 WEST WALNUT STREET
 PASADENA, CALIFORNIA

LIGO
 CALIFORNIA INSTITUTE OF TECHNOLOGY
 MASSACHUSETTS INSTITUTE OF TECHNOLOGY

LASER INTERFEROMETER
 GRAVITATIONAL-WAVE OBSERVATORY
SITE NO. 1 - HANFORD, WASHINGTON

TITLE	CIVIL SOUTHWEST ARM PLAN AND PROFILE STA 0+00 TO STA 14+00	SHEET NUMBER	AS NOTED	CONTRACT NUMBER	PP150969	PROJECT NUMBER	8094
WA-C-031			REVISIONS		(Symbol)		