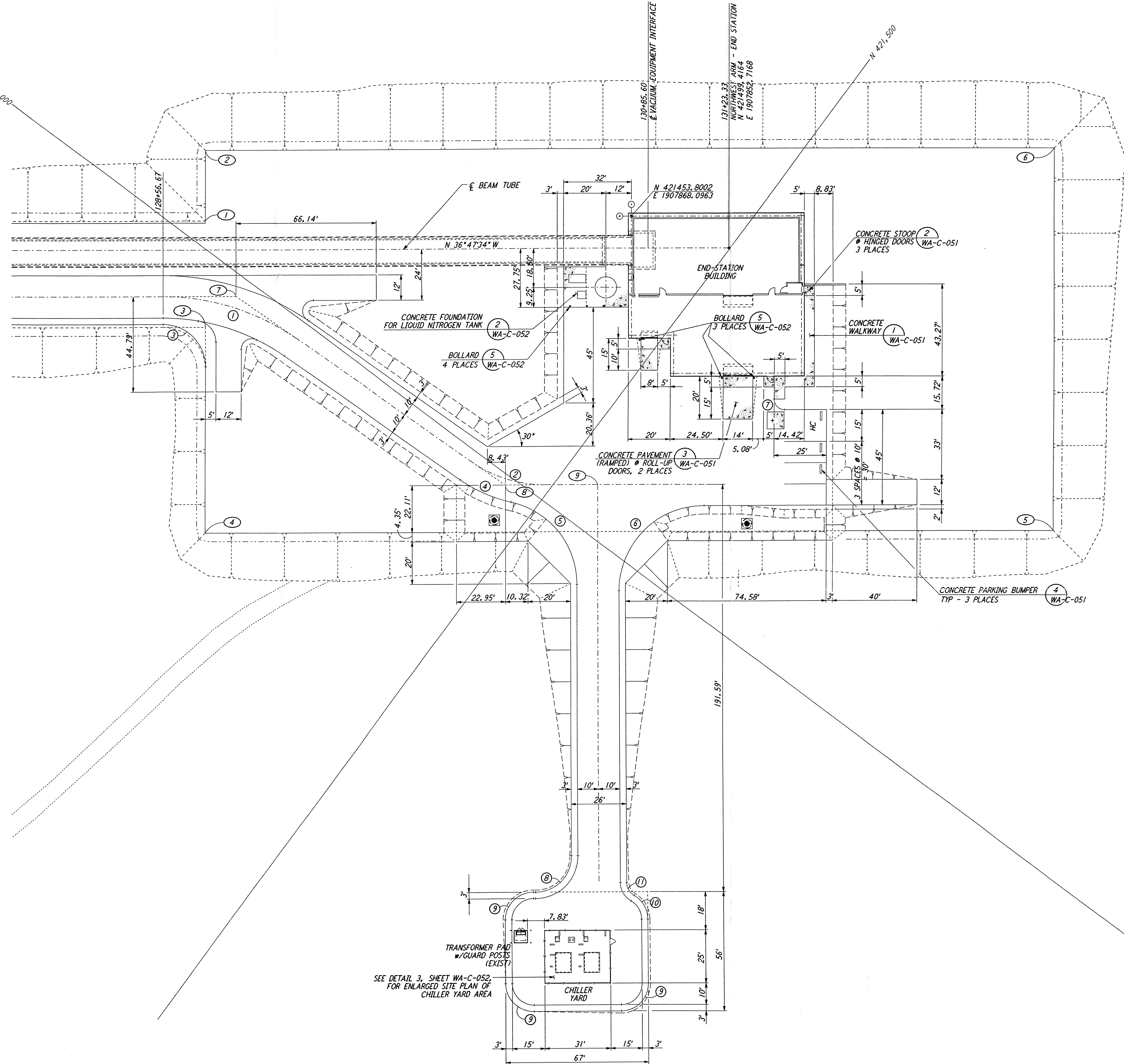
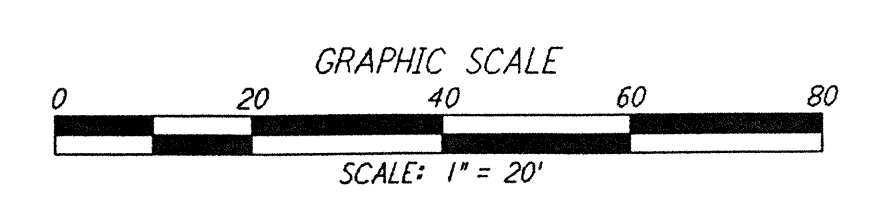
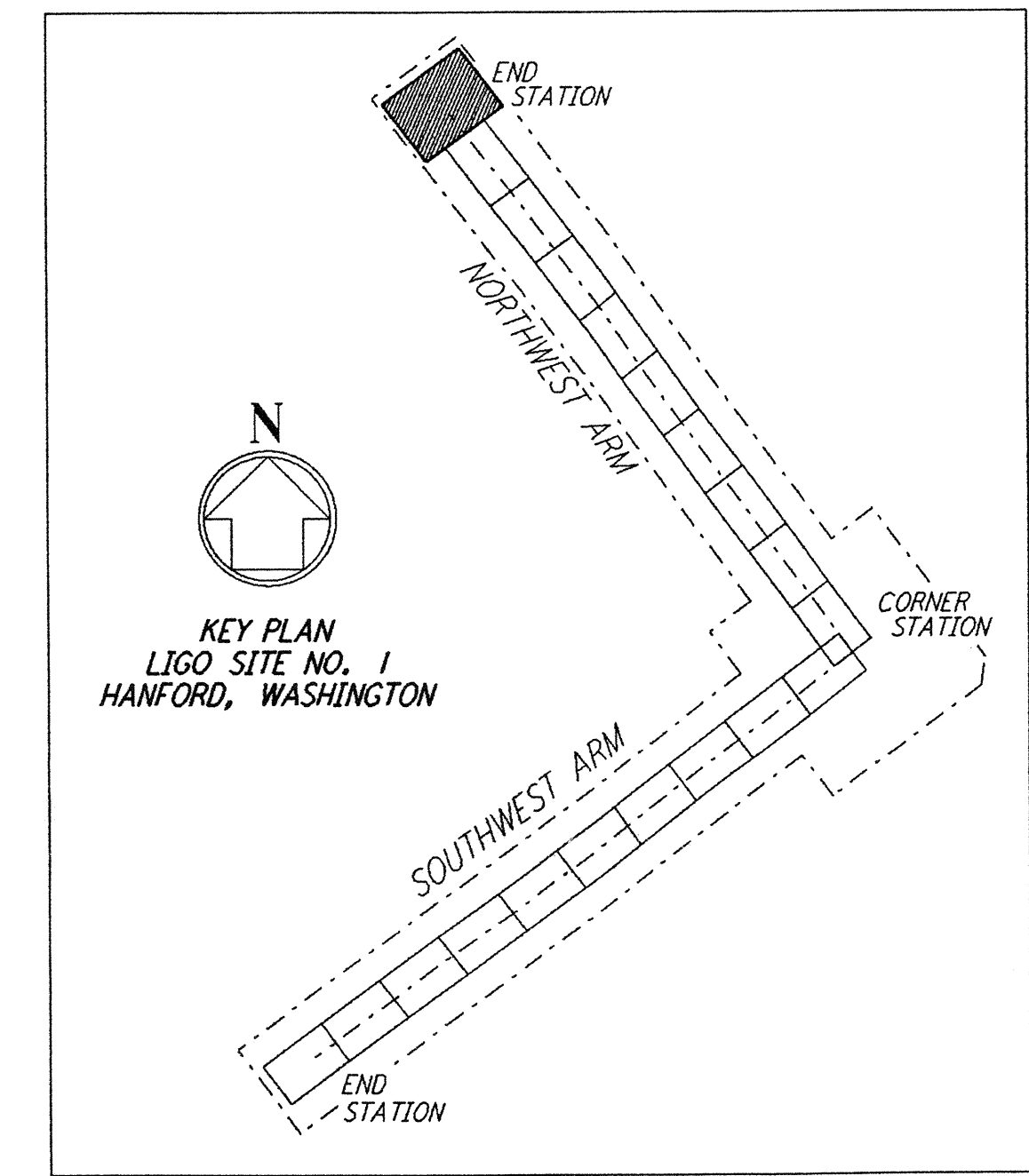


**NOTES:**  
 1. SEE SHEET WA-C-002 FOR GENERAL NOTES, LEGEND AND ABBREVIATIONS.



CURVE DATA					
Station	Δ	RADIUS	LENGTH	TANGENT	REMARK
1	35°00'00"	110'	67.19'	34.68'	⊕ ROAD
2	35°00'00"	60'	36.65'	18.92'	⊕ ROAD
3	90°00'00"	20'	31.42'	20.00'	EDGE OF PAD (EXIST)
4	21°32'41"	70'	26.32'	13.32'	
5	76°32'48"	40'	53.44'	31.56'	
6	90°00'00"	40'	62.83'	40.00'	
7	90°00'00"	5'	7.85'	5.00'	
8	90°00'00"	17'	26.70'	17.00'	
9	90°00'00"	13'	20.42'	13.00'	
10	60°00'00"	13'	13.61'	7.51'	
11	60°00'00"	7'	7.33'	4.04'	

COORDINATES			
Station	NORTH	EAST	REMARK
1	421293.7018	1907989.5052	PI EDGE OF PAD (EXIST)
2	421273.9370	1907963.0780	PI EDGE OF PAD (EXIST)
3	421323.6476	1908029.5453	PI EDGE OF PAD (EXIST)
4	421381.7426	1908107.2235	PI EDGE OF PAD (EXIST)
5	421702.0661	1907867.6549	PI EDGE OF PAD (EXIST)
6	421594.2603	1907723.5094	PI EDGE OF PAD (EXIST)
7	421326.8209	1908009.2730	PI ⊕ ROAD
8	421482.2935	1908004.4068	PI ⊕ ROAD
9	421516.9860	1907978.4605	⊕ ROAD INTERSECTION



not be reproduced, copied, loaned, exhibited, or used in any other way, except by written consent from PARSONS to the borrower.

This document and the design it covers are the property of PARSONS. They are loaned only with the borrower's expressed written agreement that they will

NO.	DATE	BY	CHKD	ENGR	PROJ	DESCRIPTION
A	4/19/96	WRB	MM	MM	MM	FINAL DESIGN REVIEW & BID

DRAWN	WRB
CHECKED	
ENGINEER	
PROJ	

**PARSONS**  
 100 WEST WALNUT STREET  
 PASADENA, CALIFORNIA

**LIGO**  
 CALIFORNIA INSTITUTE OF TECHNOLOGY  
 MASSACHUSETTS INSTITUTE OF TECHNOLOGY

LASER INTERFEROMETER  
 GRAVITATIONAL-WAVE OBSERVATORY  
 SITE NO. I - HANFORD, WASHINGTON

CIVIL  
 NORTHWEST ARM  
 END-STATION  
 PLOT PLAN

SCALE: 1" = 20'  
 CONTRACT NUMBER: PPI50969  
 PROJECT NUMBER: 8094  
 SHEET NUMBER: **WA-C-025**