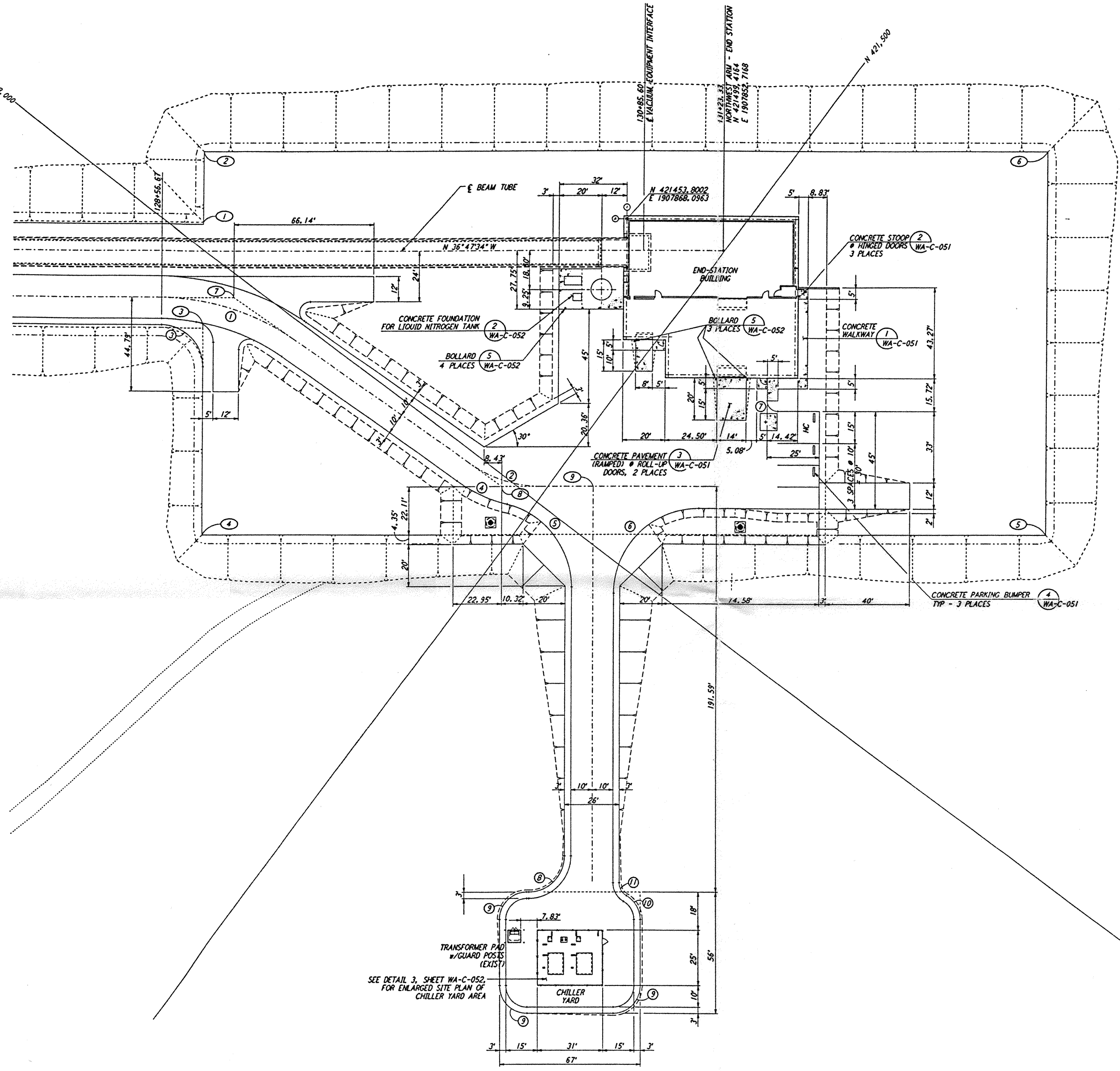
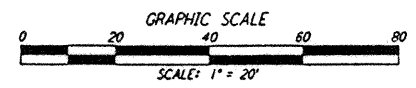
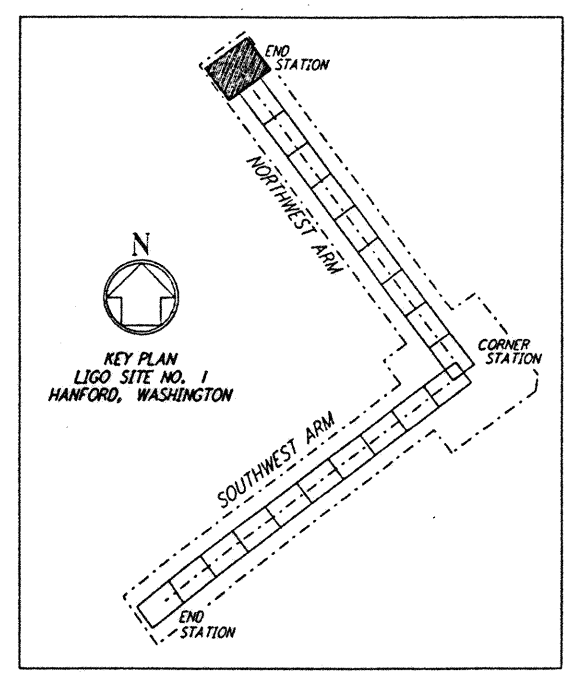


NOTES:
 1. SEE SHEET WA-C-002 FOR GENERAL NOTES, LEGEND AND ABBREVIATIONS.



CURVE DATA					
Δ	RADIUS	LENGTH	TANGENT	REMARK	
1	35°00'00"	110'	67.18'	34.68'	€ ROAD
2	35°00'00"	60'	36.65'	18.32'	€ ROAD
3	90°00'00"	20'	31.42'	20.00'	EDGE OF PAD (EXIST)
4	21°32'41"	70'	26.32'	13.32'	
5	76°32'48"	40'	53.44'	31.56'	
6	90°00'00"	40'	62.83'	40.00'	
7	90°00'00"	5'	7.85'	5.00'	
8	90°00'00"	17'	26.70'	17.00'	
9	90°00'00"	13'	20.42'	13.00'	
10	60°00'00"	13'	13.61'	7.51'	
11	60°00'00"	7'	7.33'	4.04'	

COORDINATES			REMARK
Δ	NORTH	EAST	
1	421293.7018	1907989.5052	PI € ROAD
2	421273.9370	1907963.0780	PI € ROAD
3	421323.6476	1908029.5453	PI € ROAD
4	421381.7426	1908107.2235	PI € ROAD
5	421702.0661	1907867.6549	PI € ROAD
6	421594.2603	1907723.5094	PI € ROAD
7	421326.8209	1908009.2730	PI € ROAD
8	421482.2935	1908004.4068	PI € ROAD
9	421516.9860	1907978.4805	€ ROAD INTERSECTION



This document and the design it covers are the property of PARSONS. They are loaned only with the borrower's expressed written agreement that they will not be reproduced, copied, loaned, exhibited, or used in any other way, except by written consent from PARSONS to the borrower.

This document and the design it covers are the property of PARSONS. They are loaned only with the borrower's expressed written agreement that they will not be reproduced, copied, loaned, exhibited, or used in any other way, except by written consent from PARSONS to the borrower.

NO.	DATE	BY	CHKD	ENGR	PROJ	DESCRIPTION
A	4/19/96	WRB	NA	NA	NA	FINAL DESIGN REVIEW & BID

DRAWN	WRB
CHECKED	
ENGINEER	
PROJ	

PARSONS
 100 WEST WALNUT STREET
 PASADENA, CALIFORNIA

LIGO
 CALIFORNIA INSTITUTE OF TECHNOLOGY
 MASSACHUSETTS INSTITUTE OF TECHNOLOGY

LASER INTERFEROMETER GRAVITATIONAL-WAVE OBSERVATORY SITE NO. 1 - HANFORD, WASHINGTON			
TITLE	SCALE	CONTRACT NUMBER	PROJECT NUMBER
CIVIL NORTHWEST ARM END-STATION PLOT PLAN	1" = 20'	PP150969	8094
SHEET NUMBER		REVISION	
WA-C-025			

LIGO D860215-A-11