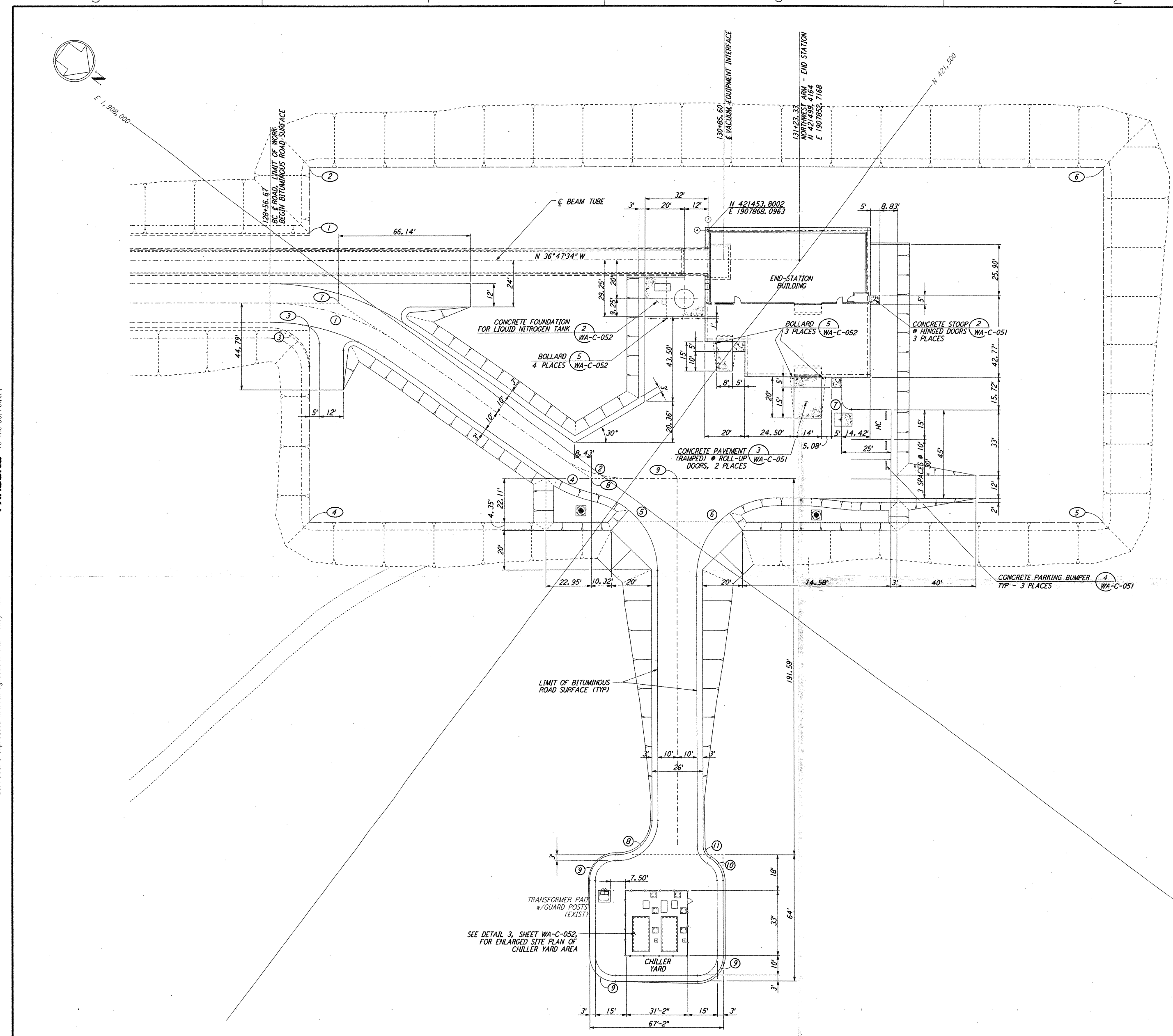
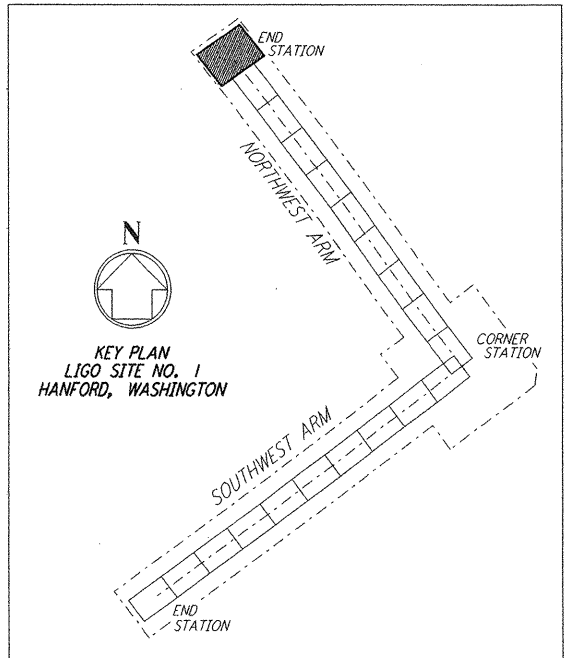


NOTES:  
 1. SEE SHEET WA-C-002 FOR GENERAL NOTES, LEGEND AND ABBREVIATIONS.



CURVE DATA					
Δ	RADIUS	LENGTH	TANGENT	REMARK	
1	35°00'00"	110'	67.19'	34.68'	∅ ROAD
2	35°00'00"	60'	36.65'	18.92'	∅ ROAD
3	90°00'00"	20'	31.42'	20.00'	EDGE OF PAD (EXIST)
4	21°32'41"	70'	26.32'	13.32'	
5	76°32'48"	40'	53.44'	31.56'	
6	90°00'00"	40'	62.83'	40.00'	
7	90°00'00"	5'	7.85'	5.00'	
8	90°00'00"	17'	26.70'	17.00'	
9	90°00'00"	13'	20.42'	13.00'	
10	60°00'00"	13'	13.61'	7.51'	
11	60°00'00"	7'	7.33'	4.04'	

COORDINATES			REMARK
Δ	NORTH	EAST	
1	421293.7018	1907989.5052	PI EDGE OF PAD (EXIST)
2	421273.9370	1907963.0780	PI EDGE OF PAD (EXIST)
3	421323.6476	1908029.5453	PI EDGE OF PAD (EXIST)
4	421381.7426	1908107.2235	PI EDGE OF PAD (EXIST)
5	421702.0661	1907867.6549	PI EDGE OF PAD (EXIST)
6	421594.2603	1907723.5094	PI EDGE OF PAD (EXIST)
7	421326.8209	1908009.2730	PI ∅ ROAD
8	421482.2935	1908004.4068	PI ∅ ROAD
9	421516.9860	1907978.4605	∅ ROAD INTERSECTION



This document and the design it covers are the property of PARSONS. They are loaned only with the borrower's expressed written agreement that they will not be reproduced, copied, loaned, exhibited, or used in any other way, except by written consent from PARSONS to the borrower.

NO.	DATE	BY	CHKD	ENGR	PROJ	DESCRIPTION
1	5/15/98	WRB				ISSUED FOR AS-BUILT

FOR CONSTRUCTION	DRAWN	WRB	9/28/95
CHECKED	ML	7/9/96	
ENGINEER	JB	7/9/96	
PROJ	MDW	7/9/96	

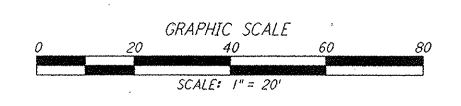
<b>AS-BUILT DRAWINGS</b>	
--------------------------	--

**PARSONS**  
 100 WEST WALNUT STREET  
 PASADENA, CALIFORNIA

**LIGO**  
 CALIFORNIA INSTITUTE OF TECHNOLOGY  
 MASSACHUSETTS INSTITUTE OF TECHNOLOGY

LIGO-D960215-01-0  
 LASER INTERFEROMETER  
 GRAVITATIONAL-WAVE OBSERVATORY  
 SITE NO. 1 - HANFORD, WASHINGTON

TITLE	CIVIL NORTHWEST ARM END-STATION PLOT PLAN	SCALE	1" = 20'	CONTRACT NUMBER	PP150969	PROJECT NUMBER	8094
SHEET NUMBER	WA-C-025	REVISIONS					



Han 111.05 144927 1998 C:\VPL\DTA\GUE\31-V\9882.DWG 5/28/98 KAV\9882-01-01.dwg