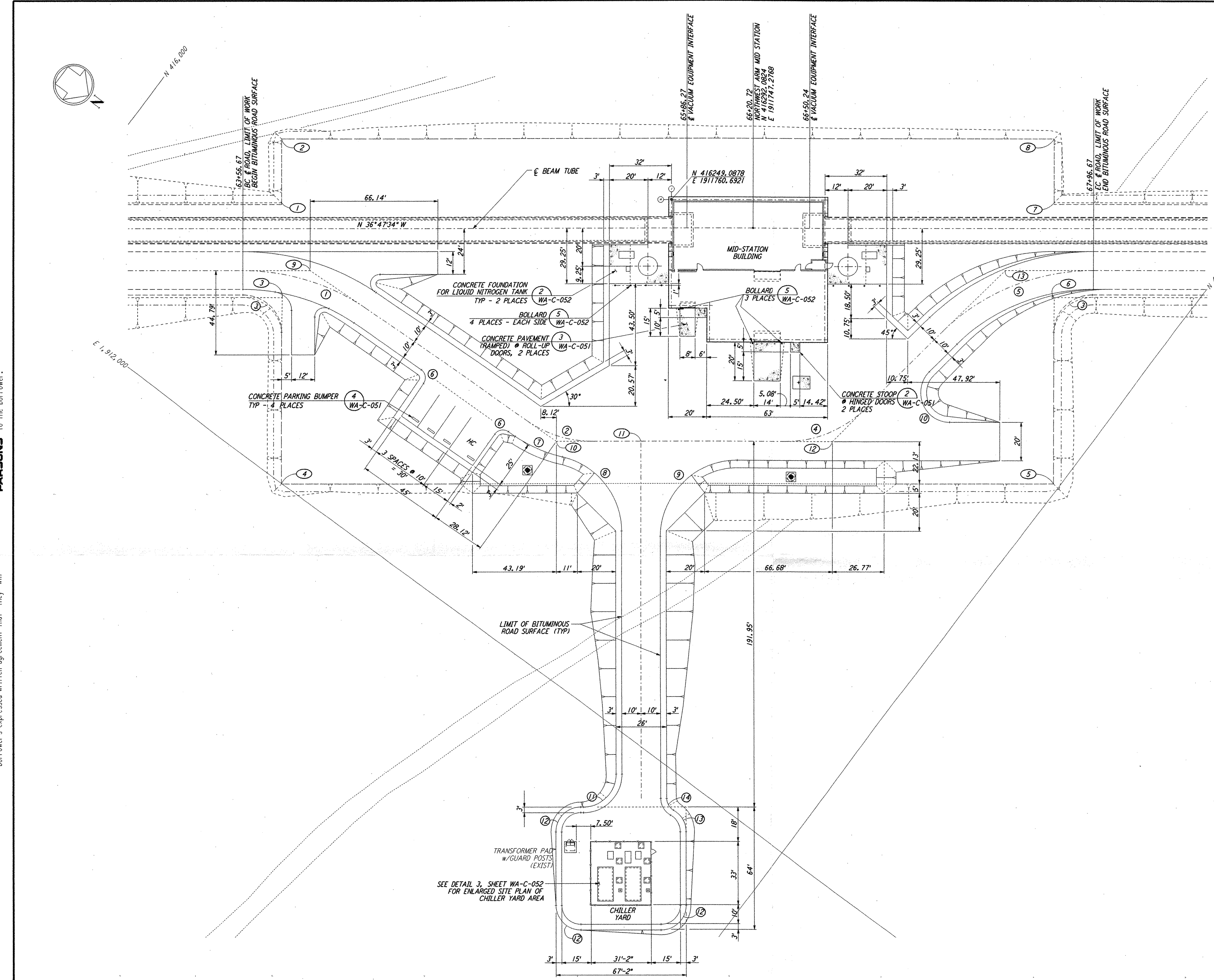
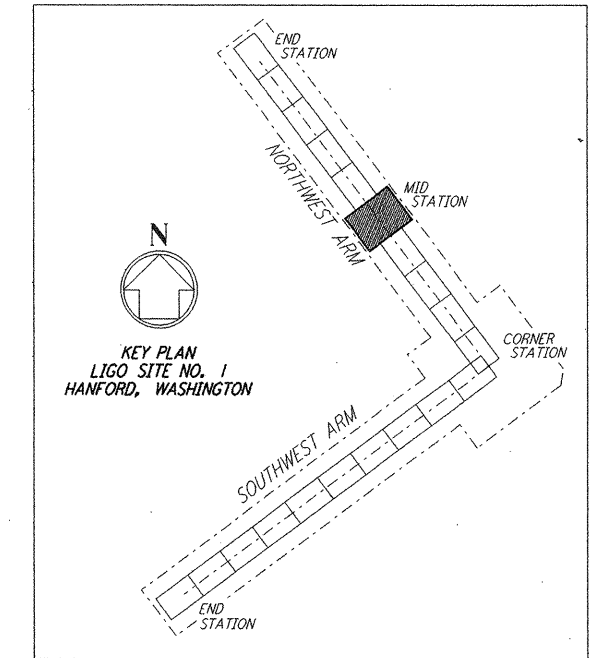


NOTES:
 1. SEE SHEET WA-C-002 FOR GENERAL NOTES, LEGEND AND ABBREVIATIONS.

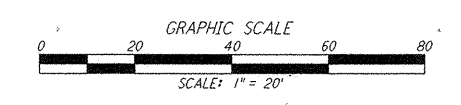


CURVE DATA					
Δ	RADIUS	LENGTH	TANGENT	REMARK	
1	35°00'00"	110'	67.19'	34.68'	∅ ROAD
2	35°00'00"	60'	36.65'	18.92'	∅ ROAD
3	90°00'00"	20'	31.42'	20.00'	EDGE OF PAD (EXIST)
4	45°00'00"	60'	47.12'	24.85'	∅ ROAD
5	45°00'00"	110'	86.39'	45.56'	∅ ROAD
6	90°00'00"	5'	7.85'	5.00'	
7	21°54'32"	70'	26.77'	13.55'	
8	76°54'31"	40'	53.69'	31.77'	
9	90°00'00"	40'	62.83'	40.00'	
10	135°00'00"	15'	35.34'	36.21'	
11	90°00'00"	17'	26.70'	17.00'	
12	90°00'00"	13'	20.42'	13.00'	
13	60°00'00"	13'	13.61'	7.51'	
14	60°00'00"	7'	7.33'	4.04'	

COORDINATES			REMARK
Δ	NORTH	EAST	
1	416088.4565	1911882.5024	PI EDGE OF PAD (EXIST)
2	416068.6920	1911856.0760	PI EDGE OF PAD (EXIST)
3	416118.4031	1911922.5429	PI EDGE OF PAD (EXIST)
4	416176.4990	1912000.2210	PI EDGE OF PAD (EXIST)
5	416496.8210	1911760.6520	PI EDGE OF PAD (EXIST)
6	416438.7258	1911682.9742	PI EDGE OF PAD (EXIST)
7	416408.7793	1911642.9335	PI EDGE OF PAD (EXIST)
8	416389.0150	1911616.5070	PI EDGE OF PAD (EXIST)
9	416121.5765	1911902.2703	PI ∅ ROAD
10	416277.0283	1911897.4046	PI ∅ ROAD
11	416312.2681	1911871.0488	∅ ROAD INTERSECTION
12	416382.0946	1911811.3466	PI ∅ ROAD
13	416410.1040	1911686.4089	PI ∅ ROAD



LIGO-D960212-01-0



This document and the design it covers are the property of PARSONS. They are loaned only with the borrower's expressed written agreement that they will not be reproduced, copied, loaned, exhibited, or used in any other way, except by written consent from PARSONS to the borrower.

This document and the design it covers are the property of PARSONS. They are loaned only with the borrower's expressed written agreement that they will not be reproduced, copied, loaned, exhibited, or used in any other way, except by written consent from PARSONS to the borrower.

NO.	DATE	BY	CHKD	ENGR	PRJ	DESCRIPTION
1	5/15/98	WRB				ISSUED FOR AS-BUILT

FOR CONSTRUCTION
 DRAWN: WRB 9/28/95
 CHECKED: ML 7/9/96
 ENGINEER: JB 7/9/96
 PROJ: MDW 7/9/96

AS-BUILT DRAWINGS

PARSONS
 100 WEST WALNUT STREET
 PASADENA, CALIFORNIA

LIGO
 CALIFORNIA INSTITUTE OF TECHNOLOGY
 MASSACHUSETTS INSTITUTE OF TECHNOLOGY

LASER INTERFEROMETER
 GRAVITATIONAL-WAVE OBSERVATORY
 SITE NO. 1 - HANFORD, WASHINGTON

TITLE: CIVIL NORTHWEST ARM MID-STATION PLOT PLAN
 SCALE: 1" = 20'
 CONTRACT NUMBER: PPI50969
 PROJECT NUMBER: 8094
 SHEET NUMBER: WA-C-021