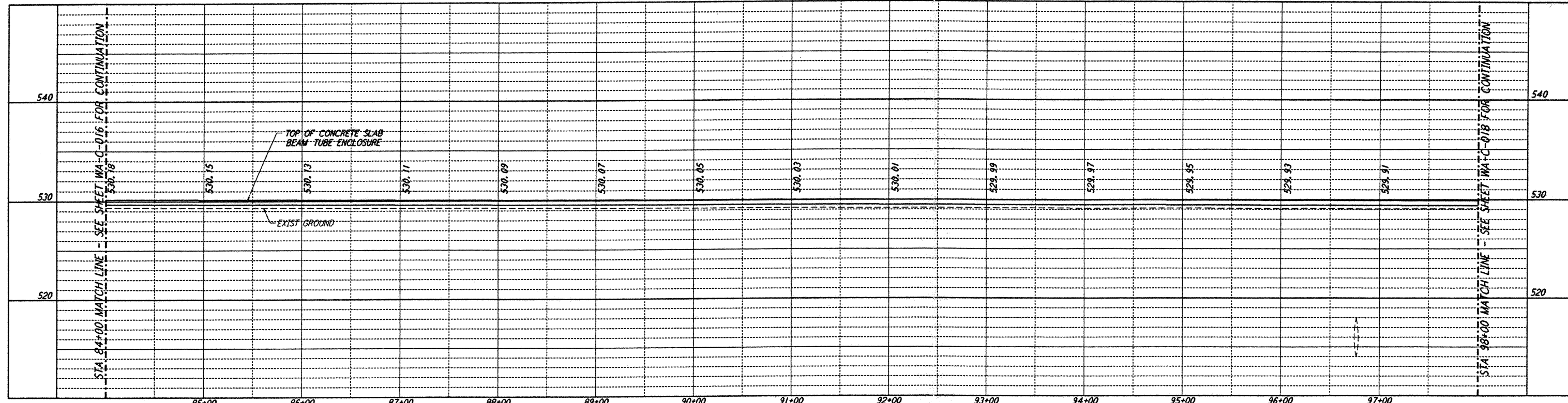
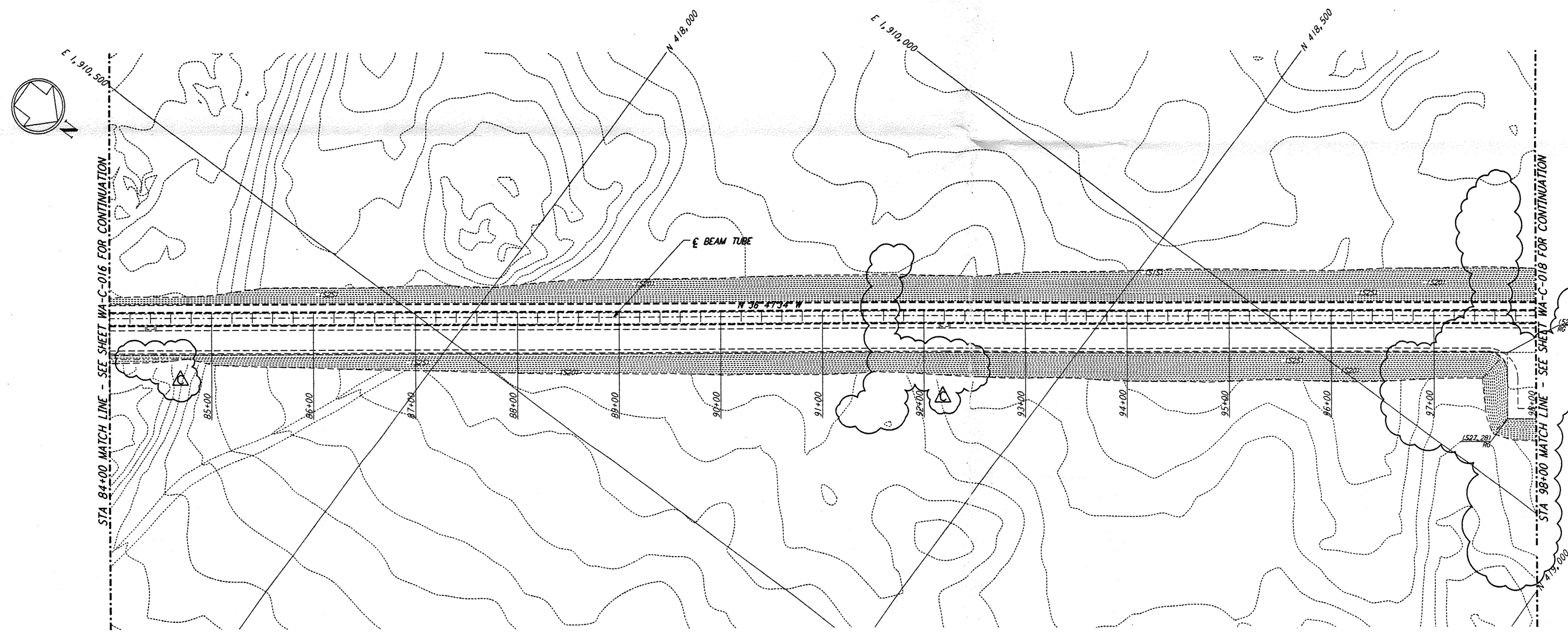


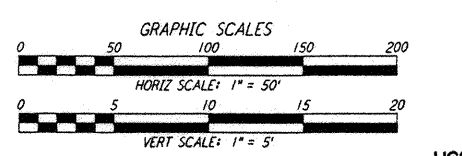
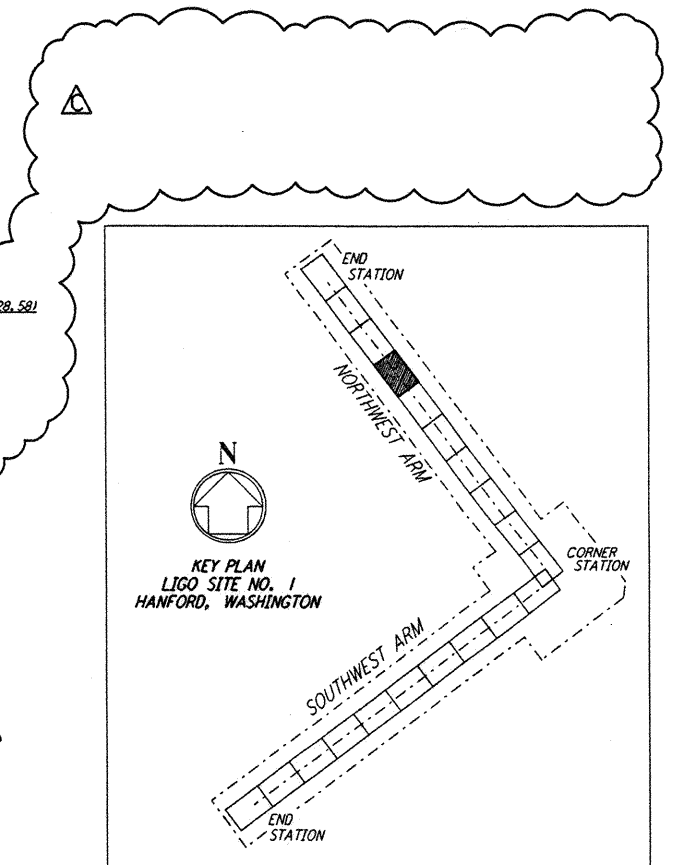
NOTES:
 1. SEE SHEET WA-C-002 FOR GENERAL NOTES, LEGEND AND ABBREVIATIONS.



PROFILE
 SCALES: HORIZ: 1" = 50'
 VERT: 1" = 5'



PLAN
 SCALE: 1" = 50'



This document and the design it covers are the property of PARSONS. They are loaned only with the borrower's expressed written agreement that they will not be reproduced, copied, loaned, exhibited, or used in any other way, except by written consent from PARSONS to the borrower.

NO.	DATE	BY	CHKD	ENGR	PROJ	DESCRIPTION
C	5/22/96	WRB	ML	ML	MDW	BID ADDENDUM #2
B	4/19/96	WRB	ML	ML	MDW	FINAL DESIGN REVIEW & BID
A	10/31/95	WRB	TDM	TDM	MDW	PRELIMINARY DESIGN REVIEW

DESIGNED	WRB
CHECKED	
ENGINEER	
PROJ	

PARSONS
 100 WEST WALNUT STREET
 PASADENA, CALIFORNIA

LIGO
 CALIFORNIA INSTITUTE OF TECHNOLOGY
 MASSACHUSETTS INSTITUTE OF TECHNOLOGY

LASER INTERFEROMETER
 GRAVITATIONAL-WAVE OBSERVATORY
 SITE NO. 1 - HANFORD, WASHINGTON

TITLE: CIVIL NORTHWEST ARM PLAN AND PROFILE STA 84+00 TO STA 98+00

AS NOTED PPI50969 8094

SHEET NUMBER: **WA-C-017**

LIGO-D960208-C-0

LIGOWAF3.BOR