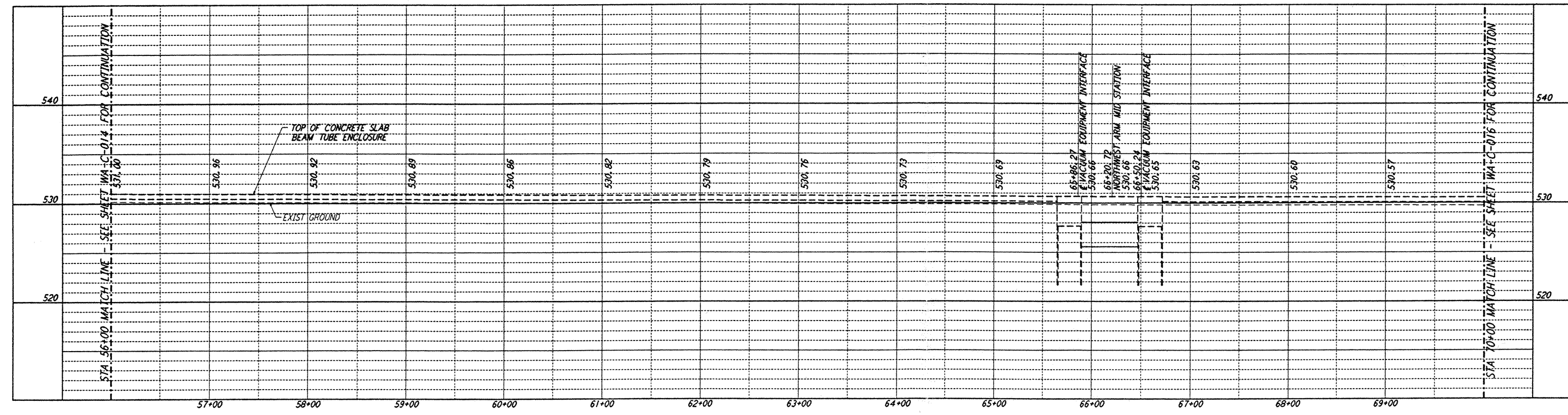
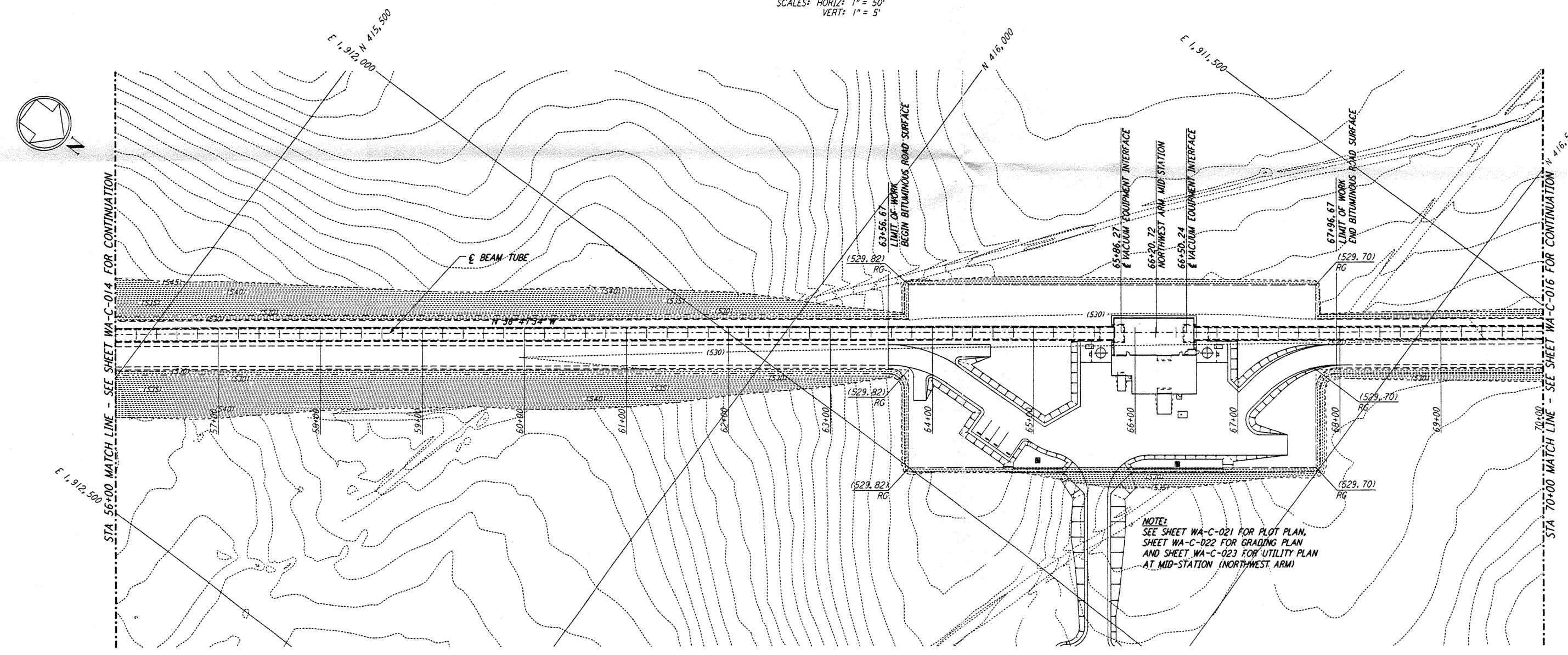


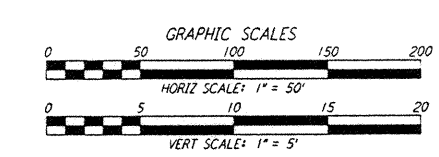
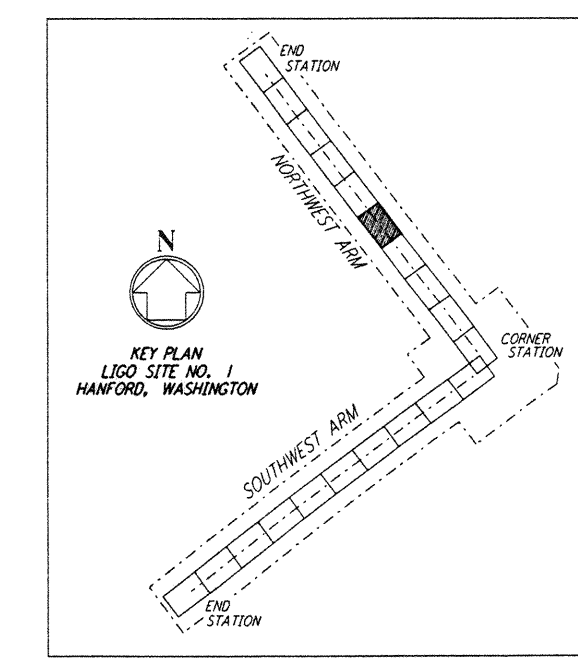
NOTES:  
 1. SEE SHEET WA-C-002 FOR GENERAL NOTES, LEGEND AND ABBREVIATIONS.



PROFILE  
 SCALES: HORIZ: 1" = 50'  
 VERT: 1" = 5'



PLAN  
 SCALE: 1" = 50'

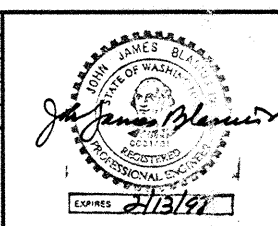


This document and the design it covers are the property of PARSONS. They are loaned only with the borrower's expressed written agreement that they will not be reproduced, copied, loaned, exhibited, or used in any other way, except by written consent from PARSONS to the borrower.

This document and the design it covers are the property of PARSONS. They are loaned only with the borrower's expressed written agreement that they will not be reproduced, copied, loaned, exhibited, or used in any other way, except by written consent from PARSONS to the borrower.

NO.	DATE	BY	CHKD	ENGR	PROJ	DESCRIPTION

FOR CONSTRUCTION	
DRAWN	WRB 9/28/95
CHECKED	
ENGINEER	
PROJ	



LASER INTERFEROMETER GRAVITATIONAL-WAVE OBSERVATORY SITE NO. 1 - HANFORD, WASHINGTON			
TITLE	SCALE	CONTRACT NUMBER	PROJECT NUMBER
CIVIL NORTHWEST ARM PLAN AND PROFILE STA 56+00 TO STA 70+00	AS NOTED	PP150969	8094
SHEET NUMBER		REVISION	
WA-C-015			

LIGO-D960206-00-0

LIGOWAF3.BOR