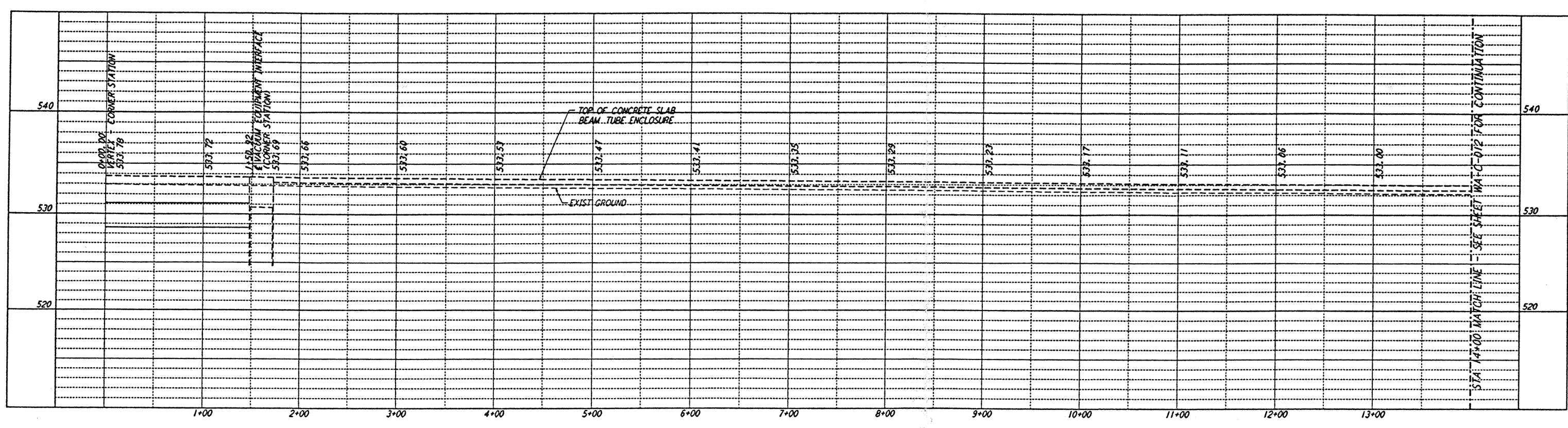


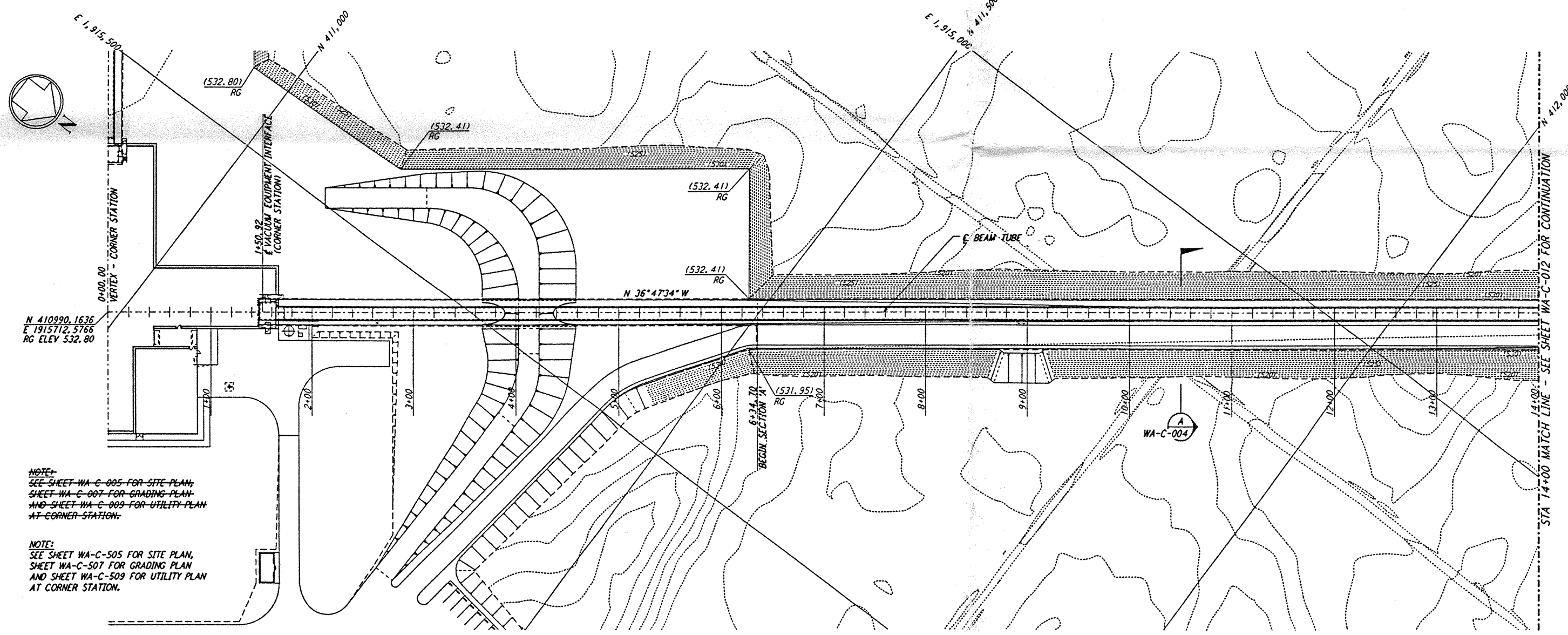
not be reproduced, copied, loaned, exhibited, or used in any other way, except by written consent from PARSONS to the borrower.

This document and the design it covers are the property of PARSONS. They are loaned only with the borrower's expressed written agreement that they will

JOB NO. WA-C-011 DATE: 04/09/98 DRAWN BY: WRB CHECKED BY: TDM ENGR: TDM PROJ: WA-C-011



PROFILE
 SCALES: HORIZ: 1" = 50'
 VERT: 1" = 5'

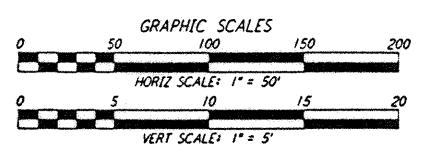
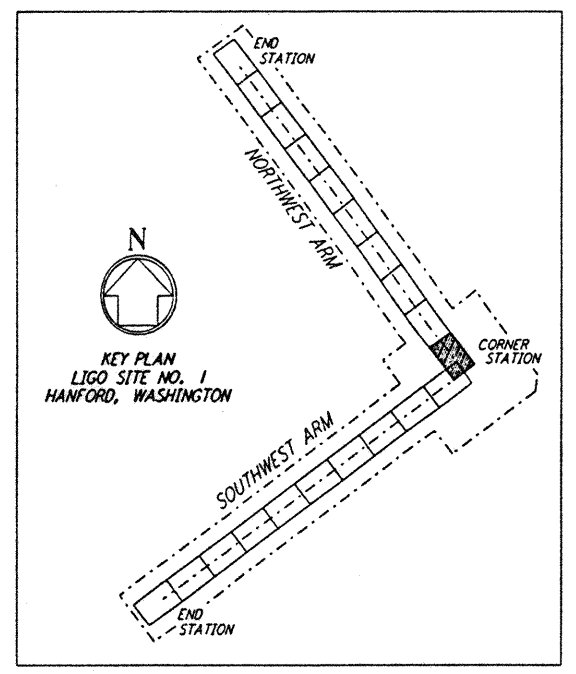


PLAN
 SCALE: 1" = 50'

NOTE:
 SEE SHEET WA-C-005 FOR SITE PLAN,
 SHEET WA-C-007 FOR GRADING PLAN,
 AND SHEET WA-C-009 FOR UTILITY PLAN
 AT CORNER STATION.

NOTE:
 SEE SHEET WA-C-505 FOR SITE PLAN,
 SHEET WA-C-507 FOR GRADING PLAN
 AND SHEET WA-C-509 FOR UTILITY PLAN
 AT CORNER STATION.

NOTES:
 1. SEE SHEET WA-C-002 FOR GENERAL NOTES, LEGEND AND ABBREVIATIONS.



NO.	DATE	BY	CHKD	ENGR	PROJ	DESCRIPTION
B	4/19/96	WRB	MM	TDM		FINAL DESIGN REVIEW & BID
A	10/31/95	WRB		TDM		PRELIMINARY DESIGN REVIEW

PARSONS
 100 WEST WALNUT STREET
 PASADENA, CALIFORNIA

LIGO
 CALIFORNIA INSTITUTE OF TECHNOLOGY
 MASSACHUSETTS INSTITUTE OF TECHNOLOGY

LASER INTERFEROMETER
 GRAVITATIONAL-WAVE OBSERVATORY
 SITE NO. 1 - HANFORD, WASHINGTON

TITLE: CIVIL NORTHWEST ARM PLAN AND PROFILE STA 0+00 TO STA 14+00

AS NOTED PPI50969 8094
WA-C-011

LIGOD960202-B-11

LIGOWAF3.BDR