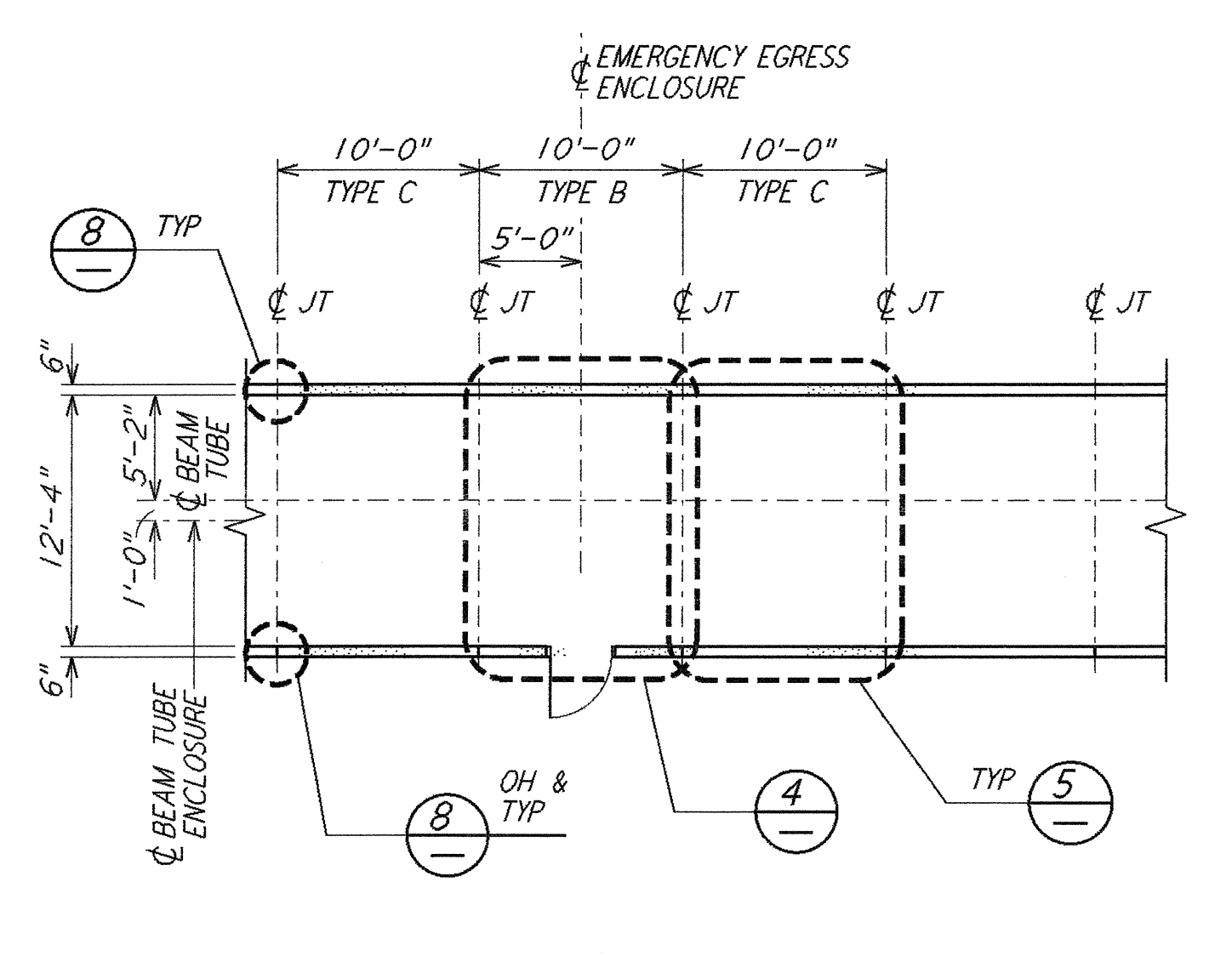
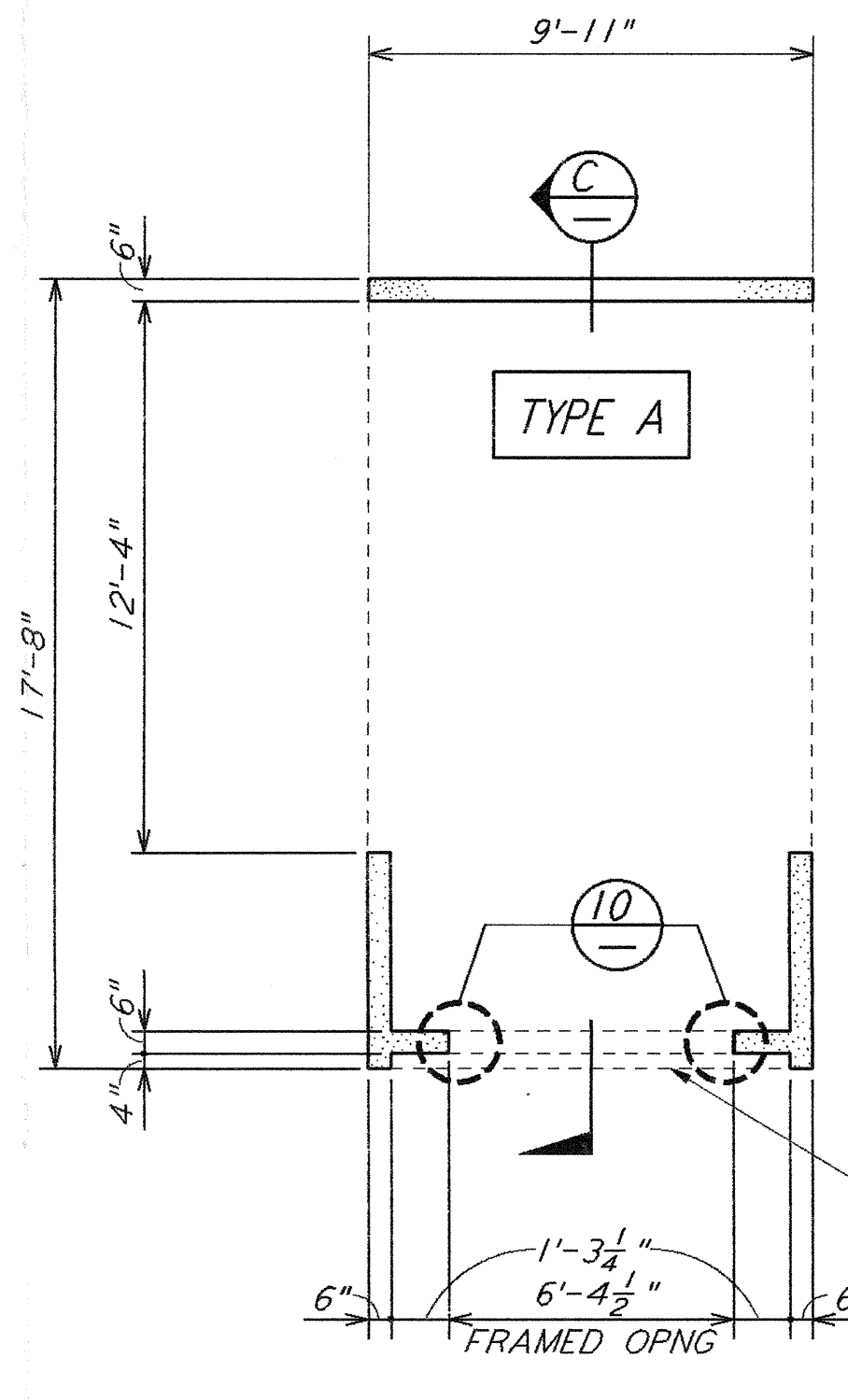


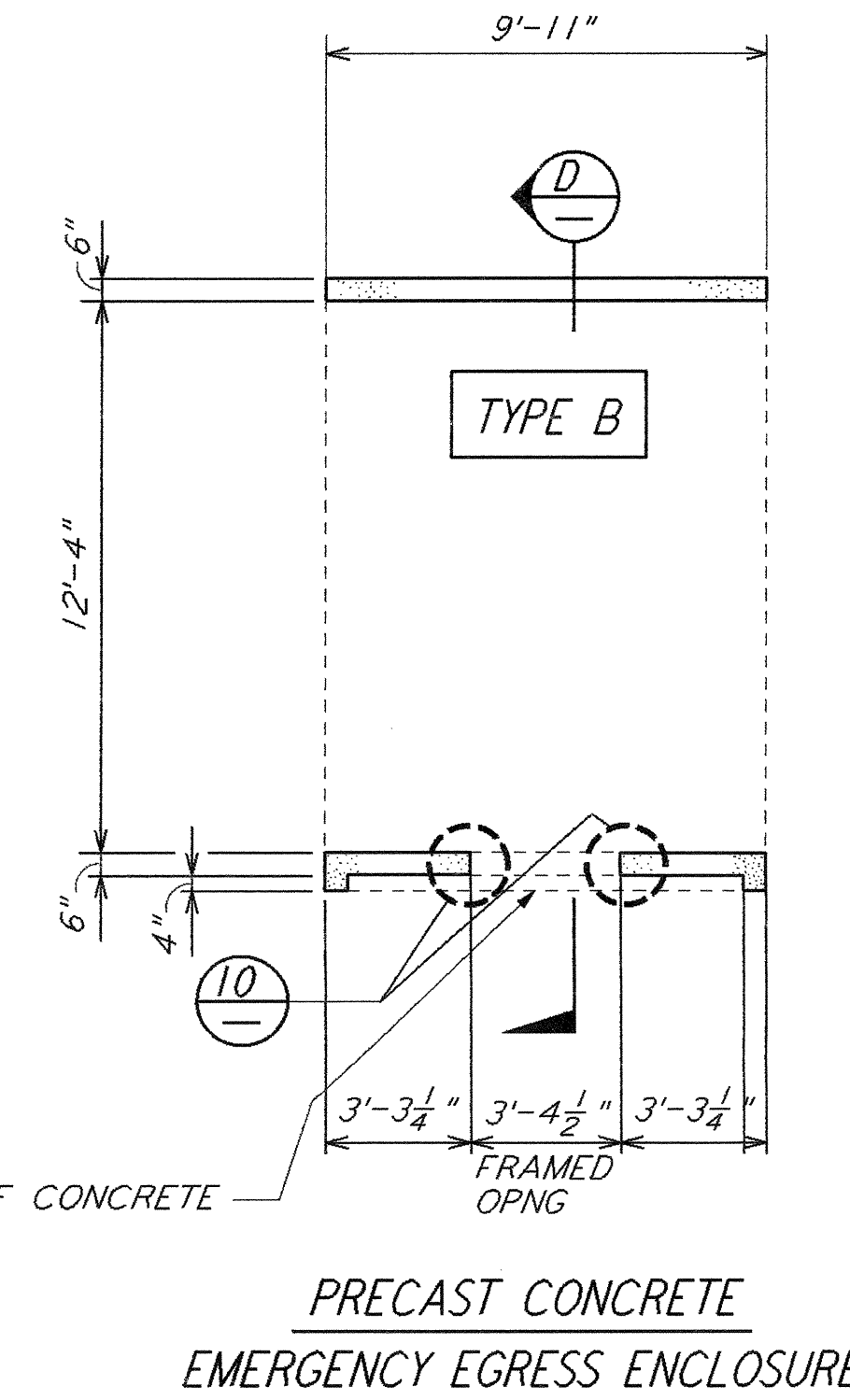
PLAN AT SERVICE ENTRANCE (1) REF  
 1/8" = 1'-0" BT-S-003 BT-S-002



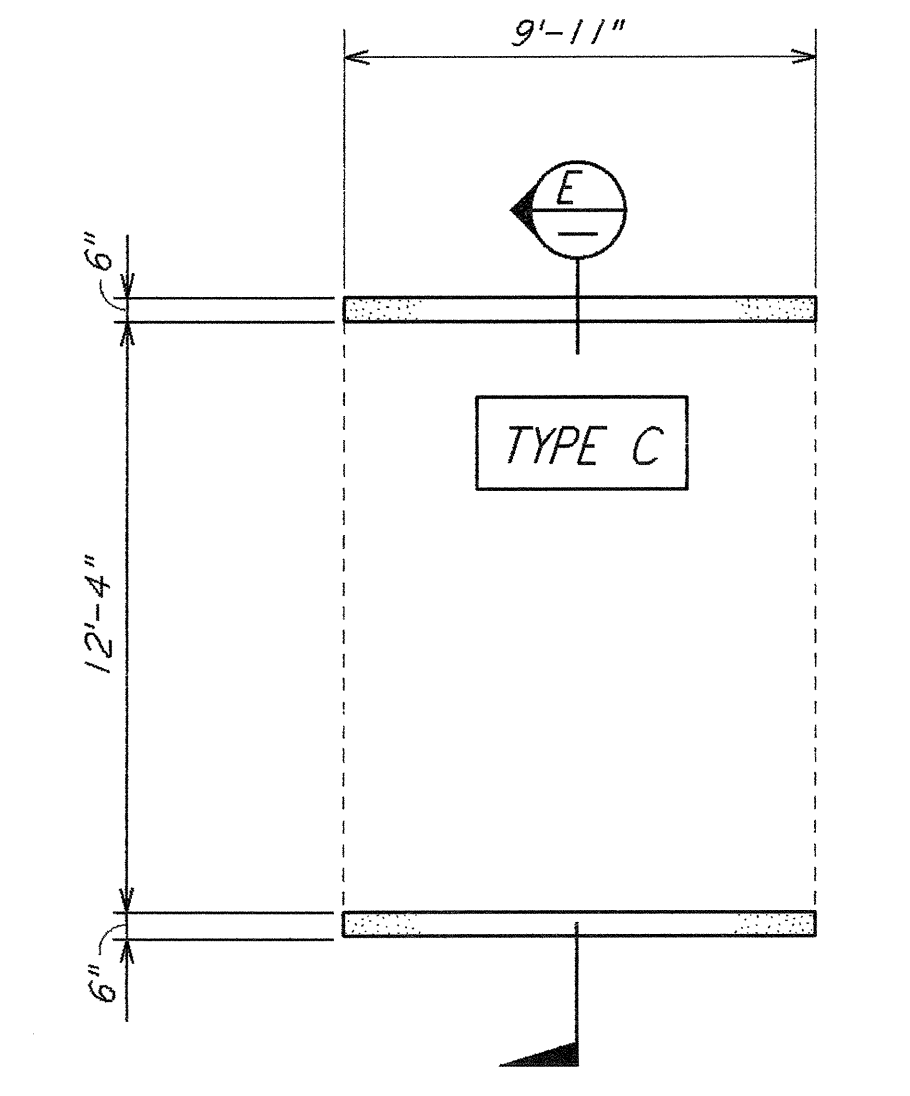
PLAN AT EMERGENCY EGRESS (2) REF  
 1/8" = 1'-0" BT-S-003 BT-S-002



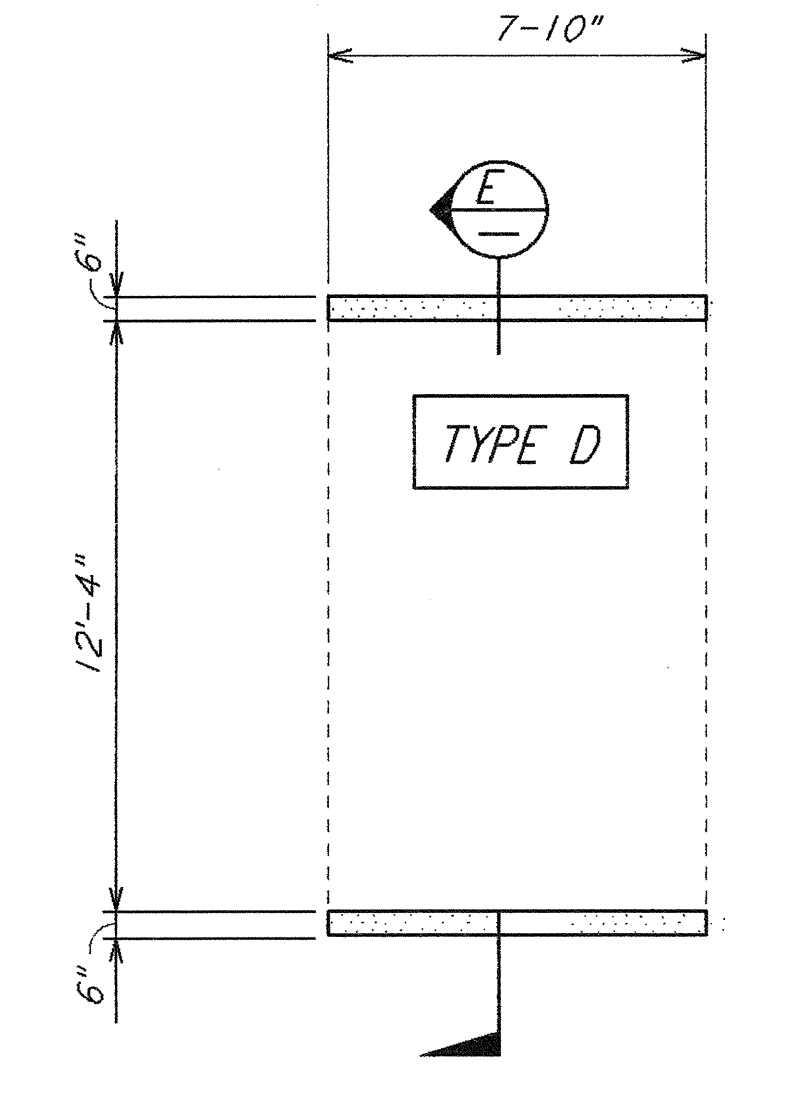
PRECAST CONCRETE SERVICE ENTRANCE ENCLOSURE DETAIL (3)  
 1/4" = 1'-0"



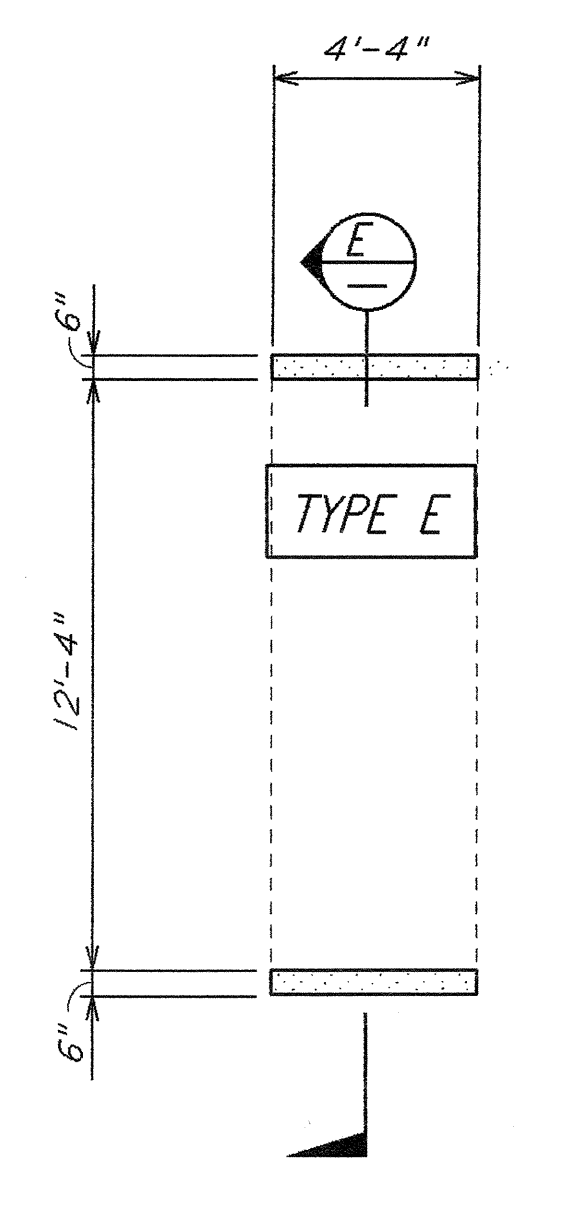
PRECAST CONCRETE EMERGENCY EGRESS ENCLOSURE DETAIL (4)  
 1/4" = 1'-0"



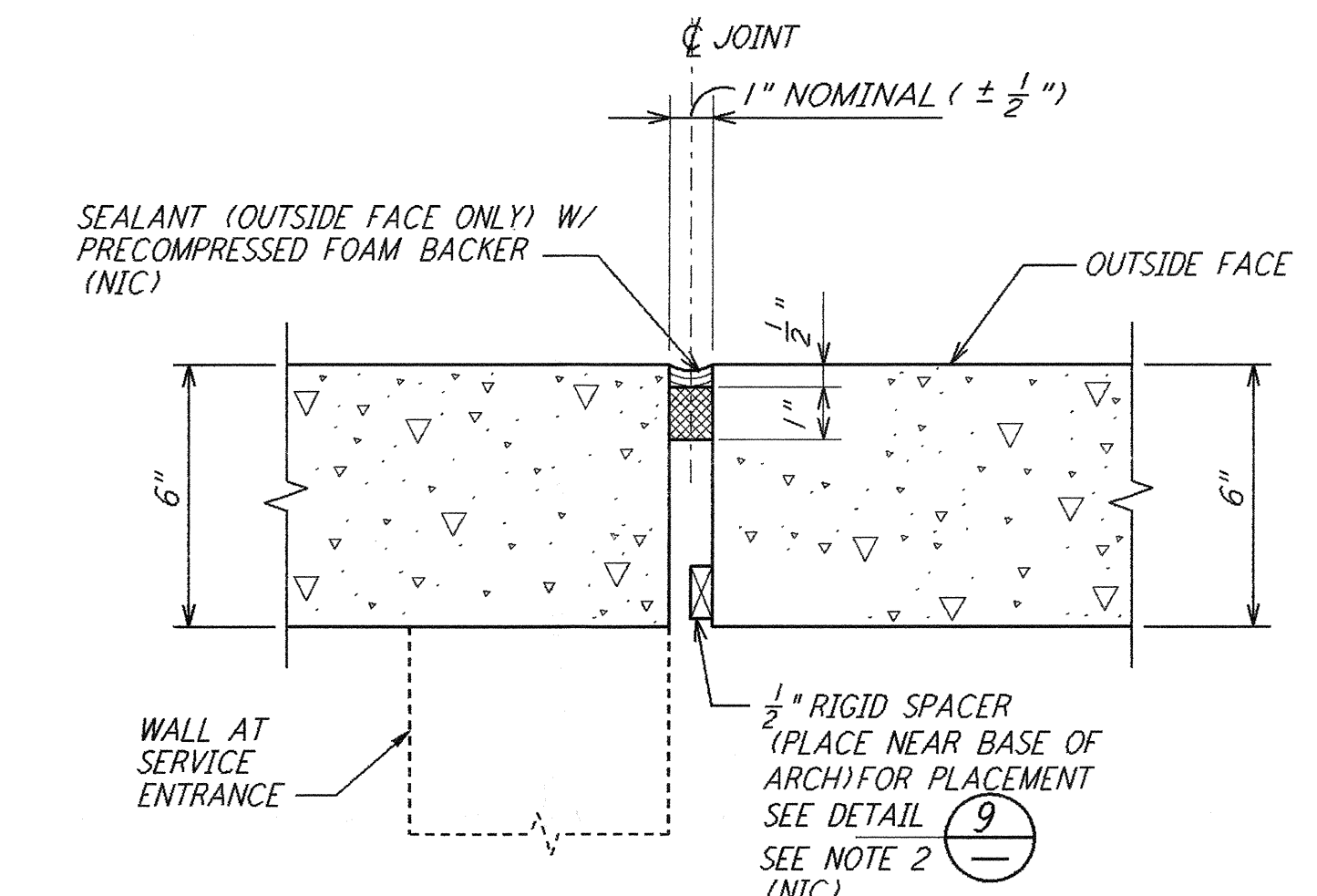
TYPICAL PRECAST CONCRETE ENCLOSURE DETAIL (5)  
 1/4" = 1'-0"



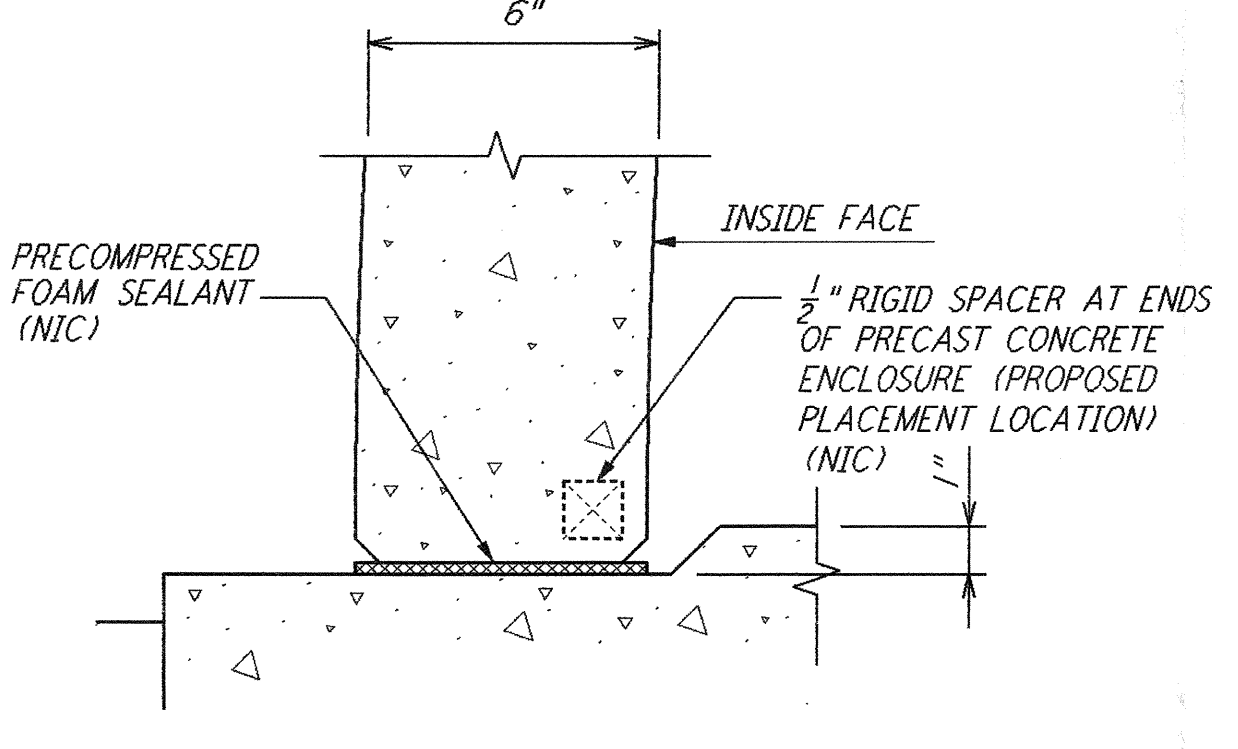
DETAIL (6) REF  
 1/4" = 1'-0" BT-S-003 BT-S-002



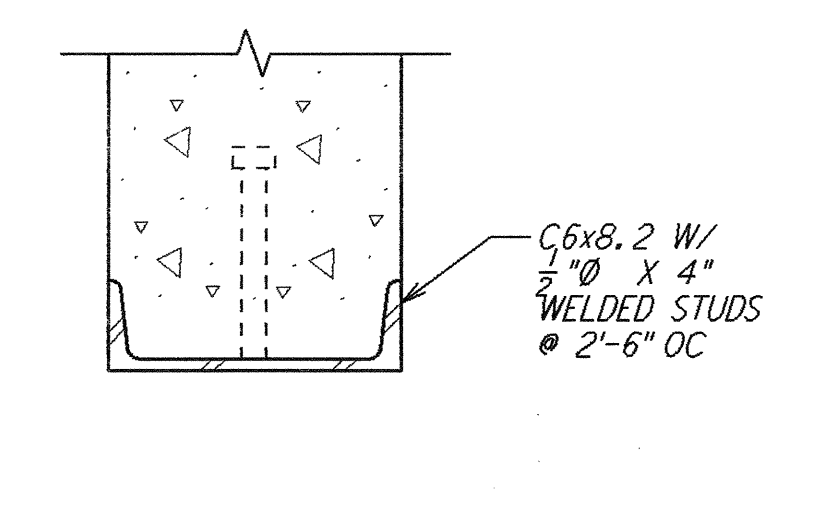
DETAIL (7) REF  
 1/4" = 1'-0" BT-S-003 BT-S-002



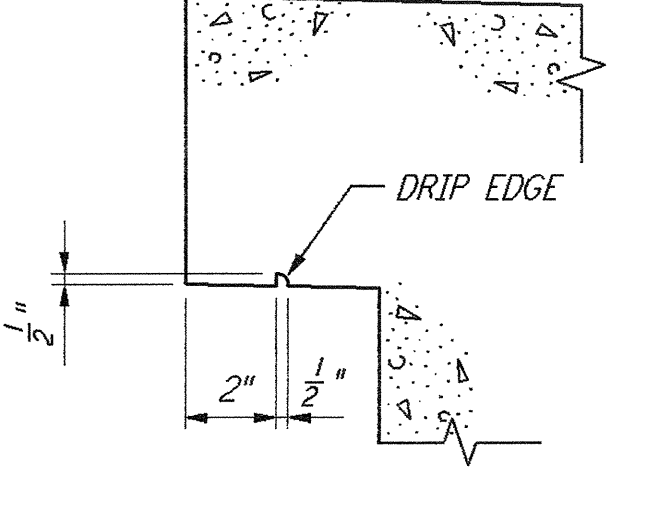
DETAIL (8)  
 3/8" = 1'-0"



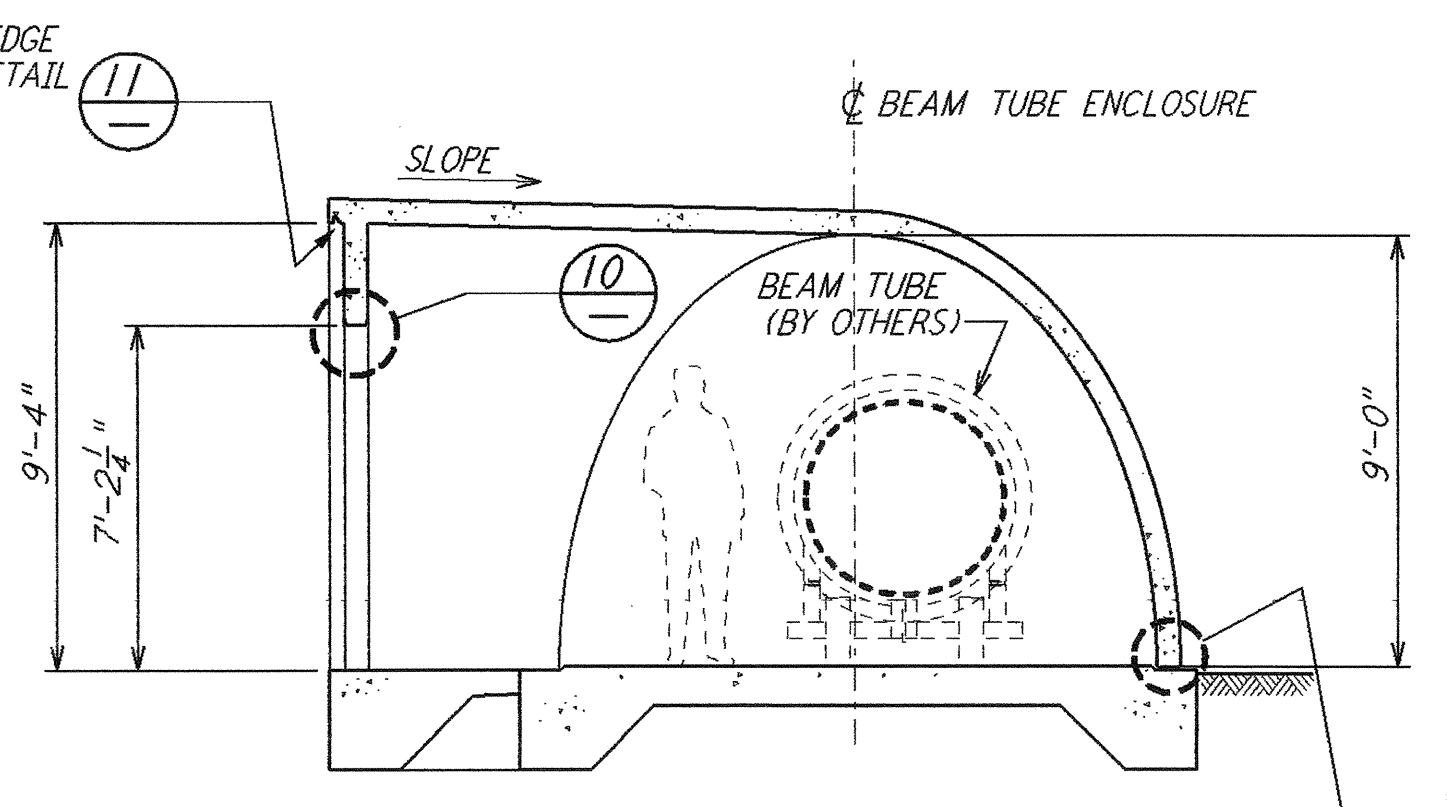
DETAIL (9)  
 3/8" = 1'-0"



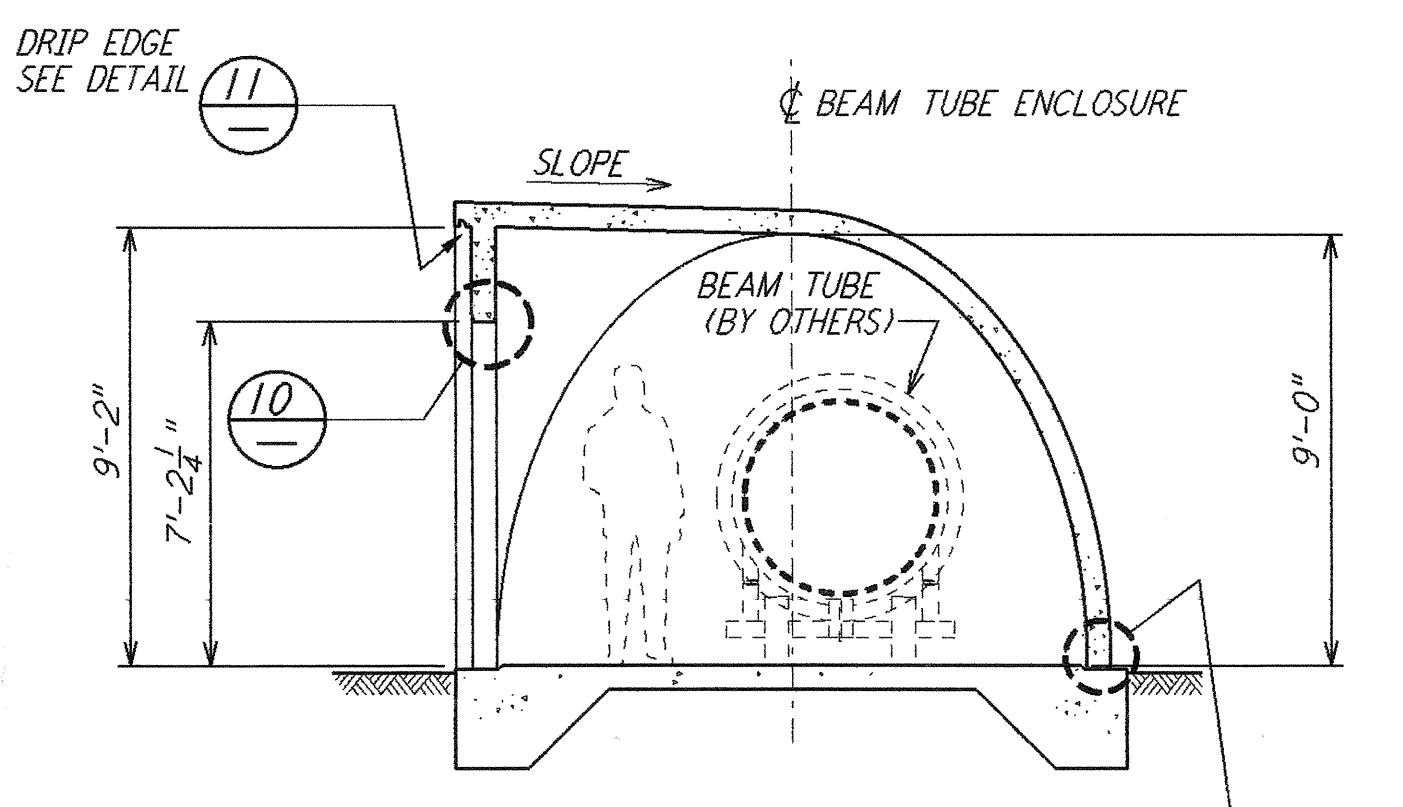
DETAIL (10)  
 3/8" = 1'-0"



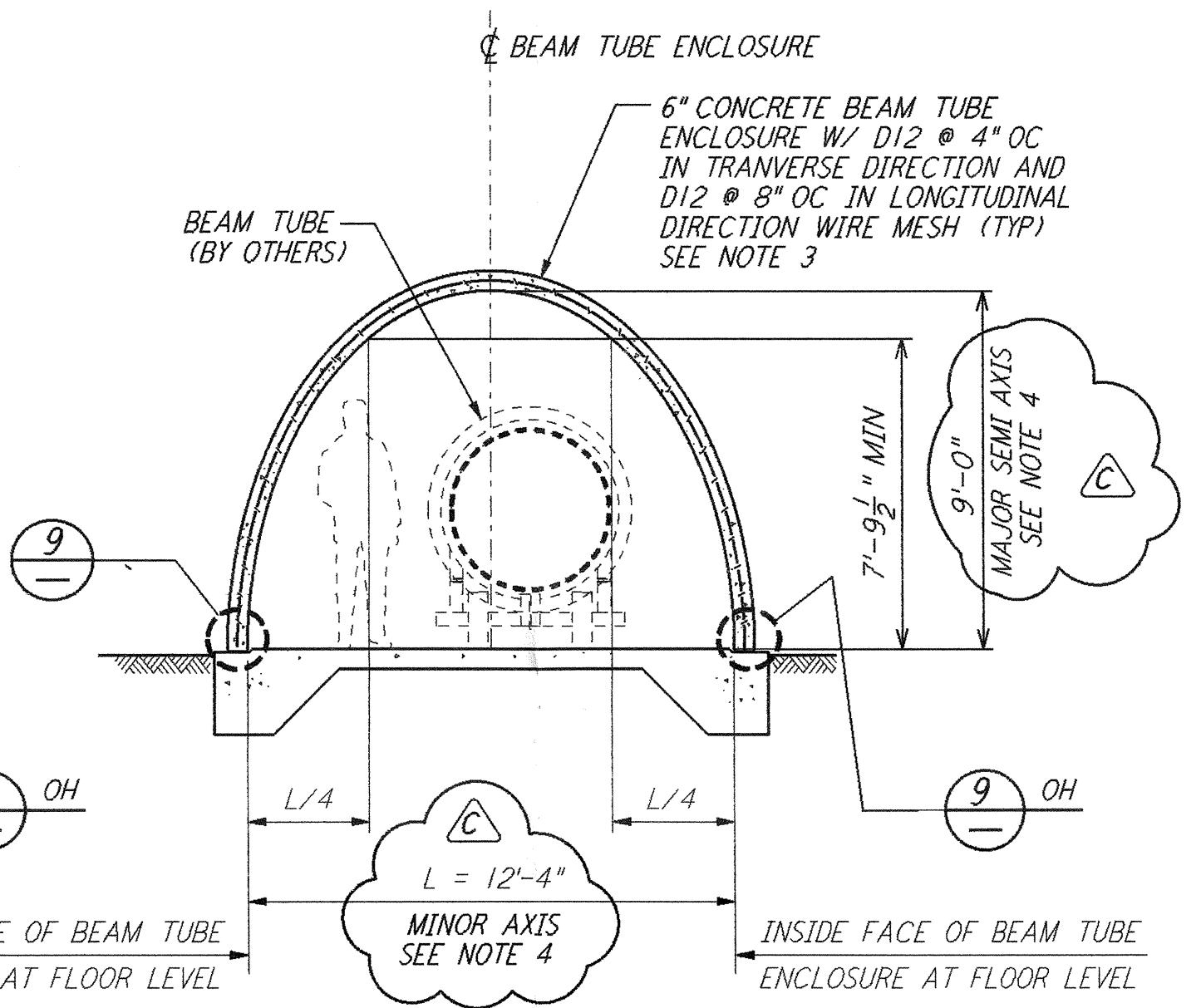
DETAIL (11)  
 3/8" = 1'-0"



SECTION (C)  
 1/4" = 1'-0"

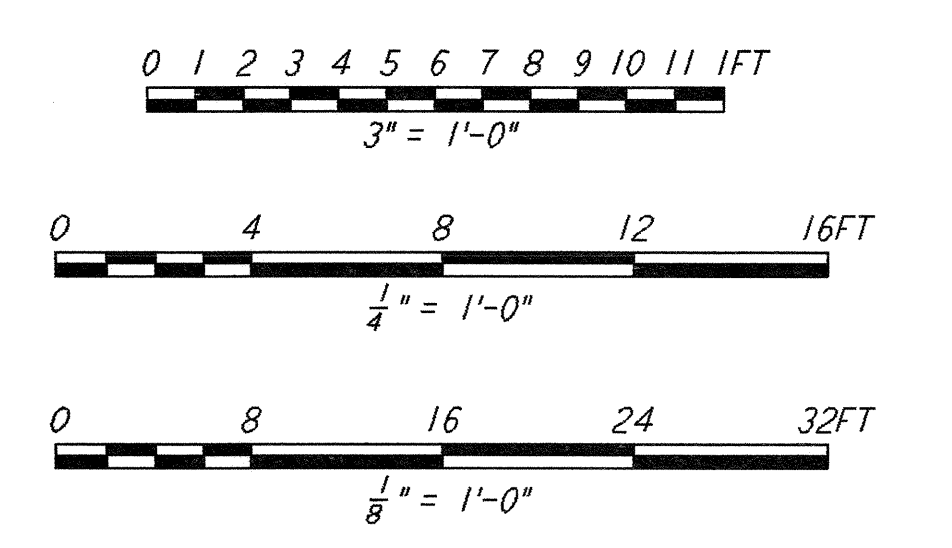


SECTION (D)  
 1/4" = 1'-0"



SECTION (E)  
 1/4" = 1'-0"

- NOTE:**
- FOR GENERAL NOTES, ABBREVIATIONS AND LEGEND SEE DRAWING BT-S-001.
  - SPACERS SHALL BE ELIMINATED WHEN EXPANSION JOINT BETWEEN PRECAST SEGMENTS IS WITHIN 4 FEET FROM THE EXPANSION JOINT IN THE FOUNDATION SLAB.
  - REINFORCEMENT FOR ALL ELEMENTS OF PRECAST CONCRETE ENCLOSURES SHALL BE DESIGNED BY THE CONTRACTOR AND SHALL BE APPROVED BY THE CONSTRUCTION MANAGER. REINFORCEMENT SHOWN IS FOR BID PURPOSE ONLY.
  - DIMENSIONS ARE FOR A SEMI-ELLIPTICAL CROSS SECTION. CONTRACTOR MAY SLIGHTLY DEVIATE FROM THIS SHAPE PROVIDED ALL SHOWN DIMENSIONS AND CLEARANCES ARE SATISFIED.



D960189-C-0

NO.	DATE	BY	CHKD	ENGR	PROJ	DESCRIPTION
C	12-18-95	MCS				BID AMENDMENT 1
B	11-21-95	MCS	RM	FJD	MDW	ISSUED FOR BID
A	10-03-95	MCS	RM	FJD	MDW	DRAFT FINAL DESIGN REPORT

DRAWN	SH
CHECKED	
ENGINEER	
PROJ	

**PARSONS**  
 100 WEST WALNUT STREET  
 PASADENA, CALIFORNIA

**LIGO**  
 CALIFORNIA INSTITUTE OF TECHNOLOGY  
 MASSACHUSETTS INSTITUTE OF TECHNOLOGY

LASER INTERFEROMETER  
 GRAVITATIONAL-WAVE OBSERVATORY  
**BTE SITWORK & FABRICATION - HANFORD, WA**

**BEAM TUBE ENCLOSURE PLANS, SECTIONS & DETAILS**

AS NOTED PP150969 8094  
**BT-S-003**