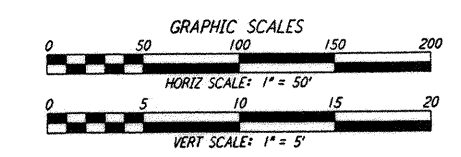
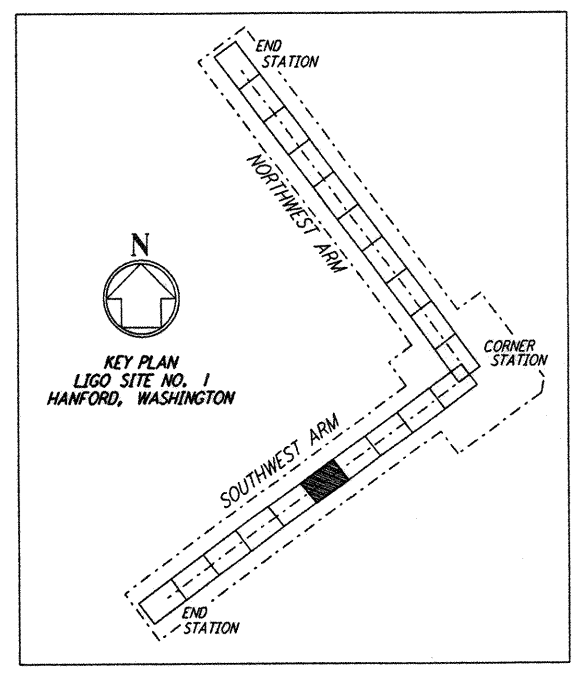
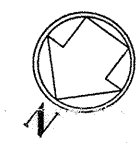
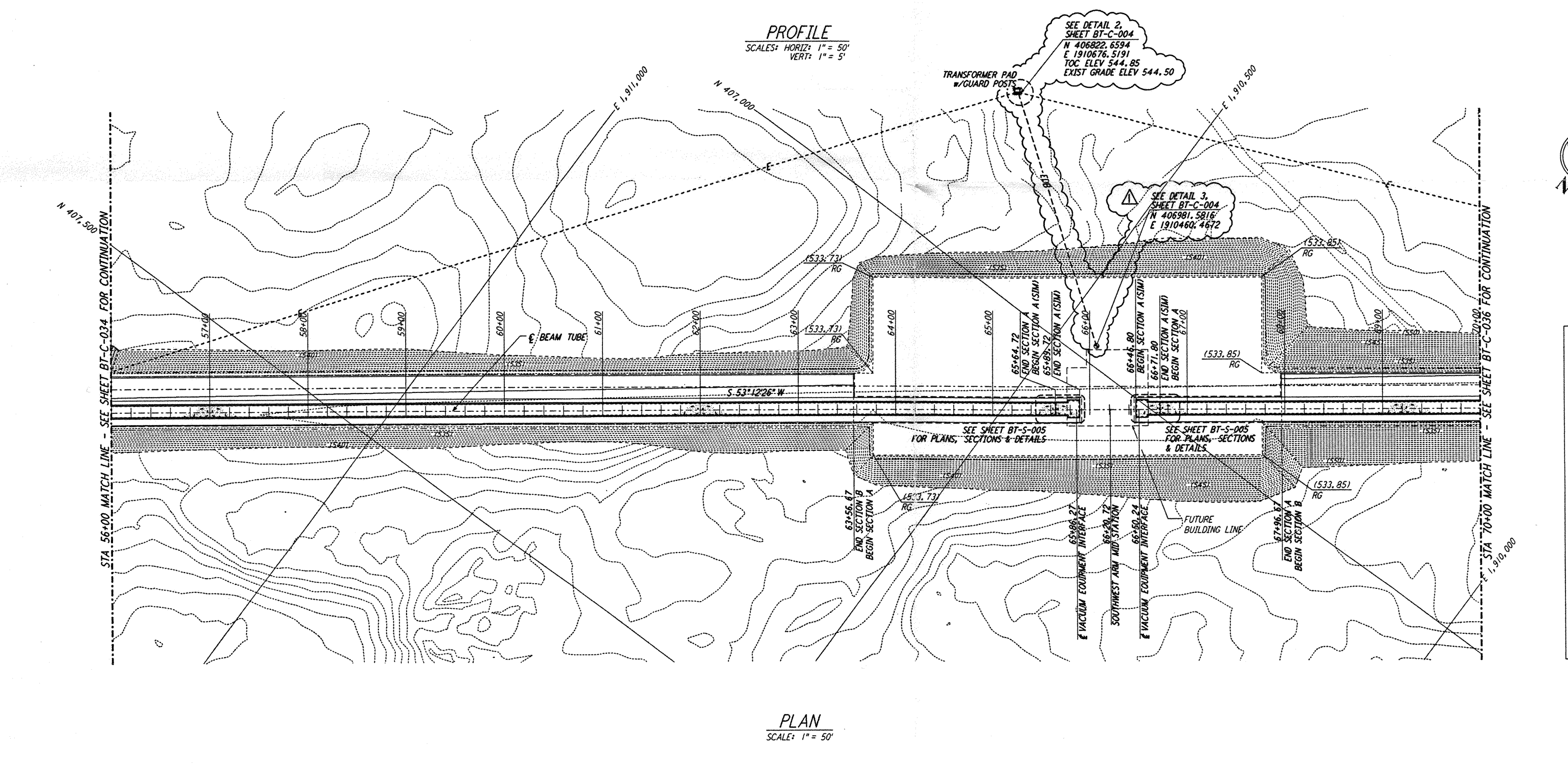


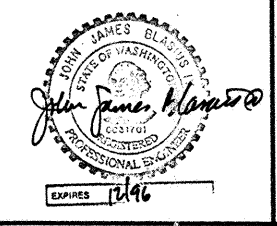
- NOTES:**
- SEE SHEET BT-C-002 FOR GENERAL NOTES, LEGEND AND ABBREVIATIONS.
 - SEE SHEET BT-C-004 FOR TYPICAL SECTIONS AND DETAILS.



This document and the design it covers are the property of PARSONS. They are loaned only with the borrower's expressed written agreement that they will not be reproduced, copied, loaned, exhibited, or used in any other way, except by written consent from PARSONS to the borrower.

NO.	DATE	BY	CHKD	ENGR	PROJ	DESCRIPTION
1	2-29-96	WRB	WRB	WRB	WRB	CHANGE ORDER NO. 2

ISSUED FOR CONSTRUCTION	DATE
DRAWN	1-19-96
CHECKED	1-19-96
ENGINEER	1-19-96
PROJ	1-19-96



PARSONS
 100 WEST WALNUT STREET
 PASADENA, CALIFORNIA

LIGO
 CALIFORNIA INSTITUTE OF TECHNOLOGY
 MASSACHUSETTS INSTITUTE OF TECHNOLOGY

LASER INTERFEROMETER
 GRAVITATIONAL-WAVE OBSERVATORY
 BTE SITework & FABRICATION - HANFORD, WA

TITLE: CIVIL SOUTHWEST ARM PLAN AND PROFILE
 STA 56+00 TO STA 70+00

AS NOTED PP150969 8094
BT-C-035