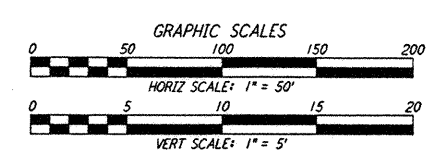
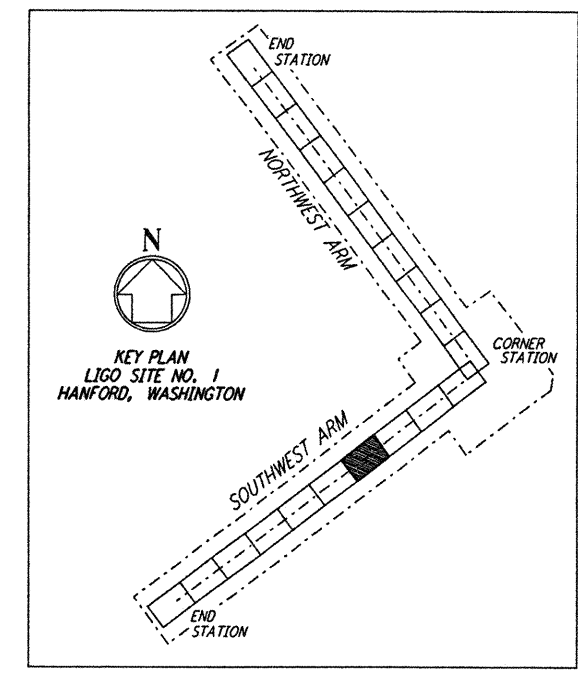
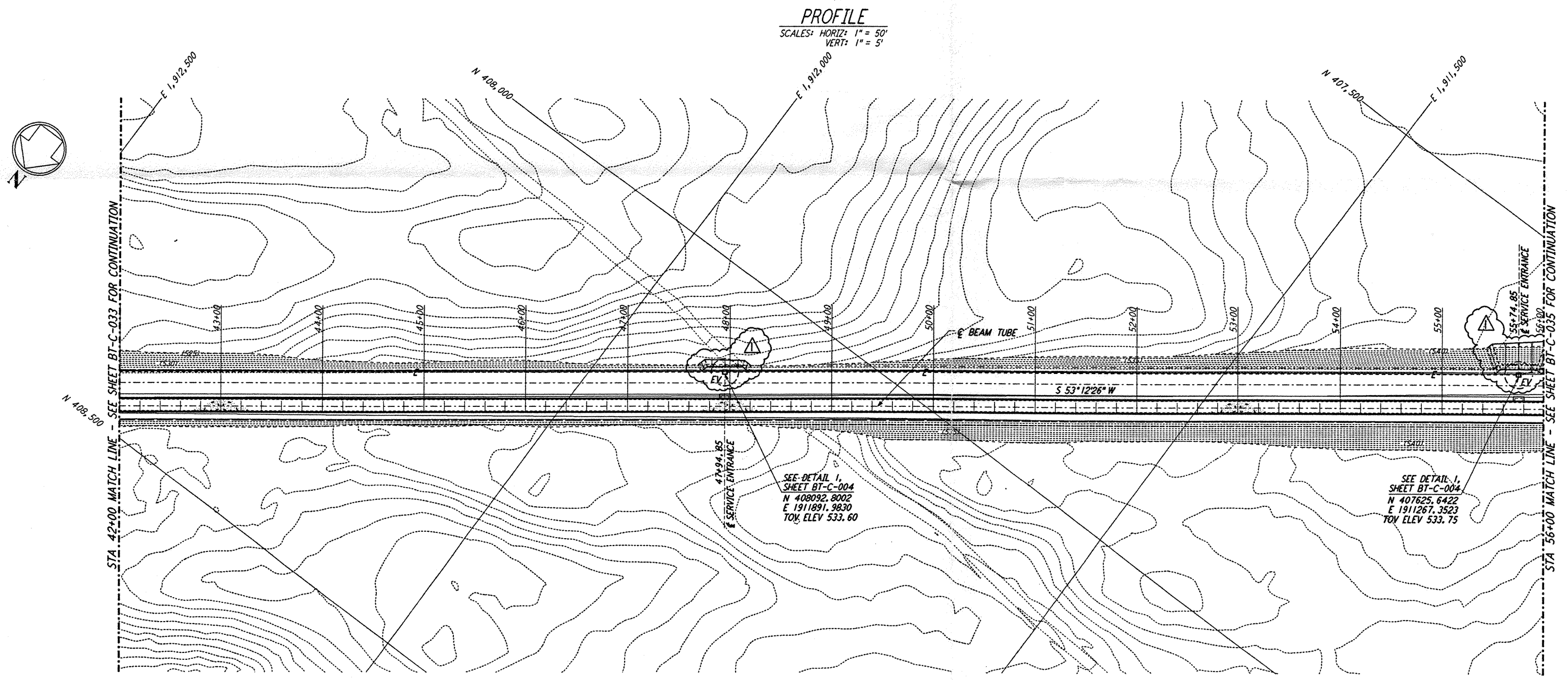
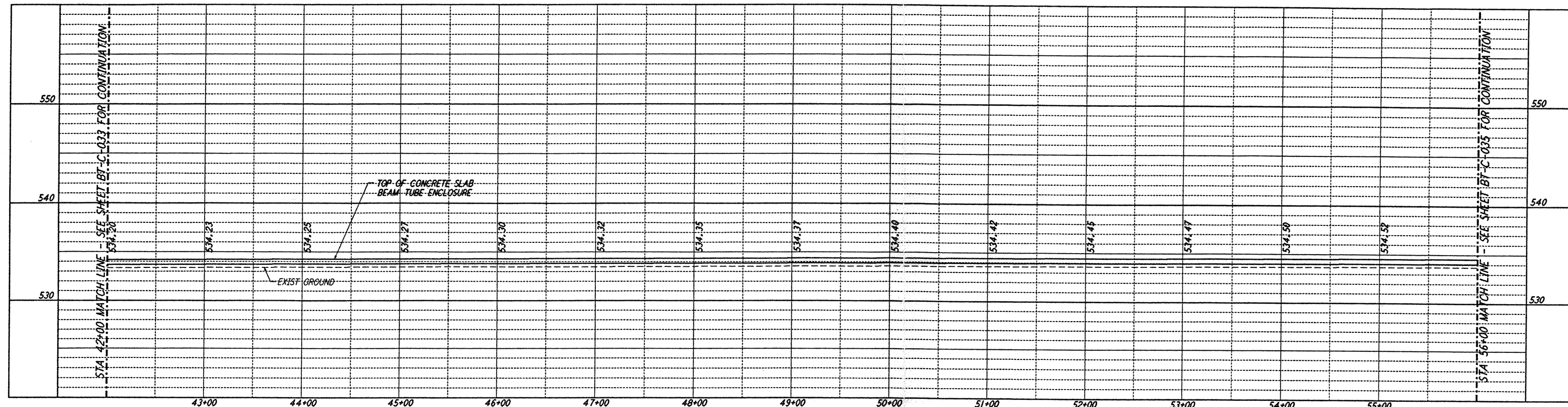


- NOTES:**
- SEE SHEET BT-C-002 FOR GENERAL NOTES, LEGEND AND ABBREVIATIONS.
  - SEE SHEET BT-C-004 FOR TYPICAL SECTIONS AND DETAILS.

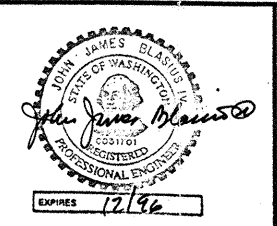


This document and the design it covers are the property of PARSONS. They are loaned only with the borrower's expressed written agreement that they will not be reproduced, copied, loaned, exhibited, or used in any other way, except by written consent from PARSONS to the borrower.

This document and the design it covers are the property of PARSONS. They are loaned only with the borrower's expressed written agreement that they will not be reproduced, copied, loaned, exhibited, or used in any other way, except by written consent from PARSONS to the borrower.

NO.	DATE	BY	CHKD	ENGR	PROJ	DESCRIPTION
1	2-29-96	WRB				CHANGE ORDER NO. 2

ISSUED FOR CONSTRUCTION	
DRAWN	WRB 1-19-96
CHECKED	MP 1-19-96
ENGINEER	JB 1-19-96
PROJ	MDW 1-19-96



**PARSONS**  
 100 WEST WALNUT STREET  
 PASADENA, CALIFORNIA

**LIGO**  
 CALIFORNIA INSTITUTE OF TECHNOLOGY  
 MASSACHUSETTS INSTITUTE OF TECHNOLOGY

LASER INTERFEROMETER  
 GRAVITATIONAL-WAVE OBSERVATORY  
 BTE SITework & FABRICATION - HANFORD, WA

TITLE	CIVIL SOUTHWEST ARM PLAN AND PROFILE STA 42+00 TO STA 56+00	SCALE	AS NOTED	CONTRACT NUMBER	PPI50969	PROJECT NUMBER	8094
		SHEET NUMBER					<b>BT-C-034</b>