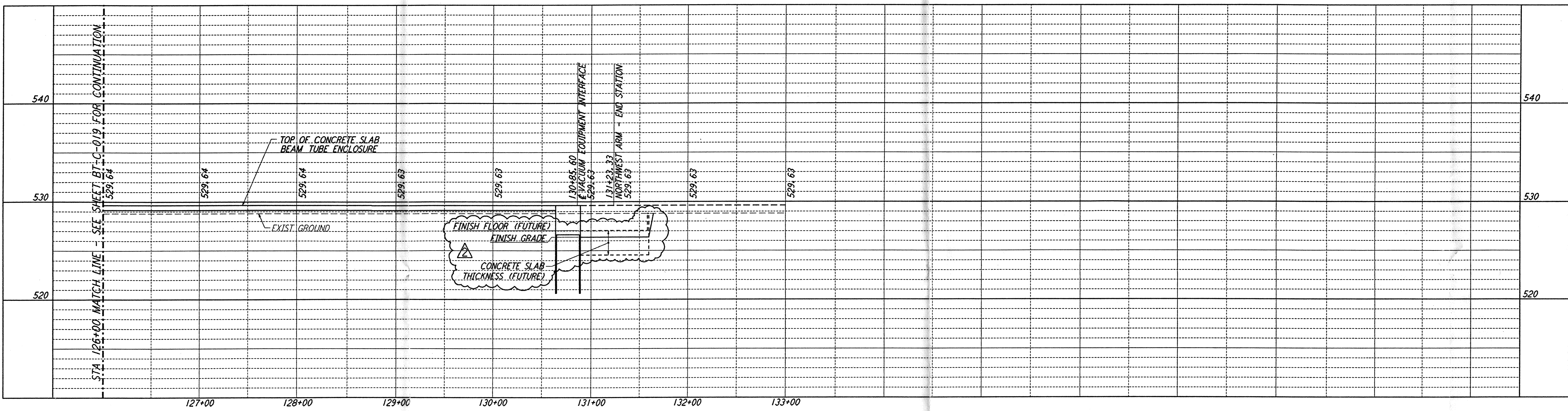
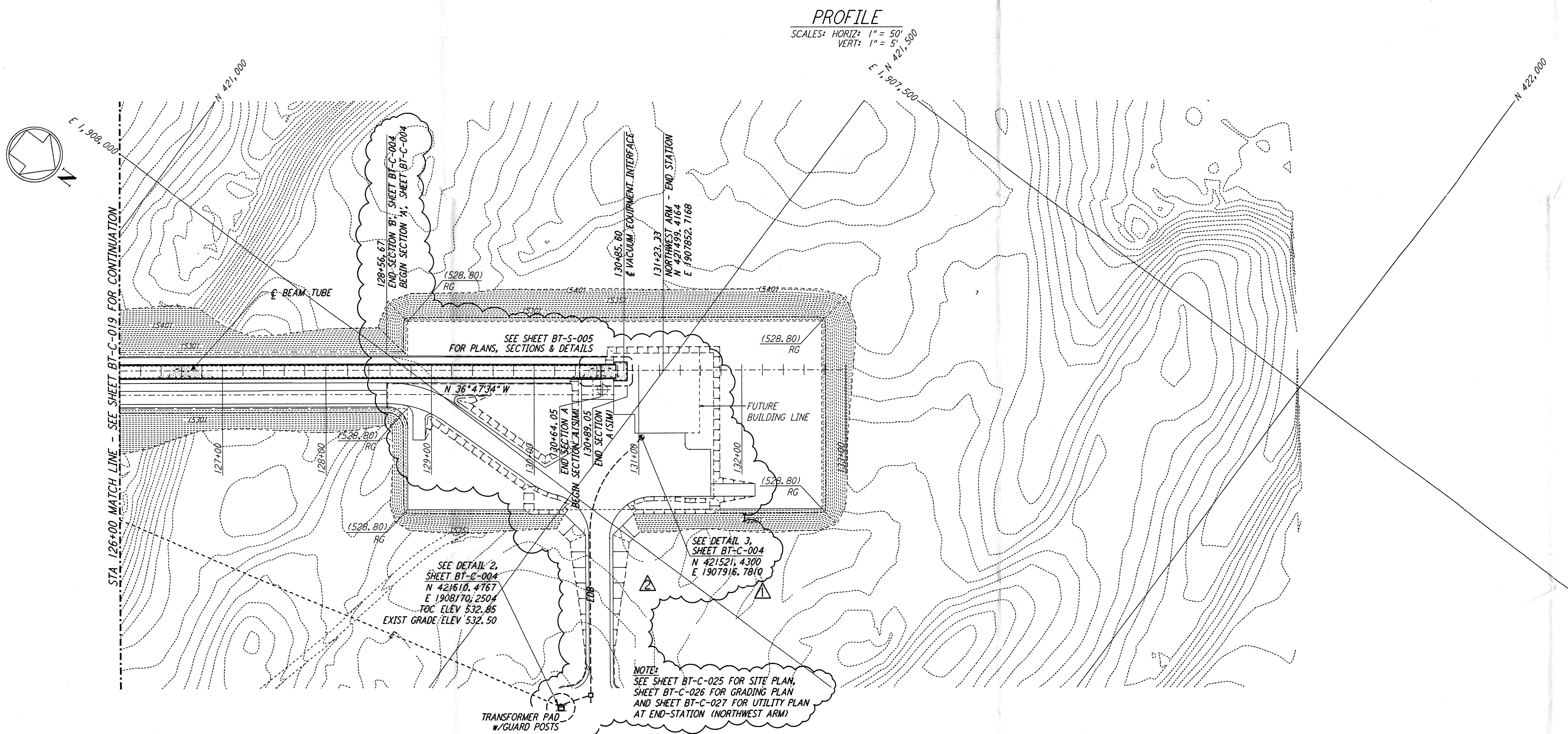


This document and the design it covers are the property of **PARSONS**. They are loaned only with the borrower's expressed written agreement that they will not be reproduced, copied, loaned, exhibited, or used in any other way, except by written consent from **PARSONS** to the borrower.

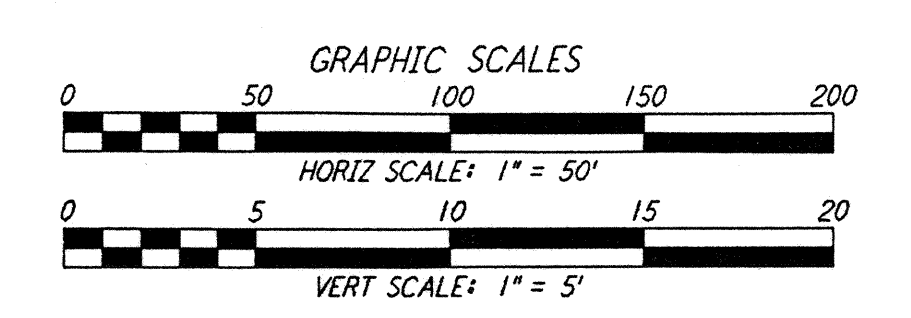
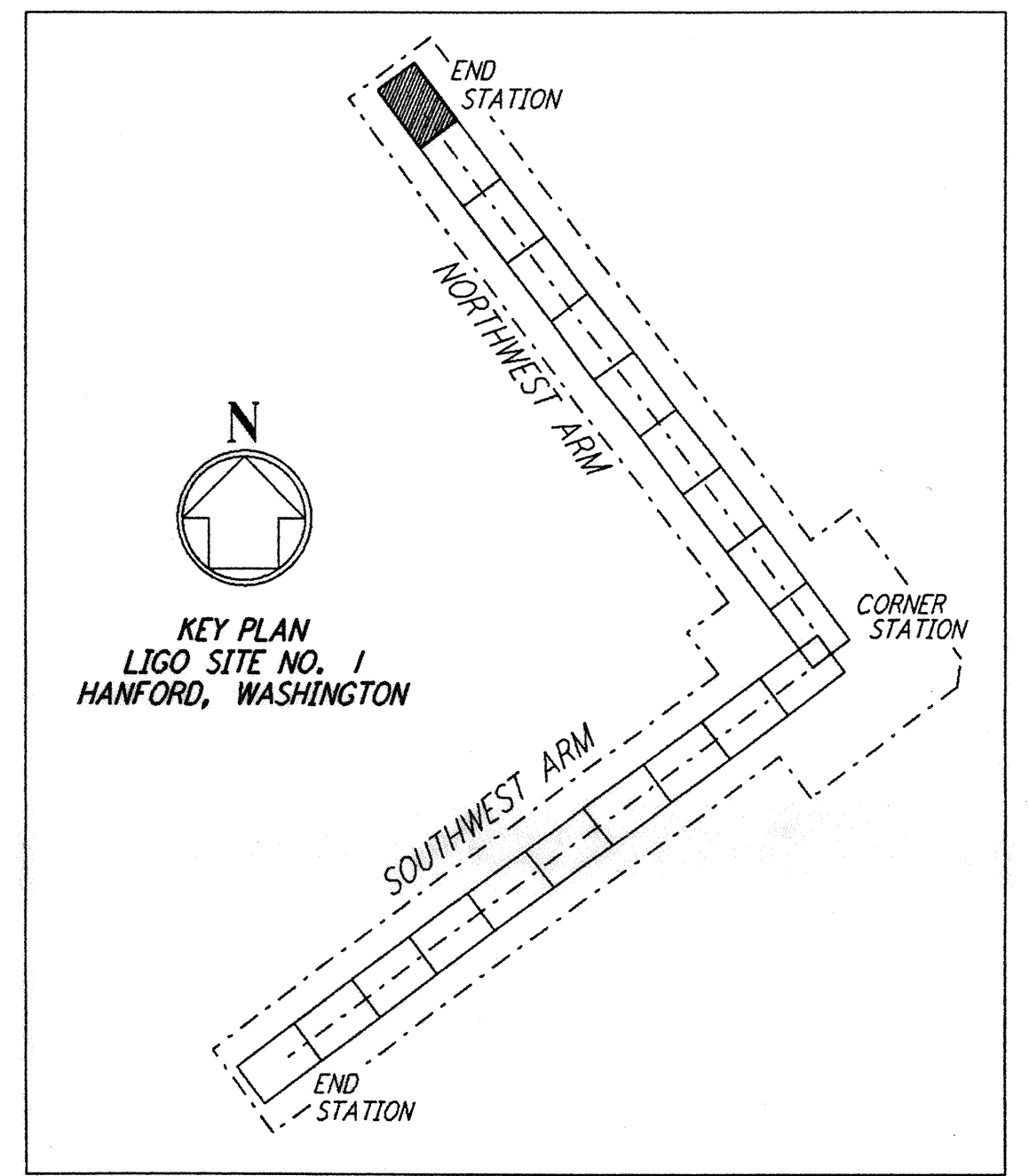


- NOTES:**
- SEE SHEET BT-C-002 FOR GENERAL NOTES, LEGEND AND ABBREVIATIONS.
 - SEE SHEET BT-C-004 FOR TYPICAL SECTIONS AND DETAILS.



PROFILE
 SCALES: HORIZ: 1" = 50'
 VERT: 1" = 5'

PLAN
 SCALE: 1" = 50'



NO.	DATE	BY	CHKD	ENGR	PROJ	DESCRIPTION
1	2-29-96	WRB	TDM	JB	MDW	CHANGE ORDER NO. 2
2	4-19-96	WRB	TDM	MDW		CHANGE ORDER NO. 4

ISSUED FOR CONSTRUCTION	
DRAWN	WRB 1-19-96
CHECKED	MP 1-19-96
ENGINEER	JB 1-19-96
PROJ	MDW 1-19-96



100 WEST WALNUT STREET
 PASADENA, CALIFORNIA



CALIFORNIA INSTITUTE OF TECHNOLOGY
 MASSACHUSETTS INSTITUTE OF TECHNOLOGY

LASER INTERFEROMETER
 GRAVITATIONAL-WAVE OBSERVATORY
 BTE SITWORK & FABRICATION - HANFORD, WA

TITLE	SCALE	CONTRACT NUMBER	PROJECT NUMBER
CIVIL NORTHWEST ARM PLAN AND PROFILE	AS NOTED	PP150969	8094
STA 126+00 TO STA 133+00	SHEET NUMBER	BT-C-020	