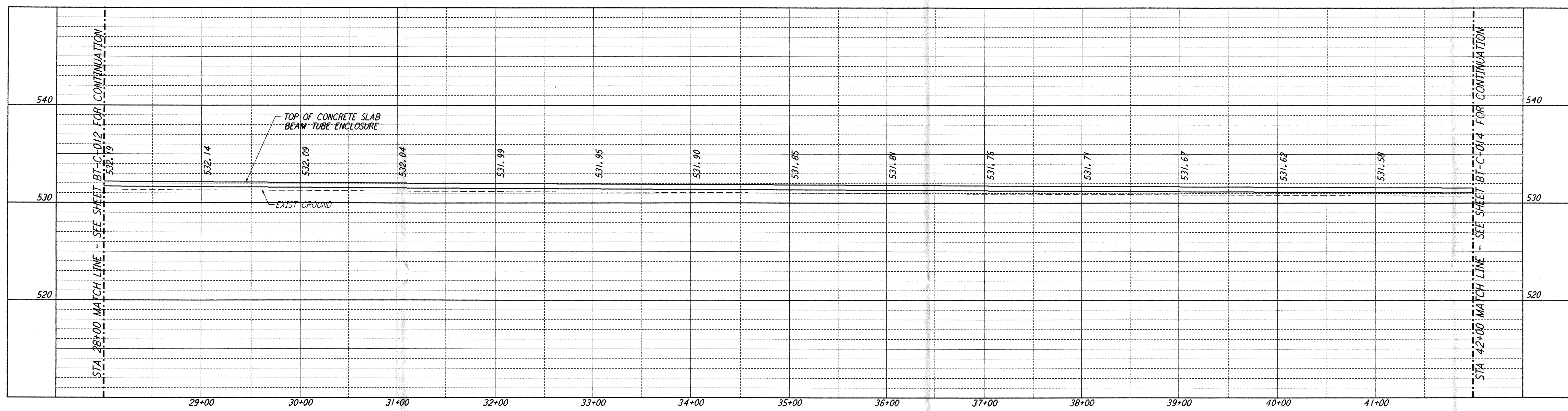
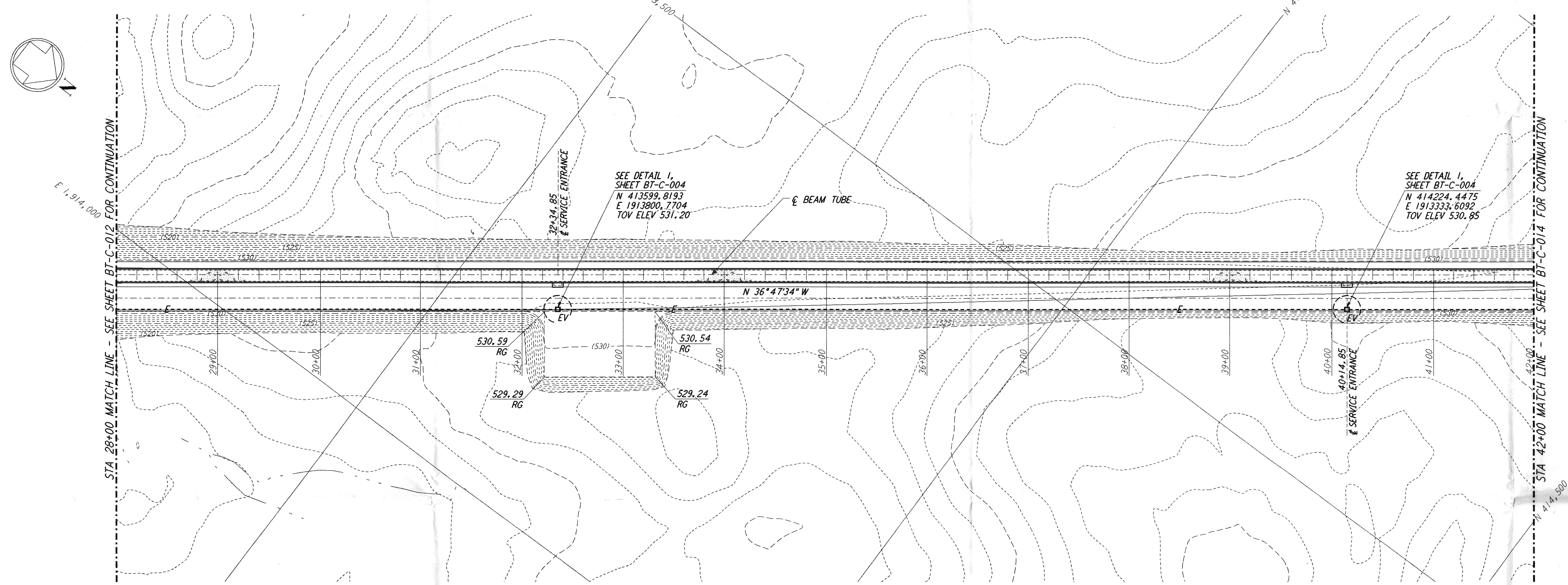


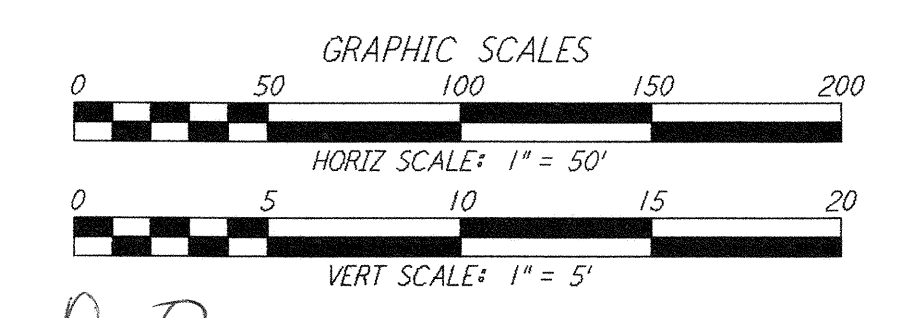
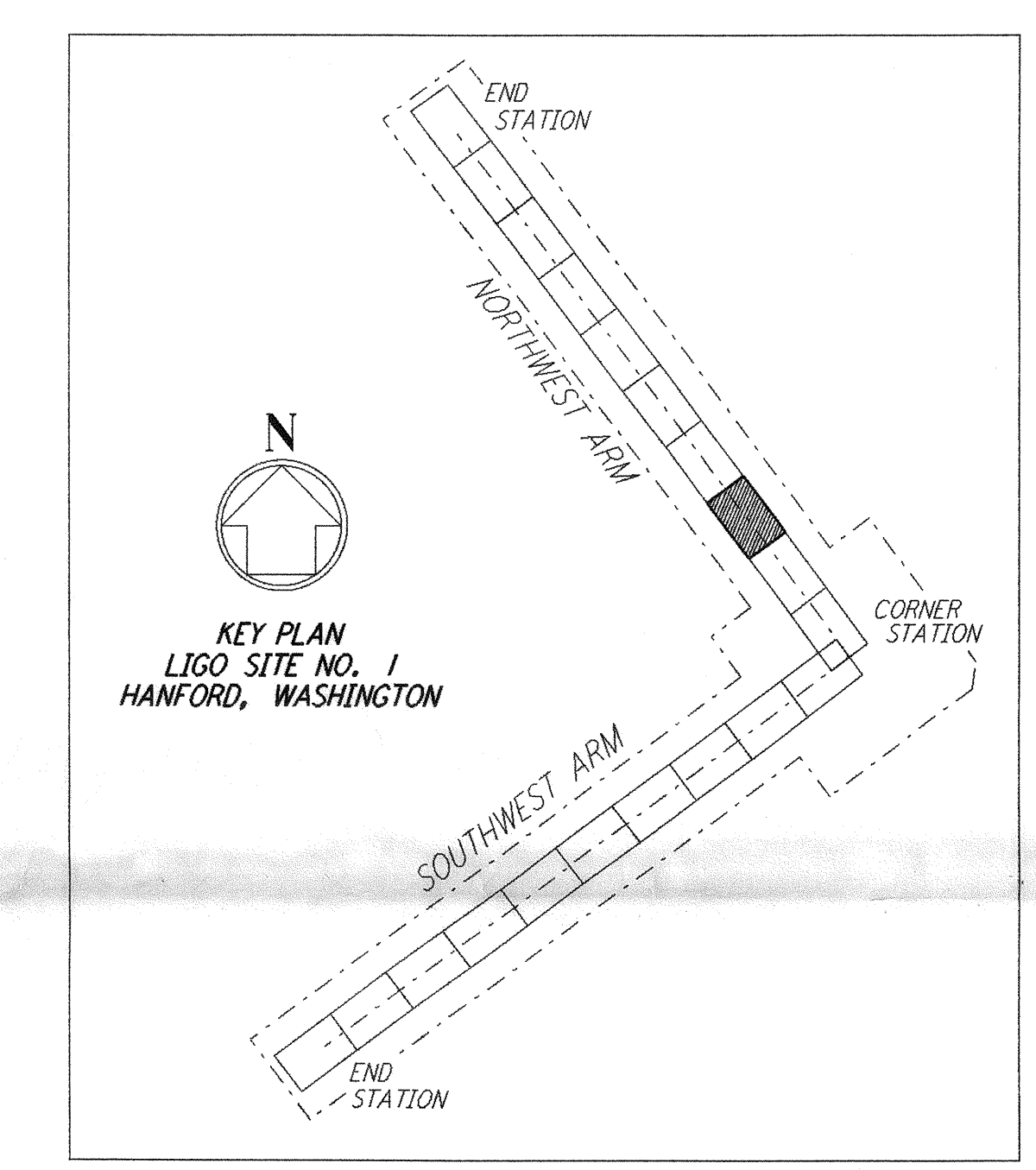
- NOTES:**
- SEE SHEET BT-C-002 FOR GENERAL NOTES, LEGEND AND ABBREVIATIONS.
 - SEE SHEET BT-C-004 FOR TYPICAL SECTIONS AND DETAILS.



PROFILE
 SCALES: HORIZ: 1" = 50'
 VERT: 1" = 5'



PLAN
 SCALE: 1" = 50'



0960168-0-0

not be reproduced, copied, loaned, exhibited, or used in any other way, except by written consent from PARSONS to the borrower.

This document and the design it covers are the property of PARSONS. They are loaned only with the borrower's expressed written agreement that they will

| NO. | DATE | BY | CHKD | ENGR | PROJ | DESCRIPTION |
|-----|----------|-----|------|------|------|---------------------------|
| D | 11/21/95 | WRB | | | | ISSUED FOR BID |
| C | 11/6/95 | WRB | | | | FINAL DESIGN REVIEW |
| B | 10/3/95 | WRB | | | | DRAFT FINAL DESIGN REPORT |
| A | 8/14/95 | WRB | | | | PRELIMINARY DESIGN REPORT |

| | |
|----------|-----|
| DRAWN | WRB |
| CHECKED | |
| ENGINEER | |
| PROJ | |



100 WEST WALNUT STREET
 PASADENA, CALIFORNIA



CALIFORNIA INSTITUTE OF TECHNOLOGY
 MASSACHUSETTS INSTITUTE OF TECHNOLOGY

| | | |
|--|--------------|-----------------|
| LASER INTERFEROMETER GRAVITATIONAL-WAVE OBSERVATORY BTE SITework & FABRICATION - HANFORD, WA | | |
| TITLE | SCALE | CONTRACT NUMBER |
| NORTHWEST ARM PLAN AND PROFILE STA 28+00 TO STA 42+00 | AS NOTED | PP150969 |
| | SHEET NUMBER | PROJECT NUMBER |
| | BT-C-013 | 8094 |