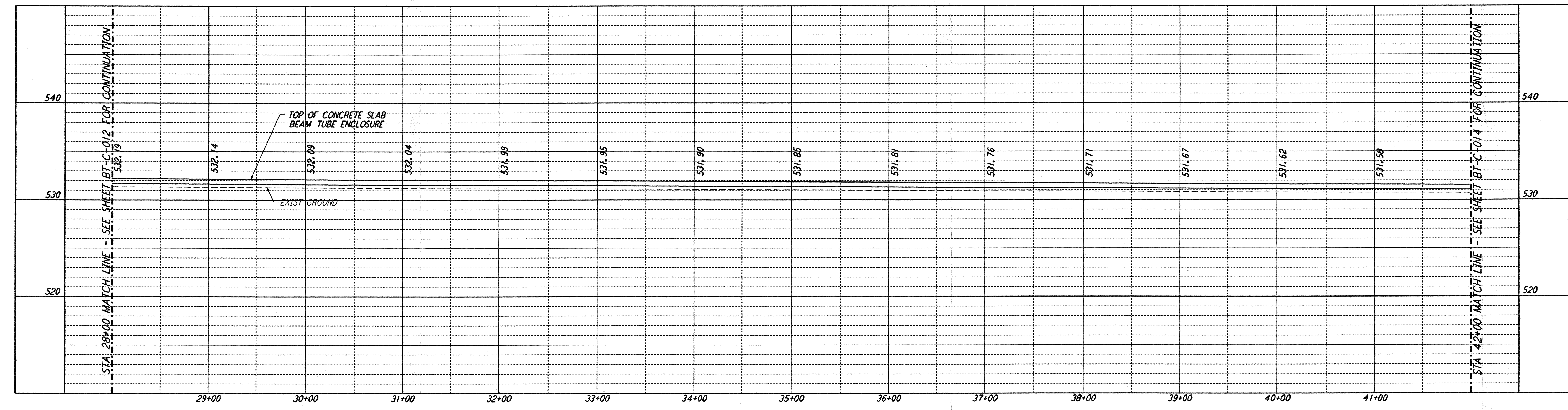
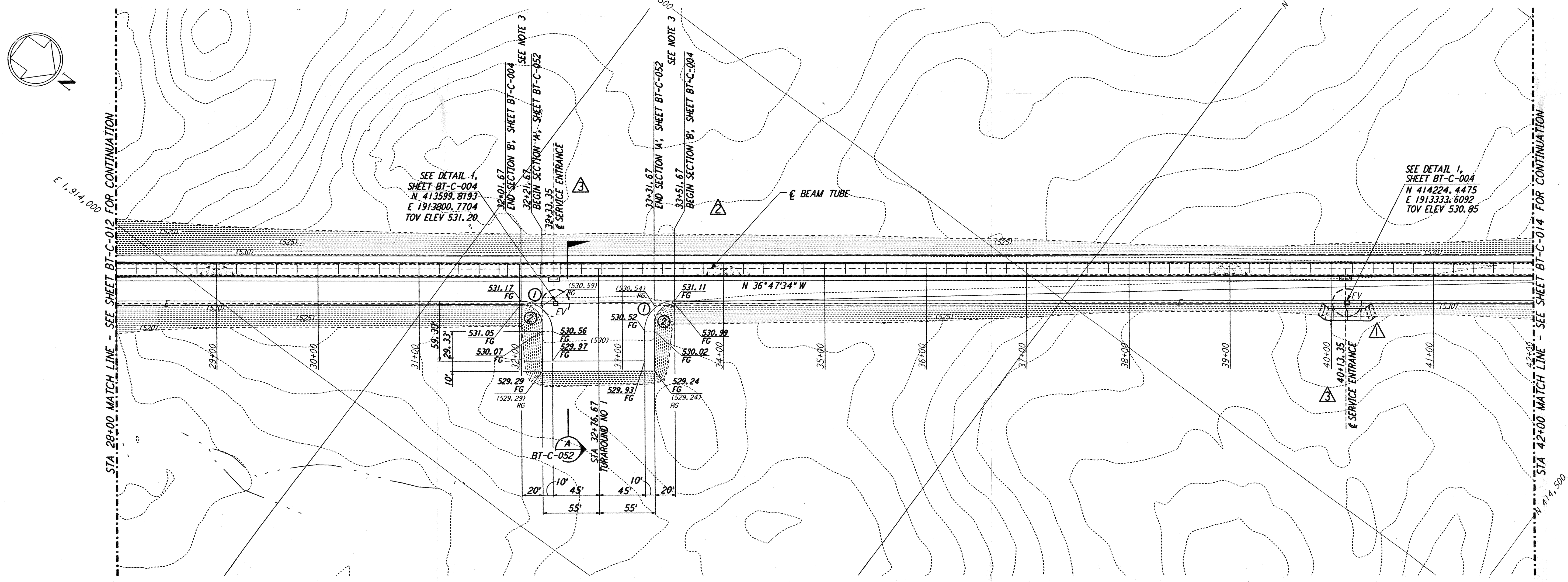


not be reproduced, copied, loaned, exhibited, or used in any other way, except by written consent from PARSONS to the borrower.

This document and the design it covers are the property of PARSONS. They are loaned only with the borrower's expressed written agreement that they will



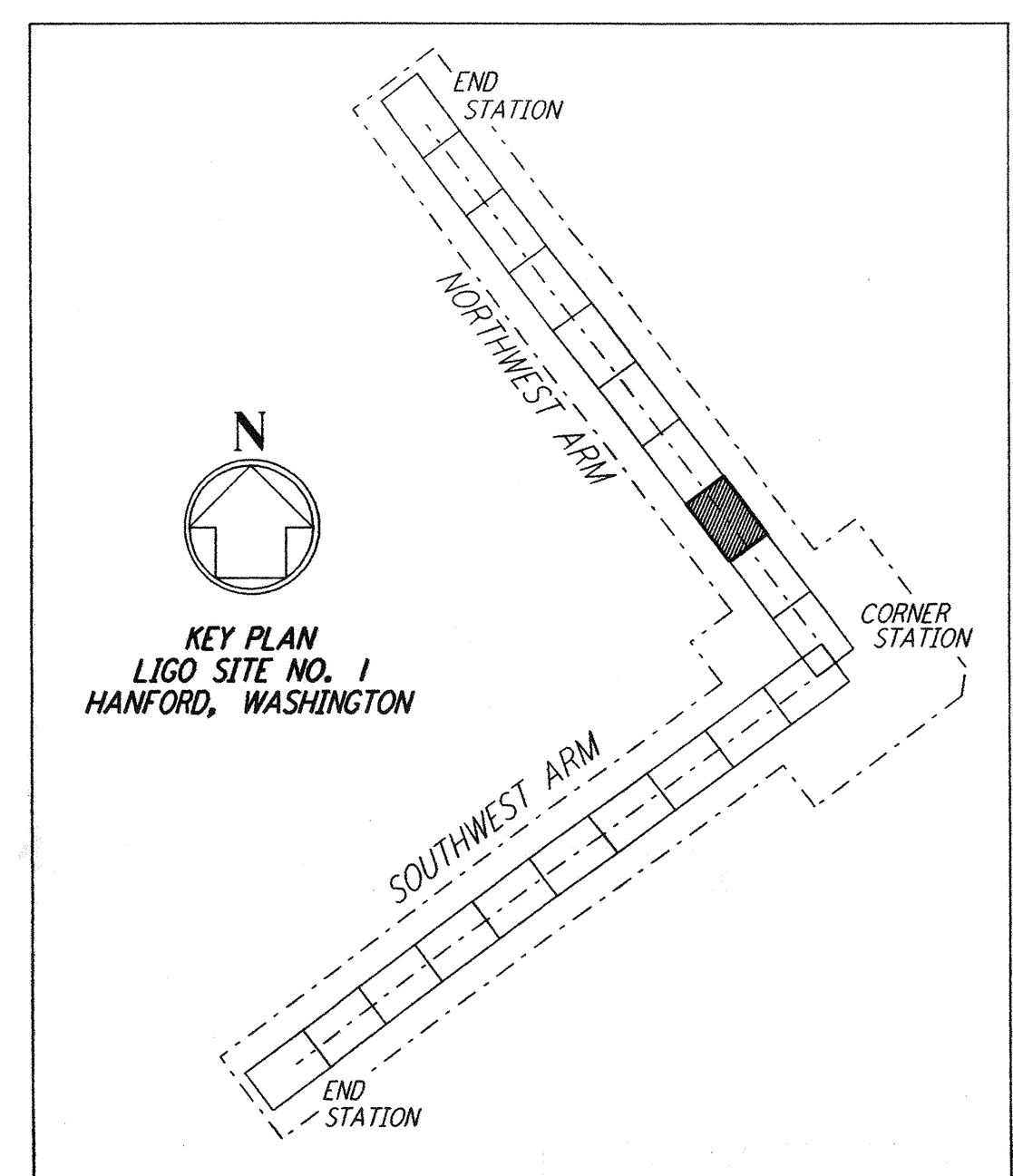
PROFILE
 SCALES: HORIZ: 1" = 50'
 VERT: 1" = 5'



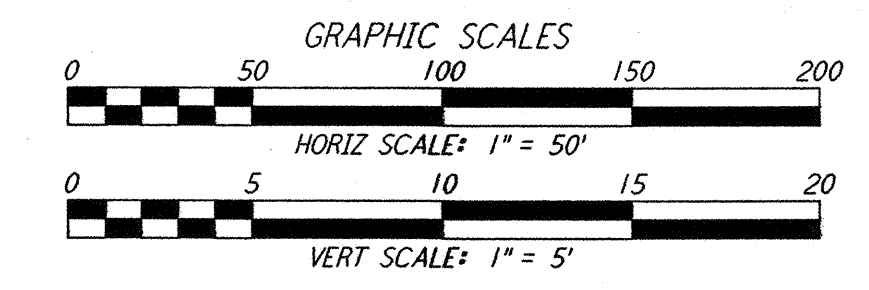
PLAN
 SCALE: 1" = 50'

- NOTES:**
- SEE SHEET BT-C-002 FOR GENERAL NOTES, LEGEND AND ABBREVIATIONS.
 - SEE SHEET BT-C-004 FOR TYPICAL SECTIONS AND DETAILS.
 - TRANSITION BETWEEN SECTIONS, AS SHOWN ON PLAN.

CURVE DATA			
Δ	RADIUS	LENGTH	TANGENT
1	90°00'00"	30'	47.12'
2	90°00'00"	20'	31.42'



LIGO-D960168-04-O



NO.	DATE	BY	CHKD	ENGR	PROJ	DESCRIPTION
4	1-22-99	MEI	--	--	MDW	ISSUED FOR AS BUILT
3	5-10-96	WRB	TDM	JB	MDW	REVISED BEAM TUBE SERVICE ENTRANCES
2	4-19-96	WRB	TDM	JB	MDW	CHANGE ORDER NO. 4
1	2-29-96	WRB	TDM	JB	MDW	CHANGE ORDER NO. 2

ISSUED FOR CONSTRUCTION
 DRAWN: WRB 1-19-96
 CHECKED: MP 1-19-96
 ENGINEER: JB 1-19-96
 PROJ: MDW 1-19-96

AS-BUILT DRAWINGS

PARSONS
 100 WEST WALNUT STREET
 PASADENA, CALIFORNIA

LIGO
 CALIFORNIA INSTITUTE OF TECHNOLOGY
 MASSACHUSETTS INSTITUTE OF TECHNOLOGY

LASER INTERFEROMETER
 GRAVITATIONAL-WAVE OBSERVATORY
 BTE SITWORK & FABRICATION - HANFORD, WA

CIVIL
 NORTHWEST ARM
 PLAN AND PROFILE
 STA 28+00 TO STA 42+00

AS NOTED PPI50969 8094
BT-C-013