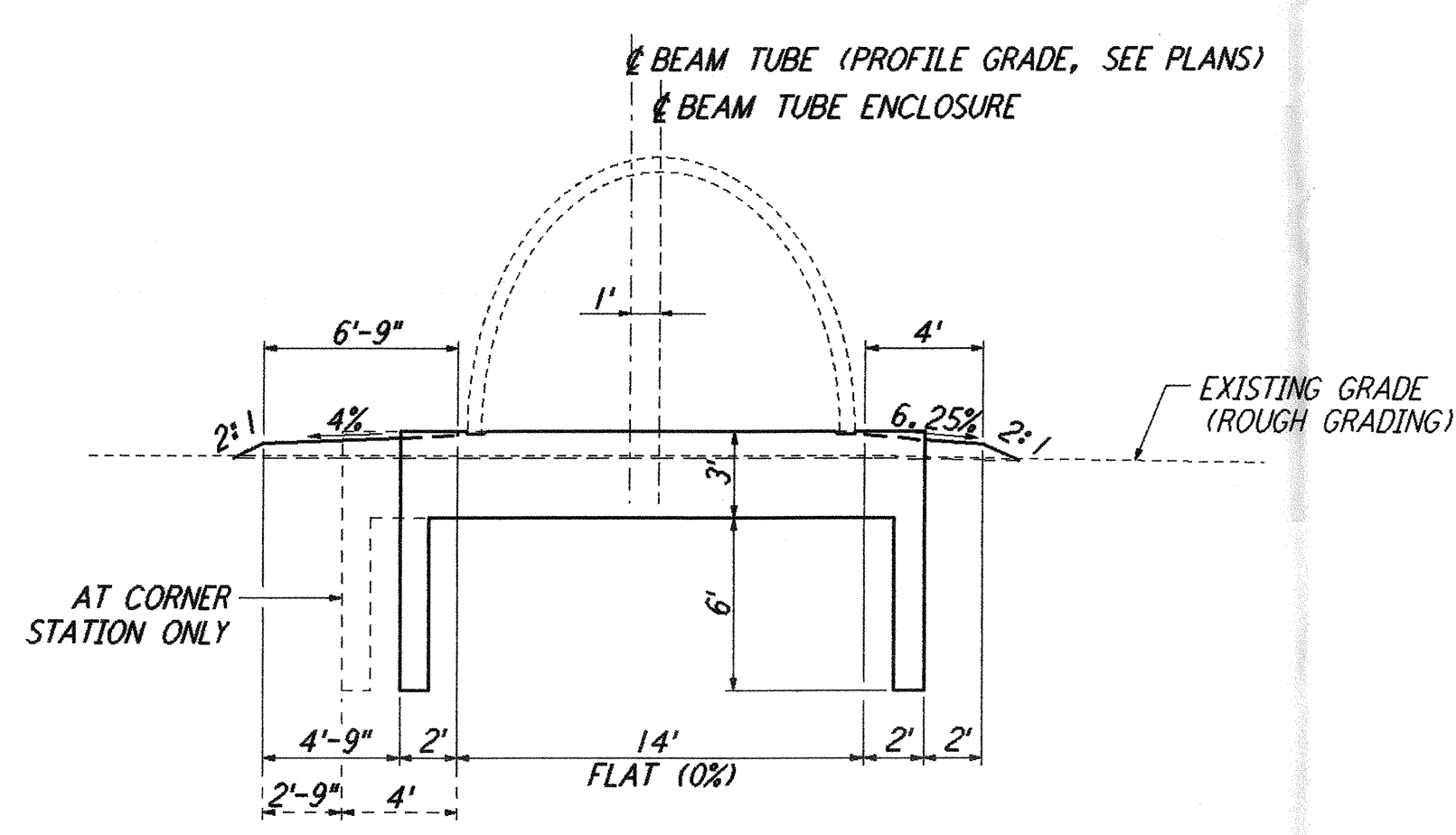


**SECTION A**  
 NOT TO SCALE  
 REF: BT-C-004, BT-C-005, BT-C-011, BT-C-015, BT-C-020, BT-C-031, BT-C-035, BT-C-040

**NORTHWEST ARM:** STA 1+72.48 THRU STA 6+35.00  
 STA 63+56.67 THRU STA 65+64.72  
 STA 66+71.80 THRU STA 67+96.67  
 STA 128+56.67 THRU STA 130+64.05

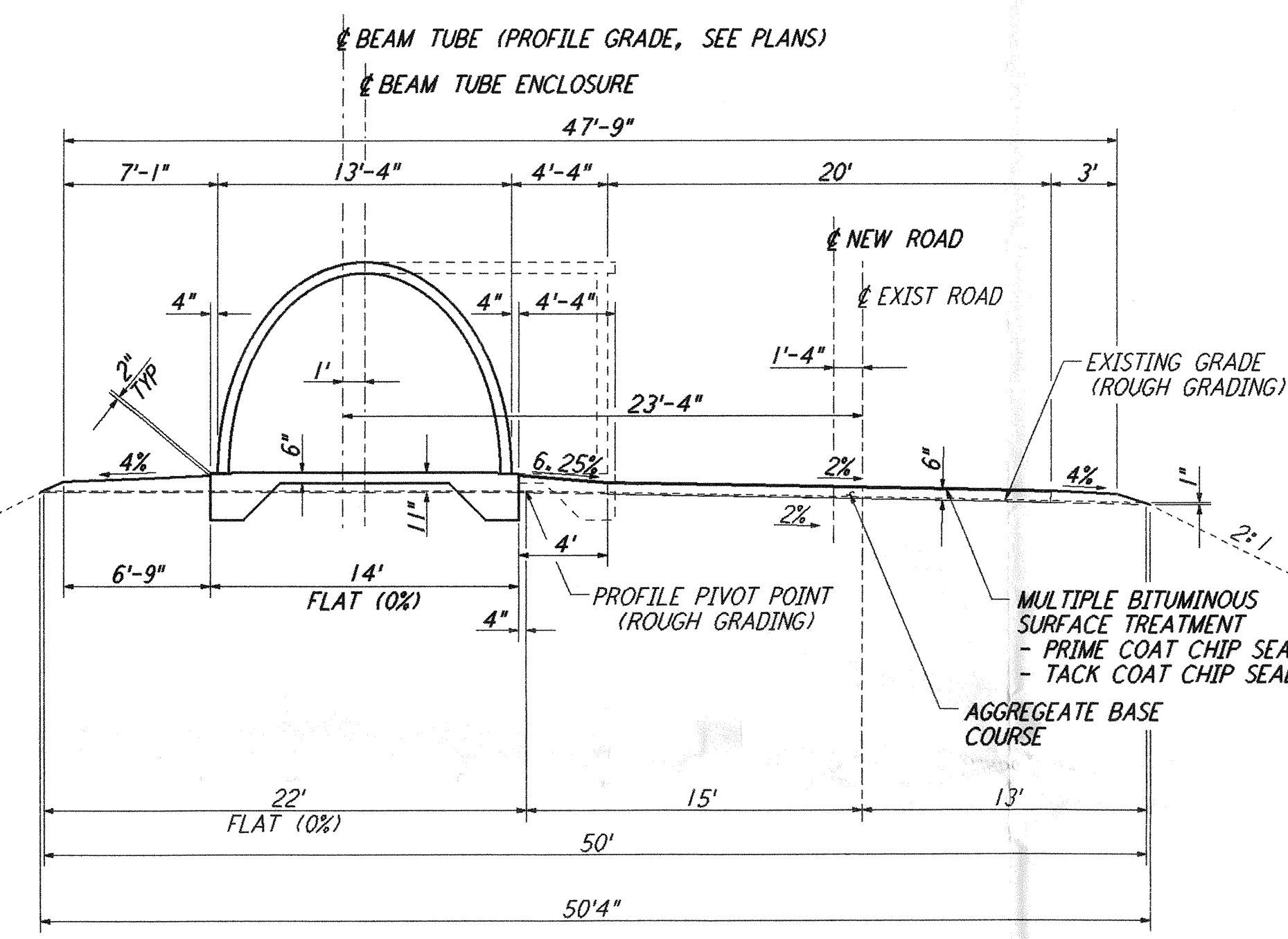
**SOUTHWEST ARM:** STA 1+72.48 THRU STA 5+22.76  
 STA 63+56.67 THRU STA 65+64.72  
 STA 66+71.80 THRU STA 67+96.67  
 STA 128+56.67 THRU STA 130+64.05



**SECTION A (SIM)**  
 NOT TO SCALE  
 REF: BT-C-004, BT-C-005, BT-C-011, BT-C-015, BT-C-020, BT-C-031, BT-C-035, BT-C-040

**NORTHWEST ARM:** STA 1+47.48 THRU STA 1+72.48  
 STA 65+64.72 THRU STA 65+89.72  
 STA 66+46.80 THRU STA 66+71.80  
 STA 130+64.05 THRU STA 130+89.05

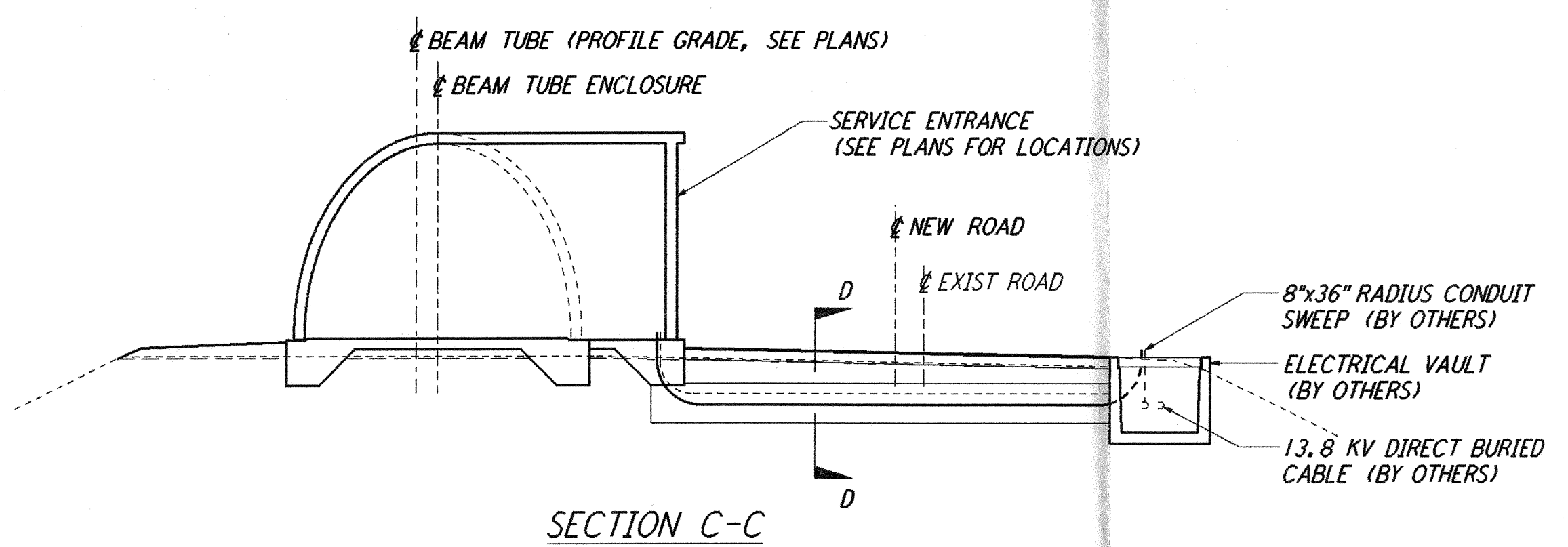
**SOUTHWEST ARM:** STA 1+47.48 THRU STA 1+72.76  
 STA 65+64.72 THRU STA 65+89.72  
 STA 66+46.80 THRU STA 66+71.80  
 STA 130+64.05 THRU STA 130+89.05



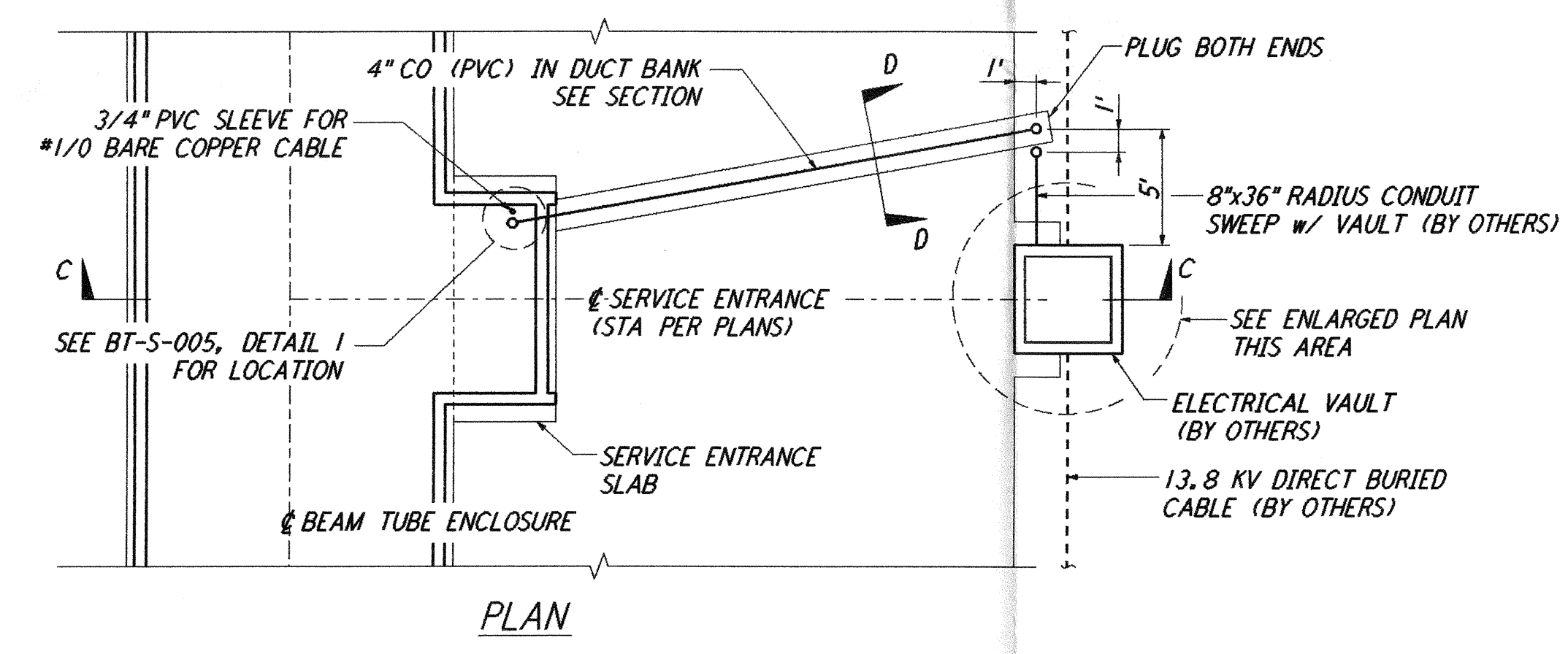
**SECTION B**  
 NOT TO SCALE  
 REF: BT-C-004, BT-C-005, BT-C-011 THRU BT-C-020, BT-C-031 THRU BT-C-040

**NORTHWEST ARM:** STA 6+35.00 THRU STA 63+56.67  
 STA 67+96.67 THRU STA 128+56.67

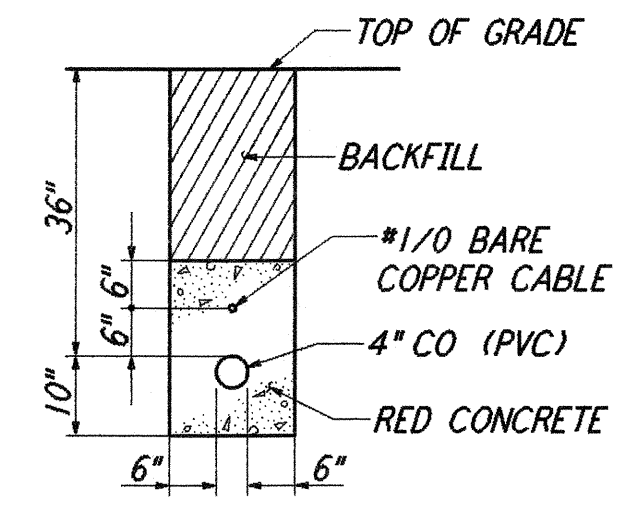
**SOUTHWEST ARM:** STA 5+22.76 THRU STA 63+56.67  
 STA 67+96.67 THRU STA 128+56.67



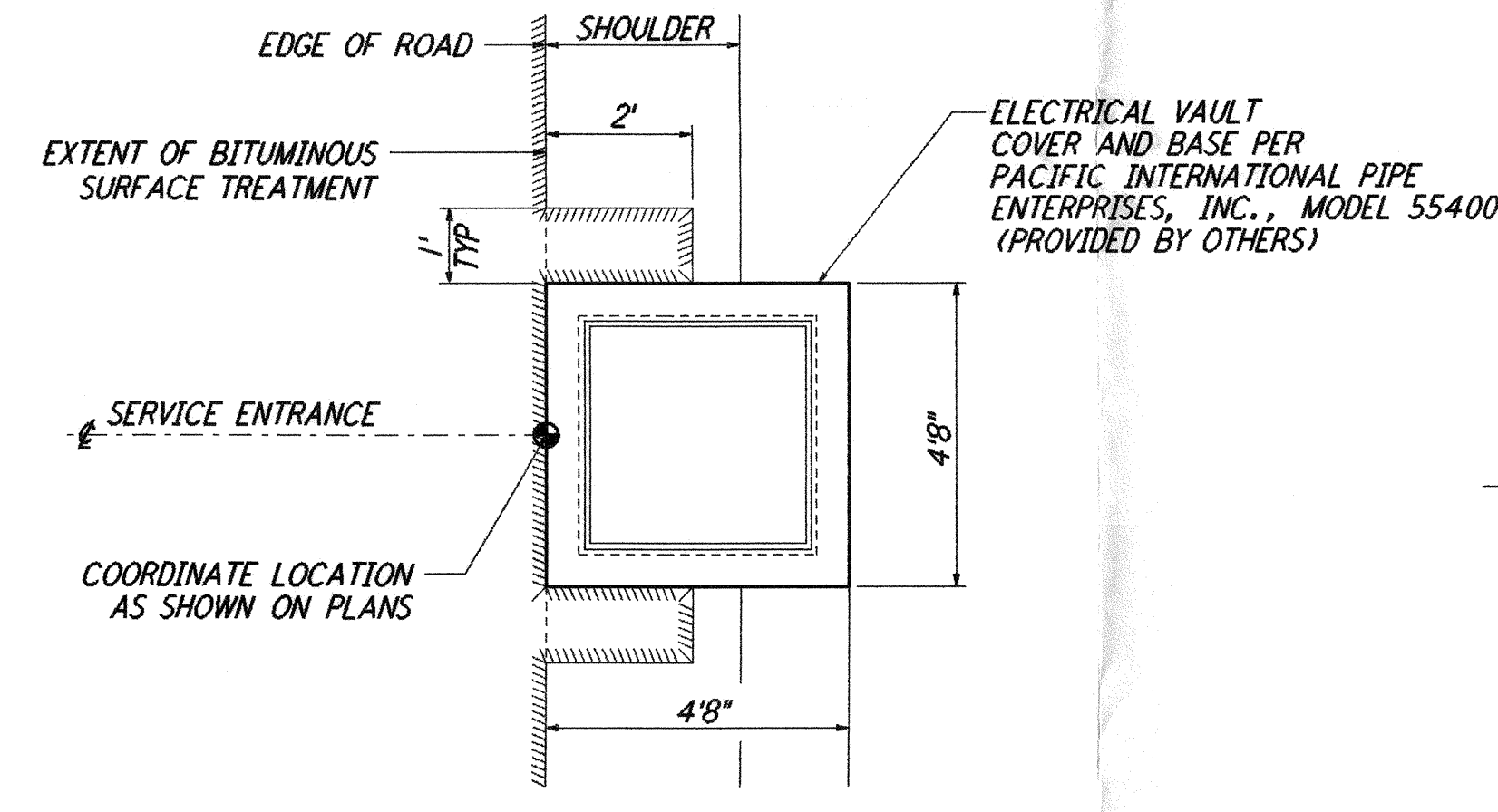
**SECTION C-C**  
 NOTE: REFER TO SECTIONS 'A' AND 'B' FOR DIMENSIONS AND CALLOUTS NOT SHOWN ON THIS SECTION.



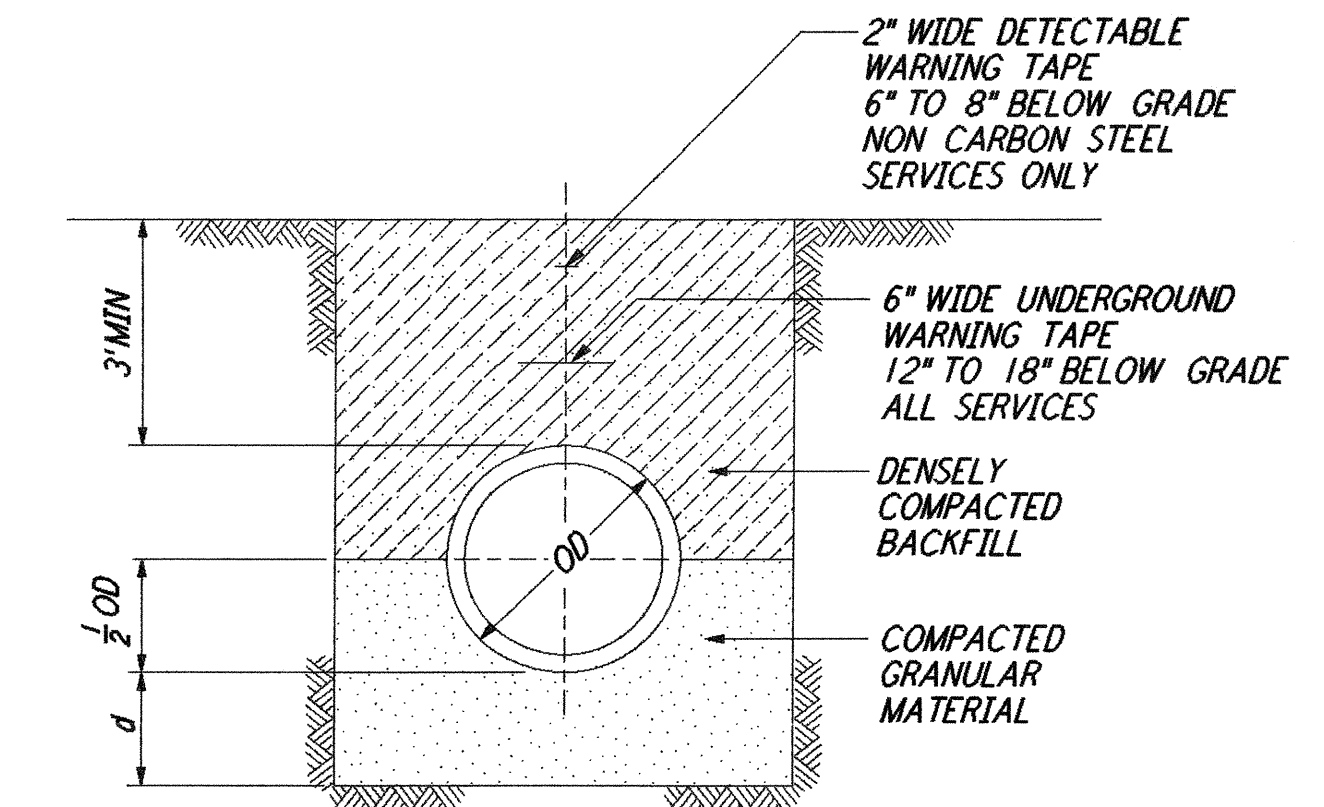
**TYPICAL LOCATION PLAN @ SERVICE ENTRANCE FOR ELECTRICAL VAULT**  
 NOT TO SCALE  
 REF: BT-C-004, BT-C-005, BT-C-011 THRU BT-C-014, BT-C-016 THRU BT-C-019, BT-C-031 THRU BT-C-034, BT-C-036 THRU BT-C-039



**SECTION D-D**

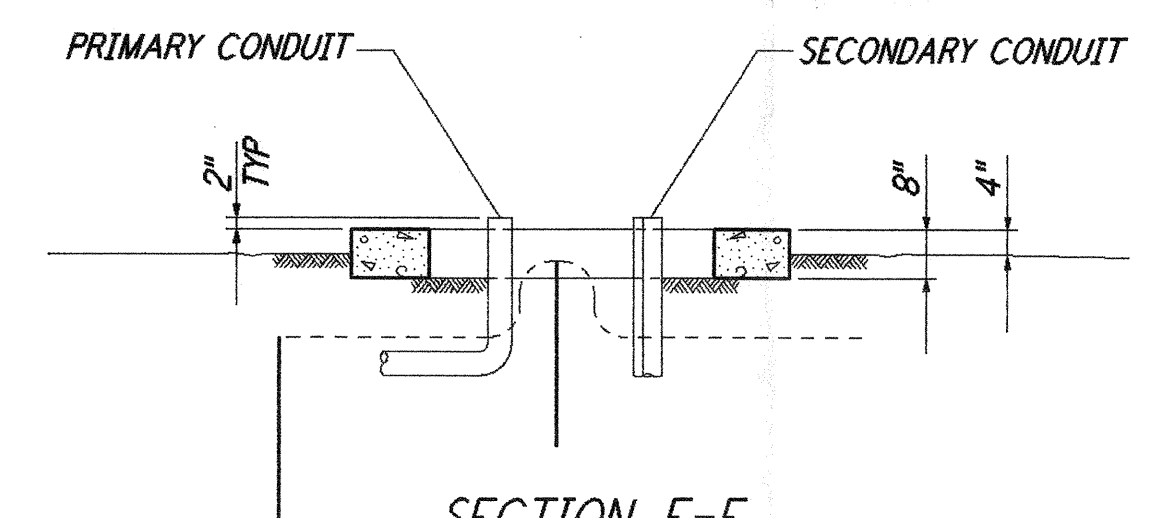


**ENLARGED PLAN @ VAULT**

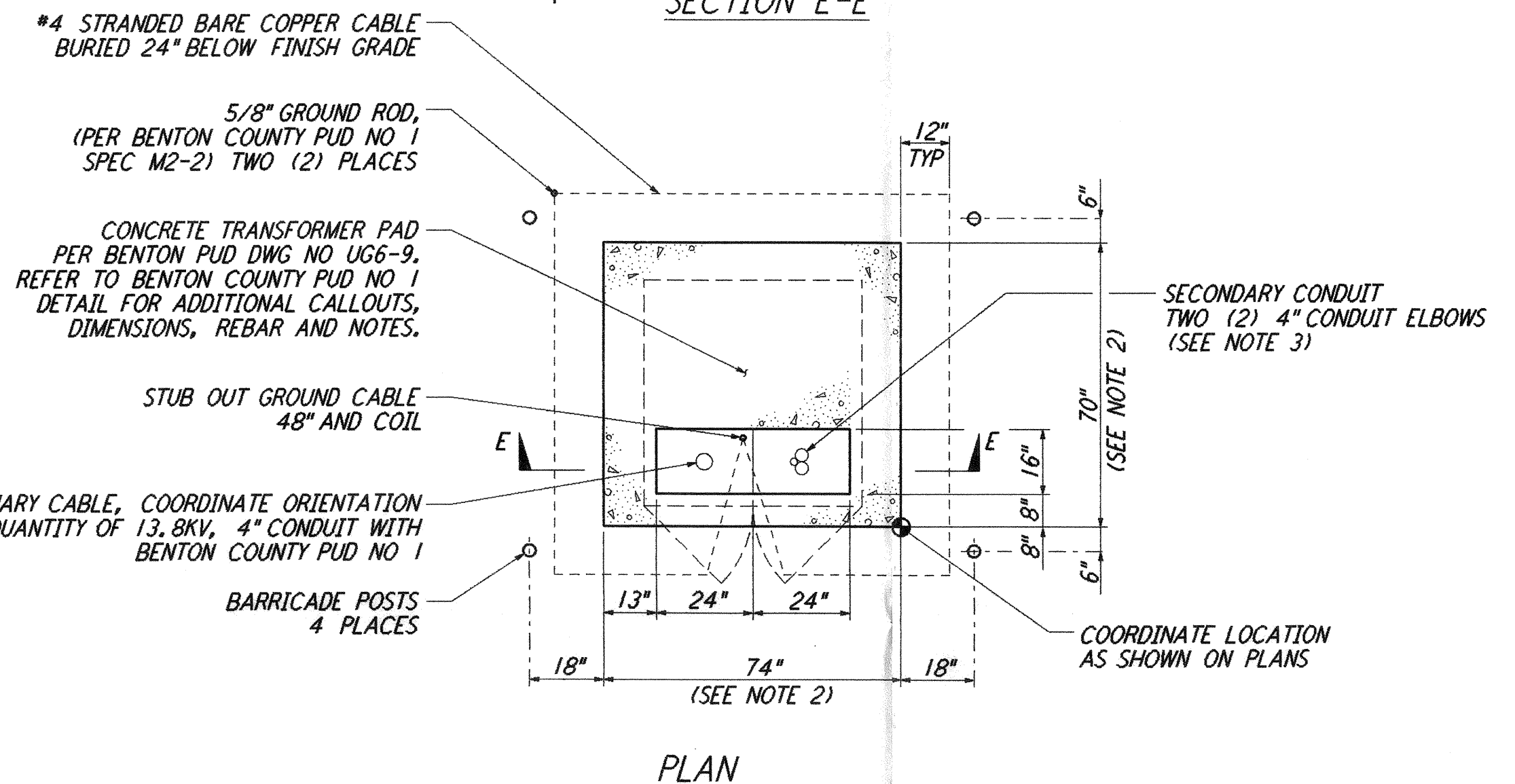


DEPTH OF BEDDING MATERIAL BELOW PIPE	
ID	d (MIN)
27" & SMALLER	3"

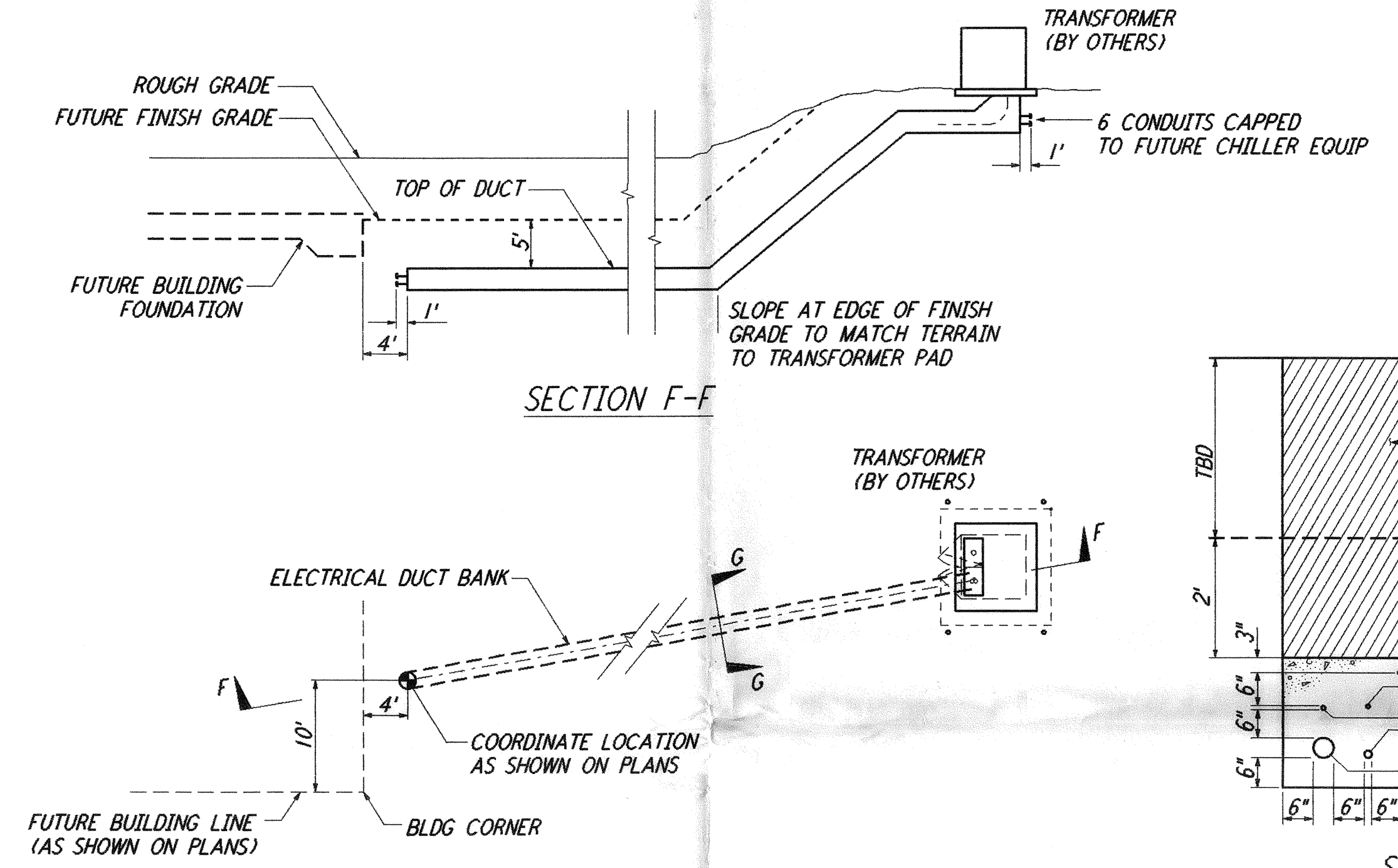
**TRENCH BEDDING**  
 NOT TO SCALE  
 REF: BT-C-004, BT-C-005, BT-C-011, BT-C-031



**SECTION E-E**

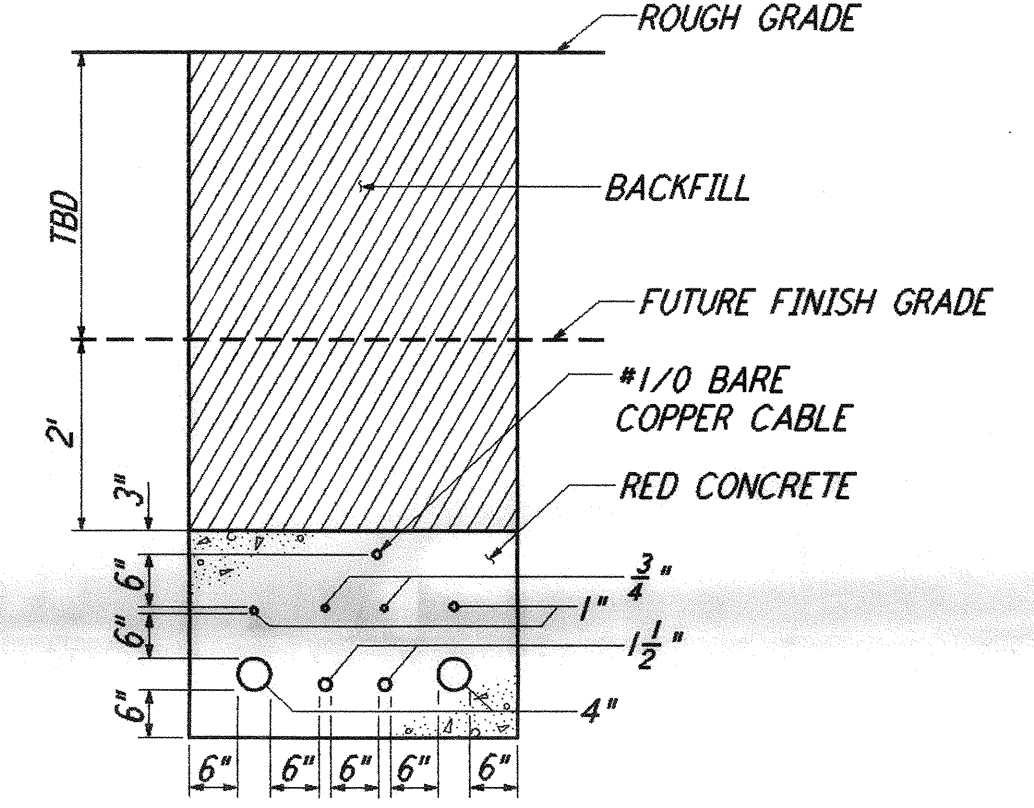


**TYPICAL LOCATION PLAN FOR ELECTRICAL TRANSFORMER PAD**  
 NOT TO SCALE  
 REF: BT-C-004, BT-C-005, BT-C-015, BT-C-020, BT-C-035, BT-C-040



**SECTION F-F**

**TYPICAL PLAN @ MID AND END STATIONS FOR ELECTRICAL DUCT BANK**  
 NOT TO SCALE  
 REF: BT-C-004, BT-C-015, BT-C-020, BT-C-035, BT-C-040



**SECTION G-G**

**TYPICAL PLAN @ MID AND END STATIONS FOR ELECTRICAL DUCT BANK**  
 NOT TO SCALE  
 REF: BT-C-004, BT-C-015, BT-C-020, BT-C-035, BT-C-040

NO.	DATE	BY	CHKD	ENGR	PROJ	DESCRIPTION
D	11/21/95	WRB				ISSUED FOR BID
C	11/6/95	WRB				FINAL DESIGN REVIEW
B	10/3/95	WRB				DRAFT FINAL DESIGN REPORT
A	8/14/95	WRB				PRELIMINARY DESIGN REPORT

DRAWN	WRB
CHECKED	
ENGINEER	
PROJ	

**PARSONS**  
 100 WEST WALNUT STREET  
 PASADENA, CALIFORNIA

**LIGO**  
 CALIFORNIA INSTITUTE OF TECHNOLOGY  
 MASSACHUSETTS INSTITUTE OF TECHNOLOGY

LASER INTERFEROMETER  
 GRAVITATIONAL-WAVE OBSERVATORY  
 BTE SITEWORK & FABRICATION - HANFORD, WA

**TYPICAL SECTIONS AND DETAILS**  
**BT-C-004**

SCALE: NONE  
 CONTRACT NUMBER: PPI50969  
 PROJECT NUMBER: 8094

This document and the design it covers are the property of PARSONS. They are loaned only with the borrower's expressed written agreement that they will not be reproduced, copied, loaned, exhibited, or used in any other way, except by written consent from PARSONS to the borrower.

TUB NO. 21 10/20/2000 11:20 53\*VARDZ... JUNTULU3\INDUCES\Y\BRC\CALE\B044.PPT