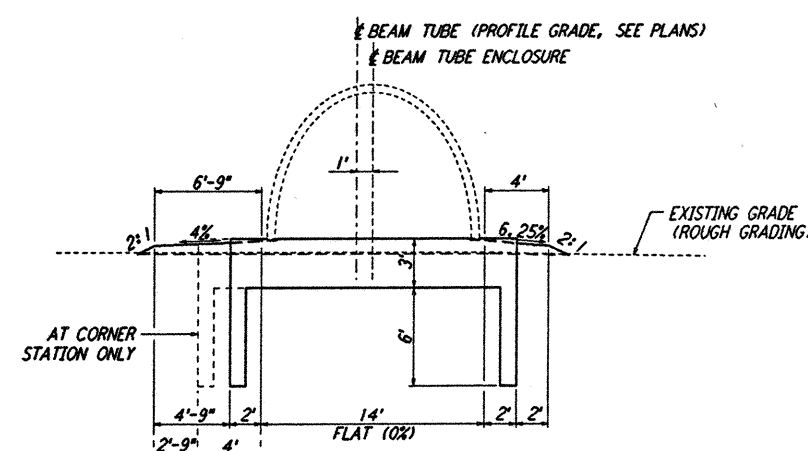


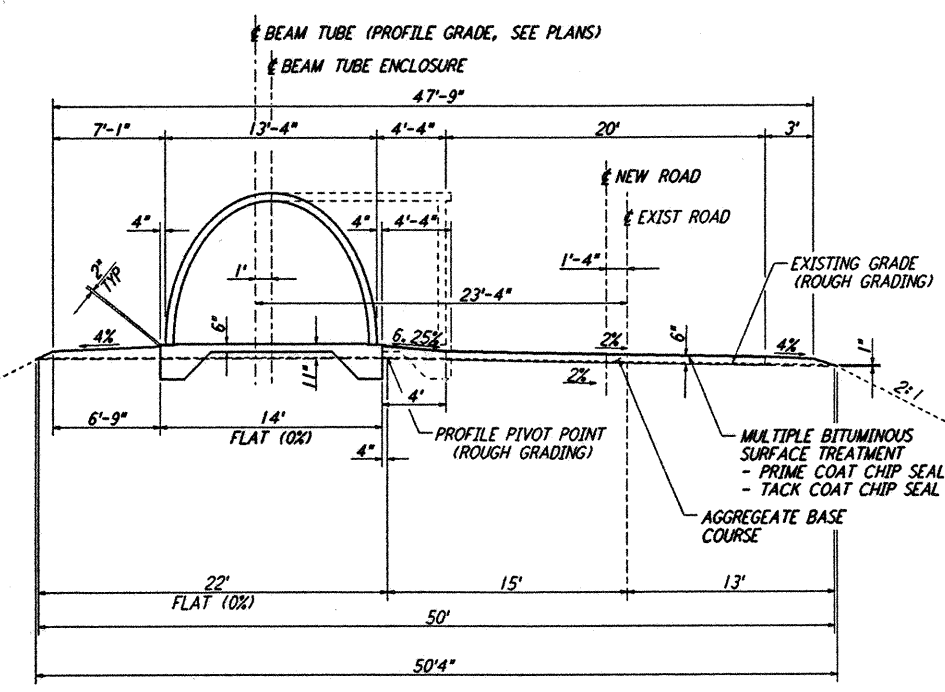
SECTION A
NOT TO SCALE

NORTHWEST ARM: STA 1+72.48 THRU STA 6+35.00
STA 63+56.67 THRU STA 65+64.72
STA 66+71.80 THRU STA 67+96.67
STA 128+56.67 THRU STA 130+64.05



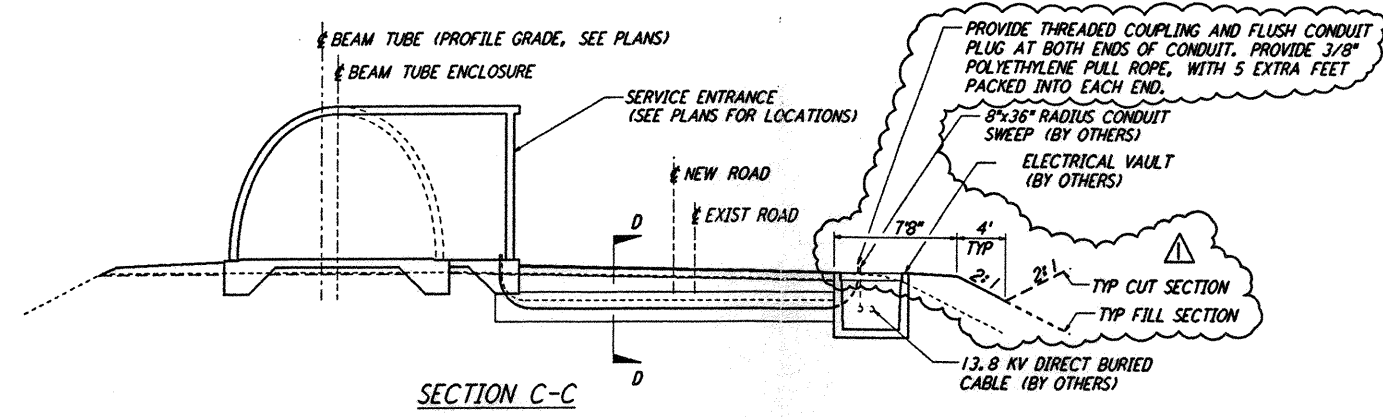
SECTION A (SIM)
NOT TO SCALE

NORTHWEST ARM: STA 1+47.48 THRU STA 1+72.48
STA 65+64.72 THRU STA 65+89.72
STA 66+46.80 THRU STA 66+71.80
STA 130+64.05 THRU STA 130+89.05

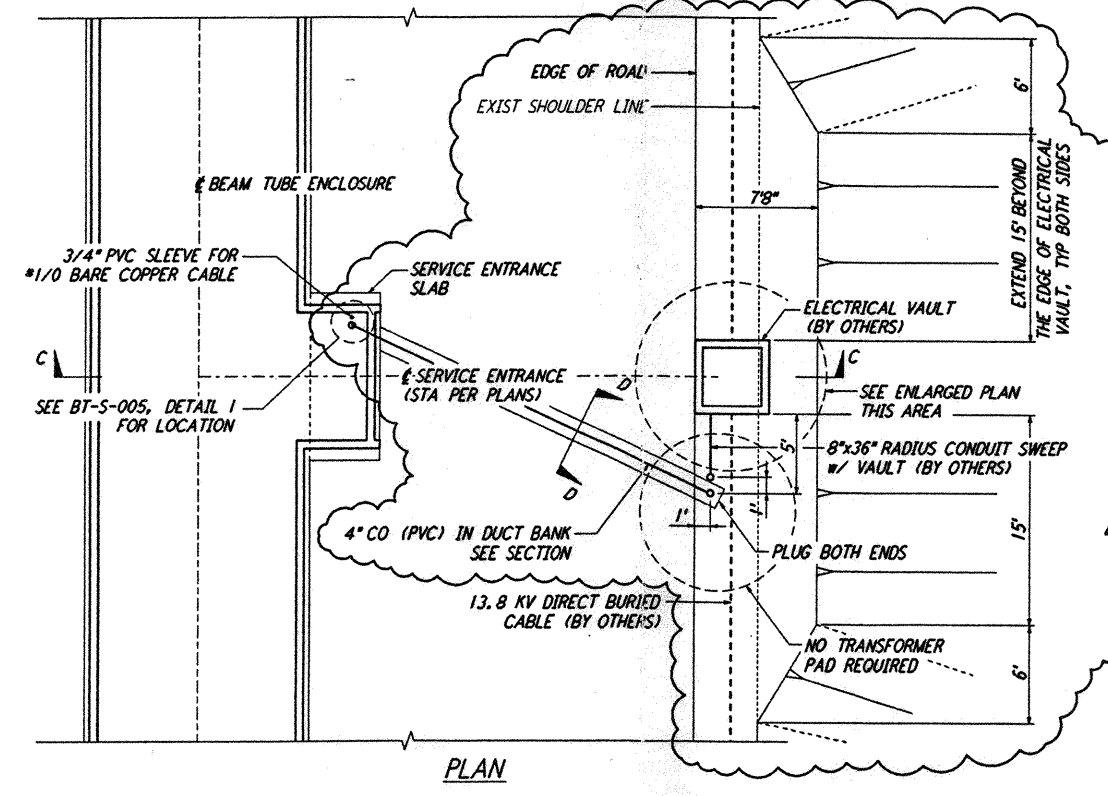


SECTION B
NOT TO SCALE

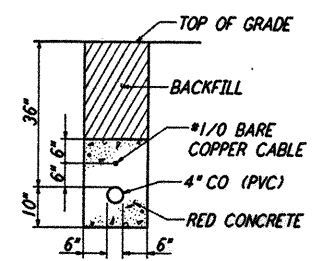
NORTHWEST ARM: STA 6+35.00 THRU STA 63+56.67
STA 67+96.67 THRU STA 128+56.67



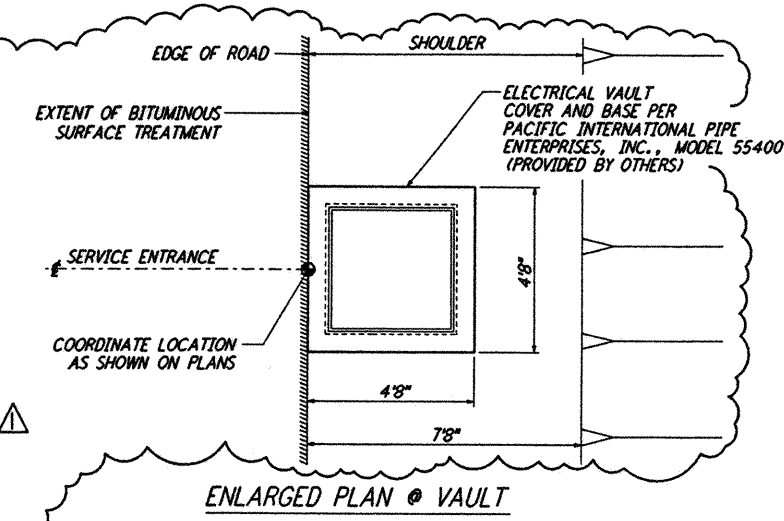
SECTION C-C
NOTE: REFER TO SECTIONS 'A' AND 'B' FOR DIMENSIONS AND CALLOUTS NOT SHOWN ON THIS SECTION.



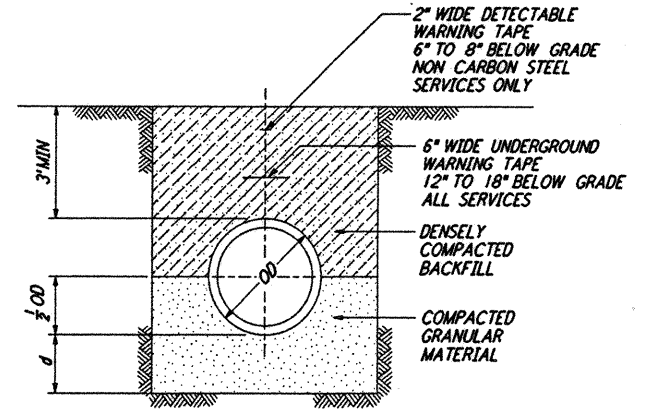
TYPICAL LOCATION PLAN @ SERVICE ENTRANCE FOR ELECTRICAL VAULT
NOT TO SCALE



SECTION D-D



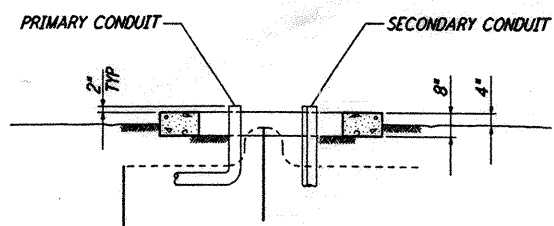
ENLARGED PLAN @ VAULT



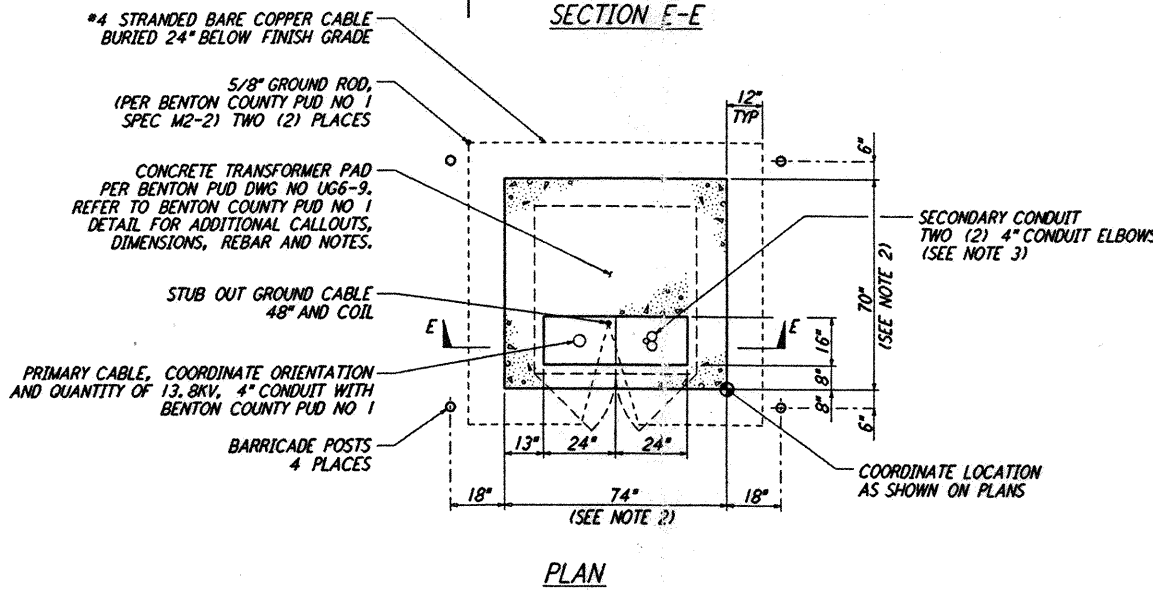
DEPTH OF BEDDING MATERIAL BELOW PIPE

ID	Ø (MIN)
2" & SMALLER	3"

TRENCH BEDDING
NOT TO SCALE

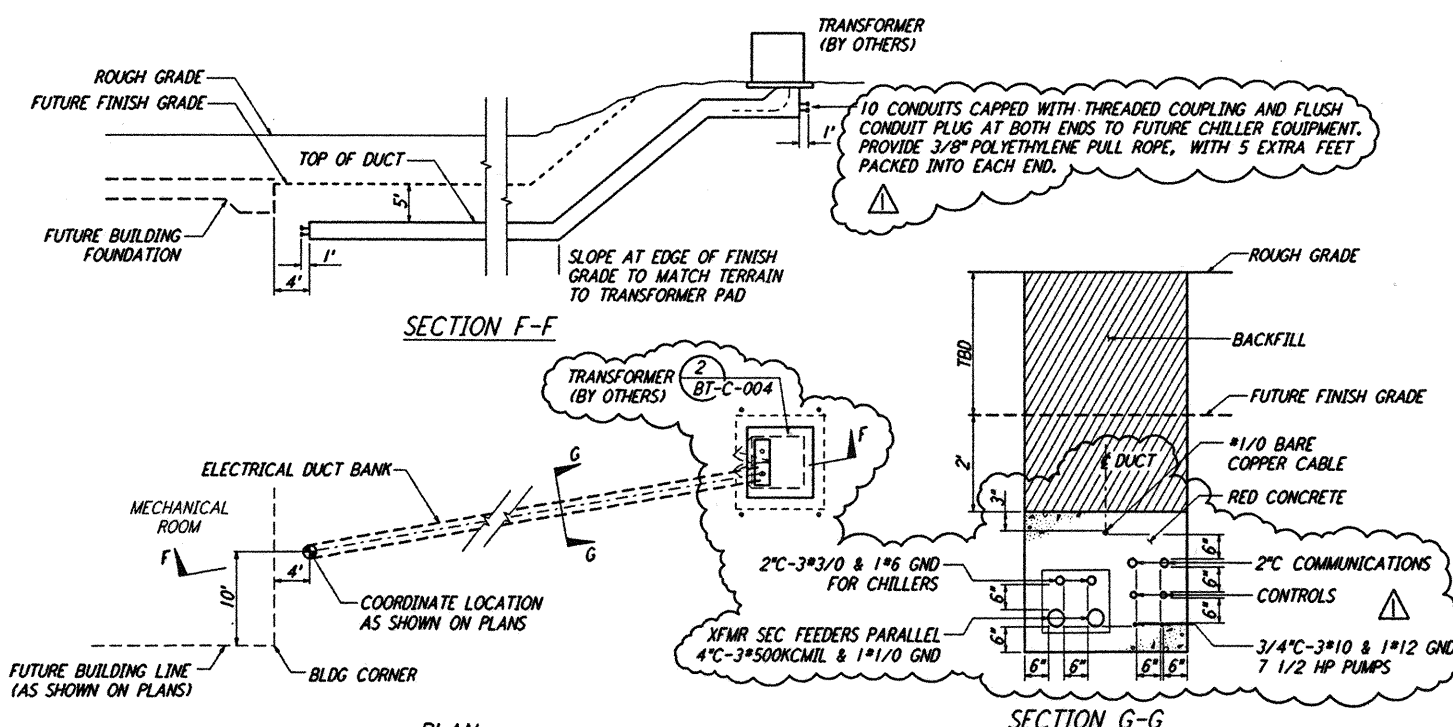


SECTION E-E



NOTE: ORIENT PAD SUCH THAT DOORS FACE TOWARDS THE BEAM TUBE EMBANKMENT

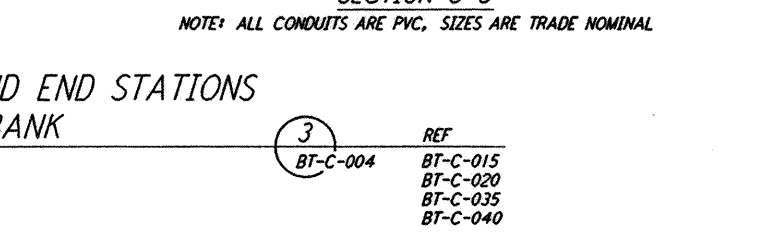
TYPICAL LOCATION PLAN FOR ELECTRICAL TRANSFORMER PAD
NOT TO SCALE



SECTION F-F



TYPICAL PLAN @ MID AND END STATIONS FOR ELECTRICAL DUCT BANK
NOT TO SCALE



SECTION G-G
NOTE: ALL CONDUITS ARE PVC. SIZES ARE TRADE NOMINAL

not be reproduced, copied, loaned, exhibited, or used in any other way, except by written consent from PARSONS to the borrower.

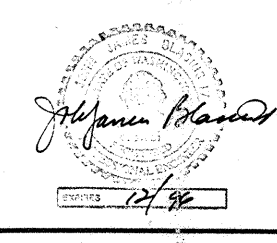
This document and the design it covers are the property of PARSONS. They are loaned only with the borrower's expressed written agreement that they will

REVISED

NO.	DATE	BY	CHKD	ENGR	PROJ	DESCRIPTION
1	2-29-96	WRB				CHANGE ORDER NO. 2

ISSUED FOR CONSTRUCTION

DRAWN	WRB	1-19-96
CHECKED	MP	1-19-96
ENGINEER	JB	1-19-96
PROJ	MDW	1-19-96



PARSONS
100 WEST WALNUT STREET
PASADENA, CALIFORNIA

LIGO
CALIFORNIA INSTITUTE OF TECHNOLOGY
MASSACHUSETTS INSTITUTE OF TECHNOLOGY

LASER INTERFEROMETER
GRAVITATIONAL-WAVE OBSERVATORY
BTE SITENWORK & FABRICATION - HANFORD, WA

TITLE	SCALE	CONTRACT NUMBER	PROJECT NUMBER
CIVIL TYPICAL SECTIONS AND DETAILS	NONE	PP150969	8094

BT-C-004