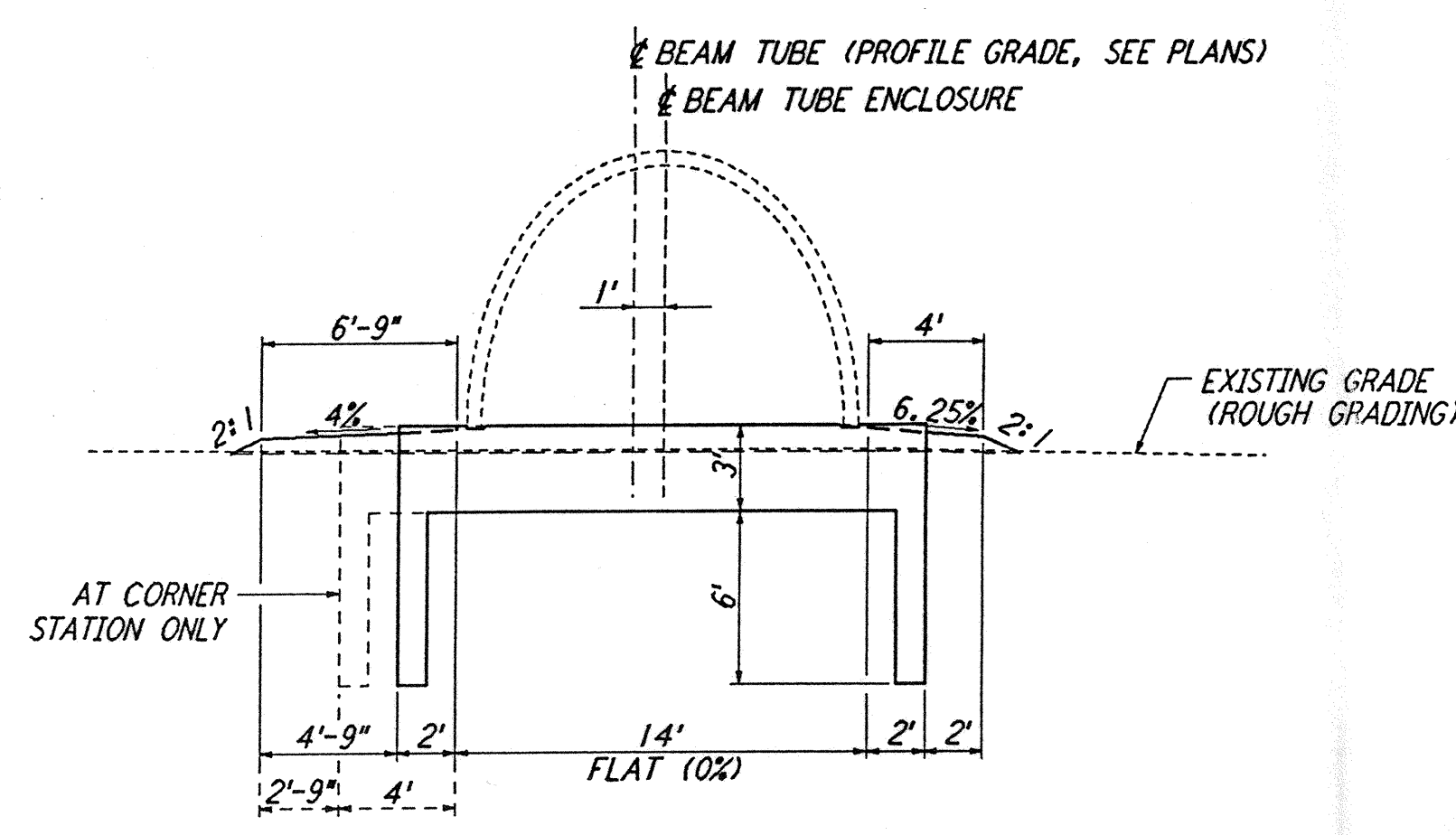


SECTION A
 NOT TO SCALE
 REF: BT-C-004, BT-C-005, BT-C-011, BT-C-015, BT-C-020, BT-C-031, BT-C-035, BT-C-040

NORTHWEST ARM: STA 1+72.48 THRU STA 6+35.00
 STA 63+56.67 THRU STA 65+64.72
 STA 66+71.80 THRU STA 67+96.67
 STA 128+56.67 THRU STA 130+64.05

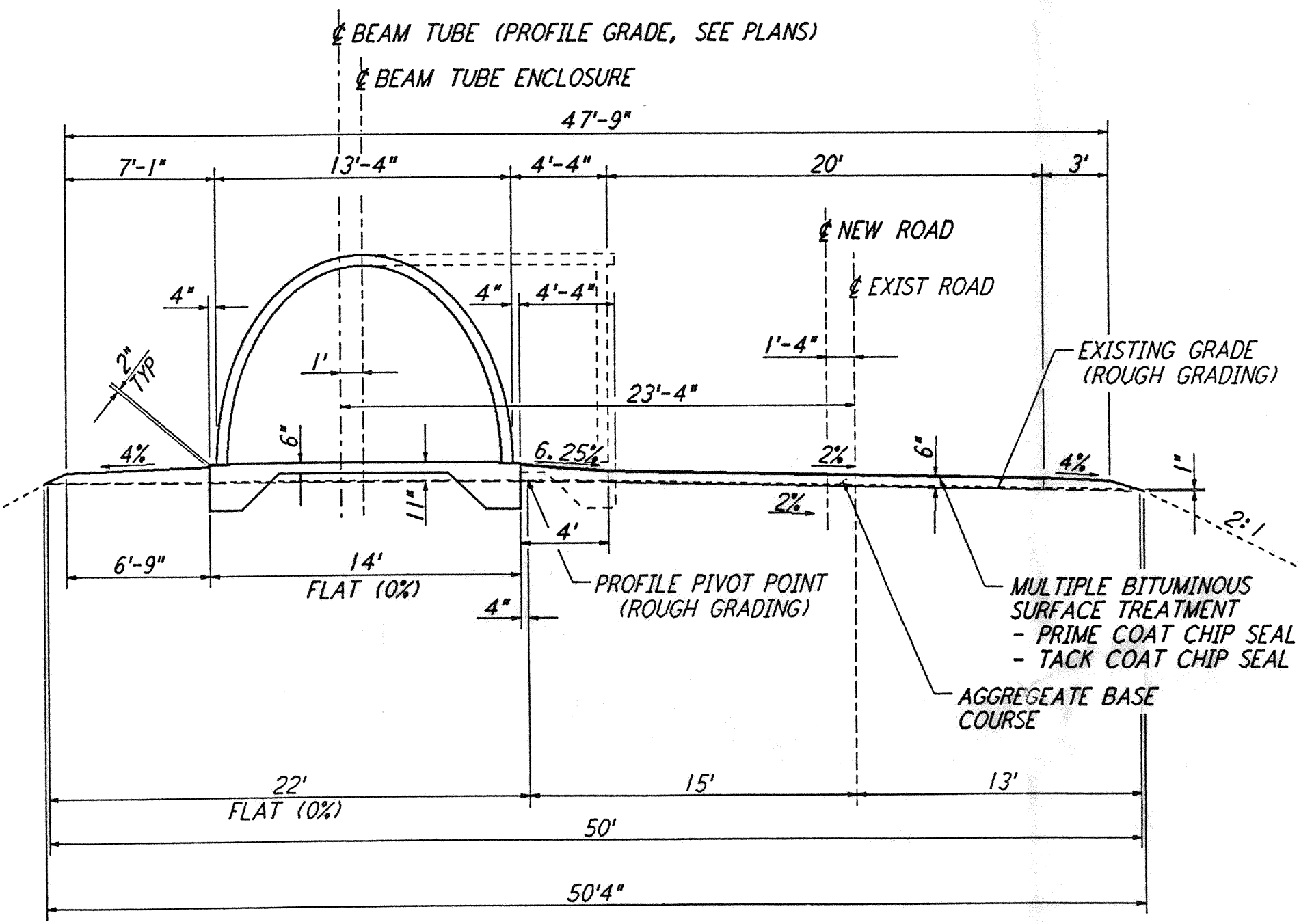
SOUTHWEST ARM: (SEE NOTE 5)
 STA 1+72.48 THRU STA 5+22.76
 STA 63+56.67 THRU STA 65+64.72
 STA 66+71.80 THRU STA 67+96.67
 STA 128+56.67 THRU STA 130+64.05



SECTION A (SIM)
 NOT TO SCALE
 REF: BT-C-004, BT-C-005, BT-C-011, BT-C-015, BT-C-020, BT-C-031, BT-C-035, BT-C-040

NORTHWEST ARM: STA 1+47.48 THRU STA 1+72.48
 STA 65+64.72 THRU STA 65+89.72
 STA 66+46.80 THRU STA 66+71.80
 STA 130+64.05 THRU STA 130+89.05

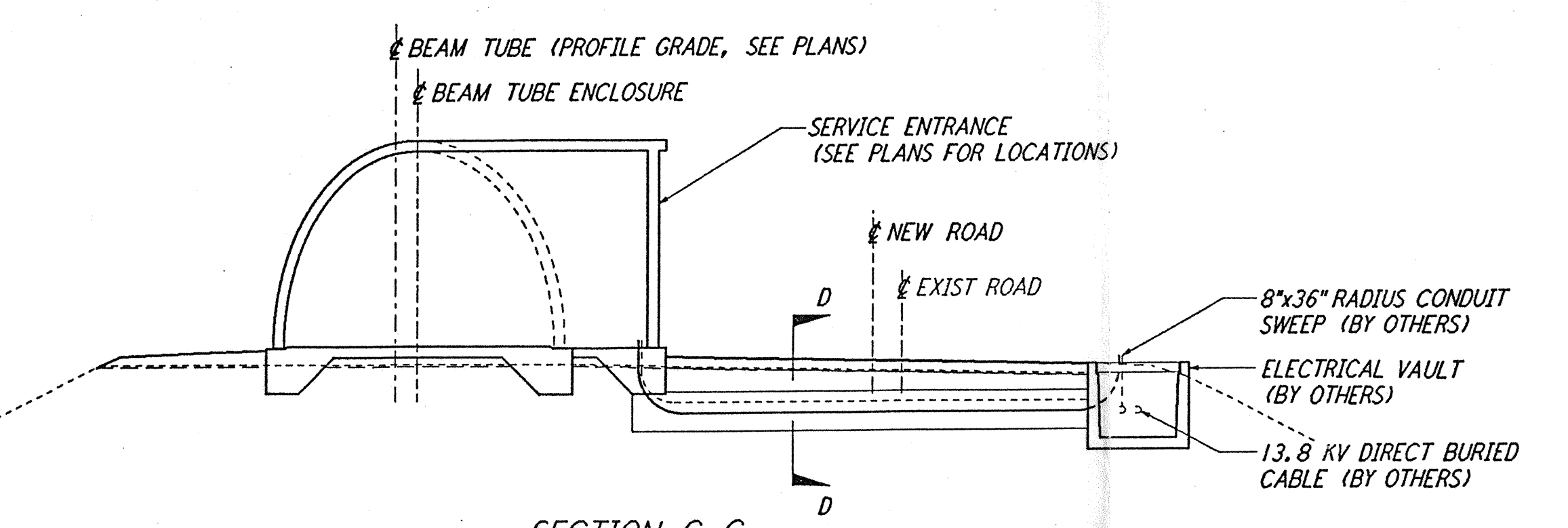
SOUTHWEST ARM: (SEE NOTE 5)
 STA 1+47.48 THRU STA 1+72.76
 STA 65+64.72 THRU STA 65+89.72
 STA 66+46.80 THRU STA 66+71.80
 STA 130+64.05 THRU STA 130+89.05



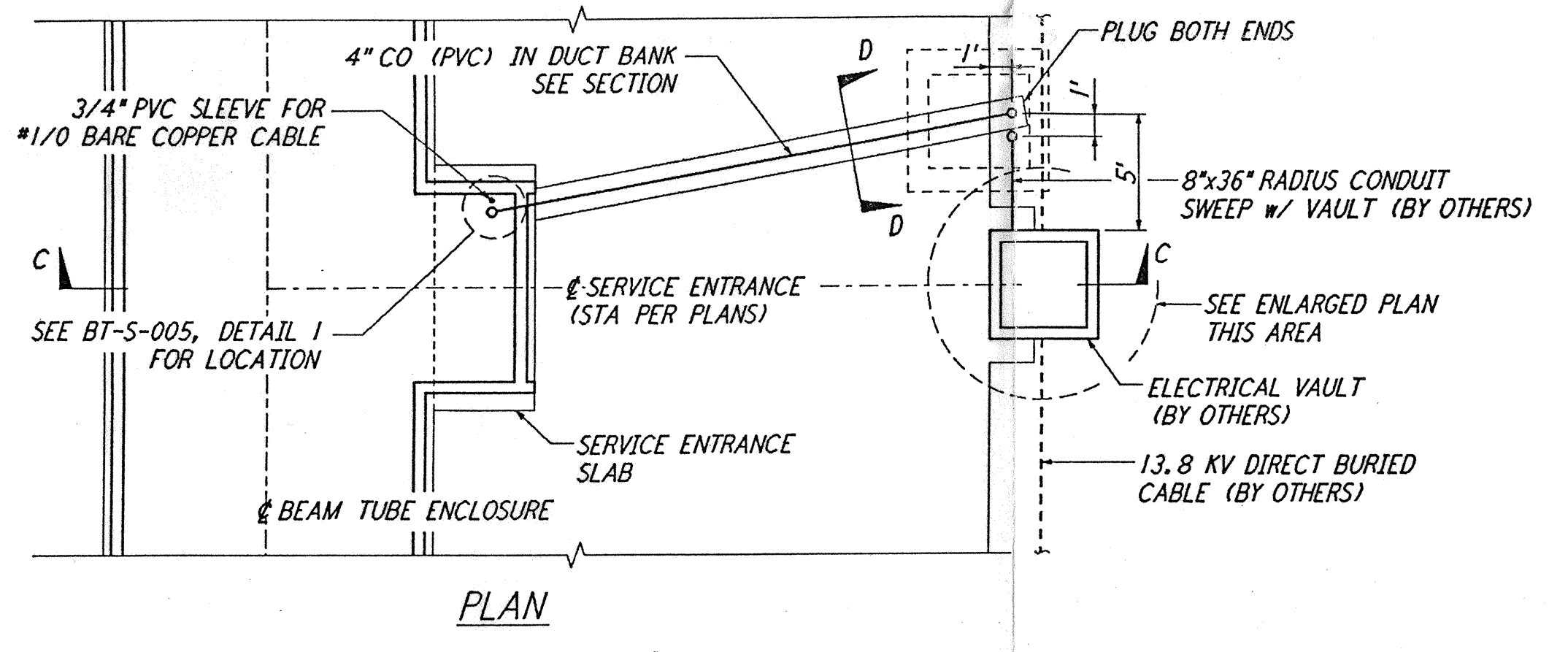
SECTION B
 NOT TO SCALE
 REF: BT-C-004, BT-C-005, BT-C-011 THRU BT-C-020, BT-C-031 THRU BT-C-040

NORTHWEST ARM: STA 6+35.00 THRU STA 63+56.67
 STA 67+96.67 THRU STA 128+56.67

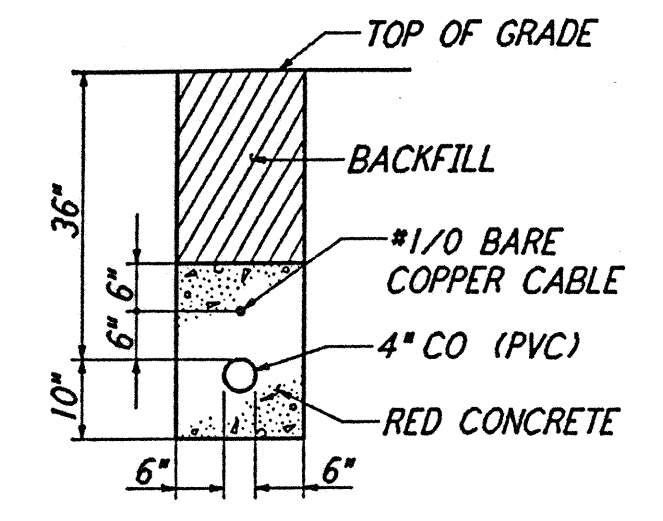
SOUTHWEST ARM: (SEE NOTE 5)
 STA 5+22.76 THRU STA 63+56.67
 STA 67+96.67 THRU STA 128+56.67



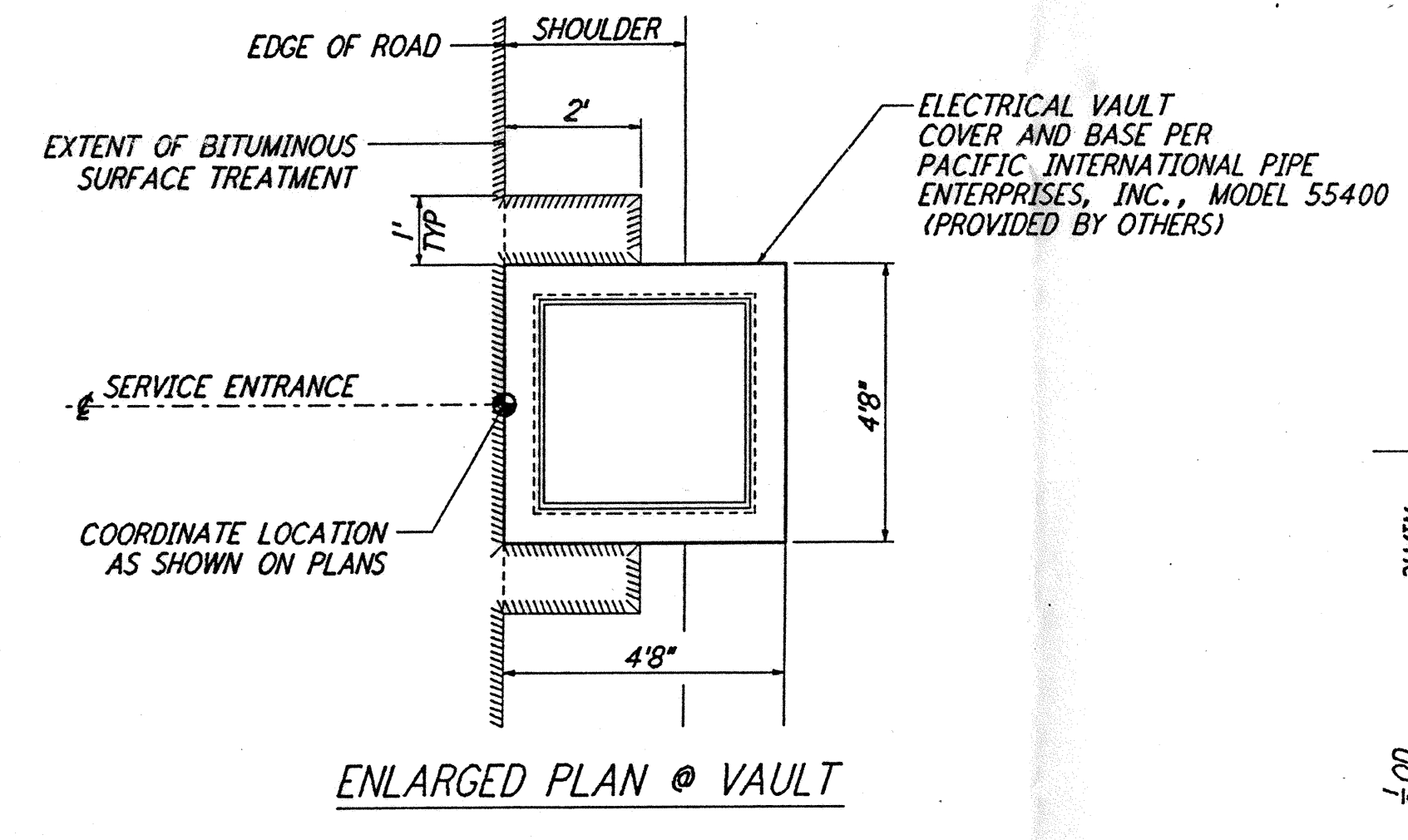
SECTION C-C
 NOTE: REFER TO SECTIONS 'A' AND 'B' FOR DIMENSIONS AND CALLOUTS NOT SHOWN ON THIS SECTION.



TYPICAL LOCATION PLAN @ SERVICE ENTRANCE FOR ELECTRICAL VAULT
 NOT TO SCALE
 REF: BT-C-004, BT-C-005, BT-C-011 THRU BT-C-014, BT-C-016 THRU BT-C-019, BT-C-031 THRU BT-C-034, BT-C-036 THRU BT-C-039

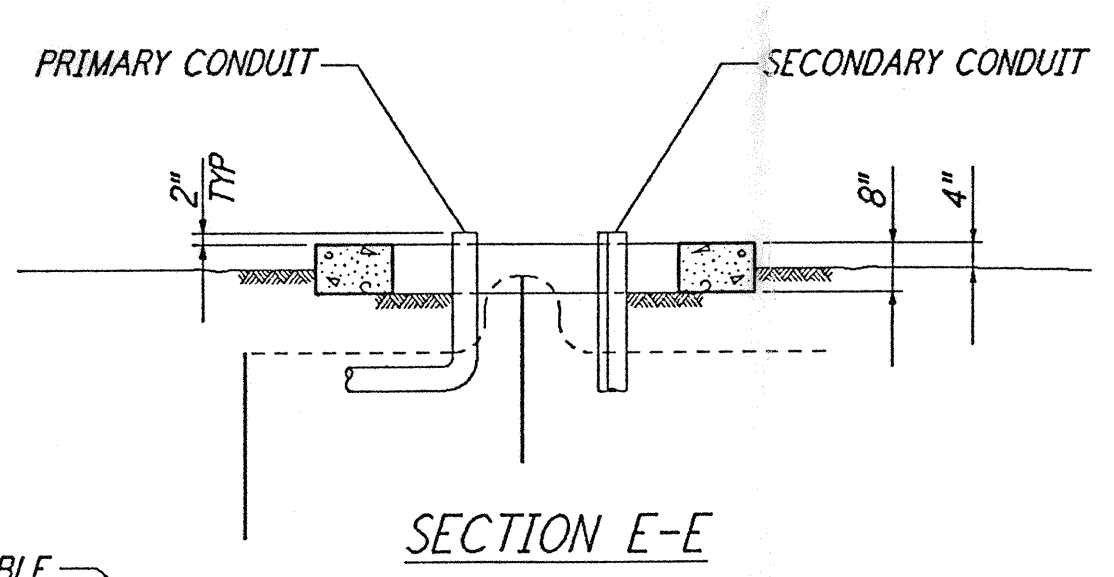


SECTION D-D

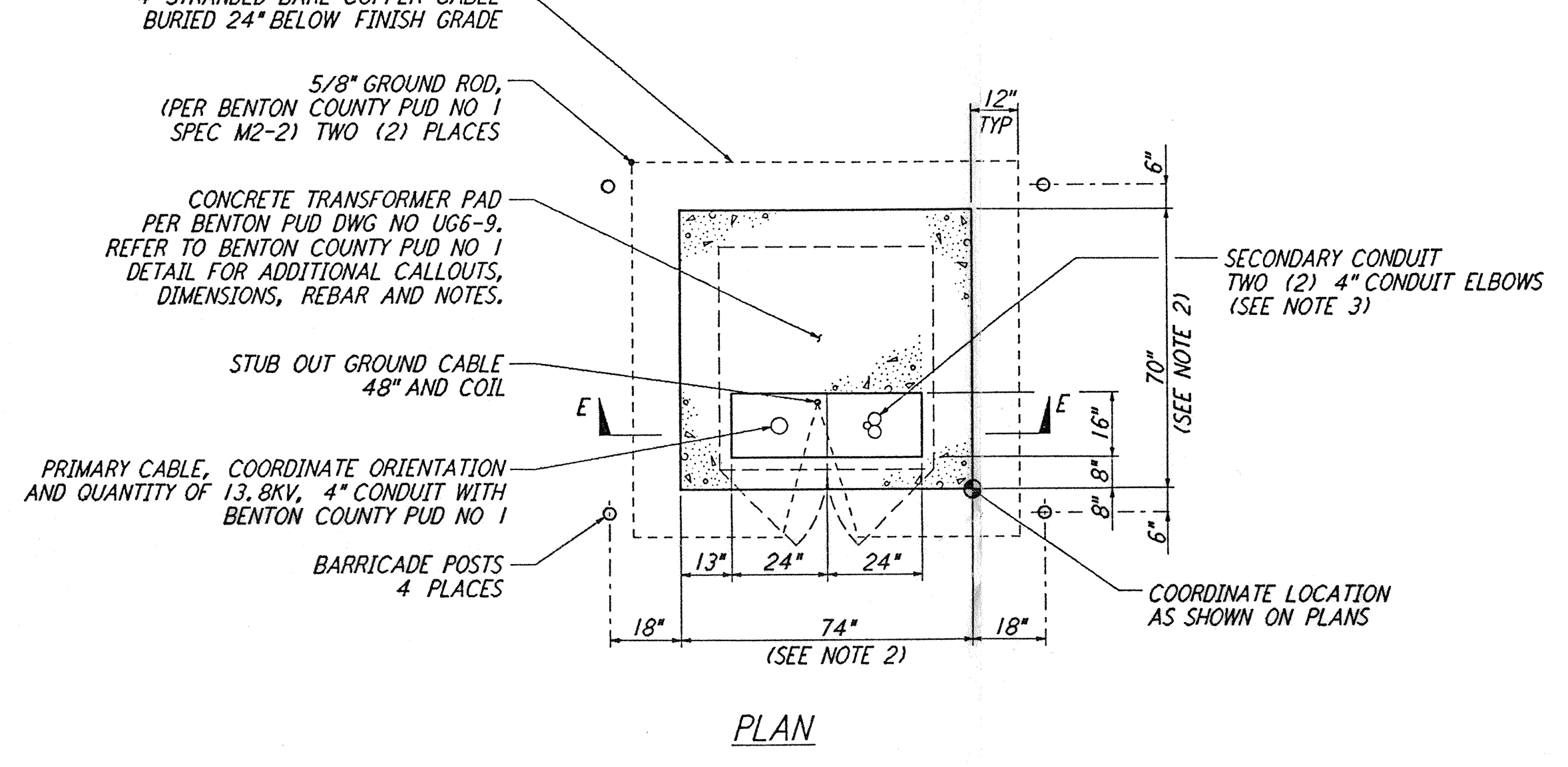


TRENCH BEDDING
 NOT TO SCALE
 REF: BT-C-004, BT-C-005, BT-C-011, BT-C-031

ID	d (MIN)
27" & SMALLER	3"

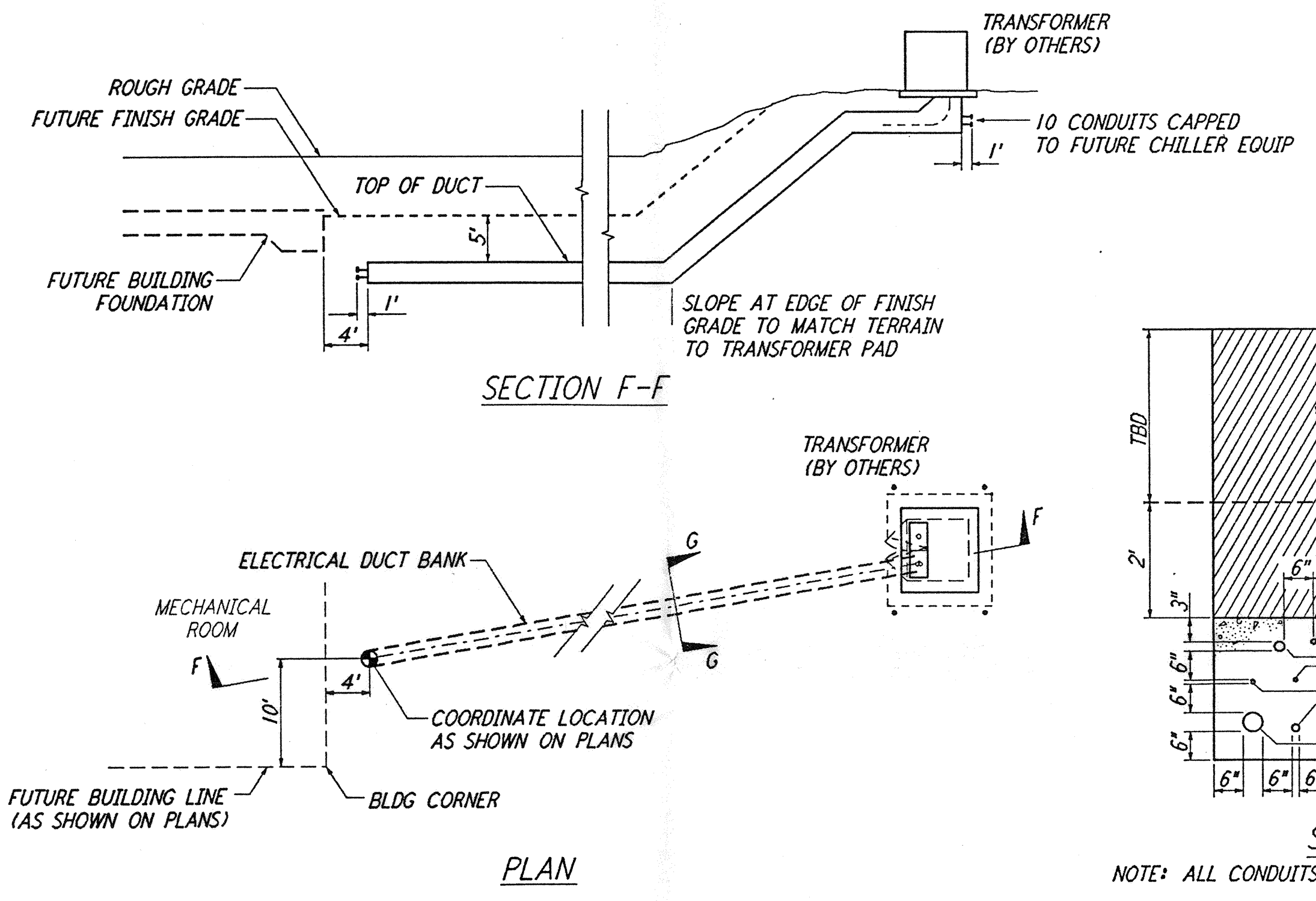


SECTION E-E



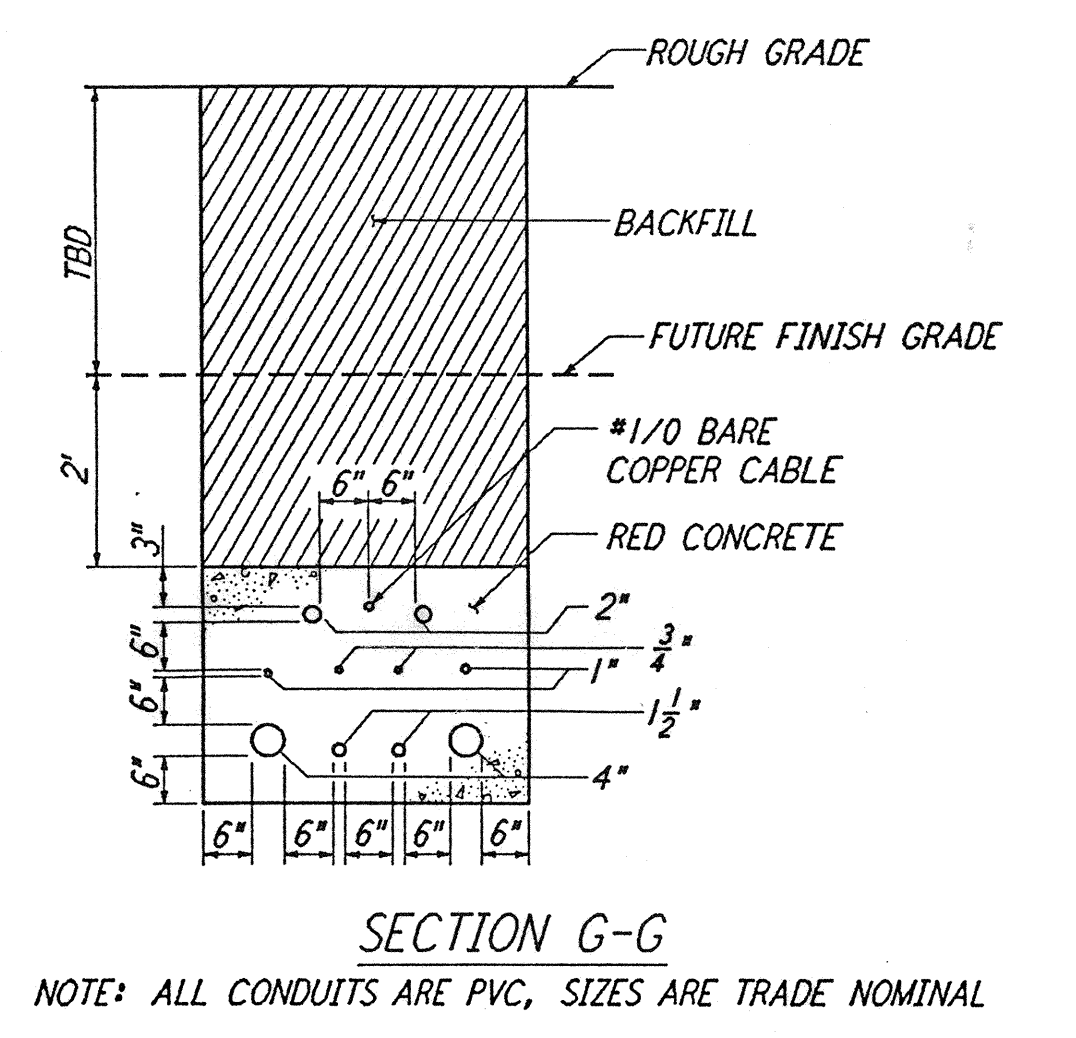
NOTE: ORIENT PAD SUCH THAT DOORS FACE TOWARDS THE BEAM TUBE EMBANKMENT

TYPICAL LOCATION PLAN FOR ELECTRICAL TRANSFORMER PAD
 NOT TO SCALE
 REF: BT-C-004, BT-C-005, BT-C-015, BT-C-020, BT-C-035, BT-C-040



SECTION F-F

TYPICAL PLAN @ MID AND END STATIONS FOR ELECTRICAL DUCT BANK
 NOT TO SCALE
 REF: BT-C-004, BT-C-015, BT-C-020, BT-C-035, BT-C-040



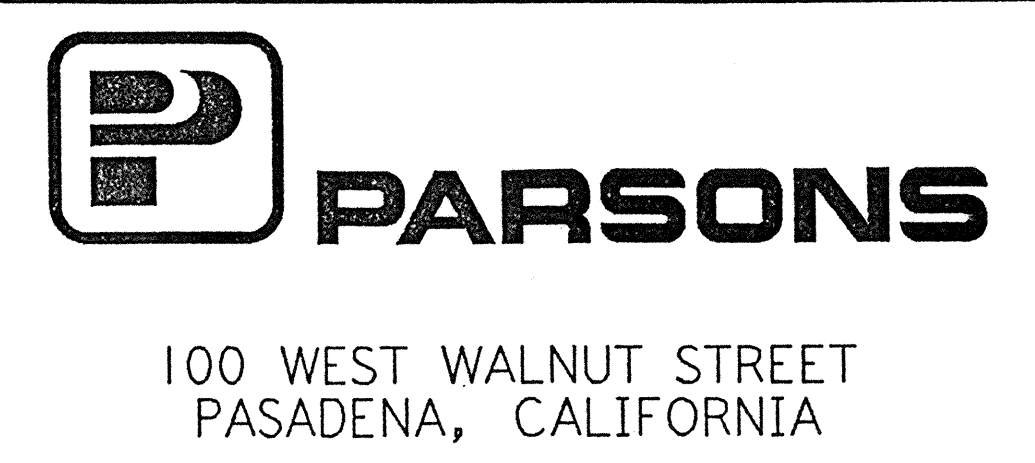
SECTION G-G

NOTE: ALL CONDUITS ARE PVC, SIZES ARE TRADE NOMINAL

DRAWING NO.	DESCRIPTION	NO.	DATE	BY	CHKD	ENGR	PROJ	DESCRIPTION

ISSUED FOR CONSTRUCTION

DRAWN	WRB	1-19-96
CHECKED	J.P.	1-16-96
ENGINEER	J.P.	1-12-96
PROJ	W.B.O.	1-19-96



LASER INTERFEROMETER GRAVITATIONAL-WAVE OBSERVATORY
 BTE SITWORK & FABRICATION - HANFORD, WA

CIVIL TYPICAL SECTIONS AND DETAILS

BT-C-004

D960164-00-0

not be reproduced, copied, loaned, exhibited, or used in any other way, except by written consent from PARSONS to the borrower.

This document and the design it covers are the property of PARSONS. They are loaned only with the borrower's expressed written agreement that they will

I:\lgo\site\lce\bt-c-004.dgz