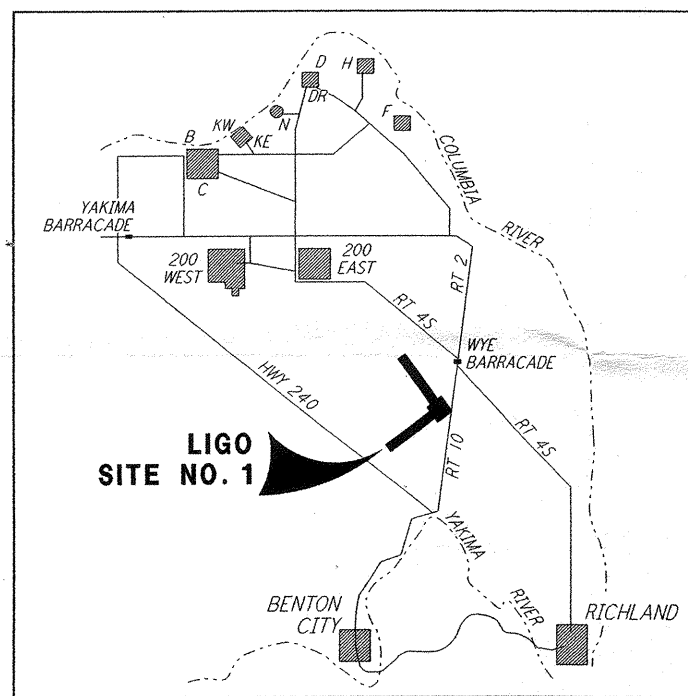
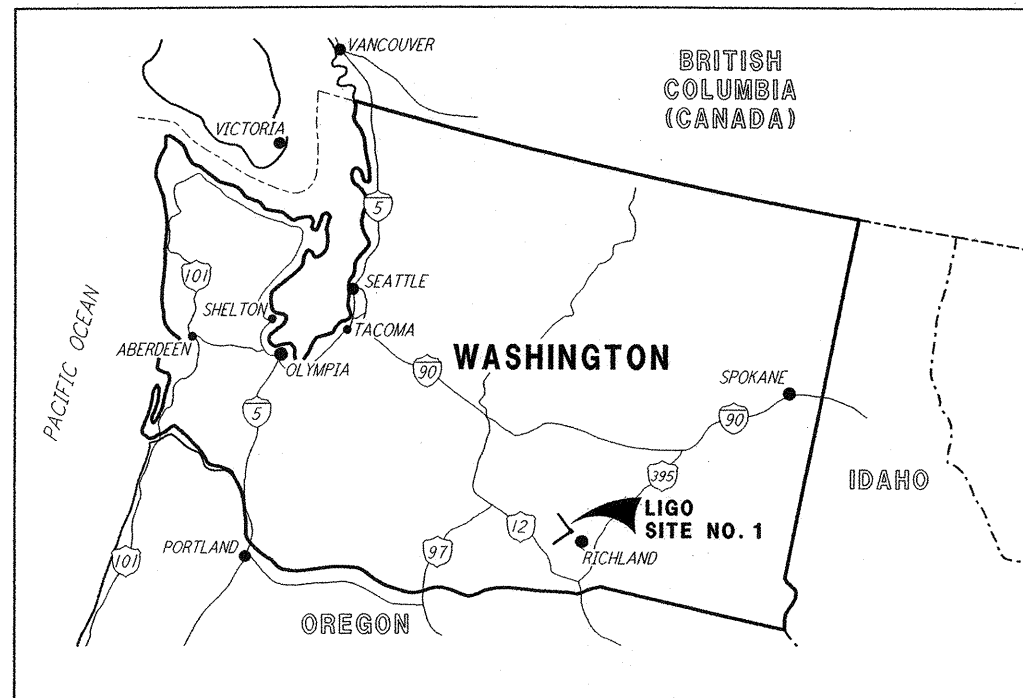


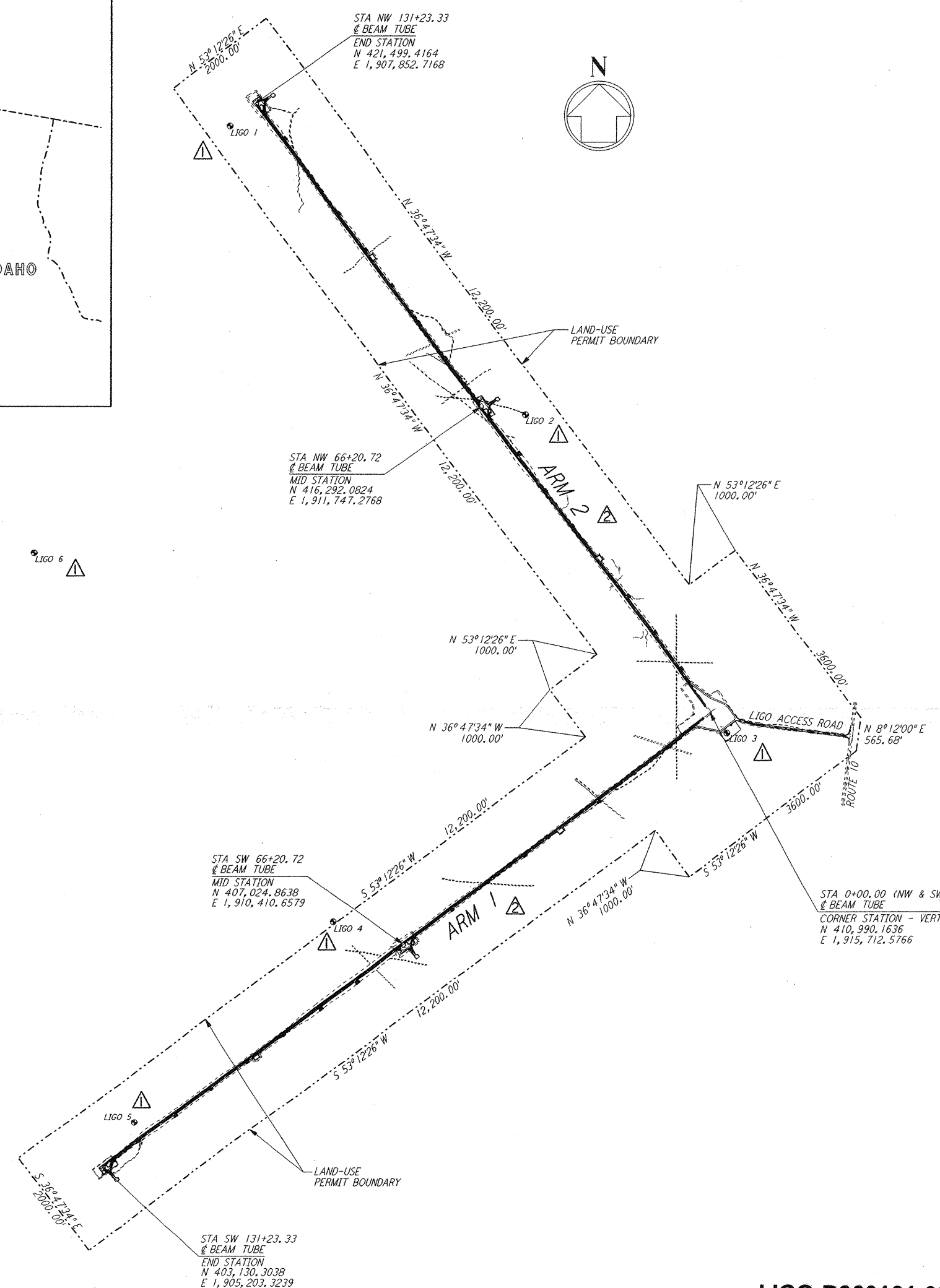
DRAWING INDEX	
SHEET NUMBER	SHEET TITLE
GENERAL	
BT-G-001	GENERAL, COVER SHEET
CIVIL	
BT-C-001	CIVIL, DRAWING INDEX, LOCATION & VICINITY MAPS
BT-C-002	CIVIL, GENERAL NOTES, LEGEND & ABBREVIATIONS
BT-C-003	CIVIL, DRAWING MATRIX
BT-C-004	CIVIL, TYPICAL SECTIONS AND DETAILS
BT-C-005	CIVIL, CORNER STATION PLAN
BT-C-011	CIVIL, NORTHWEST ARM, PLAN AND PROFILE, STA 0+00 TO 14+00
BT-C-012	CIVIL, NORTHWEST ARM, PLAN AND PROFILE, STA 14+00 TO 28+00
BT-C-013	CIVIL, NORTHWEST ARM, PLAN AND PROFILE, STA 28+00 TO 42+00
BT-C-014	CIVIL, NORTHWEST ARM, PLAN AND PROFILE, STA 42+00 TO 56+00
BT-C-015	CIVIL, NORTHWEST ARM, PLAN AND PROFILE, STA 56+00 TO 70+00
BT-C-016	CIVIL, NORTHWEST ARM, PLAN AND PROFILE, STA 70+00 TO 84+00
BT-C-017	CIVIL, NORTHWEST ARM, PLAN AND PROFILE, STA 84+00 TO 98+00
BT-C-018	CIVIL, NORTHWEST ARM, PLAN AND PROFILE, STA 98+00 TO 112+00
BT-C-019	CIVIL, NORTHWEST ARM, PLAN AND PROFILE, STA 112+00 TO 126+00
BT-C-020	CIVIL, NORTHWEST ARM, PLAN AND PROFILE, STA 126+00 TO 133+00
BT-C-021	CIVIL, NORTHWEST ARM, MID-STATION, PLOT PLAN
BT-C-022	CIVIL, NORTHWEST ARM, MID-STATION, GRADING PLAN
BT-C-023	CIVIL, NORTHWEST ARM, MID-STATION, UTILITY PLAN
BT-C-025	CIVIL, NORTHWEST ARM, END-STATION, PLOT PLAN
BT-C-026	CIVIL, NORTHWEST ARM, END-STATION, GRADING PLAN
BT-C-027	CIVIL, NORTHWEST ARM, END-STATION, UTILITY PLAN
BT-C-031	CIVIL, SOUTHWEST ARM, PLAN AND PROFILE, STA 0+00 TO 14+00
BT-C-032	CIVIL, SOUTHWEST ARM, PLAN AND PROFILE, STA 14+00 TO 28+00
BT-C-033	CIVIL, SOUTHWEST ARM, PLAN AND PROFILE, STA 28+00 TO 42+00
BT-C-034	CIVIL, SOUTHWEST ARM, PLAN AND PROFILE, STA 42+00 TO 56+00
BT-C-035	CIVIL, SOUTHWEST ARM, PLAN AND PROFILE, STA 56+00 TO 70+00
BT-C-036	CIVIL, SOUTHWEST ARM, PLAN AND PROFILE, STA 70+00 TO 84+00
BT-C-037	CIVIL, SOUTHWEST ARM, PLAN AND PROFILE, STA 84+00 TO 98+00
BT-C-038	CIVIL, SOUTHWEST ARM, PLAN AND PROFILE, STA 98+00 TO 112+00
BT-C-039	CIVIL, SOUTHWEST ARM, PLAN AND PROFILE, STA 112+00 TO 126+00
BT-C-040	CIVIL, SOUTHWEST ARM, PLAN AND PROFILE, STA 126+00 TO 133+00
BT-C-041	CIVIL, SOUTHWEST ARM, MID-STATION, PLOT PLAN
BT-C-042	CIVIL, SOUTHWEST ARM, MID-STATION, GRADING PLAN
BT-C-043	CIVIL, SOUTHWEST ARM, MID-STATION, UTILITY PLAN
BT-C-045	CIVIL, SOUTHWEST ARM, END-STATION, PLOT PLAN
BT-C-046	CIVIL, SOUTHWEST ARM, END-STATION, GRADING PLAN
BT-C-047	CIVIL, SOUTHWEST ARM, END-STATION, UTILITY PLAN
BT-C-051	CIVIL, SITEMARK DETAILS
BT-C-052	CIVIL, GRADING SECTIONS & DETAILS
STRUCTURAL	
BT-S-001	STRUCTURAL, GENERAL NOTES, ABBREVIATIONS & LEGEND
BT-S-002	STRUCTURAL, KEY PLAN OF BEAM TUBE ENCLOSURE & PARTIAL ENLARGED PLANS
BT-S-003	STRUCTURAL, BEAM TUBE ENCLOSURE PLANS, SECTIONS & DETAILS
BT-S-004	STRUCTURAL, KEY PLAN OF BEAM TUBE ENCLOSURE FOUNDATION & PARTIAL ENLARGED PLANS
BT-S-005	STRUCTURAL, BEAM TUBE ENCLOSURE, SECTIONS & DETAILS, SHEET 1
BT-S-006	STRUCTURAL, BEAM TUBE ENCLOSURE, SECTIONS & DETAILS, SHEET 2
BT-S-601	STRUCTURAL, GENERAL NOTES, ABBREVIATIONS & LEGEND
BT-S-602	STRUCTURAL, STANDARD, CONCRETE DETAILS SHEET 1
BT-S-603	STRUCTURAL, STANDARD, CONCRETE DETAILS SHEET 2
BT-S-604	STRUCTURAL, MID STATION "B" & END STATION "B", FOUNDATION PLANS
BT-S-605	STRUCTURAL, MID & END STATIONS "B", AIR HANDLING UNIT ENCLOSURE PLANS
BT-S-606	STRUCTURAL, MID & END STATIONS "B", AIR HANDLING UNIT ENCLOSURE ELEV & SECTS
BT-S-607	STRUCTURAL, MID AND END STATIONS "B", FOUNDATION SCHEDULE AND DETAILS
BT-S-608	STRUCTURAL, FOUNDATION SECTIONS & DETAILS
ELECTRICAL	
BT-E-601	ELECTRICAL, MID & END STATION, GROUNDING PLAN
BT-E-602	ELECTRICAL, MID & END STATION, UNDERGROUND PLAN
BT-E-603	ELECTRICAL, GROUNDING DETAILS, SHEET 1
BT-E-604	ELECTRICAL, GROUNDING DETAILS, SHEET 2
PLUMBING	
BT-P-601	PLUMBING, MID & END STATIONS "B", UNDERGROUND PLAN
BT-P-602	PLUMBING, MID & END STATIONS "B", RISER DIAGRAM & SCHEMATICS



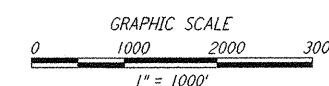
COORDINATE TABLE & ELEVATIONS FOR LIGO GPS POINTS

GPS POINT	COORDINATES		ELEVATION
	NORTH	EAST	
LIGO 1	421113.464	1907424.820	563.237
LIGO 2	416164.285	1912526.068	550.905
LIGO 3	410647.803	1916004.584	542.532
LIGO 4	407401.131	1909213.733	561.242
LIGO 5	403900.640	1905770.659	554.431
LIGO 6	413750.547	1904062.124	---

NOTE: GPS COORDINATE POINTS ARE HIGH ACCURACY, PLACED BY THE WSDOT GEOGRAPHIC SERVICES.



LIGO-D960161-03-O



NO.	DATE	BY	CHKD	ENGR	PROJ	DESCRIPTION
3	1-22-99	MEI	---	---	MDW	ISSUED FOR AS BUILT
2	4-19-96	WRB	TOM	JIB	MDW	CHANGE ORDER NO. 4
1	2-29-96	WRB	TOM	JIB	MDW	CHANGE ORDER NO. 2

ISSUED FOR CONSTRUCTION
DRAWN WRB 1-19-96
CHECKED MP 1-19-96
ENGINEER JIB 1-19-96
PROJ MDW 1-19-96

AS-BUILT DRAWINGS

PARSONS
100 WEST WALNUT STREET
PASADENA, CALIFORNIA

LIGO
CALIFORNIA INSTITUTE OF TECHNOLOGY
MASSACHUSETTS INSTITUTE OF TECHNOLOGY

LASER INTERFEROMETER
GRAVITATIONAL-WAVE OBSERVATORY
BTE SITEMARK & FABRICATION - HANFORD, WA

CIVIL
DRAWING INDEX
LOCATION & VICINITY
MAPS

AS NOTED PP150969 8094

BT-C-001

This document and the design it covers are the property of PARSONS. They are loaned only with the borrower's expressed written agreement that they will not be reproduced, copied, loaned, exhibited, or used in any other way, except by written consent from PARSONS to the borrower.

W. Jan. 21, 1999 14:49 CA:\LOT\JOB\534\0862.DWG E:\885 KAY\882\c880.dwg