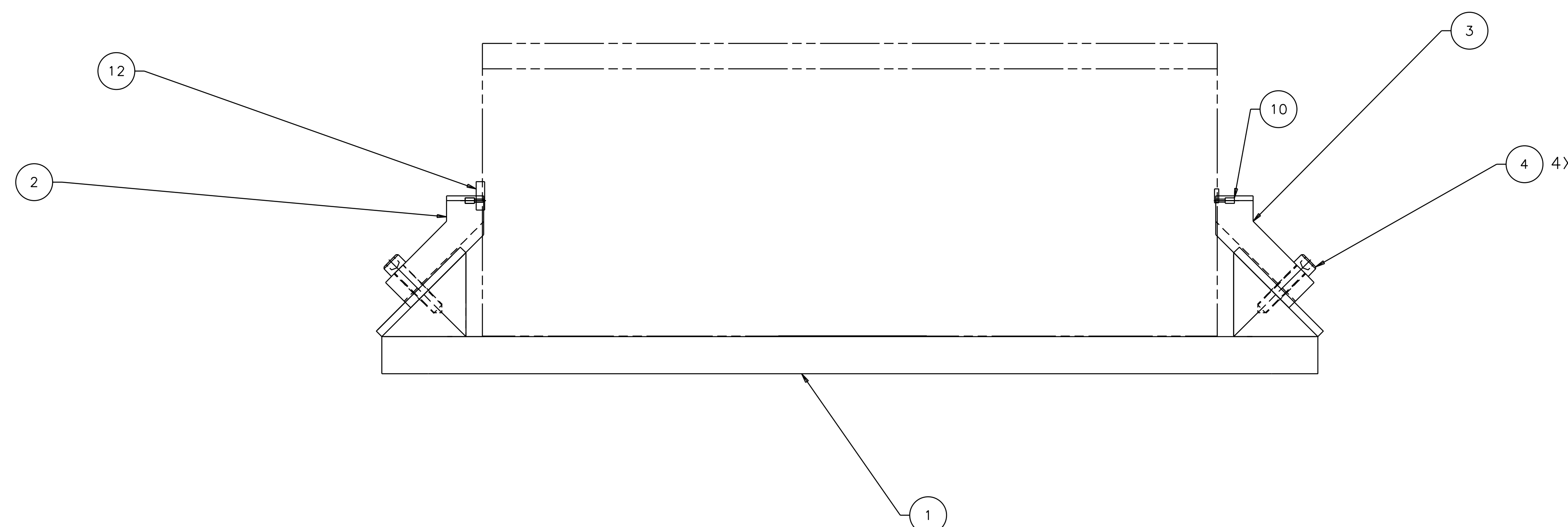
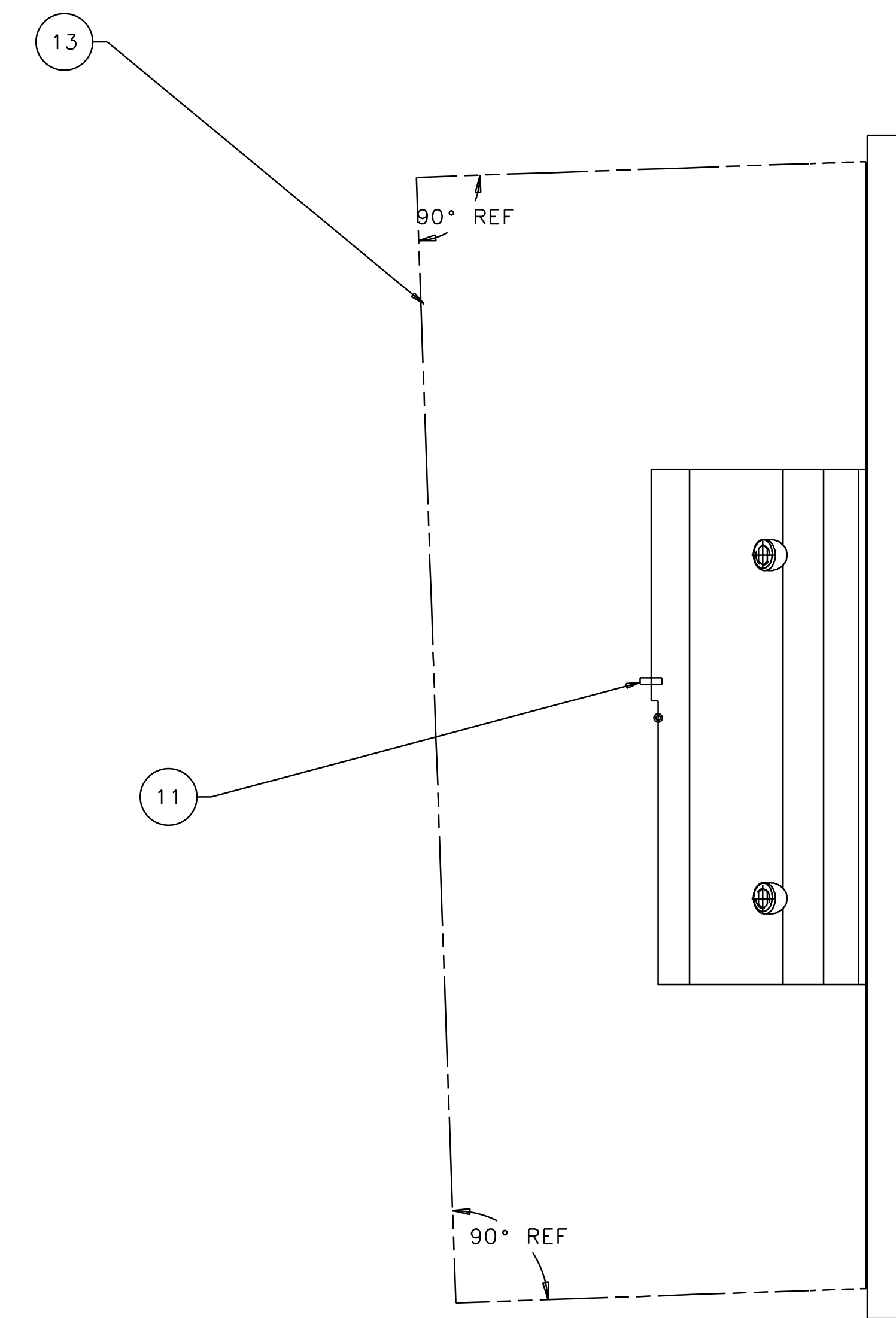
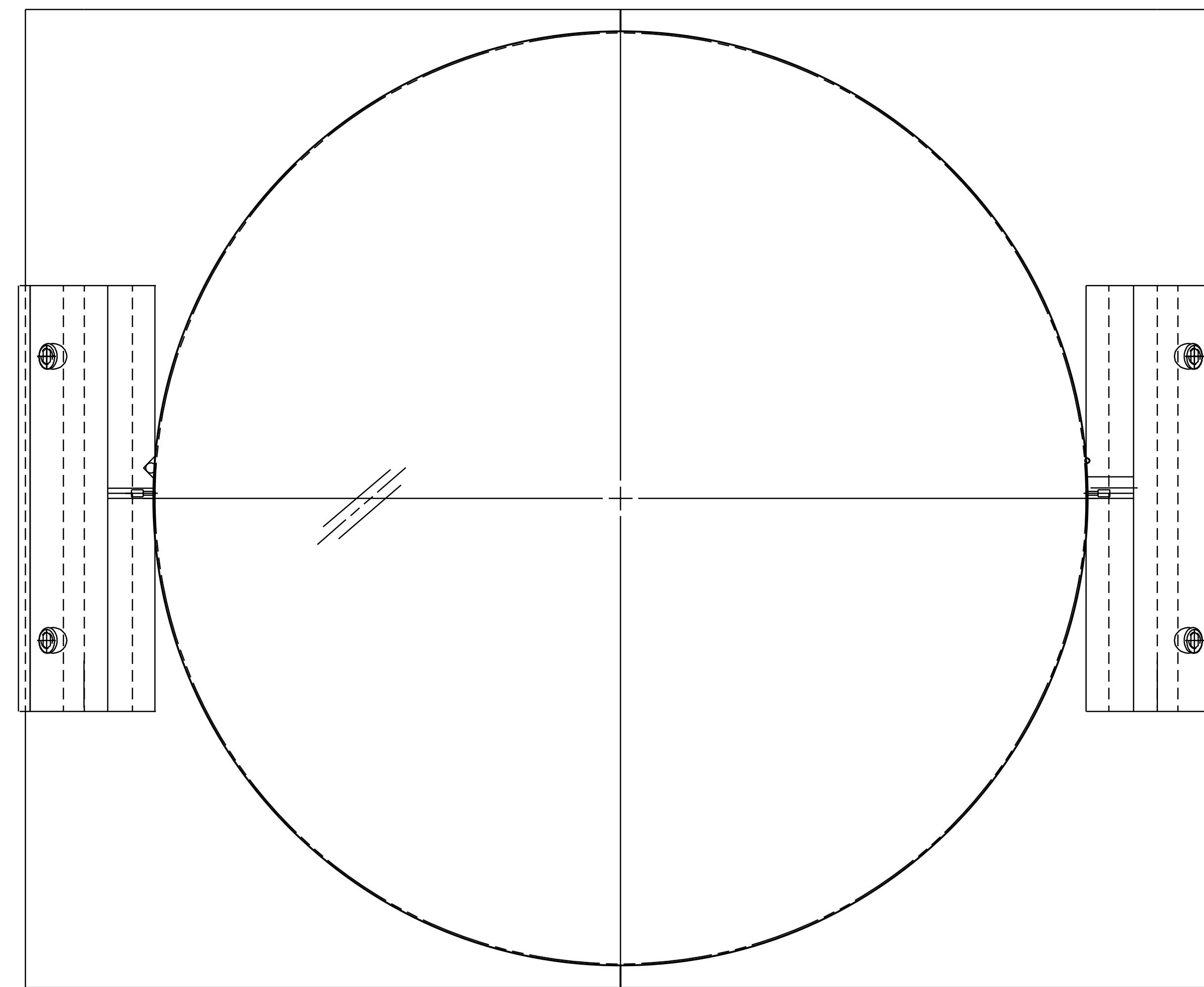


1 2 3 4 5 6 7 8

REV	DATE	DRAWN BY	CHECKED	DC	DCN/DESCRIPTION
A	2/13/98	J. Hazel			E980016/INITIAL RELEASE
B	8-14-98	J. Romie			E980227/SEE DCN

- NOTES: (UNLESS OTHERWISE SPECIFIED)
- THIS FIXTURE IS TO BE USED WITH AN OPTIC THAT IS $\phi 9.84"$ X $3.94"$ THICK ($\phi 25\text{cm}$ x 10cm THICK) WITH A 2 DEGREE, THICK-SIDE-UP ORIENTED WEDGE.
 - CLOSE SLIP FIT.
 - THE RIGHT BLOCK, TOP IS USED TO MOUNT THE GUIDE ROD AND THE LEFT BLOCK, TOP IS USED TO MOUNT THE WIRE STANDOFF.
 - USE OF THIS FIXTURE IS COVERED IN LIGO-E970154.
 - SPECIFICATIONS COVERING THE FABRICATION OF THIS ASSEMBLY ARE DETAILED IN LIGO-E970155, THE LARGE OPTIC SUSPENSION (LOS) FIXTURES AND COMPONENTS FABRICATION SPECIFICATION.



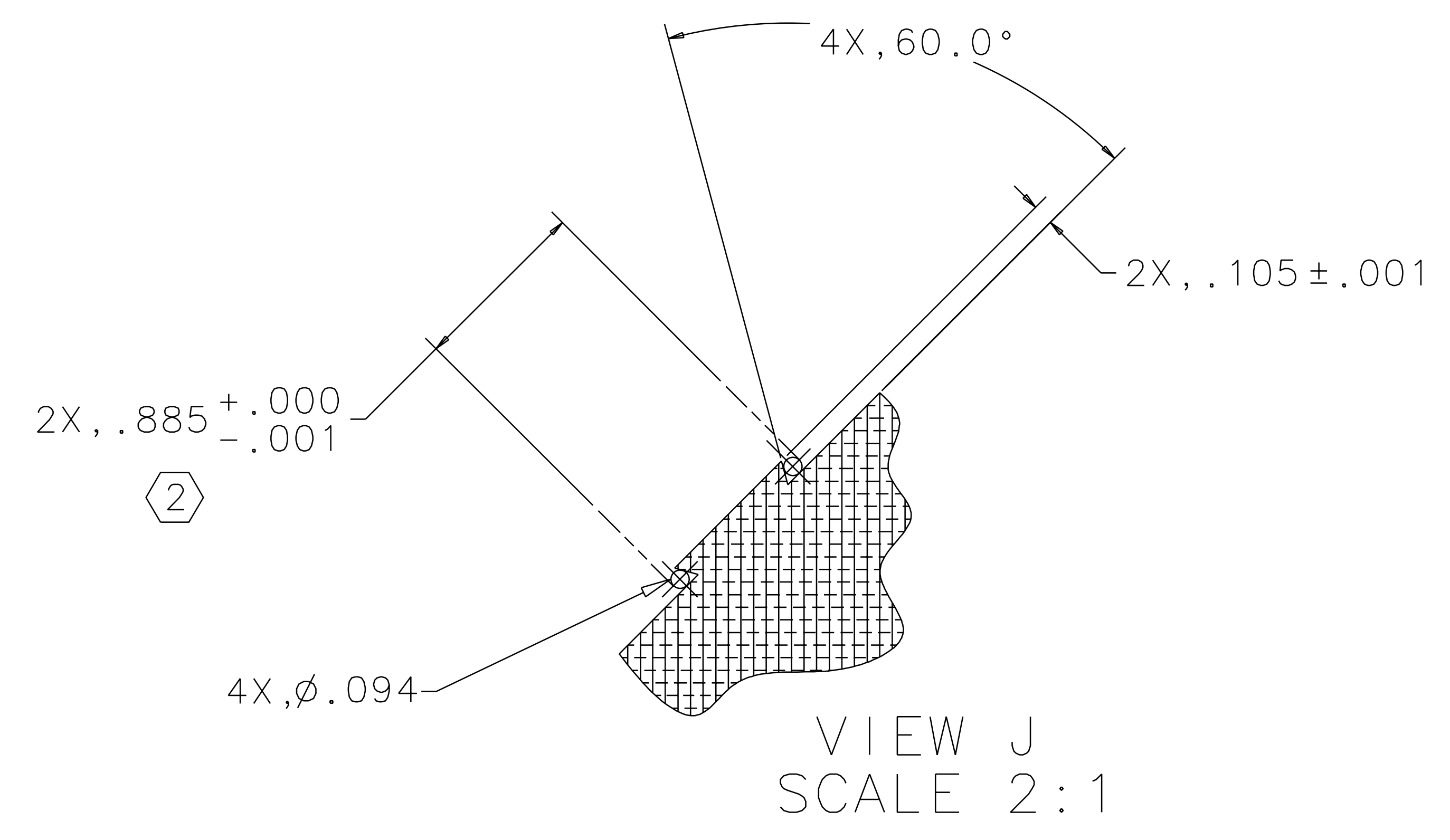
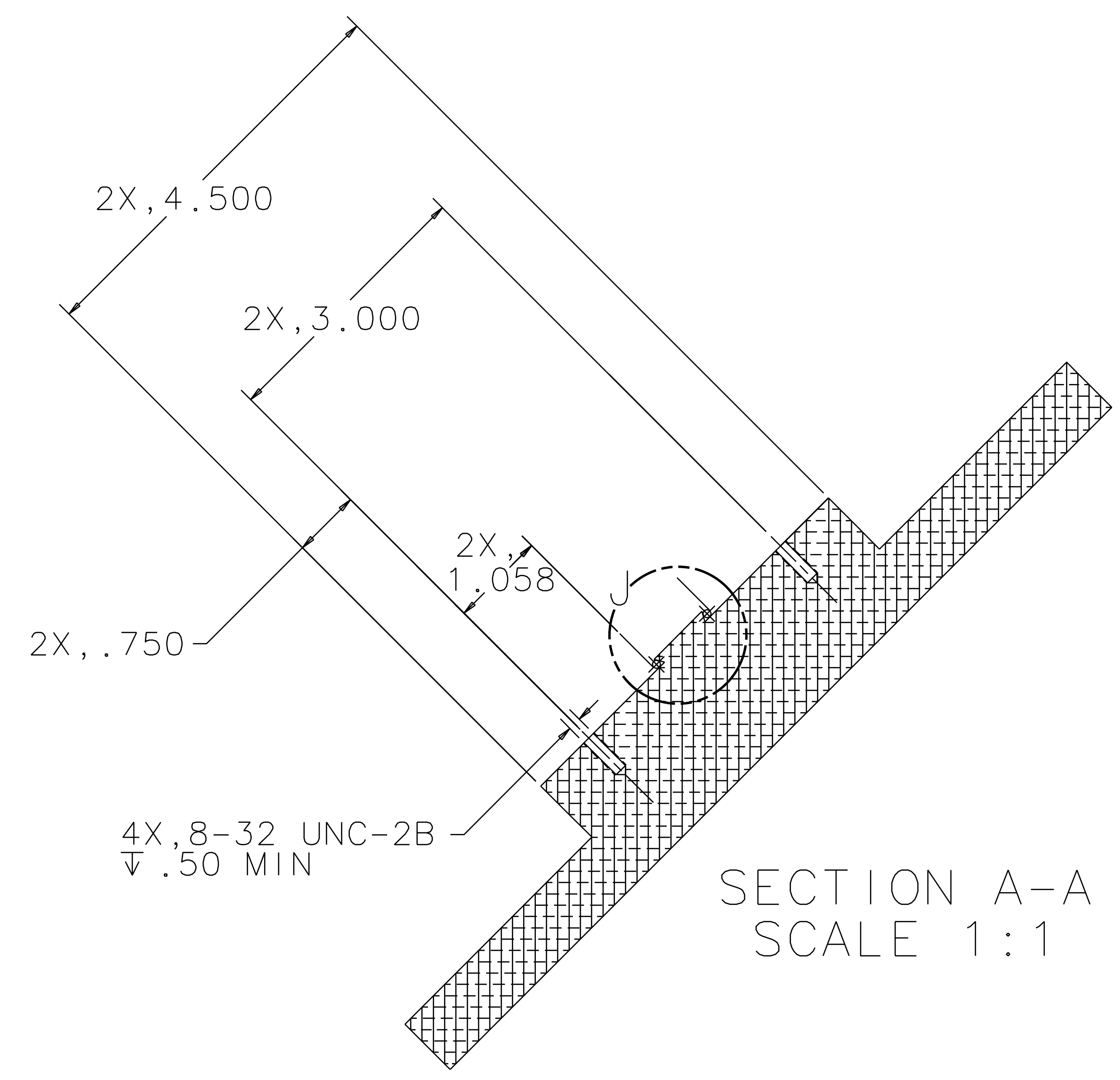
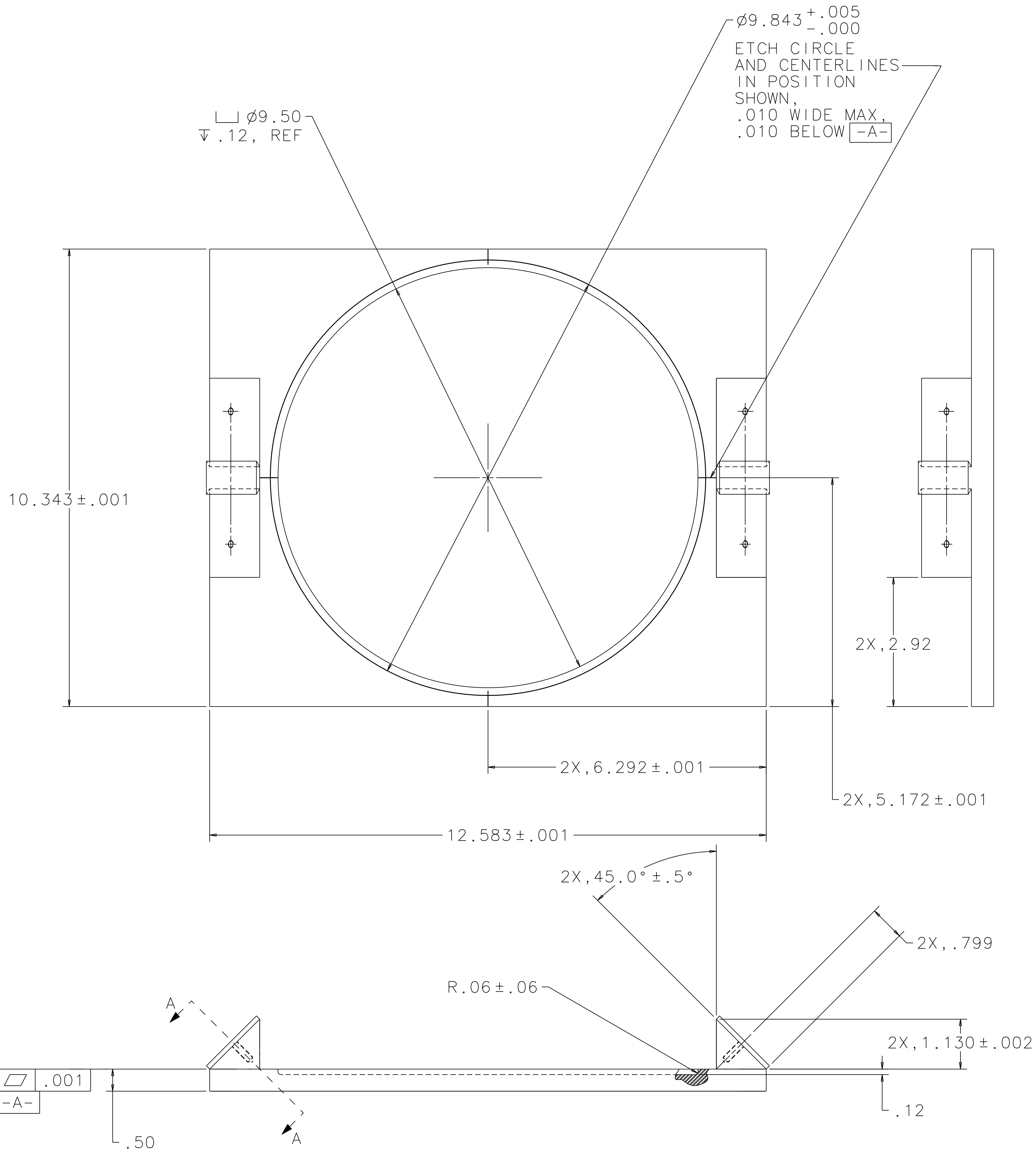
REF	QTY	PART OR IDENTIFYING NO	NOMENCLATURE OR DESCRIPTION	MATERIAL SPECIFICATION	ITEM NO
REF			OPTIC		13
REF			WIRE STANDOFF		12
REF			GUIDE ROD		11
REF			MAGNET/STANDOFF ASSEMBLY		10
					9
					8
					7
					6
					5
4			SCREW_SHCS, #8-32 x .75	STAINLESS STEEL	4
1			RIGHT BLOCK, TOP		3
1			LEFT BLOCK, TOP		2
1			BASE PLATE		1

UNLESS OTHERWISE SPECIFIED DIMENSIONS ARE IN INCHES		APPROVALS		DATE	LIGO CALIFORNIA INSTITUTE OF TECHNOLOGY MASSACHUSETTS INSTITUTE OF TECHNOLOGY	
TOLERANCES ARE:	DECIMALS	ANGLES		5/96	TITLE	
FRACTIONS	0.XX±0.01	0.XXX±0.005			GUIDE ROD FIXTURE	
	0.XXX±0.005	ANGLES±0.5°				
DO NOT SCALE DRAWING						
NEXT ASSEMBLY		MATERIAL		FINISH		
D960132, D970560, D970507						
FILE LOCATION				SCALE 1/1		
/home/dcc/docs/D960147.pdf				SHEET 1 OF 3		

1 2 3 4 5 6 7 8

1 2 3 4 5 6 7 8

REV	DATE	DRAWN BY	CHECKED	DCN	DCN/DESCRIPTION
A	2/13/98	J. Hazel			E980016/INITIAL RELEASE
B	8-14-98	J. Romie			E980227/SEE DCN



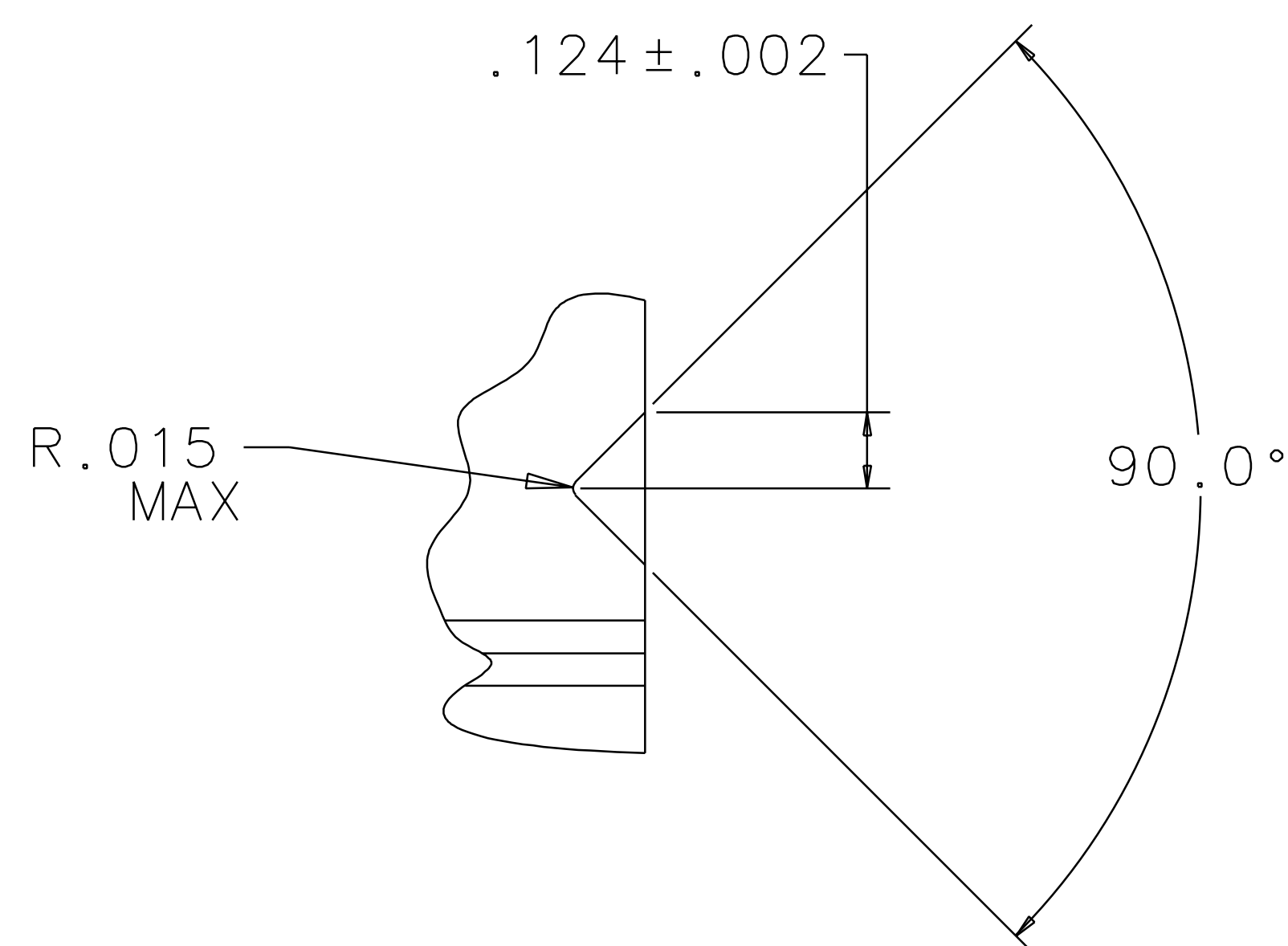
BASE PLATE
MATERIAL: 6061-T6 ALUM

QTY REQD	PART OR IDENTIFYING NO	NOMENCLATURE OR DESCRIPTION	MATERIAL SPECIFICATION	ITEM NO.
UNLESS OTHERWISE SPECIFIED DIMENSIONS ARE IN INCHES				
TOLERANCES ARE:				
FRACTIONS	DECIMALS	ANGLES		
0.XX \pm 0.01	0.XXX \pm 0.005	ANGLES \pm 0.5°		
DO NOT SCALE DRAWING				
APPROVALS		DATE	LIGO CALIFORNIA INSTITUTE OF TECHNOLOGY MASSACHUSETTS INSTITUTE OF TECHNOLOGY	
DRAWN J. Hazel		5/96	TITLE GUIDE ROD FIXTURE	
CHECKED			SIZE E D960147	
NEXT ASSEMBLY		MATERIAL	SCALE 1/1	
FILE LOCATION		FINISH	SHEET 2 OF 3	

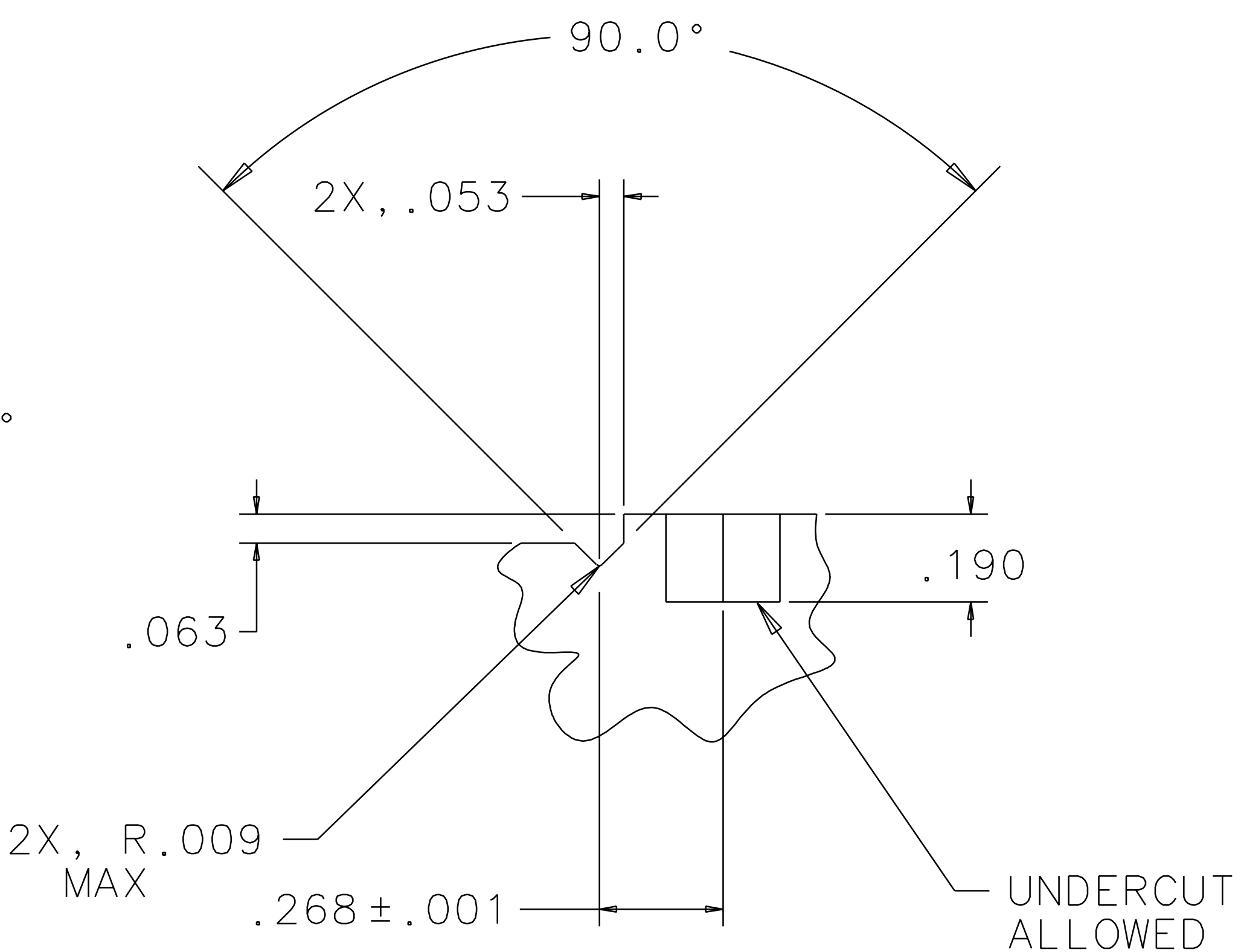
1 2 3 4 5 6 7 8

1 2 3 4 5 6 7 8

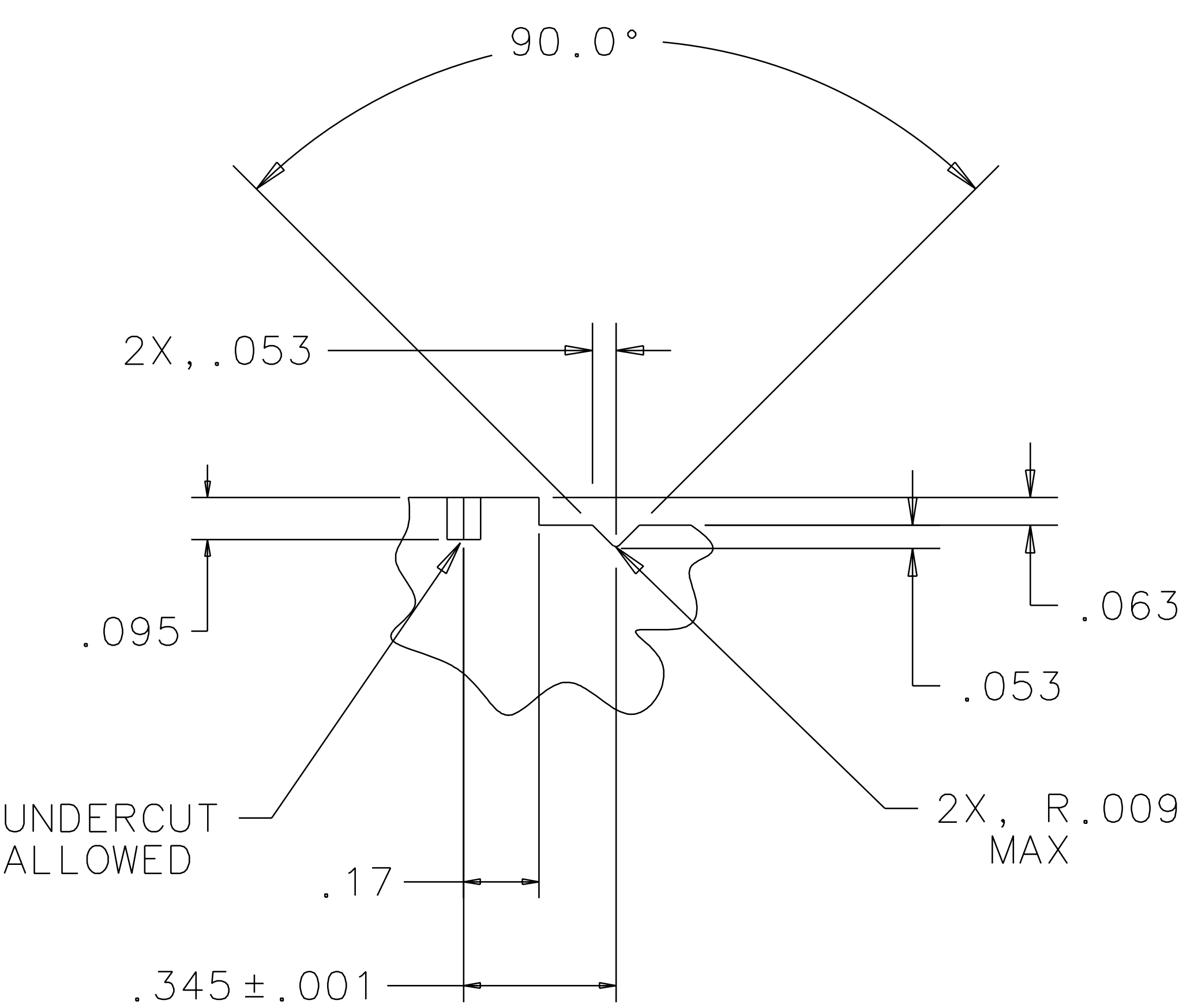
REV	DATE	DRAWN BY	CHECKED	DCC	DCN/DESCRIPTION
A	2/13/98	J. Hozel			E980016/INITIAL RELEASE
B	8-14-98	J. Ronie			E980027/SEE DCN



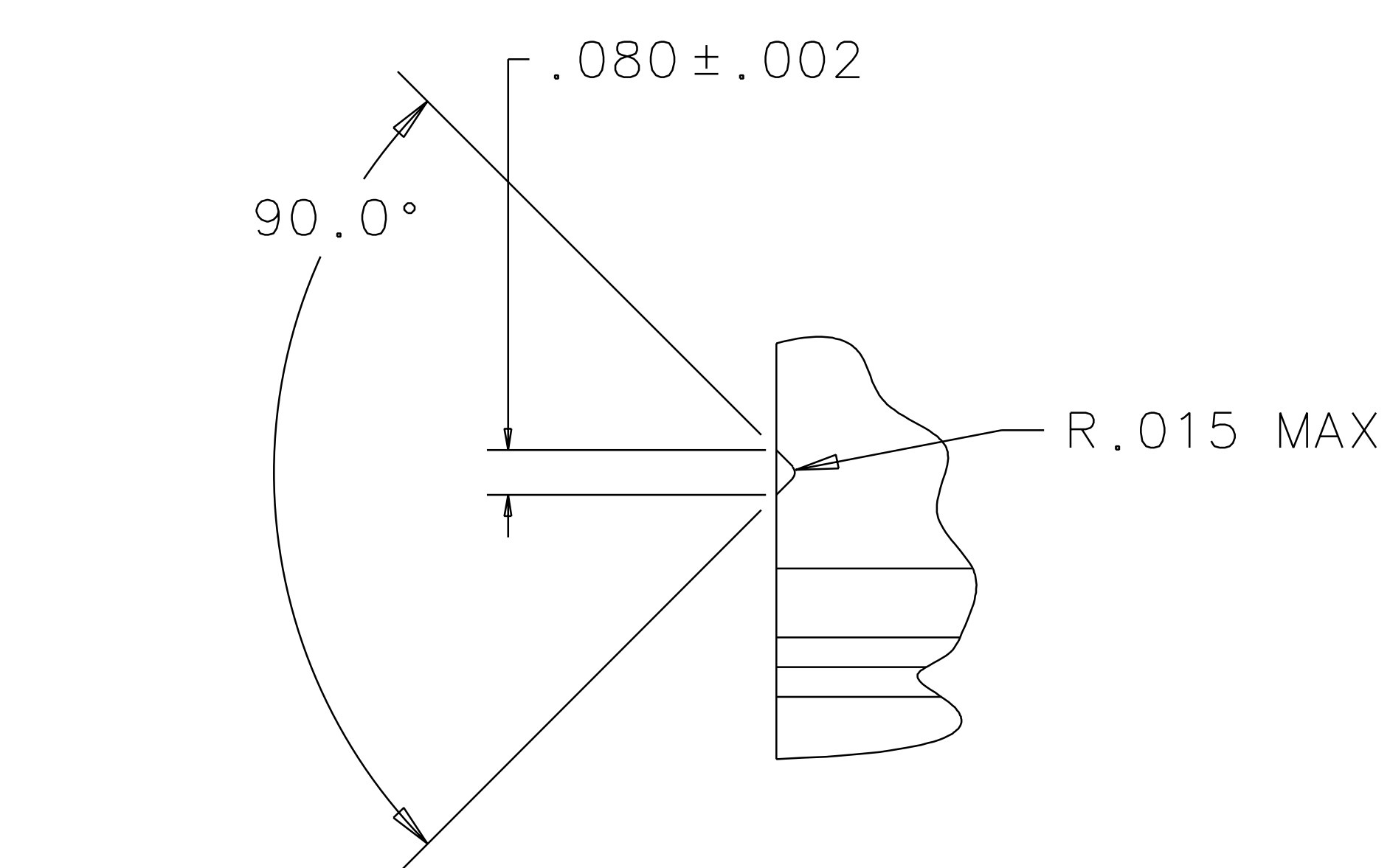
VIEW C
SCALE 4:1



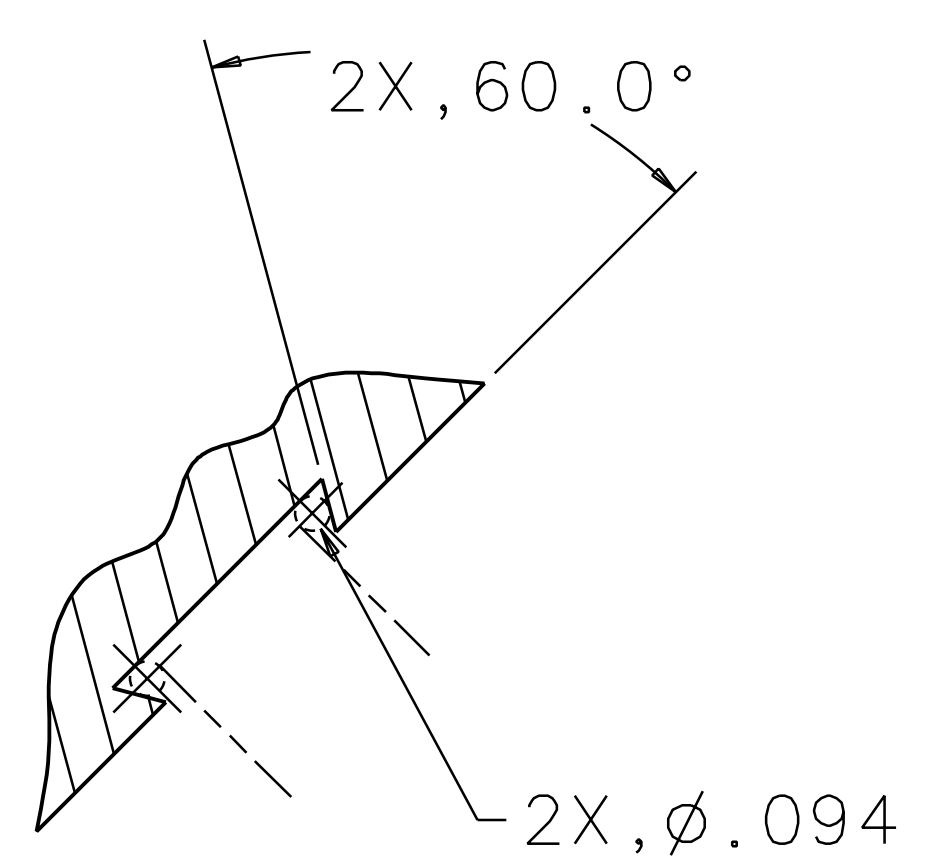
VIEW D
SCALE 4:1



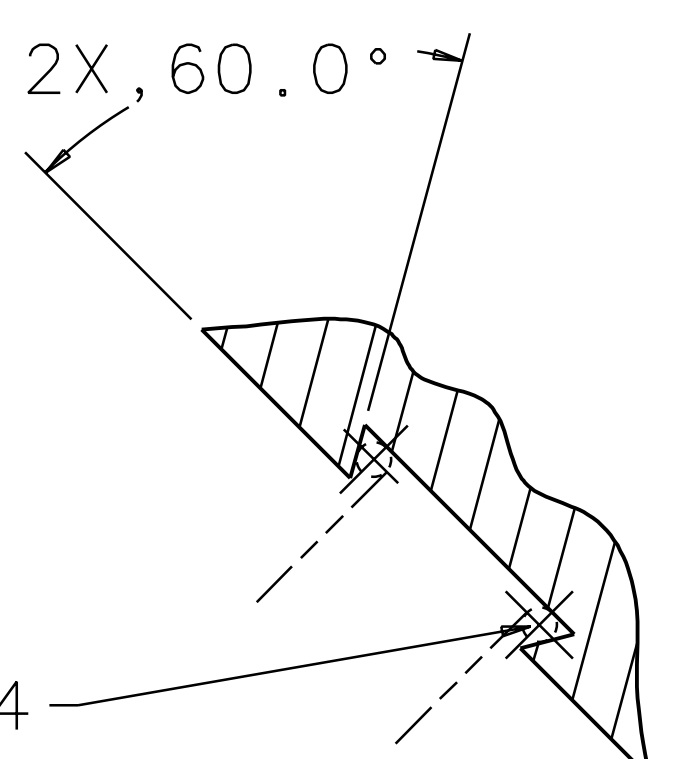
VIEW H
SCALE 4:1



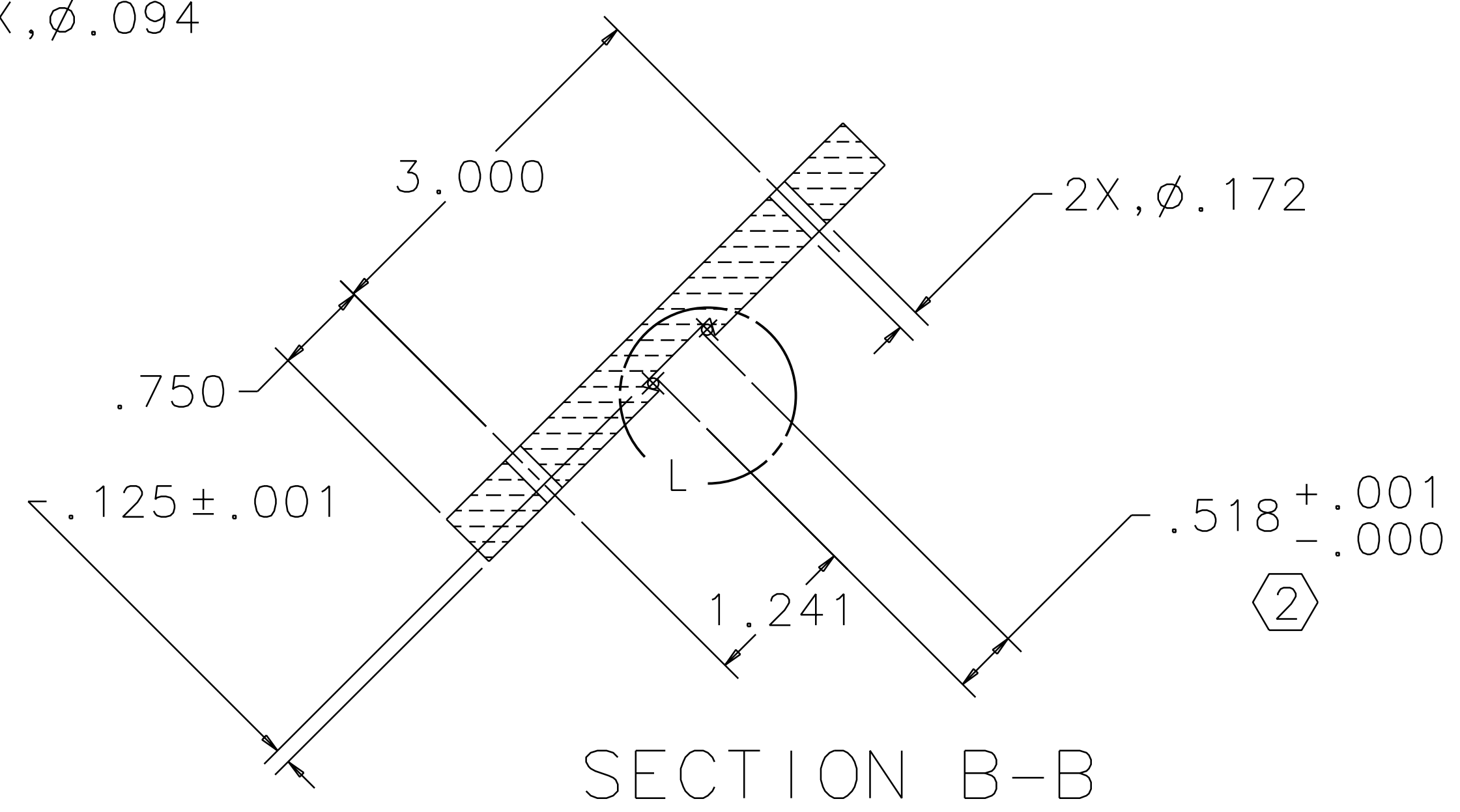
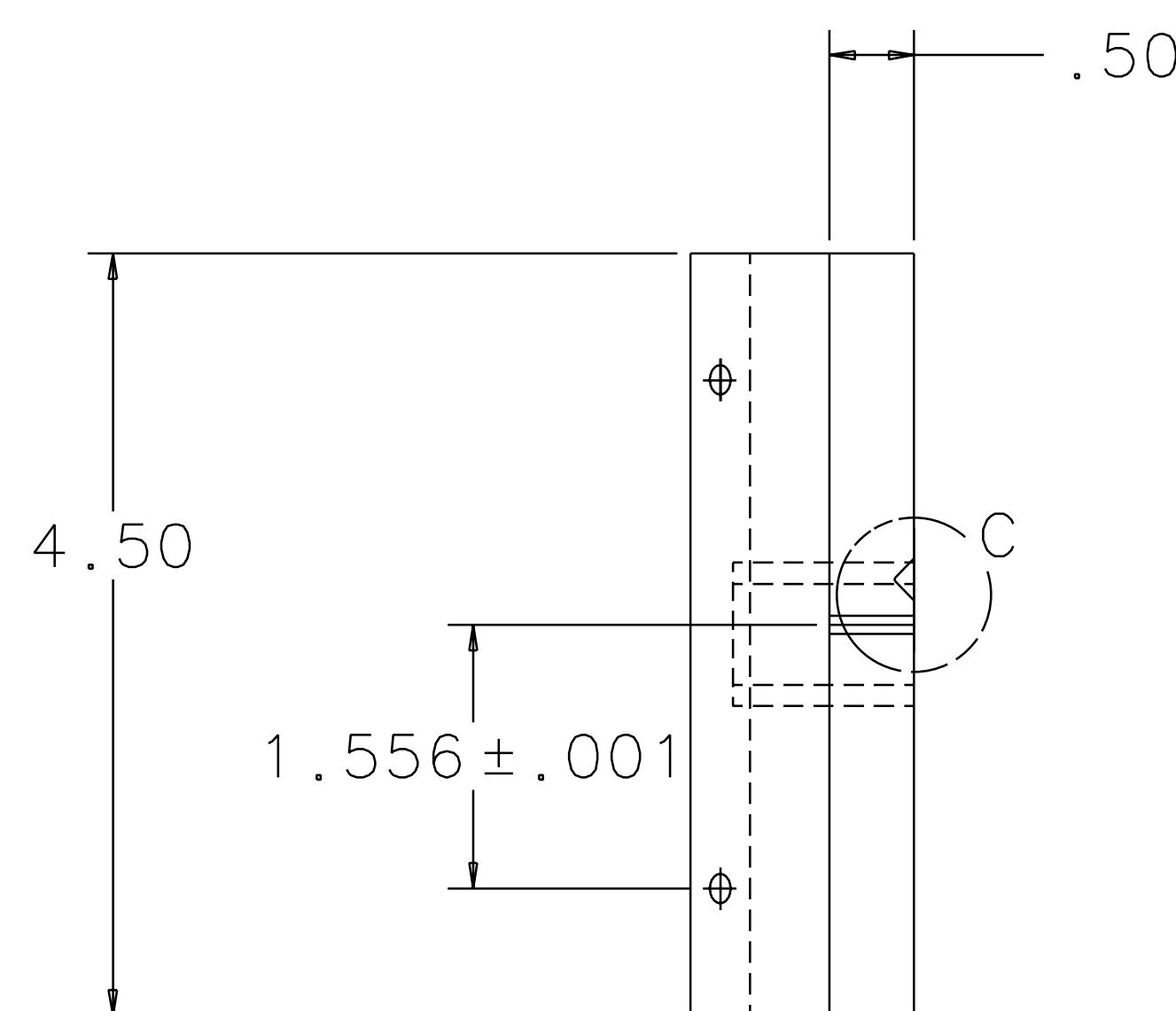
VIEW G
SCALE 4:1



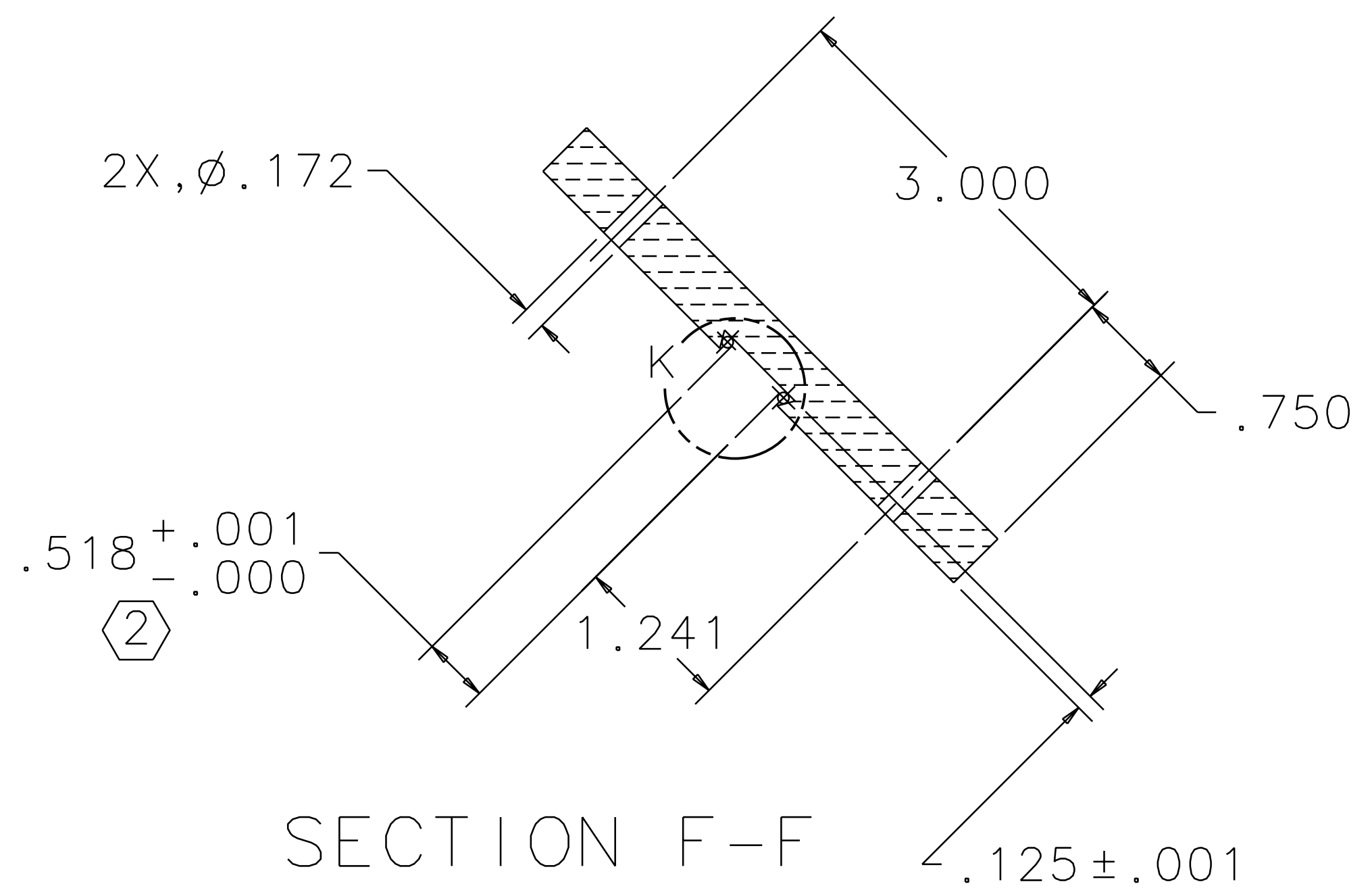
VIEW L
SCALE 2:1



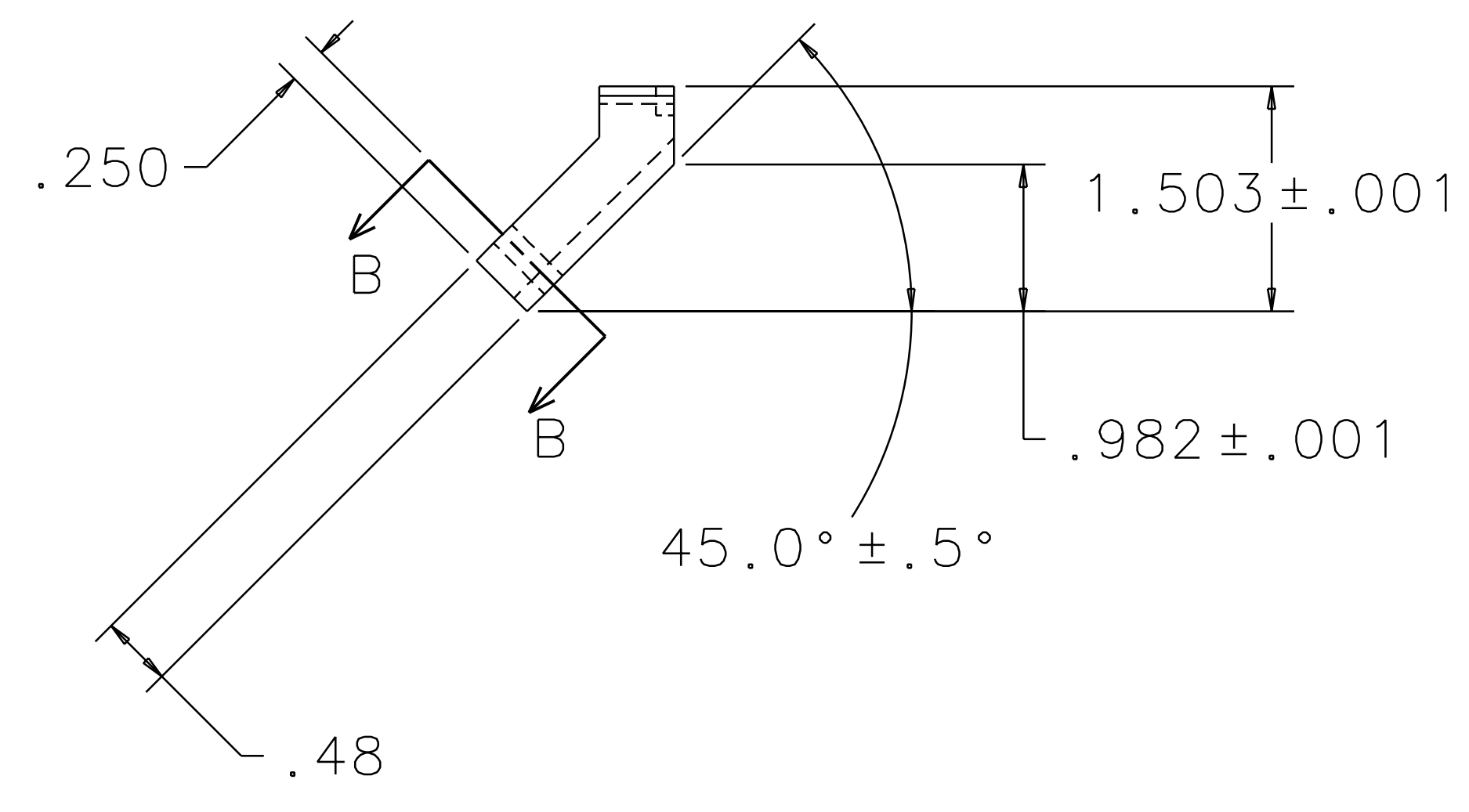
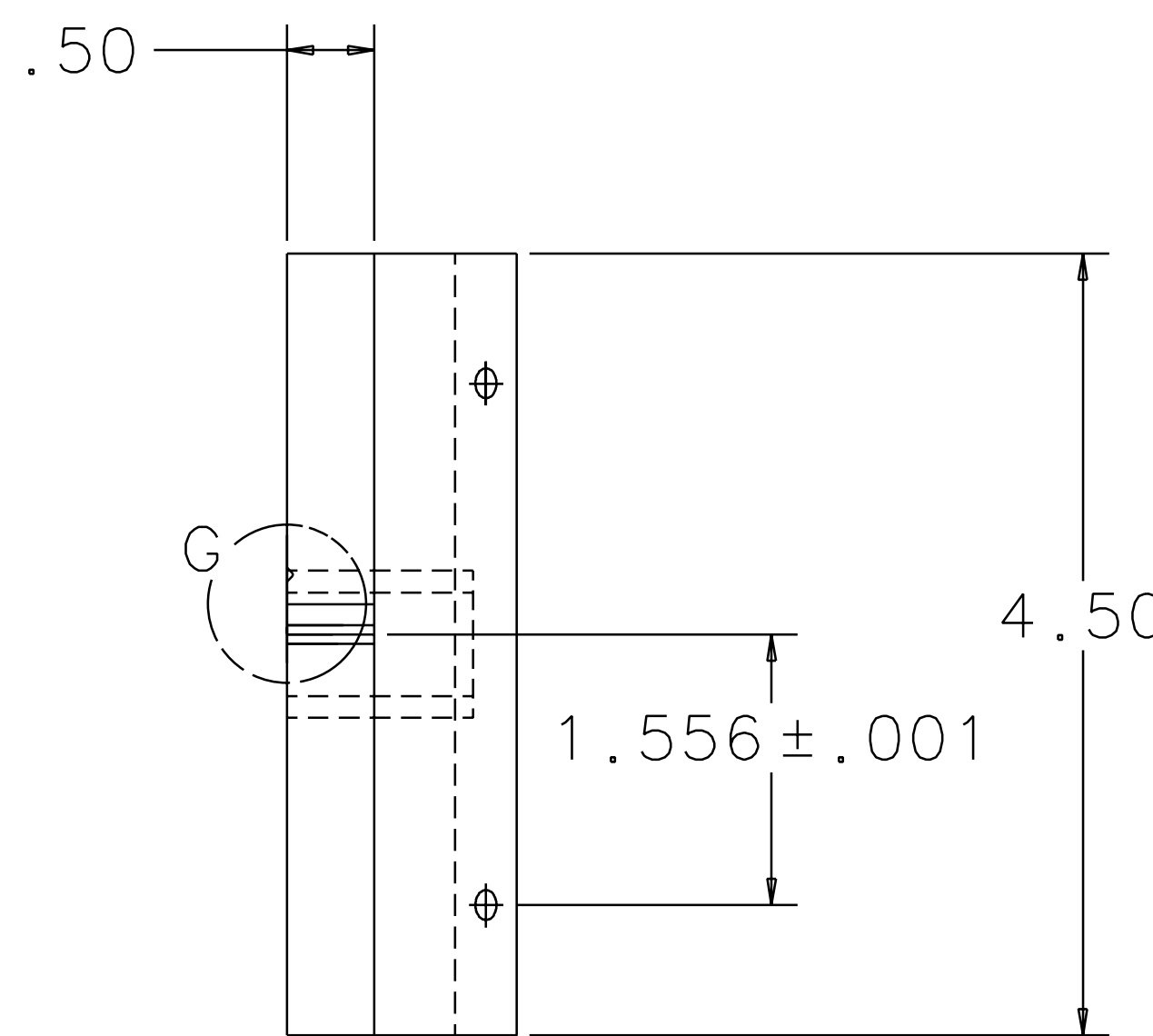
VIEW K
SCALE 2:1



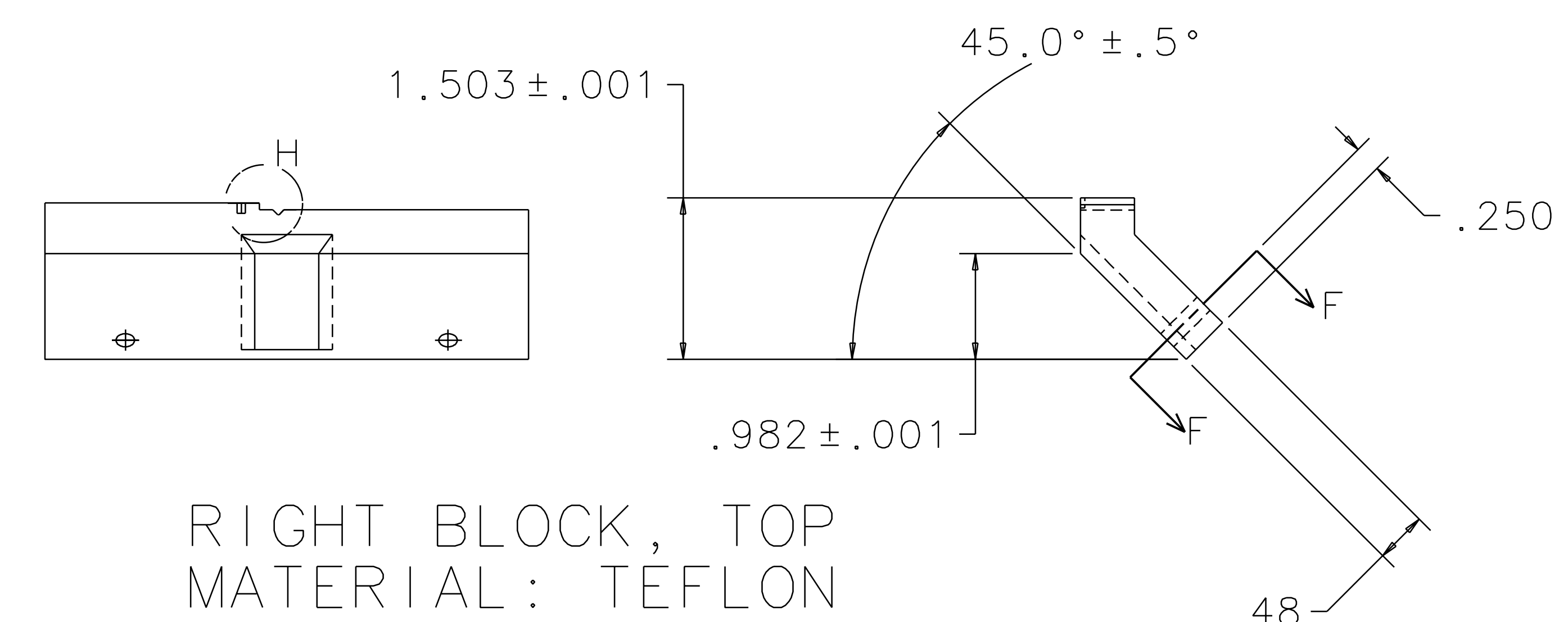
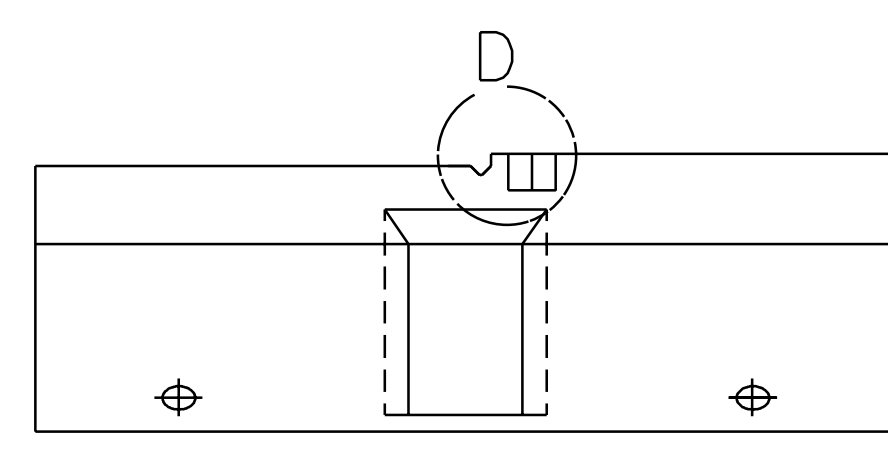
SECTION B-B



SECTION F-F



LEFT BLOCK, TOP
MATERIAL: TEFLON



RIGHT BLOCK, TOP
MATERIAL: TEFLON

QTY REQD	PART OR IDENTIFYING NO	NOMENCLATURE OR DESCRIPTION	MATERIAL SPECIFICATION	ITEM NO.
		LIGO CALIFORNIA INSTITUTE OF TECHNOLOGY MASSACHUSETTS INSTITUTE OF TECHNOLOGY		
UNLESS OTHERWISE SPECIFIED DIMENSIONS ARE IN INCHES TOLERANCES ARE: FRACTIONS DECIMALS ANGLES		APPROVALS	DATE	TITLE
0. XX ± 0.01		J. Hozel	5/96	GUIDE ROD FIXTURE
0. XXX ± 0.005				
ANGLES ± 0.5°				
DO NOT SCALE DRAWING				
NEXT ASSEMBLY	MATERIAL			REV B
FILE LOCATION	FINISH			SCALE 1/1
				SHEET 3 OF 3

1 2 3 4 5 6 7 8