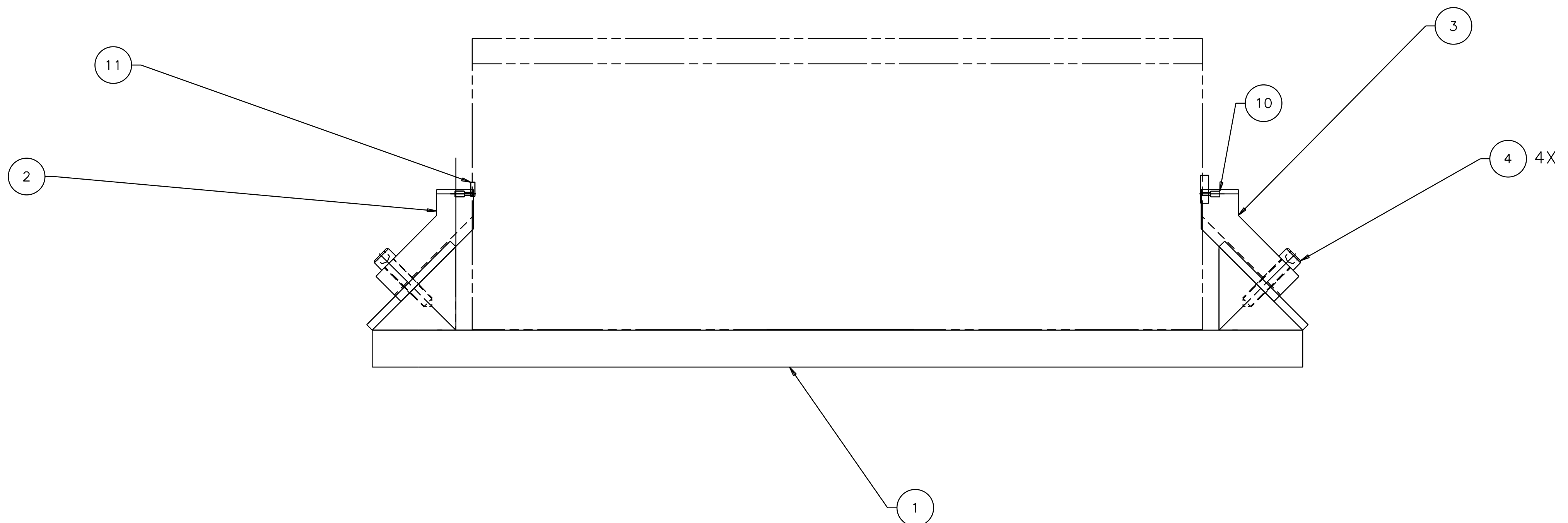
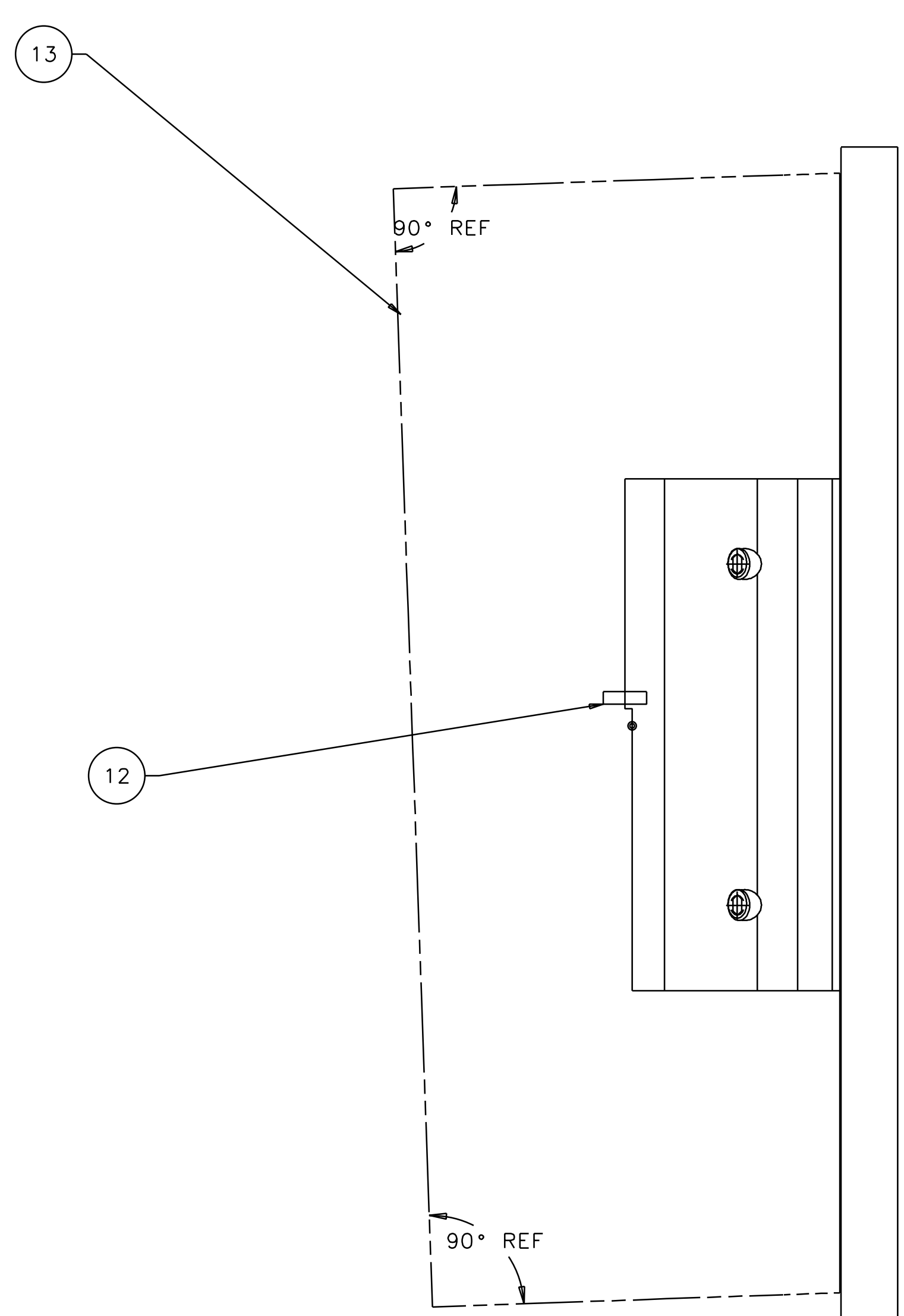
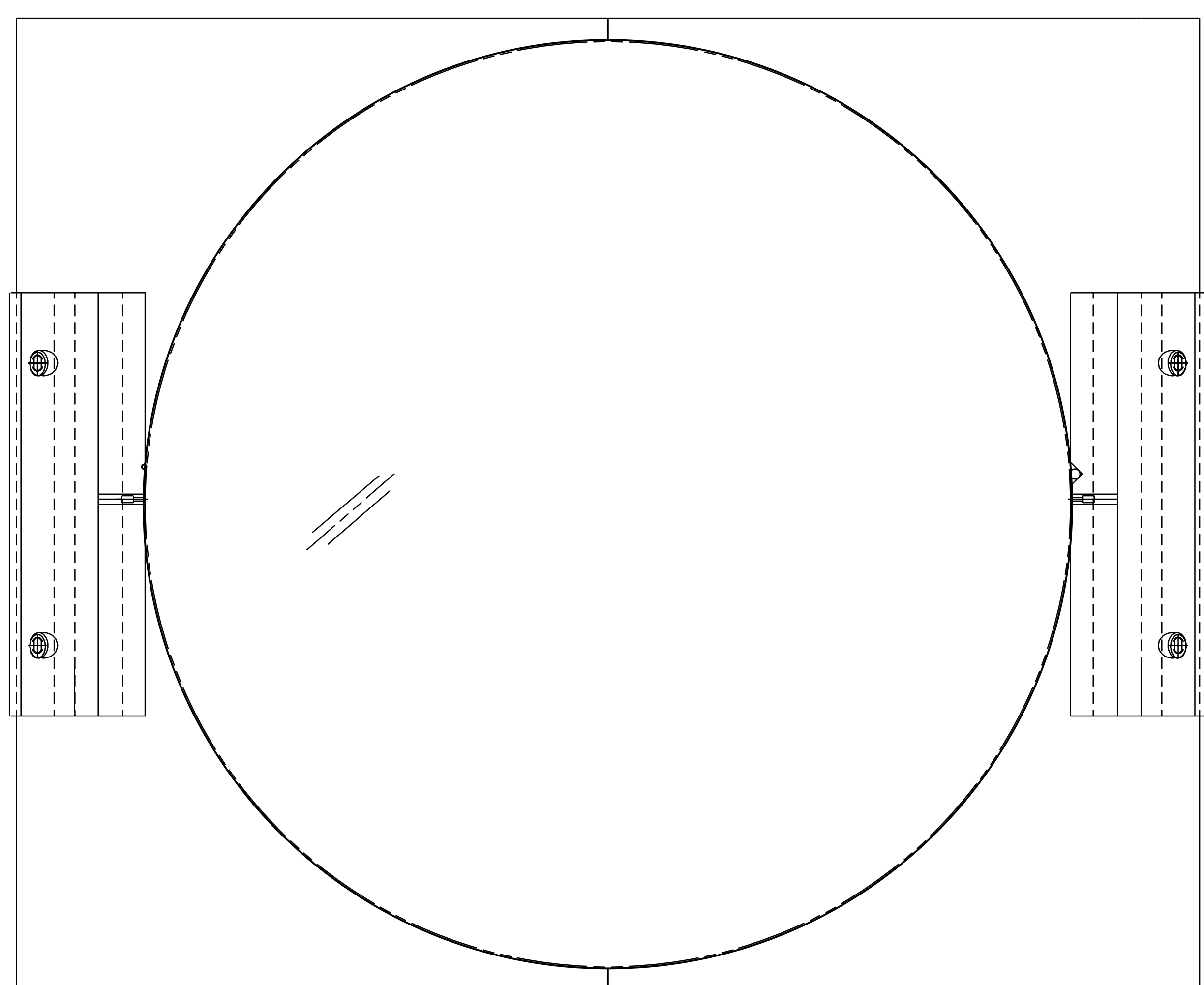


1 2 3 4 5 6 7 8

REV	DATE	DRAWN BY	CHECKED	DC	DCN/DESCRIPTION
A	2/13/98	J. Hazel			E980016/INITIAL RELEASE

- NOTES: (UNLESS OTHERWISE SPECIFIED)
- THIS FIXTURE IS TO BE USED WITH AN OPTIC THAT IS $\phi 9.84"$ X $3.94"$ THICK ($\phi 25\text{cm}$ x 10cm THICK) WITH A 2 DEGREE, THICK-SIDE-UP ORIENTED WEDGE.
 - CLOSE SLIP FIT.
 - THE RIGHT BLOCK, TOP IS USED TO MOUNT THE WIRE STANDOFF AND THE LEFT BLOCK, TOP IS USED TO MOUNT THE GUIDE ROD.
 - USE OF THIS FIXTURE IS COVERED IN LIGO-E970154.
 - COAT THESE V-GROOVES AND DOVE TAIL GROOVE WITH A $.0005/-.0008"$ THICK COATING OF DUPONT TEFLON. DIMENSIONS ARE FOR THE AS-COATED PART.

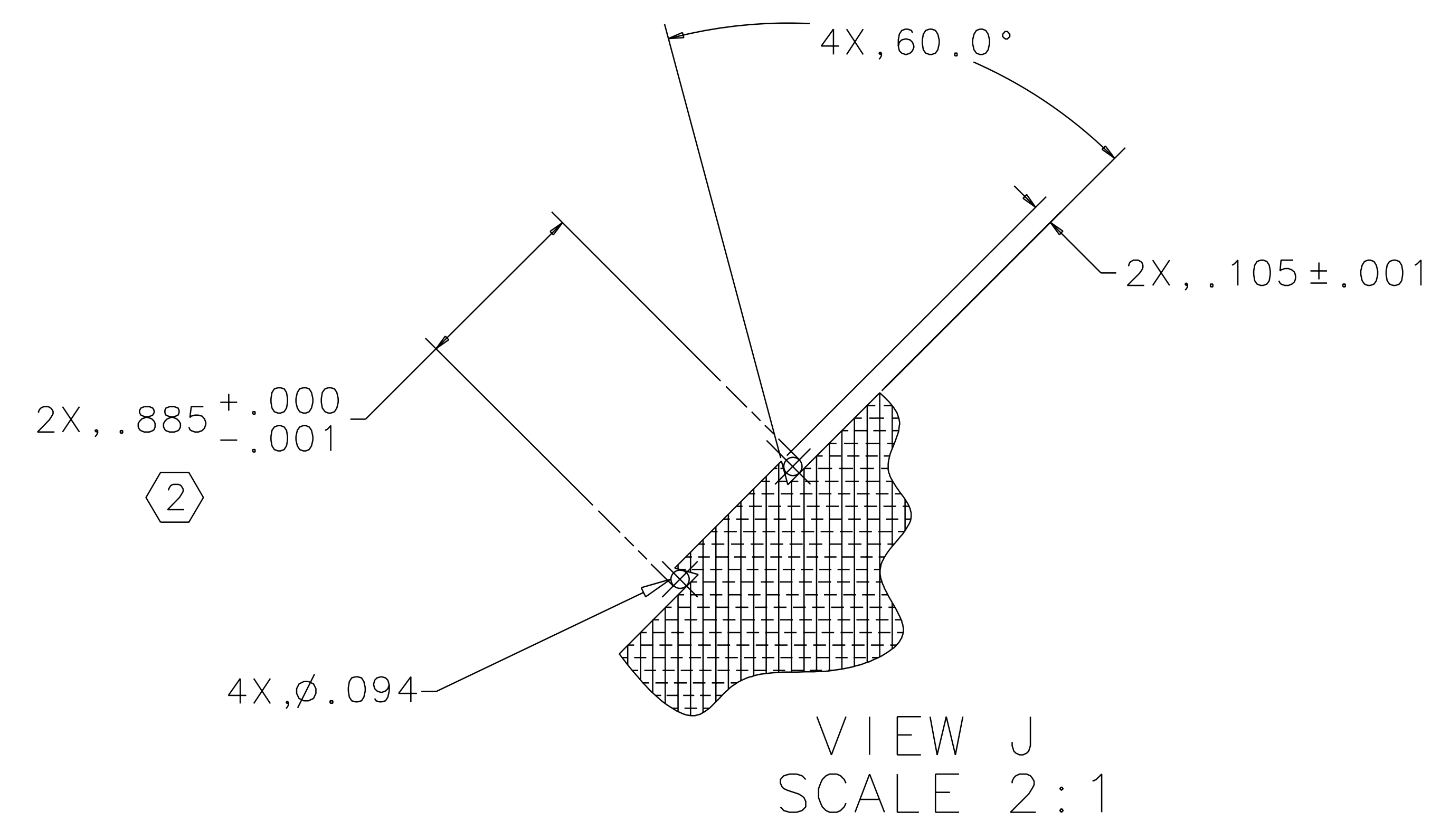
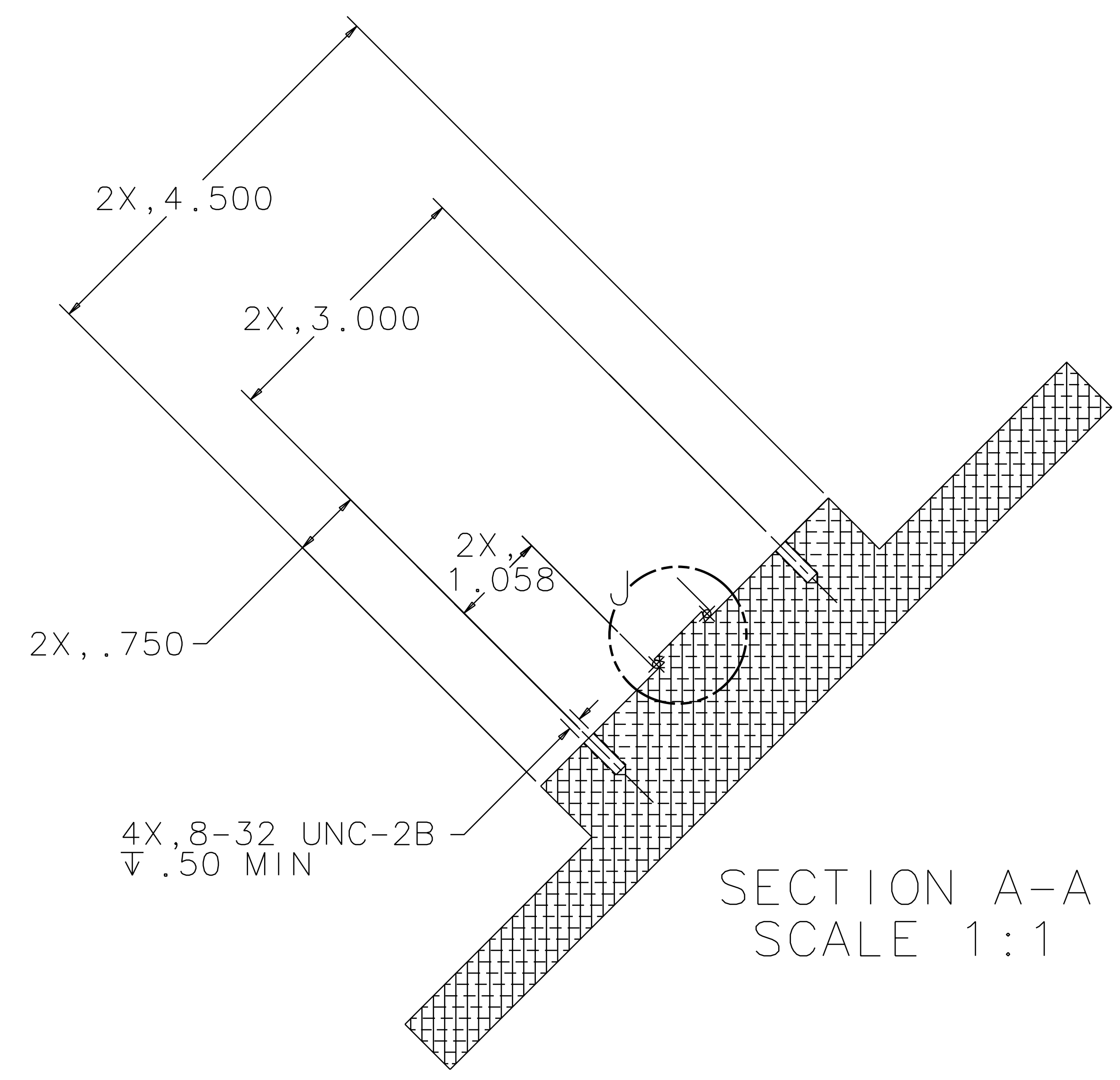
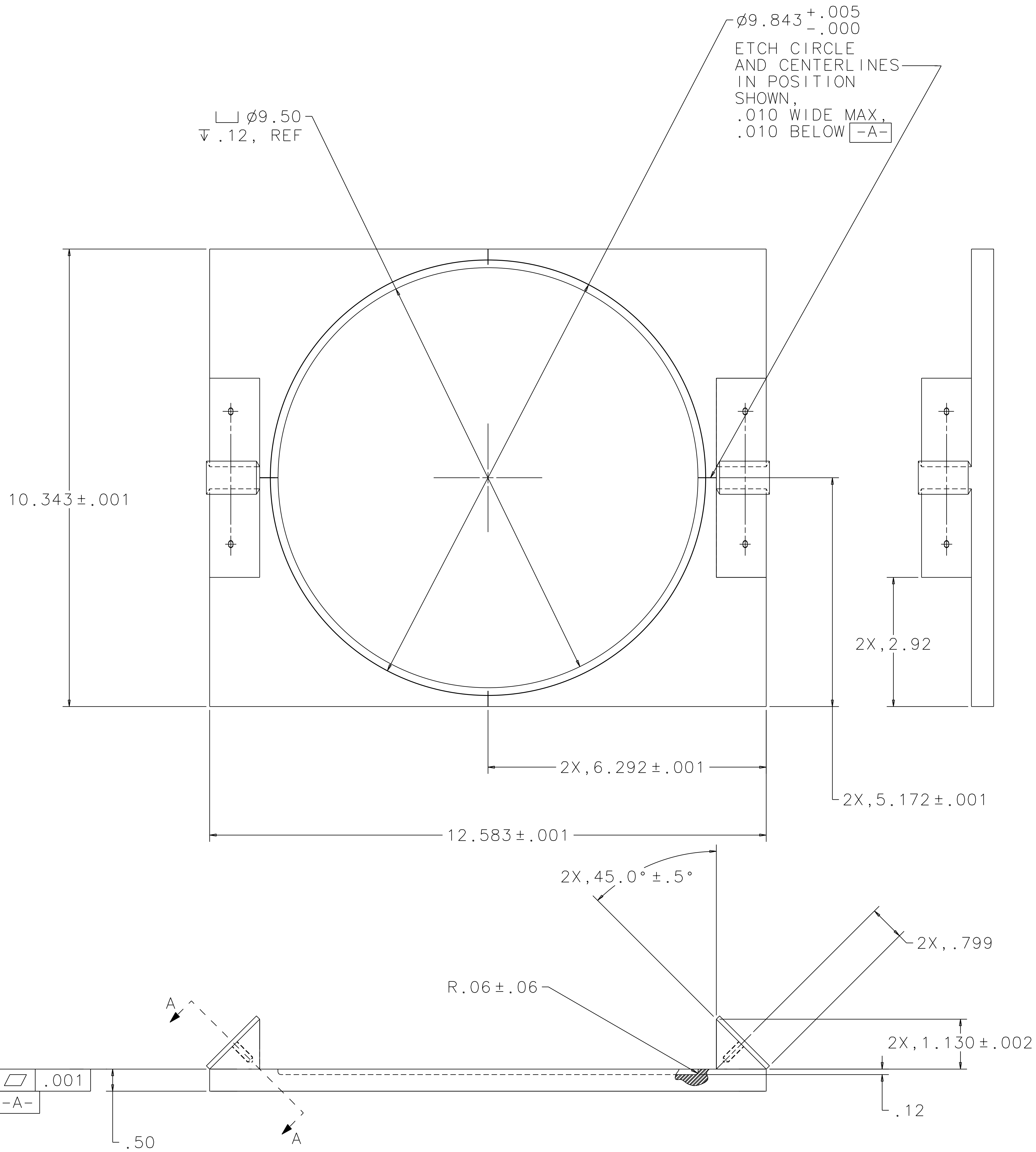


REF	QTY REQ	PART OR IDENTIFYING NO	NOMENCLATURE OR DESCRIPTION	MATERIAL SPECIFICATION	ITEM NO
			OPTIC		13
			WIRE STANDOFF		12
			GUIDE ROD		11
			MAGNET/STANDOFF ASSEMBLY		10
					9
					8
					7
					6
					5
4			SCREW_SHCS, #8-32 x .75	STAINLESS STEEL	4
1			DETAIL, SHEET 3 RIGHT BLOCK, TOP		3
1			DETAIL, SHEET 3 LEFT BLOCK, TOP		2
1			DETAIL, SHEET 2 BASE PLATE		1

UNLESS OTHERWISE SPECIFIED DIMENSIONS ARE IN INCHES		APPROVALS		DATE	LIGO CALIFORNIA INSTITUTE OF TECHNOLOGY MASSACHUSETTS INSTITUTE OF TECHNOLOGY	
TOLERANCES ARE:	DECIMALS	ANGLES		5/96	TITLE	
0. XX±0.01					GUIDE ROD FIXTURE	
0. XXX±0.005					SIZE	
ANGLES±0.5°					E D960147	
DO NOT SCALE DRAWING					SCALE	1/1
NEXT ASSEMBLY	MATERIAL				REV	A
FILE LOCATION	FINISH				SHEET	1 OF 3
/home/dcc/docs/D960147.pdf						

1 2 3 4 5 6 7 8

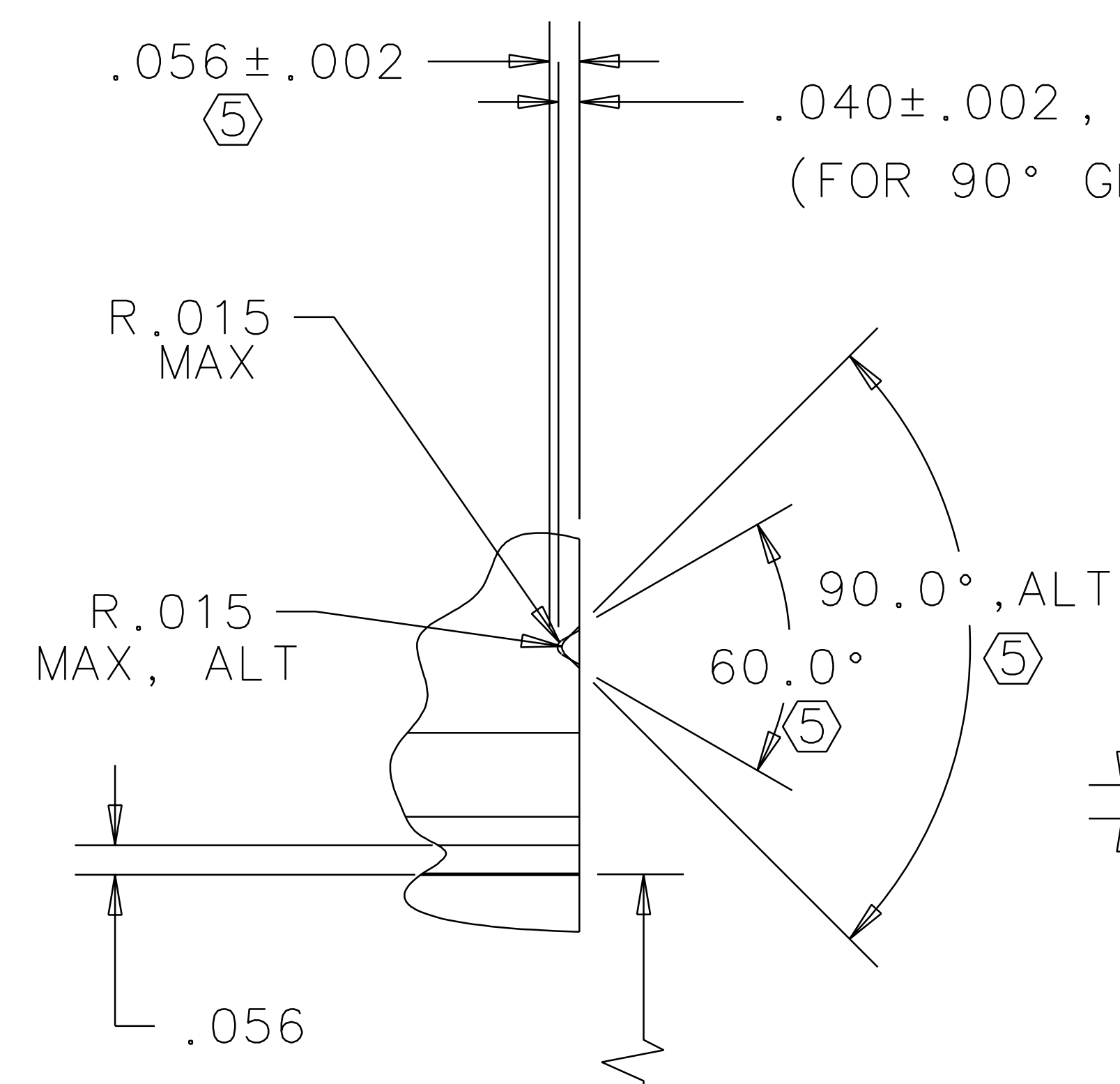
REV	DATE	DRAWN BY	CHECKED	DC	DCN/DESCRIPTION
A	2/13/98	J. Hazel			E980016/INITIAL RELEASE



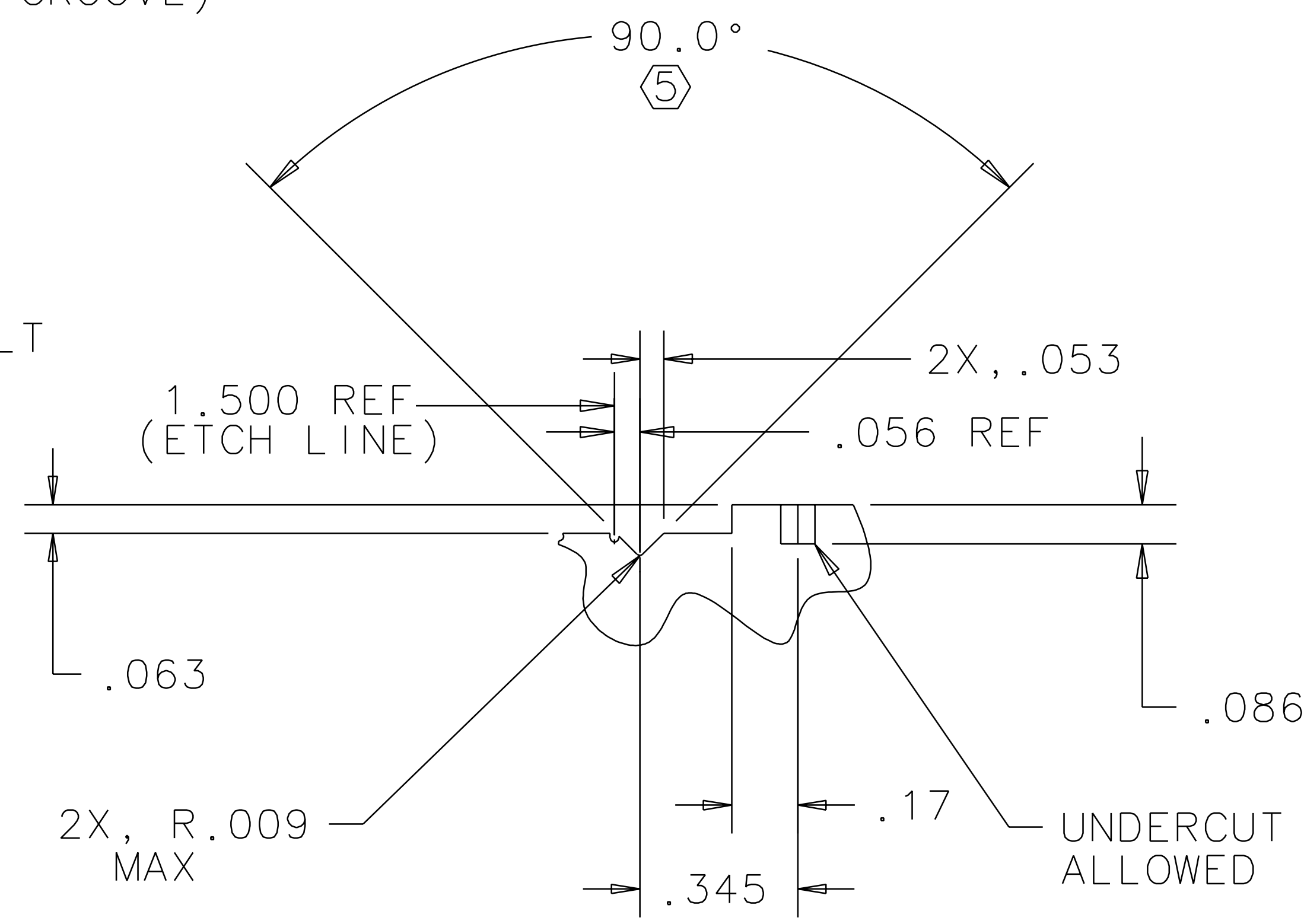
BASE PLATE
MATERIAL: 6061-T6 ALUM

QTY REQ	PART OR IDENTIFYING NO	NOMENCLATURE OR DESCRIPTION	MATERIAL SPECIFICATION	ITEM NO.
UNLESS OTHERWISE SPECIFIED DIMENSIONS ARE IN INCHES				
TOLERANCES ARE:				
FRACTIONS	DECIMALS	ANGLES		
0.XX±0.01	0.XXX±0.005	ANGLES±0.5°		
DO NOT SCALE DRAWING				
APPROVALS		DATE	LIGO CALIFORNIA INSTITUTE OF TECHNOLOGY MASSACHUSETTS INSTITUTE OF TECHNOLOGY	
DRAWN J. Hazel		5/96	TITLE GUIDE ROD FIXTURE	
CHECKED			SIZE E D960147	
NEXT ASSEMBLY		MATERIAL	SCALE 1/1	
FILE LOCATION /home/dcc/docs/D960147.pdf		FINISH	SHEET 2 OF 3	

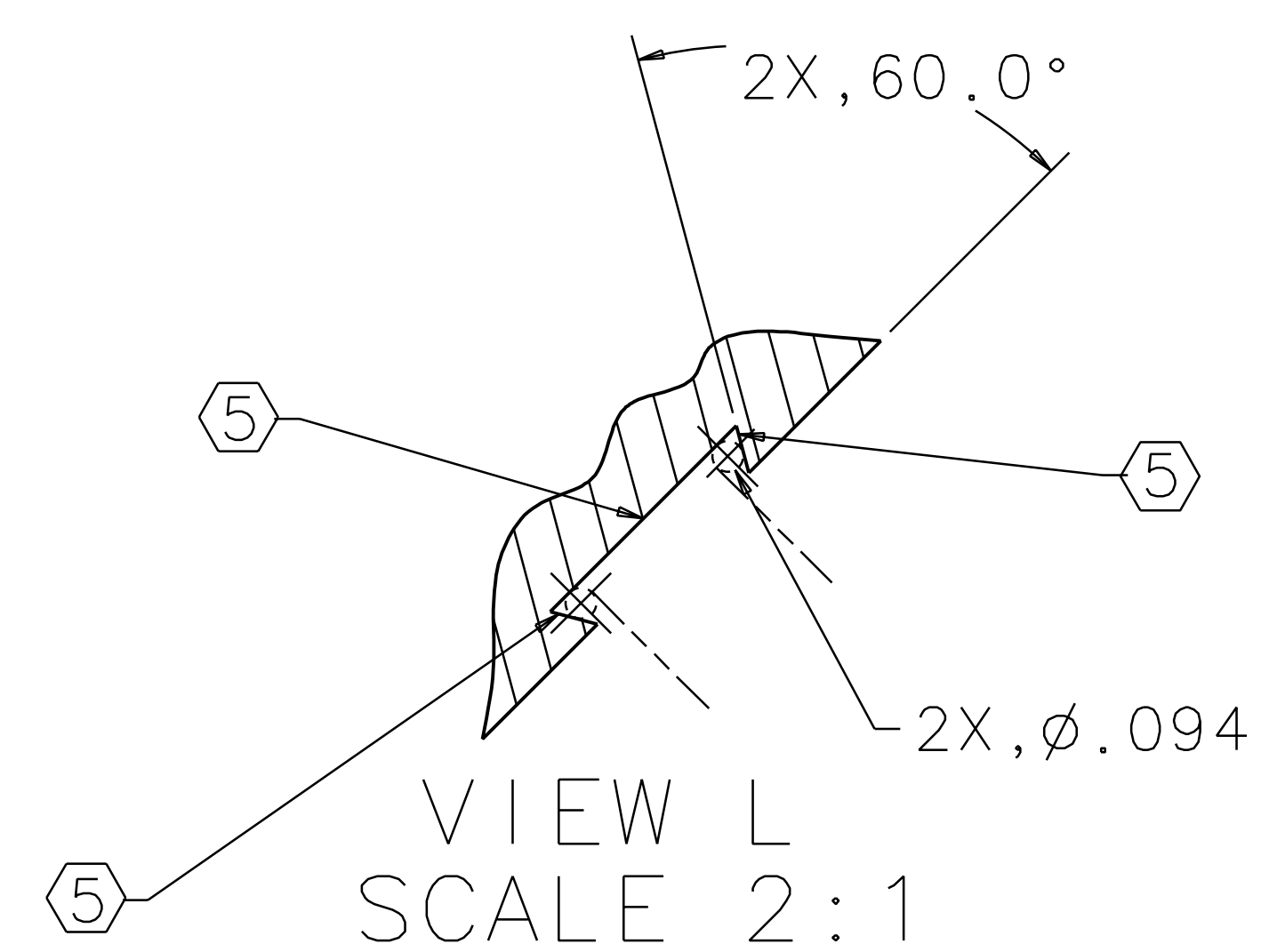
REV	DATE	DRAWN BY	CHECKED	DOC	DCN/DESCRIPTION
A	2/13/98	J. Hazel			E980016/INITIAL RELEASE



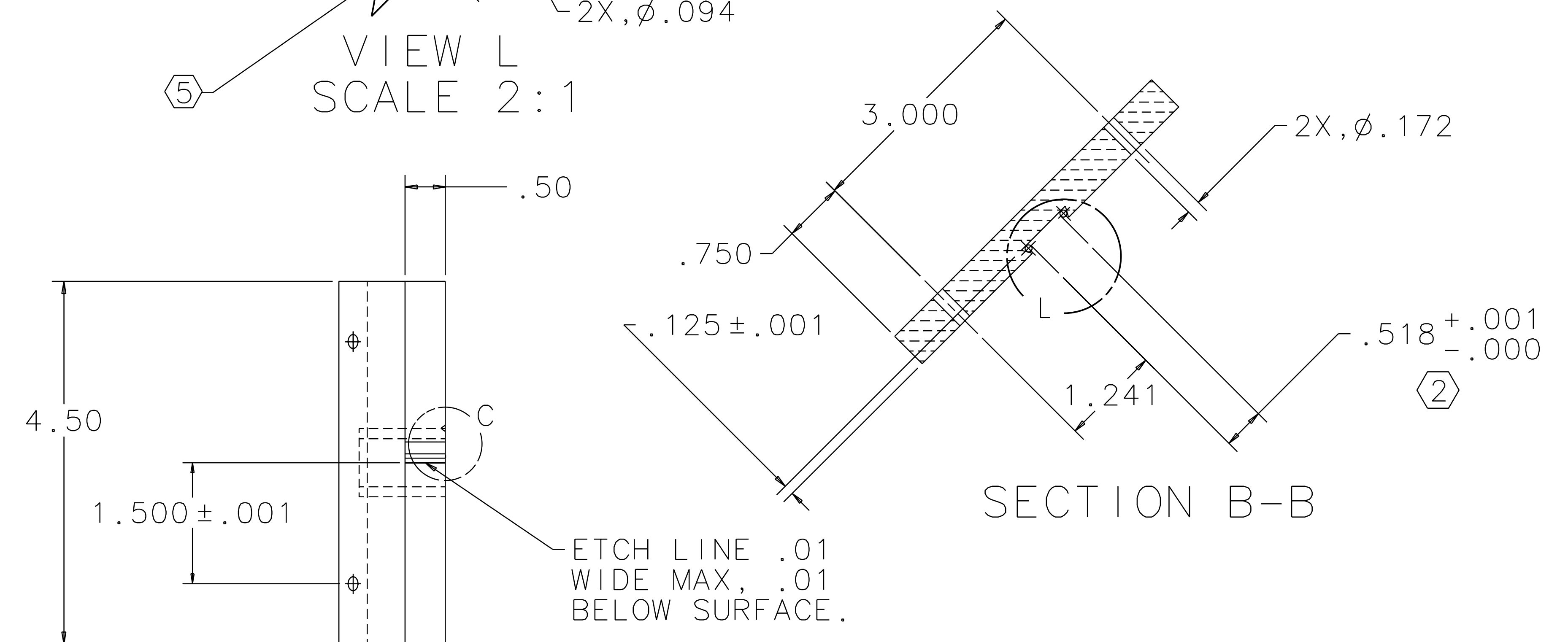
VIEW C
SCALE 4:1



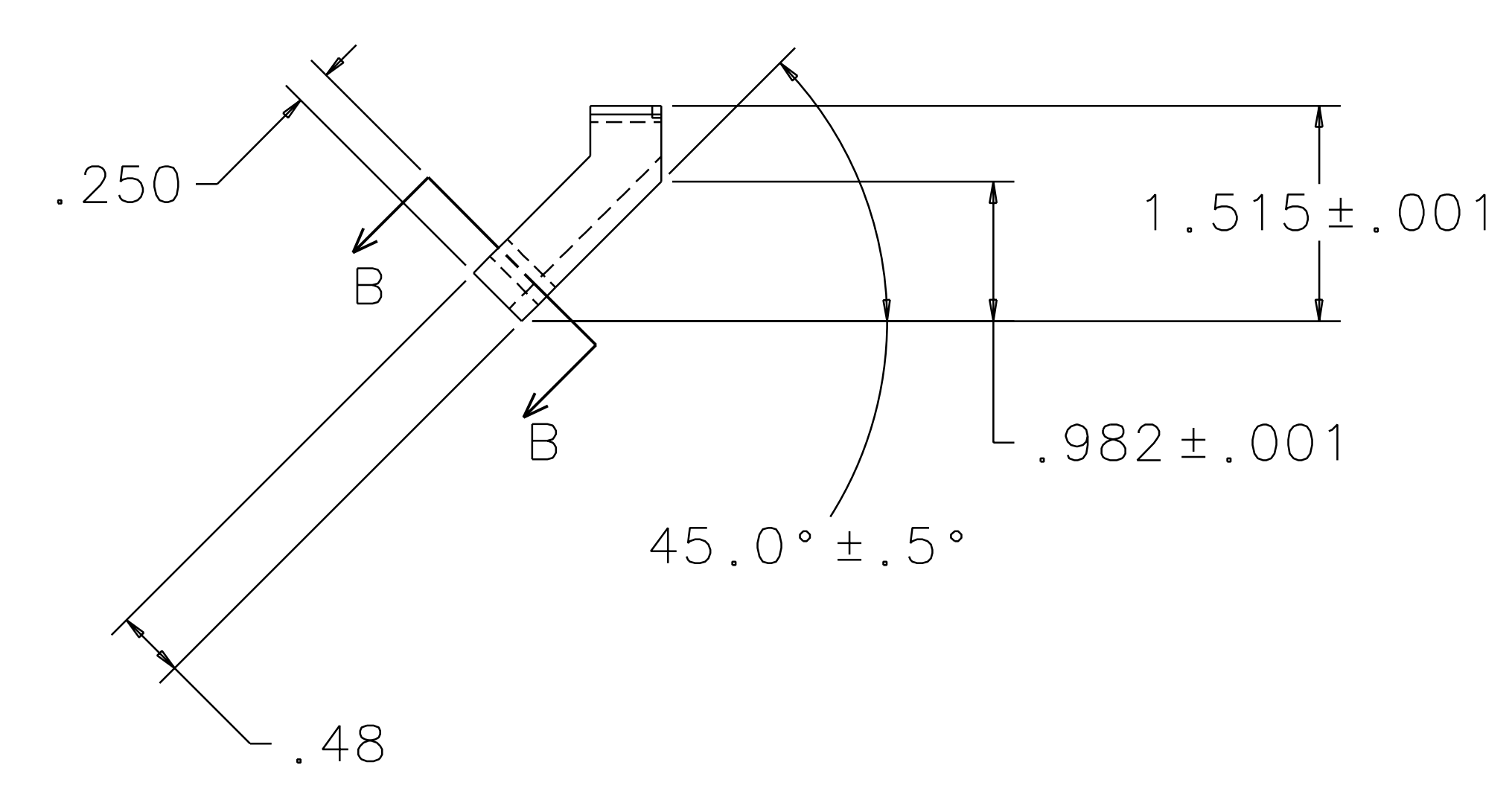
VIEW D
SCALE 4:1



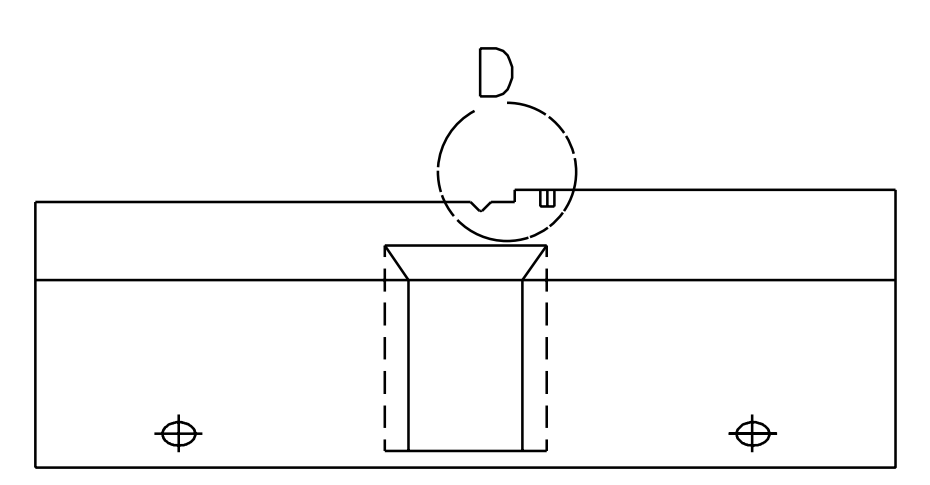
VIEW L
SCALE 2:1



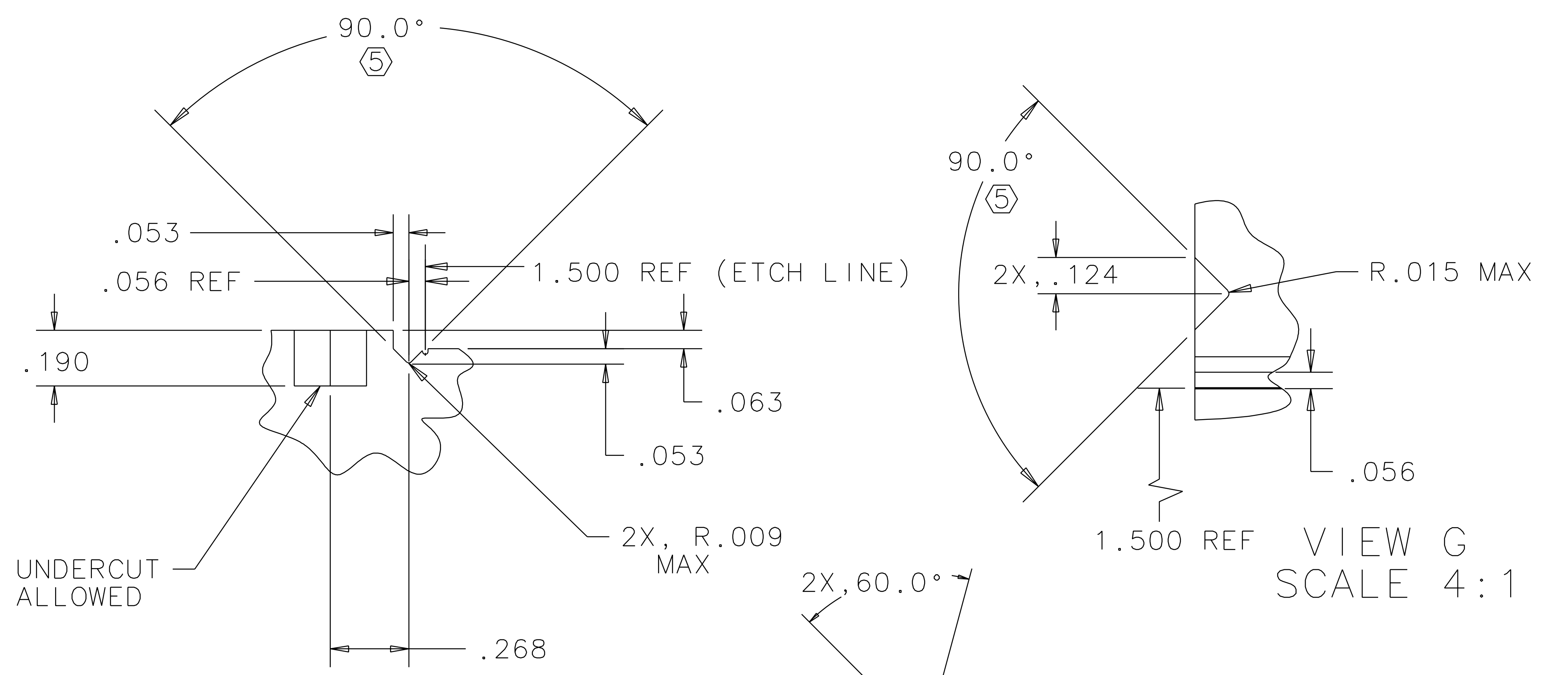
SECTION B-B



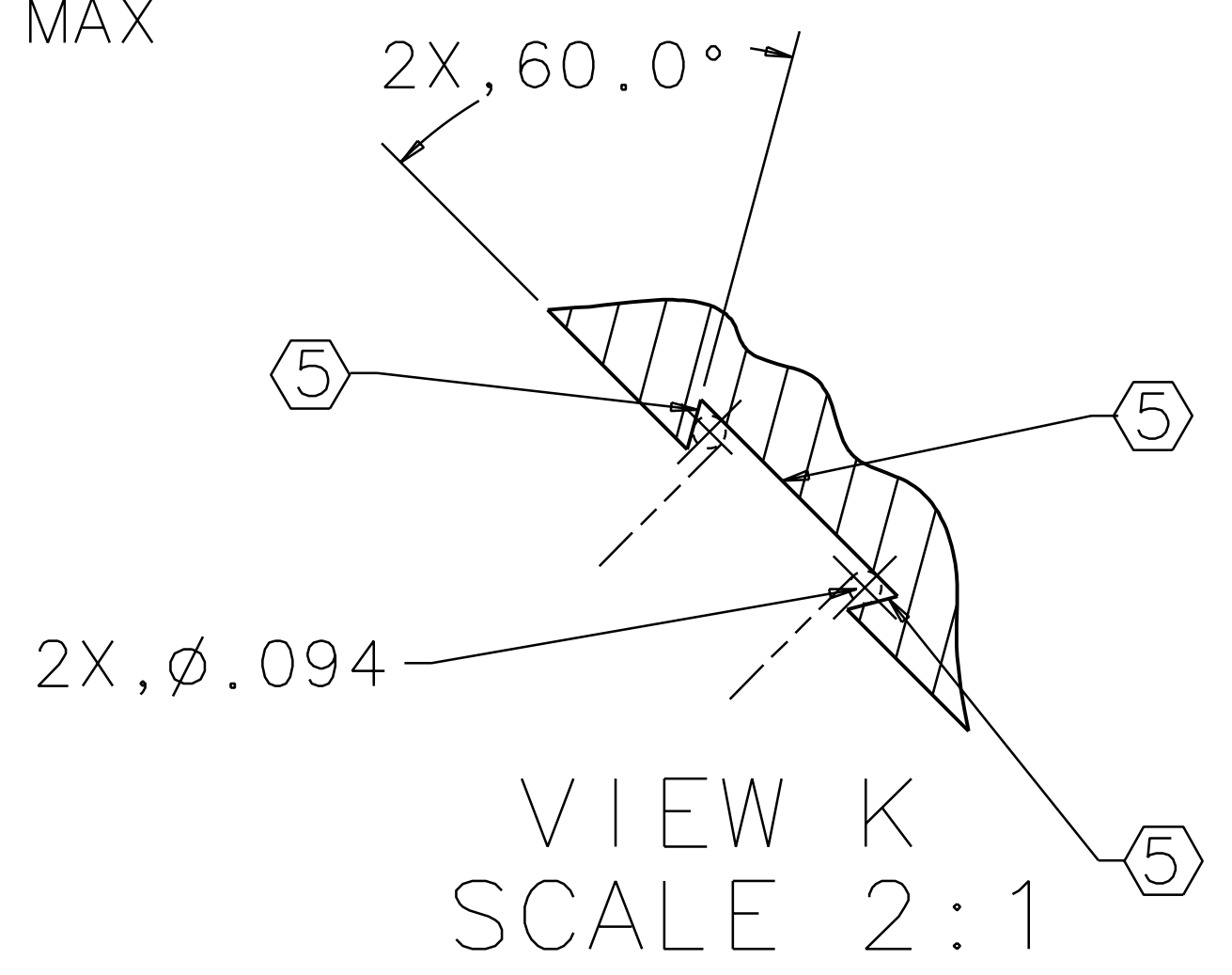
LEFT BLOCK, TOP
MATERIAL: 6061-T6



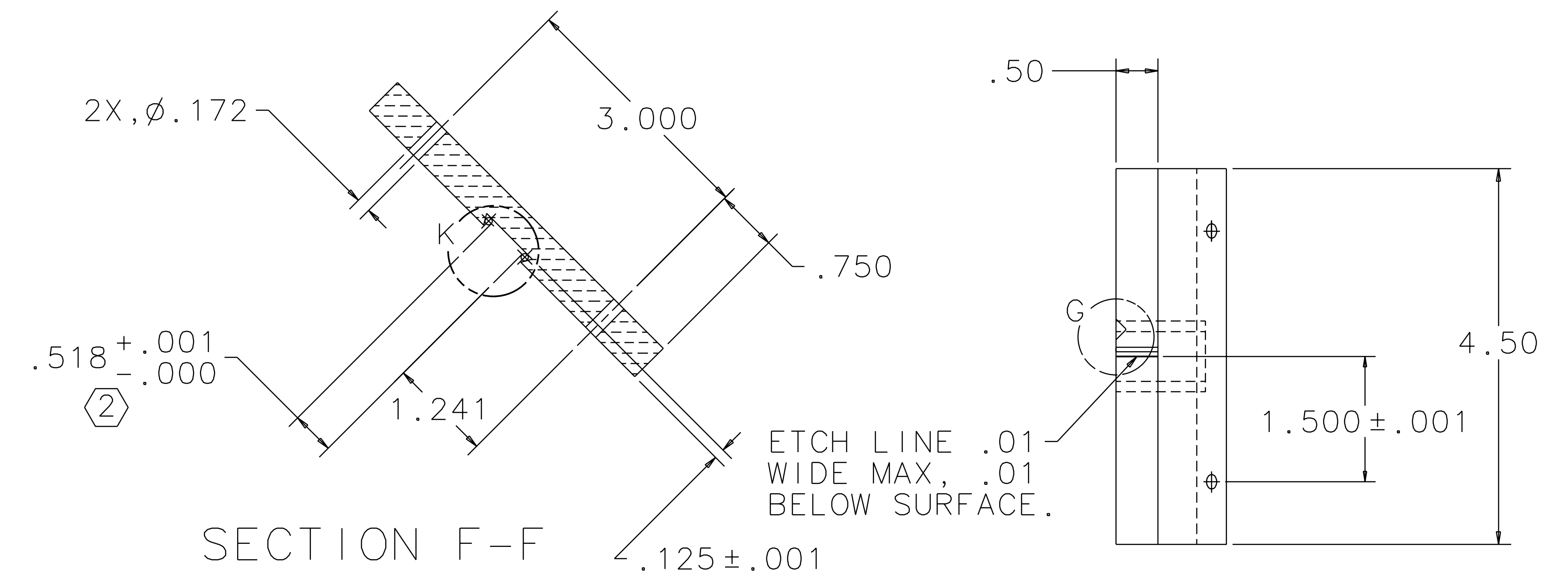
SECTION F-F



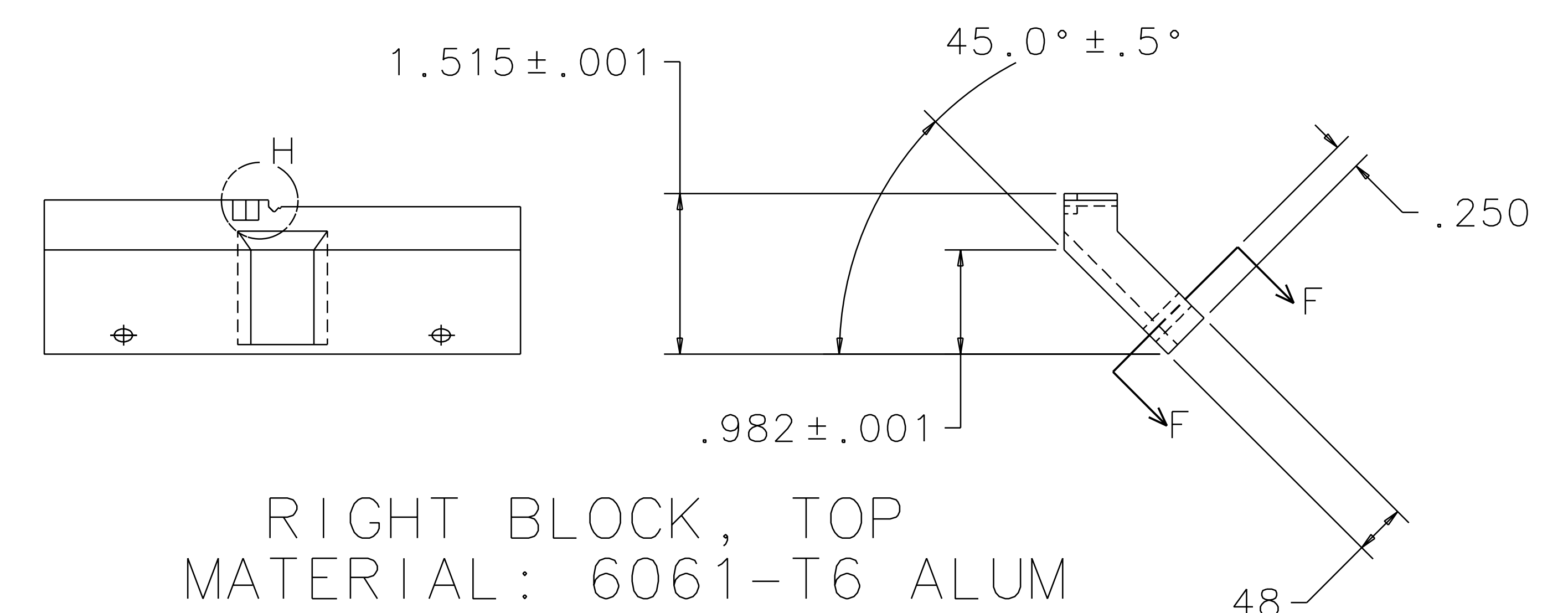
VIEW H
SCALE 4:1



VIEW K
SCALE 2:1



RIGHT BLOCK, TOP
MATERIAL: 6061-T6 ALUM



3-TOP

QTY REQD	PART OR IDENTIFYING NO	NOMENCLATURE OR DESCRIPTION	MATERIAL SPECIFICATION	ITEM NO.
		LIGO CALIFORNIA INSTITUTE OF TECHNOLOGY MASSACHUSETTS INSTITUTE OF TECHNOLOGY		
UNLESS OTHERWISE SPECIFIED DIMENSIONS ARE IN INCHES TOLERANCES ARE: FRACTIONS DECIMALS ANGLES		APPROVALS	DATE	TITLE
0.XX±0.01 0.XXX±0.005 ANGLES±0.5°		DRAWN J. Hazel	5/96	GUIDE ROD FIXTURE
DO NOT SCALE DRAWING		CHECKED		REV A
NEXT ASSEMBLY	MATERIAL	SCALE	1/1	SHEET 3 OF 3
FILE LOCATION /home/dcc/docs/D960147.pdf	FINISH			